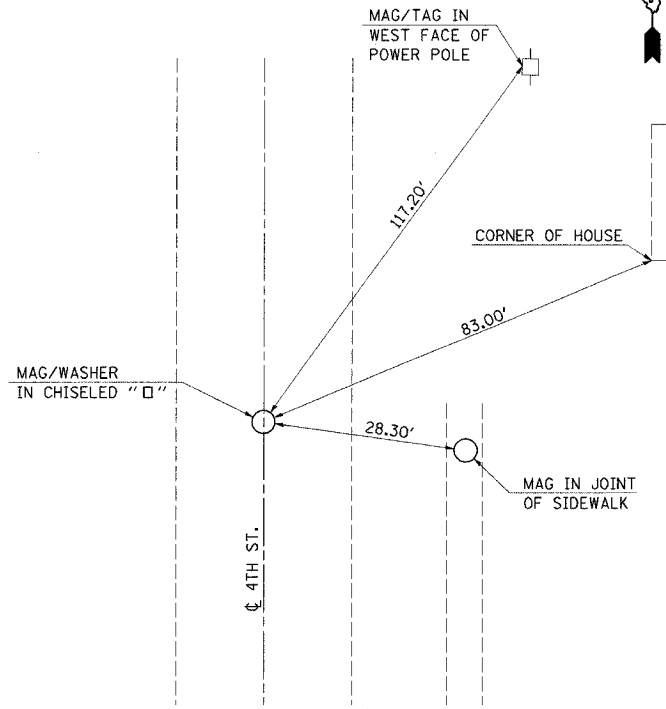


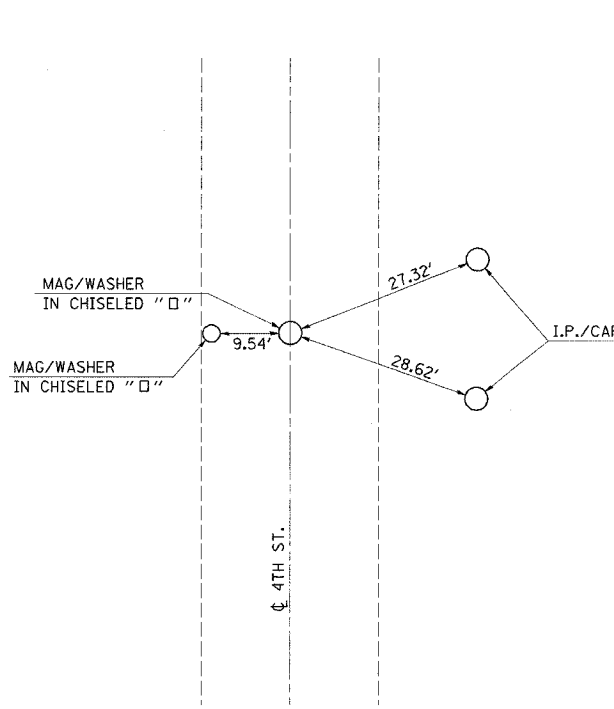
F.A.I. RTE.	SECTION	COUNTY	TOTAL SHEETS	SHEET NO.
•	(25-4 HB-DB	EFFINGHAM	67	12
STA.		TO STA.		
FED. ROAD DIST. NO.		ILLINOIS FED. AID PROJECT		

• FAI RTE. 57/70

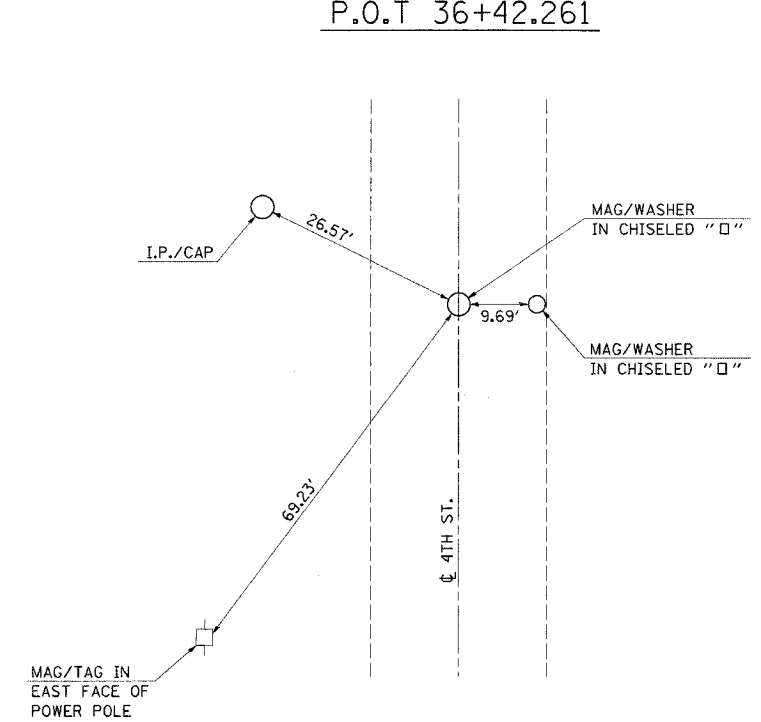
4TH ST. CENTERLINE TIES
P.O.T. 61+58.564



4TH ST. CENTERLINE TIES
P.I. KINK 44+15.499



4TH ST. CENTERLINE TIES
P.O.T 36+42.261



BENCHMARKS

- BM #21 - ELEV. = 600.99
CHISELED SQUARE ON SIGN "N. CHICAGO, E INDIANAPOLIS" BASE
STA. 2248+93/0.4' RT.
- BM #22 - ELEV. = 603.83
CHISELED SQUARE ON CRASH WALL UNDER
4TH STREET ON NORTH SIDE OF I 57/70
STA. 2270+67/67.0' LT.

REVISIONS	
NAME	DATE

ILLINOIS DEPARTMENT OF TRANSPORTATION

TIE POINTS
AND
BENCHMARKS

SCALE: VERT.
HORIZ.
DATE

DRAWN BY
CHECKED BY

PLOT DATE = 8/24/2006
PLOT SCALE = 1"=40'
PLOT SCALE = 1"=40'
USER NAME = district