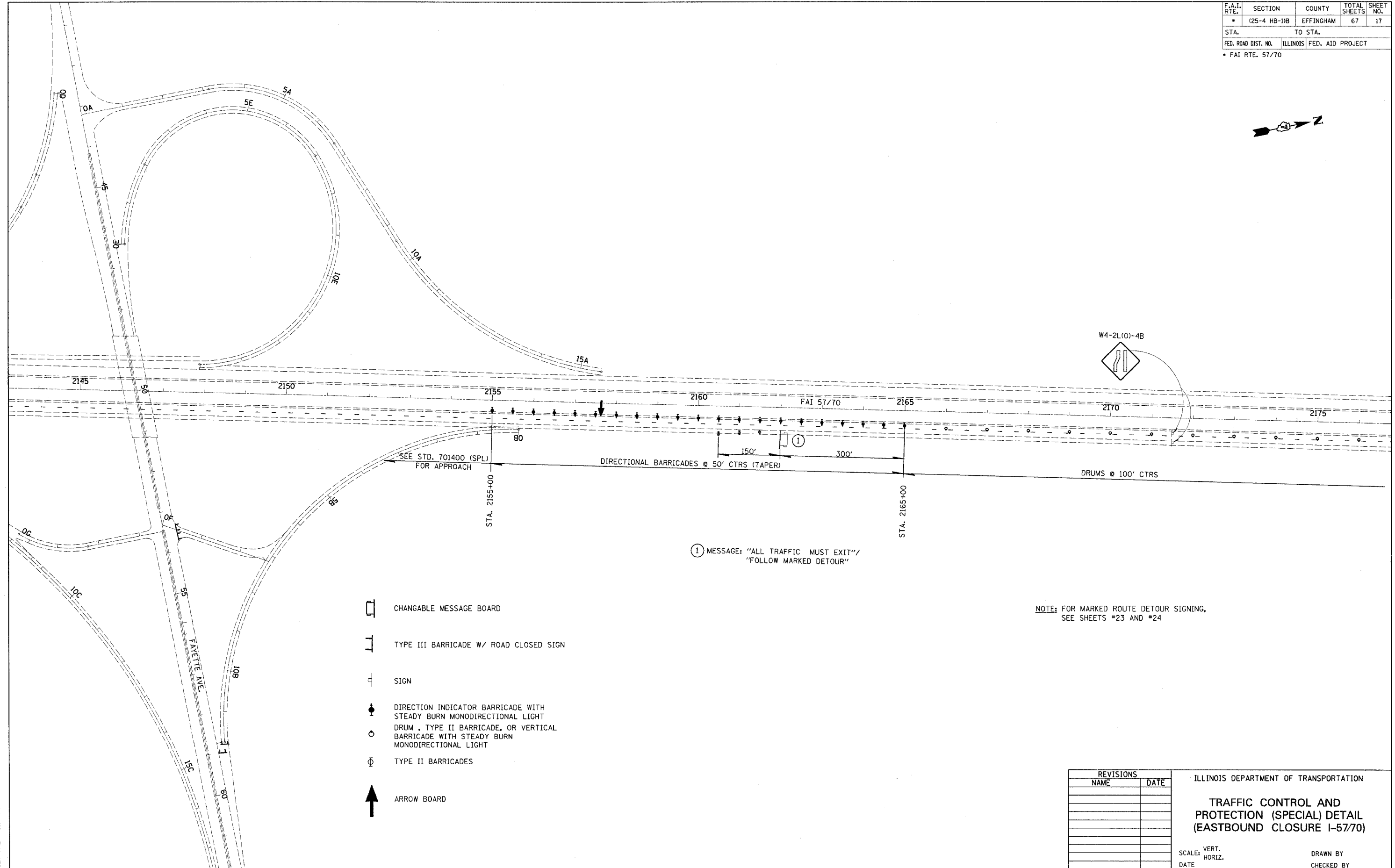


F.A.I. RTE.	SECTION	COUNTY	TOTAL SHEETS	SHEET NO.
*	(25-4 HB-1)B	EFFINGHAM	67	17
STA.		TO STA.		
FED. ROAD DIST. NO.	ILLINOIS	FED. AID PROJECT		
* FAI RTE. 57/70				










W4-2L(0)-4B



① MESSAGE: "ALL TRAFFIC MUST EXIT"  
"FOLLOW MARKED DETOUR"

NOTE: FOR MARKED ROUTE DETOUR SIGNING,  
SEE SHEETS #23 AND #24

-  CHANGABLE MESSAGE BOARD
-  TYPE III BARRICADE W/ ROAD CLOSED SIGN
-  SIGN
-  DIRECTION INDICATOR BARRICADE WITH STEADY BURN MONODIRECTIONAL LIGHT
-  DRUM, TYPE II BARRICADE, OR VERTICAL BARRICADE WITH STEADY BURN MONODIRECTIONAL LIGHT
-  TYPE II BARRICADES
-  ARROW BOARD

REVISIONS	
NAME	DATE

ILLINOIS DEPARTMENT OF TRANSPORTATION  
**TRAFFIC CONTROL AND PROTECTION (SPECIAL) DETAIL (EASTBOUND CLOSURE I-57/70)**

SCALE: VERT. \_\_\_\_\_  
HORIZ. \_\_\_\_\_  
DATE \_\_\_\_\_ DRAWN BY \_\_\_\_\_  
CHECKED BY \_\_\_\_\_

PLOT DATE = 8/24/2005  
FILE NAME = #FILE#  
PLOT SCALE = #SCALE#  
USER NAME = #DISTRICT#