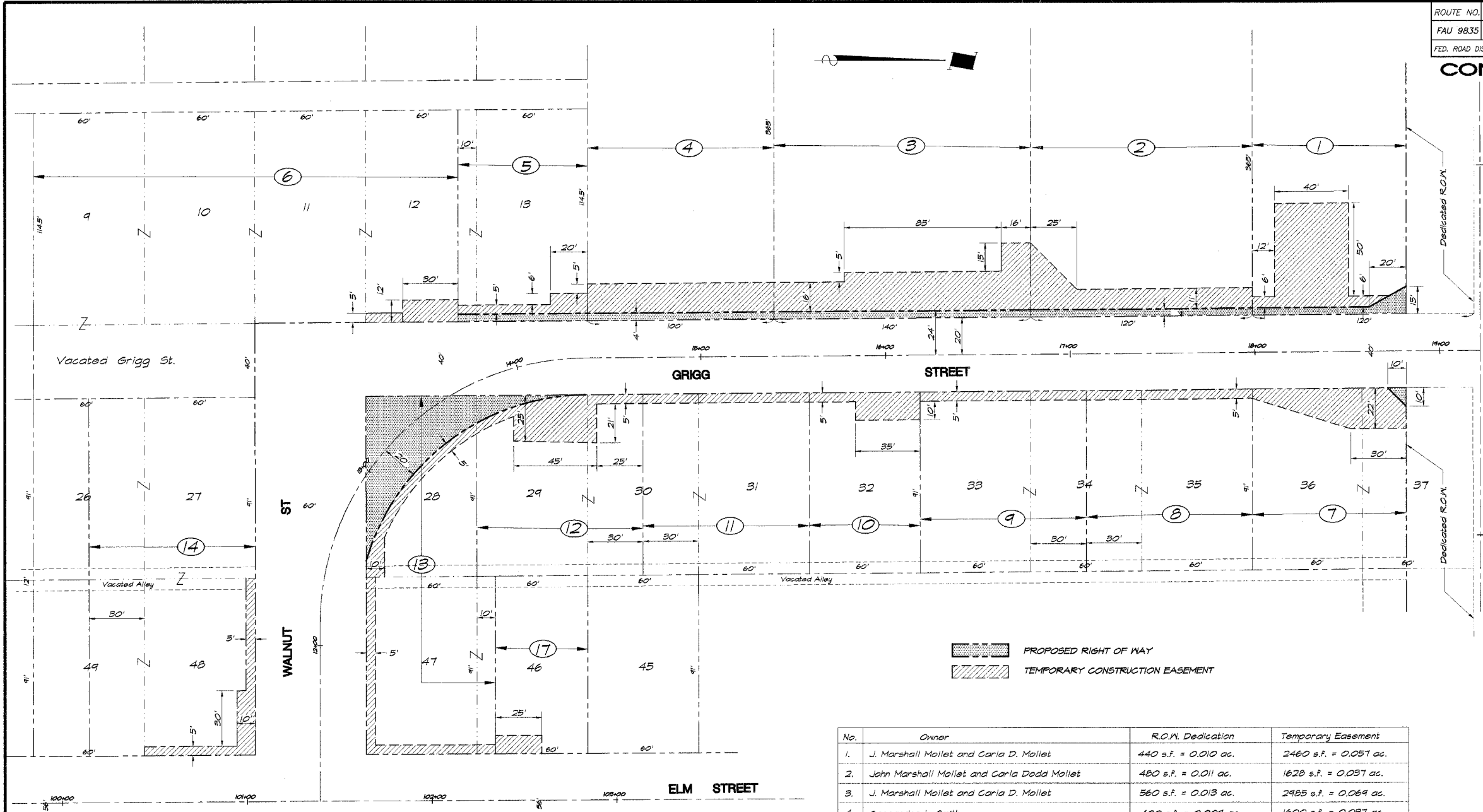


ROUTE NO.	SECTION	CITY	TOTAL SHEETS	SHEET NO.
FAU 9835	02-00037-00-PV	GREENVILLE	25	16
FED. ROAD DIST. NO.		ILLINOIS	PROJECT M-507B (6)	

CONTRACT No 972 82



PROPOSED RIGHT OF WAY
 TEMPORARY CONSTRUCTION EASEMENT

No.	Owner	R.O.W. Dedication	Temporary Easement
1.	J. Marshall Mollet and Carla D. Mollet	440 s.f. = 0.010 ac.	2460 s.f. = 0.057 ac.
2.	John Marshall Mollet and Carla Dadd Mollet	480 s.f. = 0.011 ac.	1620 s.f. = 0.037 ac.
3.	J. Marshall Mollet and Carla D. Mollet	560 s.f. = 0.013 ac.	2985 s.f. = 0.069 ac.
4.	Cassandra L. Smith	400 s.f. = 0.009 ac.	1600 s.f. = 0.037 ac.
5.	Nicholas A. Weatherly	280 s.f. = 0.006 ac.	470 s.f. = 0.011 ac.
6.	George F. Massie and Margaret I. Massie	—	460 s.f. = 0.011 ac.
7.	Edward A. Utiaut Health Services, Inc., a corp.	50 s.f. = 0.001 ac.	1324 s.f. = 0.030 ac.
8.	Donald L. Smith	—	450 s.f. = 0.010 ac.
9.	James T. Neer	—	450 s.f. = 0.010 ac.
10.	William D. Spratt and Becky S. Spratt	—	650 s.f. = 0.015 ac.
11.	Mark A. Gan and Kimberly J. Gan	—	450 s.f. = 0.010 ac.
12.	Mark A. Gan and Kimberly J. Gan	286 s.f. = 0.006 ac.	1296 s.f. = 0.030 ac.
13.	Karl S. Somerville and Deborah Somerville	2508 s.f. = 0.058 ac.	1396 s.f. = 0.032 ac.
14.	S. Bradley Shaw and Georgann K. Shaw	—	906 s.f. = 0.021 ac.
15.	Craig Rathbone and Julie Rathbone	—	300 s.f. = 0.007 ac.
16.	Harry F. Winslow and Ruth C. Winslow, Trustees	—	125 s.f. = 0.003 ac.
17.	Basil Gaumer and Lorene Gaumer	—	250 s.f. = 0.006 ac.
18.	Ruth Noble, Trustee	—	150 s.f. = 0.003 ac.
T O T A L S		5004 s.f. = 0.114 ac.	17290 s.f. = 0.397 ac.

STATE ROUTE 140
HILLVIEW RD

DESIGNED	SCALE	NO.	BY	DATE
MMP	1" = 50'			
DRAWN				
LES JENKINS				
FIELD BOOK				
XXX				

BAINBRIDGE
 G.F. MEANSKI
 & ASSOCIATES, INC.
 Consulting Engineers
 1670 SOUTH TAYLORVILLE ROAD
 DECATUR ILLINOIS
 Illinois License 184-001825

CITY OF GREENVILLE, ILLINOIS
 GRIGG STREET IMPROVEMENTS
 STRIP MAP

SEAL

SHEET NO.
 16
 OF
 25