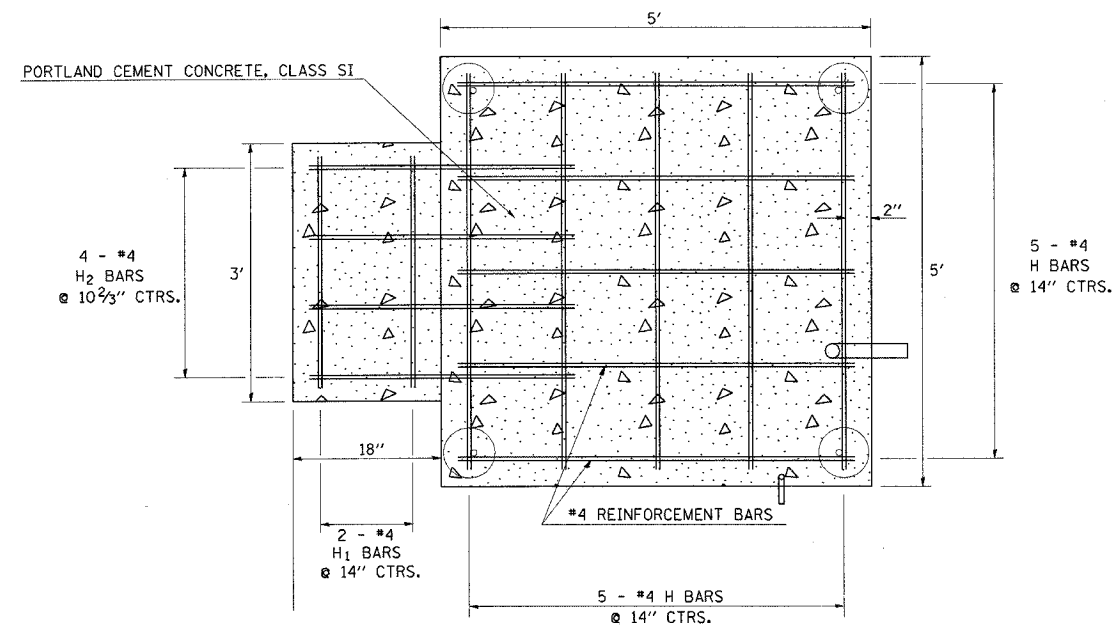
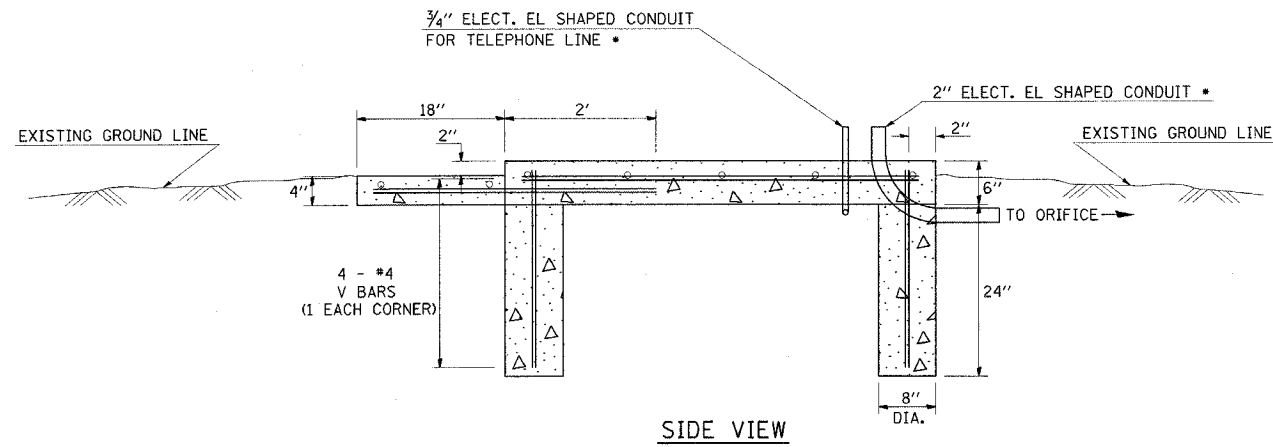


F.A.P. RTE.	SECTION	COUNTY	TOTAL SHEETS	SHEET NO.
821	13B-1	JEFFERSON	39	8
STA.		TO STA.		
FED. ROAD DIST. NO.		ILLINOIS FED. AID PROJECT		

USGS GAGING STATION CONCRETE PAD DETAIL



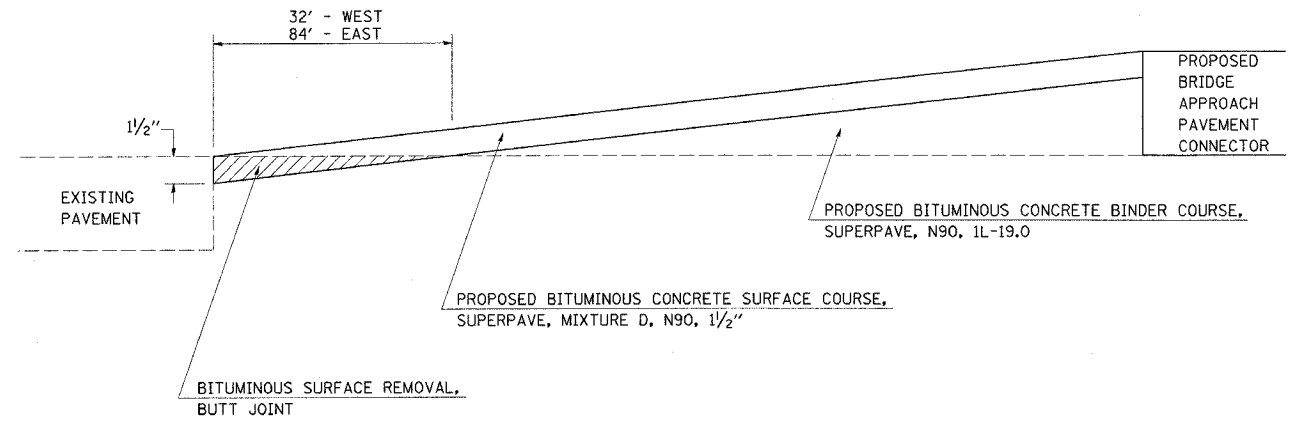
• TO BE SUPPLIED BY USGS CONTACT
FOOTINGS ARE 8" DIAMETER x 24" DEEP CONCRETE COLUMNS ON FOUR SIDES

NOTE:
HOLD REBAR 2" FROM EDGE OF CONCRETE

BILL OF MATERIALS				
BAR	NO	SIZE	LENGTH	SHAPE
H	10	#4	4' - 8"	—
H1	2	#4	2' - 8"	—
H2	4	#4	3' - 4"	—
V	4	#4	2' - 2"	—
REINFORCEMENT BARS			POUND	49.4*
PCC CONCRETE CLASS SI			CU YD	1.87*
* FOR INFORMATION ONLY-NOT A PAY ITEM				

BUTT JOINT DETAIL

STATION 1196+75 TO STATION 1197+59
STATION 1201+98 TO STATION 1202+50



PLT DATE = 8/22/2006
FILE NAME = 821E1E1
PLOT SCALE = *SCALE*
USER NAME = dstr-101

REVISIONS	
NAME	DATE

ILLINOIS DEPARTMENT OF TRANSPORTATION
**USGS PAD,
AND
BUTT JOINT
DETAILS**
SCALE: VERT. _____
 HORIZ. _____
DATE _____
DRAWN BY _____
CHECKED BY _____