

STATE OF ILLINOIS
DEPARTMENT OF TRANSPORTATION
DIVISION OF HIGHWAYS

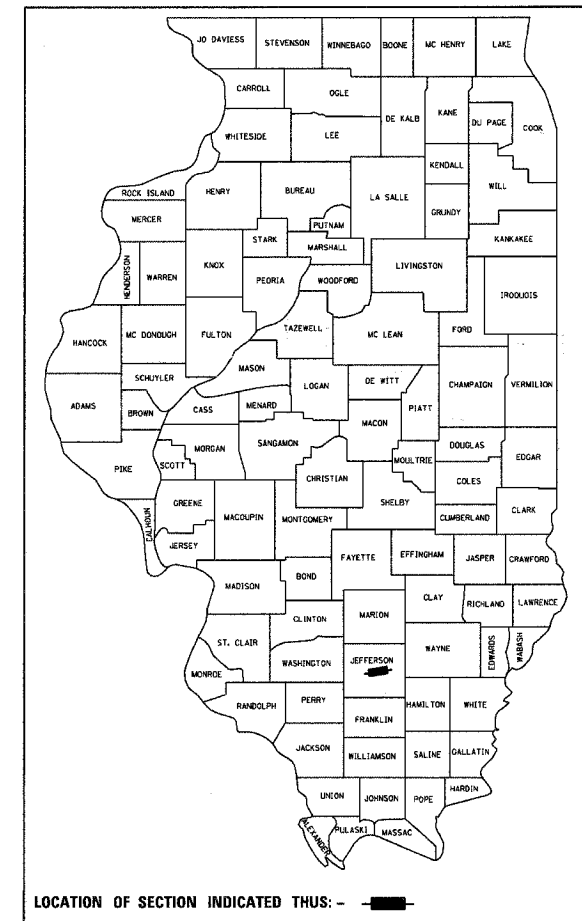
**PROPOSED
HIGHWAY PLANS**

F.A.P. ROUTE 821 (IL 15)
SECTION (15-2)BR
PROJECT : BHF-0821(039)
DECK REPLACEMENT
JEFFERSON COUNTY
C-99-023-06

F.A.P. RTE.	SECTION	COUNTY	TOTAL SHEETS	SHEET NO.
821	(15-2)BR	JEFFERSON	33	1

CONTRACT NO. 98958

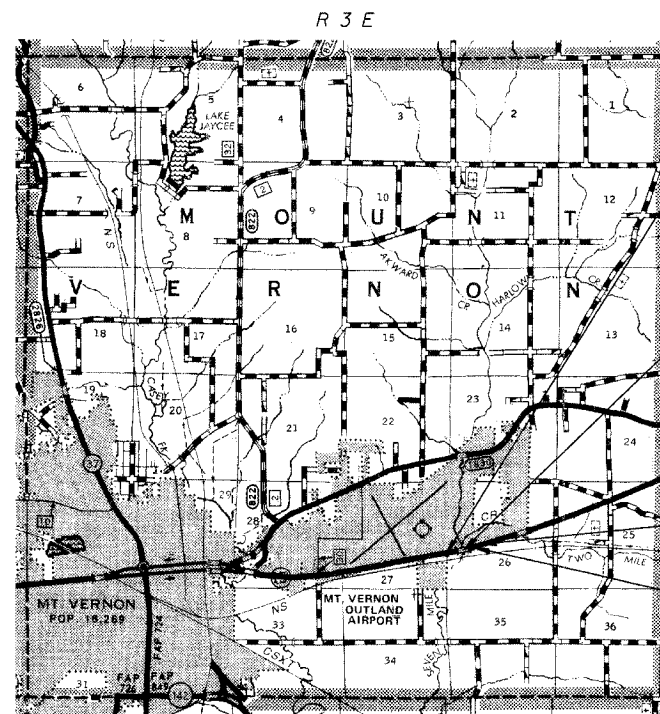
D-97-030-03



FOR INDEX OF SHEETS, SEE SHEET NO. 2
FOR LIST OF ILLINOIS D.O.T. HIGHWAY STANDARDS, SEE SHEET NO. 2

CURRENT ADT: 4,800 (2005)

FUNCTIONAL CLASS: MINOR ARTERIAL



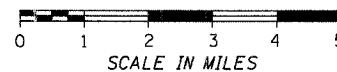
SECTION (15-2)BR
BEGINS STATION 125+95

EXISTING STRUCTURE (S.N. 041-0027)
STA. 129+81.00
THREE SPAN CONTINUOUS STEEL BEAM BRIDGE
168'-0" BK.-BK. ABUTMENTS WITH R.C. DECK 34'-5"
WIDE ON R.C. PILE BENT PIERS AND ABUTMENTS.
EXISTING R.C. DECK WILL BE REMOVED AND REPLACED.
EXISTING SUBSTRUCTURE WILL BE WIDENED AND NEW
STEEL BEAMS ADDED TO WIDEN THE DECK. THE EXISTING
STEEL BEAMS WILL BE REHABILITATED AND REUSED.

SECTION (15-2)BR
ENDS STATION 133+70

STATION EQUATION
STA 132+54.32 AHEAD =
STA 132+55.99 BACK

TOTAL LENGTH OF SECTION & PROJECT = 773.33 FEET = 0.146 MILES
NET LENGTH OF SECTION & PROJECT = 773.33 FEET = 0.146 MILES



CUMMINS ENGINEERING CORPORATION
SPRINGFIELD, ILLINOIS



Michael D. Cummins (8-9-06)
ILLINOIS PROFESSIONAL NO. 43244
(Expires 11/30/07)

STATE OF ILLINOIS
DEPARTMENT OF TRANSPORTATION
DIVISION OF HIGHWAYS

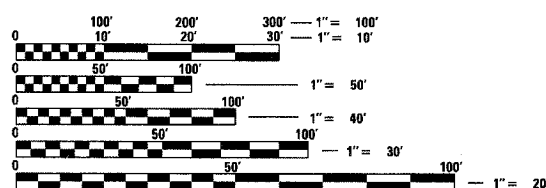
SUBMITTED Aug. 16 2006

Christina M. Reed
DEPUTY DIRECTOR OF HIGHWAYS, REGION FOUR ENGINEER

October 13, 2006
Mike Hise
ENGINEER OF DESIGN AND ENVIRONMENT

October 13, 2006
Milton P. Seer, P.E.
DIRECTOR OF HIGHWAYS, CHIEF ENGINEER

**PRINTED BY THE AUTHORITY
OF THE STATE OF ILLINOIS**



FULL SIZE PLANS HAVE BEEN PREPARED USING STANDARD
ENGINEERING SCALES. REDUCED SIZED PLANS WILL NOT
CONFORM TO STANDARD SCALES. IN MAKING MEASUREMENTS
ON REDUCED PLANS, THE ABOVE SCALES MAY BE USED.

J.U.L.I.E.
JOINT UTILITY LOCATION INFORMATION FOR EXCAVATION
1-800-892-0123

CONTRACT NO. 98958

TOWNSHIP: MOUNT VERNON

JEFFERSON COUNTY SECTION (15-2)BR F.A.P. ROUTE 821 (IL 15)

PROJECT ENGINEER: MARK DAUGHERTY (217) 342-8341
SQUAD LEADER: BRIAN LEWIS (217) 342-8360