

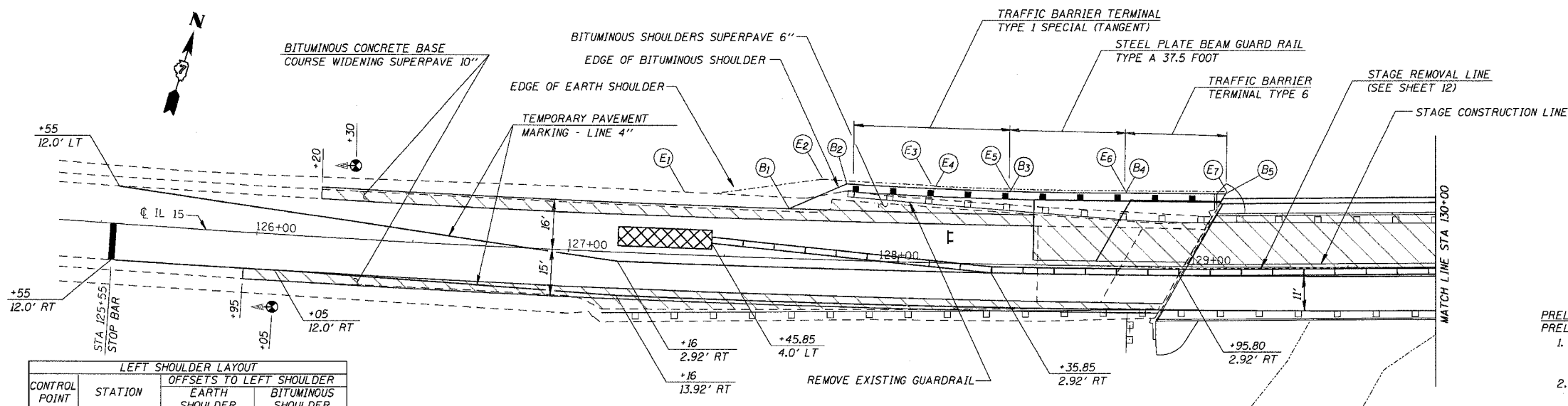
F.A.P. RTE.	SECTION	COUNTY	TOTAL SHEETS	SHEET NO.
821	(15-2)BR	JEFFERSON	33	8
STA.	TO STA.			
FED. ROAD DIST. NO.	ILLINOIS	FED. AID PROJECT		
CONTRACT NO. 98958				

LEGEND

- TEMPORARY TRAFFIC SIGNALS
- TEMPORARY IMPACT ATTENUATOR NON-DIRECTIVE TEST LEVEL 2
- TEMPORARY CONCRETE BARRIER
- DRUM WITH STEADY BURNING LIGHT
- TYPE III BARRICADE
- INDICATES REMOVAL AREA

PRELIMINARY PHASE
 PRELIMINARY PHASE CONSTRUCTION WILL CONSIST OF THE FOLLOWING:
 1. REMOVE RIGHT PAVED SHOULDER FROM STATION 125+95 TO STATION 133+40 AND CONSTRUCT BITUMINOUS CONCRETE BASE COURSE WIDENING SUPERPAVE 10"
 2. INSTALL TRAFFIC CONTROL DEVICES AS SHOWN ON STANDARD 701321 AND AS DETAILED ON THE TRAFFIC CONTROL & PROTECTION PLAN SHEET.

STAGE I
 STAGE I CONSTRUCTION WILL CONSIST OF THE FOLLOWING:
 1. REMOVE WESTBOUND GUARDRAIL AND BRIDGE RAIL
 2. REMOVE STAGE I AREAS OF PAVED SHOULDER, APPROACH SLABS, AND STRUCTURE
 3. CONSTRUCT STAGE I PORTION OF STRUCTURE
 4. CONSTRUCT APPROACH PAVEMENTS, CONNECTOR PAVEMENTS, BITUMINOUS CONCRETE BASE COURSE WIDENING, BITUMINOUS SHOULDERS AND TEMPORARY RAMPS
 5. INSTALL GUARDRAIL, TERMINALS, AND MARKERS

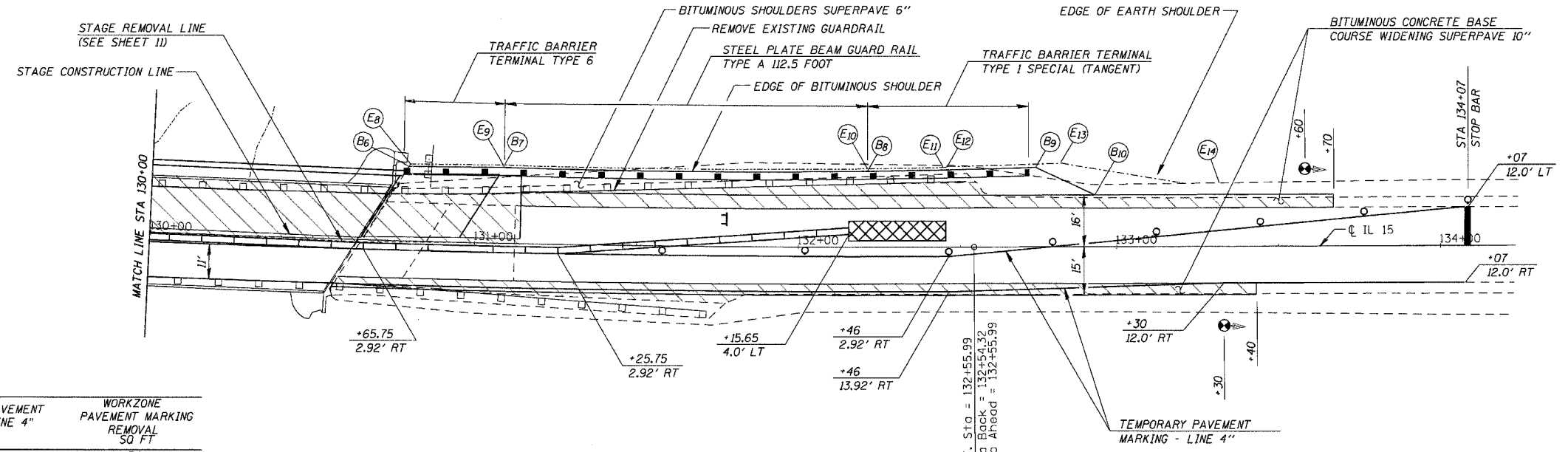


CONTROL POINT	STATION	OFFSETS TO LEFT SHOULDER	BITUMINOUS SHOULDER
E1	127+46.00	20.0	
B1	127+70.25		16.0
E2	127+81.00	25.8	
B2	127+88.60		24.5
E3	128+16.00	24.8	
E4	128+17.50	24.5	
E5	128+40.75	24.2	
B3	128+40.75		23.4
E6	128+78.30	24.2	
B4	128+78.35		23.4
E7	129+10.95	24.3	
B5	129+10.50		23.5

STAGE I WEST APPROACH

NOTES
 TEMPORARY CONCRETE BARRIER ON THE APPROACH ROADWAY SHALL BE PLACED PARALLEL TO THE C OF IL 15. TEMPORARY CONCRETE BARRIER WITHIN THE LIMITS OF THE PROPOSED STRUCTURE SHALL BE PLACED PARALLEL TO THE C OF THE PROPOSED STRUCTURE.
 SEE STANDARD 701321 FOR DETAILS NOT SHOWN.

CONTROL POINT	STATION	OFFSETS TO LEFT SHOULDER	BITUMINOUS SHOULDER
B6	130+79.20		23.0
E8	130+79.60	23.8	
E9	131+08.40	24.2	
B7	131+08.40		23.4
E10	132+21.30	24.2	
B8	132+21.30		23.4
E11	132+46.50	24.6	
E12	132+48.00	24.8	
B9	132+75.10		24.5
E13	132+83.00	25.7	
B10	132+93.30		16.0
E14	133+21.00	20.0	



STATION & OFFSET	LINE TYPE & COLOR	TEMPORARY PAVEMENT MARKING - LINE 4"	WORKZONE PAVEMENT MARKING REMOVAL SQ FT
12' LT STA 125+55 TO 2.92' RT	STA 127+16	WHITE EDGE LINE	162
2.92' RT STA 127+16 TO 2.92' RT	STA 132+46	WHITE EDGE LINE	530
2.92' RT STA 132+46 TO 12' LT	STA 134+07	WHITE EDGE LINE	160
12' RT STA 125+55 TO 12' RT	STA 126+05	WHITE EDGE LINE	50
12' RT STA 126+05 TO 13.92' RT	STA 127+16	WHITE EDGE LINE	111
13.92' RT STA 127+16 TO 13.92' RT	STA 132+46	WHITE EDGE LINE	530
13.92' RT STA 132+46 TO 12' RT	STA 133+30	WHITE EDGE LINE	82
12' RT STA 133+30 TO 12' RT	STA 134+07	WHITE EDGE LINE	77
TOTAL			1702

QUANTITIES FOR PLACEMENT AND REMOVAL OF TEMPORARY PAVEMENT MARKINGS ARE INCLUDED FOR INFORMATION ONLY. PLACING, MAINTAINING, AND REMOVING THESE ITEMS WILL NOT BE PAID FOR SEPERATELY BUT SHALL BE INCLUDED IN THE COST FOR TRAFFIC CONTROL AND PROTECTION STANDARD 701321

STAGE I EAST APPROACH

TRAFFIC CONTROL & PROTECTION
STAGE I

F.A.P. ROUTE 821 (IL 15)
 SECTION (15-2)BR
 JEFFERSON COUNTY

CUMMINS ENGINEERING CORPORATION

JOB #:	2175
FILE:	STAGE1
DATE:	6/01/06