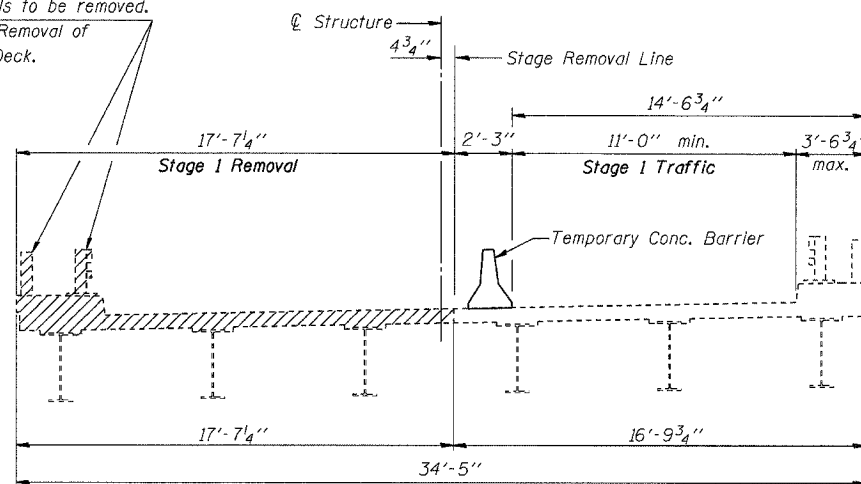
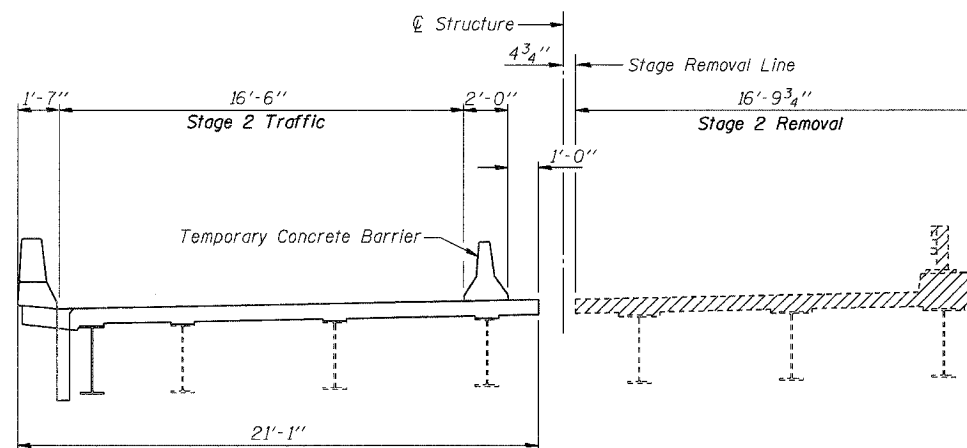


ROUTE NO.	SECTION	COUNTY	TOTAL SHEETS	SHEET NO.
F.A.P. 821	(15-2)BR	JEFFERSON	33	15
FED. ROAD DIST. NO. 7		ILLINOIS PROJECT		
Sheet 3 of 19			CONTRACT #98958	

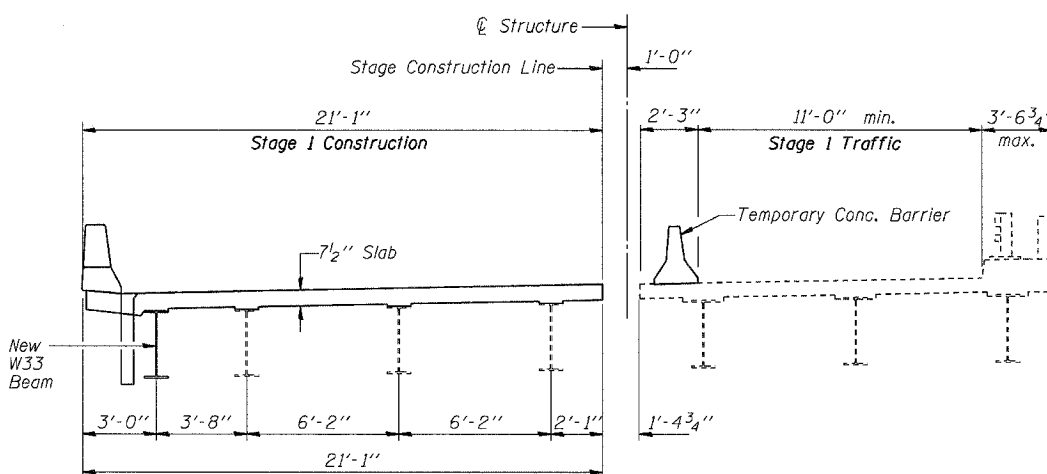
Existing Bridge Rails to be removed.
Cost included with Removal of Existing Concrete Deck.



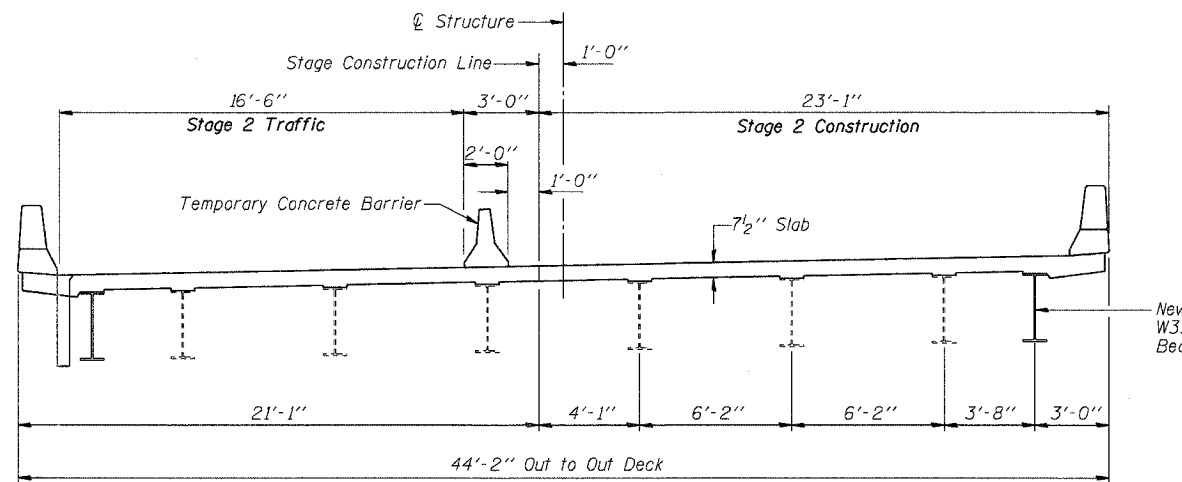
STAGE 1 REMOVAL
(Looking East)



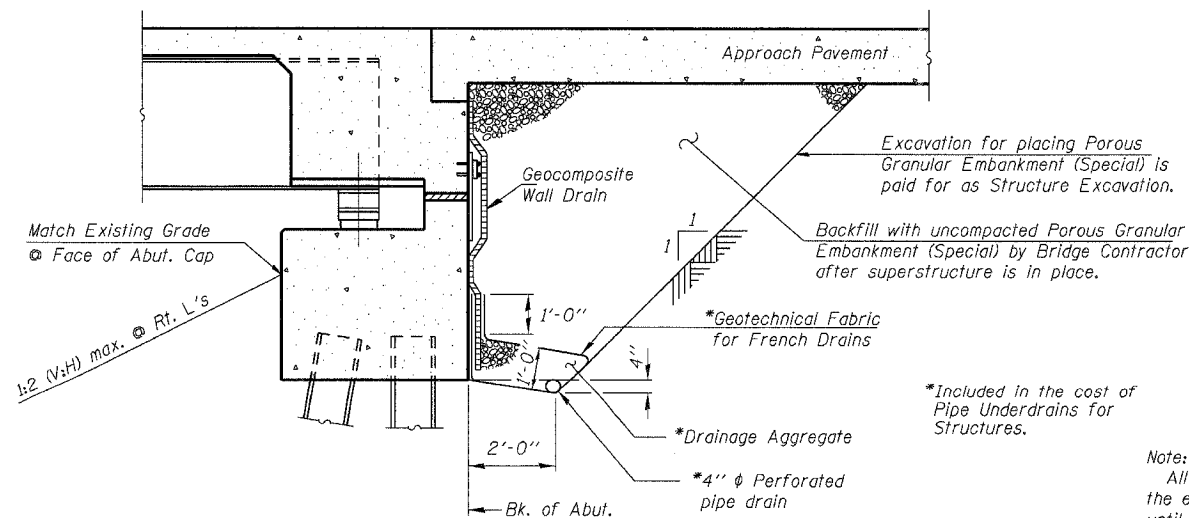
STAGE 2 REMOVAL
(Looking East)



STAGE 1 CONSTRUCTION
(Looking East)



STAGE 2 CONSTRUCTION
(Looking East)



SECTION THRU SEMI-INTEGRAL ABUTMENT
(Dimensions at Rt. L's)

Notes:
Hatched areas indicate Removal of Existing Concrete Deck.
All dimensions are at right angles.

STAGE CONSTRUCTION DETAILS

IL ROUTE 15 OVER SEVEN MILE CREEK
F.A.P. ROUTE 821 SECTION (15-2)BR
JEFFERSON COUNTY
STA. 129+81.00
S.N. 041-0027

CUMMINS ENGINEERING CORPORATION
JOB #: 2175
FILE: 2175stage
DATE: 4/10/06

DESIGNED	Ruben V. Boehler
CHECKED	Tim S. Howard
DRAWN	TSH / RVB
CHECKED	Michael D. Cummins

Note:
All drainage system components shall extend to 2'-0" from the end of each wingwall except an outlet pipe shall extend until intersecting with the side slopes. The pipes shall drain into concrete headwalls. (See Article 601.05 of the Standard Specifications and Highway Standard 601101).