

**MIN. BAR LAPS**

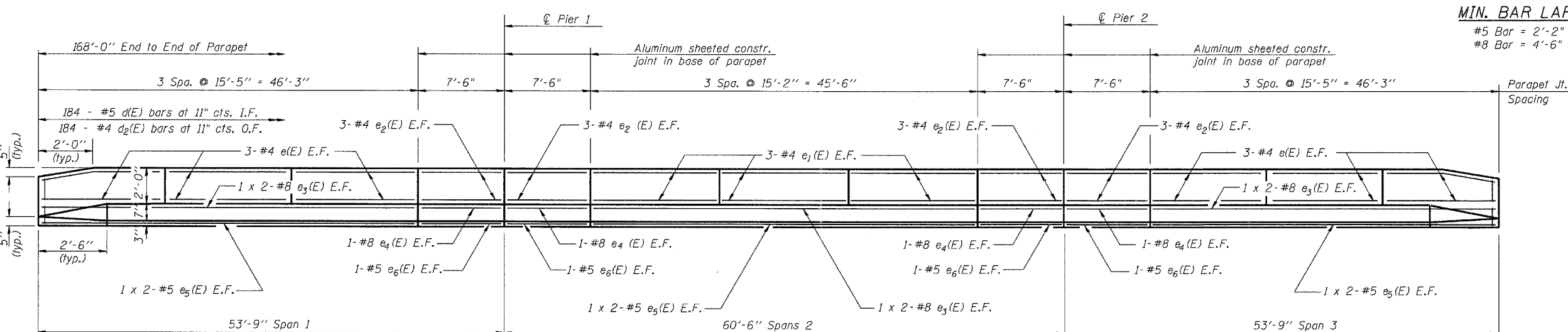
#5 Bar = 2'-2"  
#8 Bar = 4'-6"

**SUPERSTRUCTURE  
BILL OF MATERIAL**

Bar	No.	Size	Length	Shape
d(E)	484	#5	20'-7"	—
d <sub>1</sub> (E)	484	#5	22'-7"	—
d <sub>2</sub> (E)	284	#6	4'-6"	—
d <sub>3</sub> (E)	4	#5	23'-9"	—
d <sub>4</sub> (E)	4	#5	26'-0"	—
b(E)	282	#5	29'-5"	—
b <sub>1</sub> (E)	259	#5	25'-7"	—
b <sub>2</sub> (E)	88	#6	36'-0"	—
d'(E)	368	#5	3'-0"	—
d' <sub>1</sub> (E)	356	#5	2'-5"	—
d' <sub>2</sub> (E)	368	#4	3'-0"	—
d' <sub>3</sub> (E)	368	#4	3'-9"	—
d' <sub>4</sub> (E)	12	#5	2'-2"	—
e(E)	72	#4	15'-2"	—
e <sub>1</sub> (E)	36	#4	14'-11"	—
e <sub>2</sub> (E)	48	#4	7'-3"	—
e <sub>3</sub> (E)	24	#8	25'-3"	—
e <sub>4</sub> (E)	16	#8	7'-3"	—
e <sub>5</sub> (E)	24	#5	24'-1"	—
e <sub>6</sub> (E)	16	#5	7'-3"	—
m(E)	16	#6	23'-9"	—
m <sub>1</sub> (E)	16	#6	26'-0"	—
m <sub>2</sub> (E)	28	#6	6'-9"	—
m <sub>3</sub> (E)	24	#6	10'-6"	—
s(E)	84	#5	9'-5"	—
s <sub>1</sub> (E)	102	#5	7'-2"	—
u(E)	102	#5	3'-9"	—
v(E)	84	#5	3'-3"	—

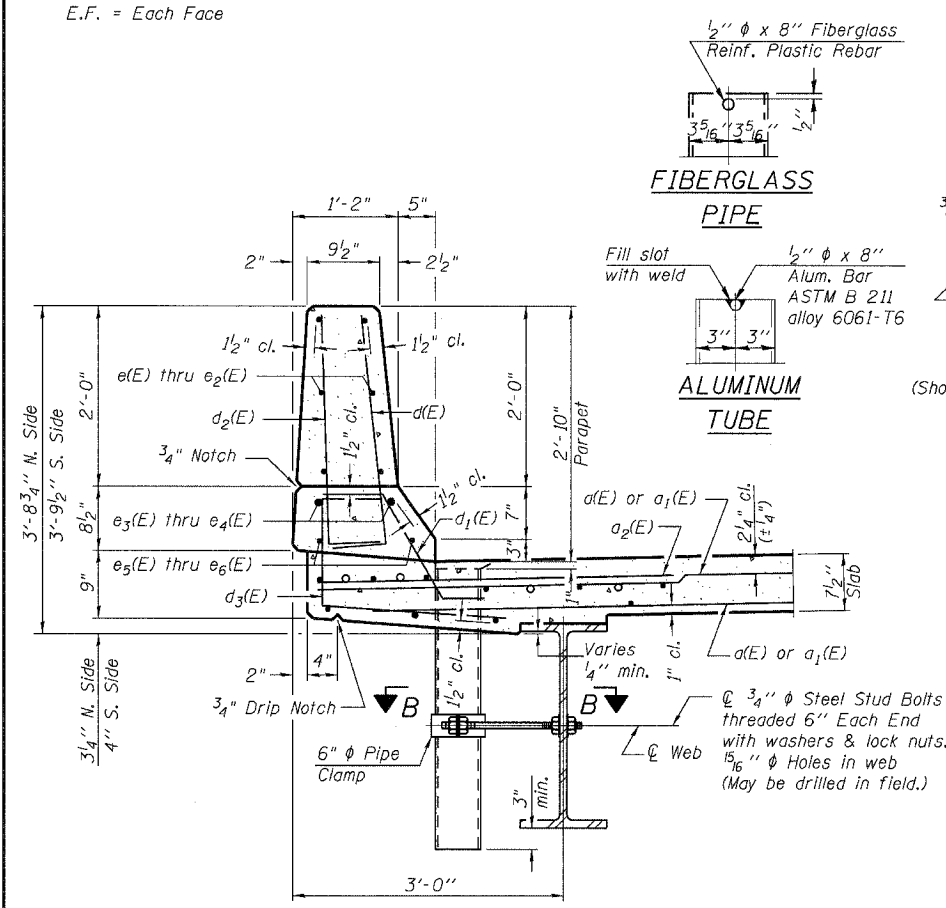
  

Reinforcement Bars, Epoxy Coated	Pound	
Concrete Superstructure	Cu. Yd.	260.0
Bar Splicers	Each	594
Floor Drains	Each	7



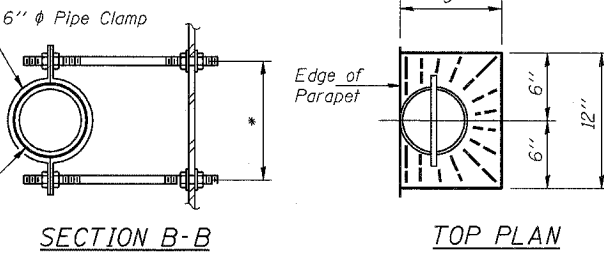
**INSIDE ELEVATION OF PARAPET**

I.F. = Inside Face  
O.F. = Outside Face  
E.F. = Each Face



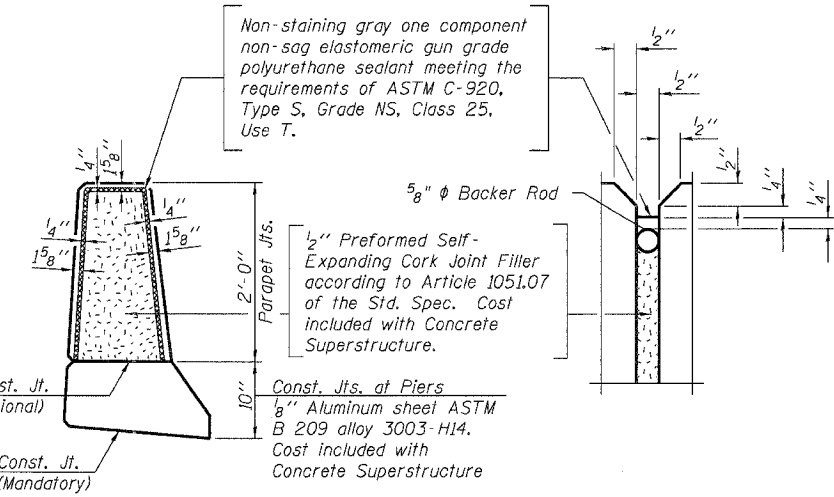
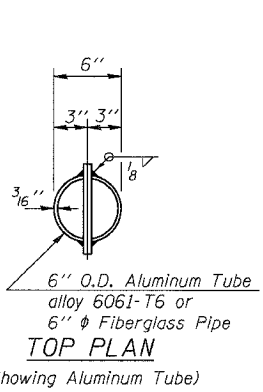
**SECTION THRU PARAPET**

\*Dimension as required by Pipe Clamp.



**SECTION B-B**

**TOP PLAN**

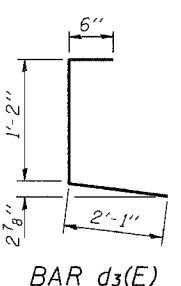


**PARAPET JOINT DETAILS**

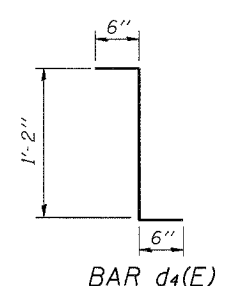
Notes:  
Floor drains need not be painted.  
Fiberglass pipe shall conform to ASTM D 2996, with short-time rupture strength hoop tensile stress of 30,000 p.s.i. minimum.

**BARS d(E) & d2(E)**

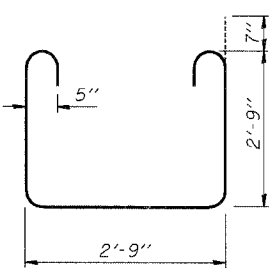
**BAR d1(E)**



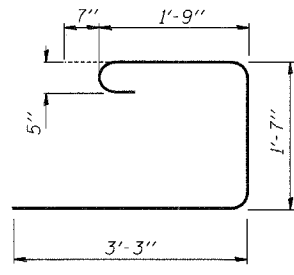
**BAR d3(E)**



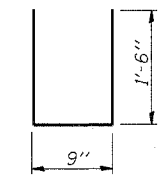
**BAR d4(E)**



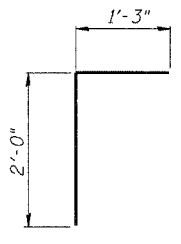
**BAR s(E)**



**BAR s1(E)**



**BAR u(E)**



**BAR v(E)**

DESIGNED Ruben V. Boehler  
CHECKED Tim S. Howard  
DRAWN TSH / RVB  
CHECKED Michael D. Cummins

Reinforcement bars designated (E) shall be epoxy coated.  
Bars indicated thus 1 x 2-#5 etc. indicates 1 line of bars with 2 lengths per line.

**SUPERSTRUCTURE DETAILS**

**IL ROUTE 15 OVER SEVEN MILE CREEK  
F.A.P. ROUTE 821 SECTION (15-2)BR  
JEFFERSON COUNTY  
STA. 129+81.00  
S.N. 041-0027**

<b>CUMMINS ENGINEERING CORPORATION</b>		JOB #: 2175
		FILE: 2175super
		DATE: 5/26/06