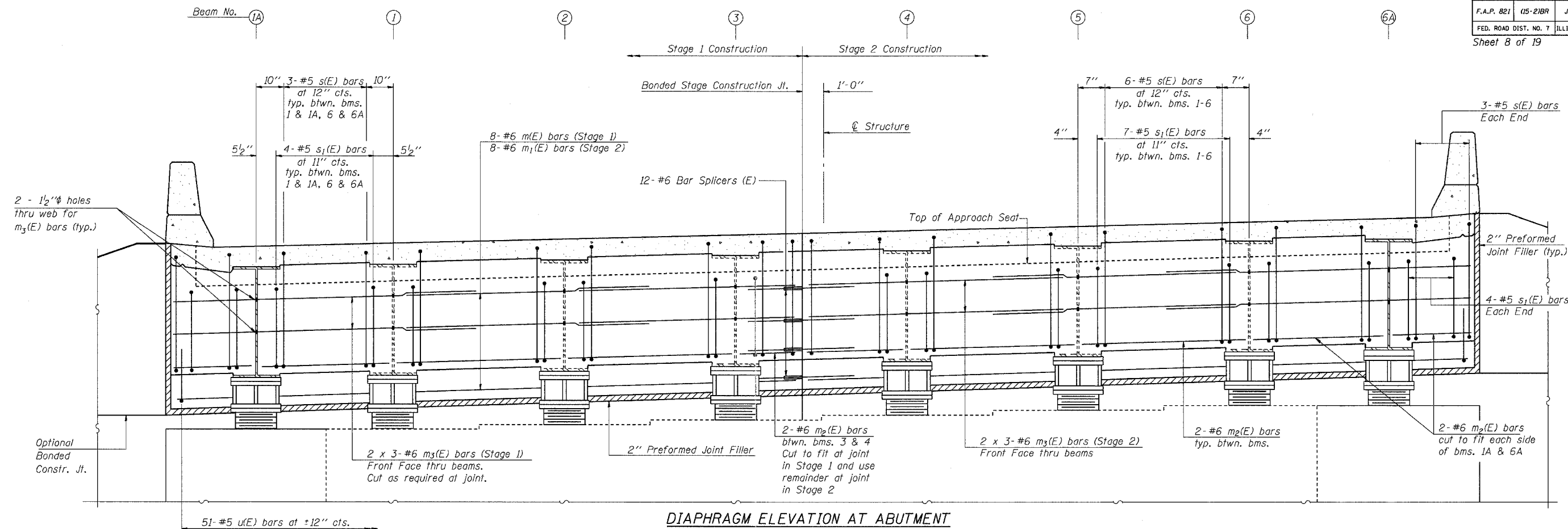
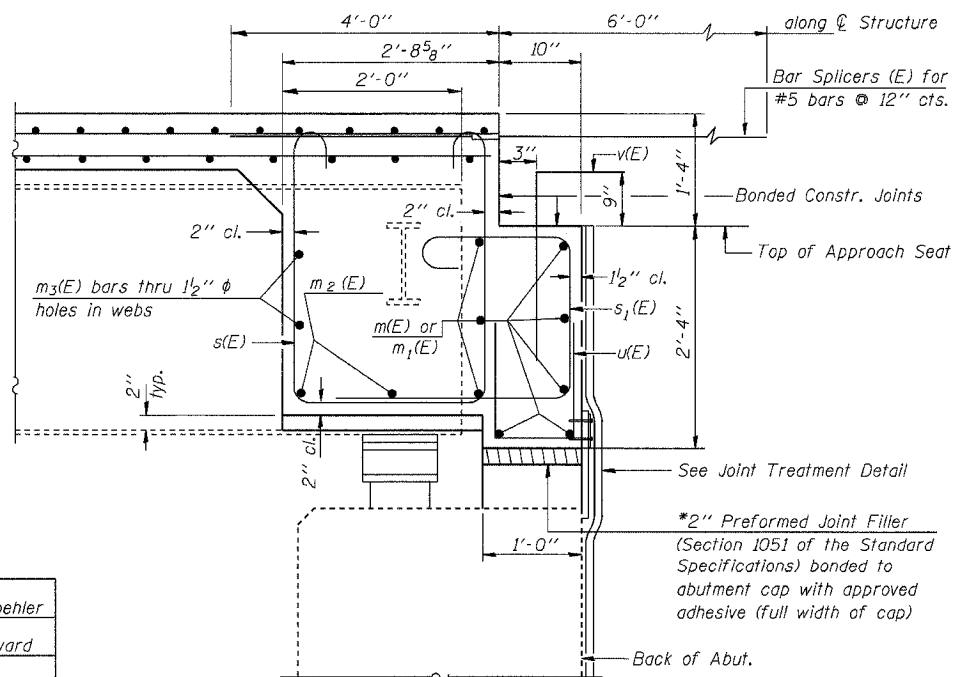


ROUTE NO.	SECTION	COUNTY	TOTAL SHEETS	SHEET NO.
F.A.P. 821	15-2JBR	JEFFERSON	33	20
FED. ROAD DIST. NO. 7	ILLINOIS	PROJECT		
Sheet 8 of 19			CONTRACT #98958	



DIAPHRAGM ELEVATION AT ABUTMENT

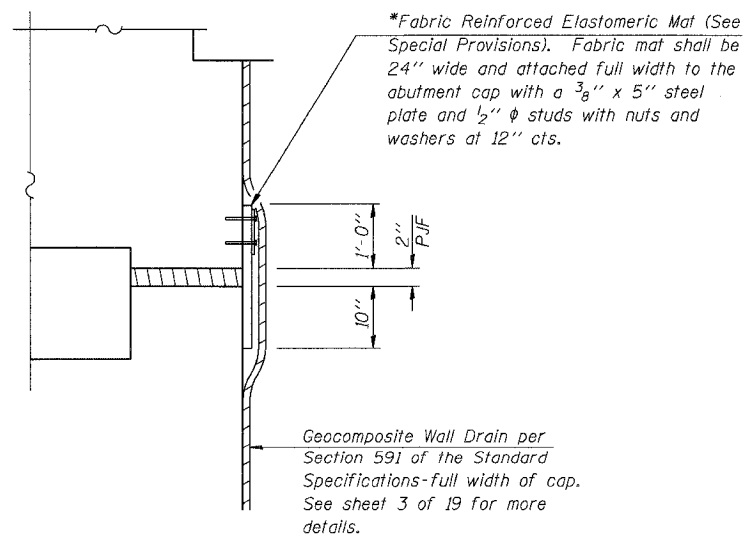
(East Abutment Shown - Looking East)
(West Abutment Similar)



SECTION A-A

(Dimensions at right angles to abutment, except as shown.)

*Cost Included with Concrete Superstructure



JOINT TREATMENT DETAIL

MIN. BAR LAP

#5 bar = 2'-2"
#6 bar = 2'-9"

Notes: Reinforcement bars designated (E) shall be epoxy coated. Bars indicated thus 2 x 3-#6 etc. indicates 2 lines of bars with 3 lengths per line. Reinforcement bars in diaphragm are billed with superstructure on sheet 7 of 19. Concrete in diaphragm is included with Concrete Superstructure on sheet 7 of 19. The s(E) and s1(E) bars shall be placed parallel to the beams. Spacing for these bars shall be at right angles to the beams. For details of bars u(E), s(E), and s1(E) see sheet 7 of 19. For location of drilled holes in beams see sheet 10 of 19.

DIAPHRAGM DETAILS

IL ROUTE 15 OVER SEVEN MILE CREEK
F.A.P. ROUTE 821 SECTION (15-2)BR
JEFFERSON COUNTY
STA. 129+81.00
S.N. 041-0027

DESIGNED	Ruben V. Boehler
CHECKED	Tim S. Howard
DRAWN	TSH / RVB
CHECKED	Michael D. Cummins