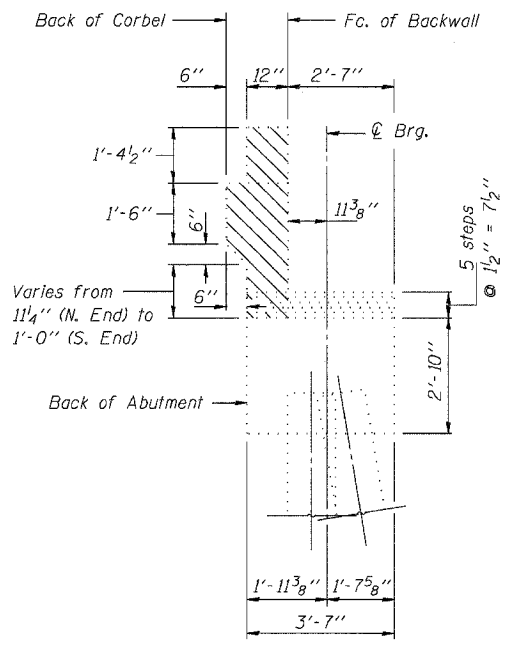
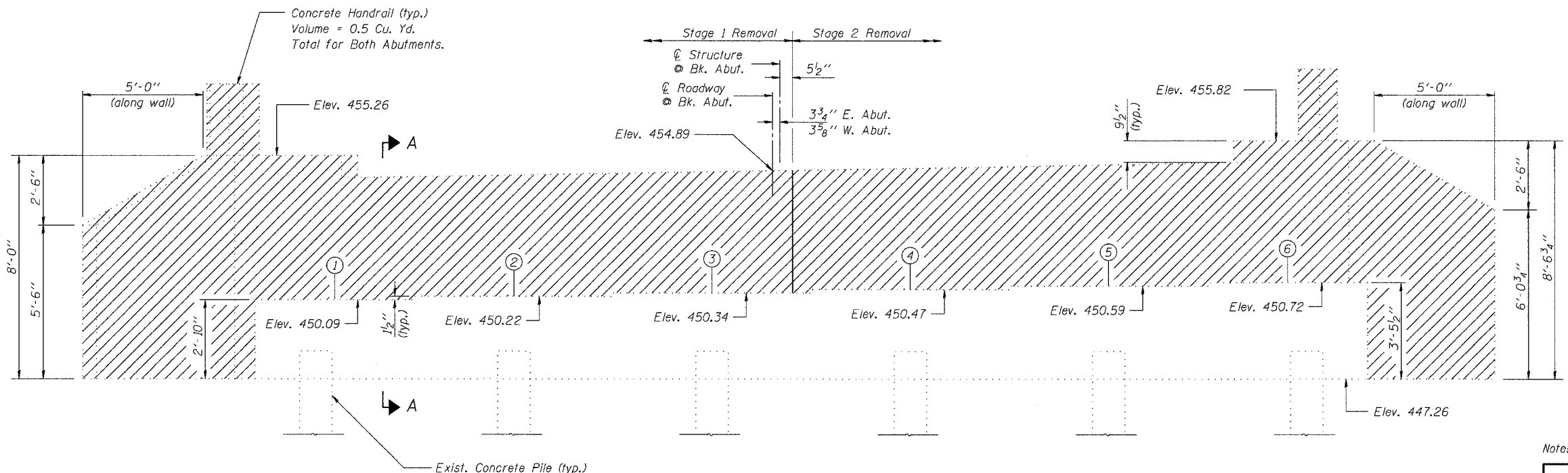


**PLAN**  
(Stage Removal Shown @ E. Abut.)  
(Similar @ W. Abut. but Opposite Hand)



**SEC. A-A**  
(Dimensions at Rt. Δ's)



**ELEVATION**  
(Looking East @ Either Abut.)

**TWO ABUTMENTS  
BILL OF MATERIAL**

Item	Unit	Total
Concrete Removal	Cu. Yd.	25.0

Note: Hatched area indicates Concrete Removal.

DESIGNED	Ruben V. Boehler
CHECKED	Tim S. Howard
DRAWN	TSH / RVB
CHECKED	Michael D. Cummins

**NOTE**  
Plan elevations relative to the existing structure have been taken from existing plans and reduced by 0.40 feet to match benchmark datum.

**ABUTMENT CONCRETE REMOVAL DETAILS**

IL ROUTE 15 OVER SEVEN MILE CREEK  
F.A.P. ROUTE 821 SECTION (15-2)BR  
JEFFERSON COUNTY  
STA. 129+81.00  
S.N. 041-0027

CUMMINS ENGINEERING CORPORATION

JOB #:	2175
FILE:	2175abutold
DATE:	4/10/06