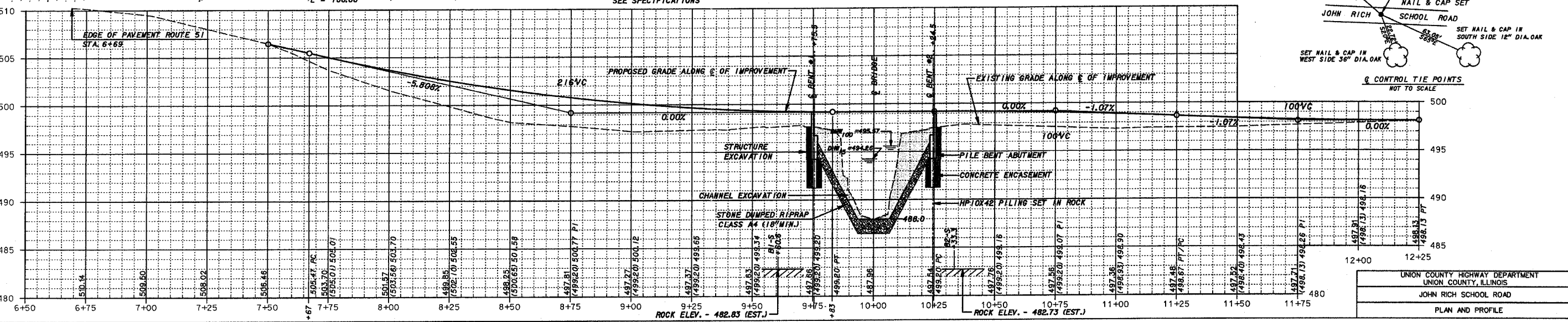
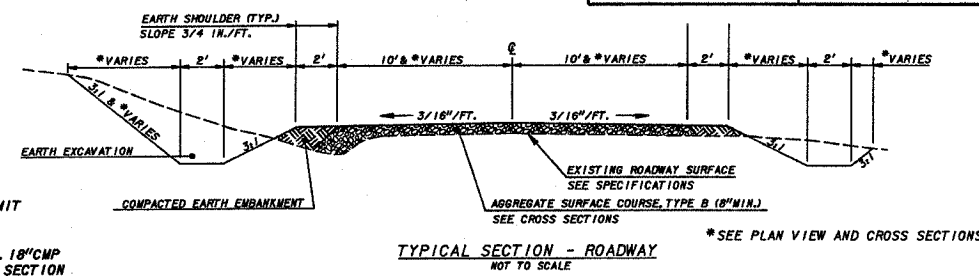
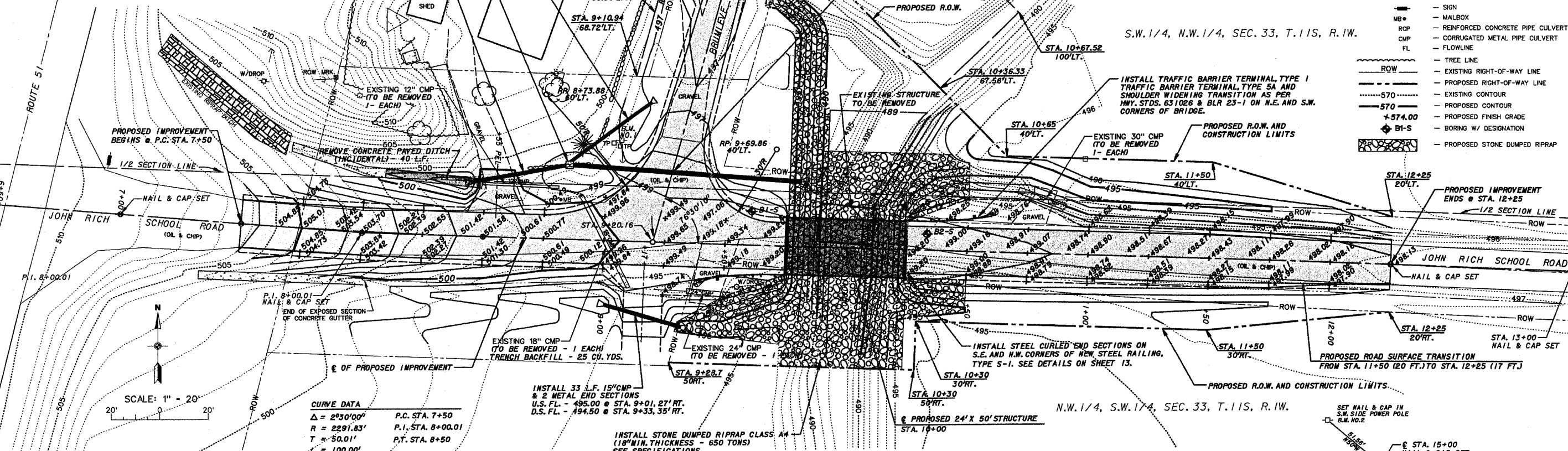
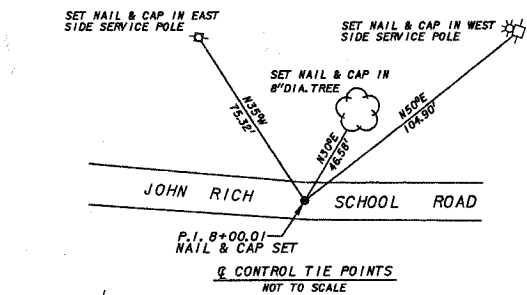


NOTES

1. ALL PHYSICAL FEATURES DEPICTED BY THIS SURVEY WERE CONDITIONS AS OF MAY 2004.
2. THE ACCURACY OF THE HORIZONTAL AND VERTICAL TOPOGRAPHIC FEATURES DEPICTED HEREON WERE DERIVED BY SURVEY METHODS THAT EXCEED THE ACCURACY OF THE PLOTTED DOCUMENT AS DEFINED BY THE MAP SCALE. THE USE OF THIS SURVEY INFORMATION IN A DIGITAL ENVIRONMENT, CAD OR GIS SHALL NOT BE RELIED UPON TO AN ACCURACY GREATER THAN THAT OF THE MAP SCALE.
3. NO UNDERGROUND UTILITIES WERE LOCATED BY THIS SURVEY. THE POSITION OF ALL UNDERGROUND UTILITIES ARE APPROXIMATE AS SHOWN. THE LOCATIONS HAVE BEEN DETERMINED FROM THE BEST AVAILABLE INFORMATION. THE EXISTENCE AND POSITION OF ANY UNDERGROUND UTILITIES SHOULD BE VERIFIED PRIOR TO ANY CONSTRUCTION.



ROUTE	SECTION	COUNTY	TOWNSHIP	TOTAL SHEETS	SHEET NUMBER
T.R. 93	04-01178-00-BR	UNION	SEC. 33, T11S, R1W	14	2
JOB NO. C-99-545-04				PROJECT NO. BROS-181(22)	
JOHN RICH SCHOOL ROAD				CONTRACT NO. 99271	

UNION COUNTY HIGHWAY DEPARTMENT
UNION COUNTY, ILLINOIS
JOHN RICH SCHOOL ROAD
PLAN AND PROFILE