

SUMMARY OF QUANTITIES				RURAL			90% FEDERAL 10% STATE		
CODE NO	ITEM	UNIT	TOTAL QUANTITIES	CONSTRUCTION TYPE CODE					
				0004	0013				
31200500	STABILIZED SUBBASE - HOT-MIX ASPHALT, 4"	SO YD	5432	5432					
35101400	AGGREGATE BASE COURSE, TYPE B	TON	9526	9526					
35501300	HOT-MIX ASPHALT BASE COURSE, 4"	SO YD	17782	17782					
35501303	HOT-MIX ASPHALT BASE COURSE, 4 3/4"	SO YD	43158	43158					
35501312	HOT-MIX ASPHALT BASE COURSE, 7"	SO YD	26830	26830					
35501332	HOT-MIX ASPHALT BASE COURSE, 12"	SO YD	35114	35114					
40200800	AGGREGATE SURFACE COURSE, TYPE B	TON	36	36					
40201000	AGGREGATE FOR TEMPORARY ACCESS	TON	282	282					
40600290	BITUMINOUS MATERIALS (TACK COAT)	POUND	275469	275469					
40600982	HOT-MIX ASPHALT SURFACE REMOVAL - BUTT JOINT	SO YD	93	93					
40603085	HOT-MIX ASPHALT BINDER COURSE, IL-19.0, N70	TON	27505	27505					
40603090	HOT-MIX ASPHALT BINDER COURSE, IL-19.0, N90	TON	101117	101117					
40603153	POLYMERIZED HOT-MIX ASPHALT SURFACE COURSE, STONE MATRIX ASPHALT, N80	TON	29131	29131					

SUMMARY OF QUANTITIES				RURAL			90% FEDERAL 10% STATE		
CODE NO	ITEM	UNIT	TOTAL QUANTITIES	CONSTRUCTION TYPE CODE					
				0004	0013				
40603240	POLYMERIZED HOT-MIX ASPHALT BINDER COURSE, IL-19.0, N90	TON	43049	43049					
40603315	HOT-MIX ASPHALT SURFACE COURSE, MIX "C", N70	TON	11503	11503					
40603545	POLYMERIZED HOT-MIX ASPHALT SURFACE COURSE, MIX "D", N90	TON	5726	5726					
42000501	PORTLAND CEMENT CONCRETE PAVEMENT 10" (JOINTED)	SO YD	3021	3021					
42000510	PORTLAND CEMENT CONCRETE PAVEMENT 10 1/2"	SO YD	3113	3113					
420101300	PROTECTIVE COAT	SO YD	5286	5286					
42400100	PORTLAND CEMENT CONCRETE SIDEWALK 4 INCH	SO FT	284	284					
44000100	PAVEMENT REMOVAL	SO YD	43180	43180					
44000173	HOT-MIX ASPHALT SURFACE REMOVAL, 6"	SO YD	183938	183938					
44000177	HOT-MIX ASPHALT SURFACE REMOVAL, 7"	SO YD	26830	26830					
44000500	COMBINATION CURB AND GUTTER REMOVAL	FOOT	114	114					
44004000	PAVED DITCH REMOVAL	FOOT	864	864					

12

Rev. 10-26-17

FILE NAME =	USER NAME = steffenmk	DESIGNED -	REVISED -	<b>STATE OF ILLINOIS DEPARTMENT OF TRANSPORTATION</b>	<b>SUMMARY OF QUANTITIES</b>				F.A.T. RTE.	SECTION	COUNTY	TOTAL SHEETS	SHEET NO.
Default	Documents\1001 Of fics\District 7\Projects\748	CHECKED -	REVISED -						TO	(25-1,2JR	EFFINGHAM	424	5
	PLOT SCALE = 100.0000 ' / in.	DATE -	REVISED -		SCALE:	SHEET	OF	SHEETS	STA.	TO STA.	CONTRACT NO. 74664		
	PLOT DATE = 8/25/2017										ILLINOIS FED. AID PROJECT		

Rev

SUMMARY OF QUANTITIES			RURAL	90% FEDERAL 10% STATE	
CODE NO	ITEM	UNIT	TOTAL QUANTITIES	CONSTRUCTION TYPE CODE	
				0004	0013
44004250	PAVED SHOULDER REMOVAL	SQ YD	60805	60805	
44200192	PAVEMENT PATCHING, TYPE II, 16 INCH	SQ YD	184	184	
48101500	AGGREGATE SHOULDERS, TYPE B 6"	SQ YD	30657	30657	
48101620	AGGREGATE SHOULDERS, TYPE B 10"	SQ YD	4908	4908	
48102100	AGGREGATE WEDGE SHOULDER, TYPE B	TON	217	217	
48203021	HOT-MIX ASPHALT SHOULDERS, 6"	SQ YD	6949	6949	
48300500	PORTLAND CEMENT CONCRETE SHOULDERS 10"	SQ YD	2265	2265	
50102400	CONCRETE REMOVAL	CU YD	37.2	37.2	
50105220	PIPE CULVERT REMOVAL	FOOT	13	13	
50200100	STRUCTURE EXCAVATION	CU YD	2350	2350	
50300225	CONCRETE STRUCTURES	CU YD	65.2	65.2	
50800105	REINFORCEMENT BARS	POUND	597168	13748	583420
50800205	REINFORCEMENT BARS, EPOXY COATED	POUND	26340	26340	
50900200	STEEL RAILING, TYPE 2399	FOOT	1874	1874	

SUMMARY OF QUANTITIES			RURAL	90% FEDERAL 10% STATE	
CODE NO	ITEM	UNIT	TOTAL QUANTITIES	CONSTRUCTION TYPE CODE	
				0004	0013
54001001	BOX CULVERT END SECTIONS, CULVERT NO. 1	EACH	1	1	
54002020	EXPANSION BOLTS 3/4 INCH	EACH	765	26	739
54003000	CONCRETE BOX CULVERTS	CU YD	2267		2267
54010603	PRECAST CONCRETE BOX CULVERTS 6' X 3'	FOOT	6	6	
54213669	PRECAST REINFORCED CONCRETE FLARED END SECTIONS 24"	EACH	6	6	
54213699	PRECAST REINFORCED CONCRETE FLARED END SECTIONS 54"	EACH	1	1	
54213717	PRECAST REINFORCED CONCRETE FLARED END SECTIONS 72"	EACH	1	1	
54214509	PRECAST REINFORCED CONCRETE FLARED END SECTIONS, EQUIVALENT ROUND-SIZE 24"	EACH	4	4	
54215424	CAST-IN-PLACE REINFORCED CONCRETE END SECTIONS 24"	EACH	2	2	
54215454	CAST-IN-PLACE REINFORCED CONCRETE END SECTIONS 54"	EACH	1	1	
54215460	CAST-IN-PLACE REINFORCED CONCRETE END SECTIONS 60"	EACH	2	2	

14

11

Rev. 10-26-17

SUMMARY OF QUANTITIES			RURAL	90% FEDERAL 10% STATE			SUMMARY OF QUANTITIES			RURAL	90% FEDERAL 10% STATE			
CODE NO	ITEM	UNIT	TOTAL QUANTITIES	CONSTRUCTION TYPE CODE			CODE NO	ITEM	UNIT	TOTAL QUANTITIES	CONSTRUCTION TYPE CODE			
				0004	0013						0004	0013		
70103815	TRAFFIC CONTROL SURVEILLANCE	CAL DA	10	10			* 72501000	TERMINAL MARKER - DIRECT APPLIED	EACH	59	59			
70107005	PAVEMENT MARKING BLACKOUT TAPE, 5"	FOOT	3830	3830			72700100	STRUCTURAL STEEL SIGN SUPPORT - BREAKAWAY	POUND	11430	11430			
70107007	PAVEMENT MARKING BLACKOUT TAPE, 7"	FOOT	2200	2200			72800100	TELESCOPING STEEL SIGN SUPPORT	FOOT	150	150			
70200100	NIGHTTIME WORK ZONE LIGHTING	LSUM	1	1			73400100	CONCRETE FOUNDATIONS	CU YD	24.1	24.1			
70300150	SHORT TERM PAVEMENT MARKING REMOVAL	SO FT	2539	2539			73700100	REMOVE GROUND MOUNTED SIGN SUPPORT	EACH	13	13			
70300220	TEMPORARY PAVEMENT MARKING - LINE 4"	FOOT	186854	186854			73700200	REMOVE CONCRETE FOUNDATION - GROUND MOUNT	EACH	13	13			
70400100	TEMPORARY CONCRETE BARRIER	FOOT	93885	93885			* 78003130	PREFORMED PLASTIC PAVEMENT MARKING, TYPE B - LINE 6"	FOOT	187324	187324			
70500100	TEMPORARY STEEL PLATE BEAM GUARDRAIL, TYPE A	FOOT	737.5	737.5			* 78003140	PREFORMED PLASTIC PAVEMENT MARKING, TYPE B - LINE 8"	FOOT	3062	3062			
70500615	TEMPORARY TRAFFIC BARRIER TERMINAL, TYPE 1	EACH	10	10			* 78004230	PREFORMED PLASTIC PAVEMENT MARKING, TYPE B - INLAID - LINE 6"	FOOT	10510	10510			
70500625	TEMPORARY TRAFFIC BARRIER TERMINAL, TYPE 2	EACH	9	9			* 78100100	RAISED REFLECTIVE PAVEMENT MARKER	EACH	2370	2370			
70500665	TEMPORARY TRAFFIC BARRIER TERMINAL, TYPE 6	EACH	1	1			* 78200005	GUARDRAIL REFLECTORS, TYPE A	EACH	281	281			
70600260	IMPACT ATTENUATORS, TEMPORARY (FULLY REDIRECTIVE, NARROW), TEST LEVEL 3	EACH	4	4			89502380	REMOVE EXISTING HANDHOLE	EACH	3	3			
* 72400730	RELOCATE SIGN PANEL - TYPE 3	SO FT	900	900										
72500100	OBJECT MARKER - TYPE 1	EACH	120	120										

14 \* SPECIALTY ITEM

12

Rev. 10-26-17

RURAL				90% FEDERAL 10% STATE			RURAL				90% FEDERAL 10% STATE		
SUMMARY OF QUANTITIES				CONSTRUCTION TYPE CODE			SUMMARY OF QUANTITIES				CONSTRUCTION TYPE CODE		
CODE NO	ITEM	UNIT	TOTAL QUANTITIES	0004	0013		CODE NO	ITEM	UNIT	TOTAL QUANTITIES	0004	0013	
X0327980	PAVEMENT MARKING REMOVAL - WATER BLASTING	SO FT	70434	70434			X7040125	PINNING TEMPORARY CONCRETE BARRIER	EACH	837	837		
X0800005	AGGREGATE SHOULDERS, TYPE B 12"	SO YD	1637	1637			X7270008	BREAKAWAY SIGN SUPPORT COUPLER	EACH	30	30		
X1200107	PIPE UNDERDRAINS 6" (MODIFIED)	FOOT	163413	163413			X7810400	TEMPORARY RAISED PAVEMENT MARKER	EACH	417	417		
X4401198	HOT-MIX ASPHALT SURFACE REMOVAL, VARIABLE DEPTH	SO YD	880	880			X7830074	GROOVING FOR RECESSED PAVEMENT MARKING 7"	FOOT	187324	187324		
X4406060	PARTIAL DEPTH REMOVAL, TYPE I, 6"	SO YD	807	807			X7830076	GROOVING FOR RECESSED PAVEMENT MARKING 9"	FOOT	3062	3062		
X4421000	PARTIAL DEPTH PATCHING	TON	272	272			Z0005010	HOT-MIX ASPHALT FOR PATCHING POTHOLES (COLD MIX)	TON	20	20		
X5012650	CONCRETE HEADWALL REMOVAL SPECIAL	EACH	255	255			Z0005600	BREAKING PAVED DITCH	FOOT	623	623		
X6060066	COMBINATION CONCRETE CURB AND GUTTER, TYPE B-9.24 (SPECIAL)	FOOT	114	114			Z0008758	AERIAL SPEED CHECK MARKING	FOOT	144	144		
X6311217	TRAFFIC BARRIER TERMINAL, TYPE 6B (SPECIAL)	EACH	16	16			Z0016702	DETOUR SIGNING	LSUM	1	1		
X6340205	GUARD POSTS REMOVAL	EACH	35	35			Z0033700	LONGITUDINAL JOINT SEALANT	FOOT	84033	84033		
X6350120	DELINEATOR REMOVAL	EACH	252	252			Z0034105	MATERIAL TRANSFER DEVICE	TON	169701	169701		
X6430110	REMOVE IMPACT ATTENUATORS, SALVAGE	EACH	8	8			Z0042505	POST REMOVAL AND REPLACEMENT	EACH	6	6		
X7015005	CHANGEABLE MESSAGE SIGN	CAL DA	4050	4050			Z0049799	PROTECTING OR RESETTING SURVEY MARKERS	EACH	36	36		
							Z0054505	ROCK FILL - REPLACEMENT	TON	1133	1133		

\* SPECIALTY ITEM

Rev. 10-26-17

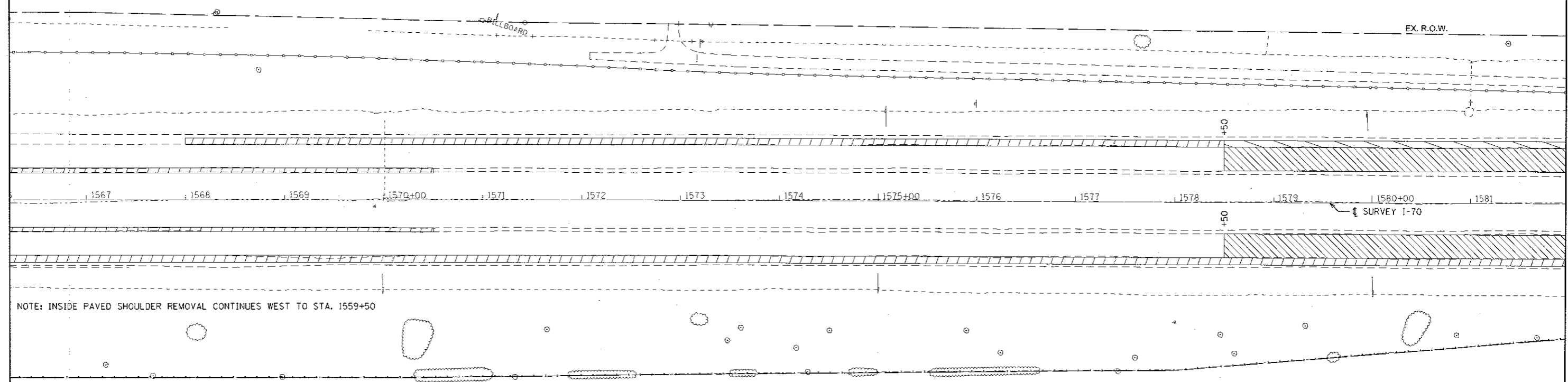
FILE NAME =	USER NAME = steffennk	DESIGNED -	REVISED -	STATE OF ILLINOIS DEPARTMENT OF TRANSPORTATION	SUMMARY OF QUANTITIES	F.A.I. RTE.	SECTION	COUNTY	TOTAL SHEETS	SHEET NO.
path\IL884EBIDINTEG\Illinois.gov\FWIDOT\Documents\DOT Offices\District 7\Projects\7466\Drawings\CA\Sheet\2774664-sht-500.dgn	PROJECT = 7466	CHECKED -	REVISED -			TO	(25-1.2R)	EFFINGHAM	424	11
Default	PLOT SCALE = 100.0000 1/ in.	DATE -	REVISED -			SCALE:	SHEET OF SHEETS STA.	CONTRACT NO. 74664		ILLINOIS FED. AID PROJECT
	PLOT DATE = 8/25/2017									

SCHEDULE FOR HMA PAVING ON RAMPS													
STATION TO STATION	LENGTH (FOOT)	PAVEMENT WIDTH (FOOT)	PAVEMENT REMOVAL (SQ YD)	BITUMINOUS MATERIALS (TACK COAT) (POUND)	SUBBASE GRANULAR MATERIAL, TYPE C (TON)	HOT-MIX ASPHALT BINDER COURSE, IL-19.0, N70 (TON)	HOT-MIX ASPHALT SURFACE COURSE, MIX "C", N70 (TON)	HOT-MIX ASPHALT BINDER COURSE, IL-19.0, N90 (TON)	POLYMERIZED HOT-MIX ASPHALT BINDER COURSE, IL-19.0, N90 (TON)	POLYMERIZED HOT-MIX ASPHALT SURFACE COURSE, MIX "D", N90 (TON)	HOT-MIX ASPHALT BASE COURSE, 4 3/4" (SQ YD)	AGGREGATE WEDGE SHOULDERS, TYPE B (TON)	
REST AREA RAMP A 1741+93. TO 1747+00.	507.0	14.0	822.5	744	76.7	96.5	24.1	241.4	86.2	69.0	615.7		
1747+00. TO 1748+68.	168.0	15.0		375		52.5	28.6		43.1	23.5		17.5	
REST AREA RAMP A TOTALS			822.5	1119	76.7	149.0	52.7	241.4	129.3	92.5	615.7	17.5	
REST AREA RAMP B 1766+97. TO 1777+67.	1070.0	16.0		960		32.3	18.4		246.5	140.8			
REST AREA RAMP B TOTALS			0.0	960	0.0	32.3	18.4	0.0	246.5	140.8	0.0	0.0	
REST AREA RAMP C 1783+33. TO 1790+55.	722.0	16.0		1074		105.9	60.5		205.8	117.6			
REST AREA RAMP C TOTALS			0.0	1074	0.0	105.9	60.5	0.0	205.8	117.6	0.0	0.0	
REST AREA RAMP D 1754+40. TO 1765+00.	1060.0	16.0		1012		41.3	23.6		252.6	144.3			
REST AREA RAMP D TOTALS			0.0	1012	0.0	41.3	23.6	0.0	252.6	144.3	0.0	0.0	
TOTALS			823	4170	77	329	155	241	834	495	616	18	

SCHEDULE FOR CONCRETE PAVING ON RAMPS												
STATION TO STATION	LENGTH (FOOT)	PAVEMENT WIDTH (FOOT)	PAVEMENT REMOVAL (SQ YD)	STABILIZED SUBBASE - HOT-MIX ASPHALT 4" (SQ YD)	PORTLAND CEMENT CONCRETE PAVEMENT 10" (JOINTED) (SQ YD)	PAVED SHOULDER REMOVAL (SQ YD)	PORTLAND CEMENT CONCRETE SHOULDERS 10" (SQ YD)	PROTECTIVE COAT (SQ YD)	COMBINATION CONCRETE CURB AND GUTTER REMOVAL (FOOT)	COMBINATION CONCRETE CURB AND GUTTER, TYPE B9.24 (SPECIAL) (FOOT)	AGGREGATE WEDGE SHOULDERS, TYPE B (TON)	
REST AREA RAMP A 1748+68. TO 1749+38.	70.00	16.0	200.0	241.1	124.4	34.5	108.9	233.3			7.3	
1749+38. TO 1754+51.	513.00	16.0	866.0	1173.1	915.6	214.9	228.9	1144.5			53.6	
REST AREA RAMP A TOTALS			1066.0	1414.2	1040.0	249.4	337.8	1377.8	0.0	0.0	60.9	
REST AREA RAMP B 1764+45. TO 1765+42.	97.00	16.0	256.7	361.0	202.7	133.0	152.0	354.7	114	114	5.9	
1765+42. TO 1766+97.	155.00	16.0	279.6	612.9	277.3	260.1	318.2	595.5			16.2	
REST AREA RAMP B TOTALS			536.3	973.9	480.0	393.1	470.2	950.2	114.0	114.0	22.1	
REST AREA RAMP C 1777+73. TO 1783+33.	560.00	16.0	500.0	2064.3	1000.9	900.0	1000.9	2001.8			58.6	
REST AREA RAMP C TOTALS			500.0	2064.3	1000.9	900.0	1000.9	2001.8	0.0	0.0	58.6	
REST AREA RAMP D 1765+00. TO 1766+42.	142.00	16.0	738.7	535.8	250.7	229.5	269.4	520.1			14.7	
1766+42. TO 1767+74.	132.00	16.0	246.9	443.3	248.9	159.0	186.7	435.6			7.3	
REST AREA RAMP D TOTALS			985.6	979.1	499.6	388.5	456.1	955.7	0.0	0.0	22.0	
TOTALS			3088	5432	3021	1931	2265	5286	114	114	164	

▲ SHEET REPLACED 10-26-17

FILE NAME :	USER NAME = steffennk	DESIGNED -	REVISED -	<b>STATE OF ILLINOIS DEPARTMENT OF TRANSPORTATION</b>	<b>SCHEDULES OF QUANTITIES</b>				F.A.I. RTE.	SECTION	COUNTY	TOTAL SHEETS	SHEET NO.
Default	Documents\IDOT Offices\District 7\Projects\7466\Drawings\CA0\sheets\0774664-sht-schedule	CHECKED -	REVISED -						70	(25-1,2)R	EFFINGHAM	424	25
	PLOT SCALE = 100.0000' / 1"	DATE -	REVISED -		SCALE:	SHEET	OF	SHEETS	STA.	TO STA.	CONTRACT NO. 74664		
	PLOT DATE = 10/25/2017										ILLINOIS FED. AID PROJECT		



- LEGEND:**
- PAVEMENT REMOVAL
  - PAVED SHOULDER REMOVAL
  - TREE REMOVAL
  - HMA SURFACE REMOVAL 6" AND RUBBLIZING PCC PAVEMENT
  - HMA SURFACE REMOVAL 7"

FILE NAME =	USER NAME = steffanmk	DESIGNED -	REVISED -
p:\N.R.084EBIDINTEG.illinois.gov\FWIDOT\Documents\100T Offices\District 7\Projects\7466	ORANN to\CARsheets\0774664-sht-plan2.dwg	CHECKED -	REVISED -
Default	PLOT DATE = 10/26/2017	DATE -	REVISED -

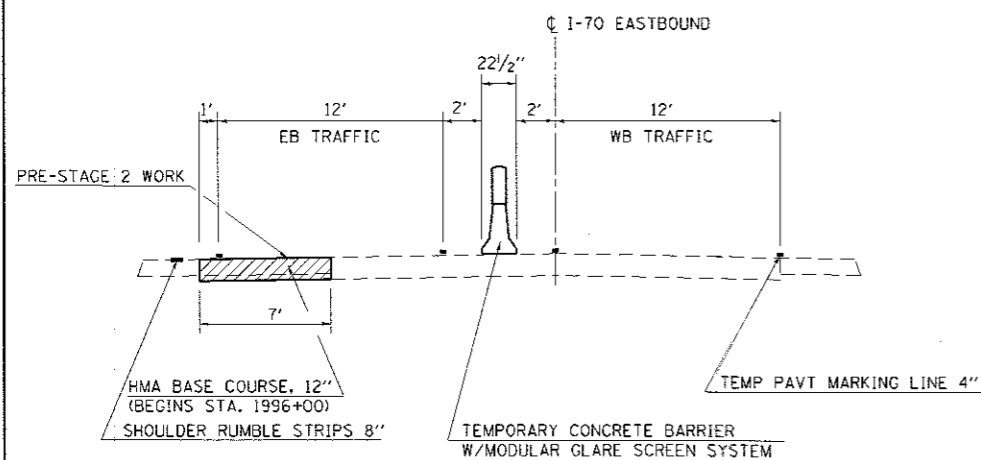
**STATE OF ILLINOIS  
DEPARTMENT OF TRANSPORTATION**

<b>REMOVAL ITEMS</b>			
SCALE:	SHEET 1	OF 29 SHEETS	STA. 1556 TO STA. 1582

F.A.I. RTE.	SECTION	COUNTY	TOTAL SHEETS	SHEET NO.
70	(25-1,2)R	EFFINGHAM	424	37
CONTRACT NO. 74664				
ILLINOIS FED. AID PROJECT				

⚠ **SHEET REPLACED 10-26-17**

**SECTION A-A**



**SUGGESTED SEQUENCE OF OPERATIONS**

**PRE-STAGE 2**

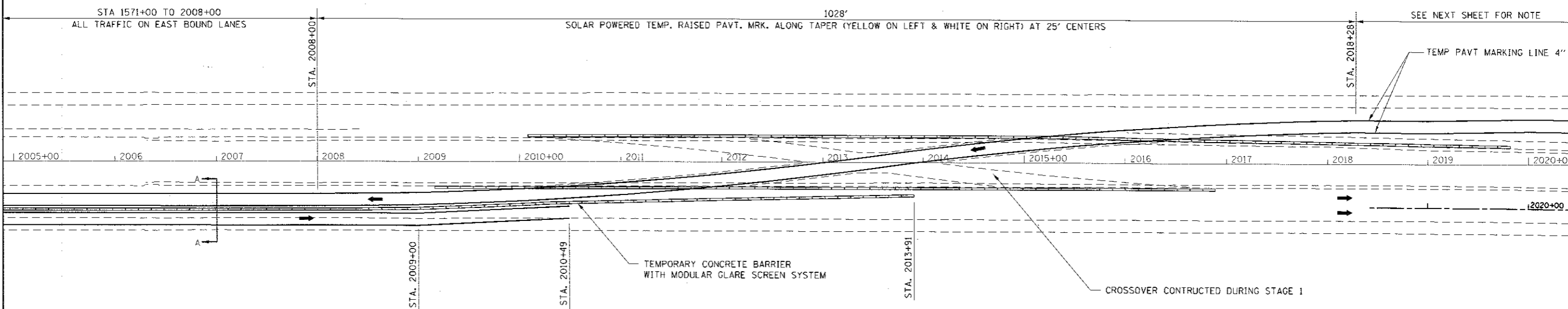
1. PATCH PAVEMENT IN EB LANES FOR STAGE 2 TRAFFIC.
2. CONSTRUCT 7' WIDE HMA BASE COURSE 12" IN THE EB DRIVING LANE SHOULDER.
3. REMOVE DELINEATORS.
4. CONSTRUCT RUMBLE STRIP 8" IN EB DRIVING LANE SHOULDER.
5. INSTALL TEMPORARY GUARDRAIL.
6. INSTALL TEMPORARY CONCRETE BARRIER WALL IN EB DRIVING LANE.
7. CONTINUE TREE REMOVAL, EMBANKMENT, AND CULVERT EXTENSION WORK.

**STAGE 2**

1. MOVE WB TRAFFIC TO EB PASSING LANE.
2. CONSTRUCT WB RUBBLIZATION AND HMA FULL-DEPTH PAVEMENT SECTIONS.
3. COMPLETE WB EMBANKMENT, CULVERT EXTENSIONS, GUARDRAIL, SEEDING, ETC.

BITUMINOUS MATERIALS (TACK COAT)							
STATION	TO	STATION	SIDE	LENGTH (FT)	WIDTH (FT)	AREA (SQ FT)	POUND
1556+00		1732+69	EB OUT	17669	7	123680.2	3092.0
1732+88		1785+99	EB OUT	5311	7	37173.2	929.3
1786+28		1927+46	EB OUT	14118	7	98827.1	2470.7
1927+72		1996+00	EB OUT	6828	7	47793.8	1194.8
<b>TOTAL</b>							<b>7687</b>

HOT-MIX ASPHALT BASE COURSE, 12"						
STATION	TO	STATION	SIDE	LENGTH (FT)	WIDTH (FT)	AREA (SQ YD)
1556+00.00		1732+68.60	EB OUT	17668.6	7	13742.2
1732+88.69		1785+99.15	EB OUT	5310.5	7	430.4
1786+28.38		1927+46.53	EB OUT	14118.2	7	10980.8
1927+72.31		1997+71.00	EB OUT	6998.7	7	5443.4
<b>TOTAL</b>						<b>34297</b>



PAVEMENT MARKING BLACKOUT TAPE - LINE 7"					
STATION	TO	STATION	DIRECTION	LENGTH (FT)	TAPE (FT)
2028+28		2038+28	WB	1000.0	275.0
<b>TOTAL</b>					<b>275</b>

TEMPORARY RAISED PAVEMENT MARKER						
STATION	TO	STATION	DIRECTION	LENGTH (FT)	EACH	DESCRIPTION
2008+00		2018+28	EB & WB	1028.0	82	BOTH EDGE LINES
2028+28		2038+28	WB	1000.0	40	ONE EDGE LINE
<b>TOTAL</b>					<b>122</b>	

PAVEMENT MARKING REMOVAL - WATER BLASTING						
STATION	TO	STATION	DIRECTION	LENGTH (FT)	TOTAL (SQ FT)	DESCRIPTION
1571+00		2010+49	EB	43949	20143	REMOVE ONE 4" EDGE LINE & 6" CENTERLINE
1571+00		2010+49	EB	43949	14650	1 LINE - REM TEMP PAVT MRKG NOT SHOWN ON STD
<b>TOTAL</b>					<b>34793</b>	

PAVEMENT MARKING BLACKOUT TAPE - LINE 5"				
STATION	TO	STATION	DIRECTION	LENGTH (FT)
2010+52		2012+00	EB	148.0
2015+75		2017+30	WB	155.0
<b>TOTAL</b>				<b>303</b>

FILLING EXISTING RUMBLE STRIP					
STATION	TO	STATION	DIRECTION	LENGTH (FT)	DESCRIPTION
2015+76		2017+31	WB	155.0	INSIDE SHLDR
<b>TOTAL</b>					<b>155</b>

TEMPORARY PAVEMENT MARKING - LINE 4"						
STATION	TO	STATION	DIRECTION	LENGTH (FT)	TOTAL (FT)	DESCRIPTION
1571+00		2010+49	EB	43949.0	43949.0	1 LINE (3 LINES INCLUDED IN HIGHWAY STANDARD 701416)
1571+00		2010+49	EB	43949.0	98885.25	2 EDGE LINES & CENTERLINE - AFTER STAGE 2 COMPLETE
<b>TOTAL</b>					<b>142834</b>	

SHORT TERM PAVEMENT MARKING REMOVAL							
STATION	TO	STATION	DIRECTION	LENGTH (FT)	WIDTH (FT)	AREA (SQ FT)	DESCRIPTION
2010+52		2012+00	WB	148.0	0.42	61.67	EDGE LINE
2015+75		2017+30	WB	155.0	0.42	64.58	EDGE LINE
2028+28		2038+28	WB	1000.0	0.58	160.42	CENTERLINE & SKIP-DASH
<b>TOTAL</b>						<b>287</b>	

NOTE: SEE STD. 701416 FOR DETAILS NOT SHOWN  
T = 43,680'

FILE NAME :	USER NAME : steffennk	DESIGNED -	REVISED -
PROJECT :	PROJECT :	CHECKED -	REVISED -
PLOT SCALE :	PLOT DATE :	DATE -	REVISED -

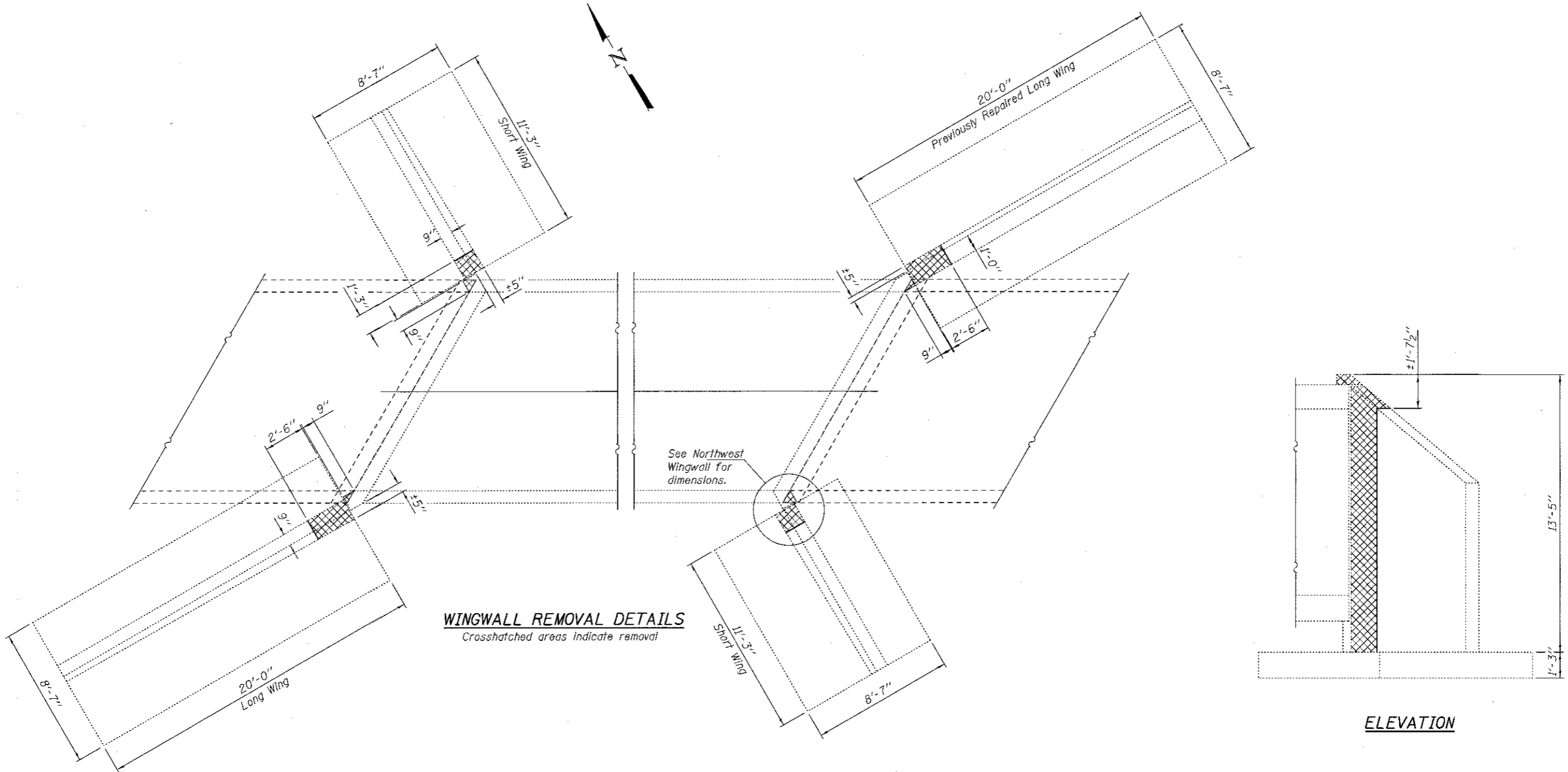
**STATE OF ILLINOIS  
DEPARTMENT OF TRANSPORTATION**

**STAGE 2 TRAFFIC CONTROL**

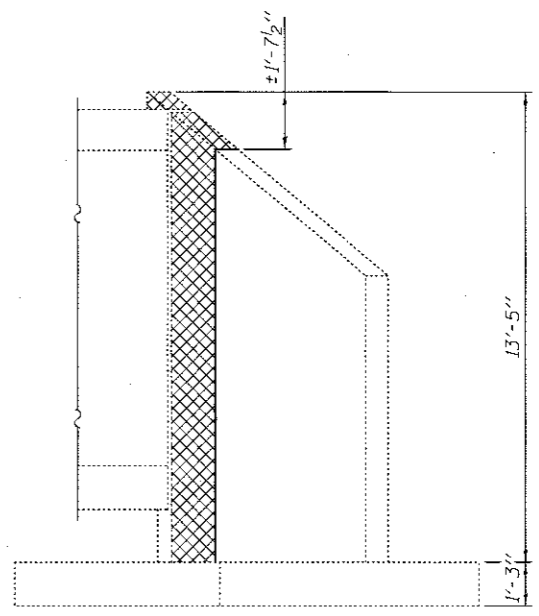
SCALE: SHEET 3 OF 10 SHEETS STA. TO STA.

F.A.I. RTE.	SECTION	COUNTY	TOTAL SHEETS	SHEET NO.
70	(25-1.2)R	EFFINGHAM	424	110
				CONTRACT NO. 74664
ILLINOIS FED. AID PROJECT				

**△ SHEET REPLACED 10-26-17**



**WINGWALL REMOVAL DETAILS**  
 Crosshatched areas indicate removal



**ELEVATION**

DESIGNED - SMR
CHECKED - JSB
DRAWN - Kyle M. Steffen
CHECKED - SMR JSB

PASSED  
*Carl King*  
 ENGINEER OF BRIDGES AND STRUCTURES

DATE - MAY 12, 2017
REVISED $\Delta$ 10/17/2017 VHV
REVISED

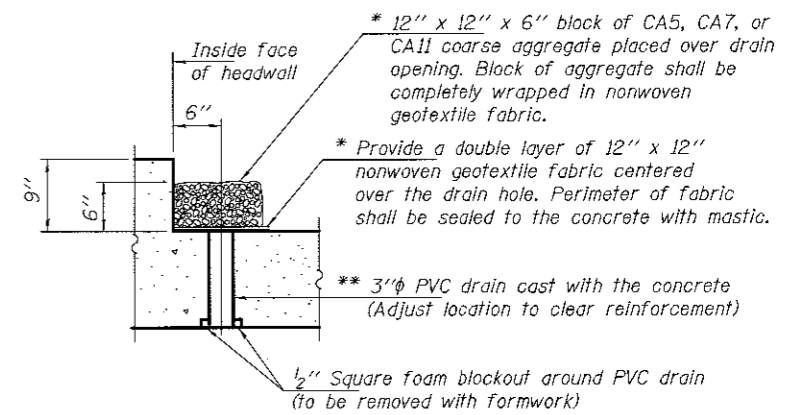
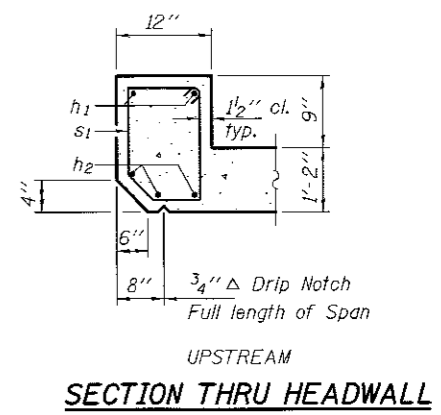
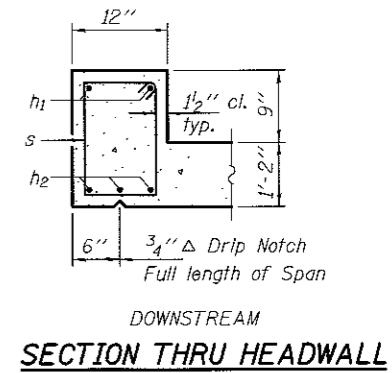
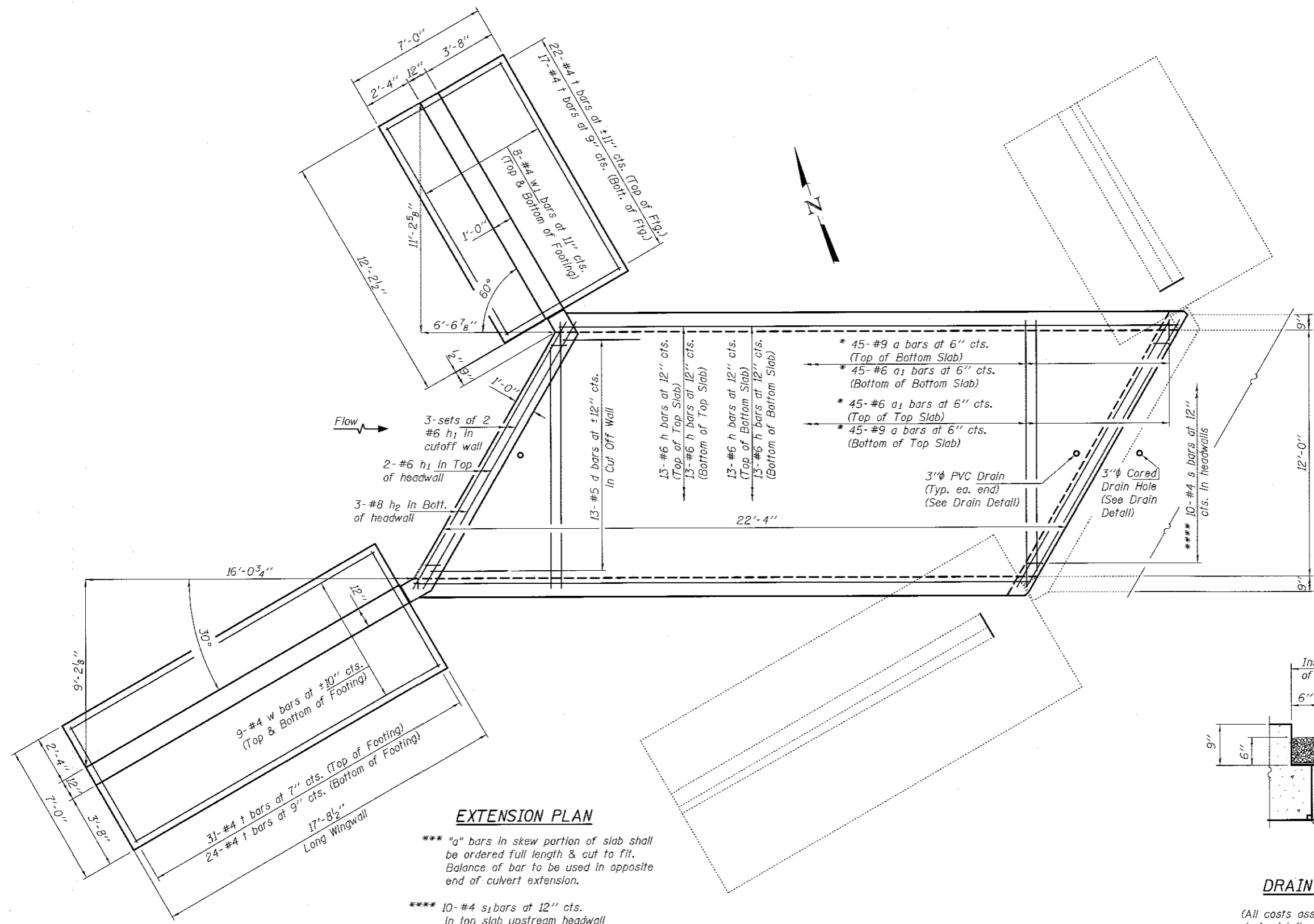
STATE OF ILLINOIS  
 DEPARTMENT OF TRANSPORTATION

WINGWALL REMOVAL DETAILS  
 SN 025-8689  
 SHEET NO. 2 OF 6 SHEETS

F.A.I. RTE.	SECTION	COUNTY	TOTAL SHEETS	SHEET NO.
70	125-1.2R	EFFINGHAM	424	186
CONTRACT NO. 74664				
ILLINOIS FED. AID PROJECT				

$\Delta$  SHEET REPLACED 10-26-17





**EXTENSION PLAN**

\*\*\* "a" bars in skew portion of slab shall be ordered full length & cut to fit. Balance of bar to be used in opposite end of culvert extension.

\*\*\*\* 10-#4 s<sub>1</sub> bars at 12" cts. in top slab upstream headwall

**DRAIN DETAIL**

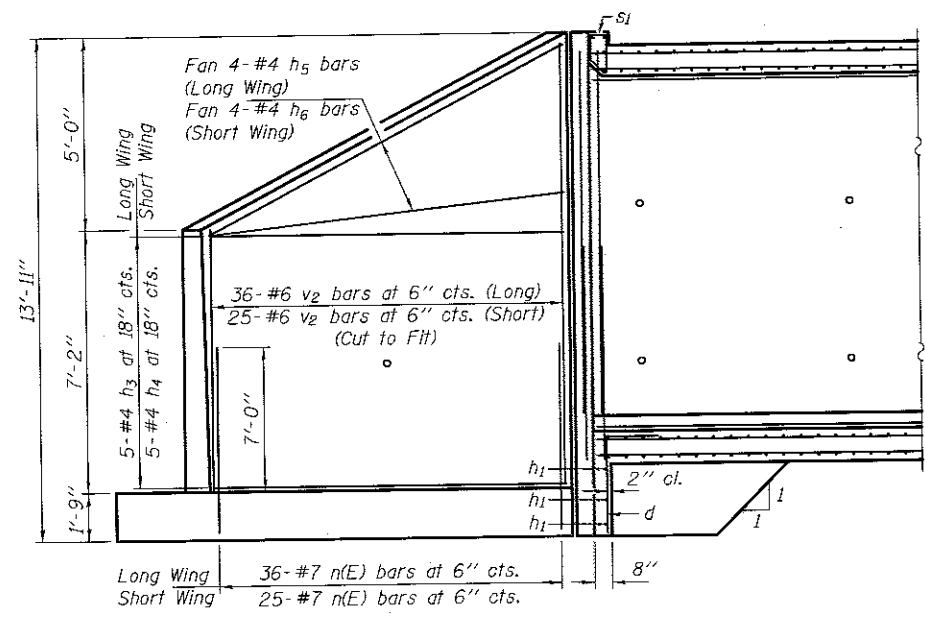
(All costs associated with furnishing and constructing the above drain detail will not be measured for payment but shall be included in the contract unit price for Concrete Box Culverts.)

\* Nonwoven geotextile fabric shall conform to the requirements of Article 1080.01 of the Standard Specifications. The minimum weight of the fabric shall be 6 ounces per square yard.

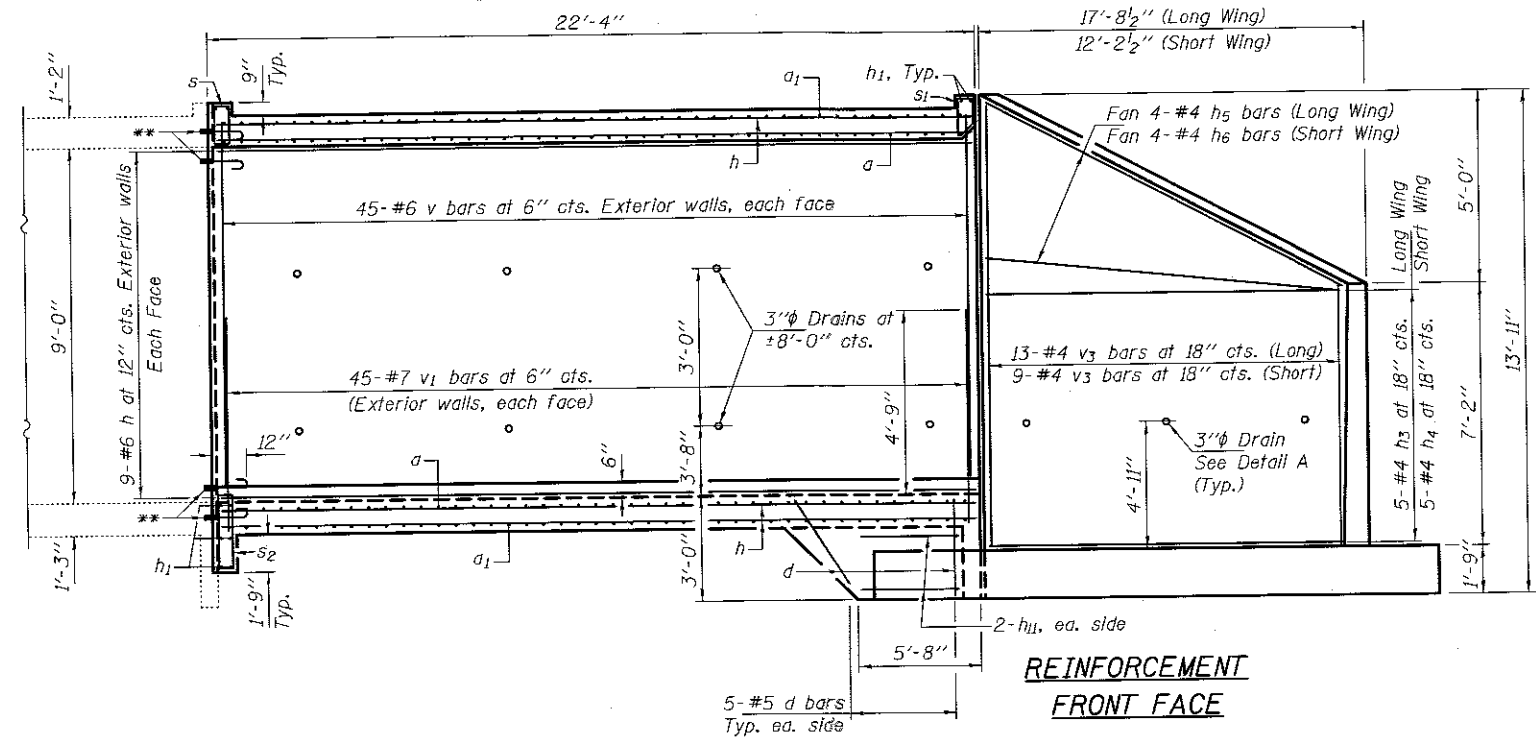
\*\* 3" Cored drain hole in existing culvert. Cost included with Concrete Box Culverts.

DESIGNED - SMR	DATE - MAY 12, 2017	STATE OF ILLINOIS DEPARTMENT OF TRANSPORTATION	NORTH END (UPSTREAM) CULVERT EXTENSION DETAILS		F.A.I. RTE.	SECTION	COUNTY	TOTAL SHEETS	SHEET NO.
CHECKED - JSB	REVISOR - 10/17/2017 VHV		SN 025-8689		TO	(25-1,2)R	EFFINGHAM	424	187
DRAWN - Kyle M. Steffen	REVISOR		SHEET NO. 3 OF 6 SHEETS		CONTRACT NO. 74664				
CHECKED - SMR JSB	ENGINEER OF BRIDGES AND STRUCTURES				ILLINOIS FED. AID PROJECT				

▲ SHEET REPLACED 10-26-17

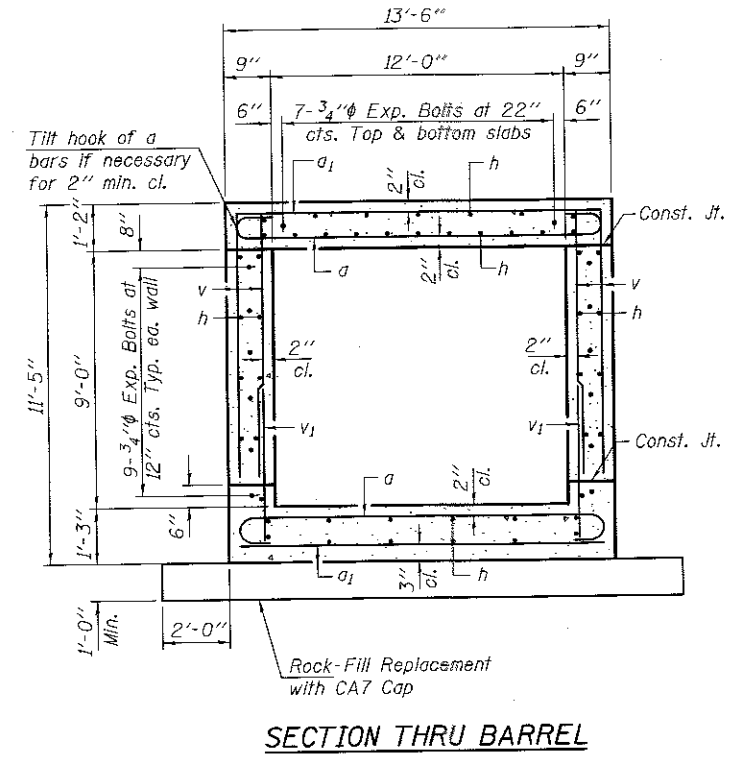


**REINFORCEMENT  
BACK FACE**

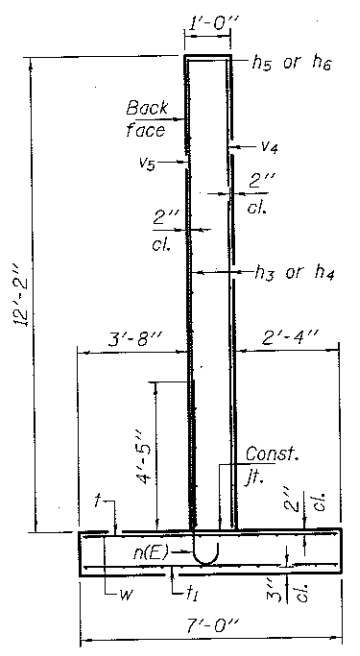


**REINFORCEMENT  
FRONT FACE**

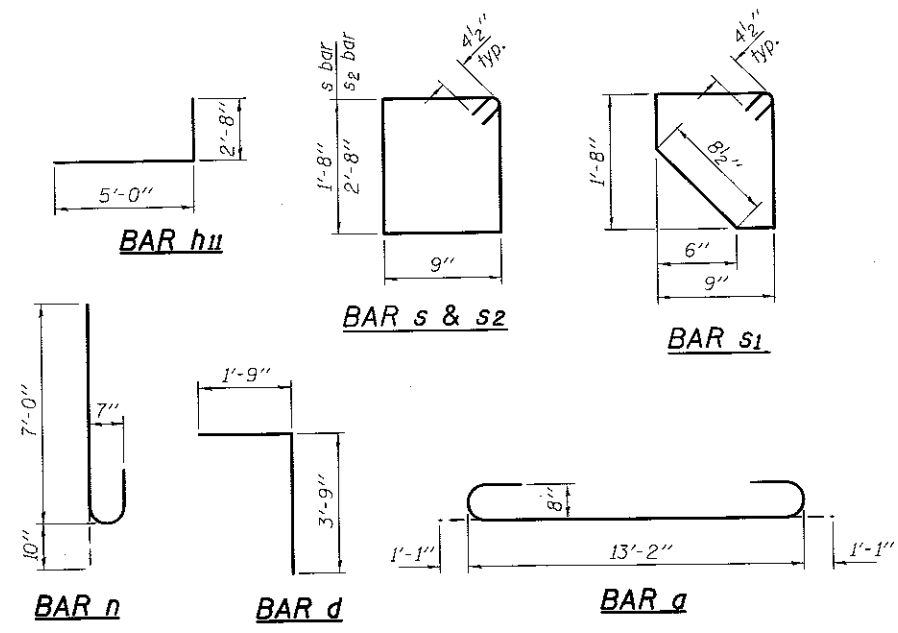
\*\* Expansion Bolts shall be 3/4"φ hooked bolts and extend a minimum of 9" into new concrete.



**SECTION THRU BARREL**



**SECTION THRU WINGWALL**



**BAR LAPS**  
#7 Bars = 4'-1"

**BILL OF MATERIAL**

Bar	No.	Size	Length	Shape
a	90	#9	15'-4"	U
a1	90	#6	13'-2"	U
d	23	#5	5'-6"	L
h	88	#6	22'-0"	—
h1	16	#6	13'-6"	—
h2	6	#8	13'-6"	—
h3	10	#4	17'-5"	—
h4	10	#4	11'-10"	—
h5	8	#4	18'-0"	—
h6	8	#4	13'-0"	—
hII	4	#6	7'-8"	L
n(E)	61	#7	7'-10"	U
s	10	#4	5'-7"	□
s1	10	#4	5'-4"	□
s2	10	#4	7'-7"	□
t	94	#4	6'-9"	—
v	180	#6	9'-3"	—
v1	90	#7	5'-10"	—
v2	61	#6	11'-10"	—
v3	22	#4	11'-10"	—
w	18	#4	17'-5"	—
w1	16	#4	11'-10"	—
Concrete Removal			Cu. Yd.	1.8
Concrete Box Culverts			Cu. Yd.	64.2
Expansion Bolts 3/4"			Each	32
Reinforcement Bars			Lbs.	16,180
Reinforcement Bars, Epoxy Coated			Lbs.	980

DESIGNED - SMR  
CHECKED - JSB  
DRAWN - Kyle M. Steffen  
CHECKED - SMR JSB

PASSED  
*Cal Perry*  
ENGINEER OF BRIDGES AND STRUCTURES

DATE - MAY 12, 2017  
REVISED 10/17/2017 VHV  
REVISED

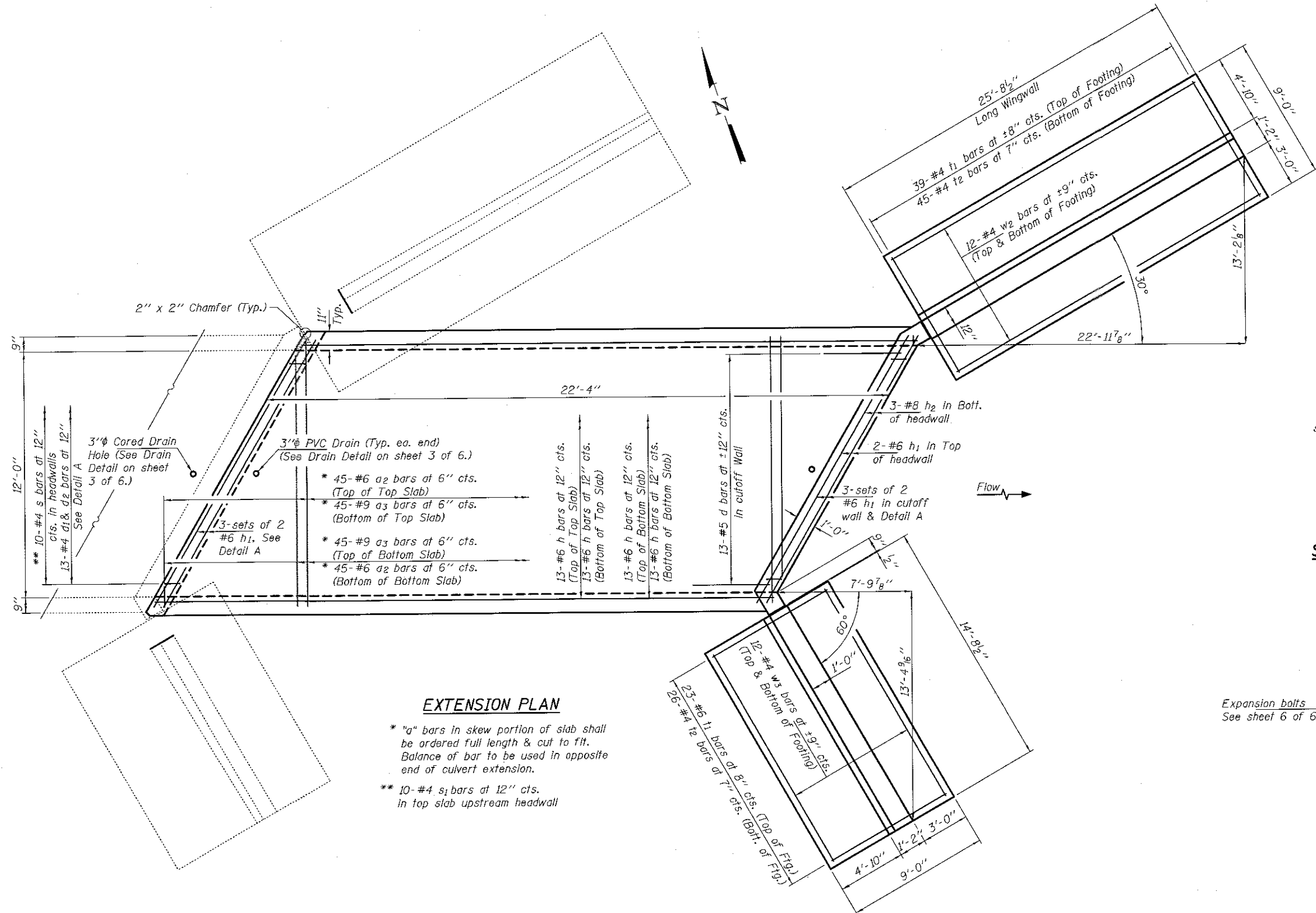
STATE OF ILLINOIS  
DEPARTMENT OF TRANSPORTATION

NORTH END (UPSTREAM) REPAIR DETAILS  
SN 025-8689  
SHEET NO. 4 OF 6 SHEETS

F.A.I. RTE.	SECTION	COUNTY	TOTAL SHEETS	SHEET NO.
70	(25-),2)R	EFFINGHAM	424	188

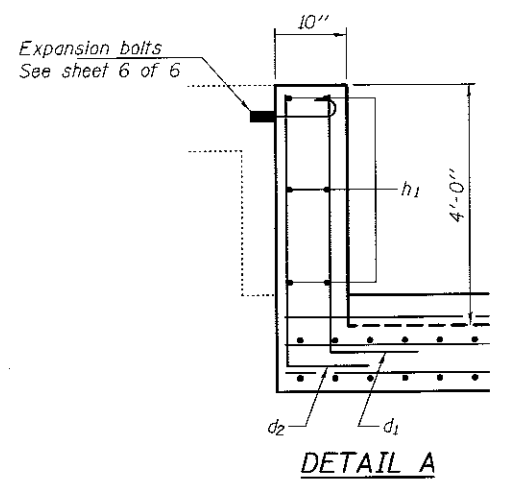
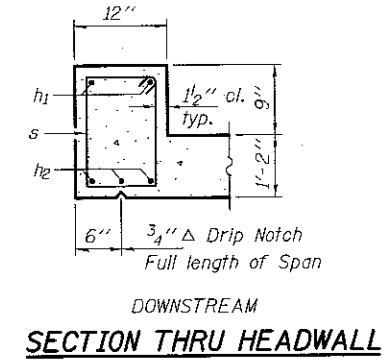
CONTRACT NO. 74664  
ILLINOIS FED. AID PROJECT

**▲ SHEET REPLACED 10-26-17**



**EXTENSION PLAN**

- \* "a" bars in skew portion of slab shall be ordered full length & cut to fit. Balance of bar to be used in opposite end of culvert extension.
- \*\* 10-#4 s1 bars at 12" cts. in top slab upstream headwall



DESIGNED - SMR	CHECKED - JSB	DRAWN - Kyle M. Steffen	CHECKED - SMR JSB
----------------	---------------	-------------------------	-------------------

PASSED

*Kyle M. Steffen*  
ENGINEER OF BRIDGES AND STRUCTURES

DATE - MAY 12, 2017	REVISED Δ 10/17/2017 VHV
	REVISED

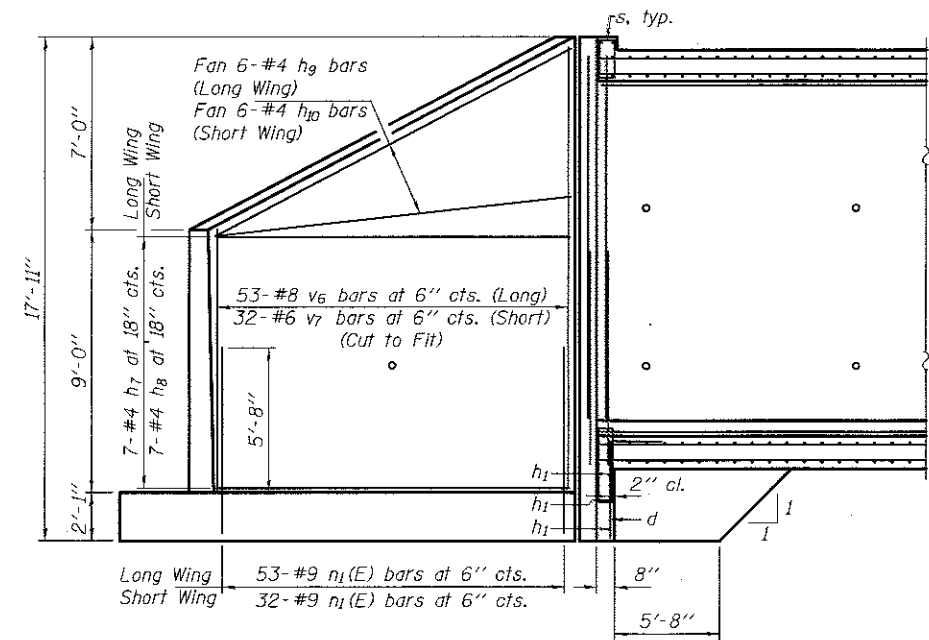
STATE OF ILLINOIS  
DEPARTMENT OF TRANSPORTATION

SOUTH END (DOWNSTREAM) CULVERT EXTENSION DETAILS  
SN 025-8689

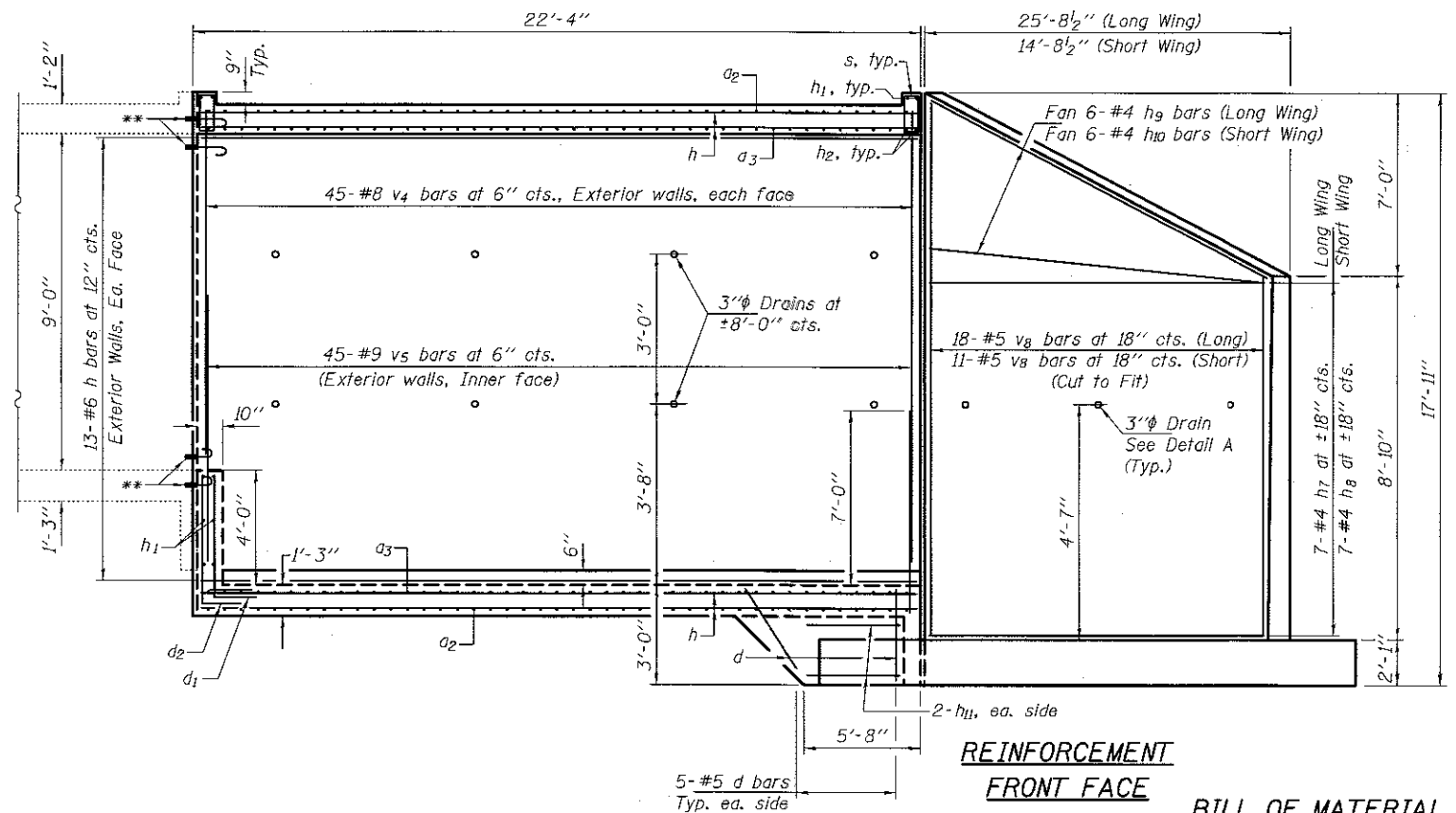
SHEET NO. 5 OF 6 SHEETS

F.A.I. RTE.	SECTION	COUNTY	TOTAL SHEETS	SHEET NO.
70	(25-1,2)R	EFFINGHAM	424	189
CONTRACT NO. 74664			ILLINOIS FED. AID PROJECT	

⚠ SHEET REPLACED 10-26-17



**REINFORCEMENT  
BACK FACE**

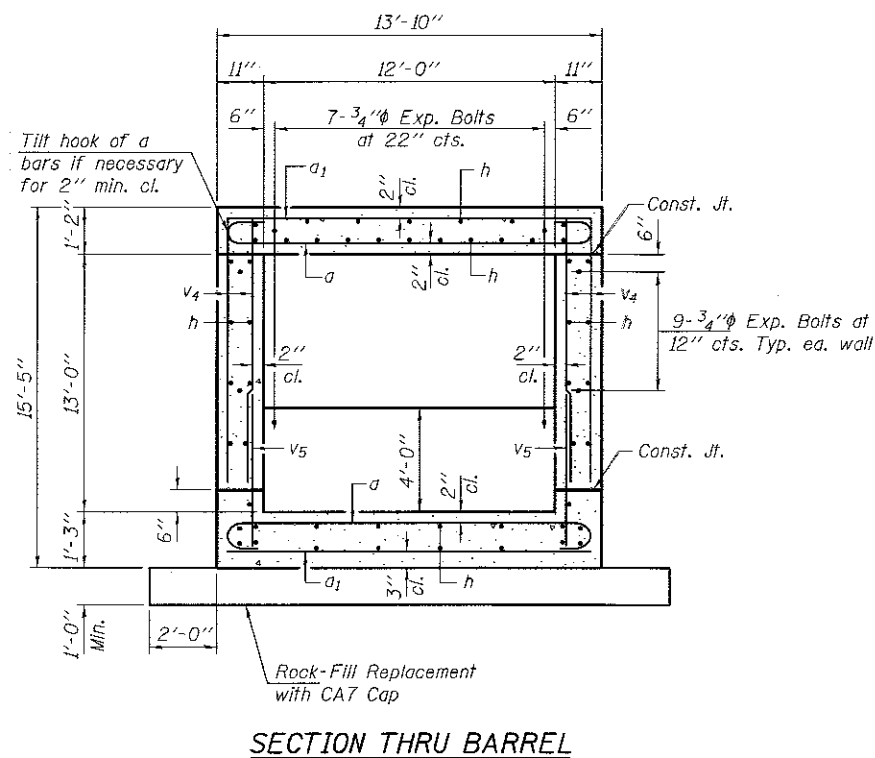


**REINFORCEMENT  
FRONT FACE**

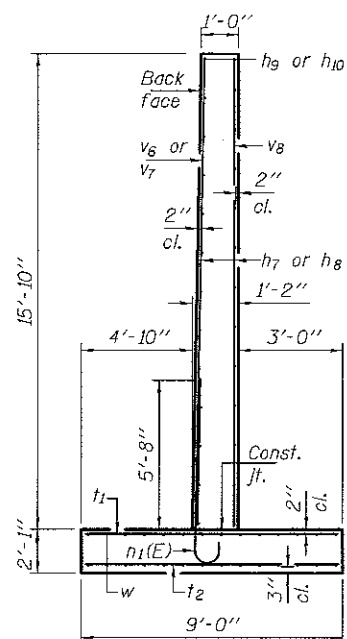
\*\* Expansion Bolts shall be 3/4"φ hooked bolts and extend a minimum of 9" into new concrete.

**BILL OF MATERIAL**

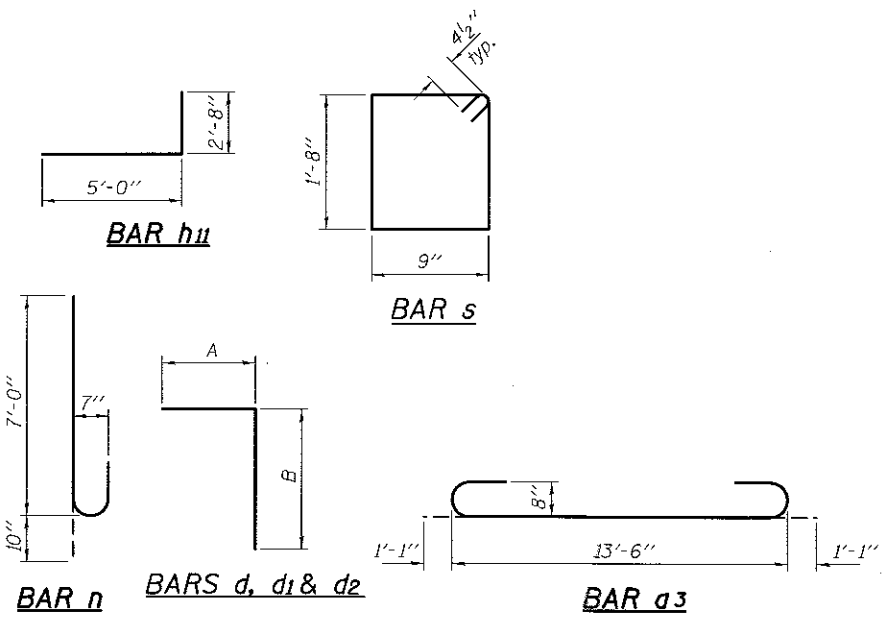
Bar	No.	Size	Length	Shape
a	90	#9	15'-4"	U
a1	90	#6	13'-2"	—
d	36	#4	5'-6"	L
d1	13	#4	5'-9"	L
d2	13	#4	6'-0"	L
h	104	#6	22'-0"	—
h1	16	#6	13'-6"	—
h2	6	#8	13'-6"	—
h7	14	#4	26'-6"	—
h8	14	#4	14'-4"	—
h9	12	#4	26'-5"	—
h10	12	#4	16'-2"	—
h11	4	#6	7'-8"	L
n1(E)	75	#9	8'-9"	U
s	20	#4	5'-7"	□
t1	62	#6	8'-9"	—
t2	71	#4	8'-9"	—
v4	180	#8	13'-0"	—
v5	90	#9	7'-5"	—
v6	53	#8	15'-6"	—
v7	32	#6	15'-6"	—
v8	29	#5	15'-6"	—
w2	24	#4	25'-4"	—
w3	24	#4	14'-4"	—
Concrete Removal			Cu. Yd.	1.8
Concrete Box Culverts			Cu. Yd.	100.0
Expansion Bolts 3/4"			Each	32
Reinforcement Bars			Lbs.	25250
Reinforcement Bars, Epoxy Coated			Lbs.	2230



**SECTION THRU BARREL**



**SECTION THRU WINGWALL**



**A & B DIMENSIONS**

Bar	A	B
d	1'-9"	3'-9"
d1	1'-9"	4'-0"
d2	1'-9"	4'-3"

**BAR LAPS**  
#9 Bars = 6'-4"

DESIGNED - SMR  
CHECKED - JSB  
DRAWN - Kyle M. Steffen  
CHECKED - SMR JSB

DATE - MAY 12, 2017  
PASSED *Carl P. ...*  
ENGINEER OF BRIDGES AND STRUCTURES

REVISOR - 10/17/2017 VHV  
REVISED

STATE OF ILLINOIS  
DEPARTMENT OF TRANSPORTATION

SOUTH END (DOWNSTREAM) REPAIR DETAILS  
SN 025-8689

SHEET NO. 6 OF 6 SHEETS

F.A.J. RTE. 70 SECTION (25-1,2)R COUNTY EFFINGHAM TOTAL SHEETS 424 SHEET NO. 190 CONTRACT NO. 74664

▲ SHEET REPLACED 10-26-17