

STATE OF ILLINOIS  
DEPARTMENT OF TRANSPORTATION

VAR. RTE.	SECTION	COUNTY	TOTAL SHEETS	SHEET NO.
VAR.	2017-0171	VARIOUS	21	1
		ILLINOIS	CONTRACT NO. 62F36	

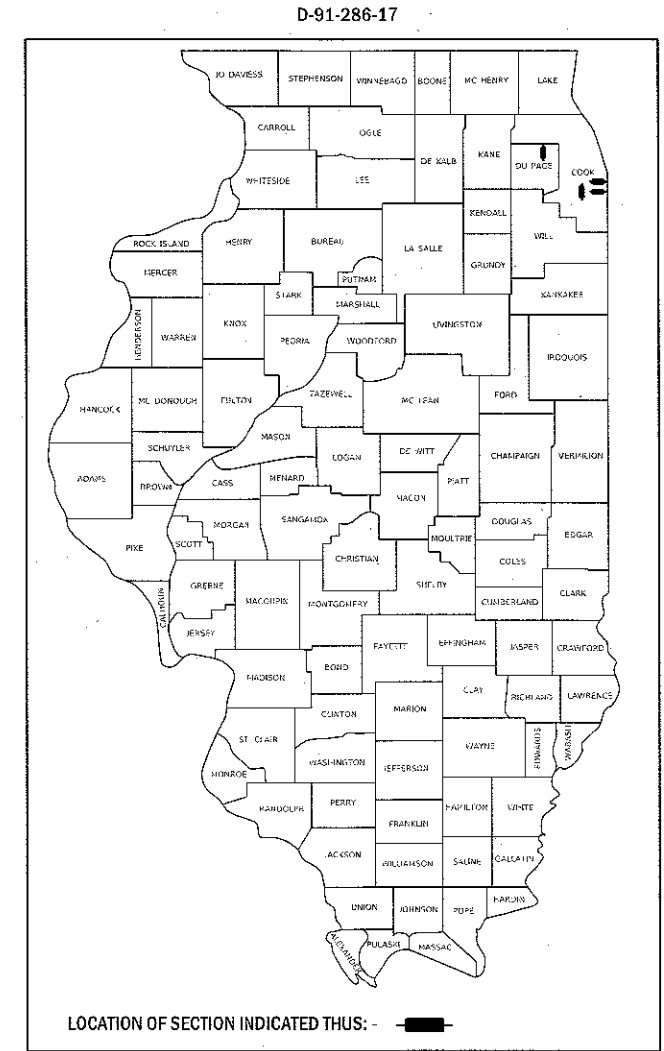
FOR INDEX OF SHEETS, SEE SHEET NO. 2

IMPROVEMENT IS LOCATED IN THE VILLAGE OF  
BENSENVILLE AND THE CITY OF CHICAGO

# PROPOSED HIGHWAY PLANS

VARIOUS ROUTES  
VARIOUS LOCATIONS  
SECTION: 2017-0171  
SLOPEWALL REPAIRS  
COOK & DUPAGE COUNTY

C-91-286-17



SEE LOCATIONS MAPS  
SHEET 4

J.U.L.I.E.  
JOINT UTILITY LOCATION INFORMATION FOR EXCAVATION  
1-800-892-0123  
OR 811

C.U.A.N.  
CHICAGO UTILITY ALERT NETWORK  
1-312-744-7000

PROJECT ENGINEER: J. ALAIN MIDY (847) 221-3056  
PROJECT MANAGER: ISSAM RAYYAN (847) 705-4178

CONTRACT NO. 62F36

STATE OF ILLINOIS  
DEPARTMENT OF TRANSPORTATION

SUBMITTED August 15 2017

*Anthony J. Quigley / 993*  
REGIONAL ENGINEER

*Oct 13 2017*  
*Maureen M. Addis, PE*  
ENGINEER OF DESIGN AND ENVIRONMENT

*Oct 13 2017*  
*David J. [Signature]*  
DIRECTOR OF PROGRAM DEVELOPMENT

PRINTED BY THE AUTHORITY  
OF THE STATE OF ILLINOIS

## INDEX OF SHEETS

1. TITLE SHEET
2. INDEX OF SHEETS, STATE STANDARDS AND GENERAL NOTES
3. SUMMARY OF QUANTITIES
4. LOCATION MAPS
- 5-7 EXISTING BRIDGE PLANS (SN 022-0142)
- 8-9. EXISTING BRIDGE PLANS (SN 016-0761)
- 10-12. EXISTING BRIDGE PLANS (SN 016-1145)
- 13-16. EXISTING BRIDGE PLANS (SN 016-1159)
17. ENTRANCE AND EXIT RAMP CLOSURE DETAILS (TC-08)
18. TRAFFIC CONTROL AND PROTECTION FOR SIDE ROADS, INTERSECTIONS, AND DRIVEWAYS (TC-10)
19. TRAFFIC CONTROL AND PROTECTION AT TURN BAYS (TO REMAIN) OPEN TO TRAFFIC (TC-14)
20. TRAFFIC CONTROL FOR SHOULDER CLOSURES AND PARTIAL RAMP CLOSURES (TC-17)
21. ARTERIAL ROAD INFORMATION SIGN (TC-22)

## STATE STANDARDS

### STANDARD NO. DESCRIPTION

701101-05	OFF-ROAD OPERATIONS, MULTILANE, 15' TO 24" FROM PAVEMENT EDGE
701106-02	OFF-ROAD OPERATIONS, MULTILANE, MORE THAN 15' AWAY
701400-09	APPROACH TO LANE CLOSURE, FREEWAY/EXPRESSWAY
701401-10	LANE CLOSURE, FREEWAY/EXPRESSWAY
701411-09	LANE CLOSURE, MULTI-LANE, TRAFFIC CONTROL AT ENTRANCE OR EXIT RAMP, FOR SPEEDS >=45 MPH
701426-09	LANE CLOSURE, MULTILANE, INTERMITTENT OR MOVING OPERATIONS, FOR SPEEDS >= 45MPH
701427-05	LANE CLOSURE, MULTILANE, INTERMITTENT OR MOVING OPERATIONS, FOR SPEEDS <= 40MPH
701428-01	TRAFFIC CONTROL SETUP AND REMOVAL FREEWAY/EXPRESSWAY
701601-09	URBAN LANE CLOSURE, MULTILANE, 1W OR 2W WITH NONTRAVERSABLE MEDIAN
701602-08	URBAN LANE CLOSURE, MULTILANE, 2W WITH BI-DIRECTIONAL LEFT TURN LANE
701801-06	SIDEWALK, CORNER OR CROSSWALK CLOSURE
701901-06	TRAFFIC CONTROL DEVICES

## GENERAL NOTES

BEFORE STARTING ANY EXCAVATION, THE CONTRACTOR SHALL CALL "J.U.L.I.E." AT (800) 892-0123 OR 811 FOR FIELD LOCATIONS OF BURIED ELECTRIC, TELEPHONE AND GAS UTILITIES. 48 HOUR NOTIFICATION IS REQUIRED.

BEFORE STARTING ANY EXCAVATION, THE CONTRACTOR SHALL CALL "C.U.A.N." AT (312) 744-7000 FOR FIELD LOCATIONS OF BURIED ELECTRIC, TELEPHONE AND GAS UTILITIES. 48 HOUR NOTIFICATION IS REQUIRED.

THE CONTRACTOR SHALL COORDINATE CONSTRUCTION ACTIVITIES WITH UTILITY COMPANIES, VILLAGE OF BENSENVILLE AND THE CITY OF CHICAGO.

PLAN DIMENSIONS AND DETAILS RELATIVE TO EXISTING PLANS ARE SUBJECT TO NOMINAL CONSTRUCTION VARIATIONS. THE CONTRACTOR SHALL FIELD VERIFY EXISTING DIMENSIONS AND DETAILS AFFECTING NEW CONSTRUCTION AND MAKE NECESSARY APPROVED ADJUSTMENTS PRIOR TO CONSTRUCTION OR ORDERING OF MATERIALS. SUCH VARIATIONS SHALL NOT BE CAUSE FOR ADDITIONAL COMPENSATION FOR A CHANGE IN SCOPE OF THE WORK, HOWEVER, THE CONTRACTOR WILL BE PAID FOR THE QUANTITY ACTUALLY FURNISHED BASED AT THE UNIT PRICE BID FOR THE WORK.

THE CONTRACTOR WILL NOT BE ALLOWED TO SET UP A YARD OR FIELD OFFICE ON STATE PROPERTY WITHOUT WRITTEN PERMISSION FROM THE DEPARTMENT.

THE CONTRACTOR SHALL CONTACT THE DISTRICT ONE TRAFFIC CONTROL SUPERVISOR AT (847) 705-4151 FOR EXPRESSWAYS AND (847) 705-4470 FOR ARTERIALS A MINIMUM OF 72 HOURS IN ADVANCE OF BEGINNING WORK.

THE CONTRACTOR SHALL BE REQUIRED TO PROVIDE ACCESS TO ABUTTING PROPERTY AT ALL TIMES DURING THE CONSTRUCTION OF THIS PROJECT.

WHEN ARTIFICIAL LIGHTING IS UTILIZED IN NIGHTTIME OPERATIONS, THE CONTRACTOR SHALL EXERCISE THE UTMOST PRECAUTIONS PREVENTING ADVERSE VISIBILITY TO THE MOTORING PUBLIC AND ADJACENT RESIDENTIAL AREAS.

THE ARTERIAL ROAD INFORMATION SIGN (TC-22) IS APPLICABLE ONLY TO ARTERIAL ROADS AND SHALL NOT BE APPLIED TO EXPRESSWAYS.

AT LOCATION 2: THE CONTRACTOR SHALL NOT BE ALLOWED TO CROSS ANY RAILROAD TRACKS UNDER THE BRIDGE.

THE CONTRACTOR SHALL TAKE NECESSARY PRECAUTIONS WHEN WORKING NEAR THE ABUTMENTS DUE TO ELECTRICAL JUNCTIONS BOXES AND ATTACHED CONDUITS.

THESE PLANS HAVE BEEN PREPARED FROM NOTES RECEIVED FROM THE BUREAU OF MAINTENANCE BRIDGE INSPECTORS.

DO NOT SCALE PLANS FOR CONSTRUCTION DIMENSIONS.

FILE NAME =	USER NAME = dia21a	DESIGNED -	REVISED -	<b>STATE OF ILLINOIS DEPARTMENT OF TRANSPORTATION</b>	<b>INDEX OF SHEETS, STATE STANDARDS, GENERAL NOTES AND GENERAL PAINT NOTES</b>	VAR. RTE.	SECTION	COUNTY	TOTAL SHEETS	SHEET NO.	
Default	PLOT SCALE = 1/8" = 100.0000' / in.	CHECKED -	REVISED -			VAR.	2017-0171	VAR.	21	2	
	PLOT DATE = 8/24/2017	DATE -	REVISED -			CONTRACT NO. 62F36					
						SCALE:	SHEET 1	OF 1	SHEETS	STA.	TO STA.

URBAN

100% STATE

SUMMARY OF QUANTITIES				CONSTRUCTION TYPE CODE				
CODE NO	ITEM	UNIT	TOTAL QUANTITIES	DUPAGE	COOK			
				0013 022-0142	0013 016-0761	0013 016-1145	0013 016-1159	
20700220	POROUS GRANULAR EMBANKMENT	CU YD	46	4	19		23	
50104650	SLOPE WALL REMOVAL	SO YD	348	250	63		35	
50300300	PROTECTIVE COAT	SO YD	348	250	63		35	
51100100	SLOPE WALL 4 INCH	SO YD	348	250	63		35	
67000400	ENGINEER'S FIELD OFFICE, TYPE A	CAL MO	3	0.75	0.75	0.75	0.75	
67100100	MOBILIZATION	LSUM	1	0.25	0.25	0.25	0.25	
70102630	TRAFFIC CONTROL AND PROTECTION, STANDARD 701601	LSUM	1	0.5	0.5			
70102632	TRAFFIC CONTROL AND PROTECTION, STANDARD 701602	LSUM	1	1				
70102640	TRAFFIC CONTROL AND PROTECTION, STANDARD 701801	LSUM	1	0.5	0.5			
70200100	NIGHTTIME WORK ZONE LIGHTING	LSUM	1			0.5	0.5	
X0323491	SLOPE WALL CRACK SEALING	FOOT	702	30	30	350	292	
X7011015	TRAFFIC CONTROL AND PROTECTION (EXPRESSWAYS)	LSUM	1			0.5	0.5	
Z0030850	TEMPORARY INFORMATION SIGNING	SO FT	102.8	51.4	51.4			

SUMMARY OF QUANTITIES				CONSTRUCTION TYPE CODE				
CODE NO	ITEM	UNIT	TOTAL QUANTITIES	DUPAGE	COOK			
				0014 022-0142	0014 016-0761	0014 016-1145	0014 016-1159	
Z0048665	RAILROAD PROTECTIVE LIABILITY INSURANCE	LSUM	1		1			
Z0064800	SELECTIVE CLEARING	UNIT	1	0.5	0.5			

FILE NAME =	USER NAME = dfa2la	DESIGNED -	REVISED -
\\VLD04EBID\NT\EG\hinds.gpr\PI\DOT\Documents\DOT	Offices\Dist\rd\Projects\012867\CADD\rs\Des\gn\012867	DRAWN -	REVISED -
	PLOT SCALE = 1/8" = 1' / 1/4"	CHECKED -	REVISED -
	PLOT DATE = 8/24/2017	DATE -	REVISED -

STATE OF ILLINOIS  
DEPARTMENT OF TRANSPORTATION

SUMMARY OF QUANTITIES

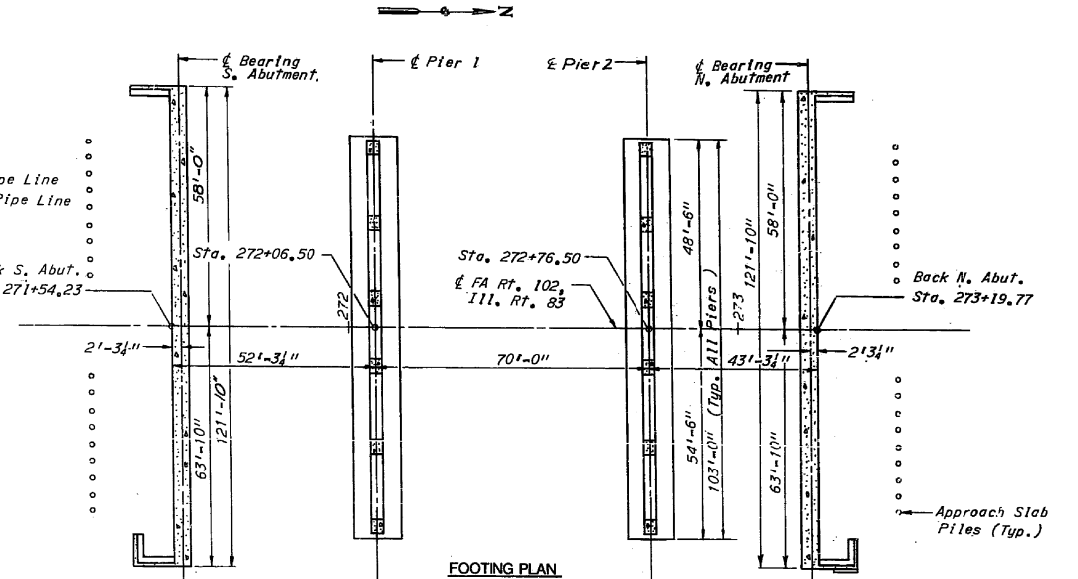
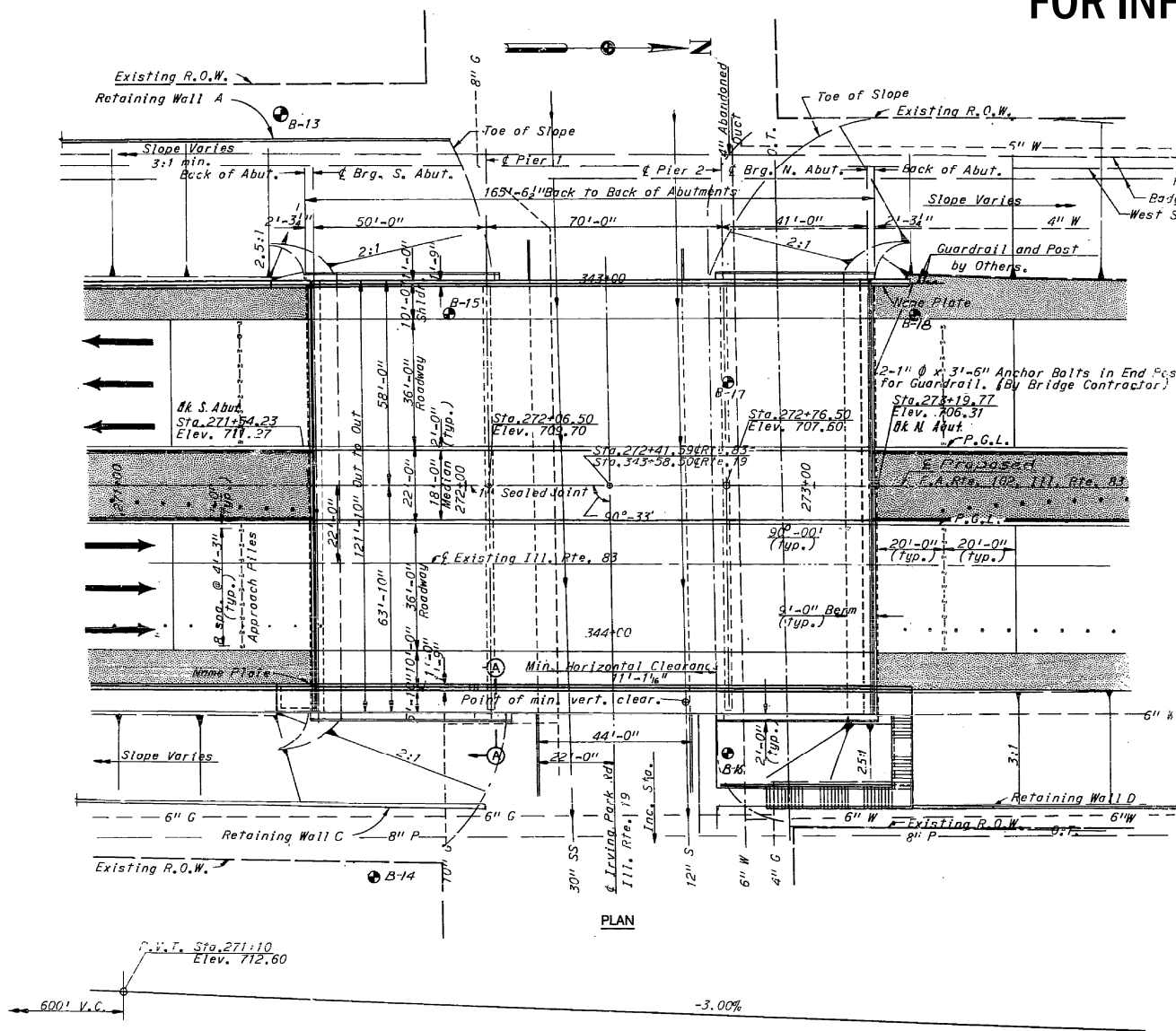
SCALE: SHEET NO. OF SHEETS STA. TO STA.

VAR. RTE.	SECTION	COUNTY	TOTAL SHEETS	SHEET NO.
VAR.	2017-0171	VARIOUS	21	3
CONTRACT NO. 62F36			FED. ROAD DIST. NO. 1 ILLINOIS FED. AID PROJECT	





### FOR INFORMATION ONLY



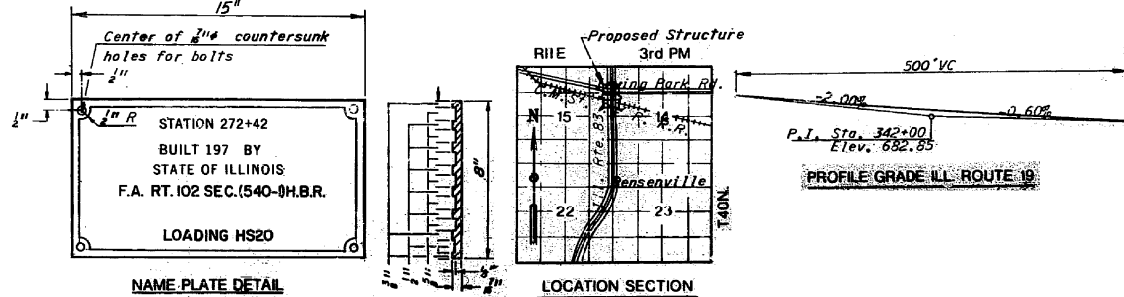
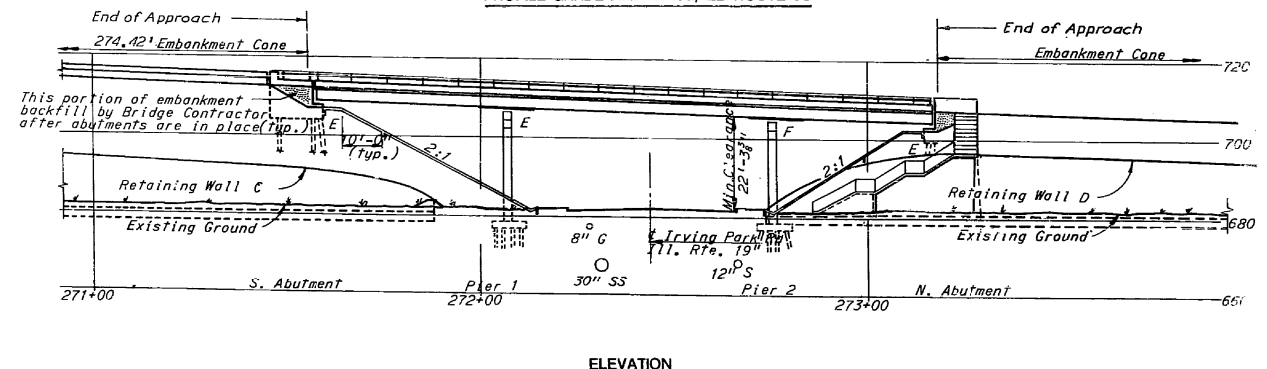
**LEGEND**  
Northern Illinois Gas 4" G  
Commonwealth Edison Electric 0" G  
Illinois Bell Telephone U.G. Tel. Cable  
Water 6" W  
Sanitary Sewer 12" S  
Storm Sewer 30" SS  
Right-of-Way

**Note:**  
All utilities, unless shown otherwise will be removed or relocated by others. The Contractor shall notify the owner of the utilities of his work schedule sufficiently in advance to allow time for disposition of utilities.

For existing topography and details of embankment cones, see roadway plans, Sheet 8. Approach slab piles at Sta. 271+34.23 and Sta. 273+39.77 shall be 18 creosoted timber piles. Pile length varies from 8 ft. for Northbound lanes to 22 ft. for Southbound lanes.

**Approach Pile Data**  
Type: 12" Creosoted Piles  
No. Required: 36 Piles  
Length: Varies from 10' to 20'  
See Special Provisions

PROFILE GRADE F.A. RT. 102, ILL. ROUTE 83

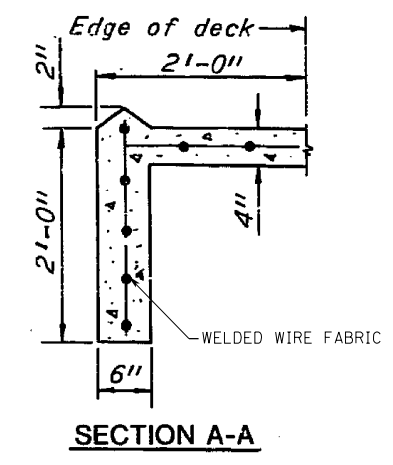
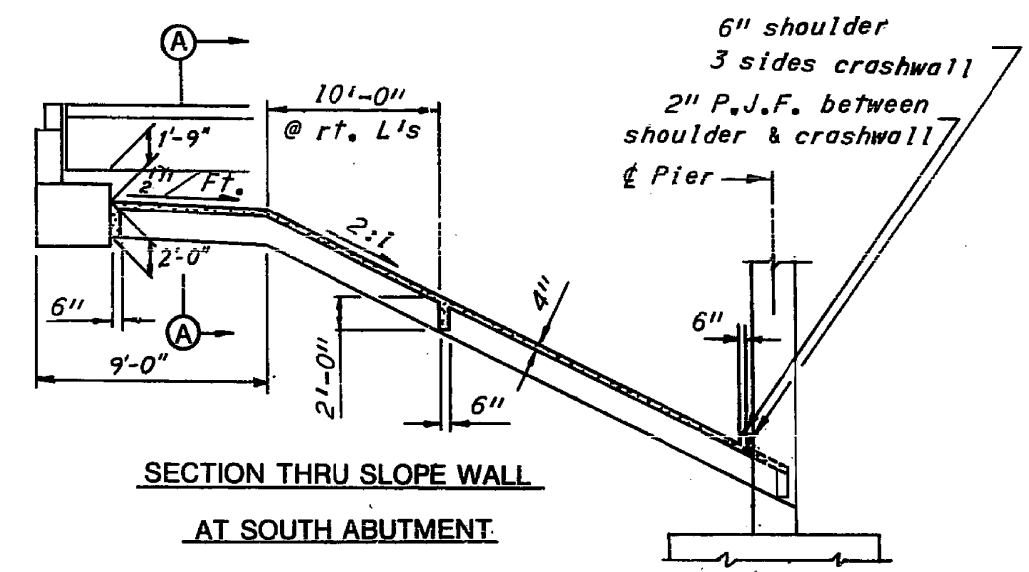
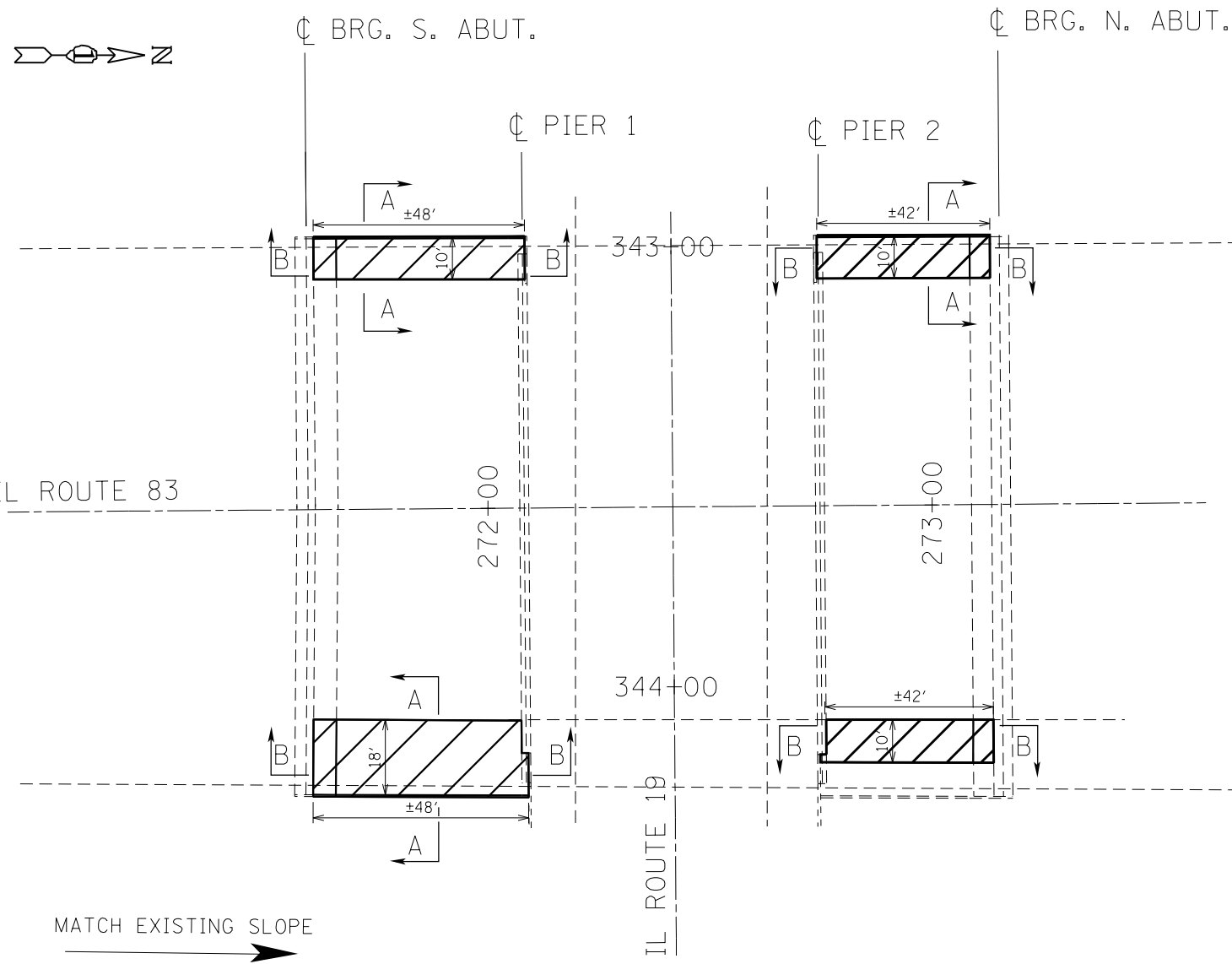


MODEL: Default  
FILE: \\nsdlc.pva\ULB&E\ID\NETC\Illinois\pva\RID\DOT\Documents\128617\CADD\data\Design\128617-dhr-ep-bar.dgn

USER NAME = diaza	DESIGNED -	REVISED -
DRAWN -	REVISED -	REVISED -
PLOT SCALE = 100,0000' / in.	CHECKED -	REVISED -
PLOT DATE = 8/24/2017	DATE -	REVISED -

#### STATE OF ILLINOIS DEPARTMENT OF TRANSPORTATION

SCALE: SHEET 1 OF 3 SHEETS STA.	LOC. 1) SN 022-0142 IL-83 OVER IL-19		VAR. RTE.	SECTION	COUNTY	TOTAL SHEETS	SHEET NO.
			VAR.	2017-0171	DUPAGE	21	5
			ILLINOIS			CONTRACT NO. 62F36	
					FED. AID PROJECT		



**LEGEND**

HATCHED AREAS INDICATE "SLOPE WALL REMOVAL", "SLOPEWALL 4 inch" and FILL WITH "POROUS GRANULAR EMBANKMENT"

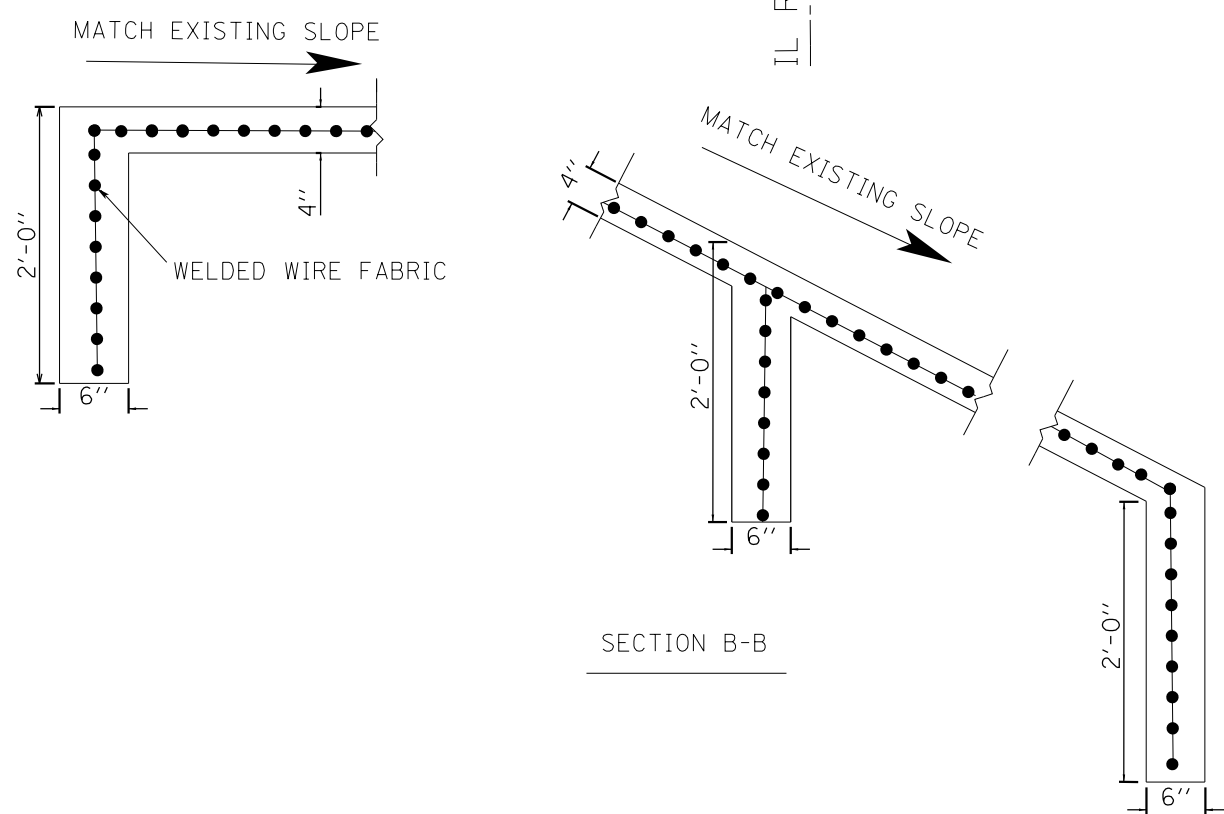
**BILL OF MATERIAL**

DESCRIPTION	UNIT	QUANTITY
POROUS GRANULAR EMBANKMENT	CU YD	4
PROTECTIVE COAT	SQ YD	250
SLOPE WALL REMOVAL	SQ YD	250
SLOPE WALL 4 INCH	SQ YD	250
SLOPE WALL CRACK SEALING	FOOT	30
SELECTIVE CLEARING	UNIT	0.5

**NOTES:**

SLOPEWALL GUTTER SHALL BE CLEANED OUT COST INCLUDED IN SLOPEWALL REMOVAL.

SLOPEWALL SHALL BE REINFORCED WITH WELDED WIRE FABRIC 6 in. x 6 in. W4.0xW4.0 WEIGHING 58 LBS PER 100 SQ.FT. COST OF THE MESH IS INCLUDED IN THE COST OF "SLOPEWALL 4 INCH".



MODEL: Default  
FILE: \\nas01\pub\B&E\BID\NTEC\Illinois\gov\PIWDOT\Documents\BID\Office\BID\ref\1\Projects\128617\CADD\B&E\Drawings\128617-shr-pln.dgn

USER NAME = diaza	DESIGNED -	REVISED -
PLOT SCALE = 100.0000' / in.	DRAWN -	REVISED -
PLOT DATE = 8/24/2017	CHECKED -	REVISED -
	DATE -	REVISED -

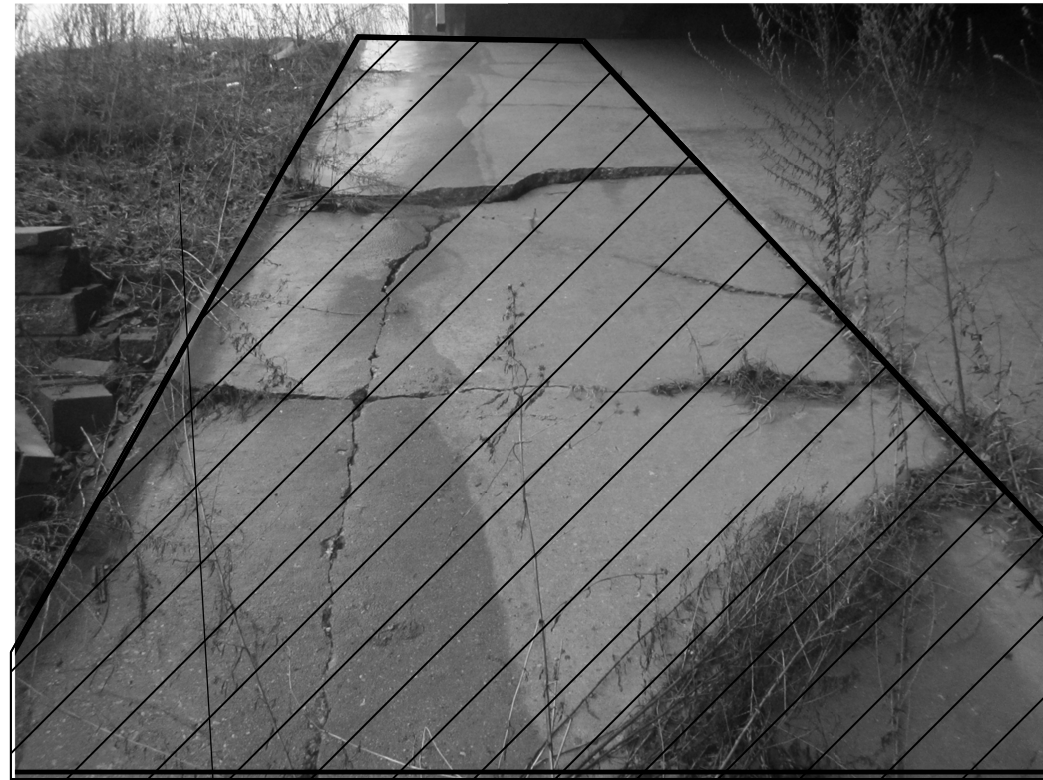
**STATE OF ILLINOIS  
DEPARTMENT OF TRANSPORTATION**

**LOC. 1) SN 022-0142  
IL-83 OVER IL-19**

SCALE: SHEET 2 OF 3 SHEETS STA. TO STA.

VAR. RTE.	SECTION	COUNTY	TOTAL SHEETS	SHEET NO.
	2017-0171		21	6
CONTRACT NO. 62F36			ILLINOIS FED. AID PROJECT	

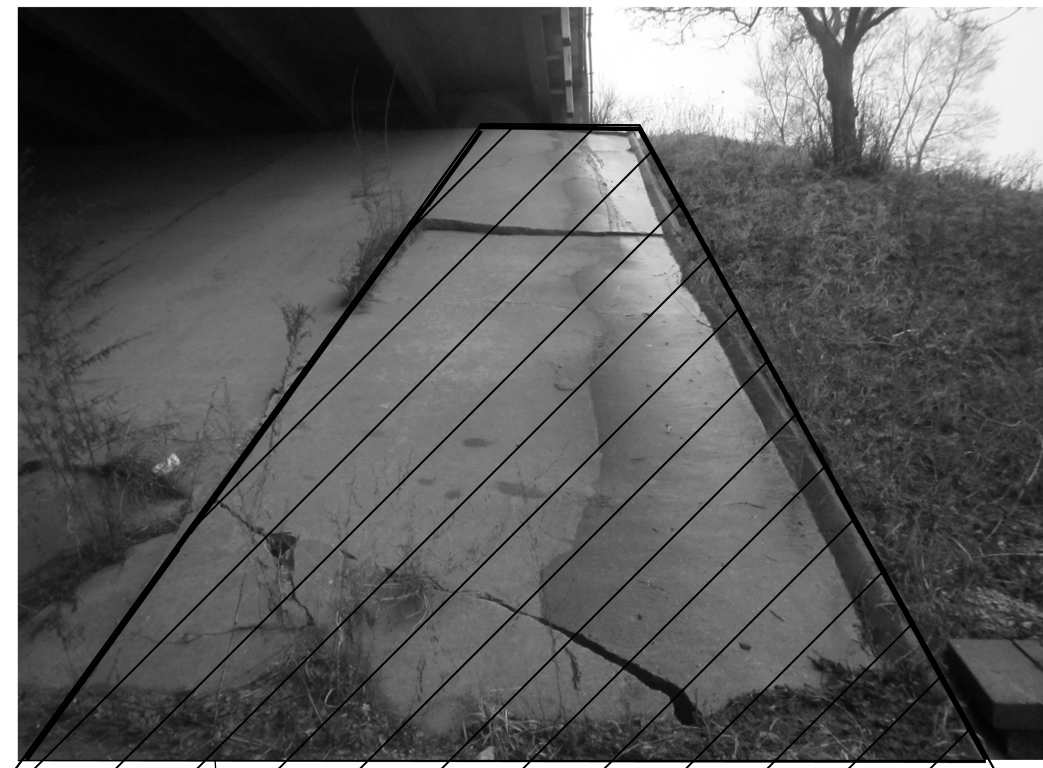
SLOPE WALL REPAIR AREA NORTHWEST



SLOPE WALL REPAIR AREA NORTHEAST



SLOPE WALL REPAIR AREA SOUTHWEST



SLOPE WALL REPAIR AREA SOUTHEAST



LEGEND



HATCHED AREAS INDICATE "SLOPE WALL REMOVAL",  
"SLOPEWALL 4 inch" and FILL WITH "POROUS  
GRANULAR EMBANKMENT"

MODEL: Default  
FILE: \\nas01.cba.illinois.gov\pww\DOT\Documents\DOT\_Offices\Director\Projects\128617\CADD\Drawings\128617-dhr-plan.dgn

USER NAME = diaza	DESIGNED -	REVISED -
	DRAWN -	REVISED -
PLOT SCALE = 100,0000' / in.	CHECKED -	REVISED -
PLOT DATE = 8/24/2017	DATE -	REVISED -

STATE OF ILLINOIS  
DEPARTMENT OF TRANSPORTATION

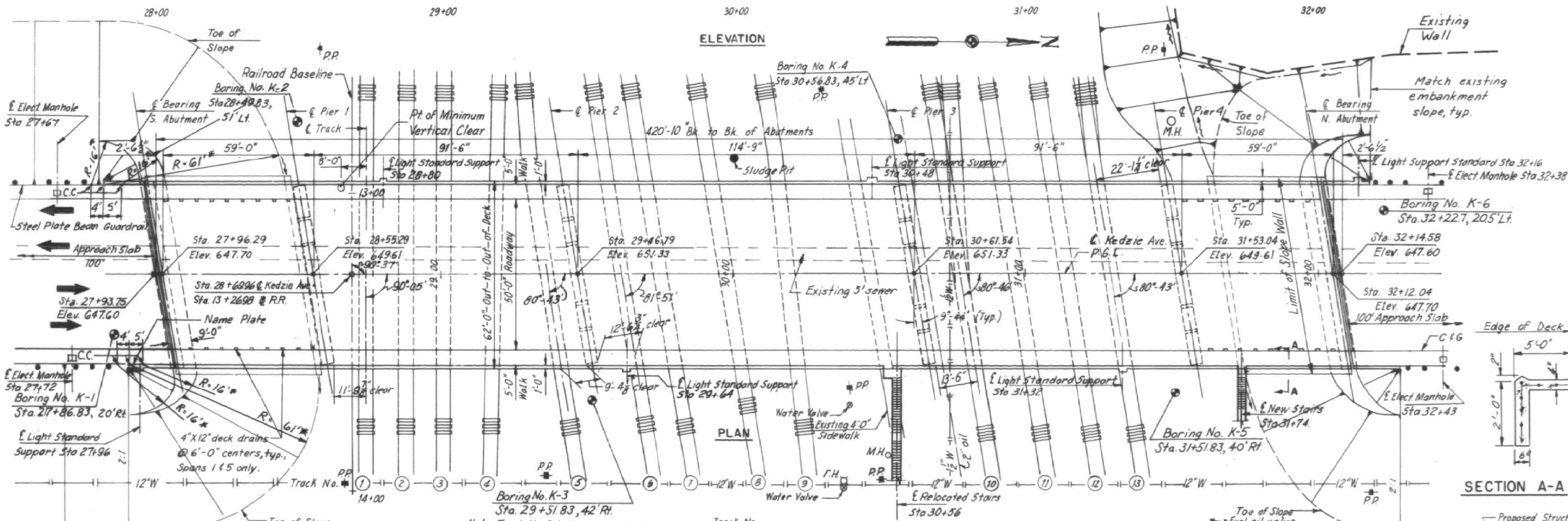
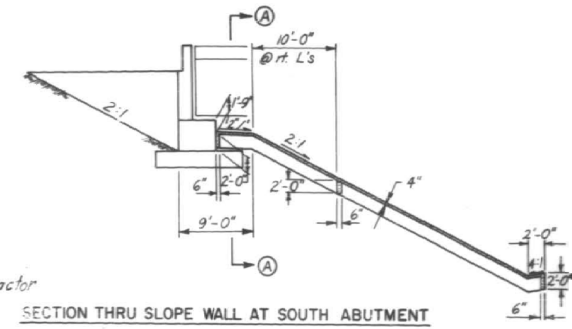
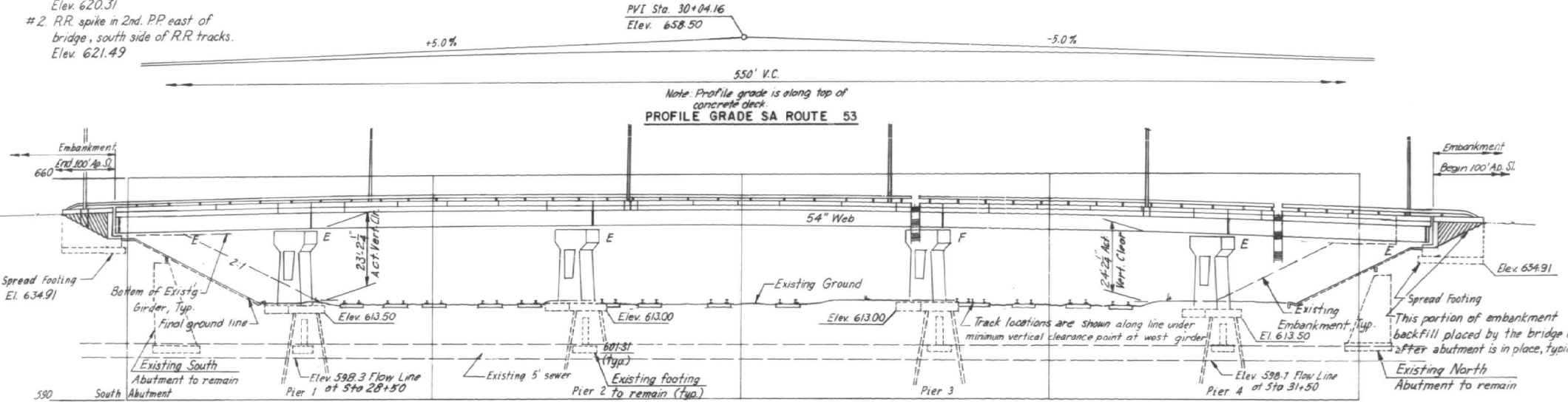
LOC. 1) SN 022-0142  
IL-83 OVER IL-19

SCALE: SHEET 3 OF 3 SHEETS STA. TO STA.

VAR. RTE.	SECTION	COUNTY	TOTAL SHEETS	SHEET NO.
	2017-017I	DUPAGE	21	7
			CONTRACT NO. 62F36	
ILLINOIS FED. AID PROJECT				

# FOR INFORMATION ONLY

B.M.'s # 1. R.R. spike in 1st. P.P. west of bridge, south side of R.R. tracks.  
 Elev. 620.31  
 # 2. R.R. spike in 2nd. P.P. east of bridge, south side of R.R. tracks.  
 Elev. 621.49



Note: Track No. 5 to be removed from service while Pier 2 is being constructed.

Track No.	621.27	621.15	620.65	620.54	620.06	619.16	618.98	618.57
7	620.80	620.58				619.49	618.82	618.57
8	620.80	620.58	620.84	620.58	620.28	619.41	618.91	618.57
9	620.80	620.63	620.70	620.07	619.78	619.67	619.22	
10	620.66	620.53	620.52	620.34	619.97	619.25	618.82	
11	620.46	620.29	619.81	619.12	618.70	620.12	619.74	
12	621.09	621.18	619.81	619.12	618.70	620.12	619.74	
13	620.80	620.58	619.36	618.87	618.50	619.82	618.84	

Track Stationing: 8+00, 9+00, 10+00, 11+00, 12+00, 13+00, 14+00, 15+00, 16+00, 17+00, 18+00, 19+00

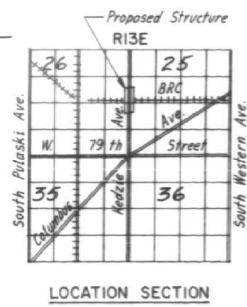
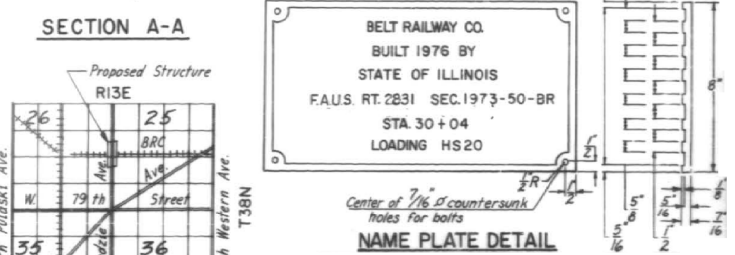
**Notes:**

- Elevations shown are referenced to USGS datum. Chicago City datum 0.00=USGS datum 579.48.
- Approach slab shall conform to Standard 2353
- Nameplate shall conform to Standard 2113.
- For Boring Logs see Sheets 25 and 26.

**Legend:**

- PP Power Pole
- MH Manhole
- FH Fire Hydrant
- W Water Main
- C.C. Center of Circle
- R. Radius

\* Radii shown for embankment are typical. Toe of slope radius @ northwest to be adjusted as required to match existing embankment and to provide positive drainage.



**TRACK ELEVATIONS-BELT RAILWAY YARDS AT 73 RD. ST.**  
 Note: Track stationing is along railroad baseline.  
 Track elevations are given to top of rail.

MODEL: Default  
 FILE: \public\BIBID\2831\projcs\d128617\CADData\Bibliod\28317.dwg

USER NAME	DESIGNED	REVISED
= diaza	-	-
DRAWN	-	-
CHECKED	-	-
DATE	-	-

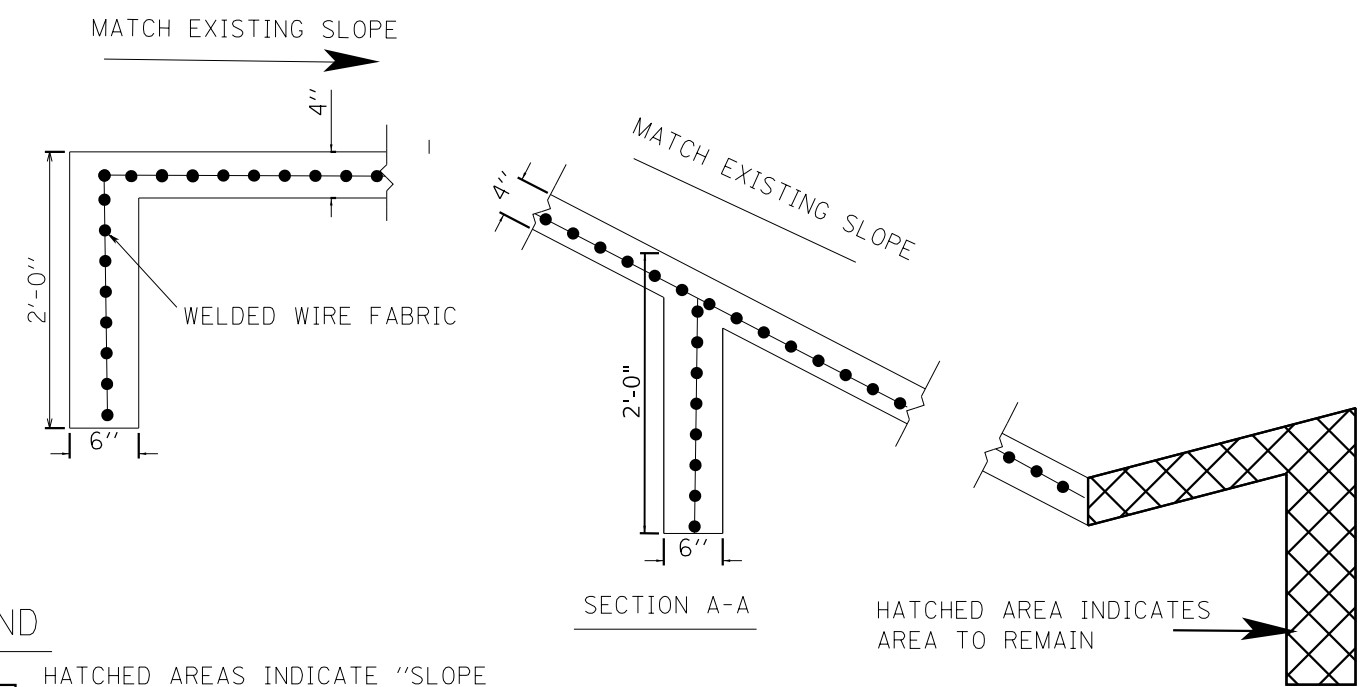
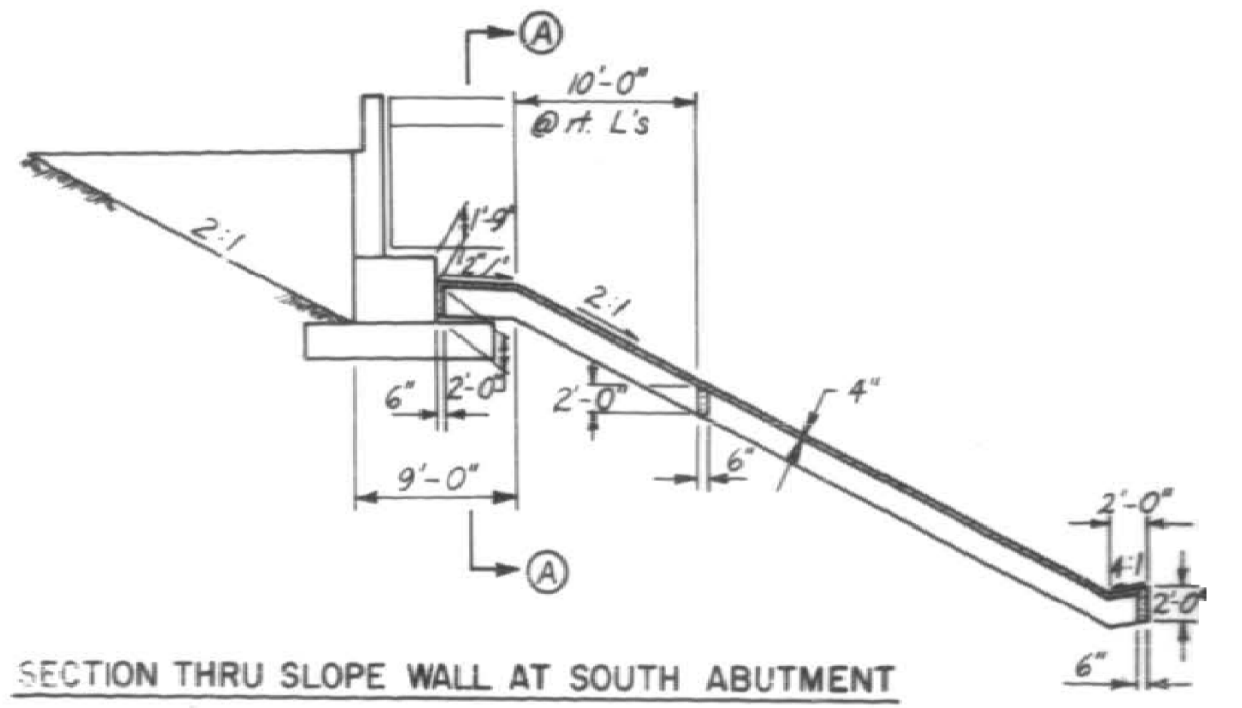
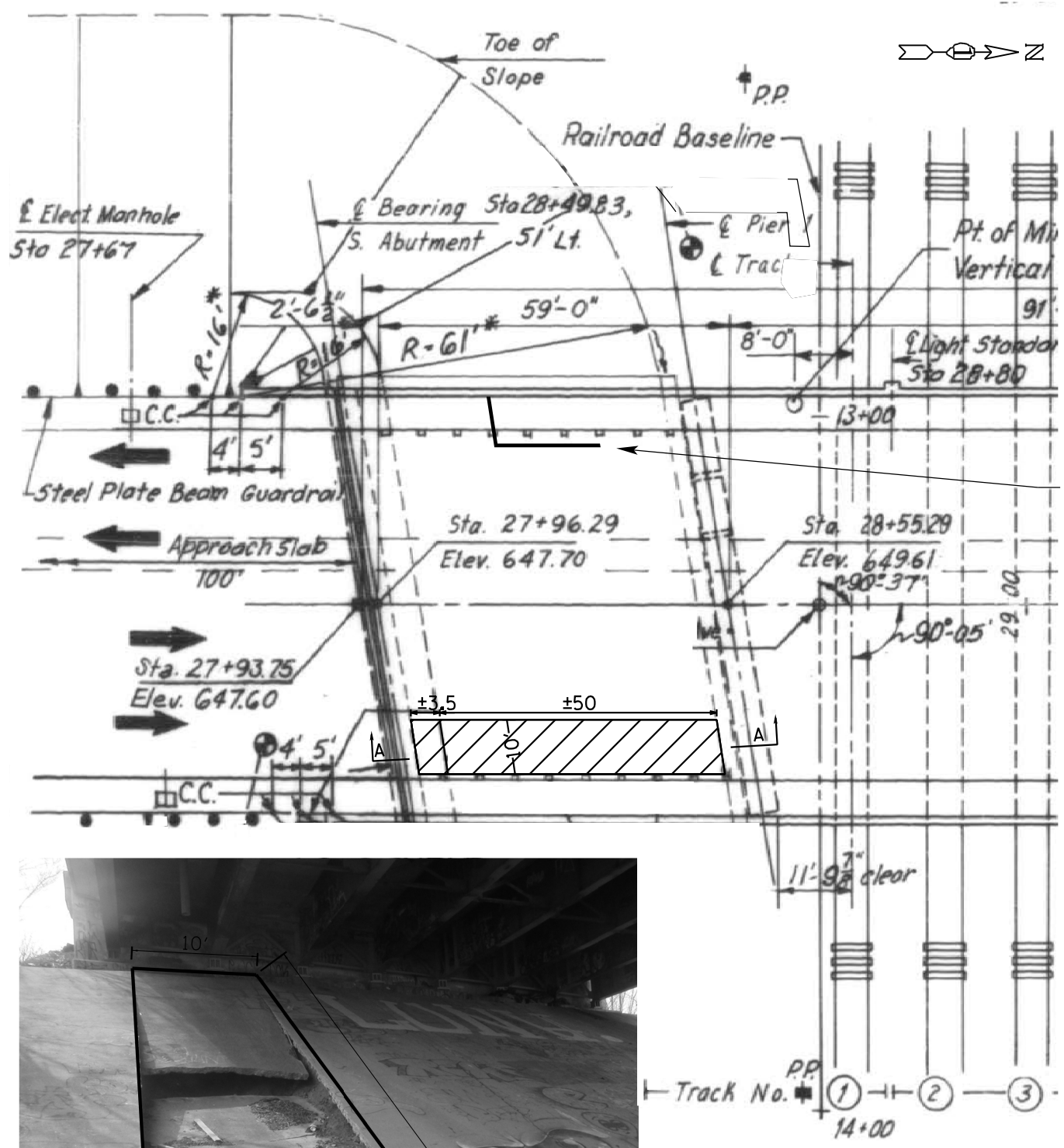
**STATE OF ILLINOIS**  
**DEPARTMENT OF TRANSPORTATION**

**LOC. 2) SN 016-0761**  
**KEDZIE AVE. OVER BRC RR**

SCALE: SHEET 1 OF 2 SHEETS STA. TO STA.

VAR. RTE.	SECTION	COUNTY	TOTAL SHEETS	SHEET NO.
	2017-0171	COOK	21	8
CONTRACT NO. 62F36				
ILLINOIS FED. AID PROJECT				





- LEGEND**
- HATCHED AREAS INDICATE "SLOPE WALL REMOVAL", "SLOPEWALL 4 INCH" and FILL WITH "POROUS GRANULAR EMBANKMENT"

**NOTES:**

SLOPEWALL GUTTER SHALL BE CLEANED OUT COST INCLUDED IN SLOPEWALL REMOVAL.

SLOPEWALL SHALL BE REINFORCED WITH WELDED WIRE FABRIC 6 in. x 6 in. W4.0xW4.0 WEIGHING 58 LBS PER 100 SQ.FT. COST OF THE MESH IS INCLUDED IN THE COST OF "SLOPEWALL 4 INCH".

**BILL OF MATERIAL**

DESCRIPTION	UNIT	QUANTITY
POROUS GRANULAR EMBANKMENT	CU YD	19
PROTECTIVE COAT	SO YD	63
SLOPE WALL REMOVAL	SO YD	63
SLOPE WALL 4 INCH	SO YD	63
SLOPE WALL CRACK SEALING	FOOT	30
SELECTIVE CLEARING	UNIT	0.5



SLOPE WALL REPAIR AREA

MODEL: Default  
FILE: \\hpc01\project\128617\CADD\Drawings\DOT Office\Drawings\1\PROJECTS\128617\CADD\Drawings\DOT Office\Drawings\1\PROJECTS\128617-CR-17-01-D138617-01-D138617.dwg

USER NAME = diaza	DESIGNED -	REVISED -
	DRAWN -	REVISED -
PLOT SCALE = 100.0000' / in.	CHECKED -	REVISED -
PLOT DATE = 8/24/2017	DATE -	REVISED -

**STATE OF ILLINOIS  
DEPARTMENT OF TRANSPORTATION**

**LOC. 2) SN 016-0761  
KEDZIE AVE. OVER BRC RR**

SCALE: SHEET 2 OF 2 SHEETS STA. TO STA.

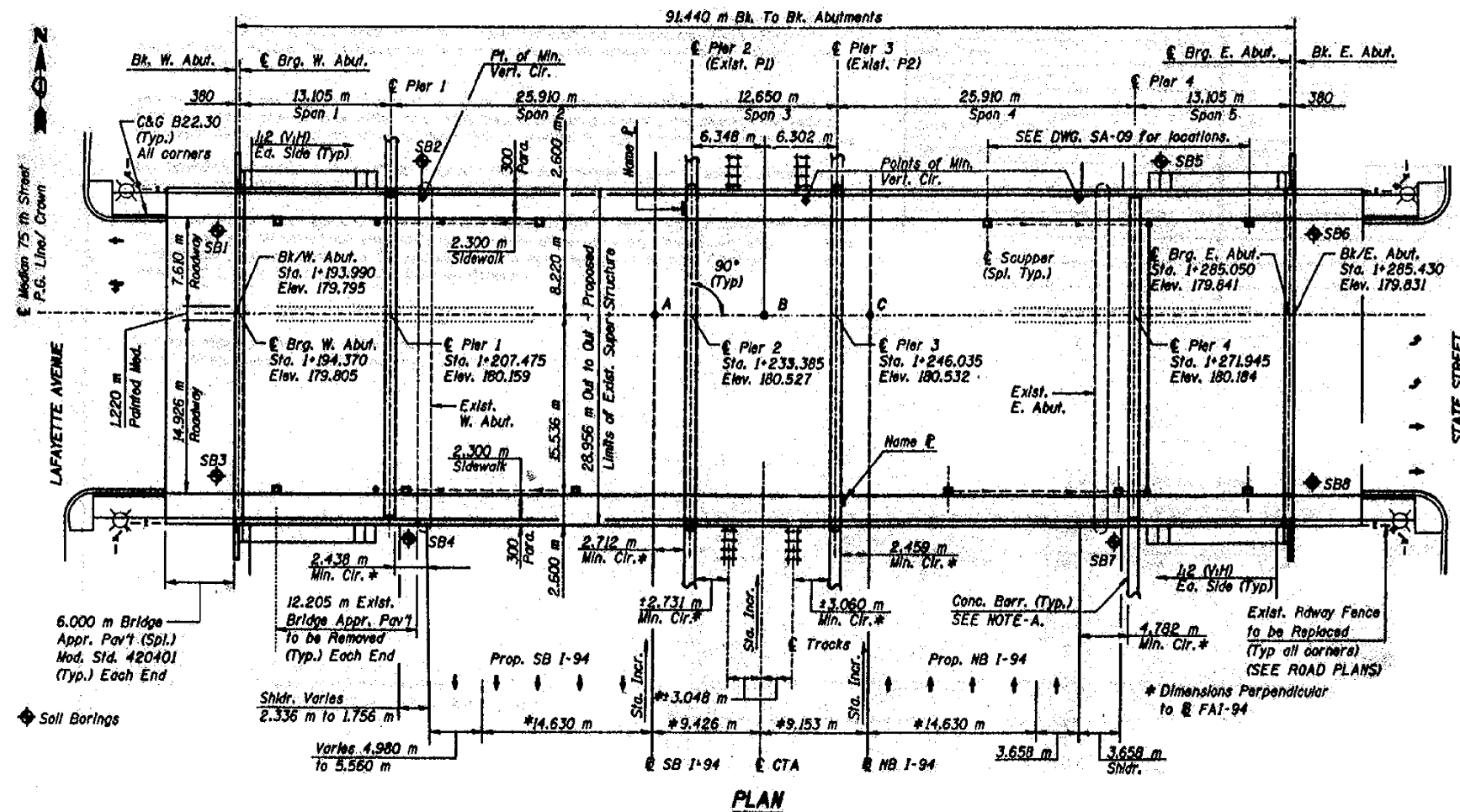
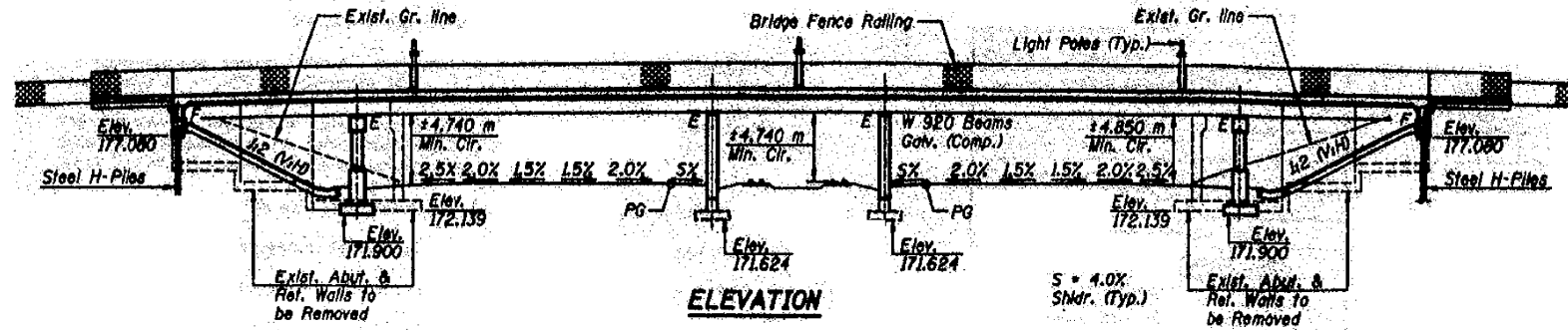
VAR. RTE.	SECTION	COUNTY	TOTAL SHEETS	SHEET NO.
	2017-0171	COOK	21	9
CONTRACT NO. 62F36				
ILLINOIS FED. AID PROJECT				

# FOR INFORMATION ONLY

**BM:** Set "X" on West bolt of fire hydrant at Southwest corner of East 75th Street and South Mohlgan Avenue. Elevation 179.491 m.

**Existing Structure:** SN 016-1145 Built over FAI Route 4, Section 066-1818.3-15D in 1958. Existing Structure is a 3-simple span (22.714 m x 12.650 m x 22.714 m) with SB, Bk. to Bk. Abut. The existing abutments are high closed abutments with counterfort wingwalls supported on spread footings. The existing piers are solid wall type supported on spread footings. The existing superstructure consists of a reinforced concrete deck, 178 mm thick and 28.956 m cut to out width, supported by 18-1219 mm simple span PPC I-Beams. The exist. deck, PPC I-Beams, both abutments, and all retaining walls are to be removed. The walls of exist. Piers 1 & 2 are to be removed ±900 mm above the exist. footings and reconstructed. No Salvage

**Construction Staging:** Not required. 75th Street will be closed during the reconstruction of the bridge.



**INTERSECTION POINTS - EQUATIONS**

- A** Sta. 1+230.306 75th Street  
Sta. 40+812.011 @ SB I-94
- B** Sta. 1+239.733 75th Street  
Sta. 5+065.075 @ CTA  
Stew 0°21'08"
- C** Sta. 1+248.885 75th Street  
Sta. 71+297.529 @ NB I-94

MODEL: Default  
 FILE: \\msc01\p\proj\0161145\loc3\0161145-loc3-1145-loc3-1145.dwg  
 PROJECT: 0161145-LOC 3) SN 016-1145  
 OFFICE: JEROME  
 DATE: 8/24/2017

USER NAME = diaza	DESIGNED -	REVISED -
	DRAWN -	REVISED -
PLOT SCALE = 100,0000' / in.	CHECKED -	REVISED -
PLOT DATE = 8/24/2017	DATE -	REVISED -

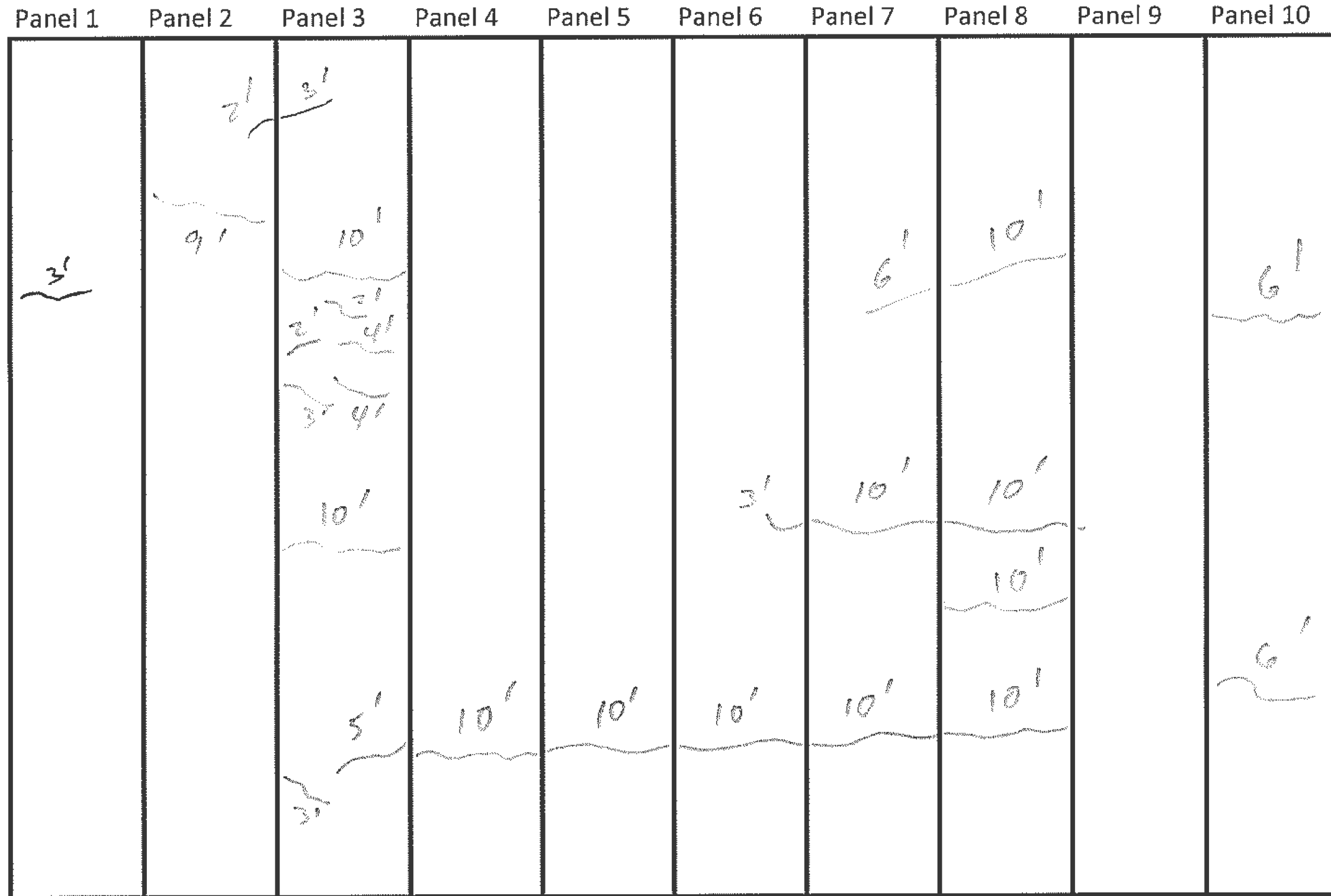
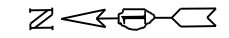
STATE OF ILLINOIS  
DEPARTMENT OF TRANSPORTATION

LOC. 3) SN 016-1145  
75TH ST. OVER I-94 (DAN RYAN EXPY.)

SCALE: SHEET 1 OF 3 SHEETS STA. TO STA.

VAR. RTE.	SECTION	COUNTY	TOTAL SHEETS	SHEET NO.
VAR.	2017-0171	COOK	21	10
CONTRACT NO. 62F36				
ILLINOIS FED. AID PROJECT				

# East Slope Wall Field Notes



### LEGEND



CRACKS TO BE SEALED WITH "SLOPE WALL CRACK SEALING"

### BILL OF MATERIAL

DESCRIPTION	UNIT	QUANTITY
SLOPE WALL CRACK SEALING	FOOT	171

MODEL: Default  
 FILE: \\nas01.cba.illinois.gov\pww\DOT\Documents\DOT\_Offices\DI\28617\CADD\data\Design\DI28617.dwg  
 PLOT DATE = 8/24/2017

USER NAME = diaza	DESIGNED -	REVISED -	
	DRAWN -	REVISED -	
PLOT SCALE = 100,0000' / in.	CHECKED -	REVISED -	
	DATE -	REVISED -	

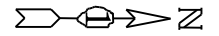
**STATE OF ILLINOIS  
DEPARTMENT OF TRANSPORTATION**

**LOC. 3) SN 016-1145  
75TH ST. OVER I-94 (DAN RYAN EXPY.)**

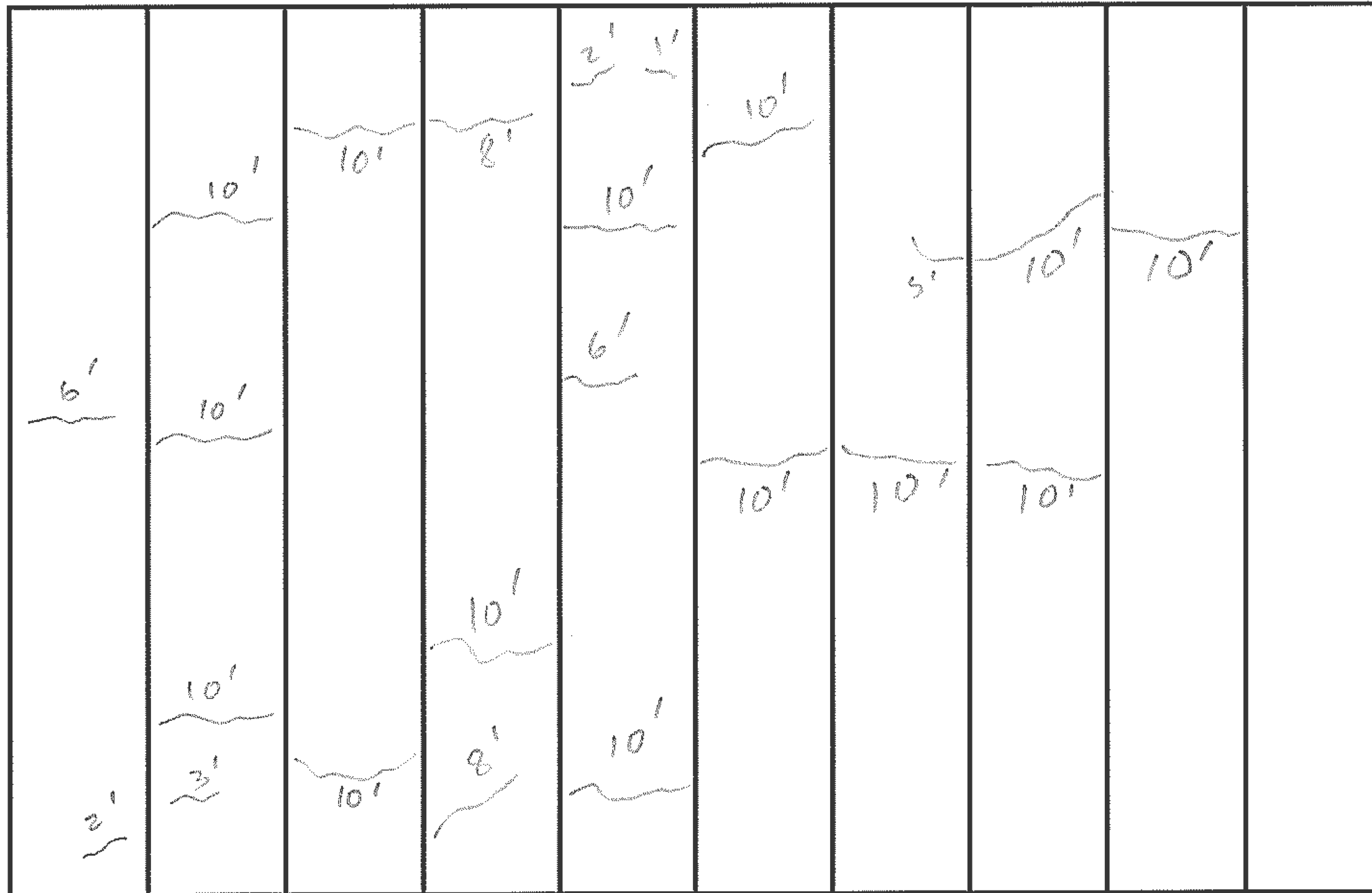
SCALE: SHEET 2 OF 3 SHEETS STA. TO STA.

VAR. RTE.	SECTION	COUNTY	TOTAL SHEETS	SHEET NO.
	2017-0171	COOK	21	11
CONTRACT NO. 62F36				
ILLINOIS FED. AID PROJECT				

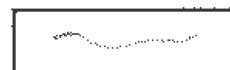
# West Slope Wall Field Notes



Panel 1    Panel 2    Panel 3    Panel 4    Panel 5    Panel 6    Panel 7    Panel 8    Panel 9    Panel 10



### LEGEND



CRACKS TO BE SEALED WITH "SLOPE WALL CRACK SEALING"

### BILL OF MATERIAL

DESCRIPTION	UNIT	QUANTITY
SLOPE WALL CRACK SEALING	FOOT	179

MODEL: Default  
 FILE: \\nas01.cba.illinois.gov\pww\DOT\Documents\DOT\_Offices\DI\28617\CADD\data\Defm\DI28617.dwg  
 PLOT DATE = 8/24/2017

USER NAME = diaza	DESIGNED -	REVISED -
	DRAWN -	REVISED -
PLOT SCALE = 100.0000' / in.	CHECKED -	REVISED -
PLOT DATE = 8/24/2017	DATE -	REVISED -

**STATE OF ILLINOIS  
DEPARTMENT OF TRANSPORTATION**

**LOC. 3) SN 016-1145  
75TH ST. OVER I-94 (DAN RYAN EXPY.)**

SCALE: SHEET 3 OF 3 SHEETS STA. TO STA.

VAR. RTE.	SECTION	COUNTY	TOTAL SHEETS	SHEET NO.
	2017-017I	COOK	21	12
			CONTRACT NO. 62F36	
		ILLINOIS FED. AID PROJECT		



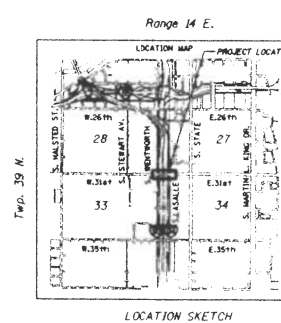
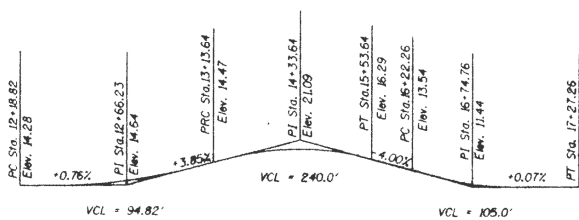
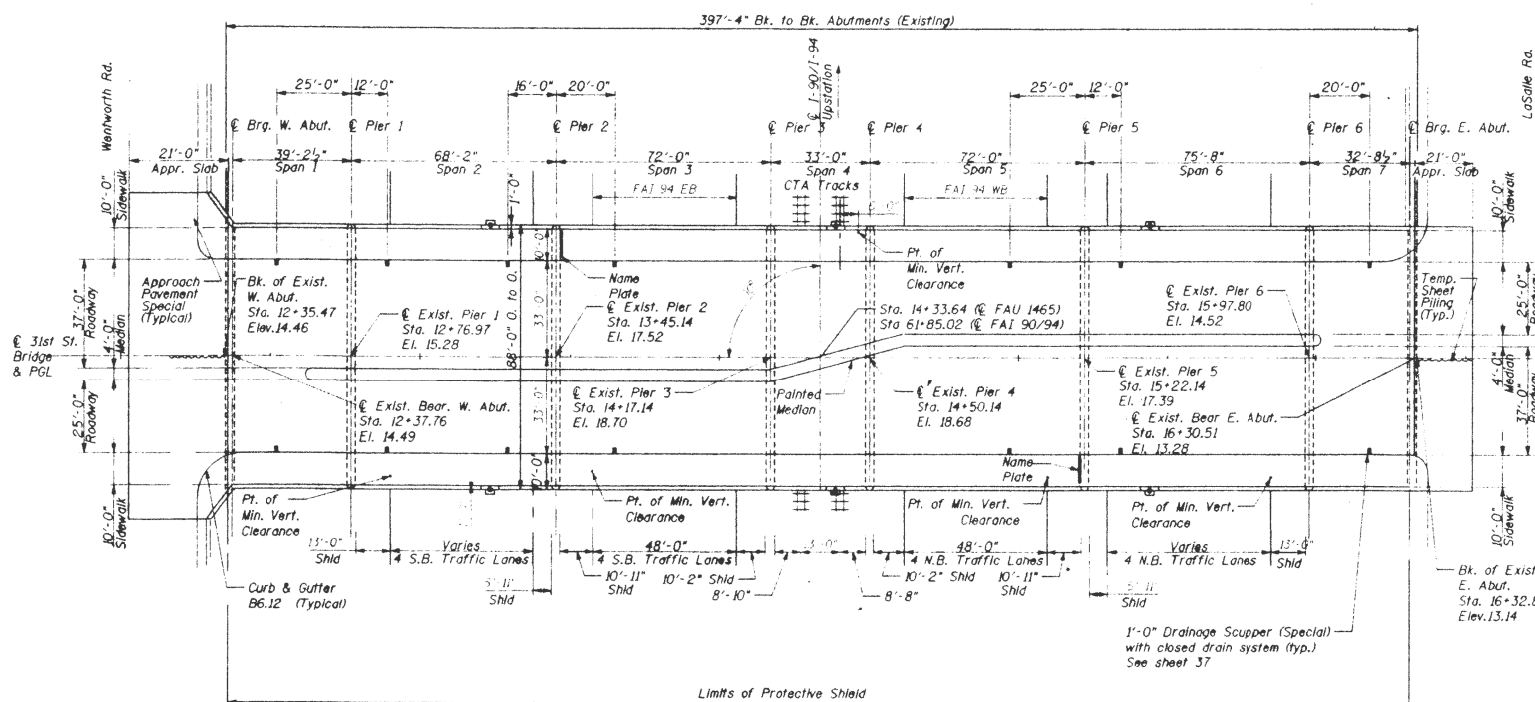
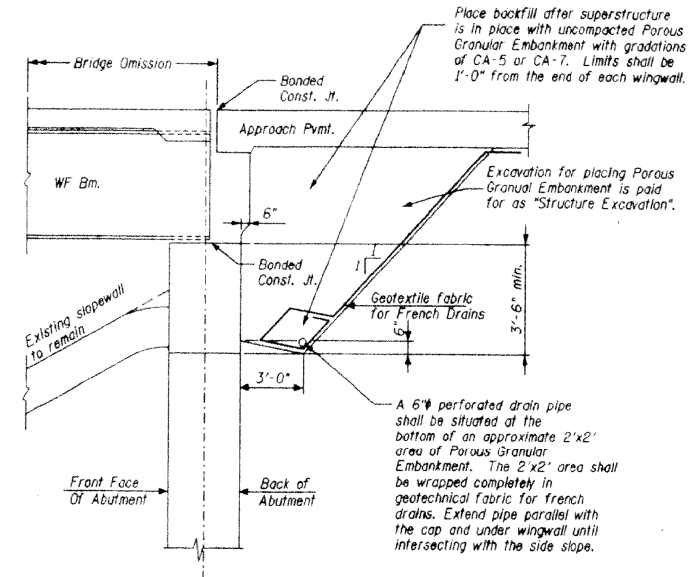
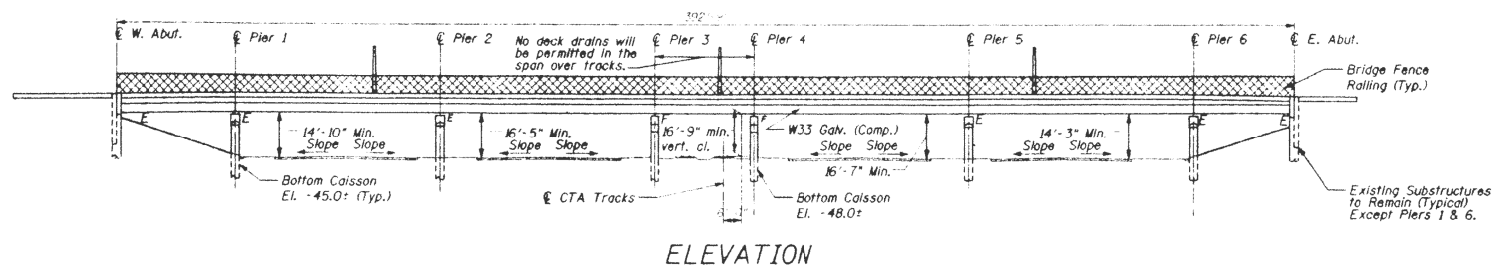
# FOR INFORMATION ONLY

## EXISTING STRUCTURE DESCRIPTION

**STRUCTURE DESCRIPTION**  
The existing bridge (SK. 016-1159) is a seven span bridge with five continuous steel spans and two simply supported concrete T beam spans with a bituminous overlay. Built as F.A.U. Route 1465, Section S-2424.2-1B at Sta. 10+00.000 in 1961. The total length back to back of abutments is 397'-4". The existing spans are 30'-0", 68'-2", 72'-0", 33'-0", 72'-0", 75'-8" and 33'-6". The structure is skewed 0°00'00". Piers 1, 2, 5 and 6 are column bents. Piers 3 and 4 are hammerheads. The piers and the stub abutments are formed on belted caisson shafts. Traffic shall be maintained during the rehabilitation of the structure by slope construction. No savings.

Bench Mark: 422 - Cook Co. Highway Dept. Located at the intersection of 32nd Street and Wabash Avenue, 8.5 feet south of the North R.O.W. line and 19.6 feet West of West R.O.W. Line. Elevation 593.75'. Cook County Highway Dept. 14.437'.

Bench Mark: 205 - Found 3-1/4" Brass Disk in Conc. Sidewalk on Northside of 31st St. East of State St. Elev. 15.09'. Chicago City Datum.



**GENERAL PLAN**  
31st STREET (F.A.U. 1465) OVER  
DAN RYAN EXPRESSWAY  
F.A.U. ROUTE 90/94  
SECTION S-2424.2-1B  
COOK COUNTY  
STA. 14+33.635  
S.N. 016-1159

## DESIGN SPECIFICATIONS

1996 AASHTO & Interim 1997 & 1998 & 1999  
1995 Seismic Retrofitting Manual for Highway Bridges (FHWA-RD-94-052)

## LOADING HS 20

Allow 50 #/sq. ft. for future wearing surface

## DESIGN STRESSES

### EXIST. CONSTRUCTION

$f_c = 14000$  psi  
 $f_s = 20,000$  psi (Reinf.)

### NEW CONSTRUCTION

$f_c = 3500$  psi  
 $f_y = 50,000$  psi (Struct. Steel, M270, Gr. 50)  
 $f_s = 60,000$  psi (Reinf.)

## SEISMIC DATA

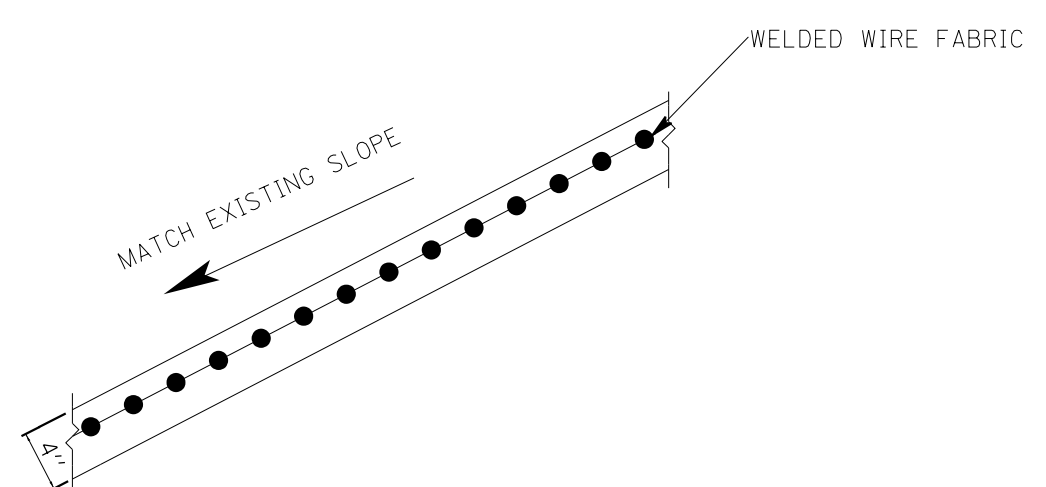
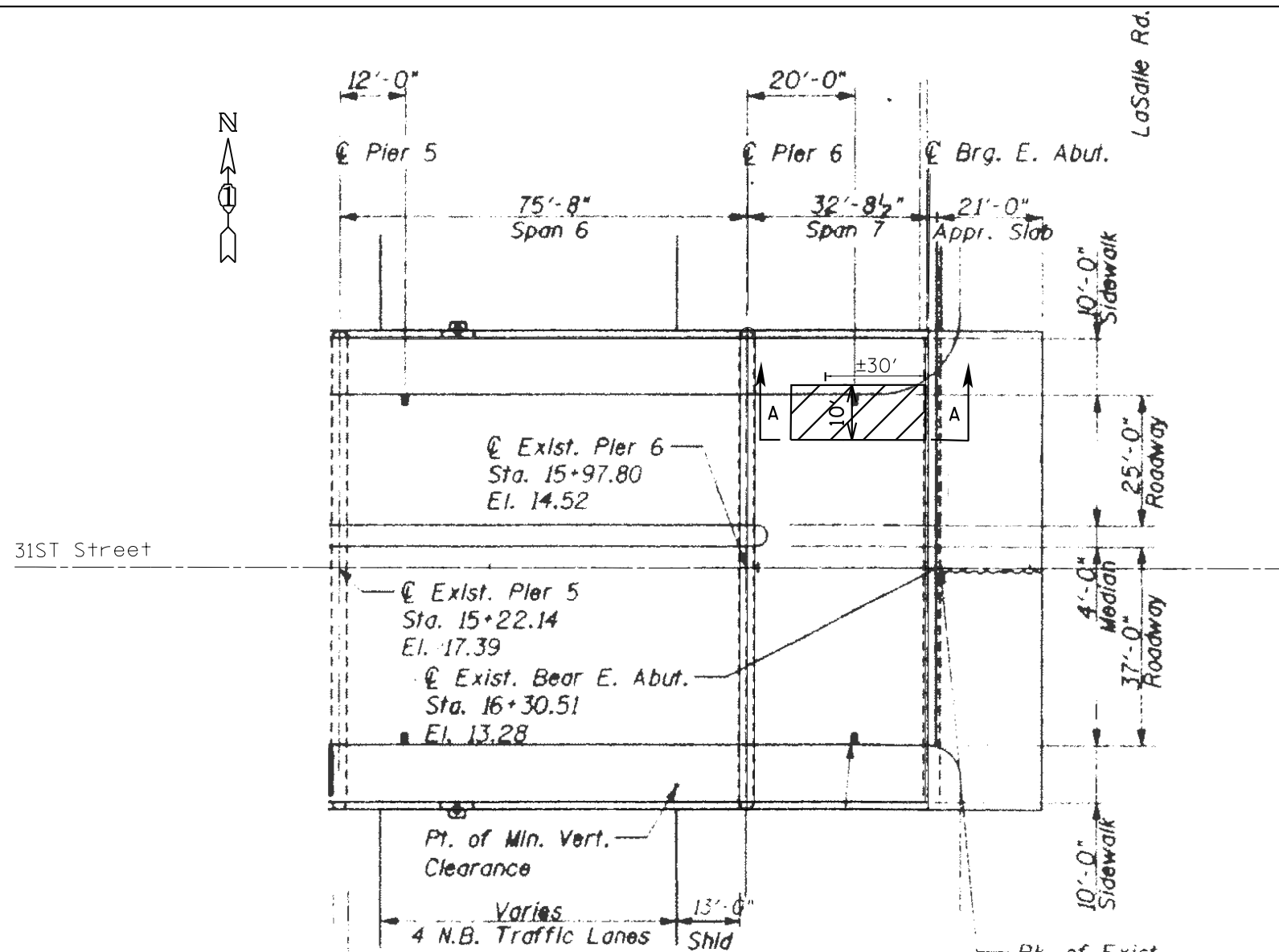
S.P.C. = A  
A = 0.04g  
S = 1.0

STATE OF ILLINOIS  
DEPARTMENT OF TRANSPORTATION

LOC. 4) SN 016-1159  
31ST ST. OVER I-90 / I-94 (DAN RYAN EXPY.)

VAR. RTE.	SECTION	COUNTY	TOTAL SHEETS	SHEET NO.
VAR.	2017-0171	COOK	21	13
CONTRACT NO. 62F36				
ILLINOIS FED. AID PROJECT				

SCALE: SHEET 1 OF 4 SHEETS STA. TO STA.



SECTION A-A

LEGEND

 HATCHED AREAS INDICATE "SLOPE WALL REMOVAL", "SLOPEWALL 4 inch" and FILL WITH "POROUS GRANULAR EMBANKMENT"

BILL OF MATERIAL

DESCRIPTION	UNIT	QUANTITY
POROUS GRANULAR EMBANKMENT	CU YD	23
PROTECTIVE COAT	SO YD	35
SLOPE WALL REMOVAL	SO YD	35
SLOPE WALL 4 INCH	SO YD	35
SLOPE WALL CRACK SEALING	FOOT	292

NOTES:

SLOPEWALL GUTTER SHALL BE CLEANED OUT  
COST INCLUDED IN SLOPEWALL REMOVAL.

SLOPEWALL SHALL BE REINFORCED WITH WELDED WIRE FABRIC 6 in. x 6 in. W4.0xW4.0 WEIGHING 58 LBS PER 100 SQ.FT. COST OF THE MESH IS INCLUDED IN THE COST OF "SLOPEWALL 4 INCH".



SLOPE WALL REPAIR AREA

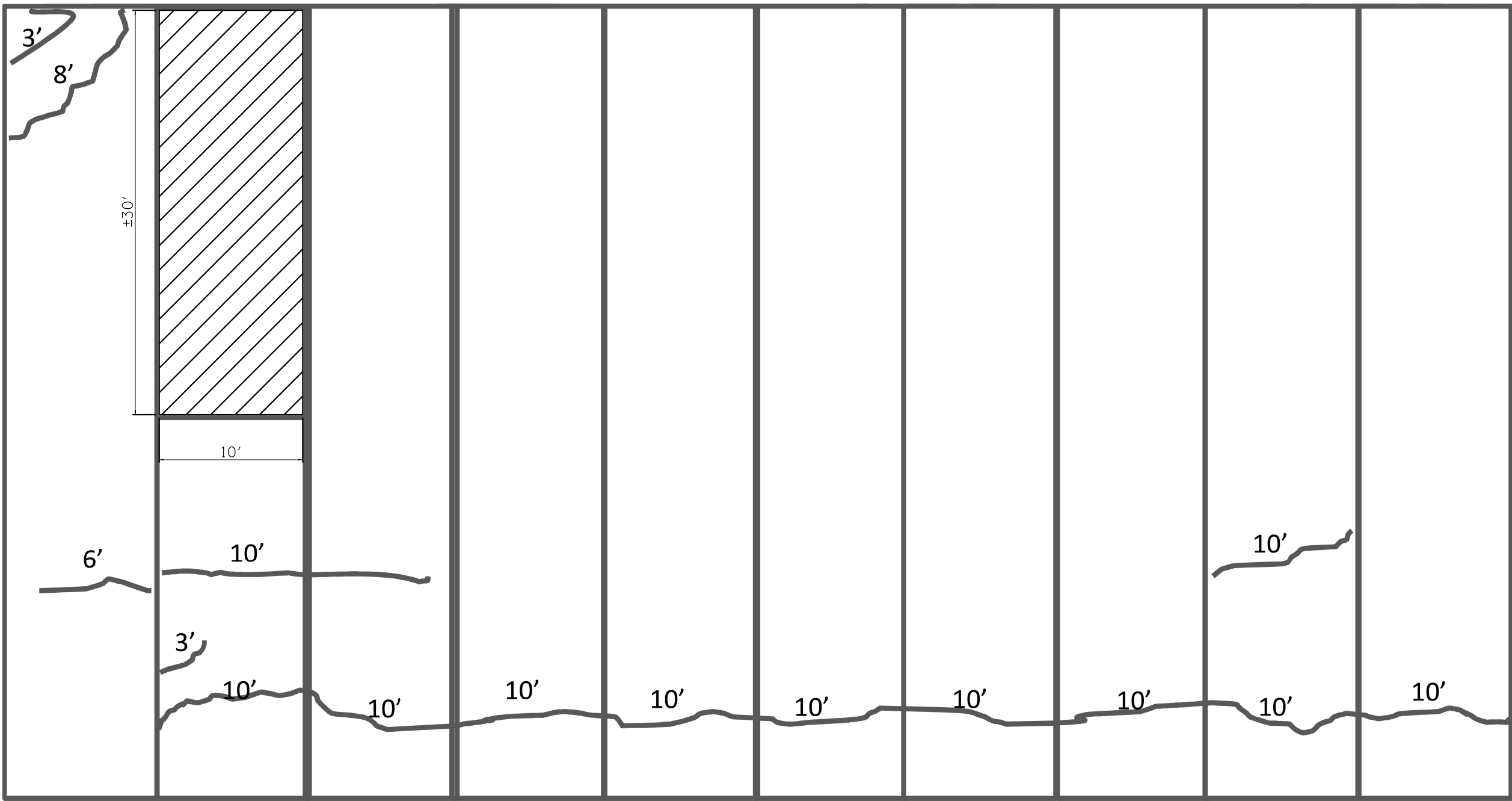
MODEL: Default  
FILE: \\mhp\p\110848\BID\ITEC\Illinois\gov\PI\DOT\Documents\1\DOT\Office\Bierfel\1\Projects\1288\1\CAD\Drawings\128817-shd-41n.dwg

USER NAME = diazia	DESIGNED -	REVISED -
PLOT SCALE = 100.0388' / in.	DRAWN -	REVISED -
PLOT DATE = 8/24/2017	CHECKED -	REVISED -
	DATE -	REVISED -

STATE OF ILLINOIS  
DEPARTMENT OF TRANSPORTATION

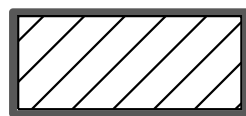
LOC. 4) SN 016-1159  
31ST ST. OVER I-90 / I-94 (DAN RYAN EXPY.)  
SCALE: SHEET 2 OF 4 SHEETS STA. TO STA.

VAR. RTE.	SECTION	COUNTY	TOTAL SHEETS	SHEET NO.
VAR.	2017-0171	COOK	21	14
CONTRACT NO. 62F36				
ILLINOIS FED. AID PROJECT				



## East Abutment Slope Wall

### LEGEND



HATCHED AREAS INDICATE "SLOPE WALL REMOVAL",  
"SLOPEWALL 4 inch" and FILL WITH "POROUS  
GRANULAR EMBANKMENT"



CRACKS TO BE SEALED WITH "SLOPE WALL CRACK SEALING"

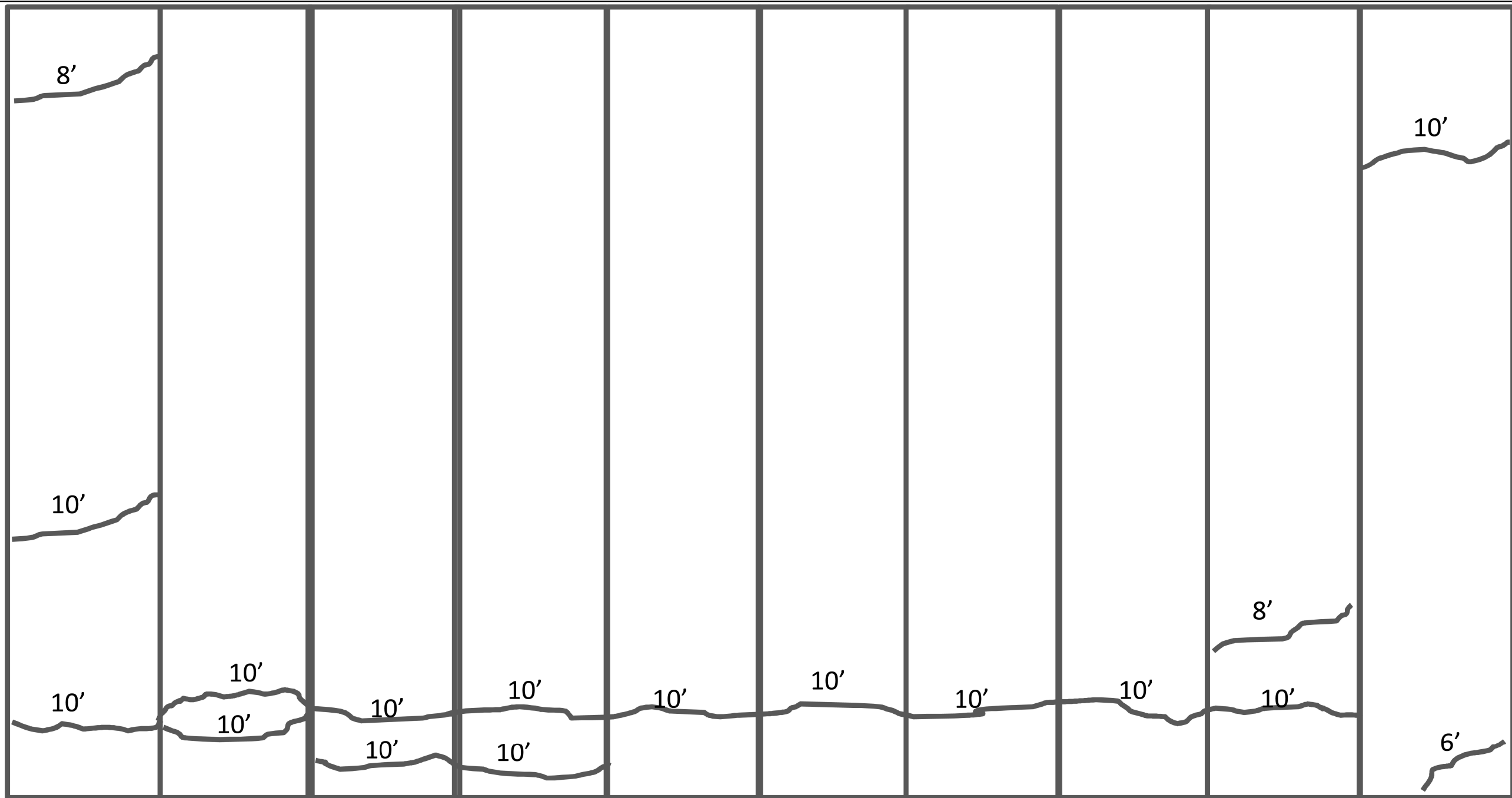
MODEL: Default  
 FILE: \\nas01c.pva\ulb084E8D1D1E5C\Illinois.gov\PIWDOT\Documents\DOT\_Offices\Director\Projects\128617\CADD\Drawings\128617-eh-plain.dgn

USER NAME = diaza	DESIGNED -	REVISED -
	DRAWN -	REVISED -
PLOT SCALE = 100.0000' / in.	CHECKED -	REVISED -
PLOT DATE = 8/24/2017	DATE -	REVISED -

**STATE OF ILLINOIS  
DEPARTMENT OF TRANSPORTATION**

<b>LOC. 4) SN 016-1159</b>	
<b>31ST ST. OVER I-90 / I-94 (DAN RYAN EXPY.)</b>	
SCALE:	SHEET 3 OF 4 SHEETS STA. TO STA.

VAR. RTE.	SECTION	COUNTY	TOTAL SHEETS	SHEET NO.
VAR.	COOK	2017-017I	21	15
CONTRACT NO. 62F36				
ILLINOIS		FED. AID PROJECT		



## West Abutment Slope Wall

### LEGEND



CRACKS TO BE SEALED WITH "SLOPE WALL CRACK SEALING"

MODEL: Default  
 FILE NAME: C:\Users\paulb@EBID\OneDrive\Documents\DOT Office\DIR\ct 1\Projects\128617\CADD\data\Design\128617-shr-pln.dgn

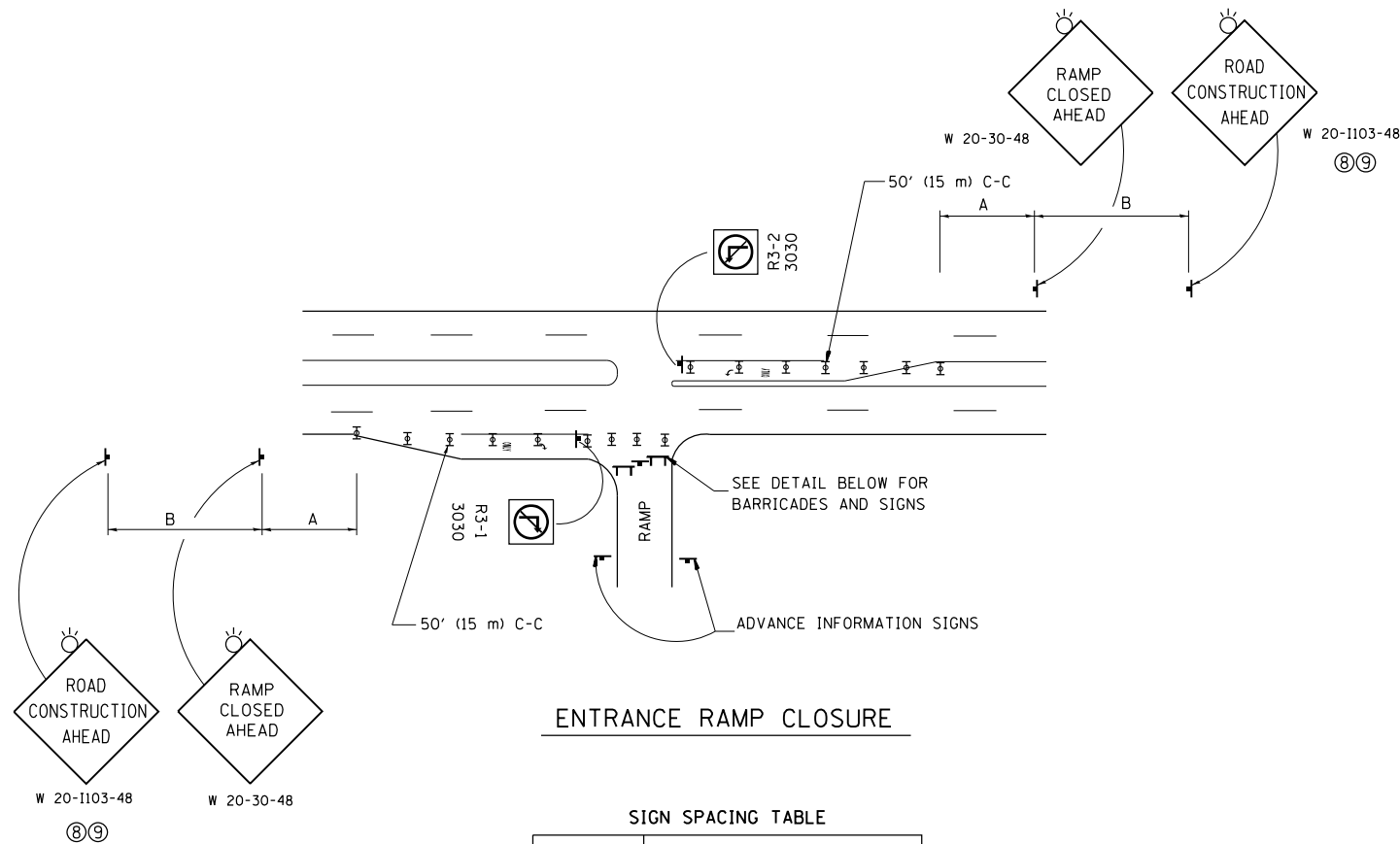
USER NAME = diaza	DESIGNED -	REVISED -
	DRAWN -	REVISED -
PLOT SCALE = 100.0000' / in.	CHECKED -	REVISED -
PLOT DATE = 8/24/2017	DATE -	REVISED -

**STATE OF ILLINOIS  
DEPARTMENT OF TRANSPORTATION**

**LOC. 4) SN 016-1159  
31ST ST. OVER I-90 / I-94 (DAN RYAN EXPY.)**

SCALE: SHEET 4 OF 4 SHEETS STA. TO STA.

VAR. RTE.	SECTION	COUNTY	TOTAL SHEETS	SHEET NO.
VAR.	2017-017I	COOK	21	16
CONTRACT NO. 62F36				
ILLINOIS FED. AID PROJECT				

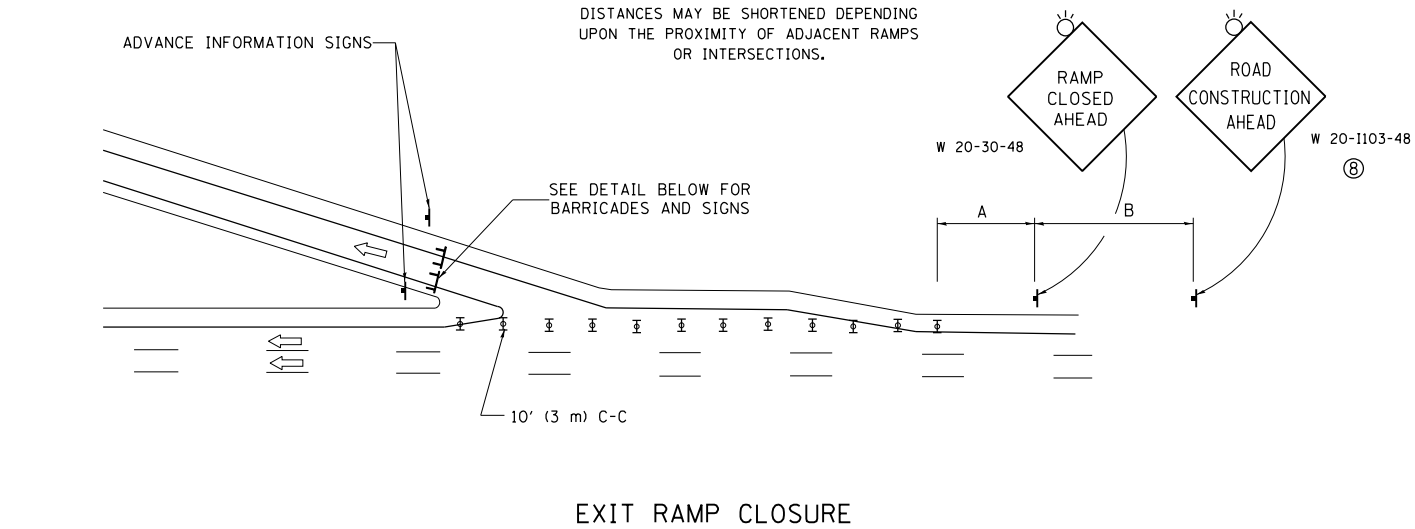


**ENTRANCE RAMP CLOSURE**

**SIGN SPACING TABLE**

FACILITY	DISTANCE BETWEEN SIGNS	
	A	B
EXPRESSWAY >24 HOURS	1000' (300 m)	1500' (450 m)
EXPRESSWAY <24 HOURS	500' (150 m)	500' (150 m)
ARTERIAL 55 MPH	500' (150 m)	500' (150 m)
ARTERIAL 50-45 MPH	350' (100 m)	350' (100 m)
ARTERIAL <45 MPH	200' (60 m)	200' (60 m)

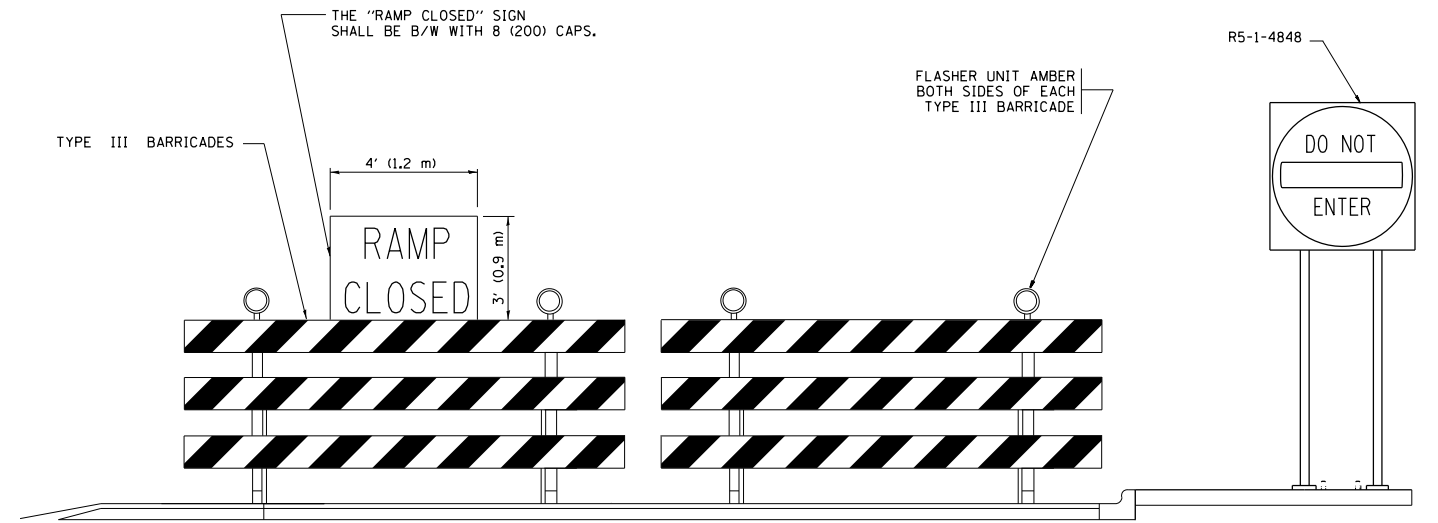
DISTANCES MAY BE SHORTENED DEPENDING UPON THE PROXIMITY OF ADJACENT RAMPS OR INTERSECTIONS.



**EXIT RAMP CLOSURE**

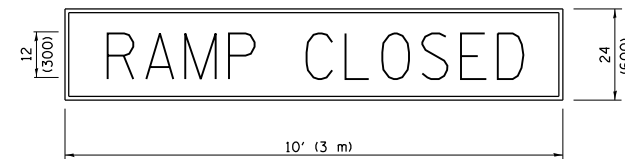
**SYMBOLS**

- ⊥ TYPE II BARRICADE OR DRUM WITH STEADY BURN MONO-DIRECTIONAL LIGHT
- ⊓ TYPE III BARRICADE WITH 2 FLASHING LIGHTS



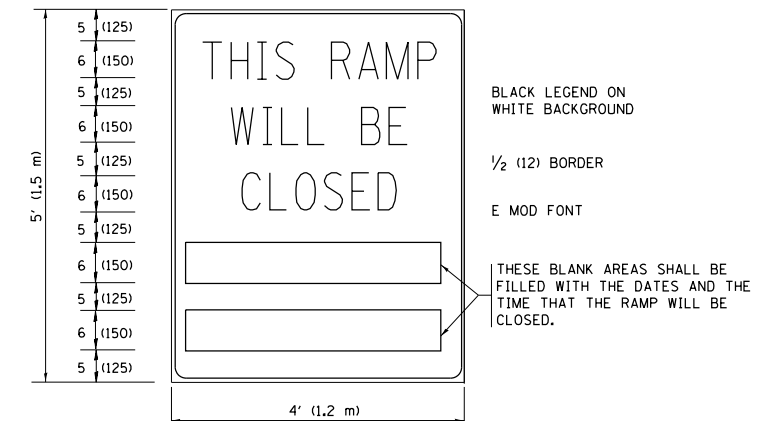
**DETAIL FOR REQUIRED BARRICADES & SIGNS**

**RAMP CLOSURE ADVANCE WARNING SIGN**



BLACK LEGEND ON ORANGE BACKGROUND MOUNTED DIAGONALLY E MOD FONT 1 (25) BORDER  
 THESE SIGNS ARE REQUIRED ON ALL THE EXIT GUIDE SIGNS FOR EXIT RAMPS THAT WILL BE CLOSED FOR MORE THAN FOUR (4) CONSECUTIVE DAYS.

**RAMP CLOSURE ADVANCE INFORMATION SIGN**



THESE SIGNS ARE REQUIRED ON BOTH SIDES OF THE RAMP, MINIMUM OF 1 WEEK IN ADVANCE OF THE CLOSURE.

THESE SIGNS SHALL BE FABRICATED AND PAID FOR ACCORDING TO THE TEMPORARY INFORMATION SIGNING SPECIAL PROVISION

**GENERAL NOTES:**

- ① CONES MAY BE SUBSTITUTED FOR DRUMS OR TYPE II BARRICADES DURING DAY OPERATIONS. CONES SHALL BE A MINIMUM OF 28 (700) HIGH.
- ② STEADY BURN LIGHTS WILL NOT BE REQUIRED FOR DAY OPERATIONS.
- ③ A FLAGGER SHALL BE POSITIONED AT EACH CLOSED RAMP THAT IS OPEN TO CONSTRUCTION VEHICLES, PRECEDED BY A W20-7 FLAGGER WARNING SIGN.
- ④ ALL ROUTE MARKERS AND TRAILBLAZER ASSEMBLIES WHICH DIRECT MOTORISTS TO A CLOSED ENTRANCE RAMP SHALL BE COVERED WHEN THE RAMP IS CLOSED FOR MORE THAN FOUR (4) DAYS.
- ⑤ THE SIGNING AND BARRICADING WHICH IS REQUIRED BY THIS DETAIL SHALL BE INCLUDED IN THE COST OF TRAFFIC CONTROL AND PROTECTION (EXPRESSWAYS).
- ⑥ AUTHORIZATION FROM THE DISTRICT'S BUREAU OF TRAFFIC IS REQUIRED FOR ALL RAMP CLOSURES.
- ⑦ THE RAMP CLOSURE ADVANCE INFORMATION SIGNS SHALL BE ERECTED IF THE CLOSURE TIME EXCEEDS TWENTY-FOUR (24) HOURS. ADDITIONAL ADVANCE WARNING SIGNS ON EXIT GUIDE SIGNING WILL BE REQUIRED FOR EXIT RAMP CLOSURES THAT EXCEED FOUR (4) DAYS IN LENGTH
- ⑧ ROAD CONSTRUCTION AHEAD SIGNS MAY BE OMITTED WHEN THIS DETAIL IS USED IN CONJUNCTION WITH OTHER TRAFFIC CONTROL THAT ALREADY INCLUDES A ROAD CONSTRUCTION AHEAD SIGN.
- ⑨ ARTERIAL ROAD CONSTRUCTION AHEAD SIGNS SHALL BE INSTALLED ON THE LEFT SIDE OF TRAFFIC IF THE MEDIAN IS MORE THAN 10 FT WIDE.

ALL DIMENSIONS ARE IN INCHES (MILLIMETERS) UNLESS OTHERWISE SHOWN.

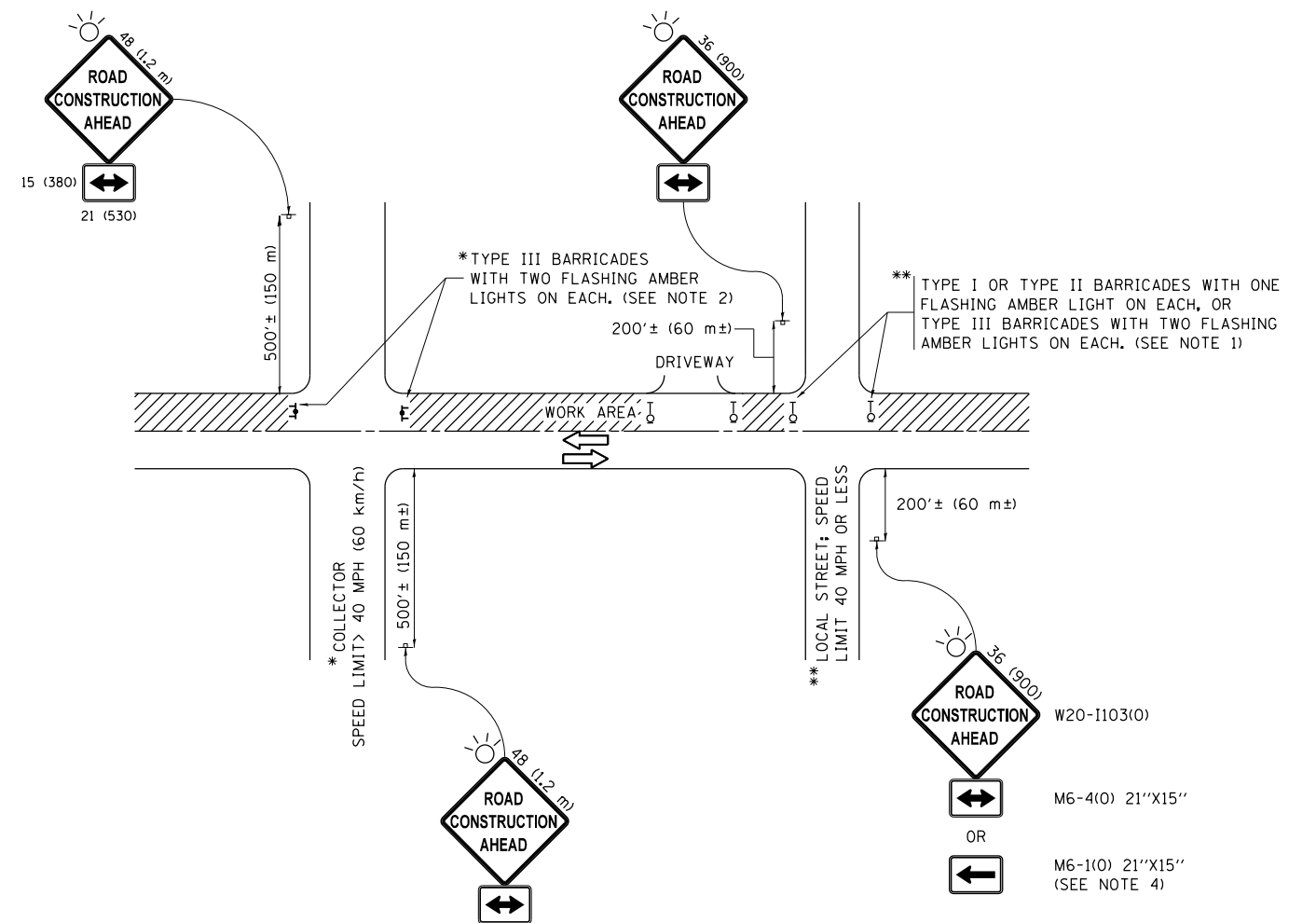
FILE NAME =	USER NAME = diazo	DESIGNED - DWS	REVISED - JAF 02-06
pw\11084EBIDINTEG.illinois.gov\PIWIDOT\Documents\IDOT Offices\District 1\Projects\DI286\Drawings\Design\DistStd.dgn		REVISED - SPB 01-07	
PLOT SCALE = 100.0000' / 1in.	CHECKED -	REVISED - SPB 12-09	
PLOT DATE = 8/24/2017	DATE - 02-83	REVISED - MD 06-13	

**STATE OF ILLINOIS  
DEPARTMENT OF TRANSPORTATION**

**ENTRANCE AND EXIT RAMP  
CLOSURE DETAILS**

SCALE: NONE SHEET NO. 1 OF 1 SHEETS STA. TO STA.

F.A. RTE.	SECTION	COUNTY	TOTAL SHEETS	SHEET NO.
VAR.	2017-017I	COOK	21	17
TC-08		CONTRACT NO. 62F36		
FED. ROAD DIST. NO. 1 ILLINOIS FED. AID PROJECT				



**NOTES:**

1. SIDE ROAD WITH A SPEED LIMIT OF 40 MPH (60 km/h) OR LESS AS SHOWN ON THE DRAWING AND AS DIRECTED BY THE ENGINEER:
  - a) ONE "ROAD CONSTRUCTION AHEAD" SIGN 36 x 36 (900x900) WITH A FLASHER MOUNTED ON IT APPROXIMATELY 200' (60 m) IN ADVANCE OF THE MAIN ROUTE.
  - b) THE CLOSED PORTION OF THE MAIN ROUTE SHALL BE PROTECTED BY BLOCKING WITH TYPE I, TYPE II OR TYPE III BARRICADES, 1/3 OF THE CROSS SECTION OF THE CLOSED PORTION.
2. SIDE ROAD WITH A SPEED LIMIT GREATER THAN 40 MPH (60 km/h) AS SHOWN ON THE DRAWING AND AS DIRECTED BY THE ENGINEER:
  - a) ONE "ROAD CONSTRUCTION AHEAD" SIGN 48 x 48 (1.2 m x 1.2 m) WITH A FLASHER MOUNTED ON IT APPROXIMATELY 500' (150 m) IN ADVANCE OF THE MAIN ROUTE.
  - b) THE CLOSED PORTION OF THE MAIN ROUTE SHALL BE PROTECTED BY BLOCKING WITH TYPE III BARRICADES, 1/2 OF THE CROSS SECTION OF THE CLOSED PORTION.
3. CONES MAY BE SUBSTITUTED FOR BARRICADES OR DRUMS AT HALF THE SPACING DURING DAY OPERATIONS. CONES SHALL BE A MINIMUM OF 28 (710) IN HEIGHT.
4. WHEN THE SIDE ROAD LIES BETWEEN THE BEGINNING OF THE MAINLINE SIGNING AND THE WORK ZONE, A SINGLE HEADED ARROW (M6-1) SHALL BE USED IN LIEU OF THE DOUBLE HEADED ARROW (M6-4).
5. WHEN WORK IS BEING PERFORMED ON A SIDE ROAD OR DRIVEWAY, FOLLOW THE APPLICABLE STANDARD(S). THE DIRECTIONAL ARROW (M6-1 OR M6-4) SHALL BE COVERED OR REMOVED WHEN NO LONGER CONSISTENT WITH THE TRAFFIC CONTROL SET-UP.
6. ADVANCE WARNING SIGNS ARE TO BE OMITTED ON DRIVEWAYS UNLESS OTHERWISE SPECIFIED IN THE PLANS OR BY THE ENGINEER.
7. THE TRAFFIC CONTROL AND PROTECTION FOR SIDE ROADS, INTERSECTIONS, AND DRIVEWAYS SHALL BE INCLUDED IN THE COST OF SPECIFIED TRAFFIC CONTROL STANDARDS OR ITEMS.

All dimensions are in inches (millimeters) unless otherwise shown.

FILE NAME =	USER NAME = diazio	DESIGNED - L.H.A.	REVISED - A. HOUSEH 10-15-96
pw:\IL\084EBIDINTEG.illinois.gov\PIWIDOT\Documents\IDOT Offices\District 1\Projects\DI286\Drawings\Design\DistStd.dgn			REVISED - T. RAMMACHER 01-06-00
Default	PLOT SCALE = 100.0000' / in.	CHECKED -	REVISED - A. SCHUETZE 07-01-13
	PLOT DATE = 8/24/2017	DATE - 06-89	REVISED - A. SCHUETZE 09-15-16

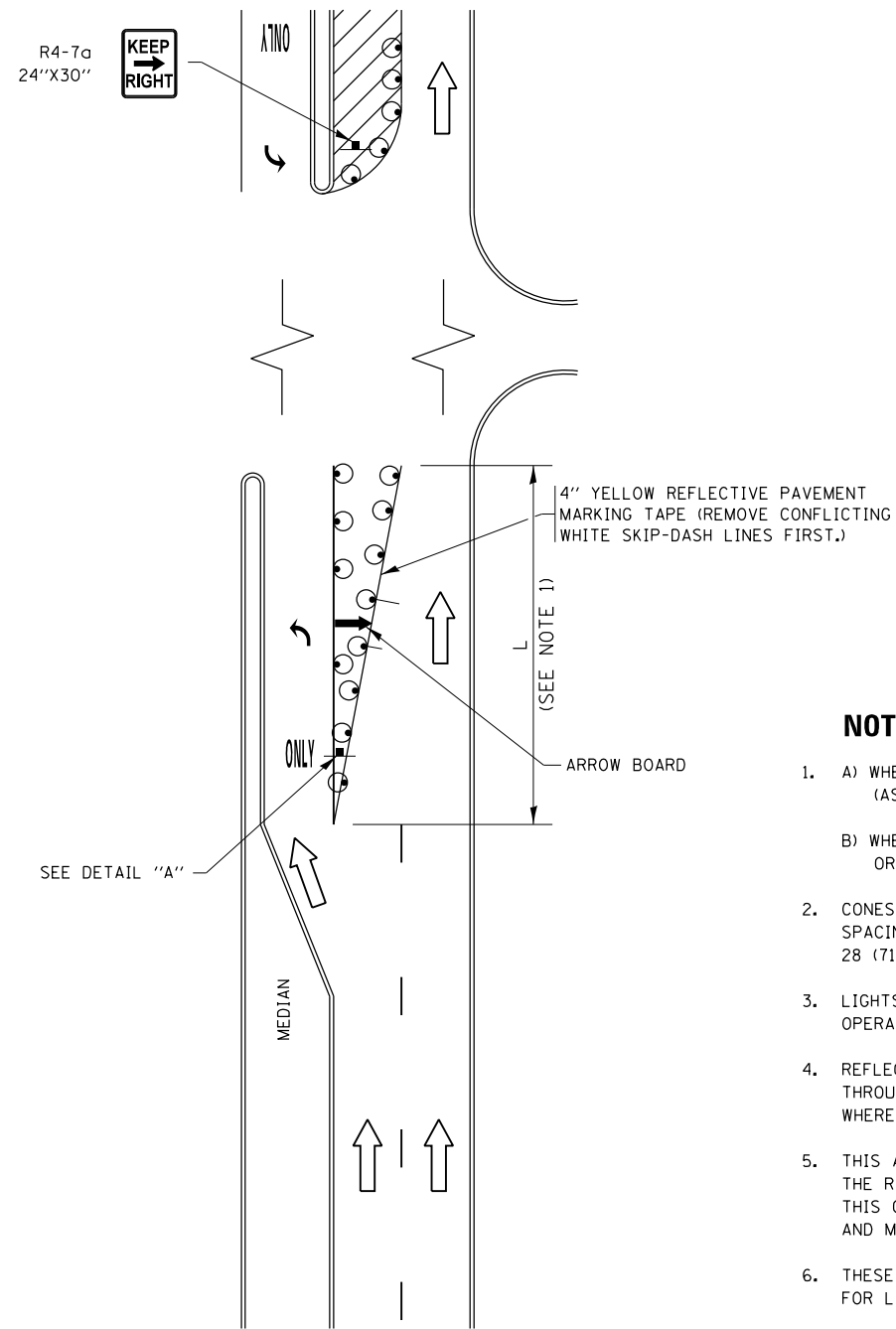
**STATE OF ILLINOIS  
DEPARTMENT OF TRANSPORTATION**

**TRAFFIC CONTROL AND PROTECTION FOR  
SIDE ROADS, INTERSECTIONS, AND DRIVEWAYS**

SCALE: NONE SHEET 1 OF 1 SHEETS STA. TO STA.

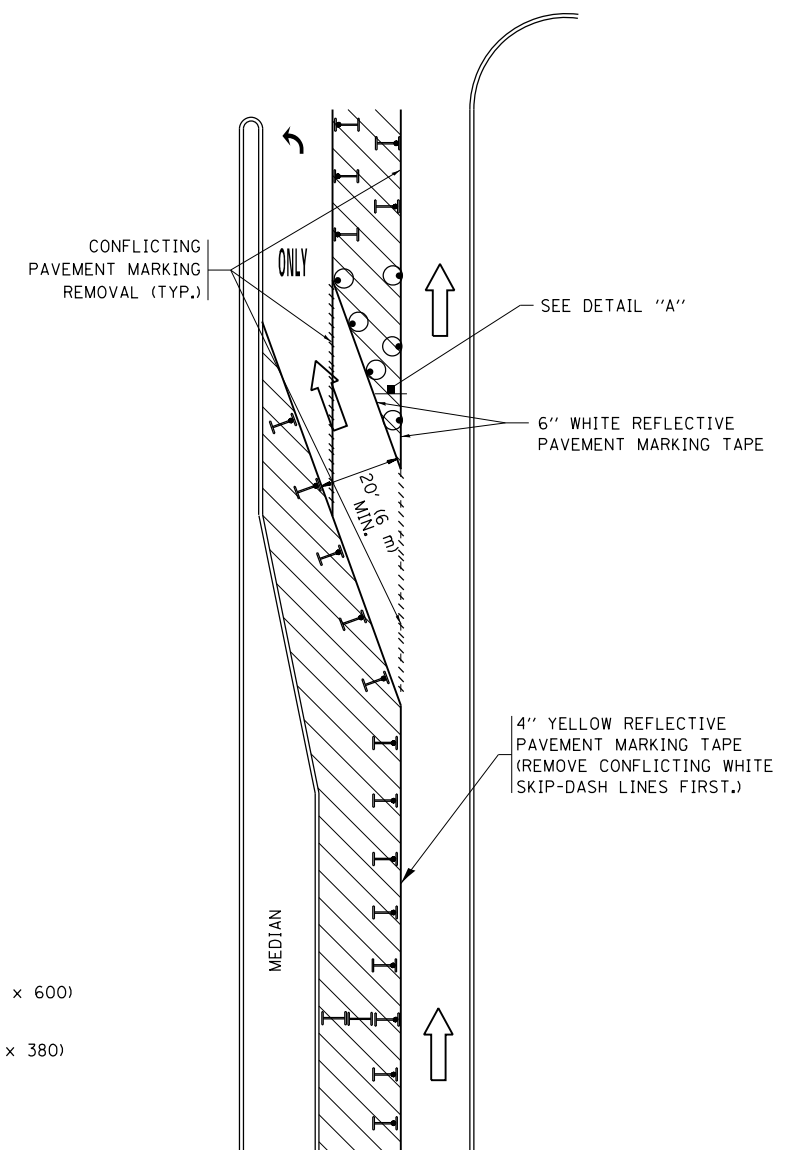
F.A. RTE.	SECTION	COUNTY	TOTAL SHEETS	SHEET NO.
VAR.	2017-017I	COOK	21	18
<b>TC-10</b>			<b>CONTRACT NO. 62F36</b>	
ILLINOIS FED. AID PROJECT				

# TURN BAY ENTRANCE AT START OF LANE CLOSURE TAPER



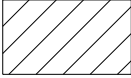



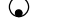


**FIGURE 1**

# TURN BAY ENTRANCE WITHIN A LANE CLOSURE



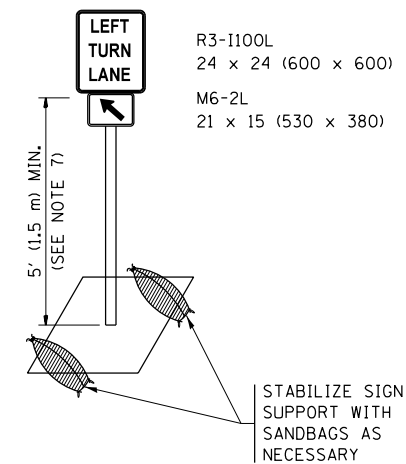
**FIGURE 2**

## LEGEND

-  WORK AREA
-  LANE OPEN TO TRAFFIC
-  ARROW BOARD
-  TYPE I OR II BARRICADE OR DRUM WITH STEADY BURN LIGHT
-  DRUM WITH STEADY BURN LIGHT
-  SIGN ASSEMBLY
-  TYPE I OR II CHECK BARRICADE WITH FLASHING LIGHT

## NOTES:

1. A) WHEN "L" IS  $\leq$  THE STORAGE LENGTH OF THE TURN LANE (AS SHOWN IN FIG. 1), USE FIGURE 1.  
B) WHEN "L" IS  $>$  THE STORAGE LENGTH OF THE TURN LANE OR THE TURN LANE IS WITHIN THE LANE CLOSURE, USE FIGURE 2.
2. CONES MAY BE SUBSTITUTED FOR BARRICADES OR DRUMS AT HALF THE SPACING DURING DAY OPERATIONS. CONES SHALL BE A MINIMUM OF 28 (710) IN HEIGHT.
3. LIGHTS WILL NOT BE REQUIRED ON BARRICADES OR DRUMS FOR DAY OPERATIONS. ALL LIGHTS SHALL BE MONODIRECTIONAL.
4. REFLECTIVE TEMPORARY PAVEMENT MARKINGS SHALL BE PLACED THROUGHOUT THE BARRICADED AREAS OF EACH TURN BAY AS SHOWN WHERE THE CLOSURE TIME IS GREATER THAN FOURTEEN (14) DAYS.
5. THIS APPLICATION ALSO APPLIES WHEN WORK IS BEING PERFORMED IN THE RIGHT LANE(S) AND THE RIGHT TURN BAY IS TO REMAIN OPEN. UNDER THIS CONDITION, "RIGHT TURN LANE" R3-1100R 24 x 24 (600 x 600) AND M6-2R 21 x 15 (530 x 380) SHALL BE USED.
6. THESE CONTROLS SHALL SUPPLEMENT MAINLINE TRAFFIC CONTROL FOR LANE CLOSURES.
7. THE SIGNS SHALL BE MOUNTED ABOVE THE BARRICADES/DRUMS ON SEPARATE SIGN SUPPORTS THAT MEET NCHRP 350 OR MASH PREQUIREMENTS.
8. TRAFFIC CONTROL AND PROTECTION AT TURN BAYS (TO REMAIN OPEN TO TRAFFIC) SHALL BE INCLUDED IN THE COST OF SPECIFIED TRAFFIC CONTROL STANDARDS OR ITEMS.



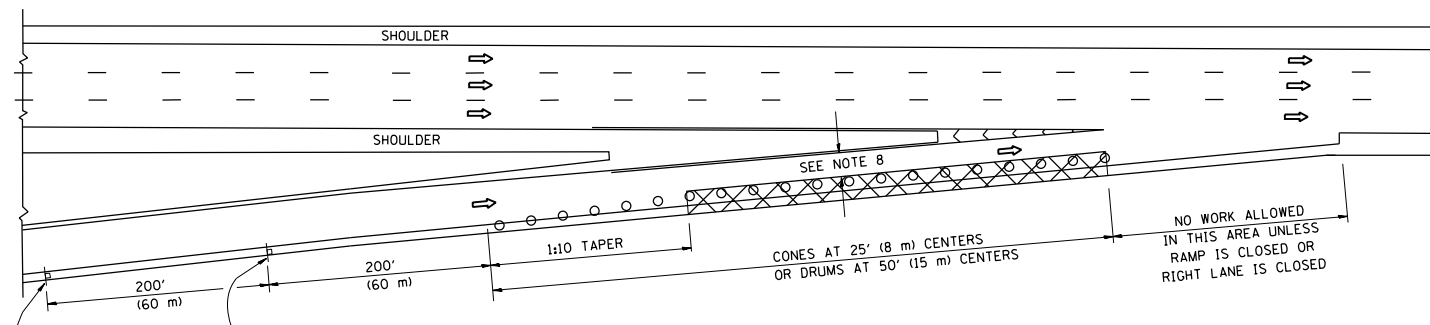
**DETAIL A**

All dimensions are in inches (millimeters) unless otherwise shown.

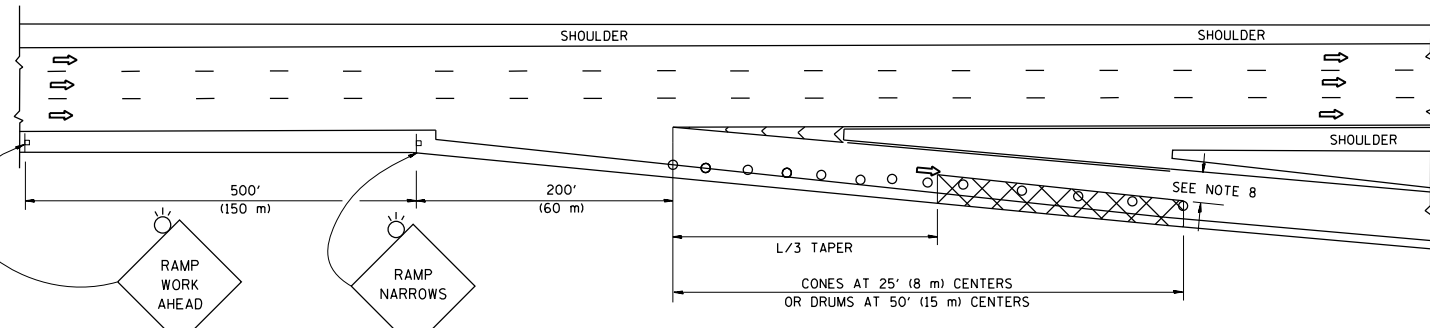
FILE NAME =	USER NAME = diazo	REVISED - T. RAMMACHER 09-08-94	REVISED - R. BORO 09-14-09	<b>STATE OF ILLINOIS DEPARTMENT OF TRANSPORTATION</b>	<b>TRAFFIC CONTROL AND PROTECTION AT TURN BAYS (TO REMAIN OPEN TO TRAFFIC)</b>			F.A. RTÉ.	SECTION	COUNTY	TOTAL SHEETS	SHEET NO.
Default		REVISED - A. HOUSEH 11-07-95	REVISED - A. SCHUETZE 07-01-13					VAR.	2017-017I	COOK	21	19
	PLOT SCALE = 100.0000' / in.	REVISED - A. HOUSEH 10-12-96	REVISED - A. SCHUETZE 09-15-16		<b>TC-14</b>			<b>CONTRACT NO.</b>				
	PLOT DATE = 8/24/2017	REVISED - T. RAMMACHER 01-06-00	REVISED -		SCALE: NONE	SHEET 1	OF 1 SHEETS	STA.	TO STA.	ILLINOIS FED. AID PROJECT		

PARTIAL RAMP CLOSURE DETAILS

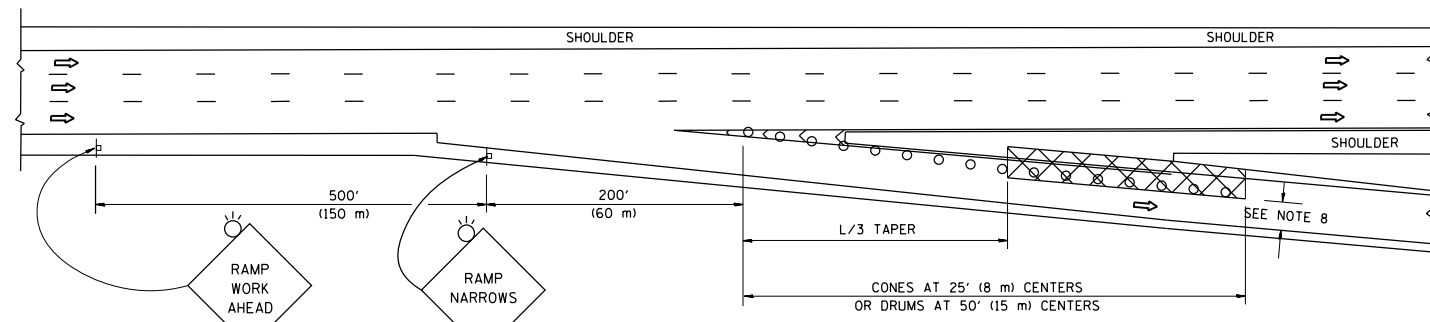
SHOULDER CLOSURE DETAILS



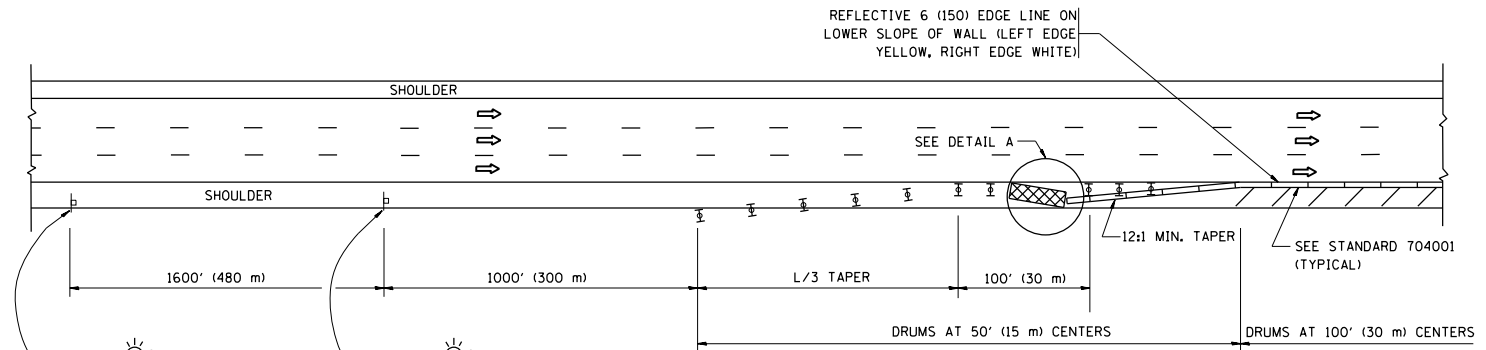
TYPICAL ENTRANCE RAMP



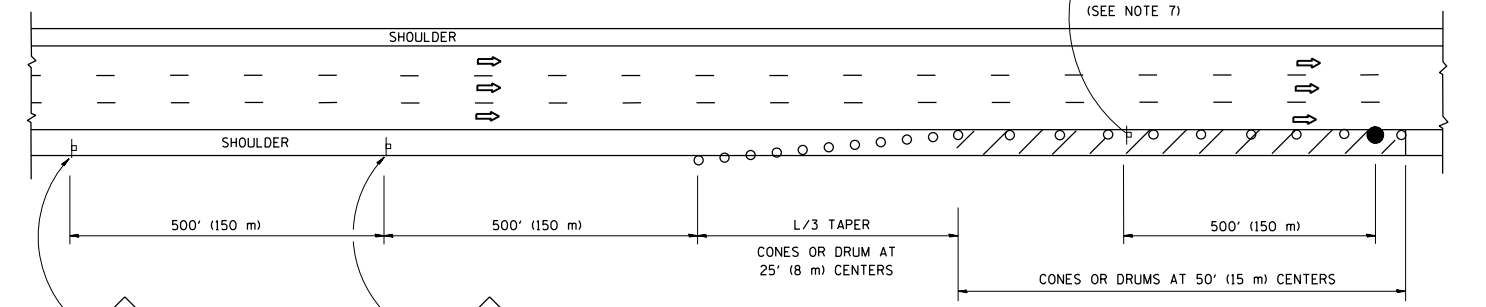
TYPICAL EXIT RAMP



TYPICAL EXIT RAMP



PERMANENT SHOULDER CLOSURE



DAYTIME SHOULDER CLOSURE

SYMBOLS

- ACTIVE WORK AREA
- SIGN ON PORTABLE OR PERMANENT SUPPORT
- FLAGGER WITH CONTROL SIGN
- TYPE II BARRICADE OR DRUM WITH STEADY BURN MONO-DIRECTIONAL LIGHT
- CONE, DRUM OR BARRICADE
- IMPACT ATTENUATOR OF TYPE AND TEST LEVEL SPECIFIED

GENERAL NOTES

1. THE "L" DISTANCE EQUALS:  

SPEED LIMIT	FORMULAS
45 mph (80 km/h) OR GREATER:	METRIC ENGLISH
	$L=0.65(W)(S)$ $L=(W)(S)$

W = WIDTH OF OFFSET IN FEET (METERS)  
 S = NORMAL POSTED SPEED MPH (KM/H)
2. PLASTIC DRUMS WITH HIGH PERFORMANCE REFLECTIVE SHEETING AND STEADY BURNING LIGHTS ARE REQUIRED FOR ALL NIGHTTIME CLOSURES.
3. ALL SIGNS SHALL BE POST MOUNTED IF THE CLOSURE TIME EXCEEDS FOUR DAYS.
4. FLASHING LIGHTS SHALL BE USED DURING THE HOURS OF DARKNESS AND SHALL BE INSTALLED ABOVE THE FIRST TWO SETS OF SIGNS.

5. THE IMPACT ATTENUATOR, TEMPORARY IS NOT REQUIRED WHEN THE TEMPORARY CONCRETE BARRIER WALL IS PROTECTED BY OR IS TIED INTO THE EXISTING GUARDRAIL. IF OFFSET IS LESS THAN 5 FEET USE NARROW USE TYPE DEVICE TO MEET NCHRP350/MASH.
6. AUTHORIZATION FROM THE DISTRICT'S BUREAU OF TRAFFIC IS REQUIRED FOR ALL FREEWAY CLOSURES.
7. THE FLAGGER AND FLAGGER SIGN ARE REQUIRED AT THE ABOVE WORK SITES WHEN:
  - a. FOUR OR MORE WORK VEHICLES ENTER THE TRAFFIC LANES IN A ONE HOUR PERIOD.
  - b. THE WORK ACTIVITY REQUIRES FREQUENT ENCROACHMENT INTO THE LANE OPEN TO TRAFFIC.
 THE FLAGGER SHALL BE STATIONED APPROXIMATELY 100' (30 m) TO 200' (60 m) IN ADVANCE OF THE WORKERS.
8. 12' MIN. WIDTH TANGENT SECTION  
 16' MIN. WIDTH CURVE SECTION.

ARRAY DESIGN PER MANUFACTURER TO BE NCHRP 350/MASH COMPLIANT.

DETAIL "A"  
 IMPACT ATTENUATOR, TEMPORARY  
 (SEE NOTE 5)

ALL DIMENSIONS ARE IN INCHES (MILLIMETERS) UNLESS OTHERWISE SHOWN.

FILE NAME =	USER NAME = diazo	DESIGNED -	REVISED - J.A.F. 12-06
pw\1\084EBIDINTEG\illinois.gov\PIDOT\Documents\DOT Offices\District 1\Projects\DI286\Drawings\Design\DWG\Std.dgn		CHECKED -	REVISED - S.P.B. 01-07
		DATE - 11-96	REVISED - S.P.B. 12-09
			REVISED - M.D. 06-13

STATE OF ILLINOIS  
 DEPARTMENT OF TRANSPORTATION

TRAFFIC CONTROL DETAILS FOR FREEWAY  
 SHOULDER CLOSURES AND PARTIAL RAMP CLOSURES

SCALE: NONE SHEET NO. 1 OF 1 SHEETS STA. TO STA.

F.A. RTE.	SECTION	COUNTY	TOTAL SHEETS	SHEET NO.
VAR.	2017-017I	COOK	21	20
TC-17		CONTRACT NO. 62F36		
FED. ROAD DIST. NO. 1 ILLINOIS FED. AID PROJECT				





**NOTES:**

1. USE BLACK LETTERING ON ORANGE BACKGROUND.
2. ERECT SIGNS IN ADVANCE OF THE LOCATION FOR THE "ROAD CONSTRUCTION AHEAD" SIGN AT LOCATIONS AS DIRECTED BY THE ENGINEER.
3. ERECT SIGN ① WITH INSTALLED PANEL ② ONE WEEK PRIOR TO THE START OF CONSTRUCTION.
4. REMOVE PANEL ② SOON AFTER THE START OF CONSTRUCTION.
5. SEE SPECIAL PROVISION FOR "TEMPORARY INFORMATION SIGNING" FOR ADDITIONAL INFORMATION.
6. ONE SIGN ASSEMBLY EQUALS 25.70 SQ. FT. (2.3 SQ. M.)
7. SHALL BE PAID FOR AS TEMPORARY INFORMATION SIGNING.

ALL DIMENSIONS ARE IN INCHES (MILLIMETERS) UNLESS OTHERWISE SHOWN.

FILE NAME =	USER NAME = diazo	DESIGNED -	REVISED - R. MIRS 09-15-97
p:\11\084EBIDINTEG.illinois.gov\PIWIDOT\Documents\DOT Offices\District 1\Projects\DI286\Drawings\Design\DistStd.dgn		CHECKED -	REVISED - R. MIRS 12-11-97
		PLOT SCALE = 100.0000' / 1in.	REVISED - T. RAMMACHER 02-02-99
		PLOT DATE = 8/24/2017	REVISED - C. JUCIUS 01-31-07

**STATE OF ILLINOIS  
DEPARTMENT OF TRANSPORTATION**

**ARTERIAL ROAD  
INFORMATION SIGN**

SCALE: NONE SHEET NO. 1 OF 1 SHEETS STA. TO STA.

F.A. RTE.	SECTION	COUNTY	TOTAL SHEETS	SHEET NO.
VAR.	2017-017I	COOK	21	21
TC-22		CONTRACT NO. 62F36		
FED. ROAD DIST. NO. 1   ILLINOIS   FED. AID PROJECT				