

19

STATE OF ILLINOIS
DEPARTMENT OF TRANSPORTATION
DIVISION OF HIGHWAYS

PLANS FOR PROPOSED HIGHWAY

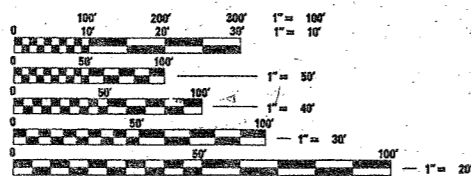
FOR INDEX OF SHEETS, SEE SHEET NO. 2

IMPROVEMENT LOCATED IN
THE VILLAGE OF GURNEE AND
THE CITIES OF WAUKEGAN AND
PARK CITY

FAP 342 - IL ROUTE 120 (BELVIDERE ROAD)
SECTION: (G&12) 1-RS-1
ALMOND ROAD TO GREENLEAF STREET
RESURFACING (MAINTENANCE), BRIDGE
REHABILITATION AND LOOP DETECTORS
LAKE COUNTY
C-91-355-96

STRUCTURE INFORMATION

STA. 350+63 LENGTH = 31.6 FT S.N. = 049-0044	STA. 367+16.86 LENGTH = 175.0 FT S.N. = 049-0046	STA. 461+95.54 LENGTH = 157.7 FT S.N. = 049-0048	STA. 461+96.29 (ONRAMP FROM GREENLEAF TO WB IL 120) LENGTH = 158.1 FT S.N. = 049-0129	STA. 473+43.17 LENGTH = 143.4 FT S.N. = 049-0125	STA. 367+16.86 LENGTH = 175.0 FT S.N. = 049-0047	STA. 461+95.54 LENGTH = 157.7 FT S.N. = 049-0049	STA. 461+96.29 (OFFRAMP FROM EB IL 120 TO GREENLEAF) LENGTH = 158.1 FT S.N. = 049-0130	STA. 473+43.17 LENGTH = 143.4 FT S.N. = 049-0126
N.W. RAMP IL 120 & IL 21 LENGTH = 29.5 FT S.N. = 049-0053								



FULL SIZE PLANS HAVE BEEN PREPARED USING STANDARD
ENGINEERING SCALES, REDUCED SIZED PLANS WILL NOT
CONFORM TO STANDARD SCALES, IN MAKING MEASUREMENTS
ON REDUCED PLANS, THE ABOVE SCALES MAY BE USED.

J.U.L.I.E.
JOINT UTILITY LOCATION INFORMATION FOR EXCAVATION
800-892-0123

CONTRACT NO. 60183

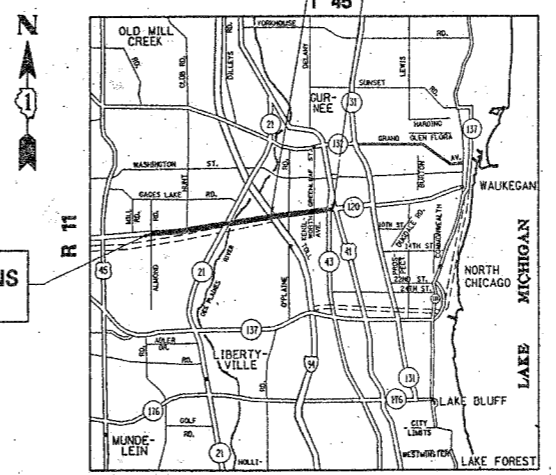
DIST. 1 DESIGN - PLAN PREP ENGINEER : KEN ENG /MANNY GOMEZ (847) 705-4432

049-0047

OMISSION
STA. 414+40 TO
STA. 416+53.5

IMPROVEMENT ENDS
STA. 499+07

IMPROVEMENT BEGINS
STA. 259+95



WARREN TOWNSHIP

4247

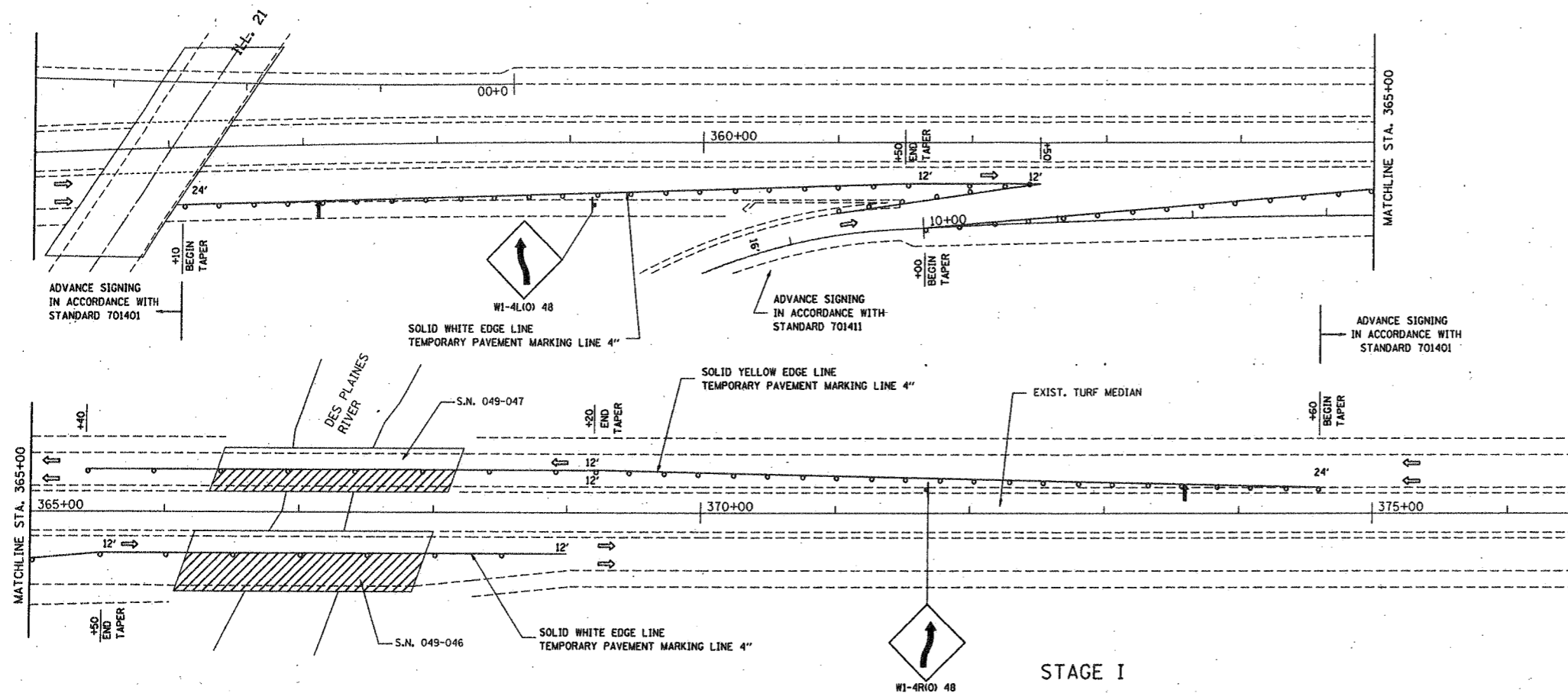
ADT (1996)

ALMOND RD TO HUNT CLUB RD	25,000
HUNT CLUB RD TO IL 21	27,600
IL 21 TO I 94	30,500
I 94 TO GREENLEAF ST	33,000

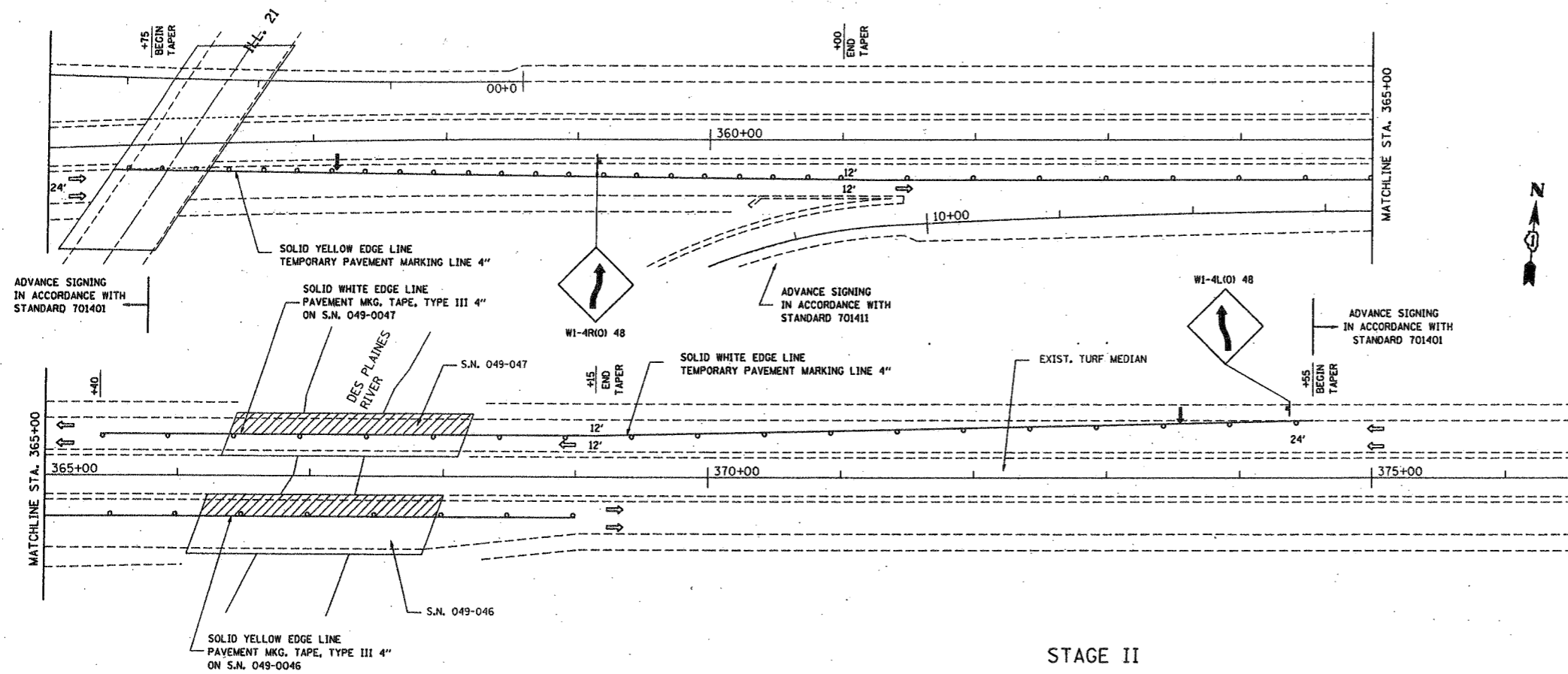
POSTED SPEED LIMITS = 50
55

GROSS LENGTH: 22,947 FEET = 4.346 MILES
NET LENGTH: 22,947 FEET = 4.346 MILES

F.A.P. RTE.	SECTION	COUNTY	TOTAL SHEETS	SHEET NO.
342	IG&121-RS-1	LAKE	66	14
STA. 355+00		TO STA. 376+50		
FED. ROAD DIST. NO. 1		ILLINOIS FED. AID PROJECT		



STAGE I



STAGE II

LEGEND

- ↑ ARROW BOARD
- ↑ TRAFFIC FLOW
- ↑ SIGN
- DRUM WITH STEADY BURNING MONODIRECTION LIGHT @ 50' CTS. 25' CTS IN TAPERS AND ON CURVES
- ▨ WORK AREA

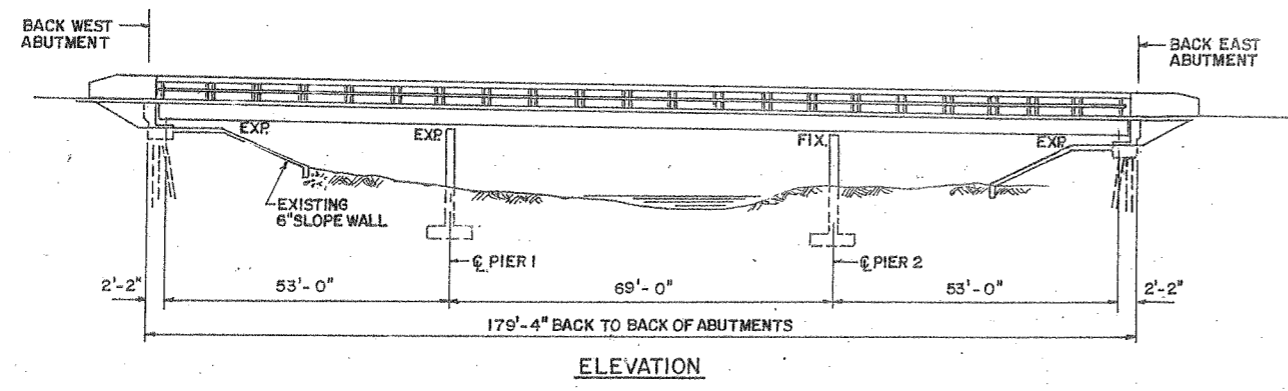
REVISIONS	
NAME	DATE

ILLINOIS DEPARTMENT OF TRANSPORTATION
 ILL. 120 (ALMOND RD. TO GREENLEAF ST.)
 OVER DES PLAINES RIVER
 S.N. 049-0046 AND S.N. 049-0047
 STAGE I & II PLANS

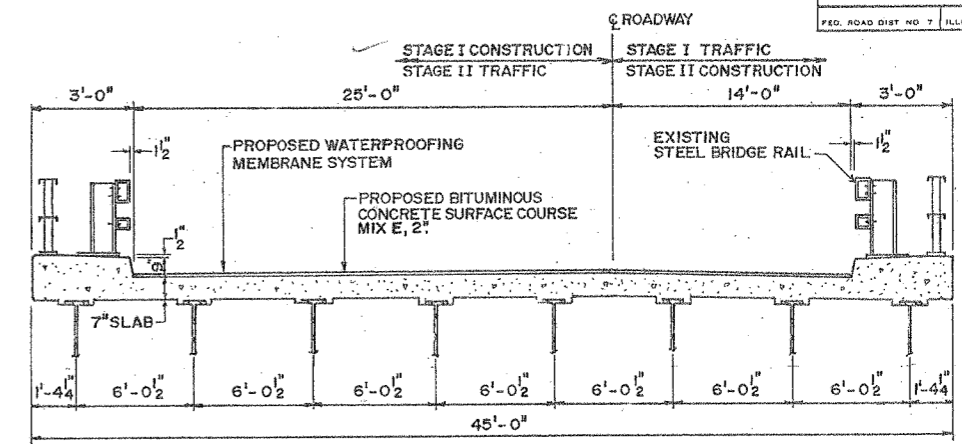
SCALE: VERT. 1" = 50'
 HORIZ. DATE 1/17/01

DRAWN BY
 CHECKED BY

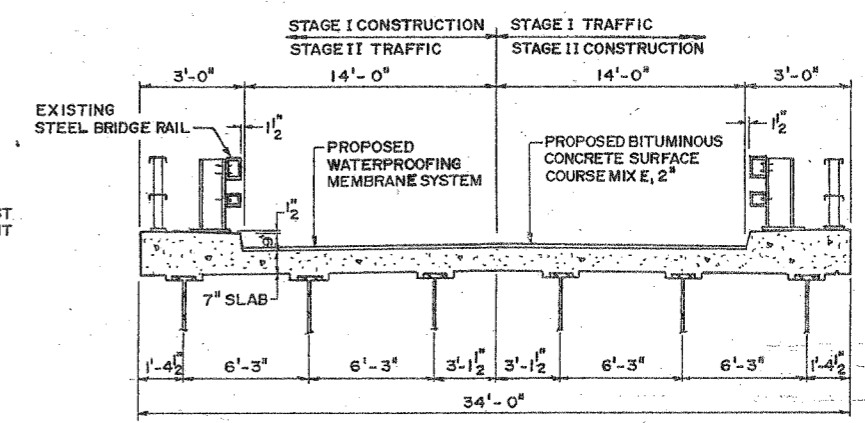
F. & A. STA.	SECTION	COUNTY	TOTAL SHEETS	SHEET NO.
342 (G&I2)-RS-	LAKE	66	34	
STA. TO STA.		FED. ROAD DIST. NO. 7 ILLINOIS		
FED. AID PROJECT				



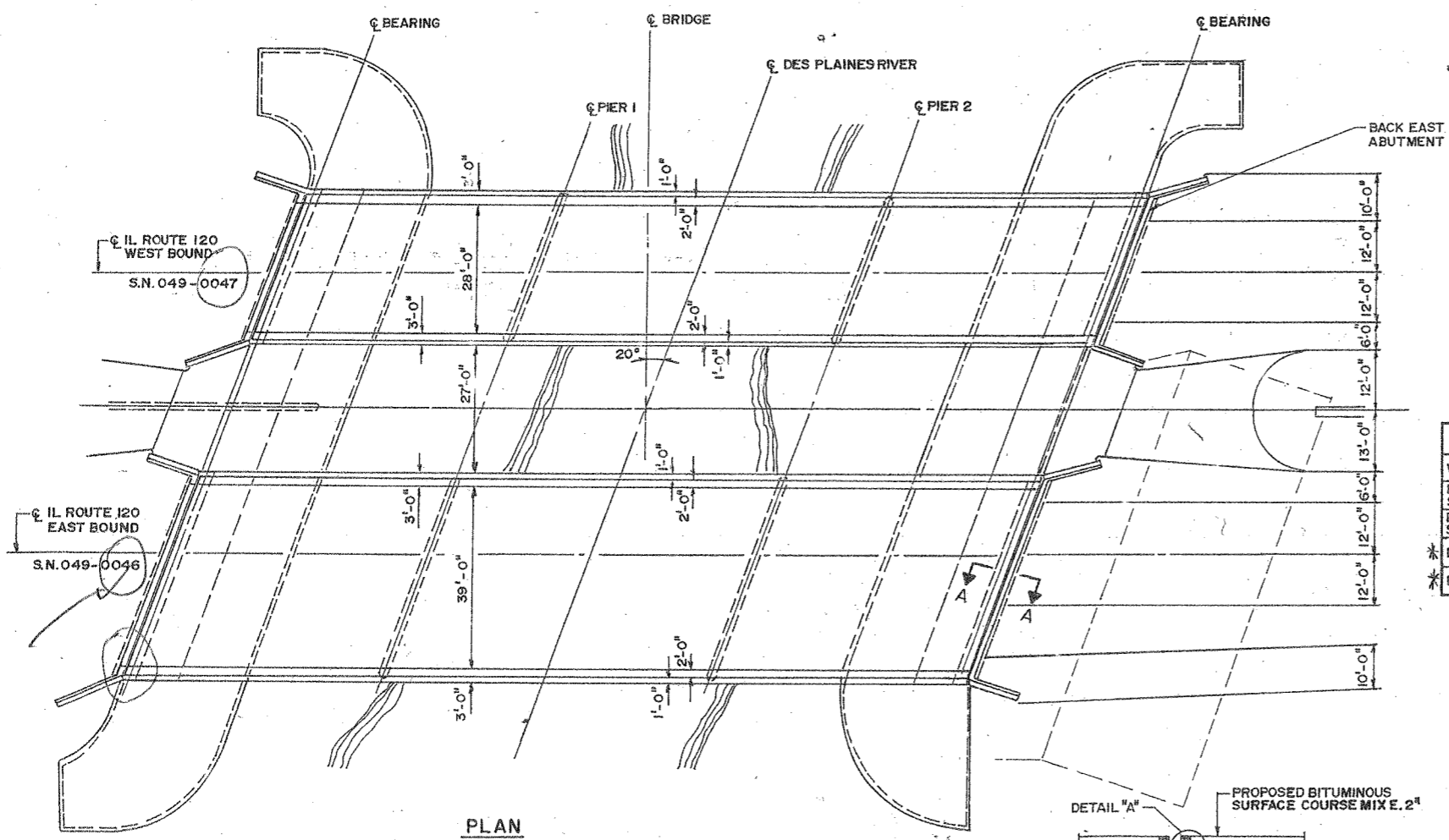
ELEVATION



CROSS SECTION
EAST BOUND BRIDGE



CROSS SECTION
WEST BOUND BRIDGE

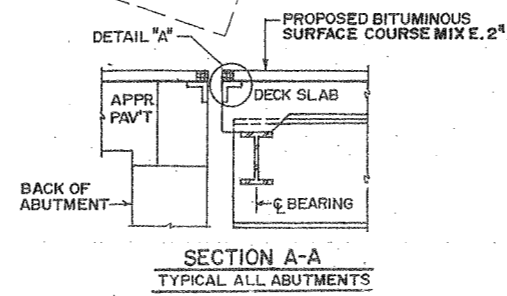


PLAN

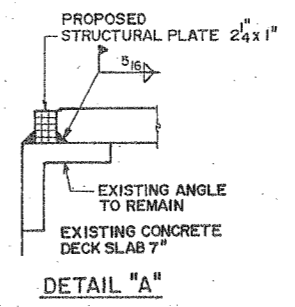
TOTAL-BILL OF MATERIAL

ITEM	UNIT	QUANTITY
WATERPROOFING MEMBRANE SYSTEM	SQ. YDS	1335
FURNISHING AND ERECTING STRUCTURAL STEEL	POUND	2190
POLYMERIZED BITUMINOUS CONCRETE SURFACE COURSE, SUPERPAVE, MIX "E" N90	TON	174
* DECK SLAB REPAIR (PARTIAL)	SQ. YDS	60
* DECK SLAB REPAIR (FULL DEPTH, TYPE I)	SQ. YDS	15

NOTES:
 PLAN DIMENSIONS AND DETAILS RELATIVE TO THE EXISTING STRUCTURE HAVE BEEN TAKEN FROM EXISTING PLANS AND ARE SUBJECT TO NOMINAL CONSTRUCTION VARIATIONS. IT SHALL BE THE CONTRACTOR'S RESPONSIBILITY TO VERIFY SUCH DIMENSION AND DETAILS IN THE FIELD AND MAKE NECESSARY APPROVED ADJUSTMENTS PRIOR TO CONSTRUCTION OR ORDERING OF MATERIAL. SUCH VARIATION SHALL NOT BE CAUSE FOR ADDITIONAL COMPENSATION FOR A CHANGE IN THE SCOPE, HOWEVER, THE CONTRACTOR WILL BE PAID FOR THE QUANTITY ACTUALLY FURNISHED AT THE UNIT BID PRICE OR THE WORK.
 STRUCTURAL STEEL SHALL CONFORM TO THE REQUIREMENTS OF AASHTO M - 270 GRADE 36.
 * DECK REPAIRS ARE ESTIMATED ACTUAL QUANTITIES AND LOCATIONS TO BE DETERMINED BY THE ENGINEER AND SHALL BE INCORPORATED IN THE AS-BUILT PLANS.



SECTION A-A
TYPICAL ALL ABUTMENTS



DETAIL "A"

REVISIONS

NAME	DATE
Thomas M. Slattery	5/1999

ILLINOIS DEPARTMENT OF TRANSPORTATION
 IL 120 (EASTBOUND AND WESTBOUND)
 OVER DES PLAINES RIVER
 PLAN, ELEVATION, CROSS SECTIONS
 AND DETAILS
 S.N. 049-0046 AND S.N. 049-0047
 SCALE: VERT. DRAWN BY MVT
 HORIZ. CHECKED BY TMS
 DATE: FEBRUARY, 1999