

STATE OF ILLINOIS
DEPARTMENT OF TRANSPORTATION
DIVISION OF HIGHWAYS

FAP RTE.	SECTION	COUNTY	TOTAL SHEETS	SHEET NO.
342	(G&12) 1-RS-1	LAKE	66	1

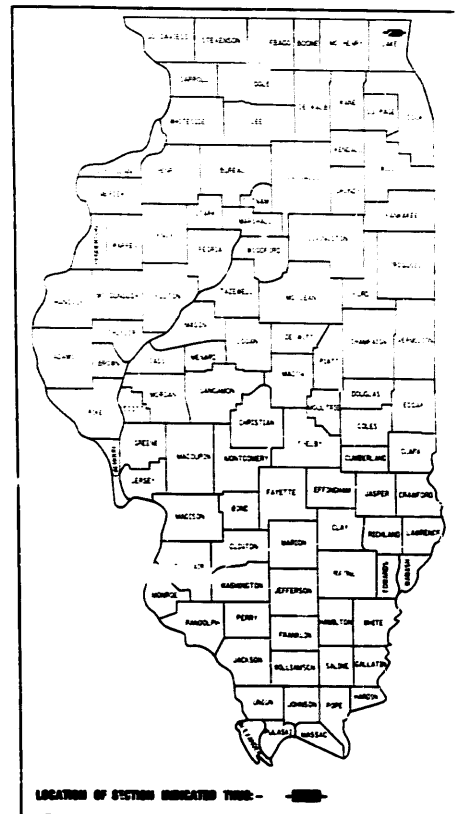
D-91-355-96

PLANS FOR PROPOSED HIGHWAY

FOR INDEX OF SHEETS, SEE SHEET NO. 2

IMPROVEMENT LOCATED IN
THE VILLAGE OF GURNEE AND
THE CITIES OF WAUKEGAN AND
PARK CITY

FAP 342 - IL ROUTE 120 (BELVIDERE ROAD) SECTION: (G&12) 1-RS-1 ALMOND ROAD TO GREENLEAF STREET RESURFACING (MAINTENANCE), BRIDGE REHABILITATION AND LOOP DETECTORS LAKE COUNTY C-91-355-96

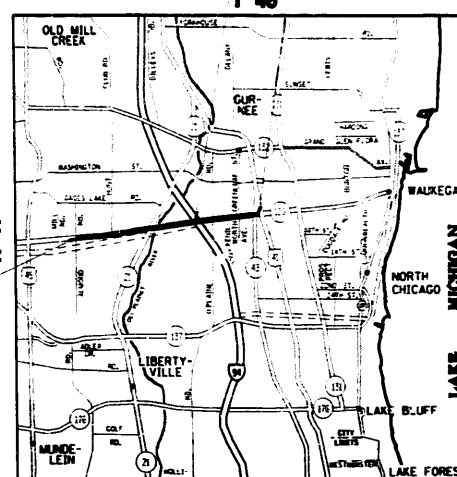


STRUCTURE INFORMATION

STA. 350+63 LENGTH = 31.6 FT S.N. = 049-0044	STA. 367+16.86 LENGTH = 175.0 FT S.N. = 049-0046	STA. 367+16.86 LENGTH = 175.0 FT S.N. = 049-0047
STA. 461+95.54 LENGTH = 157.7 FT S.N. = 049-0048	STA. 461+95.54 LENGTH = 157.7 FT S.N. = 049-0049	
STA. 461+96.29 (ONRAMP FROM GREENLEAF TO WB IL 120) LENGTH = 158.1 FT S.N. = 049-0129	STA. 461+96.29 (OFFRAMP FROM EB IL 120 TO GREENLEAF) LENGTH = 158.1 FT S.N. = 049-0130	
STA. 473+43.17 LENGTH = 143.4 FT S.N. = 049-0125	STA. 473+43.17 LENGTH = 143.4 FT S.N. = 049-0126	
N.W. RAMP IL 120 & IL 21 LENGTH = 29.5 FT S.N. = 049-0053		

OMISSION
STA. 414+40 TO
STA. 416+83.5

IMPROVEMENT ENDS
STA. 499+07

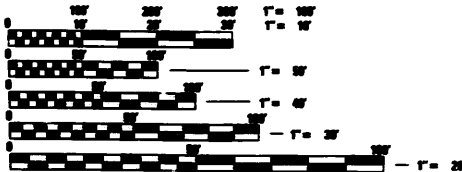


IMPROVEMENT BEGINS
STA. 259+95

ADT (1996)

ALMOND RD TO HUNT CLUB RD	25,000
HUNT CLUB RD TO IL 21	27,600
IL 21 TO I 94	30,500
I 94 TO GREENLEAF ST	33,000

POSTED SPEED LIMITS = 50 MPH
55 MPH



FULL SIZE PLANS HAVE BEEN PREPARED USING STANDARD
ENGINEERING SCALES. REDUCED SIZE PLANS WILL NOT
CONFORM TO STANDARD SCALES. IN MAKING MEASUREMENTS
ON REDUCED PLANS, THE ABOVE SCALES MAY BE USED.

J.B.L.L.E.
JOINT UTILITY LOCATION INFORMATION FOR EXCAVATION
308-882-9123

CONTRACT NO. 60183

GROSS LENGTH: 22,947 FEET = 4.346 MILES
NET LENGTH: 22,947 FEET = 4.346 MILES

STATE OF ILLINOIS
DEPARTMENT OF TRANSPORTATION
DIVISION OF HIGHWAYS

SUBMITTED December 19, 2000

James P. Hill DISTRICT ENGINEER

February 2, 2001
Michael Hill
ENGINEER OF DESIGN AND ENVIRONMENT

February 2, 2001
James R. St. John
DIRECTOR, DIVISION OF HIGHWAYS

PRINTED BY AUTHORITY OF THE
STATE OF ILLINOIS

DIST. 1 DESIGN - PLAN PREP ENGINEER : KEN ENG /MANNY GOMEZ (847) 705-4432

INDEX OF SHEETS:

SHEET NO.	DESCRIPTION:
1	COVER SHEET
2	INDEX OF SHEETS, STANDARDS, AND GENERAL NOTES
3-5	SUMMARY OF QUANTITIES
6-8	TYPICAL SECTIONS
9-18	STAGING AND TRAFFIC CONTROL PLANS
19-28	PLAN SHEETS
29-30	TRAFFIC SIGNAL
31-44	BRIDGE AND STRUCTURE PLANS
45	OUTLET FOR CONCRETE CURB & GUTTER TYPE M-2.12
46	PROPOSED JOINT REPAIR DETAILS
47	PAVEMENT PATCHING FOR BITUMINOUS SURFACE PAVEMENT
48	BUTT JOINT AND BITUMINOUS TAPER DETAILS
49	TRAFFIC CONTROL AND PROTECTION FOR SIDE ROADS, INTERSECTIONS, AND DRIVEWAYS
50	TYPICAL APPLICATIONS RAISED REFLECTIVE PAVEMENT MARKERS (SNOW-PLOW RESISTANT)
51-52	MULTI-LANE FREEWAY PAVEMENT MARKING DETAILS
53	DISTRICT ONE TYPICAL PAVEMENT MARKINGS
54	TRAFFIC CONTROL AND PROTECTION AT TURN BAYS (TO REMAIN OPEN TO TRAFFIC)
55	TEMPORARY PAVEMENT MARKINGS, LETTERS AND SYMBOLS
56	TEMPORARY INFORMATION SIGNING
57	DETAILS FOR STEEL PLATE BEAM GUARD RAIL ADJACENT TO CURB AND GUTTER
58	STANDARD TRAFFIC SIGNAL DESIGN DETAILS
59	DETECTOR LOOP INSTALLATION DETAIL FOR ROADWAY RESURFACING
60-66	CROSS SECTIONS

STATE STANDARDS:

000001	STANDARD SYMBOLS, ABBREVIATIONS AND PATTERNS
001001	AREAS OF REINFORCEMENT BARS
061006	DECIMAL OF AN INCH AND OF A FOOT
285001	FABRIC FORMED CONCRETE REVETMENT MATS
420001	PAVEMENT JOINTS
442101	CLASS B PATCHES
442201	CLASS C AND D PATCHES
482006	BITUMINOUS SHOULDER DETAILS - ADJACENT TO RIGID PAVEMENT
602301	INLET, TYPE A
604086	FRAME AND GRATE, TYPE 23
604091	FRAME AND GRATE, TYPE 24
606001	CONCRETE CURB AND COMBINATION CONCRETE CURB AND GUTTER
606301	PC CONCRETE ISLANDS AND MEDIANS
606306	CORRUGATED PC CONCRETE MEDIANS
630001	STEEL PLATE BEAM GUARDRAIL
631026	TRAFFIC BARRIER TERMINAL, TYPE 5 AND 5A
635006	REFLECTOR AND TERMINAL MARKER PL CEMENT
635011	REFLECTOR MARKER AND MOUNTING DETAILS
701101	OFF-ROAD MOVING OPERATIONS, MULTILANE, LESS THAN 4.5 m (15') AWAY, SPEEDS ≥ 45 MPH
701106	OFF-ROAD OPR., MULTILANE, MORE THAN 4.5 m (15') AWAY, FOR SPEEDS ≥ 45 MPH
701401	LANE CLOSURE, MULTILANE, FOR SPEEDS ≥ 45 MPH
701402	LANE CLOSURE, MULTILANE, WITH BARRIER
701406	LANE CLOSURE, MULTILANE, DAY OPERATIONS ONLY, FOR SPEEDS ≥ 45 MPH
701411	LANE CLOSURE, MULTILANE, AT ENTRANCE OR EXIT RAMP, FOR SPEEDS ≥ 45 MPH
701426	LANE CLOSURE, MULTILANE, INTERMITTENT OR MOVING OPERATION, FOR SPEEDS ≥ 45 MPH
792001	TRAFFIC CONTROL DEVICES
794001	TEMPORARY CONCRETE BARRIER
798001	TYPICAL PAVEMENT MARKINGS
846001	DETECTOR LOOP INSTALLATIONS
846006	TYPICAL LAYOUT FOR DETECTION LOOPS

GENERAL NOTES:

- BEFORE STARTING ANY EXCAVATION, THE CONTRACTOR SHALL CALL "TOLLIE" AT 800-892-0123 FOR FIELD LOCATIONS OF BURIED ELECTRIC, TELEPHONE, AND GAS FACILITIES. (48 HOUR NOTIFICATION REQUIRED)
- THE CONTRACTOR SHALL COORDINATE CONSTRUCTION ACTIVITIES WITH UTILITY COMPANIES.
- THE CONTRACTOR WILL NOT BE ABLE TO SET UP A YARD OR FIELD OFFICE ON STATE PROPERTY WITHOUT WRITTEN PERMISSION FROM THE DEPARTMENT.
- BARRICADES: THE CONTRACTOR SHALL PROVIDE AND INSTALL TWO (2) WEIGHTED SANDBAGS ON EACH TYPE I OR TYPE II BARRICADE USED. (ONE (1) WEIGHTED SANDBAG ACROSS EACH BOTTOM RAIL)
- WHEN MILLED PAVEMENT IS OPEN TO TRAFFIC THE MAXIMUM GRADE DIFFERENTIAL BETWEEN PASSES OF THE MILLING MACHINE SHALL NOT EXCEED 1/2 INCHES WHERE THE SPEED LIMIT IS 45 MPH OR LESS, AND 1 INCH WHERE THE SPEED LIMIT IS GREATER THAN 45 MPH. WITH WRITTEN APPROVAL FROM THE RESIDENT ENGINEER, A MAXIMUM GRADE DIFFERENTIAL OF 3 INCHES MAY BE ALLOWED IF THE EDGE OF THE MILLING IS SLOPED A MINIMUM 1:3 (V:H)
- BUTT JOINTS WILL BE INSTALLED AT THE ENDS OF ALL RESURFACING (WHERE RESURFACING MEETS EXISTING PAVEMENT), IN ACCORDANCE WITH THE "BUTT JOINT AND BITUMINOUS TAPER DETAILS" SHEET INCLUDED IN THE PLANS, UNLESS OTHERWISE SPECIFIED.
- CONTACT Ms DEBBIE HANLON AREA TRAFFIC FIELD ENGINEER AT (847)705-4091 TWO WEEKS PRIOR TO INSTALLATION OF FINAL PAVEMENT MARKINGS
- 6' X 12" CLASS "D" PATCHING IS PROVIDED TO REMOVE EXIST. RELIEF JOINT IN EXISTING 10" PCC JOINT PAVEMENT.
- DISTRICT DETAIL TC-12 APPLIED ONLY TO GORE AREAS. ALL OTHER PAVEMENT MARKING SHALL BE INSTALLED IN ACCORDENCE WITH TC-13.

COMMITMENT

DUE TO THE PRESENCE OF THREATENED AND ENDANGERED SPECIES IN THE VICINITY OF THE SMALL STREAM AT STATION 350+63 (STRUCTURE NUMBERS 049-0044 AND 049-0045), THE CONTRACTOR WILL NOT BE ALLOWED TO WORK OR MOVE EQUIPMENT IN THIS STREAM.

REVISIONS	
NAME	DATE

ILLINOIS DEPARTMENT OF TRANSPORTATION
INDEX OF SHEETS, STANDARDS, &
GENERAL NOTES

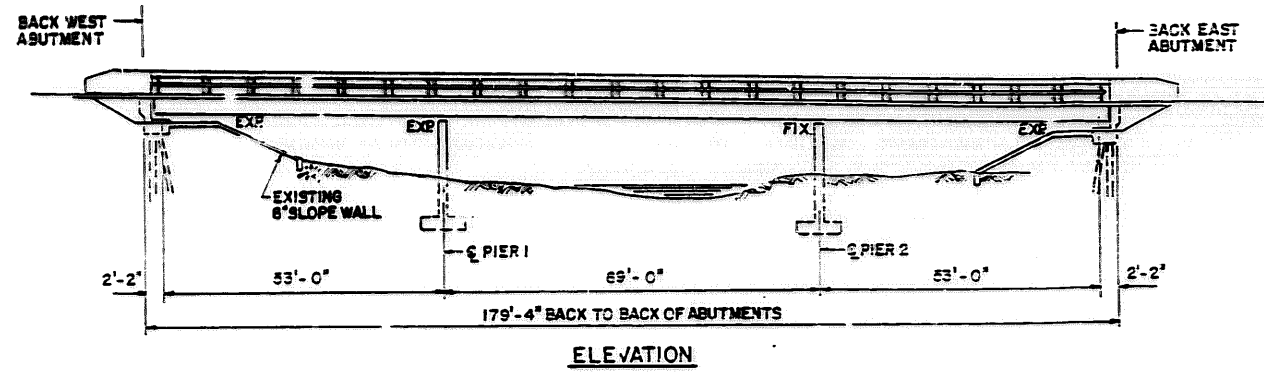
ILL 120
(AL MOND RD. TO GREENLEAF ST.)

SCALE _____ DRAWN BY _____
DATE _____ CHECKED BY _____

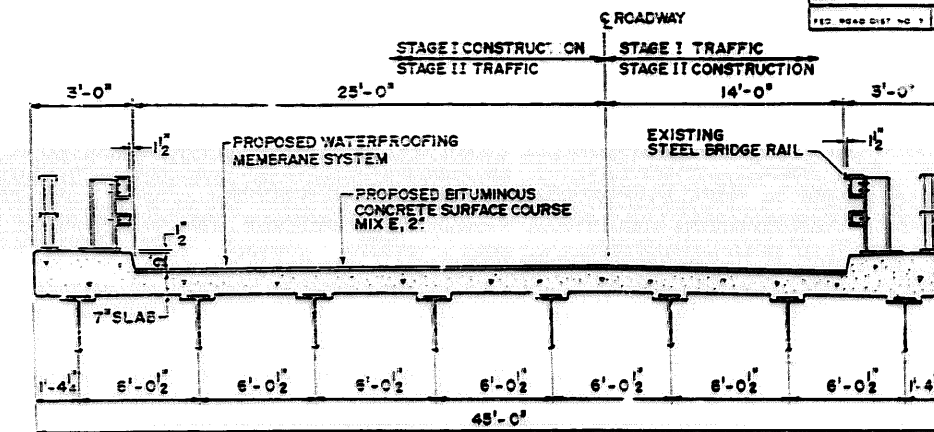


SHEET 31 OF 31

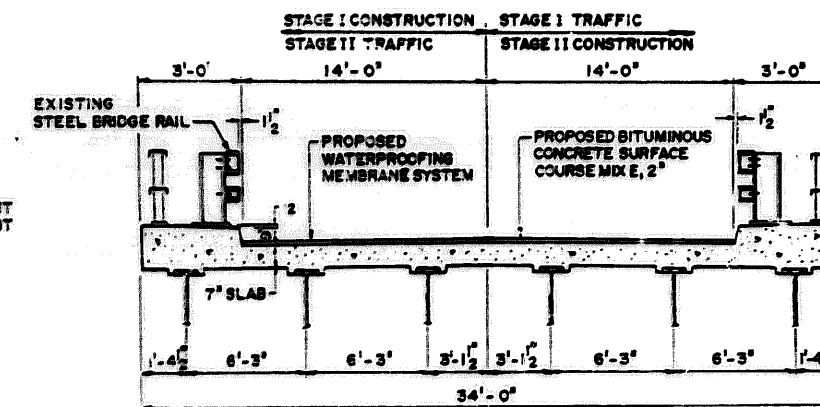
SECTION	COUNT	TOTAL SHEETS	SHEET NO.
342 (GB2) RS4 LAKE		66	34
STA	TO STA		
FED. ROAD DIST. NO. 1	ILL. NO. 1	FED. AID PROJECT	



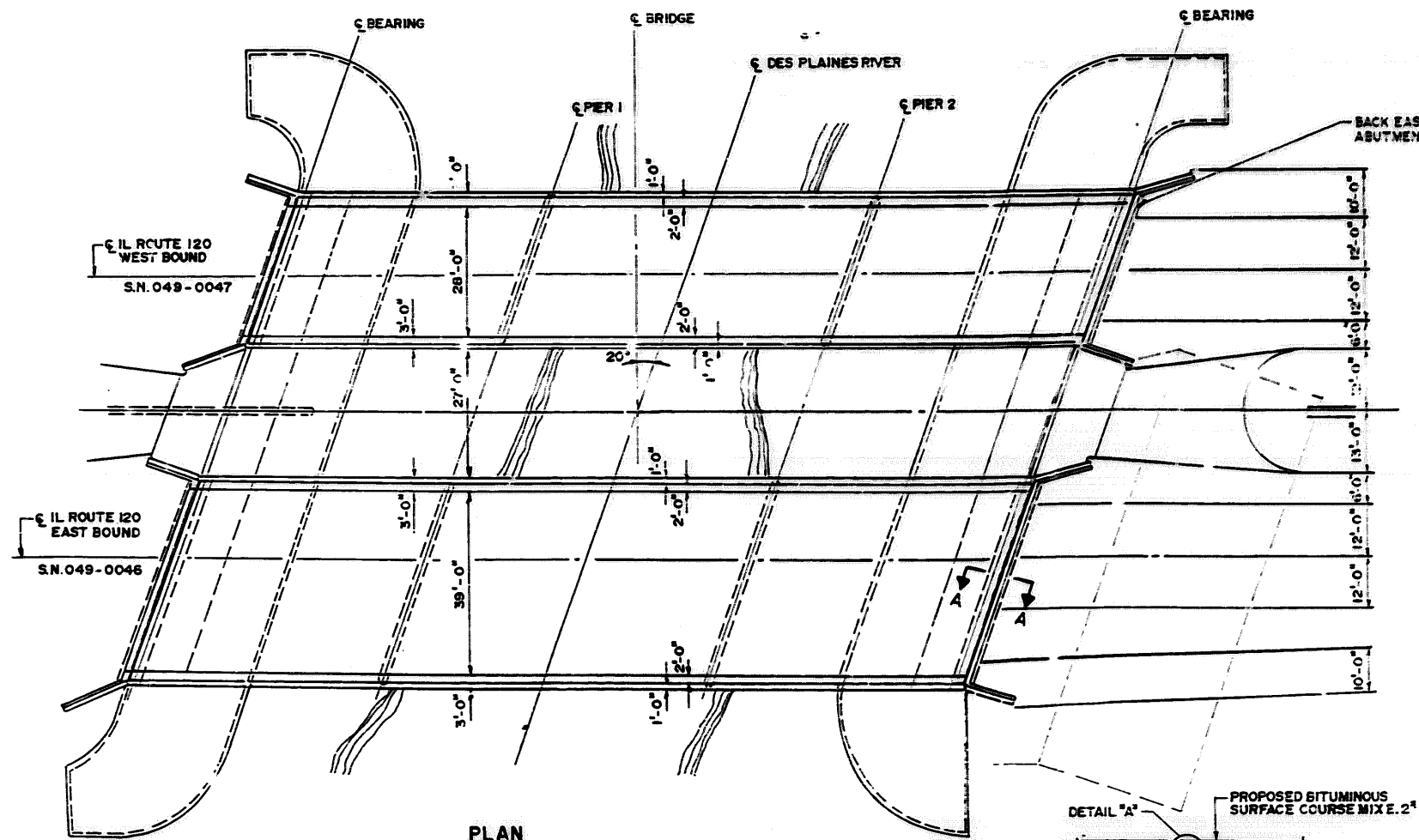
ELEVATION



CROSS SECTION
EAST BOUND BRIDGE



CROSS SECTION
WEST BOUND BRIDGE



PLAN

TOTAL-BILL OF MATERIAL

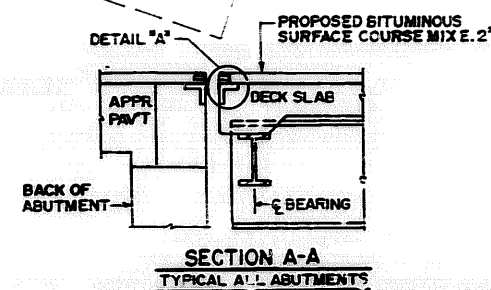
ITEM	UNIT	QUANTITY
WATERPROOFING MEMBRANE SYSTEM	SQ. YDS.	1535
FURNISHING AND ERECTING STRUCTURAL STEEL	POUND	2190
POLYMERIZED BITUMINOUS CONCRETE SURFACE COURSE SUPERPAVE MIX "E" N90	TON	174
DECK SLAB REPAIR (PARTIAL)	SQ. YDS.	60
DECK SLAB REPAIR (FULL DEPTH, TYPE I)	SQ. YDS.	15

NOTES:

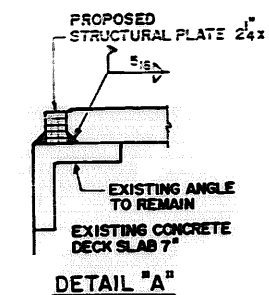
PLAN DIMENSIONS AND DETAILS RELATIVE TO THE EXISTING STRUCTURE HAVE BEEN TAKEN FROM EXISTING PLANS AND ARE SUBJECT TO NORMAL CONSTRUCTION VARIATIONS. IT SHALL BE THE CONTRACTOR'S RESPONSIBILITY TO VERIFY SUCH DIMENSION AND DETAILS IN THE FIELD AND MAKE NECESSARY APPROVED ADJUSTMENTS PRIOR TO CONSTRUCTION OR ORDERING OF MATERIALS. SUCH VARIATION SHALL NOT BE CAUSE FOR ADDITIONAL COMPENSATION FOR A CHANGE IN THE SCOPE, HOWEVER, THE CONTRACTOR WILL BE PAID FOR THE QUANTITY ACTUALLY FURNISHED AT THE UNIT BID PRICE OR THE WORK.

STRUCTURAL STEEL SHALL CONFORM TO THE REQUIREMENTS OF AASHTO M-270 GRADE 36.

DECK REPAIRS ARE ESTIMATED ACTUAL QUANTITIES AND LOCATIONS TO BE DETERMINED BY THE ENGINEER AND SHALL BE INCORPORATED IN THE AS-BUILT PLANS.



SECTION A-A
TYPICAL AT ABUTMENTS



DETAIL "A"

REVISIONS	
NAME	DATE
Thomas M. Stonery	5/1999

ILLINOIS DEPARTMENT OF TRANSPORTATION
 IL 120 (EASTBOUND AND WESTBOUND)
 OVER DES PLAINES RIVER
 PLAN, ELEVATION, CROSS SECTIONS
 AND DETAILS
 S.N. 049-0046 AND S.N. 049-0047
 SCALE: VERT. 5:1
 HORIZ. 1" = 100'
 DATE: FEBRUARY, 1999
 DRAWN BY: MYT
 CHECKED BY: TMS