

PAY ITEM NUMBER	DESIGNATION	UNIT	URBAN TOTAL QUANTITY	CONSTRUCTION CODE			
				0005 ROADWAY		0021 TRAFFIC SIGNAL	0059 BRIDGE
				80% FEDERAL 20% STATE	100% STATE	80% FEDERAL 20% STATE	80% FEDERAL 20% STATE
70306120	TEMPORARY PAVEMENT MARKING - LINE 4" - TYPE III TAPE	FOOT	1,889	1,889			
* 78000100	THERMOPLASTIC PAVEMENT MARKING - LETTERS AND SYMBOLS	SQ FT	2,519	2,519			
* 78000200	THERMOPLASTIC PAVEMENT MARKING - LINE 4"	FOOT	43,732	43,732			
* 78000400	THERMOPLASTIC PAVEMENT MARKING - LINE 6"	FOOT	8,078	8,078			
* 78000500	THERMOPLASTIC PAVEMENT MARKING - LINE 8"	FOOT	2,159	2,159			
* 78000600	THERMOPLASTIC PAVEMENT MARKING - LINE 12"	FOOT	1,599	1,599			
* 78000650	THERMOPLASTIC PAVEMENT MARKING - LINE 24"	FOOT	231	231			
* 78009000	MODIFIED URETHANE PAVEMENT MARKING - LETTERS AND SYMBOLS	SQ FT	110	110			
* 78009004	MODIFIED URETHANE PAVEMENT MARKING - LINE 4"	FOOT	3,297	3,297			
* 78009006	MODIFIED URETHANE PAVEMENT MARKING - LINE 6"	FOOT	1,335	1,335			
* 78009008	MODIFIED URETHANE PAVEMENT MARKING - LINE 8"	FOOT	134	134			
* 78009012	MODIFIED URETHANE PAVEMENT MARKING - LINE 12"	FOOT	13	13			
* 78009024	MODIFIED URETHANE PAVEMENT MARKING - LINE 24"	FOOT	145	145			
* 78100100	RAISED REFLECTIVE PAVEMENT MARKER	EACH	1,592	1,592			
78300200	RAISED REFLECTIVE PAVEMENT MARKER REMOVAL	EACH	1,592	1,592			
* 78300202	PAVEMENT MARKING REMOVAL - WATER BLASTING	SQ FT	2,122	2,122			
* 81028200	UNDERGROUND CONDUIT, GALVANIZED STEEL, 2" DIA.	FOOT	171		171		
81028240	UNDERGROUND CONDUIT, GALVANIZED STEEL, 4" DIA.	FOOT	232		232		
* 85000200	MAINTENANCE OF EXISTING TRAFFIC SIGNAL INSTALLATION	EACH	10		10		⚠
* 87301215	ELECTRIC CABLE IN CONDUIT, SIGNAL NO. 14 2C	FOOT	2,693		2,693		
87301245	ELECTRIC CABLE IN CONDUIT, SIGNAL NO. 14 5C	FOOT	1,050		1,050		
* 87301225	ELECTRIC CABLE IN CONDUIT, SIGNAL NO. 14 3C	FOOT	1,810		1,810		
87301305	ELECTRIC CABLE IN CONDUIT, LEAD-IN, NO. 14 1 PAIR	FOOT	6,700		6,700		⚠
* 87301900	ELECTRIC CABLE IN CONDUIT, EQUIPMENT GROUNDING CONDUCTOR, NO. 6 1C	FOOT	127		127		
* 87700200	STEEL MAST ARM, ASSEMBLY AND POLE, 32 FT	EACH	1		1		
* 87800400	CONCRETE FOUNDATION, TYPE E 30-INCH	FOOT	14		14		
* 87900200	DIAMETER DRILL EXISTING HANDHOLE	EACH	15		15		
* 88102717	PEDESTRIAN SIGNAL HEAD, LED, 1-FACE, BRACKET MOUNTED WITH COUNTDOWN TIMER	EACH	12		12		
* 88030020	SIGNAL HEAD, LED, I-FACE, 3-SECTION, MAST-ARM MOUNTED	EACH	2		2		

* = SPECIALTY ITEM

MODEL: Default
 FILE NAME: P:\2020-2024\4094-30 IDOT Various Phase 2 (P) 196 Item 16\W03_08_62131\DC\ICADD_Sheets\112137-SHT-500-06.dgn

⚠ REVISED SHEET 11/3/2023

INFRASTRUCTURE ENGINEERING <small>1 South Wacker Suite 2650 Chicago, IL 60606 P 312.425.9580 F 312.425.9584 www.infrastructure-eng.com</small>	USER NAME = ALane PLOT SCALE = 20.0000" / in.	DESIGNED - IMU DRAWN - IMU CHECKED - ACL DATE - 08/22/2023	REVISED - REVISED - REVISED -	STATE OF ILLINOIS DEPARTMENT OF TRANSPORTATION	SUMMARY OF QUANTITIES US-6 (CAROL AVE. TO TORRENCE AVE.)	F.A.P. RTE. 351 SECTION FAP 0351 22 RS COUNTY COOK TOTAL SHEETS 73 SHEET NO. 6	CONTRACT NO. 62T57 ILLINOIS FED. AID PROJECT
	SCALE:	STA.	TO STA.				

PAY ITEM NUMBER	DESIGNATION	UNIT	URBAN TOTAL QUANTITY	CONSTRUCTION CODE			
				0005 ROADWAY		0021 TRAFFIC SIGNAL	0059 BRIDGE
				80% FEDERAL 20% STATE	100% STATE	80% FEDERAL 20% STATE	80% FEDERAL 20% STATE
88030050	SIGNAL HEAD, LED, 1-FACE, 3-SECTION, BRACKET MOUNTED	EACH	1			1	
* 88600100	DETECTOR LOOP, TYPE I	FOOT	6,776			6,776	1
88200210	TRAFFIC SIGNAL BACKPLATE, LOUVERD, ALUMINUM	EACH	2			2	
* 89500200	RELOCATE EXISTING PEDESTRIAN SIGNAL HEAD	EACH	3			3	
* 88500100	INDUCTIVE LOOP DETECTOR	EACH	1			1	
* 89502350	REMOVE AND REINSTALL ELECTRIC CABLE FROM CONDUIT	FOOT	1,925			1,925	1
* 89502375	REMOVE EXISTING TRAFFIC SIGNAL EQUIPMENT	EACH	8			8	
* 89502376	REBUILD EXISTING HANDHOLE	EACH	1			1	
89502380	REMOVE EXISTING HANDHOLE	EACH	2			2	
K0029614	WEED CONTROL, AQUATIC	GALLON	1	1			
K0036120	MULCH PLACEMENT 4"	SQ YD	60	60			
X0320050	CONSTRUCTION LAYOUT (SPECIAL)	L SUM	1	1			
X0327611	REMOVE AND REINSTALL BRICK PAVER	SQ FT	204	204			
X0327989	REMOVE EXISTING BRICK PAVERS	EACH	483	483			
* X1400367	PEDESTRIAN SIGNAL POST, 10 FT.	EACH	5			5	
* X1400378	PEDESTRIAN SIGNAL POST, 5 FT.	EACH	8			8	
* X1400388	VIDEO VEHICLE DETECTION SYSTEM, SINGLE APPROACH	EACH	1			1	
X2503110	MOWING (SPECIAL)	ACRE	0.50	0.50			
X2510635	HEAVY DUTY EROSION CONTROL BLANKET, SPECIAL	SQ YD	1,350	1,350			
X2511630	EROSION CONTROL BLANKET (SPECIAL)	SQ YD	2,670	2,670			
X4400501	COMBINATION CURB AND GUTTER REMOVAL AND REPLACEMENT LESS THAN OR EQUAL TO 10 FEET	FOOT	1,350	1,350			
X4400503	COMBINATION CURB AND GUTTER REMOVAL AND REPLACEMENT GREATER THAN 10 FEET	FOOT	8,700	8,700			
X5537800	STORM SEWERS TO BE CLEANED 12"	FOOT	500		500		
X5538000	STORM SEWERS TO BE CLEANED 18"	FOOT	250		250		
X6030310	FRAMES AND LIDS TO BE ADJUSTED (SPECIAL)	EACH	108	108			
X6700407	ENGINEER'S FIELD OFFICE, TYPE A (D1)	CAL MO	12	12			
X8760200	ACCESSIBLE PEDESTRIAN SIGNALS	EACH	48			48	
X8780012	CONCRETE FOUNDATION, TYPE A 12-INCH DIAMETER	FOOT	52			52	
Z0001110	GAS VALVE TO BE ADJUSTED	EACH	1	1			

* = SPECIALTY ITEM

MODEL: Default
FILE NAME: P:\P\2020-4094-00 IDOT Various Phase 2 (P) 196 Item 16\W03_38_62131\DC\ICADD_Sheets\112137-SHT-500-05.dgn

1 REVISED SHEET 11/3/2023



USER NAME = ALane
DESIGNED - IMU
DRAWN - IMU
CHECKED - ACL
DATE - 08/22/2023
PLOT SCALE = 20.0000' / in.

STATE OF ILLINOIS
DEPARTMENT OF TRANSPORTATION

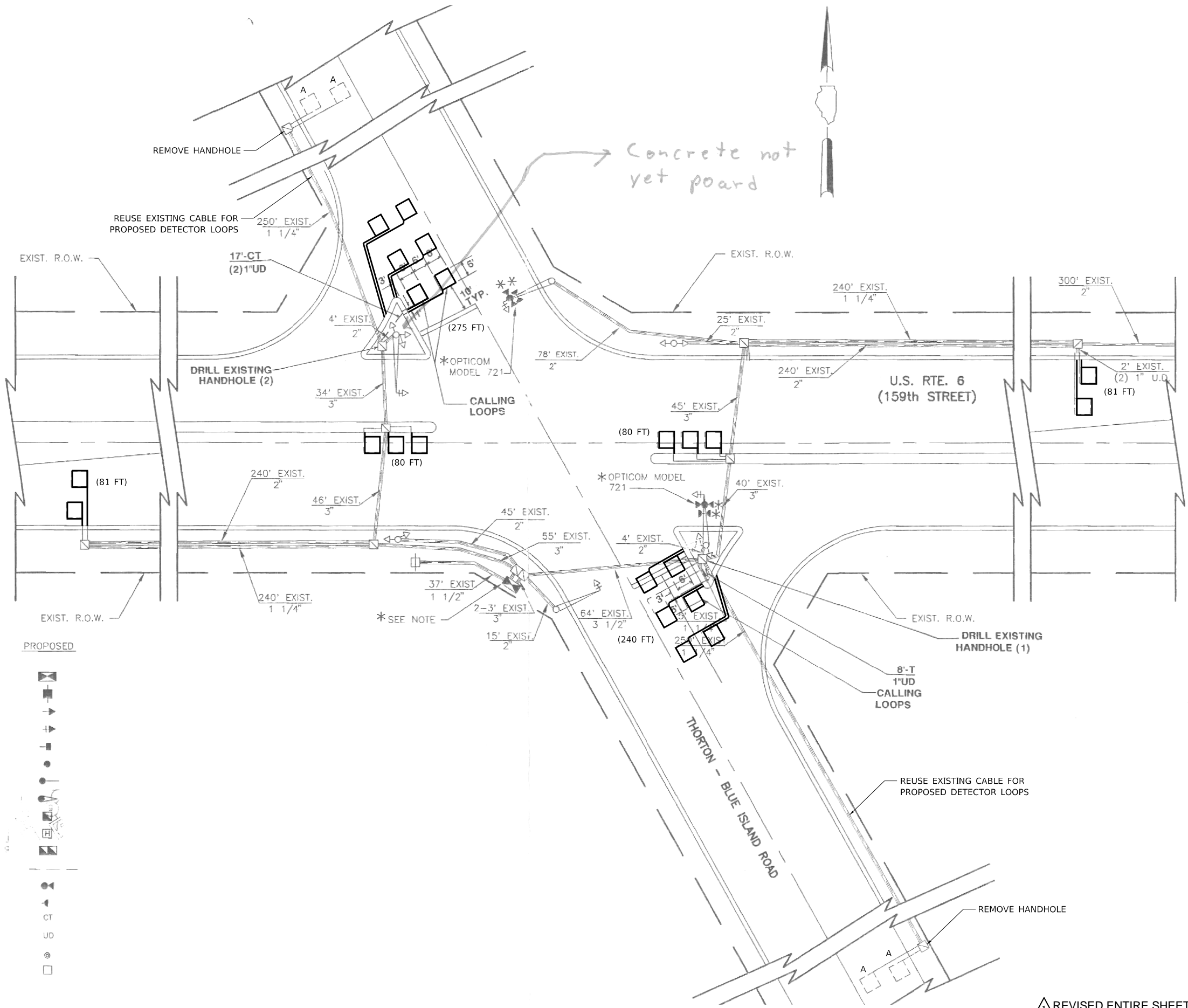
SUMMARY OF QUANTITIES
US-6 (CAROL AVE. TO TORRENCE AVE.)

SCALE: STA. TO STA.

F.A.P. RTE.	SECTION	COUNTY	TOTAL SHEETS	SHEET NO.
351	FAP 0351 22 RS	COOK	73	7
CONTRACT NO. 62T57				
ILLINOIS FED. AID PROJECT				

1

MODEL: Default
FILE: I:\mhc\c\0220721A_1DOT_US_6_Detector_Loops_APS\02A_Design\01_CADD\02_Sheet\Loops_Only_Location\Vincennes_Avenue\01.dgn



Concrete not yet poard

TRAFFIC SIGNAL LEGEND

	EXISTING	PROPOSED
CONTROLLER		
SERVICE INSTALLATION		
SIGNAL HEAD		
SIGNAL HEAD WITH BACKPLATE		
SIGNAL HEAD, PEDESTRIAN		
SIGNAL POST		
MAST ARM ASSEMBLY AND POLE, STEEL		
MAST ARM ASSEMBLY AND POLE, ALUMINUM		
HANDHOLE		
HEAVY DUTY HANDHOLE		
DOUBLE HANDHOLE		
G.S. CONDUIT IN TRENCH OF PUSHED		
EMERGENCY VEHICLE SYSTEM DETECTOR		
CONFIRMATION BEACON		
COMMON TRENCH		
UNIT DUCT		
PEDESTRIAN PUSHBUTTON DETECTOR		
DETECTOR LOOP		

REVISION 1
REVISED ENTIRE SHEET 11/3/2023 TS 310
ECON 56

DELTA ENGINEERING GROUP, LLC
CONSULTING ENGINEERS, CONSTRUCTION MANAGERS, SURVEYORS
111 W JACKSON BLVD, SUITE 910
CHICAGO, IL 60604
T 312.377.7700, F 312.427.6145

USER NAME = nsharma	DESIGNED - MA	REVISED -
PLOT SCALE = 40.0000' / in.	DRAWN - NS	REVISED -
PLOT DATE = 10/6/2023	CHECKED - MA	REVISED -
	DATE - 10/05/2023	REVISED -

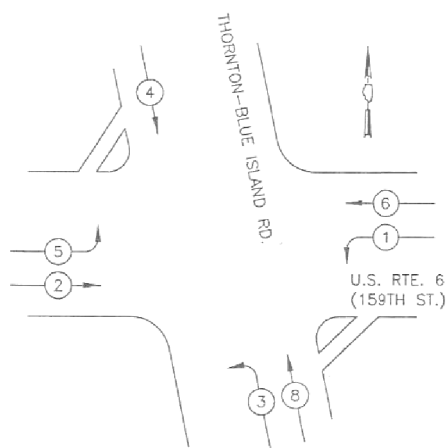
**STATE OF ILLINOIS
DEPARTMENT OF TRANSPORTATION**

**DETECTOR LOOP INSTALLATION PLAN
US RTE 6 (159TH ST) AT VINCENNES AVE (1 OF 2)**

SCALE: SHEET OF SHEETS STA. TO STA.

F.A.P. RTE.	SECTION	COUNTY	TOTAL SHEETS	SHEET NO.
	0351 22 RS	COOK	73	48
CONTRACT NO. 62T57				
ILLINOIS FED. AID PROJECT				

CONTROLLER SEQUENCE

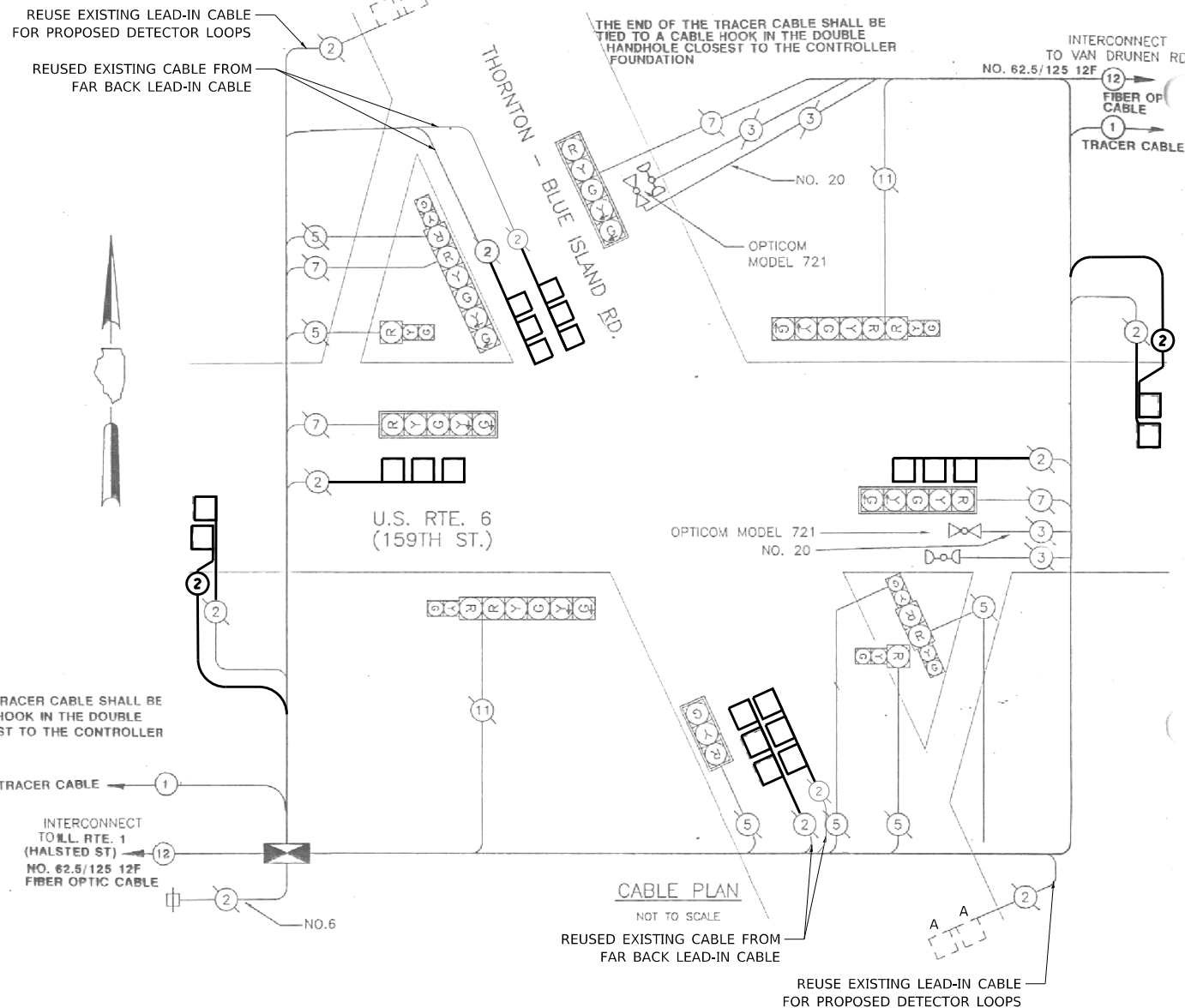
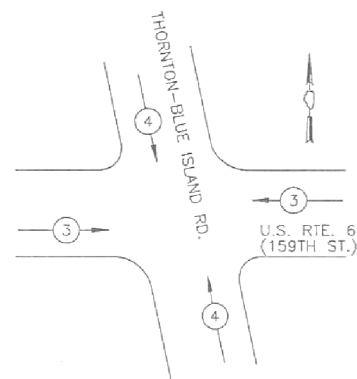


LEGEND

- ⊕ DUAL ENTRY PHASE
- ⊖ PEDESTRIAN PHASE
- * NUMBER REFERS TO ASSOCIATED PHASE

EXISTING PHASE DESIGNATION DIAGRAM

EMERGENCY VEHICLE PREEMPTION SEQUENCE



SCHEDULE OF QUANTITIES

ITEM DESCRIPTION	UNITS	TOTAL QTY
MAINTENANCE OF EXISTING TRAFFIC SIGNAL INSTALLATION	EACH	1
ELECTRIC CABLE IN CONDUIT, LEAD-IN, NO. 14 1 PAIR	FOOT	700
DETECTOR LOOP, TYPE I	FOOT	837
REMOVE AND REINSTALL ELECTRIC CABLE FROM CONDUIT	FOOT	715
RE-OPTIMIZE LEVEL 1	EACH	1

LOCATION: US ROUTE 6 (IL 159) AT VINCENNES AVENUE
COOK COUNTY
DEPARTMENT OF TRANSPORTATION AND HIGHWAYS
TRAFFIC SIGNAL INSTALLATION
ELECTRICAL SERVICE REQUIREMENTS

TYPE	NO. LAMPS	WATTAGE	% OPERATION	TOTAL WATTAGE
CONTROLLER	1	100	1.00	100.00
VEHICLE DET.	-	5	1.00	-
PED. SIGNAL	-	25	1.00	-
12" SIGNAL (RED)	14	17	0.50	119.00
(YELLOW)	14	25	0.05	17.50
(GREEN)	14	15	0.45	94.50
(ARROW)	12	12	0.10	14.40
ILLUMINATED LED STREET NAME SIGN, 6'	-	108	0.40	-
ILLUMINATED LED STREET NAME SIGN, 8'	-	144	0.40	-
VIDEO DETECTION	-	25	1.00	-
HEATER	-	200	0.30	-
TOTAL =				345.40

ENERGY COSTS TO:
 VILLAGE OF SOUTH HOLLAND

ENERGY SUPPLY CONTACT: GREG TRIEMSTRA
 PHONE: (708)235-2331
 COMPANY: ComEd



USER NAME = nsharma
 DESIGNED - MA
 DRAWN - NS
 CHECKED - MA
 DATE - 10/05/2023
 PLOT SCALE = 40,0000 ' / in.
 PLOT DATE = 10/6/2023

REVISOR -
 REVISION -
 REVISION -
 REVISION -

STATE OF ILLINOIS
DEPARTMENT OF TRANSPORTATION

DETECTOR LOOP INSTALLATION CABLE PLAN
US RTE 6 (159TH ST) AT VINCENNES AVE (2 OF 2)

SCALE: SHEET OF SHEETS STA. TO STA.

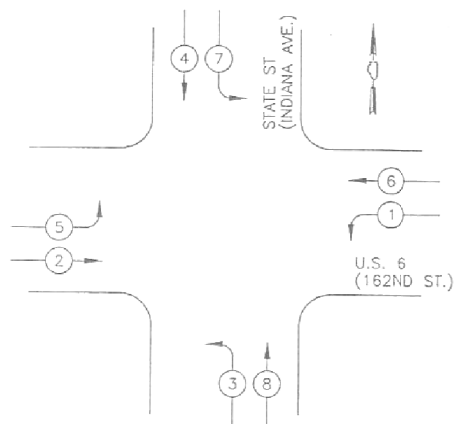
ADDED ENTIRE SHEET 11/3/2023

TS 310
 ECON 56

F.A.P. RTE.	SECTION	COUNTY	TOTAL SHEETS	SHEET NO.
	0351 22 RS	COOK	73	48A
ILLINOIS FED. AID PROJECT			CONTRACT NO. 62T57	

MODEL: Default; 02/20/2023 10:11:00 AM; DOT US 6; Director; Layer; ABS02A; Dshtn01; CAD0002; Sheet; Color; Vincennes Avenue; Ave-rtb02.dgn

CONTROLLER SEQUENCE

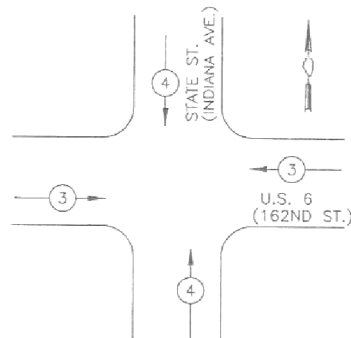


LEGEND

- ⊙ → DUAL ENTRY PHASE
- ⊙ → PEDESTRIAN PHASE
- * NUMBER REFERS TO ASSOCIATED PHASE

EXISTING PHASE DESIGNATION DIAGRAM

EMERGENCY VEHICLE PREEMPTION SEQUENCE

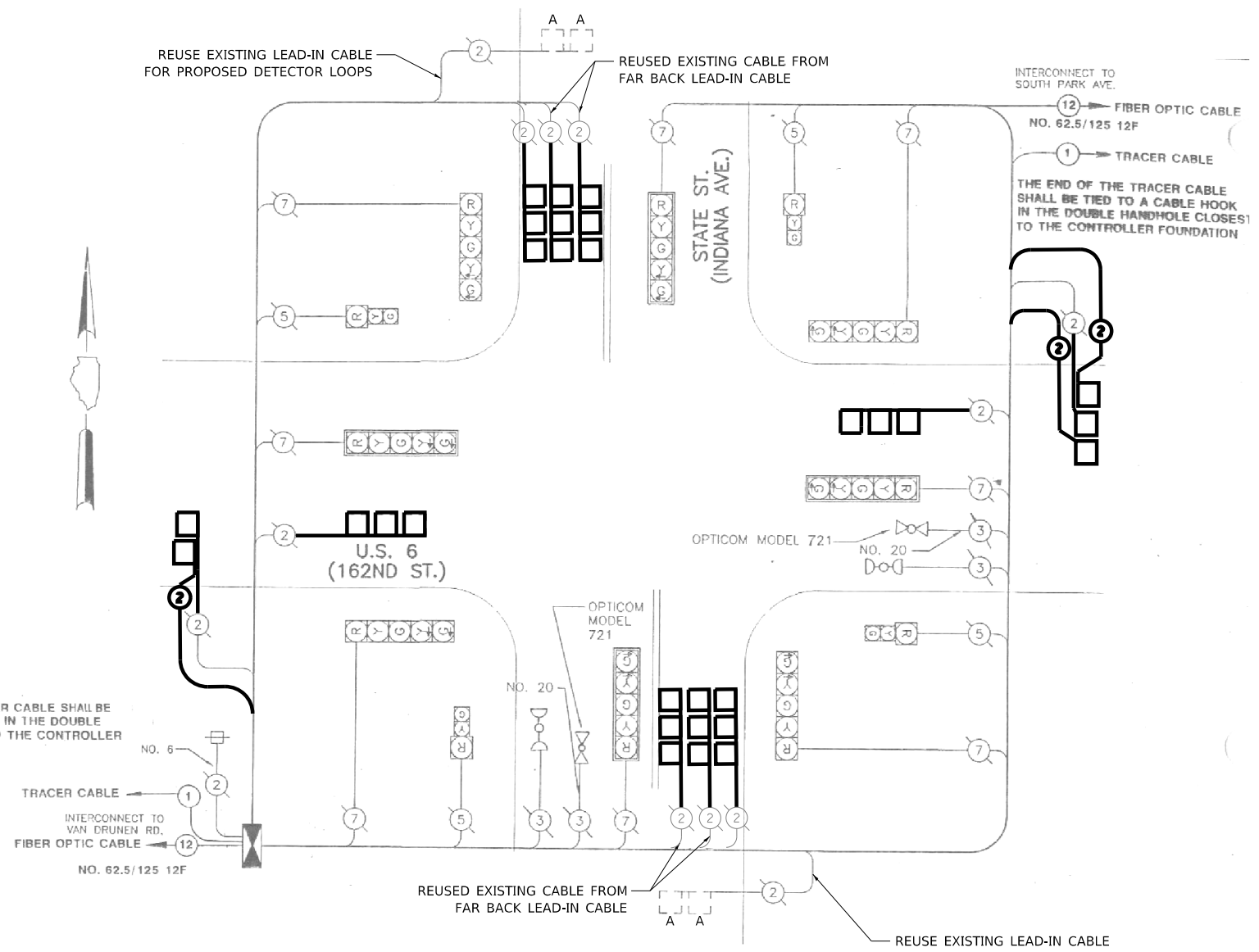


REUSE EXISTING LEAD-IN CABLE FOR PROPOSED DETECTOR LOOPS

REUSED EXISTING CABLE FROM FAR BACK LEAD-IN CABLE

INTERCONNECT TO SOUTH PARK AVE.
NO. 62.5/125 12F

1 → TRACER CABLE
THE END OF THE TRACER CABLE SHALL BE TIED TO A CABLE HOOK IN THE DOUBLE HANDHOLE CLOSEST TO THE CONTROLLER FOUNDATION



CABLE PLAN

NOT TO SCALE

SCHEDULE OF QUANTITIES

ITEM DESCRIPTION	UNITS	TOTAL QTY
MAINTENANCE OF EXISTING TRAFFIC SIGNAL INSTALLATION	EACH	1
ELECTRIC CABLE IN CONDUIT, LEAD-IN, NO. 14 1 PAIR	FOOT	1145
DETECTOR LOOP, TYPE I	FOOT	974
REMOVE AND REINSTALL ELECTRIC CABLE FROM CONDUIT	FOOT	775
RE-OPTIMIZE LEVEL 1	EACH	1

**LOCATION: US ROUTE 6 (IL 159) AT STATE STREET
COOK COUNTY
DEPARTMENT OF TRANSPORTATION AND HIGHWAYS
TRAFFIC SIGNAL INSTALLATION
ELECTRICAL SERVICE REQUIREMENTS**

TYPE	NO. LAMPS	WATTAGE	% OPERATION	TOTAL WATTAGE
CONTROLLER	1	100	1.00	100.00
VEHICLE DET.	-	5	1.00	-
PED. SIGNAL	-	25	1.00	-
12" SIGNAL (RED)	12	17	0.50	102.00
(YELLOW)	12	25	0.05	15.00
(GREEN)	12	15	0.45	81.00
(ARROW)	16	12	0.10	19.20
ILLUMINATED LED STREET NAME SIGN, 6'	-	108	0.40	-
ILLUMINATED LED STREET NAME SIGN, 8'	-	144	0.40	-
VIDEO DETECTION	-	25	1.00	-
HEATER	-	200	0.30	-
TOTAL =				317.20

ENERGY COSTS TO:
VILLAGE OF SOUTH HOLLAND

ENERGY SUPPLY CONTACT: GREG TRIEMSTRA
PHONE: (708)235-2331
COMPANY: ComEd



USER NAME = nsharma	DESIGNED - MA	REVISED -
PLOT SCALE = 40,0000' / in.	DRAWN - NS	REVISED -
PLOT DATE = 10/6/2023	CHECKED - MA	REVISED -
	DATE - 10/05/2023	REVISED -

**STATE OF ILLINOIS
DEPARTMENT OF TRANSPORTATION**

**DETECTOR LOOP INSTALLATION CABLE PLAN
US RTE 6 (159TH ST) AT STATE ST (2 OF 2)**

SCALE: SHEET OF SHEETS STA. TO STA.

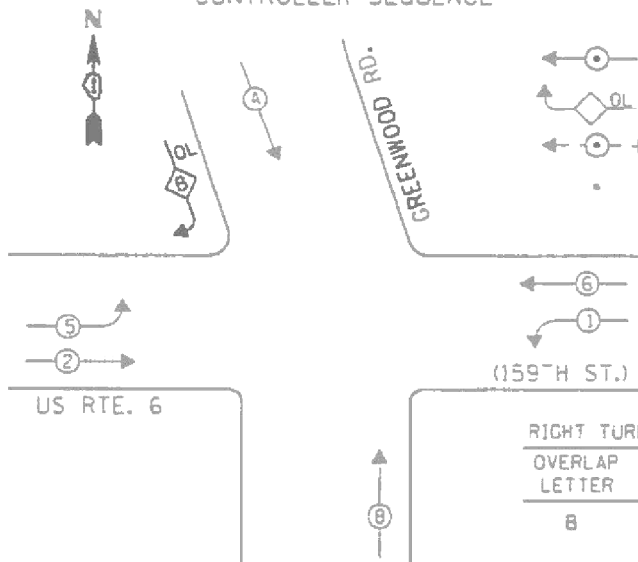
ADDED ENTIRE SHEET 11/3/2023

TS 295
ECON 56

F.A.P. RTE.	SECTION	COUNTY	TOTAL SHEETS	SHEET NO.
	0351 22 RS	COOK	73	49A
CONTRACT NO. 62T57				
ILLINOIS FED. AID PROJECT				

MODEL: Default; FILE: \\nas01c\cgs\02207071A_IDOT_US_6_Detector_Loop_APS02A_Draft\01_CADD\02_Sheet\Coop_Ovr_03\02\State_Street\02.dgn

CONTROLLER SEQUENCE



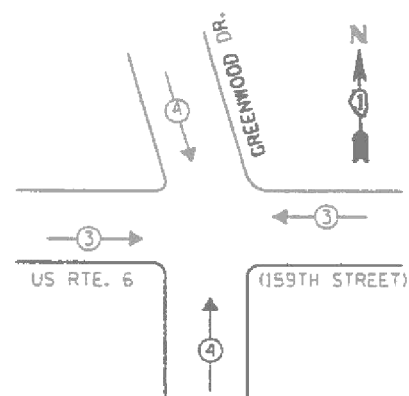
LEGEND

- ← ⊙ → DLAI ENTRY PHASE
- ← ⊙ → OVERLAP
- ← ⊙ → PEDESTRIAN PHASE
- NUMBER REFERS TO ASSOCIATED PHASE

RIGHT TURN OVERLAP PHASE DESIGNATION

OVERLAP LETTER	PERMISSIVE PHASE	PROTECTED PHASE
B	=	4 + 5

PHASE DESIGNATION DIAGRAM



EMERGENCY VEHICLE PREEMPTION SEQUENCE

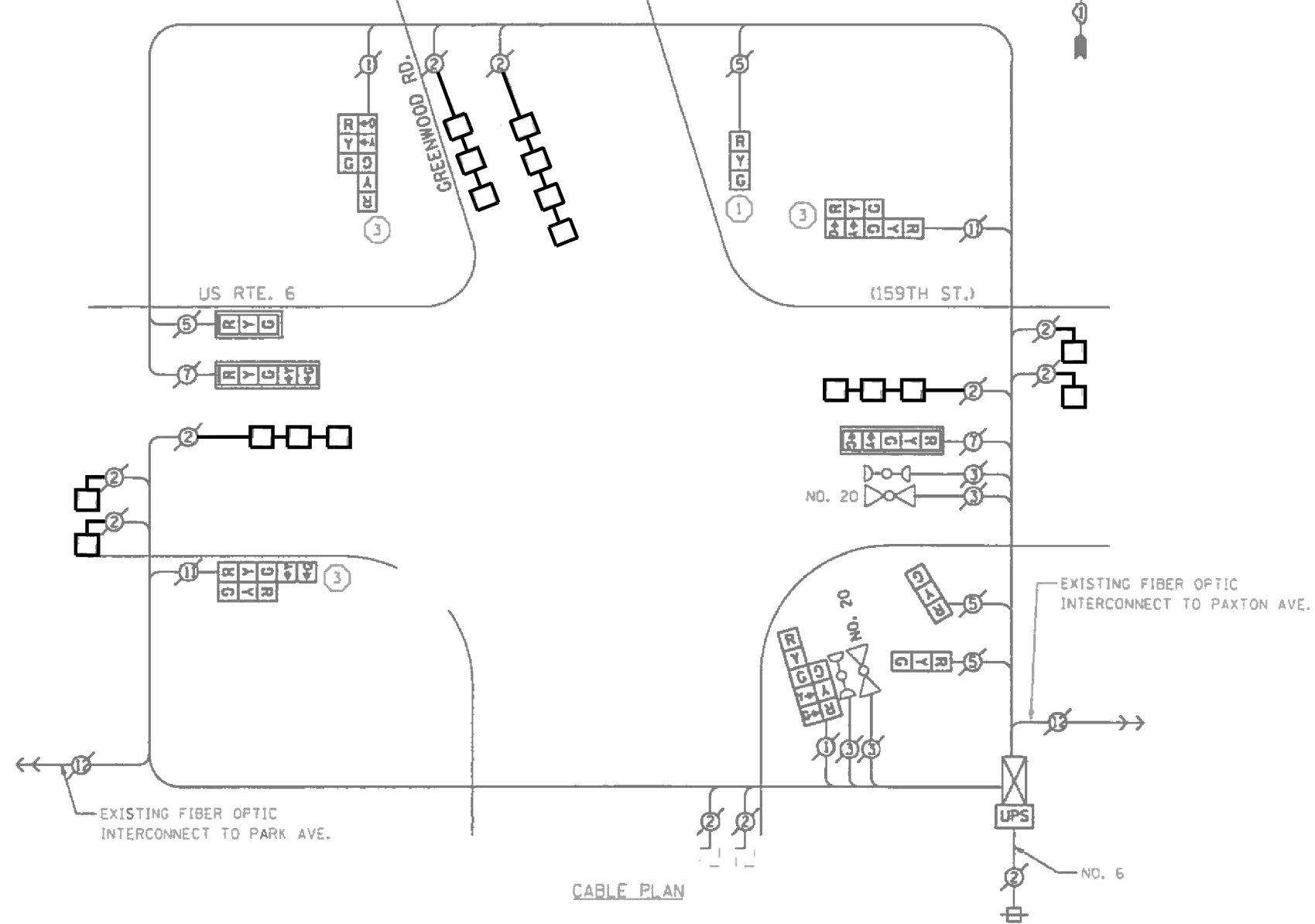
EMERGENCY VEHICLE PREEMPTORS		
EMERGENCY VEHICLE PREEMPTOR	3	4
MOVEMENT	← →	↑ ↓

I. D. O. T. TRAFFIC SIGNAL INSTALLATION ELECTRICAL SERVICE REQUIREMENTS

TYPE	NO. LAMPS	WATTAGE (INCANDE.)	WATTAGE (LED)	OPERATION	TOTAL WATTAGE
SIGNAL (RED)	14		11	0.50	119.0
(YELLOW)	14		25	0.25	87.5
(GREEN)	14		15	0.25	52.5
ARROW	12		12	0.10	14.4
CONTROLLER	1	100		1.00	100.0
BATTERY BACKUP	1	25		1.00	25.0
TOTAL =					398.4

ENERGY COSTS- BILLED TO: IDOT DISTRICT 1
201 WEST CENTER COURT
SCHALMURG, IL 60196-1096

ENERGY SUPPLY- CONTACT BRAD SHINABARGAR
PHONE 108-325-2632
COMMONWEALTH EDISON



CABLE PLAN

SCHEDULE OF QUANTITIES

ITEM DESCRIPTION	UNITS	TOTAL QTY
DETECTOR LOOP REPLACEMENT	FOOT	623

MODEL: Default; 02/20/2023 10:11:00 AM; US-6-Detector-Loop; AP5102A; Design:01_CADD002_Sheet:Loop; Only location:Greenwood Avenue\0125222-Greenwood-sh-02.dgn

DELTA ENGINEERING GROUP, LLC
CONSULTING ENGINEERS, CONSTRUCTION MANAGERS, SURVEYORS
111 W JACKSON BLVD, SUITE 910
CHICAGO, IL 60604
T 312.377.7700, F 312.427.6145

USER NAME = nsharma	DESIGNED - MA	REVISED -
PLOT SCALE = 40.0000 "/>		

STATE OF ILLINOIS
DEPARTMENT OF TRANSPORTATION

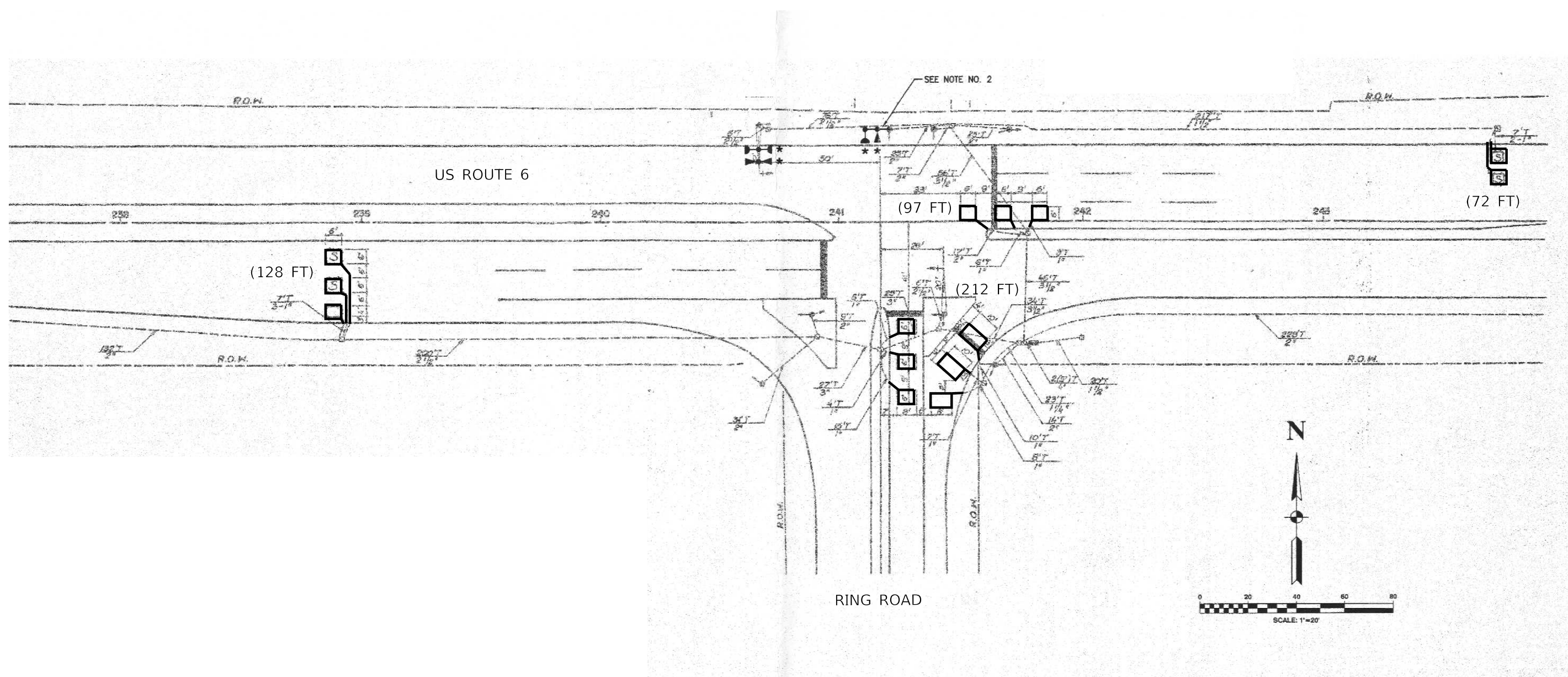
DETECTOR LOOP INSTALLATION CABLE PLAN
US RTE 6 (159TH ST) AT GREENWOOD AVE (2 OF 2)

F.A.P. RTE.	SECTION	COUNTY	TOTAL SHEETS	SHEET NO.
	0351 22 RS	COOK	73	58A
CONTRACT NO. 62T57				

TS 230
ECON 49
ADDED ENTIRE SHEET 11/3/2023

SCALE: SHEET OF SHEETS STA. TO STA.

ILLINOIS FED. AID PROJECT



MODEL: Default; FILE: I:\mhc\02202721A_IDOT_US-6_Detector_Loop_APS\02A_Design\01_CADD\02_Sheet\Loop_Road\1125722-Ring_Road-sht-01.dgn

DELTA ENGINEERING GROUP, LLC
 CONSULTING ENGINEERS, CONSTRUCTION MANAGERS, SURVEYORS
 111 W JACKSON BLVD, SUITE 910
 CHICAGO, IL 60604
 T 312.377.7700, F 312.427.6145

USER NAME = nsharma	DESIGNED - MA	REVISED -
DRAWN - RM	REVISIONS -	
PLOT SCALE = 48.0000 ' / in.	CHECKED - MA	REVISED -
PLOT DATE = 10/6/2023	DATE - 10/05/2023	REVISED -

STATE OF ILLINOIS
DEPARTMENT OF TRANSPORTATION

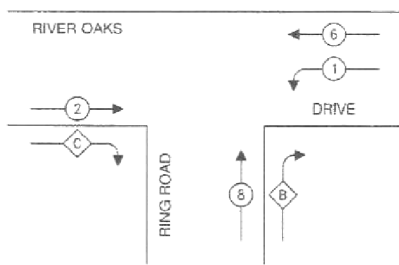
DETECTOR LOOP INSTALLATION PLAN
US RTE 6 (159TH ST) AT RING RD (1 OF 2)

SCALE: SHEET OF SHEETS STA. TO STA.

F.A.P. RTE.	SECTION	COUNTY	TOTAL SHEETS	SHEET NO.
	0351 22 RS	COOK	73	58D
CONTRACT NO. 62T57				
ILLINOIS FED. AID PROJECT				

ADDED ENTIRE SHEET 11/3/2023

TS 280
 ECON 49

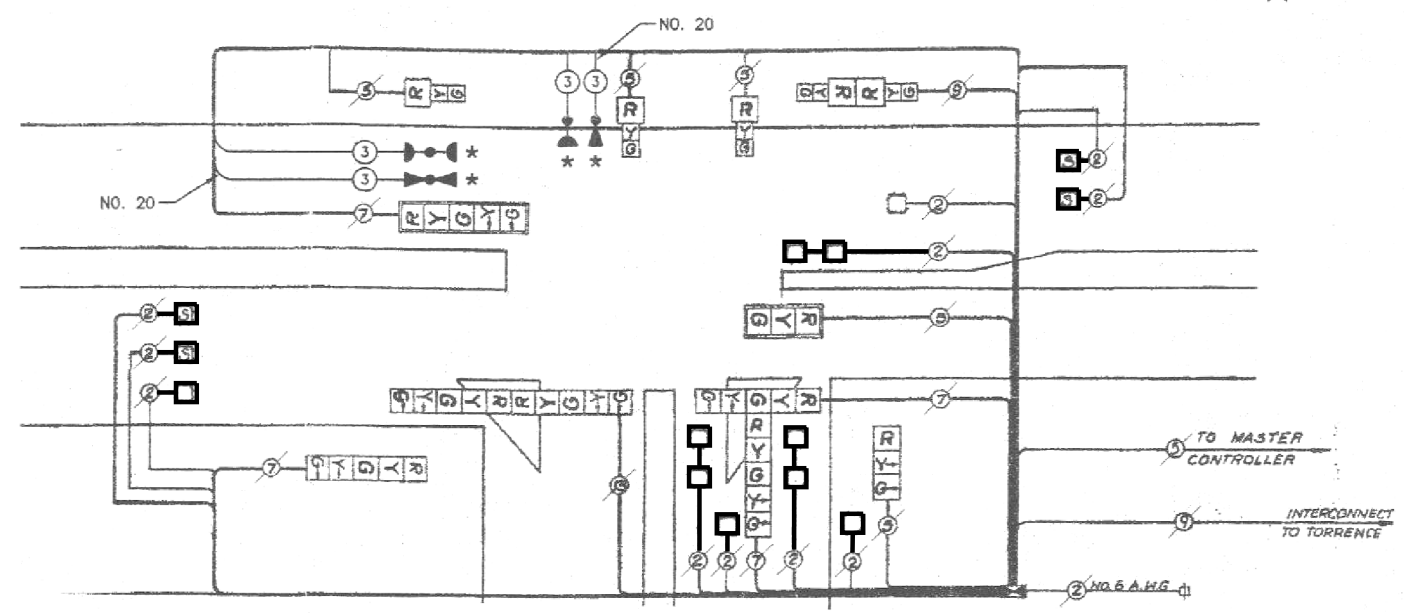


PHASE DESIGNATION DIAGRAM

OVERLAP LETTER	PERMISSIVE PHASE	PROTECTED PHASE	DISPLAY
B	= 8	+ 1	- 8
C	= 2	+ 8	- 2

LEGEND

- ← * → DUAL ENTRY PHASE
- ← * → SINGLE ENTRY PHASE
- ← * → OVERLAP
- ← * → PEDESTRIAN PHASE
- * NUMBER REFERS TO ASSOCIATED PHASE



CABLE PLAN



LOCATION: US ROUTE 6 (IL 159) AT SOUTH PARK AVENUE
 COOK COUNTY
 DEPARTMENT OF TRANSPORTATION AND HIGHWAYS
 TRAFFIC SIGNAL INSTALLATION
 ELECTRICAL SERVICE REQUIREMENTS

TYPE	NO. LAMPS	WATTAGE	% OPERATION	TOTAL WATTAGE
CONTROLLER	1	100	1.00	100.00
VEHICLE DET.	-	5	1.00	-
PED. SIGNAL	-	25	1.00	-
12" SIGNAL (RED)	13	17	0.50	110.50
(YELLOW)	11	25	0.05	13.75
(GREEN)	11	15	0.45	74.25
(ARROW)	14	12	0.10	16.80
ILLUMINATED LED STREET NAME SIGN, 6'	-	108	0.40	-
ILLUMINATED LED STREET NAME SIGN, 8'	-	144	0.40	-
VIDEO DETECTION	-	25	1.00	-
HEATER	-	200	0.30	-
TOTAL =				315.30

ENERGY COSTS TO:
 VILLAGE OF SOUTH HOLLAND

ENERGY SUPPLY CONTACT: GREG TRIEMSTRA
 PHONE: (708)235-2331
 COMPANY: ComEd

SCHEDULE OF QUANTITIES

ITEM DESCRIPTION	UNITS	TOTAL QTY
DETECTOR LOOP REPLACEMENT	FOOT	509



DELTA ENGINEERING GROUP, LLC
 CONSULTING ENGINEERS, ARCHITECTS, CONSTRUCTION MANAGERS, SURVEYORS
 111 W JACKSON BLVD, SUITE 910
 CHICAGO, IL 60604
 T 312.377.7700, F 312.427.6145

USER NAME = nsharma	DESIGNED - MA	REVISED -
PLOT SCALE = 40,0000 ' / in.	DRAWN - RM	REVISED -
PLOT DATE = 10/6/2023	CHECKED - MA	REVISED -
	DATE - 10/05/2023	REVISED -

STATE OF ILLINOIS
 DEPARTMENT OF TRANSPORTATION

DETECTOR LOOP INSTALLATION CABLE PLAN
 US RTE 6 (159TH ST) AT RING RD (2 OF 2)

SCALE: SHEET OF SHEETS STA. TO STA.

REVISED ENTIRE SHEET 11/3/2023 TS 280 ECON 49

F.A.P. RTE.	SECTION	COUNTY	TOTAL SHEETS	SHEET NO.
	0351 22 RS	COOK	73	58E

CONTRACT NO. 62T57
 ILLINOIS FED. AID PROJECT

MODEL: Default; D:\20230721A_1DOT_US_6_Detector_Loop_ABS02A_Design\01_CADD\02_Sheet\Coop_Cook_16atthorRing_Road\1D15722-Ring_Roadsch-02.dgn
 FILE: Name: C:\20230721A_1DOT_US_6_Detector_Loop_ABS02A_Design\01_CADD\02_Sheet\Coop_Cook_16atthorRing_Road\1D15722-Ring_Roadsch-02.dgn

