

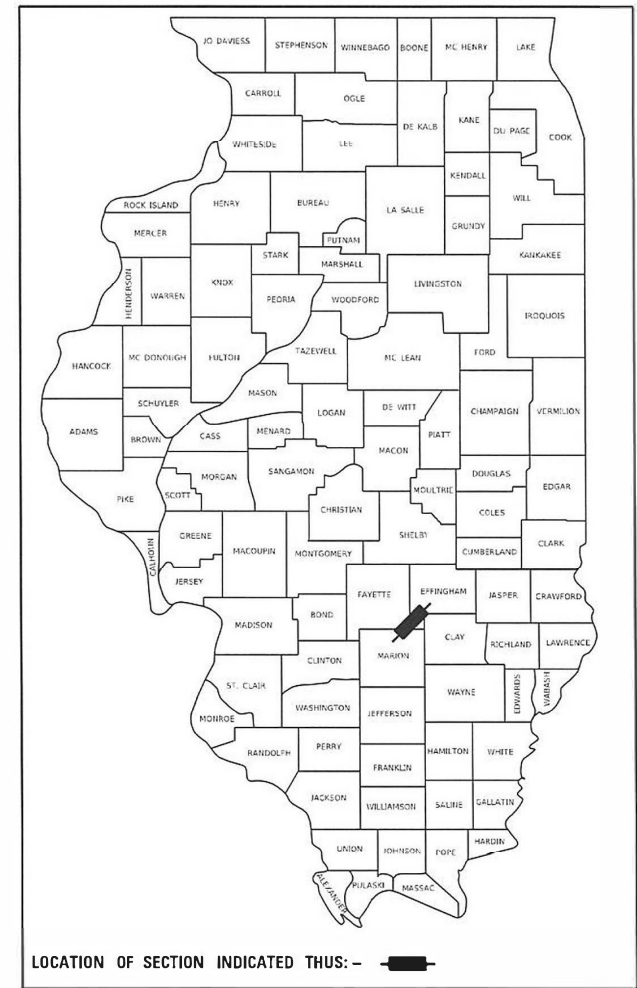
11-17-2023 LETTING ITEM 077

STATE OF ILLINOIS
DEPARTMENT OF TRANSPORTATION

F.A.I. RTE.	SECTION	COUNTY	TOTAL SHEETS	SHEET NO.
57	*	FAYETTE	26	1
		ILLINOIS	CONTRACT NO. 74B31	

* D7 BRIDGE REPAIRS 2024-5

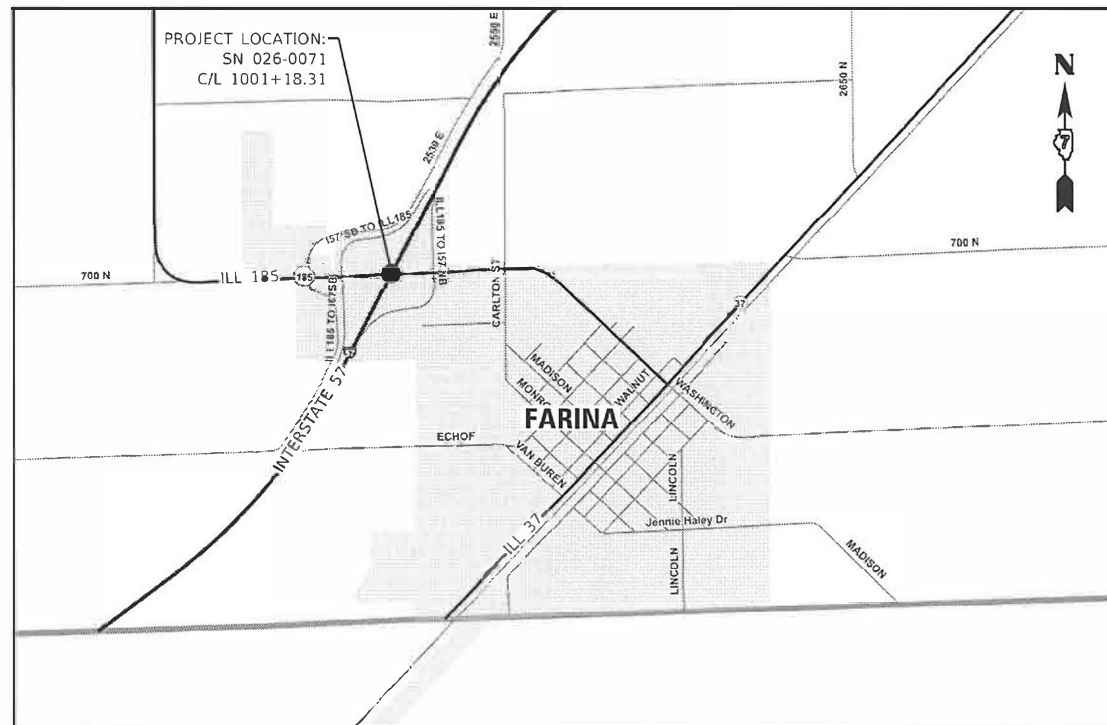
D-97-052-22



PROPOSED HIGHWAY PLANS

FAI ROUTE 57 (I-57)
SECTION D7 BRIDGE REPAIRS 2024-5
PROJECT NHPP-UA6Y(031)
BRIDGE DECK OVERLAY, JOINT REPLACE / REPAIR
FAYETTE COUNTY

C-97-099-22



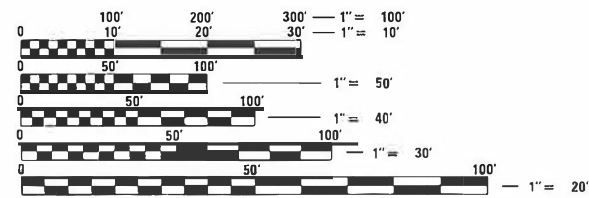
FOR INDEX OF SHEETS, SEE SHEET NO. 2

ADT (2024) = 21000 (1-57)

% TRUCKS = 50.4%

ADT (2024) = 3050 (ILL 185)

% TRUCKS = 25.4%



FULL SIZE PLANS HAVE BEEN PREPARED USING STANDARD ENGINEERING SCALES. REDUCED SIZED PLANS WILL NOT CONFORM TO STANDARD SCALES. IN MAKING MEASUREMENTS ON REDUCED PLANS, THE ABOVE SCALES MAY BE USED.

J.U.L.I.E.
JOINT UTILITY LOCATION INFORMATION FOR EXCAVATORS
1-800-892-0123
OR 811

PROJECT ENGINEER BRIAN LEWIS
PROJECT MANAGER LEAH HILLE

CONTRACT NO. 74B31

GROSS LENGTH = 392.0 FT. = 0.07 MILE
NET LENGTH = 392.0 FT. = 0.07 MILE

STATE OF ILLINOIS
DEPARTMENT OF TRANSPORTATION

SUBMITTED August 29, 2023
Jeffrey P. Myer
REGIONAL ENGINEER

October 13, 2023
Scott A. Etkin
ENGINEER OF DESIGN AND ENVIRONMENT

October 13, 2023
Stephen M. Lewis
DIRECTOR OF HIGHWAYS PROJECT IMPLEMENTATION

PRINTED BY THE AUTHORITY
OF THE STATE OF ILLINOIS

GENERAL NOTES

THIS PROJECT IS LOCATED ON FAI 57 IN FAYETTE COUNTY AT ILL ROUTE 185 (OVERHEAD) IN FARINA.

THE WORK ON THIS PROJECT CONSISTS OF EXPANSION JOINT REPLACEMENT WITH NEW STRIP SEALS, STRUCTURAL REPAIR OF CONCRETE ABUTMENTS, REPLACEMENT OF DECK DRAINS, FULL DEPTH DECK PATCHING, CURB REPAIR, SCARIFICATIONS, CONCRETE OVERLAY, AND DIAMOND GRINDING.

WHEN APPLYING SHORT TERM PAVEMENT MARKINGS, TEMPORARY TAPE SHALL BE USED ON THE SURFACE COURSES AND PAINT SHALL BE USED ON MILLED SURFACES.

THE RESIDENT ENGINEER SHALL BE THE SOLE JUDGE CONCERNING THE CURING TIME FOR THE VARIOUS HOT-MIX ASPHALT LIFTS.

A UNIFORMLY STRAIGHT SAW CUT SHALL BE MADE AT LOCATIONS WHERE PROPOSED NEW CONSTRUCTION WILL ABUT EXISTING HOT-MIX ASPHALT SURFACES. THE SAW CUT SHALL BE MADE THE SAME DEPTH AS THE HOT-MIX ASPHALT SURFACE REMOVAL. THIS WORK WILL BE CONSIDERED INCLUDED IN THE COST OF THE CONTRACT ITEMS INVOLVED AND NO EXTRA COMPENSATION WILL BE ALLOWED.

THE LOCATIONS AND/OR DEPTHS OF UNDERGROUND UTILITIES SHOWN HAVE BEEN TAKEN FROM INFORMATION FURNISHED BY THE UTILITY OWNERS AND MUST BE CONSIDERED APPROXIMATE. FIELD MARKINGS OF FACILITIES IN CRITICAL AREAS MAY BE OBTAINED BY PROVIDING. MINIMUM OF FORTY-EIGHT (48) HOURS ADVANCE NOTICE THROUGH THE J.U.L.I.E. SYSTEM BY CALLING 800-892-0123.

INDEX OF SHEETS

SHEET NO.	ITEM
1	COVER SHEET
2	INDEX OF SHEETS, LIST OF STANDARDS, AND GENERAL NOTES
3-4	SUMMARY OF QUANTITIES
5	SCHEDULE OF QUANTITIES
6	PLAN SHEET
7	STAGE 1 CONSTRUCTION
8	STAGE 2 CONSTRUCTION
9	POST-STAGE CONSTRUCTION
10-22	STRUCTURE PLANS
23-26	DISTRICT 7 DETAIL SHEETS

THE FOLLOWING STANDARDS ARE A PART OF THESE PLANS AND ARE INCLUDED AFTER SHEET NO. 26:

STANDARD NO.	DESCRIPTION
000001-08	STANDARD SYMBOLS, ABBREVIATIONS AND PATTERNS
001001-02	AREAS OF REINFORCEMENT BARS
001006	DECIMAL OF AN INCH AND OF A FOOT
353001-05	PCC BASE COURSE WITH HMA BINDER AND SURFACE COURSES
420001-10	PAVEMENT JOINTS
606001-08	CONCRETE CURB TYPE B AND COMBINATION CURB AND GUTTER
606301-04	PC CONCRETE ISLANDS AND MEDIANS
701001-02	OFF-ROAD OPERATIONS, 2L, 2W, MORE THAN 15' AWAY
701006-05	OFF-ROAD OPERATIONS, 2L, 2W, 15' TO 24' FROM PAVEMENT EDGE
701011-04	OFF-ROAD MOVING OPERATIONS, 2L, 2W, DAY ONLY
701201-05	LANE CLOSURE, 2L, 2W, DAY ONLY, FOR SPEED ≥ 45 MPH
701301-04	LANE CLOSURE, 2L, 2W, SHORT TIME OPERATIONS
701306-04	LANE CLOSURE, 2L, 2W, SLOW MOVING OPERATIONS DAY ONLY, FOR SPEEDS ≥ 45 MPH
701311-03	LANE CLOSURE, 2L, 2W, MOVING OPERATIONS - DAY ONLY
701316-13	LANE CLOSURE, 2L, 2W BRIDGE REPAIR, FOR SPEEDS ≥ 45 MPH
701400-11	APPROACH TO LANE CLOSURE, FREEWAY/EXPRESSWAY
701401-13	LANE CLOSURE, FREEWAY/EXPRESSWAY
701411-09	LANE CLOSURE, MULTILANE, AT ENTRANCE OR EXIT RAMP, FOR SPEEDS ≥ 45 MPH
701901-08	TRAFFIC CONTROL DEVICES
780001-05	TYPICAL PAVEMENT MARKINGS
782001-01	CURB REFLECTORS

APPLICATION RATES

THE FOLLOWING APPLICATION RATES WERE USED IN CALCULATING PLAN QUANTITIES AND HAVE BEEN INCLUDED FOR REFERENCE:

BITUMINOUS MATERIALS (TACK COAT)	0.05 LB/SQ FT (ON MILLED SURFACES)
	0.025 LB/SQ FT (ON HMA LIFTS)

MIXTURE REQUIREMENTS

THE FOLLOWING MIXTURE REQUIREMENTS ARE APPLICABLE TO THIS PROJECT:

LOCATION(S)	MIXTURE USE(S)	PG	DESIGN AIR Voids	MIXTURE COMPOSITION	FRICTION AGGREGATE	MIXTURE WEIGHT	QUALITY MANAGEMENT PROGRAM	SUBLOT SIZE	MATERIAL TRANSFER DEVICE (REQUIRED?)
MAINLINE	POLYMERIZED HMA SURFACE COURSE, IL-9.5, MIX "D", N90	PG 70-22	4.0% @ N=90	IL - 9.5	MIXTURE D	N90	QC/QA	3000	N/A

REV. - MS

MODEL: Default
 FILE NAME: P:\Public\csw_bentley.com_PWD\DOT\Documents\DOT_Offices\District_7\Projects\74831\CAD\data\CAD\sheet\0774831-sh-general.dgn

USER NAME = jessica.hille	DESIGNED - LMH	REVISED -	STATE OF ILLINOIS DEPARTMENT OF TRANSPORTATION	INDEX OF SHEETS AND GENERAL NOTES	F.A.I. RTE: 57	SECTION *	COUNTY FAYETTE	TOTAL SHEETS 26	SHEET NO. 2
PLOT SCALE = 100.0000' / in.	CHECKED -	REVISED -			CONTRACT NO. 74831				
PLOT DATE = 8/30/2023	DATE - 8/30/2023	REVISED -			SCALE: NO SCALE	SHEET OF SHEETS STA. TO STA.	ILLINOIS FED. AID PROJECT		
					* D7 BRIDGE REPAIRS 2024-5				

SUMMARY OF QUANTITIES			TOTAL QUANTITIES	CONSTRUCTION TYPE CODE		
CODE NO	ITEM	UNIT		0059 90% FEDERAL 10% STATE		
35300400	PORTLAND CEMENT CONCRETE BASE COURSE 9"	SO YD	92	92		
40600290	BITUMINOUS MATERIALS (TACK COAT)	POUND	310	310		
40604164	POLYMERIZED HOT-MIX ASPHALT SURFACE COURSE, IL-9.5, MIX "D", N90	TON	40	40		
42001300	PROTECTIVE COAT	SO YD	1285	1285		
44000155	HOT-MIX ASPHALT SURFACE REMOVAL, 1 1/2"	SO YD	460	460		
44000500	COMBINATION CURB AND GUTTER REMOVAL	FOOT	331	331		
50102400	CONCRETE REMOVAL	CU YD	24.7	24.7		
50157300	PROTECTIVE SHIELD	SO YD	670	670		
50300100	FLOOR DRAINS	EACH	20	20		
50300255	CONCRETE SUPERSTRUCTURE	CU YD	24.7	24.7		
50800205	REINFORCEMENT BARS, EPOXY COATED	POUND	3750	3750		
50800515	BAR SPLICERS	EACH	36	36		
52000110	PREFORMED JOINT STRIP SEAL	FOOT	144	144		
67000400	ENGINEER'S FIELD OFFICE, TYPE A	CAL MO	3	3		

SUMMARY OF QUANTITIES			TOTAL QUANTITIES	CONSTRUCTION TYPE CODE		
CODE NO	ITEM	UNIT		0059 90% FEDERAL 10% STATE		
67100100	MOBILIZATION	L SUM	1	1		
70100205	TRAFFIC CONTROL AND PROTECTION, STANDARD 701401	EACH	2	2		
70100420	TRAFFIC CONTROL AND PROTECTION, STANDARD 701411	EACH	2	2		
70100450	TRAFFIC CONTROL AND PROTECTION, STANDARD 701201	LSUM	1	1		
70100460	TRAFFIC CONTROL AND PROTECTION, STANDARD 701306	LSUM	1	1		
70103815	TRAFFIC CONTROL SURVEILLANCE	CAL DA	5	5		
70106500	TEMPORARY BRIDGE TRAFFIC SIGNALS	EACH	1	1		
70107005	PAVEMENT MARKING BLACKOUT TAPE, 5"	FOOT	1150	1150		
70107025	CHANGEABLE MESSAGE SIGN	CAL DA	28	28		
70300100	SHORT TERM PAVEMENT MARKING	FOOT	2780	2780		
70300150	SHORT TERM PAVEMENT MARKING REMOVAL	SO FT	1760	1760		
* 78003111	PREFORMED PLASTIC PAVEMENT MARKING, TYPE B - STANDARD - LINE 4"	FOOT	1540	1540		
* 78011025	GROOVING FOR RECESSED PAVEMENT MARKING 5"	FOOT	1540	1540		

* SPECIALTY ITEM

REV. - MS

MODEL: Default
 FILE: \\pawillust-pw-bentley.com\PWD\DOT\Documents\DOT_Offices\District_7\Projects\74B31\CADD\DATA\CAD\Sheets\DOT74B31-SP-500.dgn

USER NAME = jessica.hille	DESIGNED - LMH	REVISED -
	DRAWN - LMH	REVISED -
PLOT SCALE = 100.0000' / in.	CHECKED -	REVISED -
PLOT DATE = 8/30/2023	DATE - 8/30/2023	REVISED -

STATE OF ILLINOIS
DEPARTMENT OF TRANSPORTATION

SUMMARY OF QUANTITIES

SCALE: NO SCALE SHEET OF SHEETS STA. TO STA.

F.A.I. RTE.	SECTION	COUNTY	TOTAL SHEETS	SHEET NO.
57	*	FAYETTE	26	3
CONTRACT NO. 74B31				
ILLINOIS FED. AID PROJECT				

SUMMARY OF QUANTITIES			TOTAL QUANTITIES	CONSTRUCTION TYPE CODE		
CODE NO	ITEM	UNIT		0059 90% FEDERAL 10% STATE		
* 7820020	CURB REFLECTOR	EACH	30	30		
X4402020	CONCRETE MEDIAN SURFACE REMOVAL	SQ FT	826	826		
X4403300	CONCRETE MEDIAN REMOVAL	SQ FT	43	43		
X5030250	BRIDGE DECK GROOVING (LONGITUDINAL)	SQ YD	809	809		
X6061702	CONCRETE MEDIAN, TYPE SM (DOWELLED)	SQ FT	826	826		
X7010200	TRAFFIC CONTROL AND PROTECTION, STANDARD 701316 (SPECIAL)	EACH	1	1		
Z0003300	BASE COURSE REMOVAL (SPECIAL)	SQ YD	6	6		
Z0012111	BRIDGE DECK FLY ASH OR GGBF SLAG CONCRETE OVERLAY, 2 1/2"	SQ YD	1170	1170		
Z0012142	BRIDGE DECK SCARIFICATION, 2 1/4"	SQ YD	1170	1170		
Z0012754	STRUCTURAL REPAIR OF CONCRETE (DEPTH EQUAL TO OR LESS THAN 5")	SQ FT	467	467		
Z0012755	STRUCTURAL REPAIR OF CONCRETE (DEPTH GREATER THAN 5")	SQ FT	7	7		
Z0016001	DECK SLAB REPAIR (FULL DEPTH, TYPE I)	SQ YD	13	13		

SUMMARY OF QUANTITIES			TOTAL QUANTITIES	CONSTRUCTION TYPE CODE		
CODE NO	ITEM	UNIT		0059 90% FEDERAL 10% STATE		
Z0016002	DECK SLAB REPAIR (FULL DEPTH, TYPE II)	SQ YD	14	14		
Z0029090	DIAMOND GRINDING (BRIDGE SECTION)	SQ YD	1033	1033		

* SPECIALTY ITEM

REV. - MS

MODEL: Default
FILE NAME: \\p1\gort-pw-bentley.com\p1\DOT\Documents\DOT Offices\District 3\Projects\74B31\CADD\Drawings\CAD\Sheets\74B31-SP-S00.dgn

USER NAME = jessica.hille	DESIGNED - LMH	REVISED -
PLOT SCALE = 100.0000' / in.	DRAWN - LMH	REVISED -
PLOT DATE = 8/30/2023	CHECKED -	REVISED -
	DATE - 8/30/2023	REVISED -

STATE OF ILLINOIS
DEPARTMENT OF TRANSPORTATION

SUMMARY OF QUANTITIES

SCALE: NO SCALE SHEET OF SHEETS STA. TO STA.

F.A.I. RTE.	SECTION	COUNTY	TOTAL SHEETS	SHEET NO.
57	*	FAYETTE	26	4
CONTRACT NO. 74B31				
ILLINOIS FED. AID PROJECT				

* D7 BRIDGE REPAIRS 2024-5

MODEL: Default
 FILE NAME: p:\project-pw-bentley.com\PIV\DOT\Documents\DOT Office\Dir\drct_7\Project\74B31\CAD\DATA\CAD\Sheet\074B31-5-Reschedule.dwg

MEDIAN SCHEDULE		35300400 PORTLAND CEMENT CONCRETE BASE COURSE 9"	44000500 COMBINATION CURB AND GUTTER REMOVAL	78200020 CURB REFLECTOR	X4402020 CONCRETE MEDIAN SURFACE REMOVAL	X4403300 CONCRETE MEDIAN REMOVAL	X6061702 CONCRETE MEDIAN, TYPE SM (DOWELLED)	Z0003300 BASE COURSE REMOVAL (SPECIAL)
STATION TO STATION		SQ YD	FOOT	EACH	SQ FT	SQ FT	SQ FT	SQ YD
995+13.0	995+94.0	48.3	165.0	8.0	435.0	-	435.0	-
995+13.0	995+19.0	-	-	-	-	21.0	-	2.6
999+86.7	1002+50.2	-	-	14.0	-	-	-	-
1006+41.0	1007+23.0	43.4	166.0	8.0	391.0	-	391.0	-
1007+17.0	1007+23.0	-	-	-	-	22.0	-	2.7
TOTALS:		92	331	30	826	43	826	6

PAVEMENT MARKING SCHEDULE		70107005 PAVEMENT MARKING BLACKOUT TAPE, 5"	70300100 SHORT TERM PAVEMENT MARKING	70300150 SHORT TERM PAVEMENT MARKING REMOVAL	78003111 PERFORMED PLASTIC PAVEMENT MARKING, TYPE B - STANDARD - LINE 4" (YELLOW)	78003111 PERFORMED PLASTIC PAVEMENT MARKING, TYPE B - STANDARD - LINE 4" (WHITE)	78011025 GROOVING FOR RECESSED PAVEMENT MARKING 5"
STATION TO STATION		FOOT	FOOT	SQ FT	FOOT	FOOT	FOOT
STAGE 1	993+52.0 1008+81.0	570.00	1457.00	1072.5	-	-	-
STAGE 2	994+66.0 1007+78.0	575.00	1321.00	680.6	-	-	-
MAINLINE EB	999+22.0 1003+14.0	-	-	-	392.0	392.0	784.0
MAINLINE WB	999+36.0 1003+14.0	-	-	-	378.0	378.0	756.0
TOTALS:		1150	2780	1760	1540		1540

PAVING SCHEDULE		40600290 BITUMINOUS MATERIALS (TACK COAT)	40604164 POLYMERIZED HOT- MIX ASPHALT SURFACE COURSE, IL- 9.5, MIX "D", N90	44000155 HOT-MIX ASPHALT SURFACE REMOVAL, 1.5"
STATION TO STATION		POUND	TON	SQ YD
999+22.0	999+86.7	68.9	8.6	102.1
999+36.0	999+86.7	78.3	9.7	116.0
1002+50.2	1003+14.0	95.7	11.9	141.8
1002+50.2	1003+14.0	63.6	7.9	94.2
TOTALS:		310	40	460

REV. - MS

USER NAME = jessica.hille	DESIGNED - LMH	REVISED -	STATE OF ILLINOIS DEPARTMENT OF TRANSPORTATION	SCHEDULE OF QUANTITIES			F.A.I. RTE.	SECTION	COUNTY	TOTAL SHEETS	SHEET NO.
DRAWN - LMH	REVISED -	57					*	FAYETTE	26	5	
PLOT SCALE = 100,0000 ' / in.	CHECKED -	REVISED -		SCALE: NO SCALE SHEET OF SHEETS STA. TO STA.			CONTRACT NO. 74B31				
PLOT DATE = 8/30/2023	DATE - 8/30/2023	REVISED -					ILLINOIS FED. AID PROJECT				

LEGEND



DIRECTION OF TRAFFIC FLOW

☐ STRUCTURE 026-0071
STATION 1001+18.31

2035+00

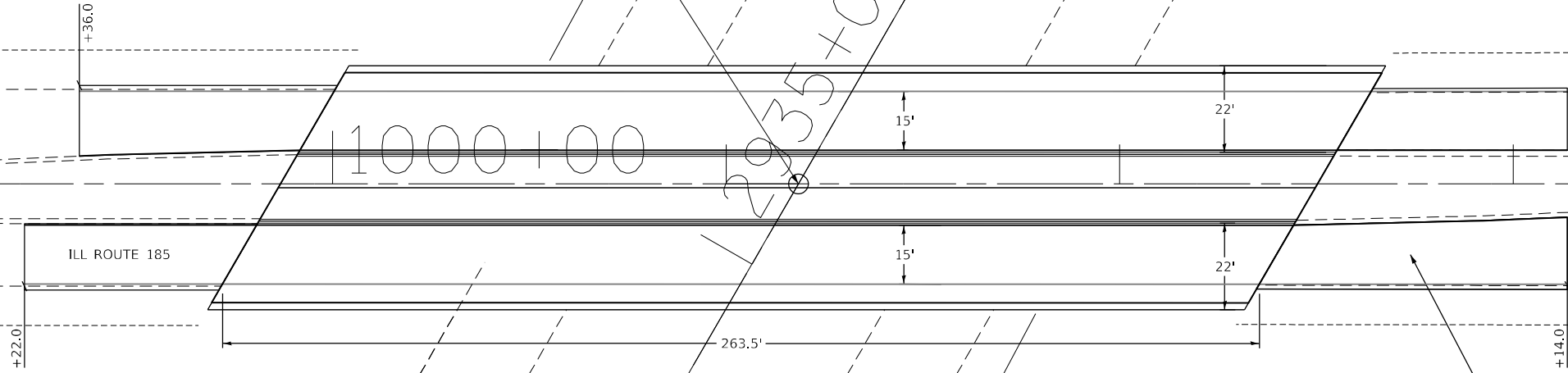
1000+00

ILL ROUTE 185

ILL ROUTE 185

HMA SURFACE REMOVAL, 1½" &
POLYMERIZED HMA SURFACE COURSE, IL-9.5, MIX "D", N90, 1½"

NOTE: MILL AND PAVE 1' BEYOND THE EXISTING JOINT
BETWEEN PAVEMENT AND SHOULDER.



SB INTERSTATE 57

NB INTERSTATE 57

MODEL: Default
 FILE: \\naulc01-pw-beadfab.com\P\IN\DOT\Documents\DOT Offices\Director_7\Projects\74B31\CADD\Drawings\CAD\Sheet\74B31-1-Plan.dwg

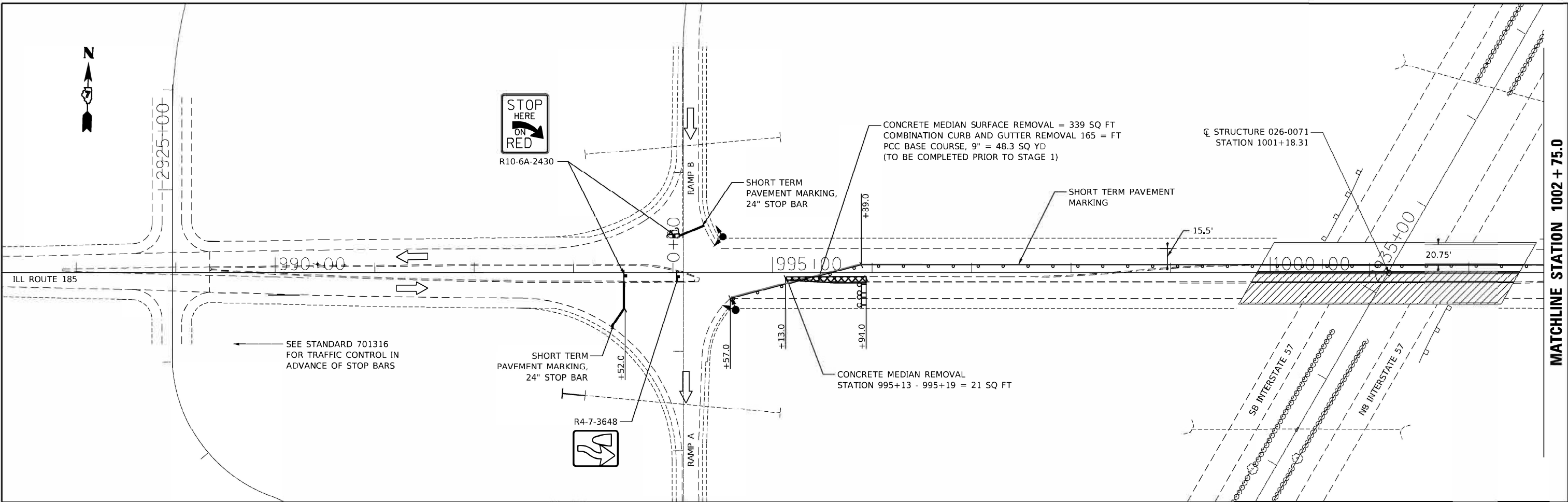
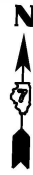
USER NAME = jessica.hille	DESIGNED - LMH	REVISED -
DRAWN - LMH	REVISOR -	REVISOR -
PLOT SCALE = 40,0000' / in.	CHECKED -	REVISOR -
PLOT DATE = 8/30/2023	DATE - 8/30/2023	REVISOR -

**STATE OF ILLINOIS
DEPARTMENT OF TRANSPORTATION**

**PLAN SHEET
SN 026-0071**

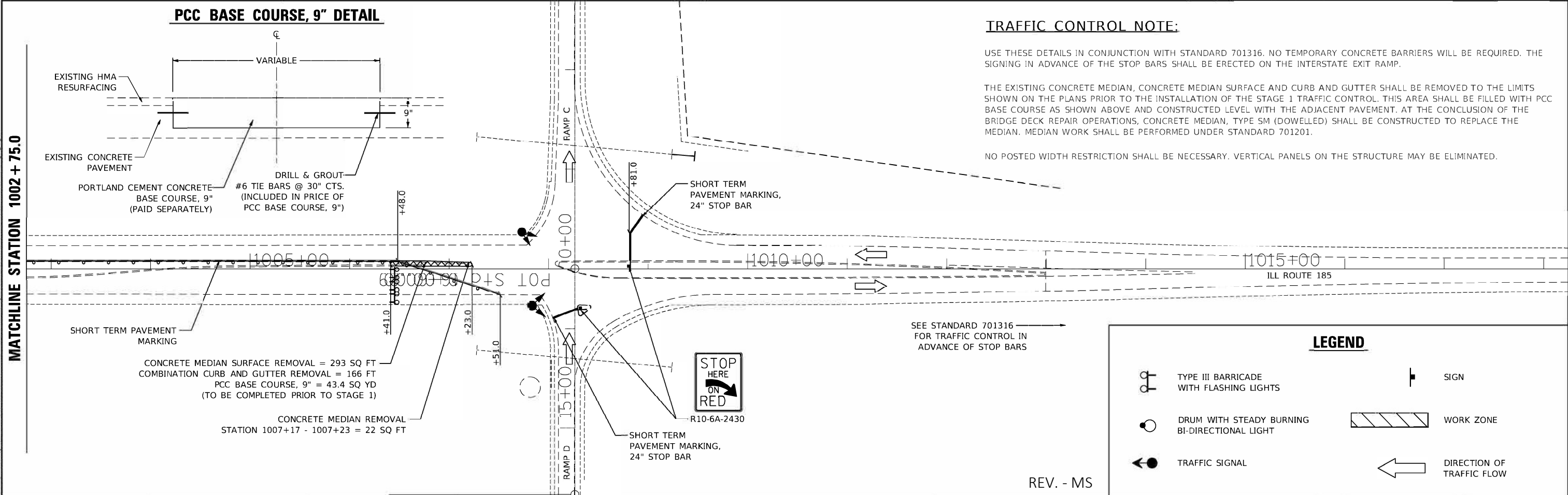
SCALE: 40,0000' / in. SHEET OF SHEETS STA. TO STA.

F.A.I. RTE.	SECTION	COUNTY	TOTAL SHEETS	SHEET NO.
57	*	FAYETTE	26	6
			CONTRACT NO. 74B31	
			ILLINOIS FED. AID PROJECT	



MATCHLINE STATION 1002 + 75.0

PCC BASE COURSE, 9" DETAIL



TRAFFIC CONTROL NOTE:

USE THESE DETAILS IN CONJUNCTION WITH STANDARD 701316. NO TEMPORARY CONCRETE BARRIERS WILL BE REQUIRED. THE SIGNING IN ADVANCE OF THE STOP BARS SHALL BE ERCTED ON THE INTERSTATE EXIT RAMP.

THE EXISTING CONCRETE MEDIAN, CONCRETE MEDIAN SURFACE AND CURB AND GUTTER SHALL BE REMOVED TO THE LIMITS SHOWN ON THE PLANS PRIOR TO THE INSTALLATION OF THE STAGE 1 TRAFFIC CONTROL. THIS AREA SHALL BE FILLED WITH PCC BASE COURSE AS SHOWN ABOVE AND CONSTRUCTED LEVEL WITH THE ADJACENT PAVEMENT. AT THE CONCLUSION OF THE BRIDGE DECK REPAIR OPERATIONS, CONCRETE MEDIAN, TYPE SM (DOWELLED) SHALL BE CONSTRUCTED TO REPLACE THE MEDIAN. MEDIAN WORK SHALL BE PERFORMED UNDER STANDARD 701201.

NO POSTED WIDTH RESTRICTION SHALL BE NECESSARY. VERTICAL PANELS ON THE STRUCTURE MAY BE ELIMINATED.

LEGEND

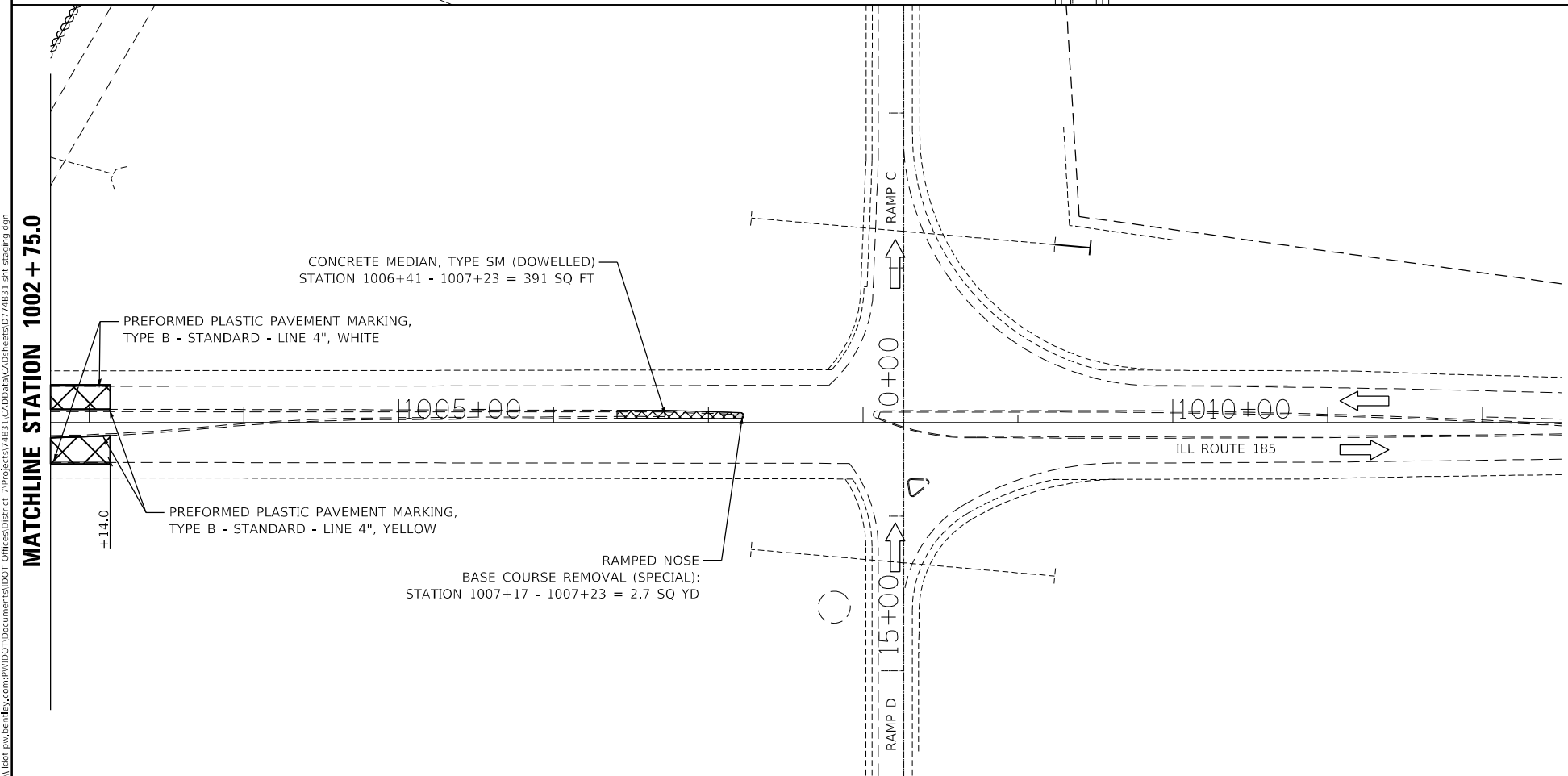
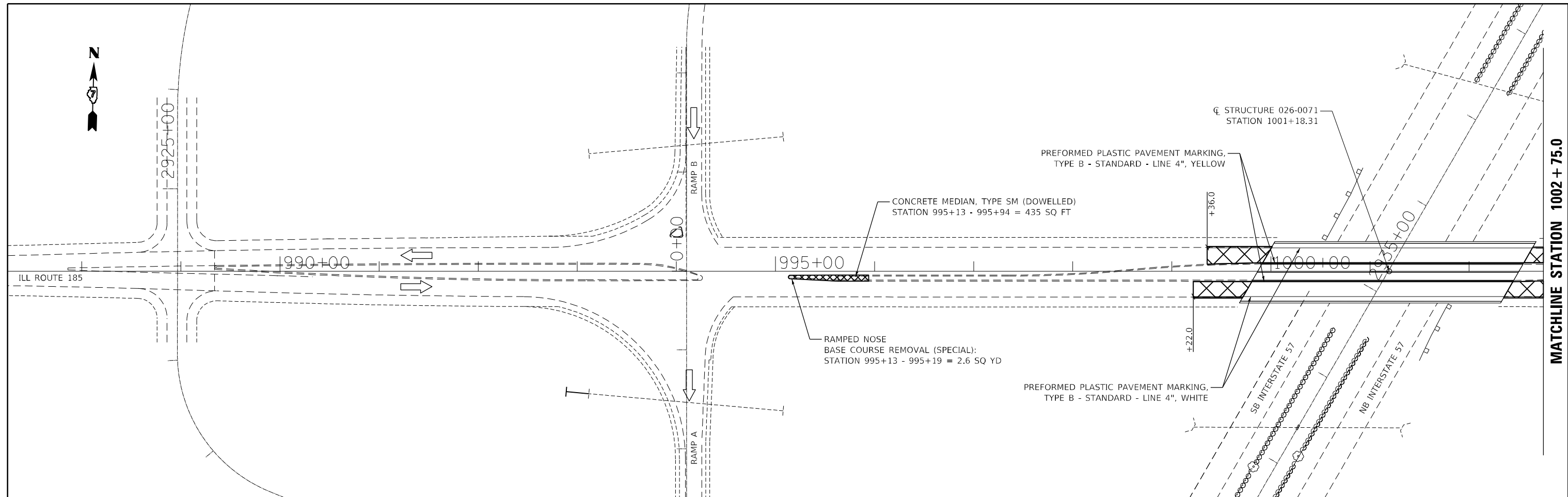
- TYPE III BARRICADE WITH FLASHING LIGHTS
- DRUM WITH STEADY BURNING BI-DIRECTIONAL LIGHT
- TRAFFIC SIGNAL
- SIGN
- WORK ZONE
- DIRECTION OF TRAFFIC FLOW

REV. - MS

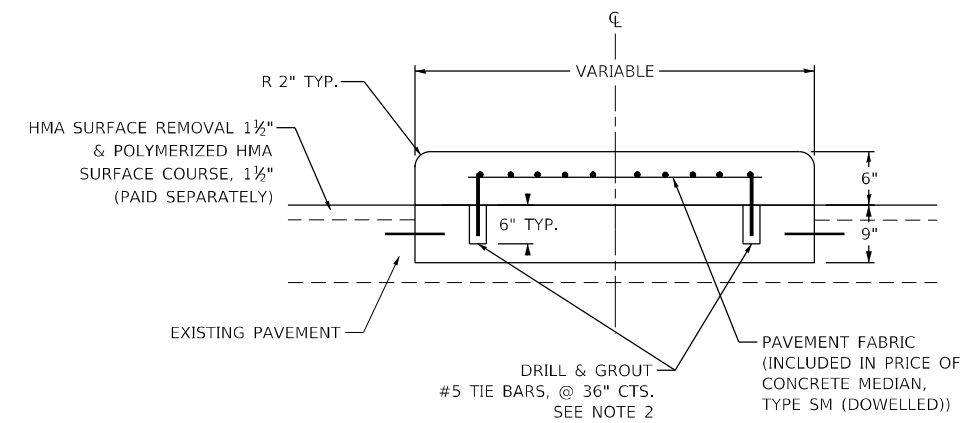
MATCHLINE STATION 1002 + 75.0

USER NAME = jessica.hille DESIGNED - LMH DRAWN - LMH PLOT SCALE = 100.0000' / in. PLOT DATE = 8/30/2023	DESIGNED - LMH DRAWN - LMH CHECKED - DATE = 8/30/2023	REVISED - REVISED - REVISED - REVISED -	STATE OF ILLINOIS DEPARTMENT OF TRANSPORTATION	STAGE 1 TRAFFIC CONTROL STANDARD 701316 (SPECIAL)	F.A.I. R.T.E. 57 SECTION * COUNTY FAYETTE TOTAL SHEETS 26 SHEET NO. 7 CONTRACT NO. 74B31	SCALE: 100.0000' / in SHEET OF SHEETS STA. TO STA.	ILLINOIS FED. AID PROJECT
---	--	--	---	--	---	--	---------------------------

* D7 BRIDGE REPAIRS 2024-5

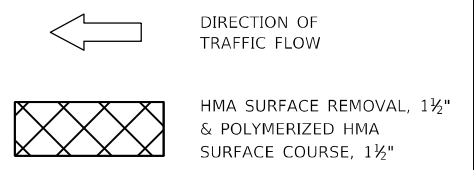


DETAIL OF CONCRETE MEDIAN, TYPE SM (DOWELLED)



- NOTES**
- CONCRETE MEDIAN, TYPE SM (DOWELLED) SHALL BE CONSTRUCTED IN ACCORDANCE WITH THE APPLICABLE PORTIONS OF STATE STANDARD 606301 AND SECTION 606 OF THE STANDARD SPECIFICATIONS.
 - DOWEL BARS @ 36" CTS. OR AS DIRECTED BY THE ENGINEER. TIE BARS, DRILL & GROUT TO BE INCLUDED IN THE PRICE PER SQ FT CONCRETE MEDIAN, TYPE SM (DOWELLED).

LEGEND



MODEL: Default
 FILE: \\naulc\p\project\74831\CADD\DATA\CAD\Sheet\DOT\74831-1-1-2023.dwg
 PROJECT: 74831
 SHEET: 26 OF 26
 DATE: 8/30/2023

USER NAME = jessica.wille	DESIGNED - LMH	REVISED -
DRAWN - LMH	REVISED -	
PLOT SCALE = 100,0000' / in.	CHECKED -	REVISED -
PLOT DATE = 8/30/2023	DATE - 8/30/2023	REVISED -

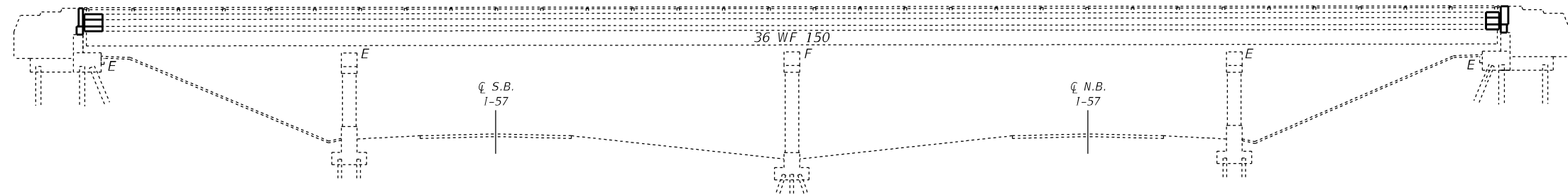
**STATE OF ILLINOIS
DEPARTMENT OF TRANSPORTATION**

**POST-STAGE
TRAFFIC CONTROL STANDARD 701201, 701301, & 701311**

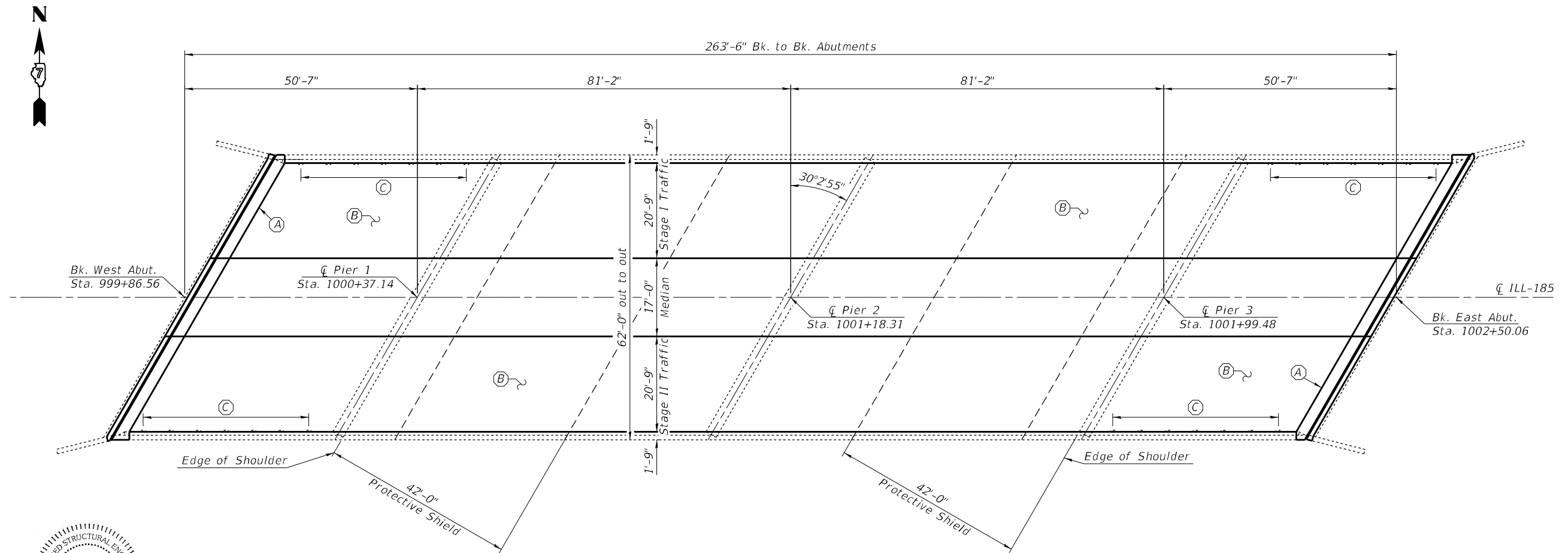
SCALE: 100,0000' / in. SHEET OF SHEETS STA. TO STA.

F.A.I. RTE.	SECTION	COUNTY	TOTAL SHEETS	SHEET NO.
57	*	FAYETTE	26	9
CONTRACT NO. 74B31				

EXISTING STRUCTURE: SN 026-0071 carries ILL 185 over FAI 57. The four span, steel I-beam structure was built in 1969. The existing microsilica concrete overlay was installed in 1998. The proposed project consists of replacement of the expansion joints with new strip seals, structural repair of concrete abutments, replacement of deck drains, full depth deck patching, curb repair, scarification, concrete overlay, & diamond grinding.

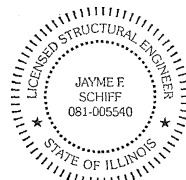


ELEVATION



PLAN

- (A) - Remove Existing Joints and Construct Strip Seal Expansion Joint
- (B) - Bridge Deck Scarification 2 1/4", Deck Patching, Bridge Deck Fly Ash or GGBF Slag Concrete Overlay 2 1/2", Diamond Grinding (Bridge Section), & Bridge Deck Grooving (Longitudinal)
- (C) - Remove and Replace Existing Floor Drains



Expires 11-30-2024

Jayme F. Schiff

STATE OF ILLINOIS
DEPARTMENT OF TRANSPORTATION

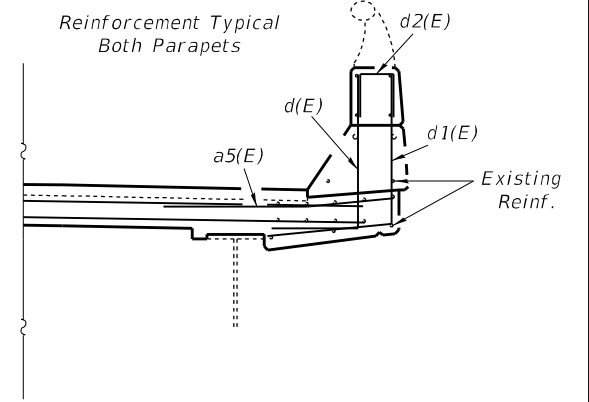
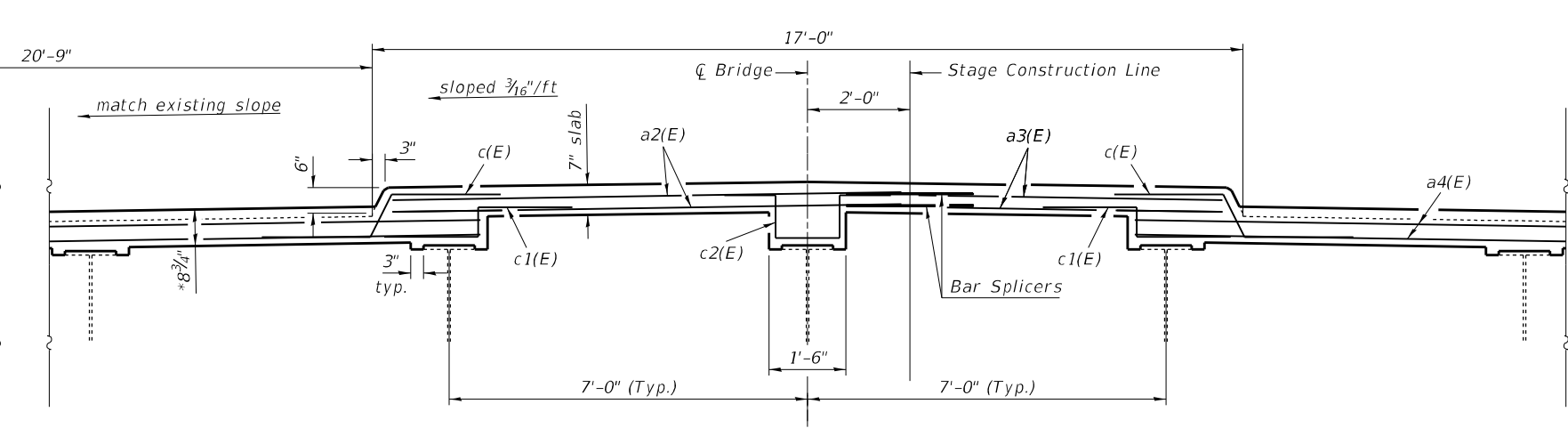
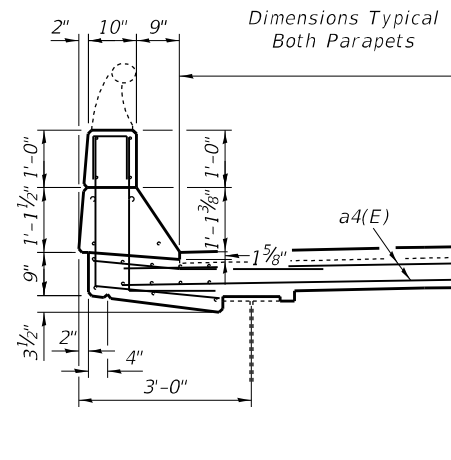
GENERAL PLAN & ELEVATION
S.N. 026-0071

F.A.J. RTE.	SECTION	COUNTY	TOTAL SHEETS	SHEET NO.
57	D7 BRIDGE REPAIRS 2024-5	FAYETTE	26	10
			CONTRACT NO. 74B31	

SCALE: 100,0000' / 1" SHEET 1 OF 13 SHEETS STA. TO STA.

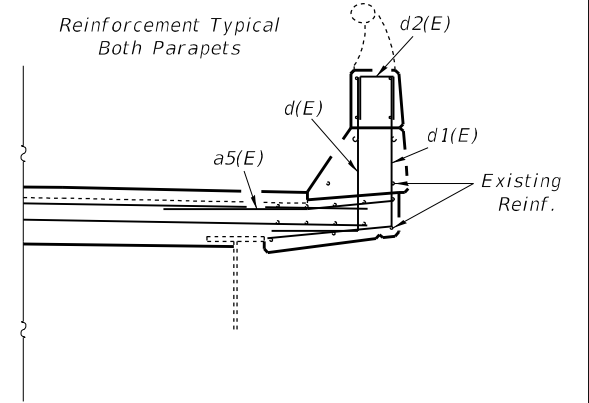
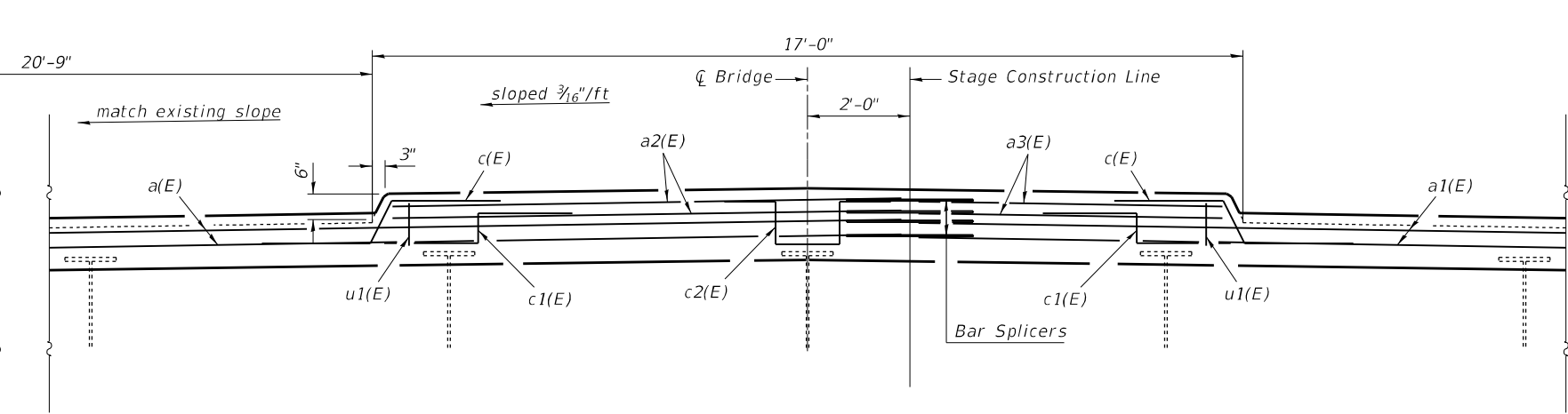
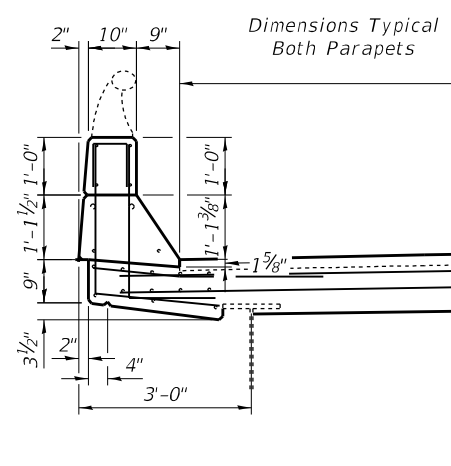
ILLINOIS FED. AID PROJECT

MODEL: Default FILE: \\nafe-pw-bentley.com\PIV\DOT\Documents\DOT_Offices\District_7\Projects\74B31\CAD\Drawings\CAD\Sheet\0744B31-1-Plan\bridge_repair

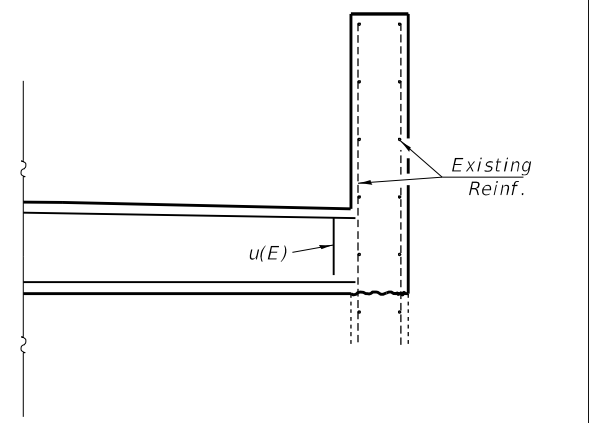
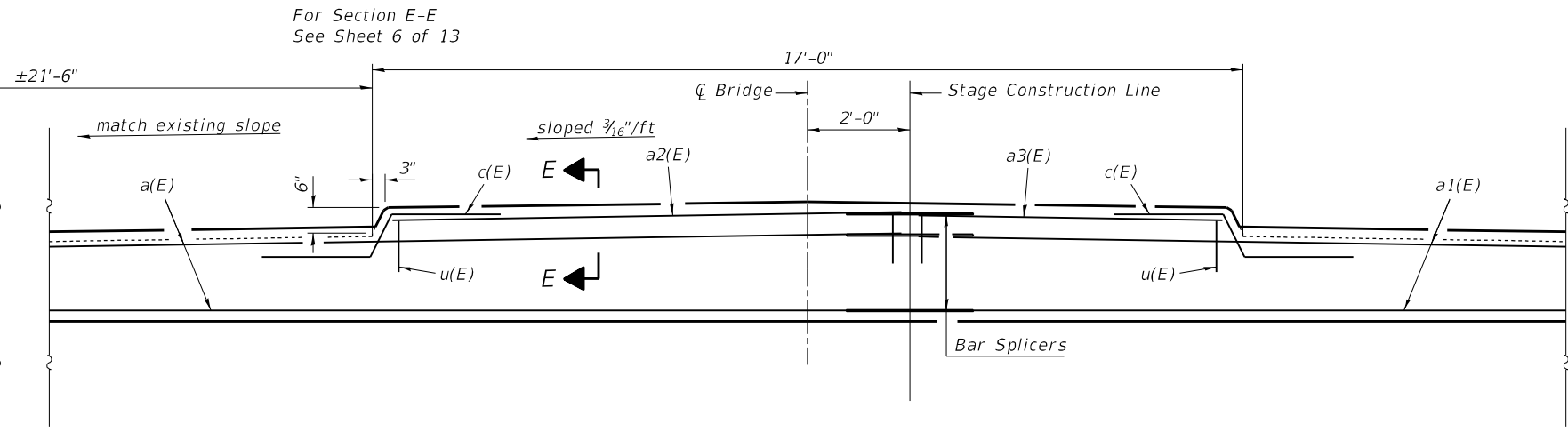
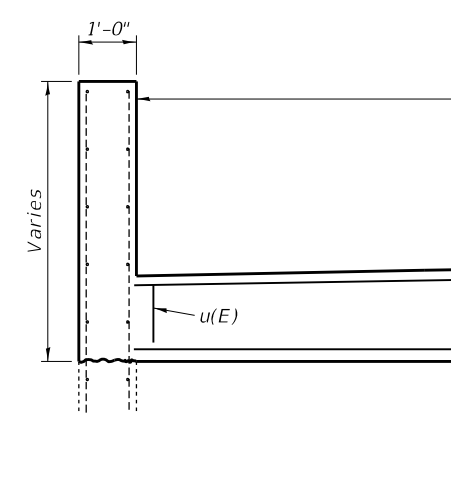


* Overlay thickness prior to grinding

SECTION THRU END OF DECK SLAB
Looking West



SECTION THRU END OF DECK AT DIAPHRAGM
Looking West



For Section E-E
See Sheet 6 of 13

SECTION THRU ABUTMENT AT JOINT
Looking West

MODEL: Default
 FILE: 3dmodel.pia
 SUBJECT: new beam.fem, com
 PIV: I:\DOT\Documents\DOT Office\Dir\Dir: 7\Project\74831\CADD\Drawings\CAD\Sheet\74831-4-bridge_repair

USER NAME = jessica.hille	DESIGNED - T. Walk	REVISED -
DRAWN - T. Walk	REVISED -	
PLOT SCALE = 100,0000' / in.	CHECKED - D. Macklin	REVISED -
PLOT DATE = 8/30/2023	DATE - August 2022	REVISED -

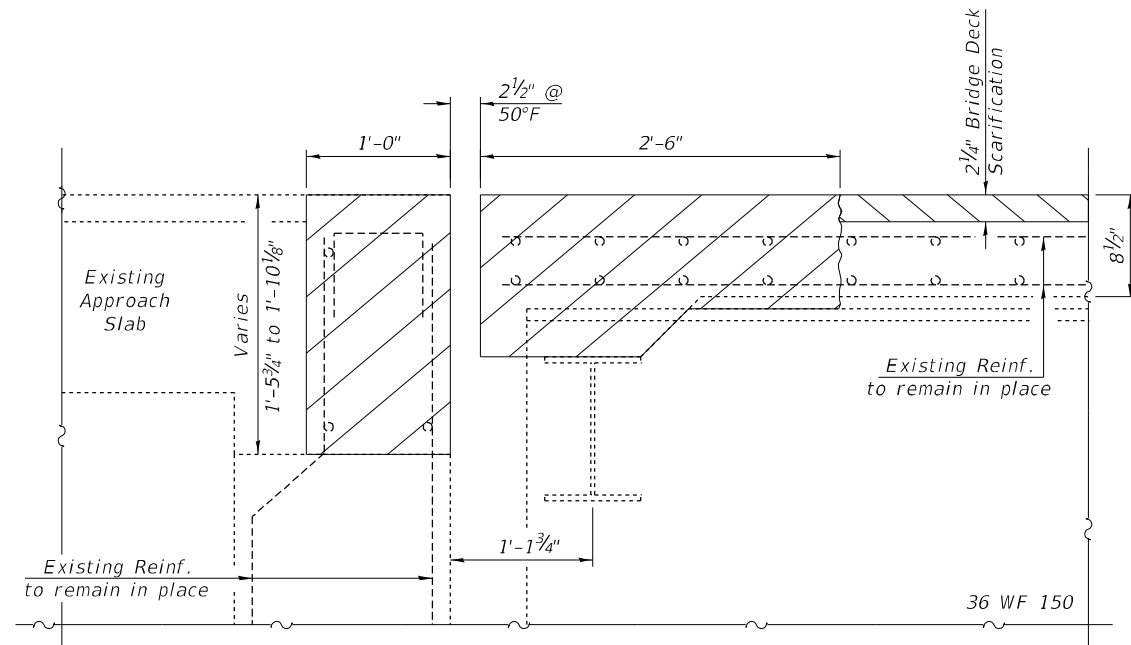
**STATE OF ILLINOIS
DEPARTMENT OF TRANSPORTATION**

**EXPANSION JOINT REPLACEMENT DETAILS
S.N. 026-0071**

SCALE: 100,0000' / in SHEET 4 OF 13 SHEETS STA. TO STA.

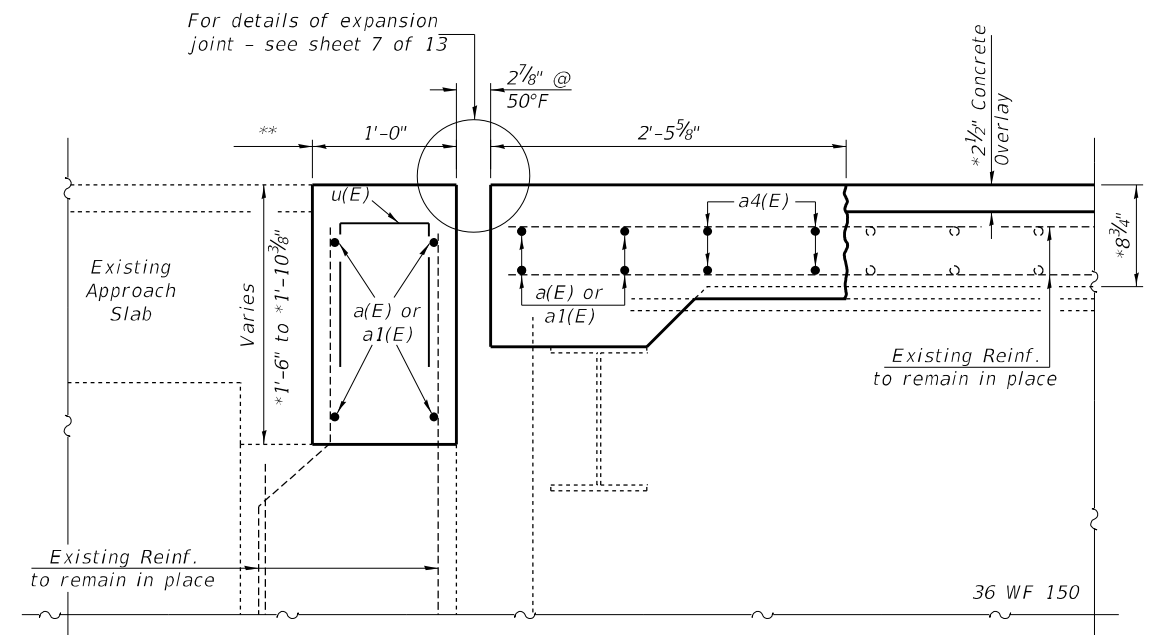
F.A.J. RTE.	SECTION	COUNTY	TOTAL SHEETS	SHEET NO.
57	D7 BRIDGE REPAIRS 2024-5	FAYETTE	26	13
CONTRACT NO. 74831				
ILLINOIS FED. AID PROJECT				

Note: Hatched areas indicate removal



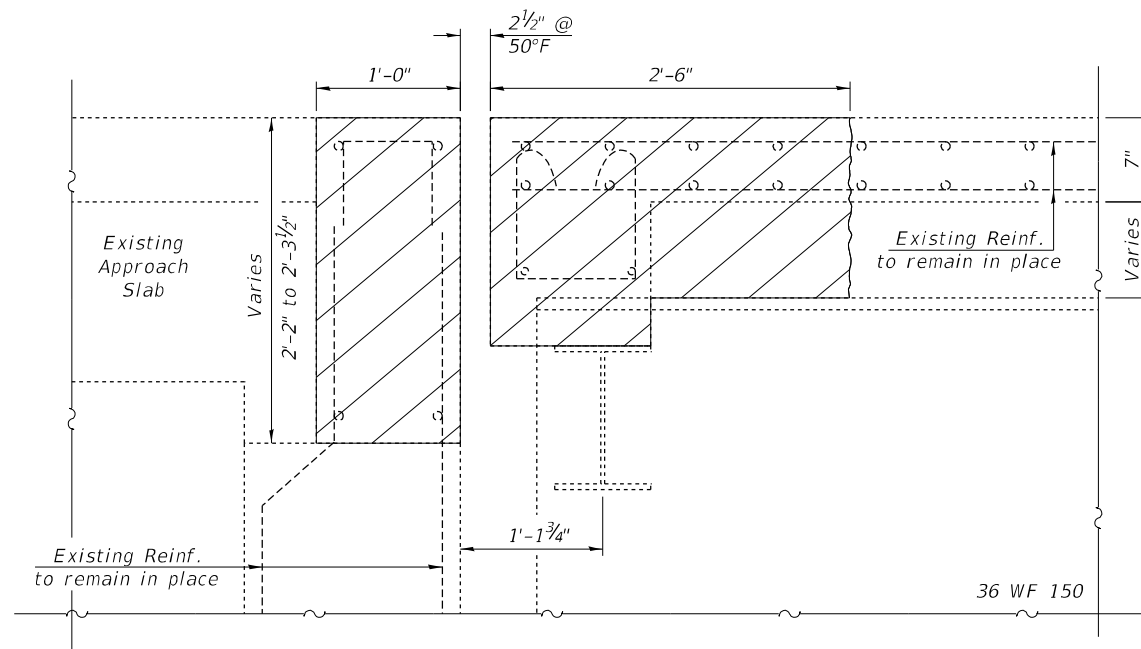
SECTION A-A

** Deterioration or damage to the existing HMA surface beyond this interface shall not be repaired with concrete, but shall instead be repaired with HMA Surface Course as directed by the Engineer. This repair shall be paid for as Extra Work according to Article 109.04 of the Standard Specifications.

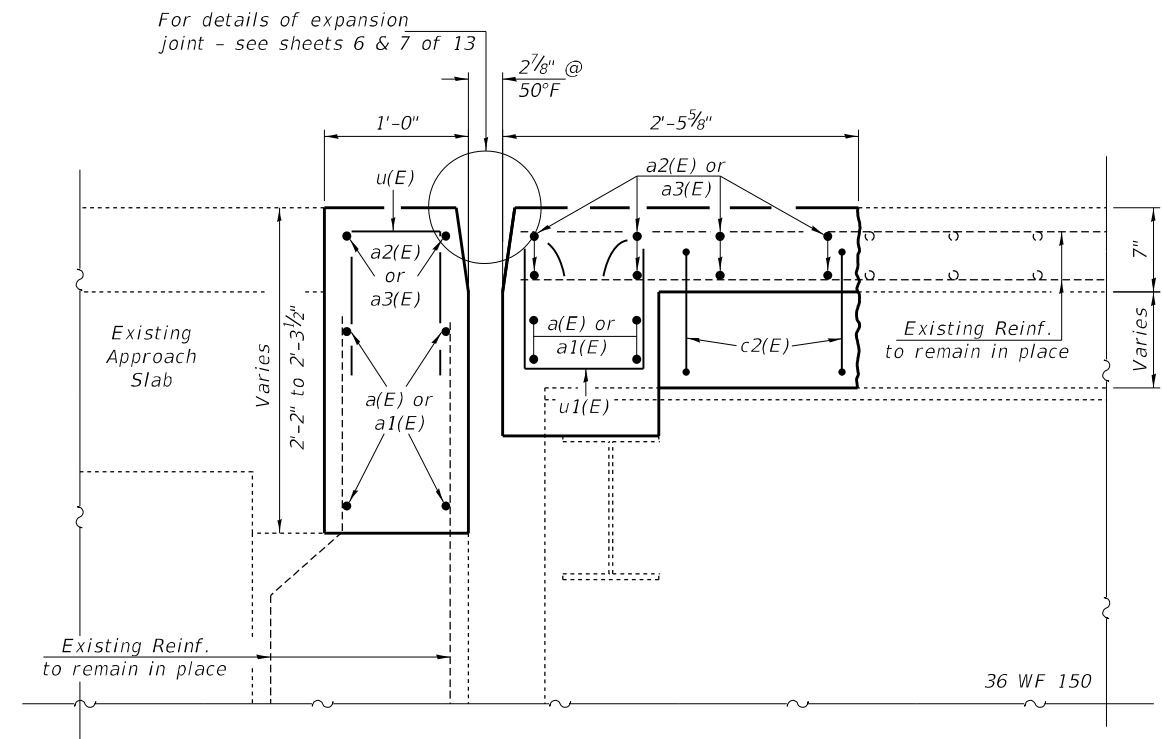


SECTION C-C

* Overlay thickness prior to grinding



SECTION B-B



SECTION D-D

MODEL: Default
 FILE: \\naulpc-pw-backend\com\PIV\DOT\Documents\DOT_Offices\Director_7\Projects\74831\CADD\Drawings\CAD\Sheet\74831-15-bridge_repair

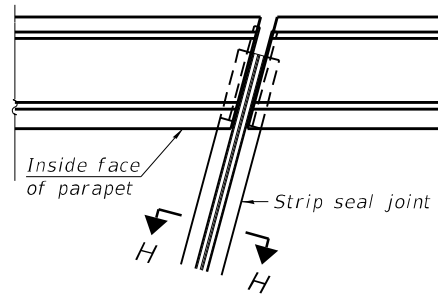
USER NAME = jessica.hille	DESIGNED - T. Walk	REVISED -
DRAWN - T. Walk	REVISED -	
PLOT SCALE = 100,0000' / in.	CHECKED - D. Macklin	REVISED -
PLOT DATE = 8/30/2023	DATE - August 2022	REVISED -

STATE OF ILLINOIS
DEPARTMENT OF TRANSPORTATION

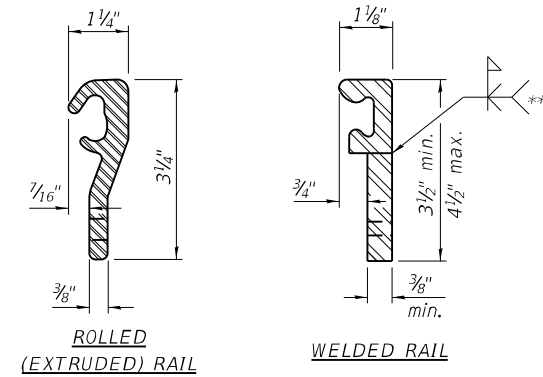
EXPANSION JOINT REPLACEMENT DETAILS
S.N. 026-0071

SCALE: 100,0000' / in SHEET 5 OF 13 SHEETS STA. TO STA.

F.A.J. RTE.	SECTION	COUNTY	TOTAL SHEETS	SHEET NO.
57	D7 BRIDGE REPAIRS 2024-5	FAYETTE	26	14
			CONTRACT NO. 74831	
		ILLINOIS	FED. AID PROJECT	



PLAN AT PARAPET



LOCKING EDGE RAILS

*** Back gouge not required if complete joint penetration is verified by mock-up.

Notes:

The strip seal shall be made continuous and shall have a minimum thickness of 1/4". The configuration of the strip seal shall match the configuration of the locking edge rails. Open or "webbed" strip seal gland configurations are not permitted. The gland shall be sized for a maximum rated movement of 4 inches.

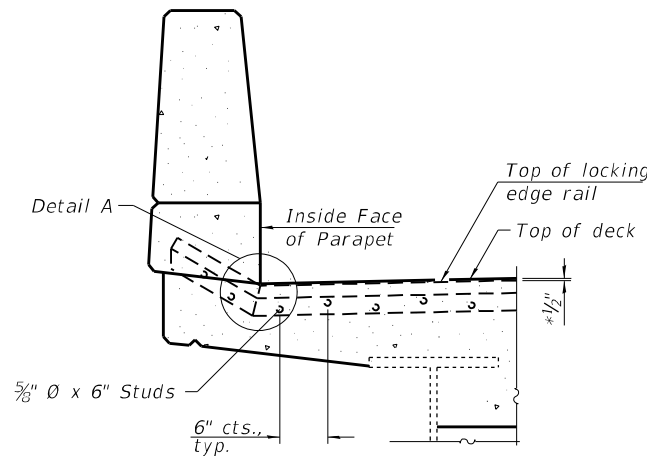
The locking edge rails depicted are configured for typical applications and are conceptual only. The actual configuration of the locking edge rails and matching strip seal may vary from manufacturer to manufacturer provided they fit the application and meet the minimum anchorage shown. Flanged edge rails, however, will not be allowed. Locking edge rails may exceed the 4 1/2" maximum depth provided the anchorage system is revised according to the manufacturer's recommendation.

The manufacturer's recommended installation methods shall be followed.

All steel components shall be galvanized after fabrication according to Article 520.03 of the Standard Specifications.

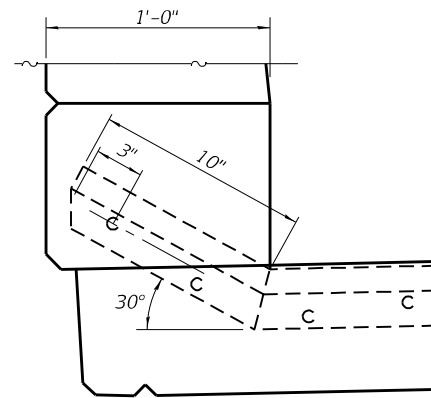
The Maximum space between locking edge rail segments shall be 3/16" and sealed with a suitable sealant; however, any rail joint within 10' measured perpendicular to the face of the curb or parapet shall be welded as shown in the locking edge rail splice detail.

The concrete opening below the strip seal will vary based on the locking edge rail chosen by the Contractor. Deck and parapet lengths shown elsewhere in the plans are dimensioned to the concrete opening, not the joint opening, and are based on the rolled locking edge rail. If the Contractor elects to use a different locking edge rail, dimensional adjustments may be required. One exception to this would be the strip seal joint at the end of the precast bridge approach slab. For these cases the pavement connector length shall be adjusted, not the length of the bridge approach slab.

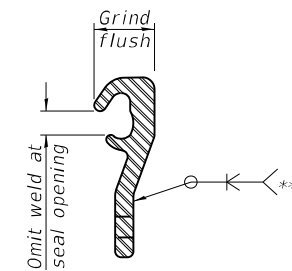


ELEVATION AT PARAPET

(Skews > 30° shown. Skews ≤ 30° similar except as shown in plan view.)



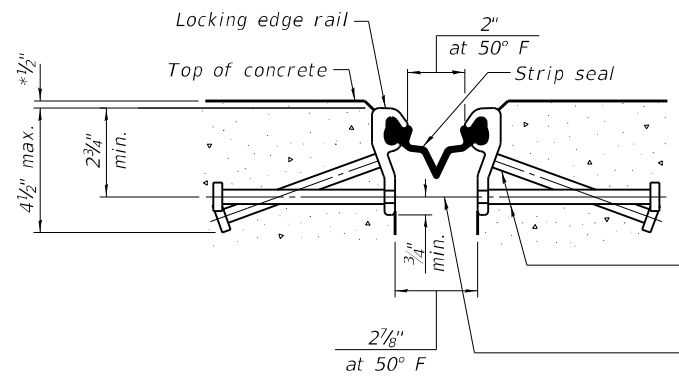
DETAIL A



LOCKING EDGE RAIL SPLICE

The inside of the locking edge rail groove shall be free of weld residue. Rolled rail shown, welded rail similar.

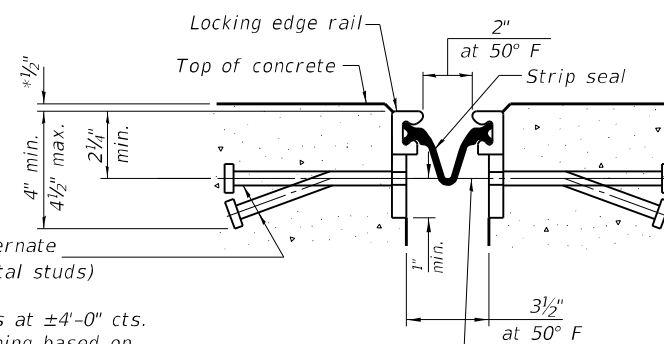
* Overlay thickness prior to grinding



SHOWING ROLLED RAIL JOINT

** 5/8" Ø x 6" studs @ 6" cts. (alternate angled/bent studs with horizontal studs)

3/8" Ø threaded rods in 7/16" Ø holes at ±4'-0" cts. for holding the proper joint opening based on the temperature during the deck pour. Place to miss studs. All rods shall be burned, or sawed off flush with the plates after concrete is set.



SHOWING WELDED RAIL JOINT

SECTION H-H

** Granular or solid flux filled headed studs conforming to Article 1006.32 of the Std. Specs., automatically end welded.

BILL OF MATERIAL

Item	Unit	Total
Preformed Joint Strip Seal	Foot	144

MODEL: Default
FILE: \\na11c:\pub\build\paw_bentley.com\PIV\DOT\Documents\1\DOT\Office\Dir\dir_7\Project\74831\CADD\DATA\CAD\Pre\ESTD\744831-1-1-bridge_repair

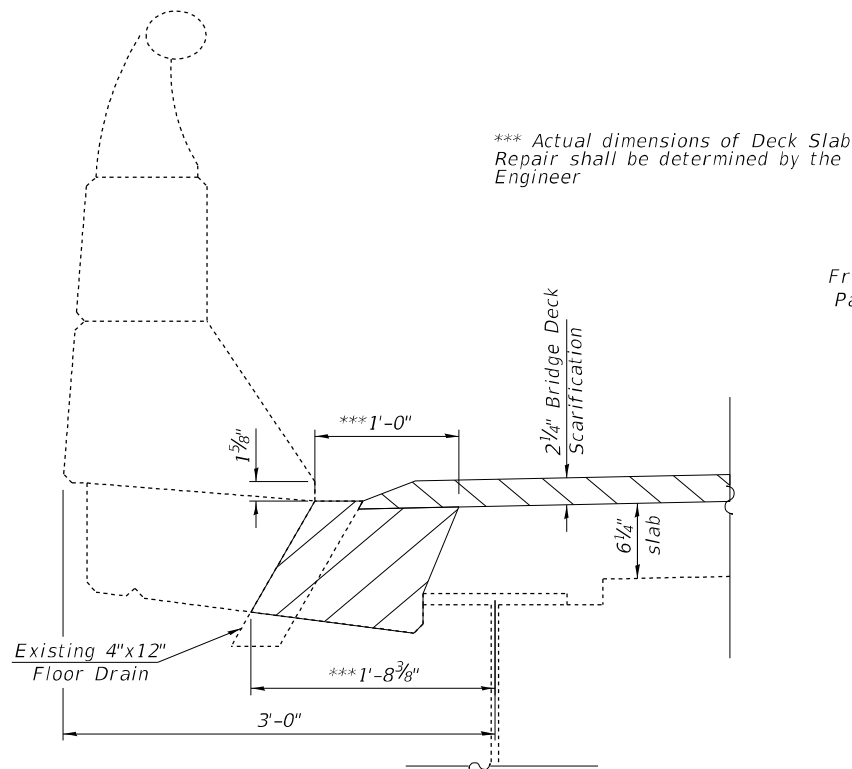
USER NAME = jessica.hille	DESIGNED - T. Walk	REVISED -
PLOT SCALE = 100,0000' / in.	DRAWN - T. Walk	REVISED -
PLOT DATE = 8/30/2023	CHECKED - D. Macklin	REVISED -
	DATE - August 2022	REVISED -

**STATE OF ILLINOIS
DEPARTMENT OF TRANSPORTATION**

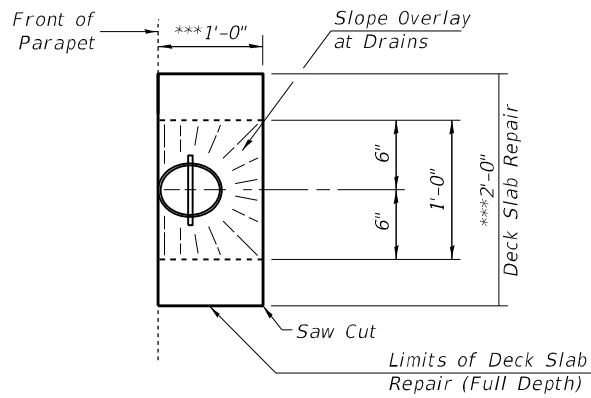
**PREFORMED JOINT STRIP SEAL DETAIL
S.N. 026-0071**

SCALE: 100,0000' / in SHEET 7 OF 13 SHEETS STA. TO STA.

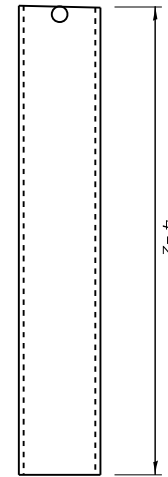
F.A.J. RTE.	SECTION	COUNTY	TOTAL SHEETS	SHEET NO.
57	D7 BRIDGE REPAIRS 2024-5	FAYETTE	26	16
			CONTRACT NO. 74831	
		ILLINOIS	FED. AID PROJECT	



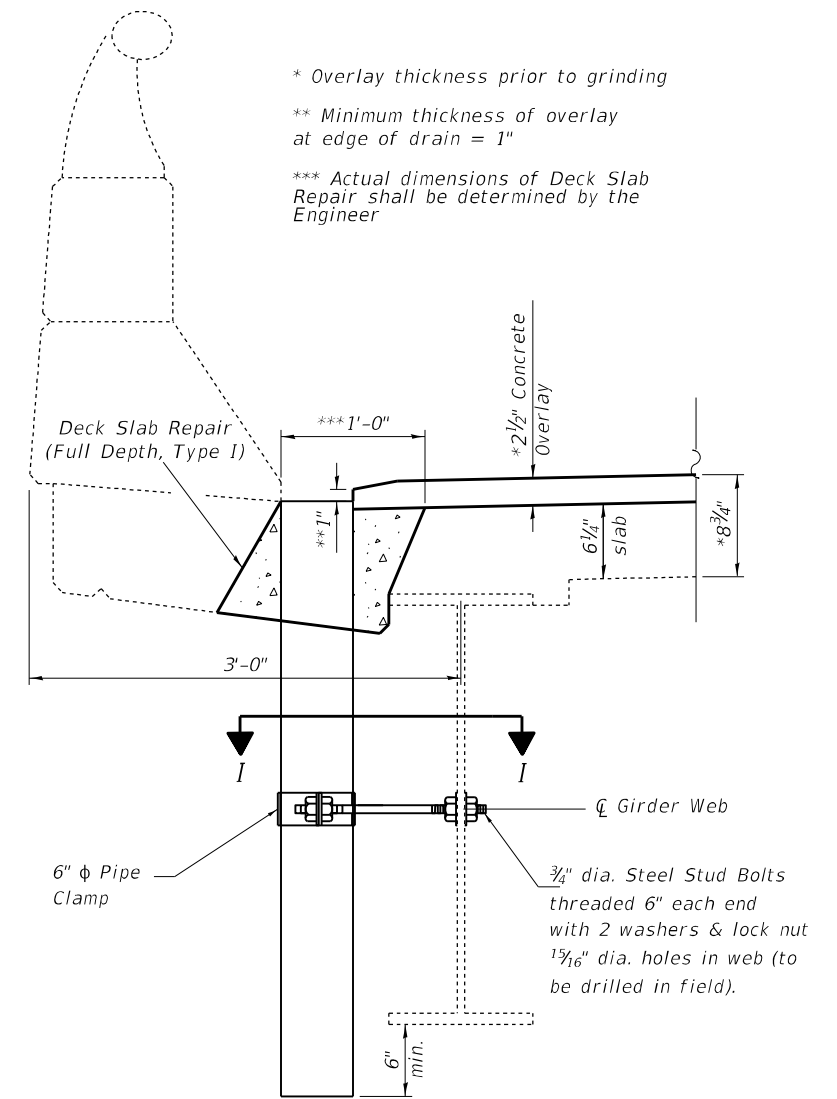
SECTION THRU EXISTING FLOOR DRAIN



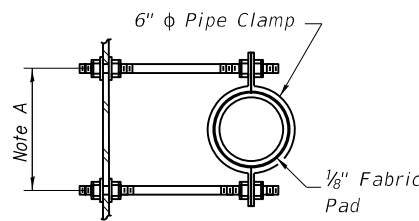
TOP PLAN DECK REPAIR AT PROPOSED DRAINS



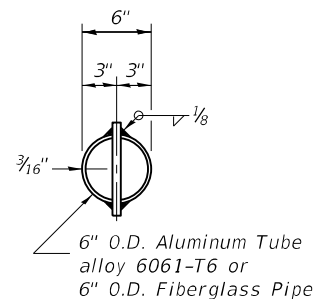
DRAIN DETAIL
20 Required



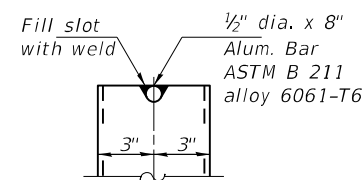
DRAIN REPLACEMENT DETAIL



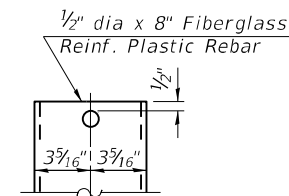
SECTION I-I



TOP PLAN



ALUMINUM TUBE



FIBERGLASS PIPE

NOTES

Fiberglass pipe shall conform to ASTM D 2996, with short-time rupture strength hoop tensile stress of 30,000 p.s.i. minimum.

Galvanize clamping device according to AASHTO M232. Cost of clamping device, bolts and galvanizing is included with Floor Drains.

Concrete removal and replacement quantities and locations for drains are included in Deck Slab Repair (Full Depth, Type I) as shown on "Bridge Deck Patching" see sheets 9 & 10 of 13.

The exterior surfaces of the floor drains shall be painted with the finish coat as specified in the special provisions for Cleaning and Painting New Metal Structures. The exterior surfaces of the drains shall be cleaned according to the Society of Protective Coatings' Spec. SSPC-SP1 prior to painting.

MODEL: Default
FILE: \\naulc\paw\beach\paw.com\PIV\DOT\Documents\DOT\Office\Director_T\Projects\74831\CADD\Drawings\CADD\Sheet\0744831-1-1-bridge_repair

USER NAME = jessica.wille	DESIGNED - T. Walk	REVISED -
	DRAWN - T. Walk	REVISED -
PLOT SCALE = 100,0000' / in.	CHECKED - D. Macklin	REVISED -
PLOT DATE = 8/30/2023	DATE - August 2022	REVISED -

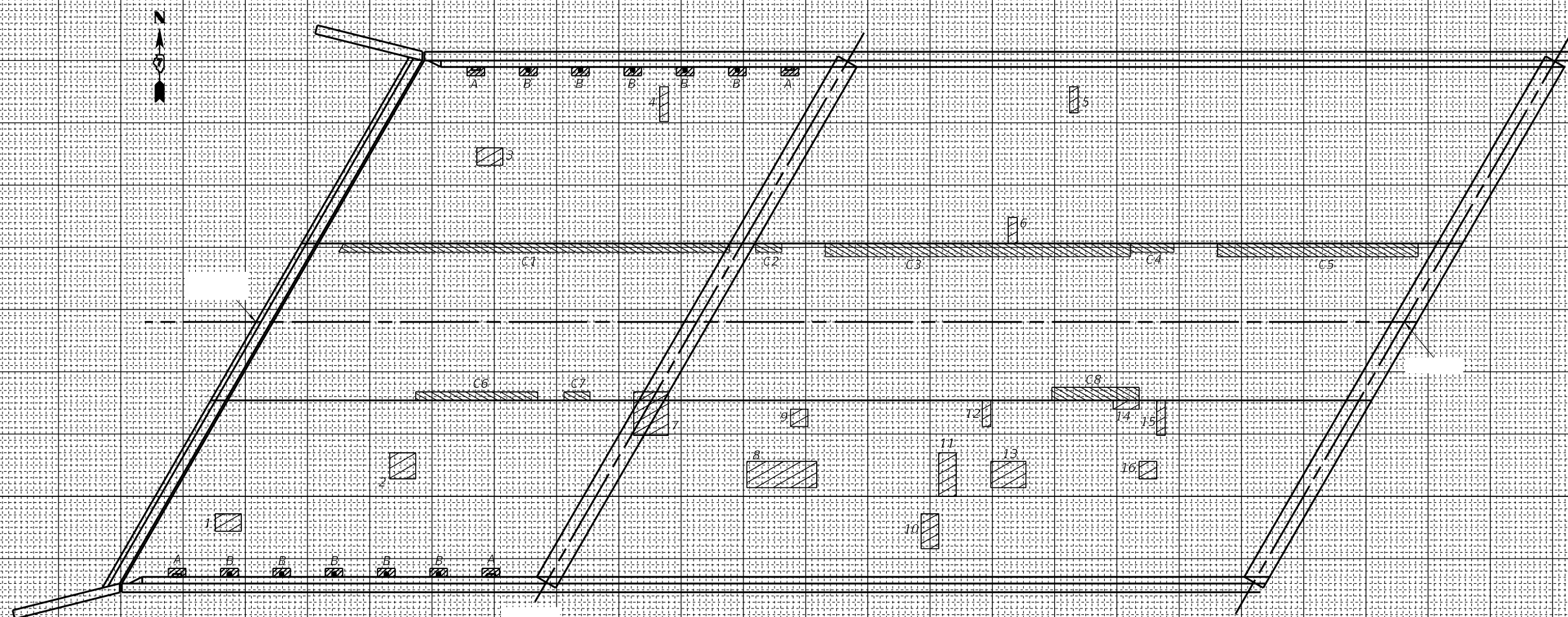
STATE OF ILLINOIS
DEPARTMENT OF TRANSPORTATION

DECK DRAIN REPLACEMENT DETAILS
S.N. 026-0071

SCALE: 100,0000' / in SHEET 8 OF 13 SHEETS STA. TO STA.

F.A.J. RTE.	SECTION	COUNTY	TOTAL SHEETS	SHEET NO.
57	D7 BRIDGE REPAIRS 2024-5	FAYETTE	26	17
			CONTRACT NO. 74831	
ILLINOIS FED. AID PROJECT				

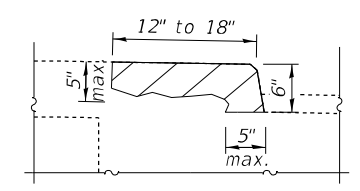
MODEL: Default
 FILE NAME: p:\w\p\w\benley.com\FY2021\Documents\DOT - Offices\District 7\Projects\74831\CAD\DATA\CAD\tees\07141831\west-halve-repair



PATCH NO.	SIZE		DECK SLAB REPAIR (FD TY I)	DECK SLAB REPAIR (FD TY II)
	LENGTH	WIDTH	SQ YD	SQ YD
1	3.0	2.0		0.7
2	3.0	3.0		1.0
3	3.0	2.0		0.7
4	1.0	4.0	0.4	
5	1.0	3.0	0.3	
6	1.0	3.0	0.3	
7	4.0	4.0		1.8
8	8.0	3.0		2.7
9	2.0	2.0	0.4	
10	2.0	4.0		0.9
11	2.0	5.0		1.1
12	1.0	3.0	0.3	
13	4.0	3.0		1.3
14	3.0	1.0	0.3	
15	1.0	4.0	0.4	
16	2.0	2.0	0.4	

PATCH NO.	SIZE		DECK SLAB REPAIR (FD TY I)	DECK SLAB REPAIR (FD TY II)
	LENGTH	WIDTH	SQ YD	SQ YD
A - Remove Drain, 4 ea			0.9	
B- Replace Drain, 10 ea			2.2	
TOTAL ROUNDS TO:			7.0	11.0

PATCH NO.	SIZE			STRUC. REPAIR OF CONCRETE (DEPTH ≤ 5")
	LENGTH	WIDTH	HEIGHT	
C1	41.0	1.0	0.5	61.5
C2	3.0	1.0	0.5	4.5
C3	35.0	1.5	0.5	70.0
C4	5.0	1.0	0.5	7.5
C5	23.0	1.5	0.5	46.0
C6	14.0	1.0	0.5	21.0
C7	3.0	1.0	0.5	4.5
C8	10.0	1.5	0.5	20.0
TOTAL ROUNDS TO:				235

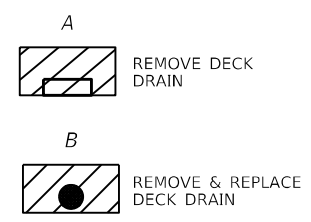


Curb Repair Detail
 Note: Max width 18" for curb repair

ESTIMATED PAY QUANTITIES

DECK SLAB REPAIR (FULL DEPTH, TYPE I) = 7.0 SQ YD
 DECK SLAB REPAIR (FULL DEPTH, TYPE II) = 11.0 SQ YD
 STRUC. REPAIR OF CONCRETE (DEPTH ≤ 5") = 235 SQ FT
 FLOOR DRAINS = 10 EACH

A & B = Deck Slab Repair
 (Full Depth, Type I)
 2ft² = .22yd² Each



THE LOCATIONS AND SIZES SHOWN GRAPHICALLY ABOVE ARE APPROXIMATE. SEE THIS TABLE FOR ACTUAL SIZES.

DATE OF SURVEY: 7-12-2022
 SURVEY BY: DPM & TMW
 METHOD OF SURVEY: VISUAL

USER NAME = jessica.hille	DESIGNED - T. Walk	REVISED -
PLOT SCALE = 100,0000' / in.	DRAWN - T. Walk	REVISED -
PLOT DATE = 8/30/2023	CHECKED - D. Macklin	REVISED -
	DATE - August 2022	REVISED -

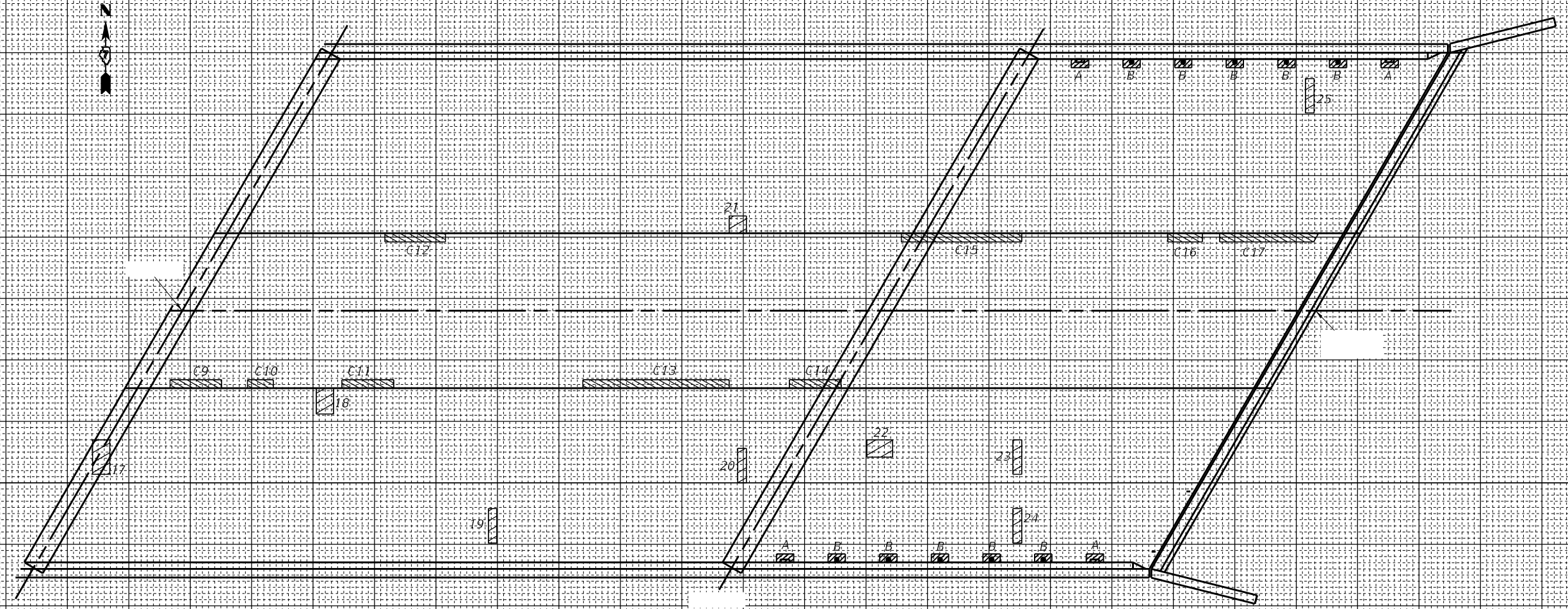
**STATE OF ILLINOIS
 DEPARTMENT OF TRANSPORTATION**

**BRIDGE DECK PATCHING, WEST HALF
 SN. 026-0071**

SCALE: 100,0000' / in SHEET 9 OF 13 SHEETS STA. TO STA.

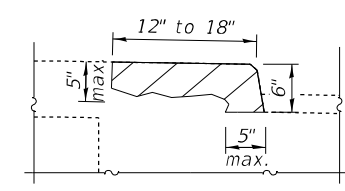
F.A.J. RTE.	SECTION	COUNTY	TOTAL SHEETS	SHEET NO.
57	D7 BRIDGE REPAIRS 2024-5	FAYETTE	26	18
CONTRACT NO. 74B31				
ILLINOIS FED. AID PROJECT				

MODEL: Default
 FILE NAME: p:\w\p\w\benley.com\FM\DOT\Documents\DOT - Offices\District 7\Projects\74831\CAD\data\CADs\ees\1714831-east-half-bridge-repair



PATCH NO.	SIZE		DECK SLAB REPAIR (FD TY I) SQ YD	DECK SLAB REPAIR (FD TY II) SQ YD
	LENGTH	WIDTH		
17	2.0	4.0		0.9
18	2.0	3.0		0.7
19	1.0	4.0	0.4	
20	1.0	4.0	0.4	
21	2.0	2.0	0.4	
22	3.0	2.0		0.7
23	1.0	4.0	0.4	
24	1.0	4.0	0.4	
25	1.4	4.0	0.4	
A - Remove Drain, 4 ea			0.9	
B - Replace Drain, 10 ea			2.2	
TOTAL ROUNDS TO:			6.0	3.0

PATCH NO.	SIZE		HEIGHT	STRUC. REPAIR OF CONCRETE (DEPTH ≤ 5') SQ FT
	LENGTH	WIDTH		
C9	6.0	1.0	0.5	9.0
C10	3.0	1.0	0.5	4.5
C11	6.0	1.0	0.5	9.0
C12	7.0	1.0	0.5	10.5
C13	17.0	1.0	0.5	25.5
C14	6.0	1.0	0.5	9.0
C15	14.0	1.0	0.5	21.0
C16	4.0	1.0	0.5	6.0
C17	11.0	1.0	0.5	16.5
TOTAL ROUNDS TO:				111

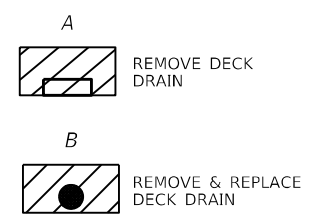


Curb Repair Detail
 Note: Max width 18" for curb repair

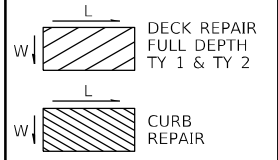
ESTIMATED PAY QUANTITIES

DECK SLAB REPAIR (FULL DEPTH, TYPE I) = 6.0 SQ YD
 DECK SLAB REPAIR (FULL DEPTH, TYPE II) = 3.0 SQ YD
 STRUC. REPAIR OF CONCRETE (DEPTH ≤ 5") = 111 SQ FT
 FLOOR DRAINS = 10 EACH

A & B = Deck Slab Repair (Full Depth, Type I)
 2ft² = .22yd² Each



THE LOCATIONS AND SIZES SHOWN GRAPHICALLY ABOVE ARE APPROXIMATE. SEE THIS TABLE FOR ACTUAL SIZES.



DATE OF SURVEY: 7-12-2022
 SURVEY BY: DPM & TMW
 METHOD OF SURVEY: VISUAL

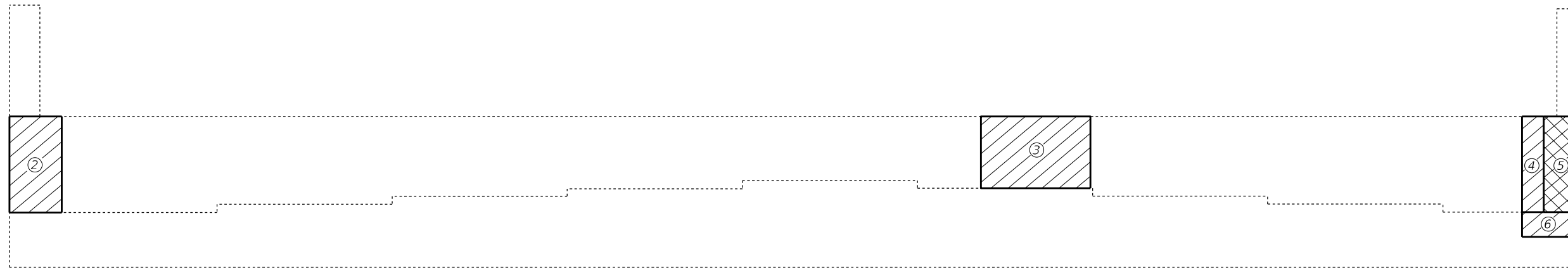
USER NAME = jessica.hille	DESIGNED - T. Walk	REVISED -
PLOT SCALE = 100,000' / in.	DRAWN - T. Walk	REVISED -
PLOT DATE = 8/30/2023	CHECKED - D. Macklin	REVISED -
	DATE - August 2022	REVISED -

**STATE OF ILLINOIS
 DEPARTMENT OF TRANSPORTATION**

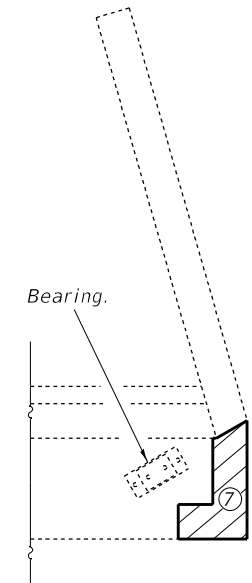
**BRIDGE DECK PATCHING, EAST HALF
 SN. 026-0071**

SCALE: 100,000' / in SHEET 10 OF 13 SHEETS STA. TO STA.

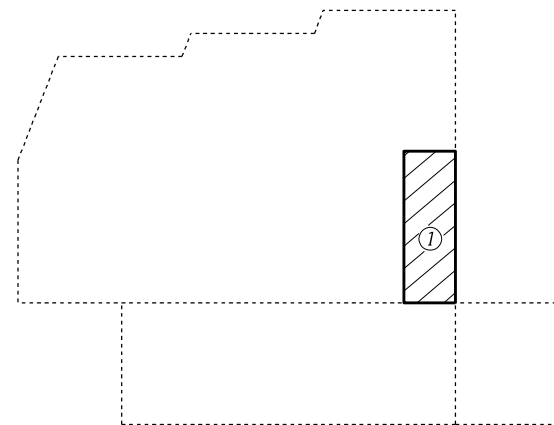
F.A.J. RTE.	SECTION	COUNTY	TOTAL SHEETS	SHEET NO.
57	D7 BRIDGE REPAIRS 2024-5	FAYETTE	26	19
CONTRACT NO. 74B31				
ILLINOIS FED. AID PROJECT				



WEST ABUTMENT
Looking West



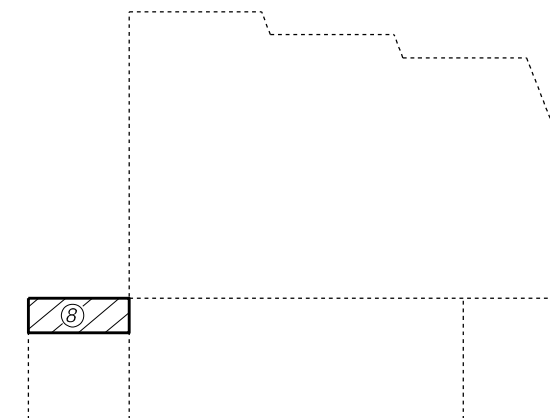
Abut. Cap



SOUTHWEST WINGWALL

STRUCTURAL REPAIR OF CONCRETE

Patch No.	Depth ≤ 5"	Depth > 5"
	SqFt	SqFt
1	7.0	
2	10.5	
3	17.5	
4	4.5	
5		7.0
6	2.5	
7	4.0	
8	3.0	
Total	50.0	7.0



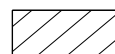
NORTHWEST WINGWALL

Notes

Quantities and locations are approximated. Actual quantities and locations to be determined in the field by the Engineer.

This work is intended to repair only areas of severe deterioration. Some minor deteriorated areas may be left unrepaired.

Do not disturb Bearings.



Structural Repair of Concrete (Depth ≤ 5")



Structural Repair of Concrete (Depth > 5")

MODEL: Default
 FILE: \\mace.pva\idirect-pw-bentley.com\PIV\DOT\Documents\DOT_offices\Dir\dir_7\Project\74B31\CADD\DATA\CAD\Sheet\0744B31-1-1-bridge_repair

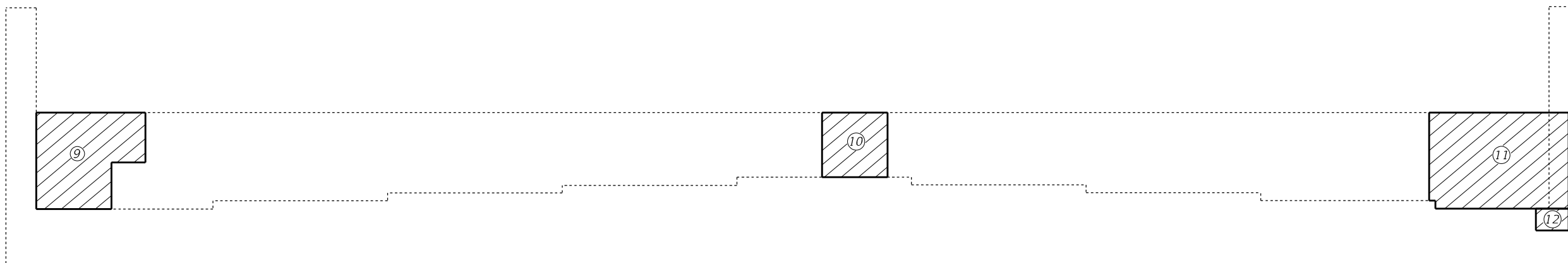
USER NAME = jessica.hille	DESIGNED - T. Walk	REVISED -
	DRAWN - T. Walk	REVISED -
PLOT SCALE = 100,0000' / in.	CHECKED - D. Macklin	REVISED -
PLOT DATE = 8/30/2023	DATE - August 2022	REVISED -

STATE OF ILLINOIS
DEPARTMENT OF TRANSPORTATION

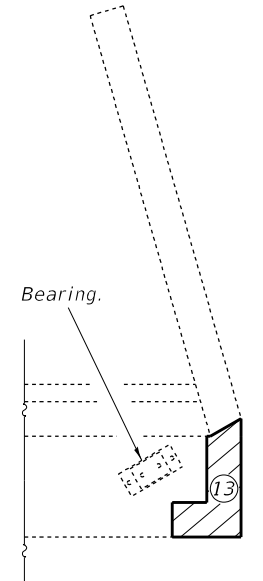
STRUCTURAL REPAIR OF CONCRETE WEST ABUTMENT
S.N. 026-0071

SCALE: 100,0000' / in SHEET 11 OF 13 SHEETS STA. TO STA.

F.A.J. RTE.	SECTION	COUNTY	TOTAL SHEETS	SHEET NO.
57	D7 BRIDGE REPAIRS 2024-5	FAYETTE	26	20
			CONTRACT NO. 74B31	
			ILLINOIS FED. AID PROJECT	



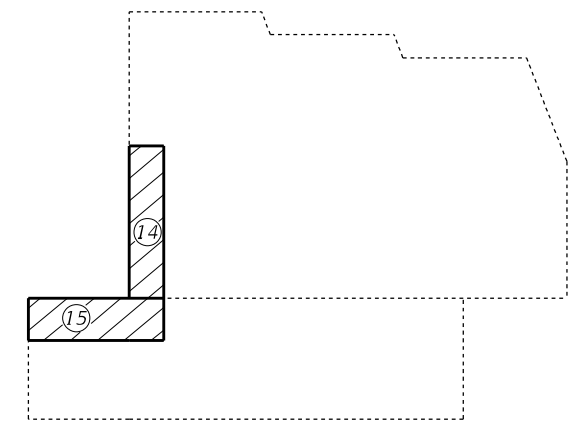
EAST ABUTMENT
Looking West



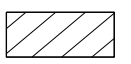
Abut. Cap

STRUCTURAL REPAIR OF CONCRETE

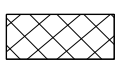
Patch No.	Depth ≤ 5"	Depth > 5"
	SqFt	SqFt
9	19.0	
10	10.5	
11	27.0	
12	2.0	
13	4.0	
14	4.5	
15	4.0	
Total	71.0	0.0



SOUTHEAST WINGWALL



Structural Repair of Concrete (Depth ≤ 5")



Structural Repair of Concrete (Depth > 5")

Notes

Quantities and locations are approximated. Actual quantities and locations to be determined in the field by the Engineer.

This work is intended to repair only areas of severe deterioration. Some minor deteriorated areas may be left unrepaired.

Do not disturb Bearings.

MODEL: Default
 FILE: \\na16c-pw\uldest-pw-bead\paw.com\PIV\DOT\Documents\DOT Office\Dir\dr. 7\Project\74B31\CADD\DATA\CAD\Sheet\12\12-14-23\bridge_repair

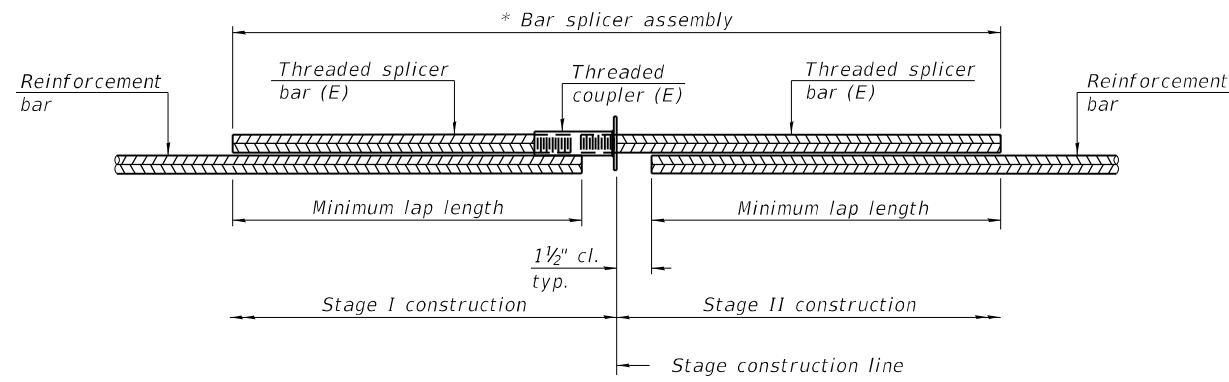
USER NAME = jessica.hille	DESIGNED - T. Walk	REVISED -
	DRAWN - T. Walk	REVISED -
PLOT SCALE = 100,0000' / in.	CHECKED - D. Macklin	REVISED -
PLOT DATE = 8/30/2023	DATE - August 2022	REVISED -

STATE OF ILLINOIS
DEPARTMENT OF TRANSPORTATION

STRUCTURAL REPAIR OF CONCRETE EAST ABUTMENT
S.N. 026-0071

SCALE: 100,0000' / in SHEET 12 OF 13 SHEETS STA. TO STA.

F.A.J. RTE.	SECTION	COUNTY	TOTAL SHEETS	SHEET NO.
57	D7 BRIDGE REPAIRS 2024-5	FAYETTE	26	21
			CONTRACT NO. 74B31	
			ILLINOIS FED. AID PROJECT	

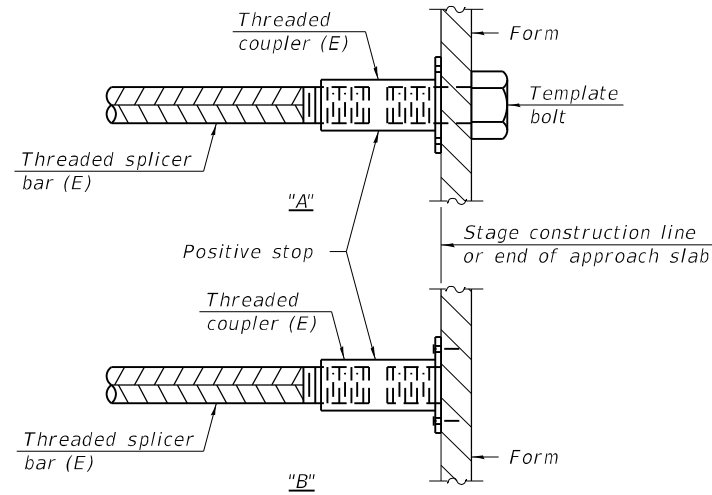


STANDARD BAR SPLICER ASSEMBLY PLAN
 (All components shall be provided from one supplier)

Threaded splicer bar length = min. lap length + 1 1/2" + thread length

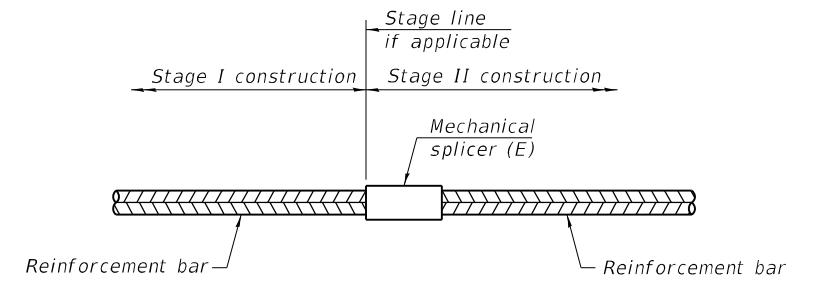
* Epoxy not required on Bar Splicer Assembly components used in conjunction with black bars.

Location	Bar size	No. assemblies required	Minimum lap length
Deck	#6	8	3'-7"
Deck Median	#5	16	3'-0"
Approach	#6	8	4'-0"
Approach Median	#5	4	3'-4"



INSTALLATION AND SETTING METHODS

"A" : Set bar splicer assembly by means of a template bolt.
 "B" : Set bar splicer assembly by nailing to wood forms or cementing to steel forms.
 (E) : Indicates epoxy coating.



STANDARD MECHANICAL SPLICER

Location	Bar size	No. assemblies required

Notes:
 Splicer bars shall be deformed with threaded ends and have a minimum 60 ksi yield strength.
 All reinforcement shall be lapped and tied to the splicer bars.
 Bar splicer assemblies shall be epoxy coated according to the requirements for reinforcement bars. See Section 508 of the Standard Specifications.
 See approved list of bar splicer assemblies and mechanical splicers for alternatives.

BSD-1

1-1-2020

MODEL: Default
 FILE: \\naafpc-pw-bentley.com\PW\DOT\Documents\DOT Office\Dir\rdt_7\Project\74831\CADD\Drawings\CAD\Sheet\13\13-1-bridge_repair

USER NAME = Default	DESIGNED - T. Walk	REVISED -
	DRAWN - T. Walk	REVISED -
PLOT SCALE = 100,0000' / in.	CHECKED - D. Macklin	REVISED -
PLOT DATE = 10/3/2023	DATE - August 2022	REVISED -

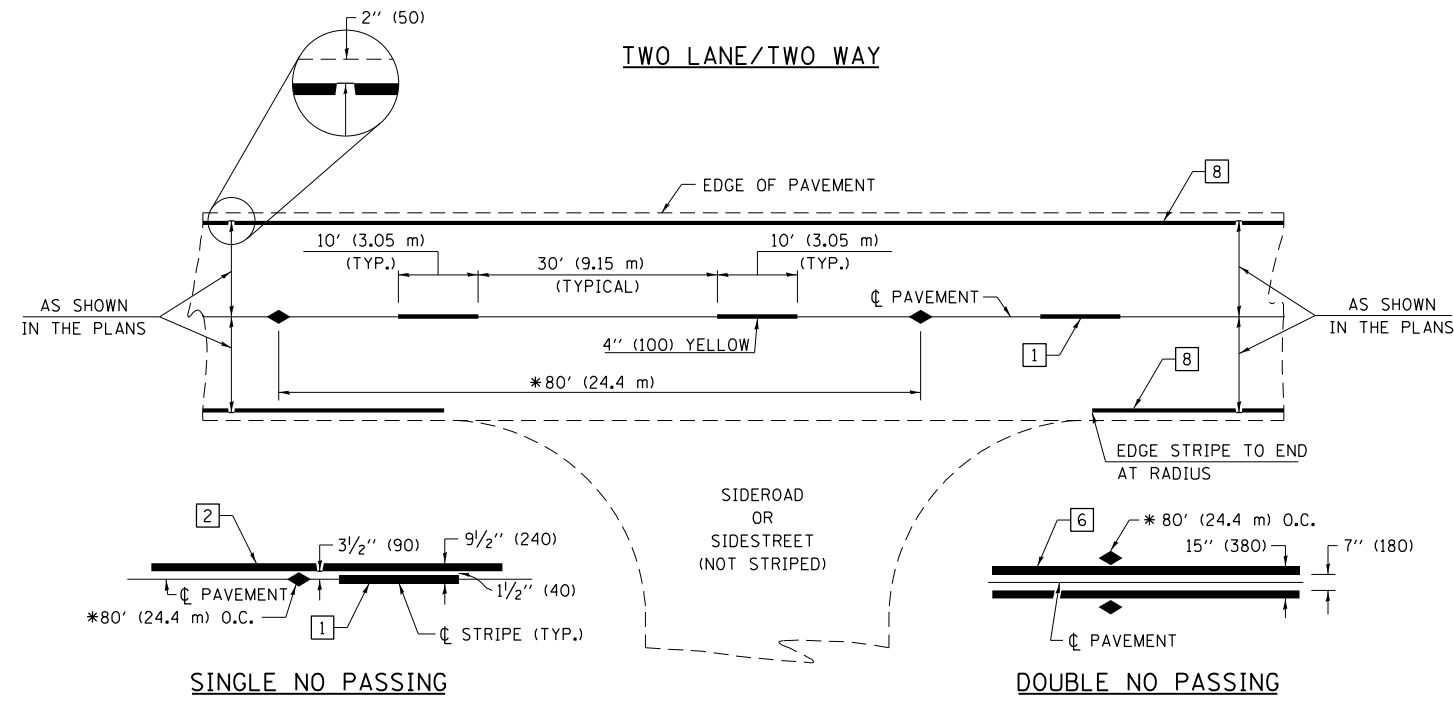
**STATE OF ILLINOIS
 DEPARTMENT OF TRANSPORTATION**

BAR SPLICER ASSEMBLY AND MECHANICAL SPLICER DETAILS
S.N. 026-0071

SCALE: 100,0000' / in SHEET 13 OF 13 SHEETS STA. TO STA.

F.A.J. RTE.	SECTION	COUNTY	TOTAL SHEETS	SHEET NO.
57	D7 BRIDGE REPAIRS 2024-5	FAYETTE	26	22
ILLINOIS			FED. AID PROJECT	

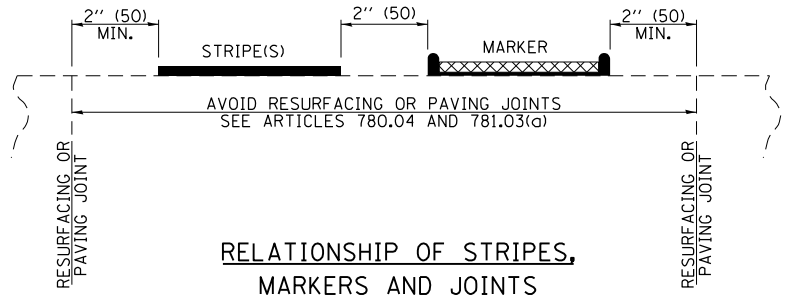
CONTRACT NO. 74831



* REDUCE TO 40' (12.2 m) O.C. ON CURVES WITH POSTED OR ADVISORY SPEEDS OF 45 mph (70 km/h) OR LESS.

PAVEMENT MARKING LEGEND

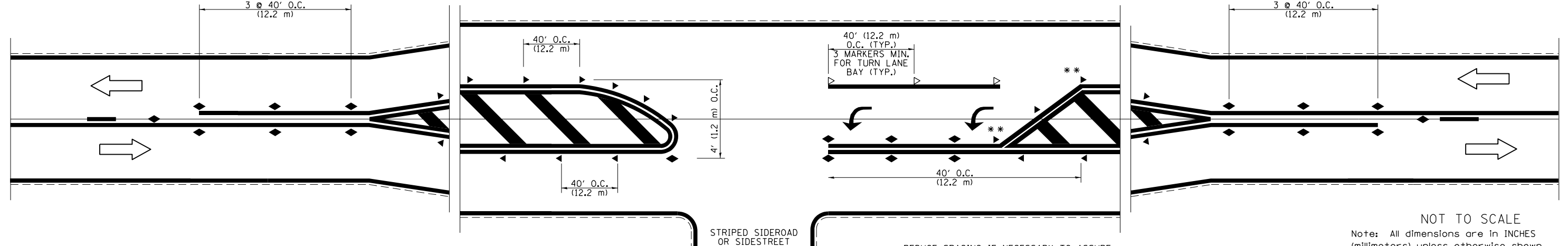
- 1 4" (100) SKIP-DASH (YELLOW)
- 2 4" (100) SOLID (YELLOW)
- 3 12" (300) DIAGONAL (YELLOW)
- 4 4" (100) DOUBLE YELLOW (NARROW)
- 5 12" (300) SOLID WHITE
- 6 4" (100) DOUBLE YELLOW (WIDE)
- 7 6" (150) SKIP-DASH (WHITE)
- 8 4" (100) SOLID (WHITE)
- 9 12" (300) DIAGONAL (WHITE)
- 10 6" (150) SOLID (WHITE)
- 11 24" (600) STOP BAR (WHITE)
- 12 8" (200) SOLID (WHITE)
- 13 4" (100) PARKING WHITE



TYPICAL PAVEMENT MARKERS LEGEND

- ◆ TWO-WAY AMBER MARKER
- ▶ ONE-WAY AMBER MARKER
- ▷ ONE-WAY CRYSTAL MARKER

RAISED REFLECTIVE PAVEMENT MARKERS



NOT TO SCALE
Note: All dimensions are in INCHES (millimeters) unless otherwise shown.

MODEL: Default
FILE: \\naillc:\pub\stdet-cw-benefa\com\PIV\DOT\Documents\DOT Office\Director_7\Project\74831\CADD\Drawings\Sheet\74831-stdet-cw-benefa.dgn

USER NAME = jessica.hille	DESIGNED -	REVISED - NAS 06/22
PLOT SCALE = 100,0000' / in.	DRAWN -	REVISED -
PLOT DATE = 8/30/2023	CHECKED -	REVISED -
	DATE -	REVISED -

STATE OF ILLINOIS
DEPARTMENT OF TRANSPORTATION

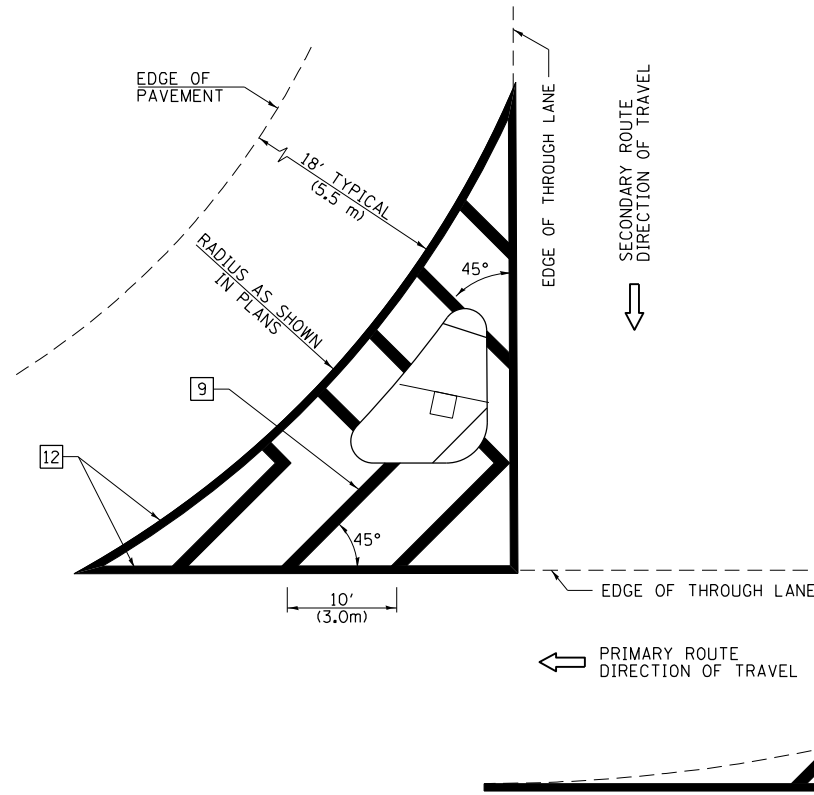
PAVEMENT MARKING AND RAISED REFLECTIVE PAVEMENT MARKERS
(RURAL & URBAN APPLICATIONS)

SCALE: 100,0000' / in SHEET 1 OF 4 SHEETS STA. TO STA.

F.A.I. RTE.	SECTION	COUNTY	TOTAL SHEETS	SHEET NO.
57	*	FAYETTE	26	23
CONTRACT NO. 74831				

ISLANDS

OPTION 1

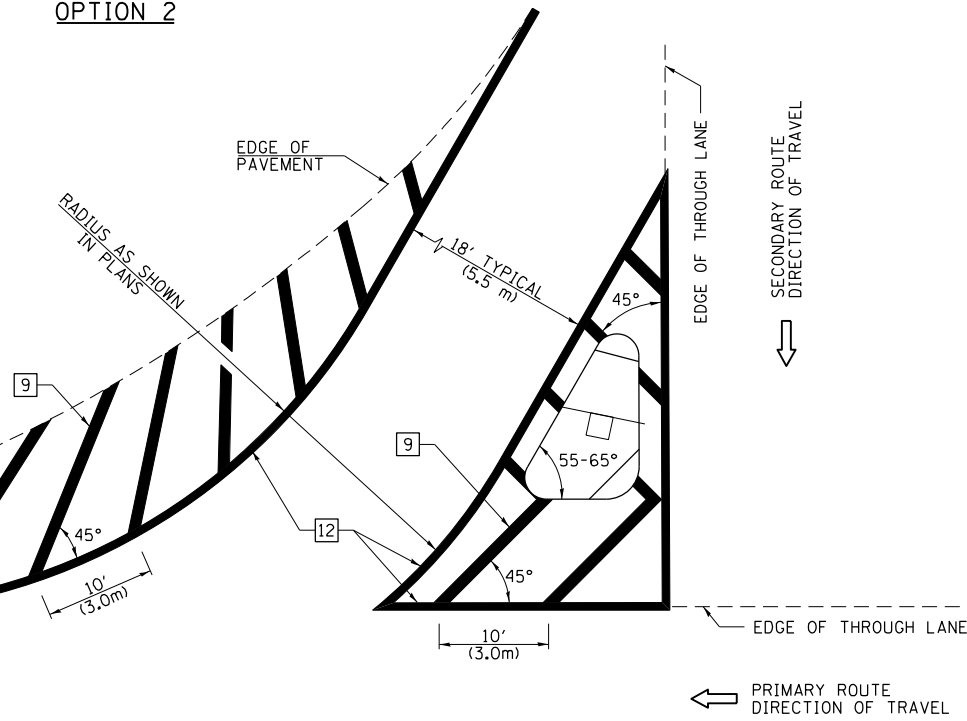


GENERAL NOTES

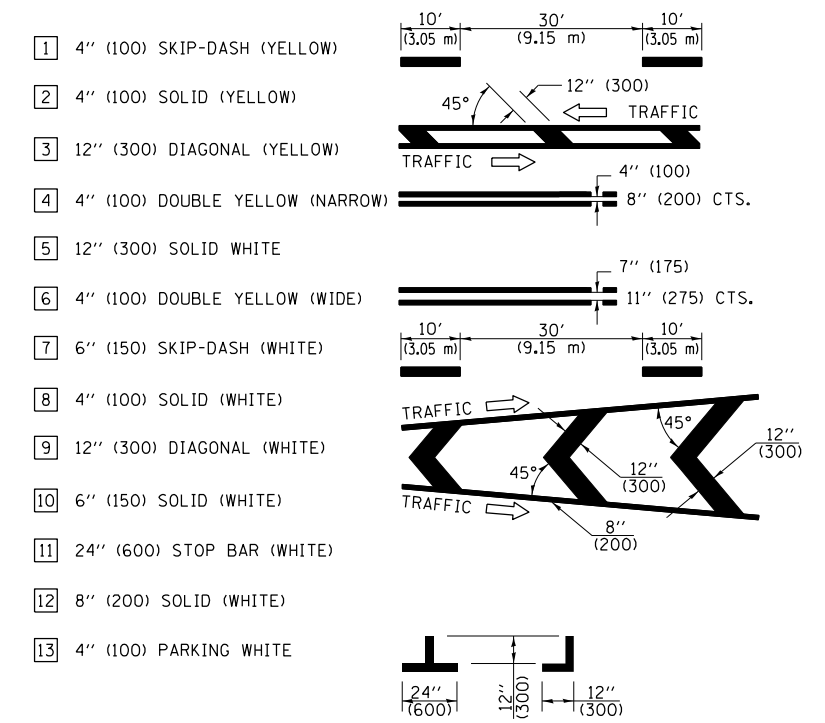
1. RAISED AND CORRUGATED MEDIANS SHALL BE OUTLINED WITH [2].
2. SOME OF THE INFORMATION INCLUDED WITH THIS DETAIL MAY NOT BE APPLICABLE TO THIS IMPROVEMENT.
3. PAVEMENT MARKINGS ARE TO BE EXTENDED THROUGH OMISSIONS WHEN APPLICABLE.
4. FINAL PAVEMENT MARKINGS SHALL BE IN PLACE PRIOR TO PLACING ANY RAISED REFLECTIVE PAVEMENT MARKERS.
5. THE FOLLOWING CRITERIA SHALL BE USED FOR SELECTING THE DIAGONAL PAVEMENT MARKING SPACING:

< 30 MPH (< 50 km/h)	15' (4.5 m)
30-45 MPH (50-75 km/h)	20' (6.0 m)
> 45 MPH (> 75 km/h)	30' (9.0 m)
6. THE USE OF ISLAND STRIPING OPTION 1 OR OPTION 2 SHALL BE AS SHOWN ON THE PLANS.

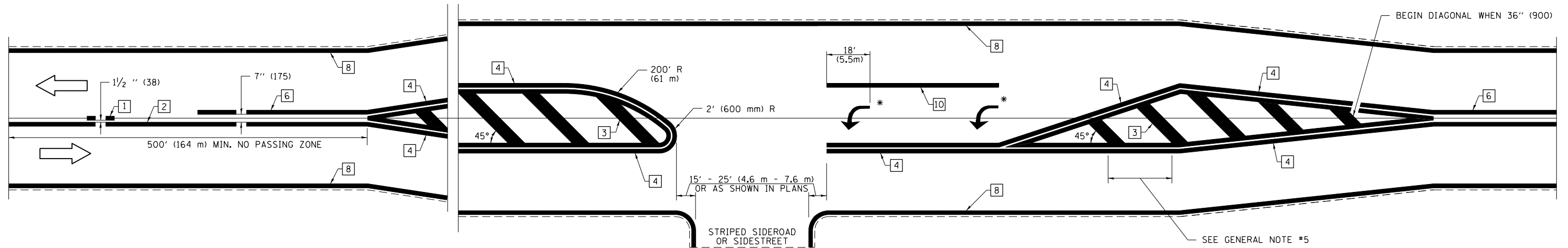
OPTION 2



PAVEMENT MARKING LEGEND



RURAL LEFT TURN STRIPING



* PLACE AN ARROW 18' (5.5 m) BACK FROM END OF THE SOLID WHITE LINE. PLACE ANOTHER ARROW EVEN WITH THE BEGINNING OF THE SOLID WHITE LINE. SPACE ADDITIONAL ARROWS EVENLY UP TO 80' (24.4 m) MAXIMUM SPACING. USE MINIMUM OF 2 ARROWS.

NOT TO SCALE

Note: All dimensions are in INCHES (millimeters) unless otherwise shown.

MODEL: Default
FILE: \\nailes\pub\idest-cw-bead-fwy.com\PIV\DOT\Documents\DOT Office\Director_T\Project\74831\CADD\Drawings\CAD\Sheet\74831-1-1-1-1-1-1.dwg

USER NAME = jessica.ville	DESIGNED -	REVISED - NAS 06/22
PLOT SCALE = 100,0000' / in.	DRAWN -	REVISED -
PLOT DATE = 8/30/2023	CHECKED -	REVISED -
	DATE -	REVISED -

**STATE OF ILLINOIS
DEPARTMENT OF TRANSPORTATION**

**PAVEMENT MARKING AND RAISED REFLECTIVE PAVEMENT MARKERS
(RURAL & URBAN APPLICATIONS)**

SCALE: 100,0000' / in SHEET 1 OF 4 SHEETS STA. TO STA.

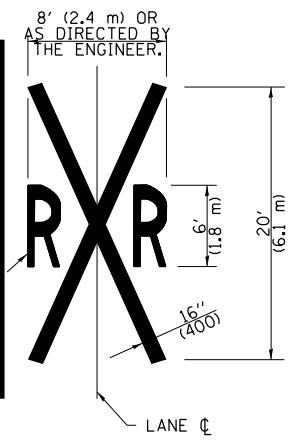
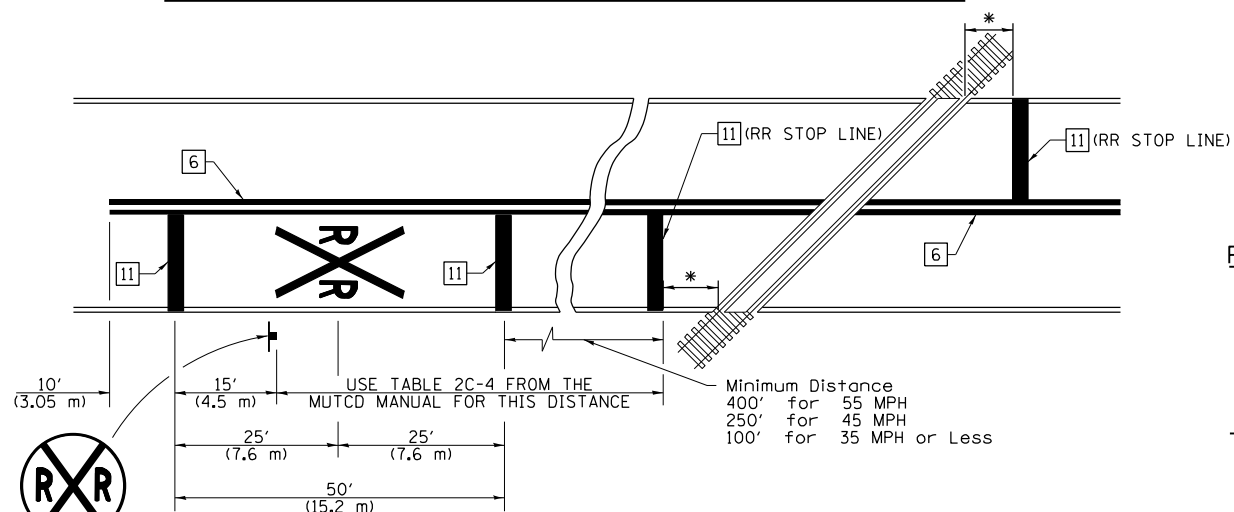
F.A.I. RTE.	SECTION	COUNTY	TOTAL SHEETS	SHEET NO.
57	*	FAYETTE	26	25
CONTRACT NO. 74831				
ILLINOIS FED. AID PROJECT				

SUPPLEMENTAL PAVEMENT MARKING TREATMENT FOR RAILROAD-HIGHWAY GRADE CROSSING

PAVEMENT MARKING LEGEND

- 1 4" (100) SKIP-DASH (YELLOW)
 - 2 4" (100) SOLID (YELLOW)
 - 3 12" (300) DIAGONAL (YELLOW)
 - 4 4" (100) DOUBLE YELLOW (NARROW)
 - 5 12" (300) SOLID WHITE
 - 6 4" (100) DOUBLE YELLOW (WIDE)
 - 7 6" (150) SKIP-DASH (WHITE)
 - 8 4" (100) SOLID (WHITE)
 - 9 12" (300) DIAGONAL (WHITE)
 - 10 6" (150) SOLID (WHITE)
 - 11 24" (600) STOP BAR (WHITE)
 - 12 8" (200) SOLID (WHITE)
 - 13 4" (100) PARKING WHITE
-

PAVEMENT MARKINGS AT RAILROAD-HIGHWAY GRADE CROSSING



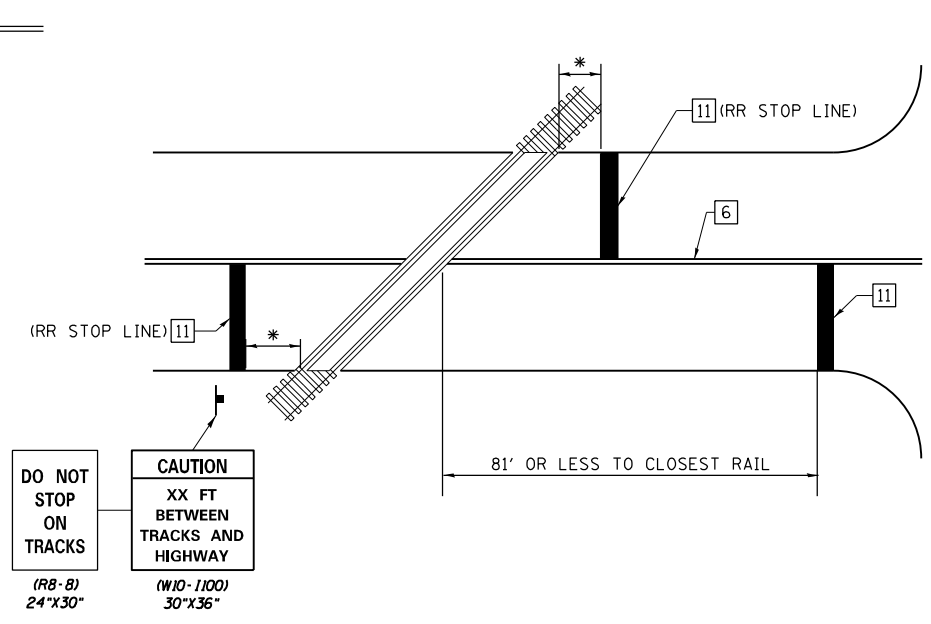
NOTES

THE TRAVERSE SPREAD OF THE "X" MAY VARY ACCORDING TO LANE WIDTH.

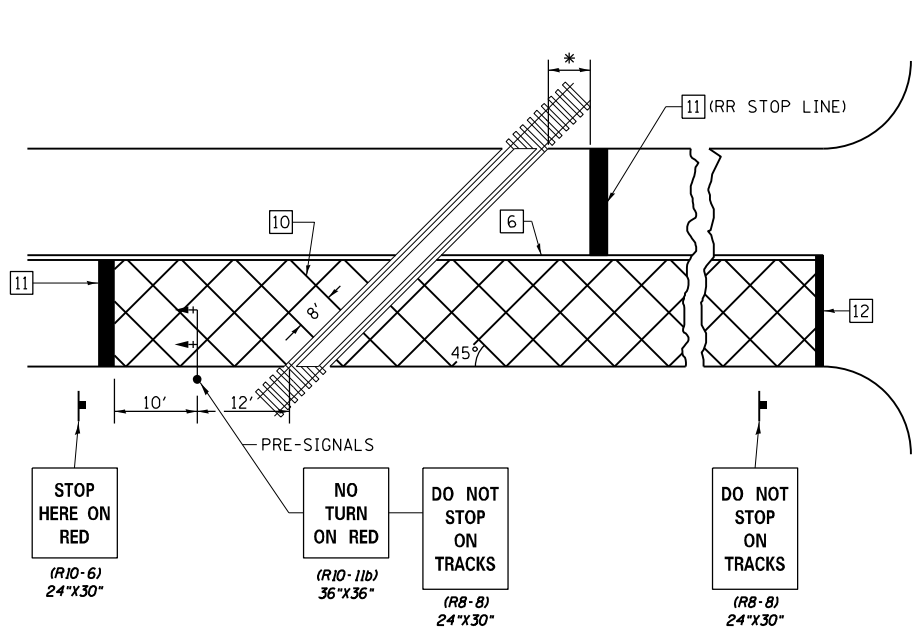
ON MULTI-LANE ROADS, THE STOP LINES SHALL EXTEND ACROSS ALL APPROACH LANES AND SEPARATE RRR SYMBOLS SHALL BE PLACED ADJACENT TO EACH OTHER IN EACH LANE.

WHEN THE PAVEMENT MARKING SYMBOL IS USED, A PORTION OF THE SYMBOL SHOULD BE LOCATED DIRECTLY ADJACENT TO THE ADVANCE WARNING SIGN (W10-1) AS PLACED BY TABLE II-1, CONDITION B OF THE MUTCD.

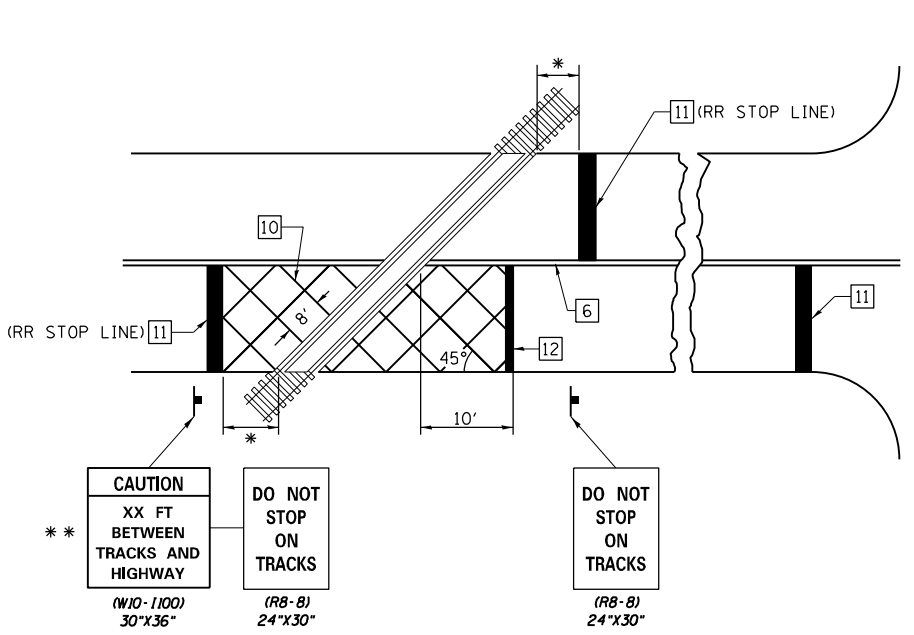
RAILROAD CROSSING WITH NON-SIGNALIZED INTERSECTION



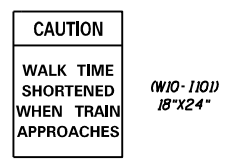
RAILROAD CROSSING WITH INTERCONNECT AND PRE-SIGNALS



RAILROAD CROSSING WITH INTERCONNECT ONLY



- ### GENERAL NOTES
- SUPPLEMENTAL PAVEMENT MARKINGS TO BE INSTALLED ONLY ON APPROACHES TO INTERSECTIONS CONTROLLED BY TRAFFIC SIGNALS WHICH ARE INTERCONNECTED WITH THE RAILROAD WARNING SIGNALS.
 - EXTEND PAVEMENT MARKINGS TO THE INTERSECTION ONLY WHERE PRE-SIGNALS ARE USED.
 - WHEN PEDESTRIAN SIGNALS ARE PRESENT WITH INTERCONNECTED SIGNALS, WARNING SIGN W10-1101 (18"X24") SHALL BE PLACED NEAR EACH PEDESTRIAN SIGNAL HEAD. COUNTDOWN PEDESTRIAN SIGNAL HEADS SHALL NOT BE UTILIZED ALONG WITH INTERCONNECTED SIGNALS.
 - PLEASE REFER TO THE IDOT BUREAU OF OPERATION MEMO OPS T-06 DATED DECEMBER 1, 2020 FOR ADDITIONAL INFORMATION.



- * 15' FROM NEAR RAIL OR 8' FROM AND PARALLEL TO GATE IF PRESENT
- ** WARNING SIGN W10-1100 SHALL BE USED AS AN INTERIM MEASURE AT INTERCONNECTED SIGNAL LOCATIONS WHERE PRE-SIGNALS ARE TO BE INSTALLED IN THE FUTURE. THIS SIGN SHALL BE REMOVED WHEN THE PRE-SIGNALS ARE INSTALLED AND THE PAVEMENT MARKINGS ARE EXTENDED TO THE INTERSECTION.

NOT TO SCALE
Note: All dimensions are in INCHES (millimeters) unless otherwise shown.

MODEL: Default
FILE: Mainfile.pia
PROJECT: 748311_CADDData\CADD\Sheet\748311-RR-PAV-01.dwg
PROJECT: 748311_CADDData\CADD\Sheet\748311-RR-PAV-01.dwg

USER NAME = jessica.hille	DESIGNED -	REVISED - NAS 06/22
PLOT SCALE = 100,0000' / in.	DRAWN -	REVISED -
PLOT DATE = 8/30/2023	CHECKED -	REVISED -
	DATE -	REVISED -

STATE OF ILLINOIS
DEPARTMENT OF TRANSPORTATION

PAVEMENT MARKING AND RAISED REFLECTIVE PAVEMENT MARKERS
(RURAL & URBAN APPLICATIONS)

SCALE: 100,0000' / in SHEET 1 OF 4 SHEETS STA. TO STA.

F.A.I. RTE.	SECTION	COUNTY	TOTAL SHEETS	SHEET NO.
57	*	FAYETTE	26	26
CONTRACT NO. 74831				
ILLINOIS FED. AID PROJECT				