

FA RITE	SECTION	COUNTY	TOTAL SHEETS	SHEET NO.
VAR.	2023 VAR LANDSCAPE	VARIOUS	27	1
ILLINOIS			CONTRACT NO. 62V15	

\* 27 + 2 = 29 TOTAL SHEETS

D-91-153-23

11-17-2023 LETTING ITEM 122

STATE OF ILLINOIS  
DEPARTMENT OF TRANSPORTATION

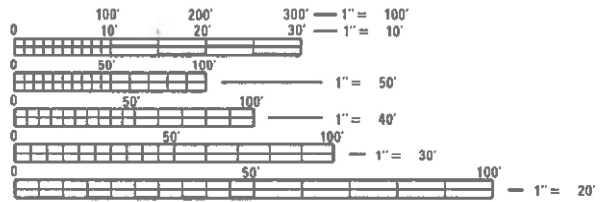
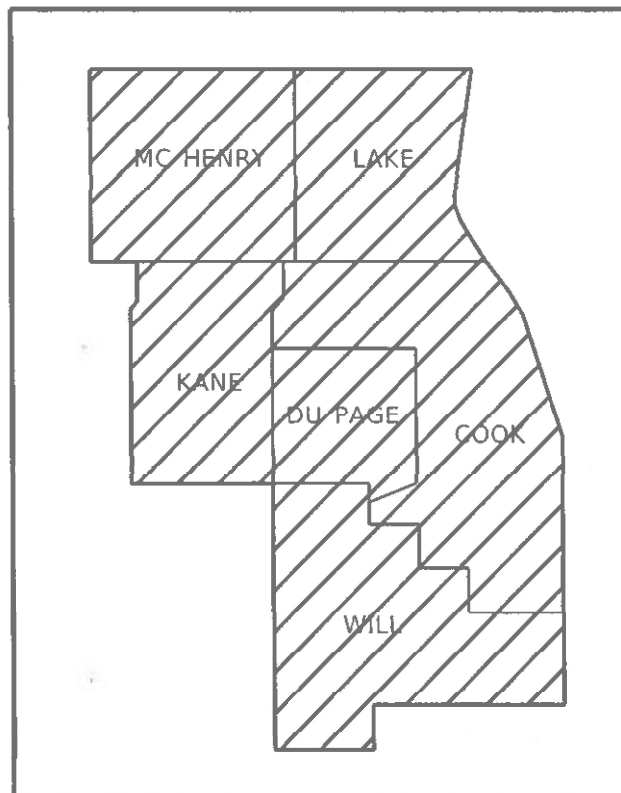
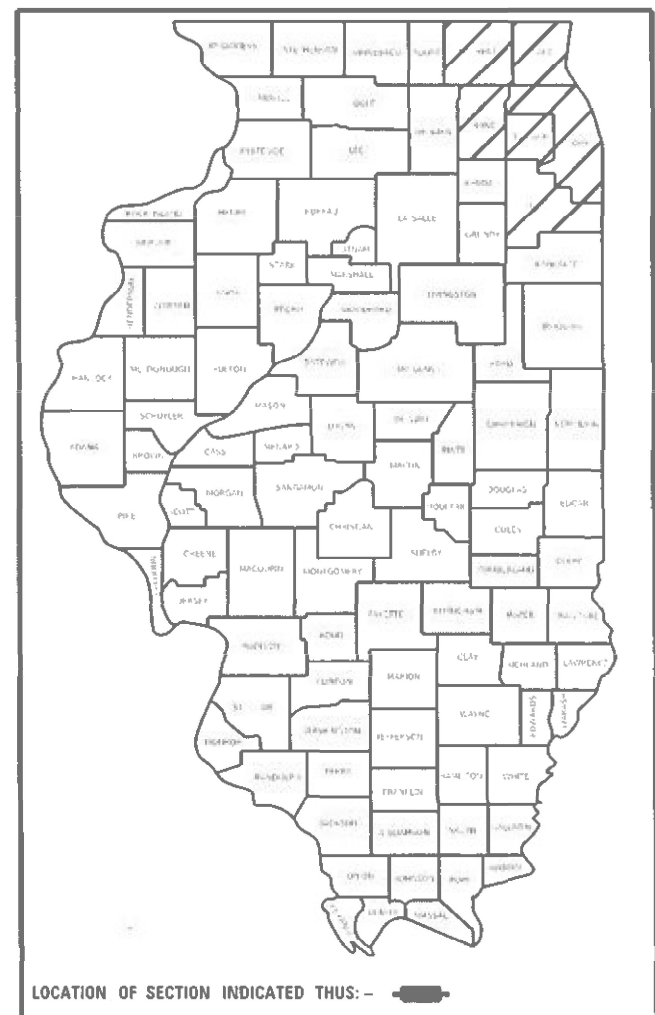
**PROPOSED  
HIGHWAY PLANS**

ROUTE VARIOUS  
SECTION 2023 VAR LANDSCAPE  
PROJECT N/A  
LANDSCAPE REPAIR & RESTORATION  
VARIOUS COUNTY

C-91-220-23

FOR INDEX OF SHEETS, SEE SHEET NO. 2

IMPROVEMENTS ARE AT VARIOUS  
LOCATIONS WITHIN DISTRICT ONE



FULL SIZE PLANS HAVE BEEN PREPARED USING STANDARD ENGINEERING SCALES. REDUCED SIZED PLANS WILL NOT CONFORM TO STANDARD SCALES. IN MAKING MEASUREMENTS ON REDUCED PLANS, THE ABOVE SCALES MAY BE USED.

J.U.L.I.E.  
JOINT UTILITY LOCATION INFORMATION FOR EXCAVATORS  
1-800-892-0123  
OR 811

PROJECT ENGINEER JAMES STUMPNER  
PROJECT MANAGER GIOVANNA ZAFFINA (847) 705-4171

CONTRACT NO. 62V15

GROSS LENGTH = x.xx FT. = x.xxx MILE  
NET LENGTH = x.xx FT. = x.xxx MILE

STATE OF ILLINOIS  
DEPARTMENT OF TRANSPORTATION

SUBMITTED July 7, 2023  
Jose Pineda REGIONAL ENGINEER

August 18, 2023 J. A. Etk  
ENGINEER OF DESIGN AND ENVIRONMENT

August 18, 2023 Steph McSwain  
DIRECTOR OF HIGHWAYS PROJECT IMPLEMENTATION

PRINTED BY THE AUTHORITY  
OF THE STATE OF ILLINOIS

# INDEX OF SHEETS

SHEET NO.	DESCRIPTION
1	COVER SHEET
2	INDEX OF SHEETS, HIGHWAY STANDARDS, GENERAL NOTES
3-5	SUMMARY OF QUANTITIES
6	CALENDAR OF CONSTRUCTION & ESTABLISHMENT WORK
7	WORK ORDER
8-25	LOCATION AND WORK SCHEDULE, SPECIFIC LOCATIONS AND WORK SUMMARIES
26	TRAFFIC CONTROL AND PROTECTION SIDE ROADS, INTERSECTIONS, AND DRIVEWAYS (TC-10)
27	TRAFFIC CONTROL DETAIL FOR FREEWAY SHOULDER CLOSURES AND PARTIAL RAMP CLOSURE (TC-17)

# HIGHWAY STANDARDS

STANDARD NO.	DESCRIPTION
701001-02	OFF-ROAD OPERATIONS, 2L, 2W, MORE THAN 15' AWAY
701006-05	OFF-ROAD OPERATIONS, 2L, 2W, 15' TO 24" FROM PAVEMENT
701101-05	OFF-ROAD OPERATIONS, MULTILANE, 15' TO 24" FROM PAVEMENT EDGE
701106-02	OFF-ROAD OPERATIONS, MULTILANE, MORE THAN 15' AWAY
701201-05	LANE CLOSURE, 2L, 2W, DAY ONLY, FOR SPEEDS ≥ 45 MPH
701311-03	LANE CLOSURE, 2L, 2W, MOVING OPERATIONS - DAY ONLY
701426-09	LANE CLOSURE, MULTILANE, DAY OPERATION ONLY, FOR SPEEDS ≥ 45 MPH
701427-05	LANE CLOSURE, MULTILANE, INTERMITTENT OR MOVING OPERATIONS, FOR SPEEDS ≤ 40 MPH
701602-10	URBAN LANE CLOSURE, MULTILANE, 2W WITH BI-DIRECTIONAL LEFT TURN LANE
701606-10	URBAN SINGLE LANE CLOSURE, MULTILANE, 2W WITH MOUNTABLE MEDIAN
701611-01	URBAN HALF CLOSURE, MULTILANE, 2W WITH MOUNTABLE MEDIAN
701701-10	URBAN LANE CLOSURE, MULTILANE INTERSECTION
701801-06	SIDEWALK, CORNER OR CROSSWALK CLOSURE
701901-08	TRAFFIC CONTROL DEVICES

# GENERAL NOTES

- BEFORE STARTING ANY EXCAVATION, THE CONTRACTOR SHALL CALL "J.U.L.I.E" AT (800) 892-0123 OR 811 FOR FIELD LOCATIONS OF BURIED ELECTRIC, TELEPHONE AND GAS UTILITIES. (48 HOUR NOTIFICATION IS REQUIRED).
- THE CONTRACTOR WILL NOT BE ALLOWED TO SET UP A YARD OR FIELD OFFICE ON STATE PROPERTY WITHOUT WRITTEN PERMISSION FROM THE DEPARTMENT.
- IT SHALL BE THE CONTRACTOR'S RESPONSIBILITY TO VERIFY ALL CONDITIONS EXISTING IN THE FIELD PRIOR TO STARTING WORK ORDERS.
- THE CONTRACTOR SHALL CONTACT DISTRICT ONE TRAFFIC CONTROL SUPERVISOR AT (847) 705-4470 A MINIMUM OF 72 HOURS IN ADVANCE OF BEGINNING WORK.
- THE CONTRACTOR SHALL REQUEST AND GAIN APPROVAL FROM THE ILLINOIS DEPARTMENT OF TRANSPORTATION'S EXPRESSWAY TRAFFIC OPERATIONS ENGINEER AT WWW.IDOTLCS.COM TWENTY-FOUR (24) HOURS IN ADVANCE OF DAILY LANE, RAMP AND SHOULDER CLOSURES AND 7 DAYS IN ADVANCE OF ALL PERMANENT AND WEEKEND CLOSURES ON ALL FREEWAYS AND/OR EXPRESSWAYS IN DISTRICT ONE. THIS ADVANCE NOTIFICATION IS CALCULATED BASED ON WORKWEEK OF MONDAY THROUGH FRIDAY AND SHALL NOT INCLUDE WEEKENDS OR HOLIDAYS.
- THE CONTRACTOR SHALL BE REQUIRED TO PROVIDE ACCESS TO ABUTTING PROPERTY AT ALL TIMES DURING THE CONSTRUCTION OF THIS PROJECT.
- THE CONTRACTOR SHALL USE CARE IN CONSTRUCTION OPERATIONS NEAR ANY AND ALL EXISTING ITEMS THAT WILL NOT BE REMOVED. ANY DAMAGE DONE TO EXISTING ITEMS BY THE CONTRACTOR SHALL BE REPAIRED AT THE CONTRACTOR'S OWN EXPENSE TO THE SATISFACTION OF THE ENGINEER.
- THE CONTRACTOR SHALL MAINTAIN PEDESTRIAN ACCESS AT ALL TIMES DURING CONSTRUCTION.
- DURING CONSTRUCTION OPERATIONS, WHEN ANY LOOSE MATERIAL IS DEPOSITED IN THE FLOW LINE OF DITCHES, GUTTERS, OR DRAINAGE STRUCTURES SO THAT THE NATURAL FLOW OF WATER IS OBSTRUCTED, THE MATERIAL SHALL BE REMOVED AT THE CLOSE OF EACH WORKING DAY. THIS WORK IS CONSIDERED AS PART OF CLEAN-UP.
- THE CONTRACTOR SHALL ADHERE TO ARTICLE 107.23 OF THE CURRENT IDOT STANDARD SPECIFICATIONS BOOK.
- WHEN HERBICIDE WORK IS SPECIFIED AND AUTHORIZED, THE CONTRACTOR SHALL HAVE A LICENSED APPLICATOR ON THE WORK SITE TO PERFORM SAID WORK UNDER THE DIRECT SUPERVISION OF THE RESIDENT ENGINEER.

# COMMITMENTS

- ALL INSTALLATION WORK ON I-290 EISENHOWER EXPRESSWAY SHALL BE COMPLETED BY SUNDAY, JUNE 30, 2024. SHRUBS AND PERENNIALS SHALL BE INSTALLED BY THE COMPLETION DATES OF JUNE 1 AND JUNE 15 (SECTIONS 253 AND 254).

MODEL: Default  
 FILE: Model.ctb  
 USER: melissa.delrosario  
 PROJECT: 2023 VAR LANDSCAPE  
 PLOT DATE: 10/5/2023

USER NAME = melissa.delrosario	DESIGNED -	REVISED -	<b>STATE OF ILLINOIS DEPARTMENT OF TRANSPORTATION</b>	<b>LANDSCAPE REPAIR AND RESTORATION INDEX OF SHEETS, HIGHWAY STANDARDS, &amp; GENERAL NOTES</b>	F.A. #	SECTION	COUNTY	TOTAL SHEETS	SHEET NO.		
PLOT SCALE = 100.0395' / in.	DRAWN -	REVISED -			VAR	2023 VAR LANDSCAPE	VARIOUS	27	2		
PLOT DATE = 10/5/2023	CHECKED -	REVISED -			CONTRACT NO. 62V15						
	DATE -	REVISED -			ILLINOIS FED. AID PROJECT						
					SCALE:	SHEET	OF	SHEETS	STA.	TO	STA.



SUMMARY OF QUANTITIES			TOTAL QUANTITIES URBAN	CONSTRUCTION TYPE CODE				
CODE NO	ITEM	UNIT		100% STATE 0031				
A2007616	TREE, TAXODIUM DISTICHUM (COMMON BALD CYPRESS), 2" CALIPER, BALLED AND BURLAPPED	EACH	10	10				
A2007916	TREE, TILIA AMERICANA REDMOND (REDMOND AMERICAN LINDEN), 2" CALIPER, BALLED AND BURLAPPED	EACH	7	7				
A2008468	TREE, ULMUS AMERICANA PRINCETON (PRINCETON AMERICAN ELM), 2" CALIPER, BALLED AND BURLAPPED	EACH	14	14				
B2000132	TREE, ACER FREEMANII BAILSTON (MATADOR MAPLE), 2-1/2" CALIPER, BALLED AND BURLAPPED	EACH	8	8				
B2001164	TREE, CERCIS CANADENSIS (EASTERN REDBUD), 5' HEIGHT, CLUMP FORM, BALLED AND BURLAPPED	EACH	10	10				
B2002664	TREE, MALUS ADAMS (ADAMS CRABAPPLE), 5' HEIGHT, CLUMP FORM, BALLED AND BURLAPPED	EACH	3	3				
B2003274	TREE, MALUS DOLGO (DOLGO CRABAPPLE), 2" CALIPER, LOW-BRANCHED, BALLED AND BURLAPPED	EACH	10	10				
B2004216	TREE, MALUS PROFUSION (PROFUSION CRAB APPLE), 2" CALIPER, TREE FORM, BALLED AND BURLAPPED	EACH	8	8				

SUMMARY OF QUANTITIES			TOTAL QUANTITIES URBAN	CONSTRUCTION TYPE CODE				
CODE NO	ITEM	UNIT		100% STATE 0031				
B2010070	TREE, CLADRASTIS KENTUCKEA (AMERICAN YELLOWWOOD), 2" CALIPER, BALLED AND BURLAPPED	EACH	7	7				
B2013468	TREE, MALUS GOLDEN RAINDROPS (GOLDEN RAINDROPS CRABAPPLE), 2" CALIPER, TREE FORM, BALLED AND BURLAPPED	EACH	5	5				
C20058G5	SHRUB, RHUS AROMATICA GRO-LOW (GRO-LOW FRAGRANT SUMAC), 5-GALLON	EACH	10	10				
C2C077G5	SHRUB, ROSA RUGOSA FRAU DAGMAR HARTOPP (FRAU DAGMAR HASTRUP RUGOSA ROSE), CONTAINER GROWN, 5-GALLON	EACH	8	8				
D2001760	EVERGREEN, PICEA ABIES (NORWAY SPRUCE), 5' HEIGHT, BALLED AND BURLAPPED	EACH	15	15				
D2001960	EVERGREEN, PICEA GLAUCA DENSATA (BLACK HILLS SPRUCE), 5' HEIGHT, BALLED AND BURLAPPED	EACH	13	13				
D2002460	EVERGREEN, PINUS FLEXILIS VANDERWOLF'S PYRAMID (VANDERWOLF'S PYRAMID LIMBER PINE), 5' HEIGHT, BALLED AND BURLAPPED	EACH	15	15				
K0012990	PERENNIAL PLANTS, ORNAMENTAL TYPE, GALLON POT	UNIT	13	13				

FILE NAME =	USER NAME = meilssadeirosa10	DESIGNED -	REVISED -	<b>STATE OF ILLINOIS DEPARTMENT OF TRANSPORTATION</b>	<b>LANDSCAPE REPAIR AND RESTORATION SUMMARY OF QUANTITIES</b>	F.A. -	SECTION	COUNTY	TOTAL SHEETS	SHEET NO.	
dw:\1\dd-pw-bentley.com\FWIDOT\Documents\VDOT	Projects\DI5323\CADD\Structures\DI5323-8	DRWING -	REVISED -			VAR	2023 VAR LANDSCAPE	VARIOUS	27	3	
	PLOT SCALE = 1/8" = 1' / 1/8"	CHECKED -	REVISED -			<b>CONTRACT NO. 62V15</b>					
	PLOT DATE = 7/12/2023	DATE -	REVISED -			SCALE: SHEET NO. OF SHEETS STA. TO STA. FED. ROAD DIST. NO. 1 ILLINOIS FED. AID PROJECT					

SUMMARY OF QUANTITIES				CONSTRUCTION TYPE CODE				SUMMARY OF QUANTITIES				CONSTRUCTION TYPE CODE			
CODE NO	ITEM	UNIT	TOTAL QUANTITIES URBAN	100% STATE 0031				CODE NO	ITEM	UNIT	TOTAL QUANTITIES URBAN	100% STATE 0031			
K0026610	TRANSPLANTED SALVAGED TREES	EACH	13	13				25200110	SODDING, SALT TOLERANT	SO YD	2,786	2,786			
K0026850	PERENNIAL PLANT CARE	SQ YD	850	850				25200200	SUPPLEMENTAL WATERING	UNIT	145	145			
K0029632	WEED CONTROL, NON-SELECTIVE AND NON-RESIDUAL	GALLON	25	25				67100100	MOBILIZATION	L SUM	1	1			
X2511630	EROSION CONTROL BLANKET (SPECIAL)	SO YD	2450	2450				A2000216	TREE, ACER X FREEMANII MARMO (MARMO FREEMAN MAPLE), 2" CALIPER, BALLED AND BURLAPPED	EACH	7	7			
21101605	TOPSOIL FURNISH AND PLACE, 2"	SO YD	5154	5154				A2002008	TREE, AESCULUS FLAVEA (YELLOW SWEET BUCKEYE), 2" CALIPER, BALLED AND BURLAPPED	EACH	9	9			
21101615	TOPSOIL FURNISH AND PLACE, 4"	SO YD	3750	3750				A2002714	TREE, CARYA OVATA (SHAGBARK HICKORY), 1-3/4" CALIPER, BALLED AND BURLAPPED	EACH	7	7			
25000115	SEEDING, CLASS 1B	ACRE	0.5	0.5				A2002816	TREE, CATALPA SPECIOSA (NORTHERN CATALPA), 2" CALIPER, BALLED AND BURLAPPED	EACH	19	19			
25000210	SEEDING, CLASS 2A	ACRE	7	7				A2002916	TREE, CELTIS OCCIDENTALIS (COMMON HACKBERRY), 2" CALIPER, BALLED AND BURLAPPED	EACH	22	22			
25000400	NITROGEN FERTILIZER NUTRIENT	POUND	680	680				A2004702	TREE, GLEDITSIA TRIACANTHOS INERMIS IMPERIAL (IMPERIAL HONEYLOCUST), 2" CALIPER, BALLED AND BURLAPPED	EACH	12	12			
25000500	PHOSPHORUS FERTILIZER NUTRIENT	POUND	680	680				A2004816	TREE, GLEDITSIA TRIACANTHOS INERMIS SKYLINE (SKYLINE THORNLESS COMMON	EACH	17	17			
25000600	POTASSIUM FERTILIZER NUTRIENT	POUND	680	680											
25000750	MOWING	ACRE	12	12											
25100630	EROSION CONTROL BLANKET	SO YD	29,275	29,275											

SUMMARY OF QUANTITIES			TOTAL QUANTITIES URBAN	CONSTRUCTION TYPE CODE					
CODE NO	ITEM	UNIT		100% STATE 0031					
A2005020	TREE, GYMNOCLADUS DIOICUS (KENTUCKY COFFEETREE), 2-1/2" CALIPER, BALLED AND BURLAPPED	EACH	19	19					
A2005416	TREE, LIRIODENDRON TULIIFERA (TULIP TREE), 2" CALIPER, BALLED AND BURLAPPED	EACH	7	7					
A2005468	TREE, MALUS JFS KW139MX, (RUBY DAZE CRABAPPLE), 2" CALIPER, TREE FORM, BALLED AND BURLAPPED	EACH	6	6					
A2005616	TREE, OSTRYA VIRGINIANA (AMERICAN HOPHORNBEAM), 2" CALIPER, BALLED AND BURLAPPED	EACH	3	3					
A2006516	TREE, QUERCUS BICOLOR (SWAMP WHITE OAK), 2" CALIPER, BALLED AND BURLAPPED	EACH	22	22					
A2006716	TREE, QUERCUS MACROCARPA (BUR OAK), 2" CALIPER, BALLED AND BURLAPPED	EACH	10	10					
A2006816	TREE, QUERCUS MUEHLENBERGII (CHINKAPIN OAK), 2" CALIPER, BALLED AND BURLAPPED	EACH	10	10					
A2007018	TREE, QUERCUS ROBUR X BICOLOR NADLER (KINDRED SPIRIT HYBRID OAK), 2" CALIPER, BALLED AND BURLAPPED	EACH	3	3					

SUMMARY OF QUANTITIES			TOTAL QUANTITIES URBAN	CONSTRUCTION TYPE CODE					
CODE NO	ITEM	UNIT		100% STATE 0031					
A2007150	TREE, QUERCUS VELUTINA (BLACK OAK), 2" CALIPER, BALLED AND BURLAPPED	EACH	18	18					
Ø 20076604	TRAINEES - TRAINING PROGRAM GRADUATE	HOURS	2500	2500					
C2003600	SHRUB, HYDRANGEA PANICULATA LITTLE QUICK FIRE (LITTLE QUICK FIRE HYDRANGEA), CONTAINER GROWN, 5 GALLON	EACH	25	25					
C2C010G5	SHRUB, BUDDLEJA 'BLUE CHIP' LO & BEHOLD (BLUE CHIP DWARF BUTTERFLY BUSH), CONTAINER GROWN 5-GALLON	EACH	12	12					
C2C03424	SHRUB, HYDRANGEA ARBORESCENS ANNABELLE (ANNABELLE SMOOTH HYDRANGEA), 2' HEGHT CONTAINER	EACH	25	25					
K0029629	WEED CONTROL, BROADLEAF IN TURF	POUND	5	5					
K0036120	MULCH PLACEMENT 4"	SQ YD	550	550					
X2503110	MOWING (SPECIAL)	ACRE	5	5					

FILE NAME =	USER NAME = mellissadeltrasario	DESIGNED -	REVISED -	<b>STATE OF ILLINOIS DEPARTMENT OF TRANSPORTATION</b>	<b>LANDSCAPE REPAIR AND RESTORATION SUMMARY OF QUANTITIES</b>	F.A. RTE.	SECTION	COUNTY	TOTAL SHEETS	SHEET NO.	
pwn\ltdot-pw.bentley.com\PI\DOT\Documents\DOT Off\ltdot-pw\Projects\015323\CADDData\Structures\015323-01.dwg	PROJECT = 2023 VAR LANDSCAPE	CHECKED -	REVISED -			VAR	2023 VAR LANDSCAPE	VARIOUS	27	5	
PLOT SCALE = 1/8" = 1' / In.	DATE = 7/12/2023	DATE -	REVISED -			CONTRACT NO. 62V15					
						SCALE:		SHEET NO. OF SHEETS		STA. TO STA.	

Ø 0042

## 62V15 - SCHEDULE OF LANDSCAPE CONSTRUCTION AND ESTABLISHMENT WORK

ITEM		2024												2025												
		JANUARY	FEBRUARY	MARCH	APRIL	MAY	JUNE	JULY	AUGUST	SEPTEMBER	OCTOBER	NOVEMBER	DECEMBER	JANUARY	FEBRUARY	MARCH	APRIL	MAY	JUNE	JULY	AUGUST	SEPTEMBER	OCTOBER	NOVEMBER		
		PHASE I					PHASE II							PHASE III				PHASE IV								
Plant Material Inspections	Submit completed plant inspection forms to IDOT by December 15 for spring planting season	Submit completed plant inspection sheets to IDOT for SPRING 2024 plantings (Initial Installations)		IDOT inspects SPRING 2024 plant material at various nurseries												IDOT inspects SPRING 2025 plant material at various nurseries (IF NECESSARY)										
	SPRING plantings of balled and burlapped: EVERGREENS: March 15 to April 30 DECIDUOUS: March 15 - May 30			SPRING PLANTINGS (INITIAL INSTALLATION)									PERIOD OF ESTABLISHMENT INSPECTION BY IDOT													
	Period of Establishment Plant Care: Weed & Water (Included in cost of tree, shrub, & vine installation)				2	2		2	2	2		2		2			2	2	2	2	2	2	2			
	REPLACEMENT PLANTINGS FALL: October 15 to November 30 SPRING: March 15 to May 15												FALL REPLACEMENT PLANTINGS (IF REQUIRED)				SPRING REPLACEMENT PLANTINGS (IF REQUIRED)									
Supplemental Watering (WOODY PLANTS)	SUPPLEMENTAL WATERING (IF NECESSARY, AS DIRECTED BY ENGINEER)												SUPPLEMENTAL WATERING (AS DIRECTED BY THE ENGINEER)													
Tree, Shrub, & Vine Plantings	Ornamental Perennial Plants INSTALLATION SPRING: May 1 to June 15 LATE SUMMER: August 15 to September 15					SPRING PERENNIAL PLANTINGS (INITIAL INSTALLATION)					LATE SUMMER PERENNIAL PLANTINGS (REPLACEMENTS)						SPRING PERENNIAL PLANTINGS (IF NECESSARY)				LATE SUMMER PERENNIAL PLANTINGS (IF NECESSARY)					
	Period of Establishment Plant Care: Weed & Water (Included in cost of perennial plant pay item)				WEED AND WATER (FOR 30 DAYS AFTER INSTALLATION)				WEED AND WATER REPLACEMENTS (FOR 30 DAYS AFTER INSTALLATION)					WEED AND WATER (FOR 30 DAYS AFTER INSTALLATION)												
	Perennial Plant Care (After Period of Establishment Care)	PERENNIAL PLANT CARE (AS DIRECTED BY THE ENGINEER)												PERENNIAL PLANT CARE (AS DIRECTED BY THE ENGINEER)												
	Supplemental Watering (PERENNIALS)	SUPPLEMENTAL WATERING OF PERENNIALS (AS DIRECTED BY THE ENGINEER)												SUPPLEMENTAL WATERING OF PERENNIALS (AS DIRECTED BY THE ENGINEER)												
Perennial Plantings	Seeding, Class 1B & 2A SPRING: April 1 to June 15 FALL: August 1 to November 1 DORMANT: November 2 to March 31			SPRING SEEDING (I-290)					FALL SEEDING (IF NEEDED)				DORMANT SEEDING (IF NEEDED)			SPRING SEEDING (IF NEEDED)			FALL SEEDING (IF NEEDED)							
	Sodding, Salt Tolerant SPRING: March 15 to June 1 FALL: August 1 to Sept 15 DORMANT: Sept 16 to March 15			SPRING SODDING (I-290)					FALL SODDING (IF NEEDED)				SPRING SODDING (IF NEEDED)			FALL SODDING (IF NEEDED)										
	Mowing & Mowing Special (ACRE)	AS DIRECTED BY THE ENGINEER												IF NEEDED												
	Weed Control, Broadleaf In Turf SPRING: April 1 to May 30 FALL: August 15 to September 15			SPRING WEED CONTROL (I-290)					FALL WEED CONTROL																	
Turf Restoration	Mulch Placement, 4"	MULCH PLACEMENT AROUND EXISTING TREES (I-290)																								
	Transplanted Salvaged Trees			TRANSPLANT SALVAGED TREES (PRAIRIE VIEW REST AREAS)																						

MOEEL Defauld  
FILE NAME: p:\illinois\paw\_borndy.com\2024\DOT Documents\DOT Office\Dist\dist\_1\p\62v15\62v15\62v15-landscap.dgn

USER NAME = melissa.delrosario	DESIGNED -	REVISED -
DRAWN -	REVISOR -	
PLOT SCALE = 100.0369 ' / in.	CHECKED -	REVISED -
PLOT DATE = 10/5/2023	DATE -	REVISED -

**STATE OF ILLINOIS  
DEPARTMENT OF TRANSPORTATION**

**CALENDAR OF CONSTRUCTION & ESTABLISHMENT WORK  
LANDSCAPE REPAIR AND RESTORATION**

SCALE: SHEET OF SHEETS STA. TO STA.

F.A. RTE.	SECTION	COUNTY	TOTAL SHEETS	SHEET NO.
VAR	2023 VAR LANDSCAPE	VARIOUS	27	6
			CONTRACT NO. 62V15	
ILLINOIS   FED. AID PROJECT				



**LANDSCAPE REPAIR  
WORK ORDER  
CONTRACT 62V15**

WORK ORDER NUMBER	PAGE: _____ OF _____
-------------------	----------------------

MARKED ROUTE	LOCATION	COUNTY	MUNICIPALITY

WORK ORDER SUMMARY		
PAY CODE	PAY ITEM	QUANTITY

SPECIAL INSTRUCTIONS/ CALCULATIONS
---------------------------------------

AUTHORIZATION OF WORK ORDER	CERTIFICATION OF COMPLETED WORK
IDOT Resident Engineer/Technician Signature	Contractor Signature
Date Work Order Issued	Date Work Order Completed
Contractor Initials	

OFFICE USE ONLY	INSPECTION AND ACCEPTANCE OF COMPLETED WORK
Prepared by: _____	Inspector Signature
Measured in place by: _____	
Calculated by: _____	
Checked by: _____	
	Date Work Ordered Inspected and Accepted
This is to certify that the work has been completed in conformance with contract	

THIS WORK ORDER IS A SAMPLE FORM ONLY.

**SAMPLE**

MODEL: Default  
FILE NAME: P:\Illinois\pub\hantley.com\PI\DOT\Documents\DOT\_Offices\District\_1\Projects\62V15\23\CADD\Structures\62V1523-shr-landscape.dgn

USER NAME = mellssa.delrosario	DESIGNED -	REVISED -
PLOT SCALE = 100.0024' / in.	DRAWN -	REVISED -
PLOT DATE = 7/12/2023	CHECKED -	REVISED -
	DATE -	REVISED -

**STATE OF ILLINOIS  
DEPARTMENT OF TRANSPORTATION**

<b>WORK ORDER</b>	
<b>LANDSCAPE REPAIR AND RESTORATION</b>	
SCALE:	SHEET OF SHEETS STA. TO STA.

F.A. RTE.	SECTION	COUNTY	TOTAL SHEETS	SHEET NO.
VAR	2023 VAR LANDSCAPE	VARIOUS	27	7
CONTRACT NO. 62V15				
ILLINOIS FED. AID PROJECT				

DESCRIPTION	SIZE	MAINTENANCE QUANTITIES	I-290 QUANTITIES	TOTAL QUANTITIES	LOCATIONS															
					SOUTH COOK					CENTRAL COOK										
					I-57 (NB) EXPRESSWAY (S/O 119TH TO S/O 127TH ST) CALUMET PARK	I-57 (SB) EXPRESSWAY (S/O 119TH TO S/O 127TH ST) CALUMET PARK	I-57 SB REST AREA (MONFF)	I-57 NB REST AREA (MONEE)	HARLEM AVE (70TH TO 111TH) WORTH, PALOS HILLS, & BRIDGEVIEW	I-90 (EB) ADDISON ST EXIT RAMP (CHICAGO)	I-290 (EB) MANNHEIM RD TO HARLEM AVE (HILLSIDE, WESTCHESTER, BFI I WOOD, MAYWOOD, FOREST PARK, & BROADVIEW)	I-290 (WB) MANNHEIM RD TO HARLEM AVE (HILLSIDE, WESTCHESTER, BFI I WOOD, MAYWOOD, FOREST PARK, & BROADVIEW)	I-290 (EB) RACINE ST TO HARLEM AVE (OAK PARK & CHICAGO)	I-290 (WB) RACINE ST TO HARLEM AVE (OAK PARK & CHICAGO)						
ACER X FREEMANNII 'MATADOR'	2.5"	8	0	8		8				7										
ACER X FREEMANNII 'MARMO'	2"	7	0	7																
AESCULUS FLAVA	2"	9	0	9	9															
CATALPA SPECIOSA	2"	19	0	19		9				10										
CARYA OVATA	1.75"	7	0	7	7															
CELTIS OCCIDENTALIS	2"	22	0	22	9	9				4										
CLADASTRIS KENTUKEA	2"	7	0	7		7														
GLEDTISIA TRIACANTHOS VAR INERMIS 'IMPERIAL'	2"	12	0	12	12															
GLEDTISIA TRIACANTHOS VAR INERMIS 'SKYLINE'	2"	17	0	17						17										
GYMNOCLADUS DIOICUS	2"	19	0	19	11					8										
LIRIODENDRON TULIPIFERA	2"	7	0	7		7														
OSTRAYA VIRGINIANA	2"	3	0	3						3										
QUERCUS BICOLOR	2"	22	0	22		14				8										
QUERCUS MACROCARPA	2"	10	0	10	10															
QUERCUS MUEHLENBERGII	2"	10	0	10	5	5														
QUERCUS ROBUR X BICOLOR 'NADLER'	2"	9	0	9																
QUERCUS VELUTINA	2"	18	0	18	9	9														
TAXODIUM DISTICHUM	2"	10	0	10		7				3										
TILIA AMERICANA 'REDMOND'	2"	7	0	7						7										
ULMUS AMERICANA 'PRINCETON'	2"	14	0	14						14										
<b>total shade trees</b>		<b>237</b>	<b>0</b>	<b>237</b>	<b>72</b>	<b>75</b>	<b>0</b>	<b>0</b>	<b>81</b>	<b>0</b>										
CERCIS CANADENSIS	5'	10	0	10		10														
MALUS 'ADAMS'	5'	3	0	3						3										
MALUS 'DOLGO'	2"	10	0	10	10															
MALUS 'RUBY DAZE'	2"	18	0	18																
MALUS 'PROFUSION'	2"	8	0	8						8										
MALUS 'GOLDEN RAINDROPS'	2"	5	0	5						5										
<b>total intermediate trees</b>		<b>54</b>	<b>0</b>	<b>54</b>	<b>10</b>	<b>10</b>	<b>0</b>	<b>0</b>	<b>13</b>	<b>3</b>										
PICEA ABIES	5'	15	0	15	7	8														
PICEA GLAUCA VAR. DENSATA	5'	13	0	13	6	7														
PINUS FLEXILIS 'VANDERWOLF'S PYRAMID'	5'	15	0	15	7	8														
<b>total evergreen trees</b>		<b>43</b>	<b>0</b>	<b>43</b>	<b>20</b>	<b>23</b>	<b>0</b>	<b>0</b>	<b>0</b>	<b>0</b>										
<b>TOTAL TREES</b>		<b>334</b>	<b>0</b>	<b>334</b>	<b>102</b>	<b>108</b>	<b>0</b>	<b>0</b>	<b>94</b>	<b>3</b>										

MODEL: C:\p\ref\...  
 FILE: M:\E:\p\ref\...  
 PROJECT: D:\15323\COO\DATA\Structures\0115323\_sht-landscp.dgn

USER NAME = melissa.odrosario	DESIGNED -	REVISED -
	DRAWN -	REVISED -
PLOT SCALE = 100.0297' / in.	CHECKED -	REVISED -
PLOT DATE = 10/5/2023	DATE -	REVISED -

**STATE OF ILLINOIS**  
**DEPARTMENT OF TRANSPORTATION**

<b>LOCATION AND WORK SCHEDULE</b> <b>LANDSCAPE REPAIR AND RESTORATION</b>			
SCALE:	SHEET	OF SHEETS	STA. TO STA.

F.A. RTE.	SECTION	COUNTY	TOTAL SHEETS	SHEET NO.
VAR	2023 VAR LANDSCAPE	VARIOUS	27	8
				CONTRACT NO. 62V15
		ILLINOIS	FED. AID PROJECT	

DESCRIPTION	SIZE	MAINTENANCE QUANTITIES	I-290 QUANTITIES	TOTAL QUANTITIES	LOCATIONS												
					SOUTH COOK					CENTRAL COOK							
					I-57 (NB) EXPRESSWAY (S/O 119TH TO S/O 127TH ST) CALUMET PARK	I-57 (SB) EXPRESSWAY (S/O 119TH TO S/O 127TH ST) CALUMET PARK	I-57 SB REST AREA (MONEE)	I-57 NB RESI AREA (MONEE)	HARLEM AVE (70TH TO 111H) WORTH, PALOS HILLS, & BRIDGEVIEW	I-90 (EB) ADDISON ST EXII RAMP (CHICAGO)	I-290 (EB) MANNHEIM RD TO HARLEM AVE (HILLSIDE, WESTCHESTER, BELLWOOD, MAYWOOD, FOREST PARK, & BROADVIEW)	I-290 (WB) MANNHEIM RD TO HARLEM AVE (HILLSIDE, WESTCHESTER, BELLWOOD, MAYWOOD, FOREST PARK, & BROADVIEW)	I-290 (EB) RACINE ST TO HARLEM AVE (OAK PARK & CHICAGO)	I-290 (WB) RACINE ST TO HARLEM AVE (OAK PARK & CHICAGO)			
BUDDLEIA DAVIDII 'BLUE CHIP' LO & BEHOLD	#5	0	12	12												12	
HYDRANGEA ARBORESCENS 'ANNABELLE'	#5	0	25	25												12	13
HYDRANGEA PANICULATA 'LITTLE QUICK FIRE'	#5	0	25	25												12	13
RHUS AROMATICA 'GRO-LOW'	#5	10	0	10						10							
ROSA RUGOSA 'FRAU DAGMAR HASTRUP'	#3	8	0	8						8							
total shrubs		18	62	18	0	0	0	0	0	18	0	0	0	36	26		
PERENNIAL PLANTS, ORNAMENTAL TYPE, GALLON POT	GAL	13	11	24			0.41	0.4		1.19				5.0	6.0		
PERENNIAL PLANT CARE	SQ YDS	900	700	1600			100	100						350	350		
MOWING	ACRE	5.04	0	5.04							*	*	*	*	*	*	*
MOWING (SPECIAL)	ACRE	0	0	0							*	*	*	*	*	*	*
WEED CONTROL, NON-SELECTIVE & NON-RESIDUAL	GALLON			2.5							*	*	*	*	*	*	*
WEED CONTROL, BROADLEAF IN TURF	POUND			5							*	*	*	*	*	*	*
TRANSPLANTED SALVAGED TREES	EACH	13	0	13			5	8									
TOPSOIL FURNISH AND PLACE, 2"	SQ YD	3000	0	3000							*	*	*	*	*	*	*
TOPSOIL FURNISH AND PLACE, 4"	SQ YD	6000	3000	9000								3000					
NITROGEN FERTILIZER NUTRIENT	POUND	300	0	300							*	*	*	*	*	*	*
PHOSPHORUS FERTILIZER NUTRIENT	POUND	300	0	300							*	*	*	*	*	*	*
POTASSIUM FERTILIZER NUTRIENT	POUND	300	0	300							*	*	*	*	*	*	*
SEEDING, CLASS 2A	ACRE	1.5	0	1.5							*	*	*	*	*	*	*
EROSION CONTROL BLANKET (REG)	SQ YD	7260	0	7260							*	*	*	*	*	*	*
SODDING, SALT TOLERANT	SQ YD	1500	0	1500										*	*	*	*
SEEDING, CLASS 1B	ACRE	1.5	0	1.5													
EROSION CONTROL BLANKET (SPECIAL)	SQ YD	7260	0	7260													
SUPPLEMENTAL WATERING	UNIT	180	0	180										*	*	*	*
MULCH PLACEMENT, 4"	SQ YD	0	0	0										*	*	*	*
<b>* EXACT LOCATIONS AND QUANTITIES TO BE DETERMINED IN THE FIELD</b>																	

MODEL: D:\info\... FILE NAME: ... PROJECT: ...

USER NAME = melissa.cofrosario	DESIGNED -	REVISED -
	DRAWN -	REVISED -
PLOT SCALE = 100.0273' / in.	CHECKED -	REVISED -
PLOT DATE = 10/5/2023	DATE -	REVISED -

**STATE OF ILLINOIS  
DEPARTMENT OF TRANSPORTATION**

<b>LOCATION AND WORK SCHEDULE LANDSCAPE REPAIR AND RESTORATION</b>			
SCALE:	SHEET	OF SHEETS	STA. TO STA.

F.A. RTE.	SECTION	COUNTY	TOTAL SHEETS	SHEET NO.
VAR	2023 VAR LANDSCAPE	VARIOUS	27	9
			CONTRACT NO. 62V15	
		ILLINOIS FED. AID PROJECT		

DESCRIPTION	SIZE	MAINTENANCE QTY	I-290 QUANTITIES	TOTAL QUANTITIES	LOCATIONS			
					NORTH COOK			DISTRICT ONE
					IL 83 N/O LEXINGTON DR (WHEELING)	MOUNT PROSPECT RD & ALGONQUIN RD (DES PLAINES)	N VIRN ALLEN CT & US 14 (PALATINE)	AS NEEDED
ACER X FREEMANNII 'MATADOR'	2.5"	0	0	0				
ACER X FREEMANNII 'MARMO'	2"	0	0	0				
AESCLUS FLAVA	2"	0	0	0				
CATALPA SPECIOSA	2"	0	0	0				
CARYA OVATA	1.75"	0	0	0				
CELTIS OCCIDENTALIS	2"	0	0	0				
CLADASTRIS KENTUKEA	2"	0	0	0				
GLEDITISIA TRIACANTHOS VAR INERMIS 'IMPERIAL'	2"	0	0	0				
GLEDITISIA TRIACANTHOS VAR INERMIS 'SKYLINE'	2"	0	0	0				
GYMNOCLADUS DIOICUS	2"	0	0	0				
LIRIODENDRON TULIPIFERA	2"	0	0	0				
OSTRAYA VIRGINIANA	2"	0	0	0				
QUERCUS BICOLOR	2"	0	0	0				
QUERCUS MACROCARPA	2"	0	0	0				
QUERCUS MUEHLENBERGII	2"	0	0	0				
QUERCUS ROBUR X BICOLOR 'NADLER'	2"	3	0	3	3			
QUERCUS VELUTINA	2"	0	0	0				
TAXODIUM DISTICHUM	2"	0	0	0				
TILIA AMERICANA 'REDMOND'	2"	0	0	0				
ULMUS AMERICANA 'PRINCETON'	2"	0	0	0				
total shade trees		3			3	0	0	0
CERCIS CANADENSIS	5'	0	0	0				
MALUS 'ADAMS'	5'	0	0	0				
MALUS 'DOLGO'	2"	0	0	0				
MALUS 'RUBY DAZE'	2"	6	0	6			6	
MALUS 'PROFUSION'	2"	0	0	0				
MALUS 'GOLDEN RAINDROPS	2"	0	0	0				
total intermediate trees		6			0	0	6	0
PICEA ABIES	5'	0	0	0				
PICEA GLAUCA VAR. DENSATA	5'	0	0	0				
PINUS FLEXILIS 'VANDERWOLF'S PYRAMID'	5'	0	0	0				
total evergreen trees		0	0	0	0	0	0	0
TOTAL TREES		9	0	0	3	0	6	0

MODEL Path: \\libas-cw-bentley.com\NWDOT\Documents\DOT\_Offices\DelRosario\Projects\115223\CADD\Structures\0115223-sh-landsc.dgn  
 FILE NAME: \\libas-cw-bentley.com\NWDOT\Documents\DOT\_Offices\DelRosario\Projects\115223\CADD\Structures\0115223-sh-landsc.dgn

USER NAME = melissa.delrosario	DESIGNED -	REVISED -
	DRAWN -	REVISED -
PLOT SCALE = 100.0523 ' / in.	CHECKED -	REVISED -
PLOT DATE = 10/5/2023	DATE -	REVISED -

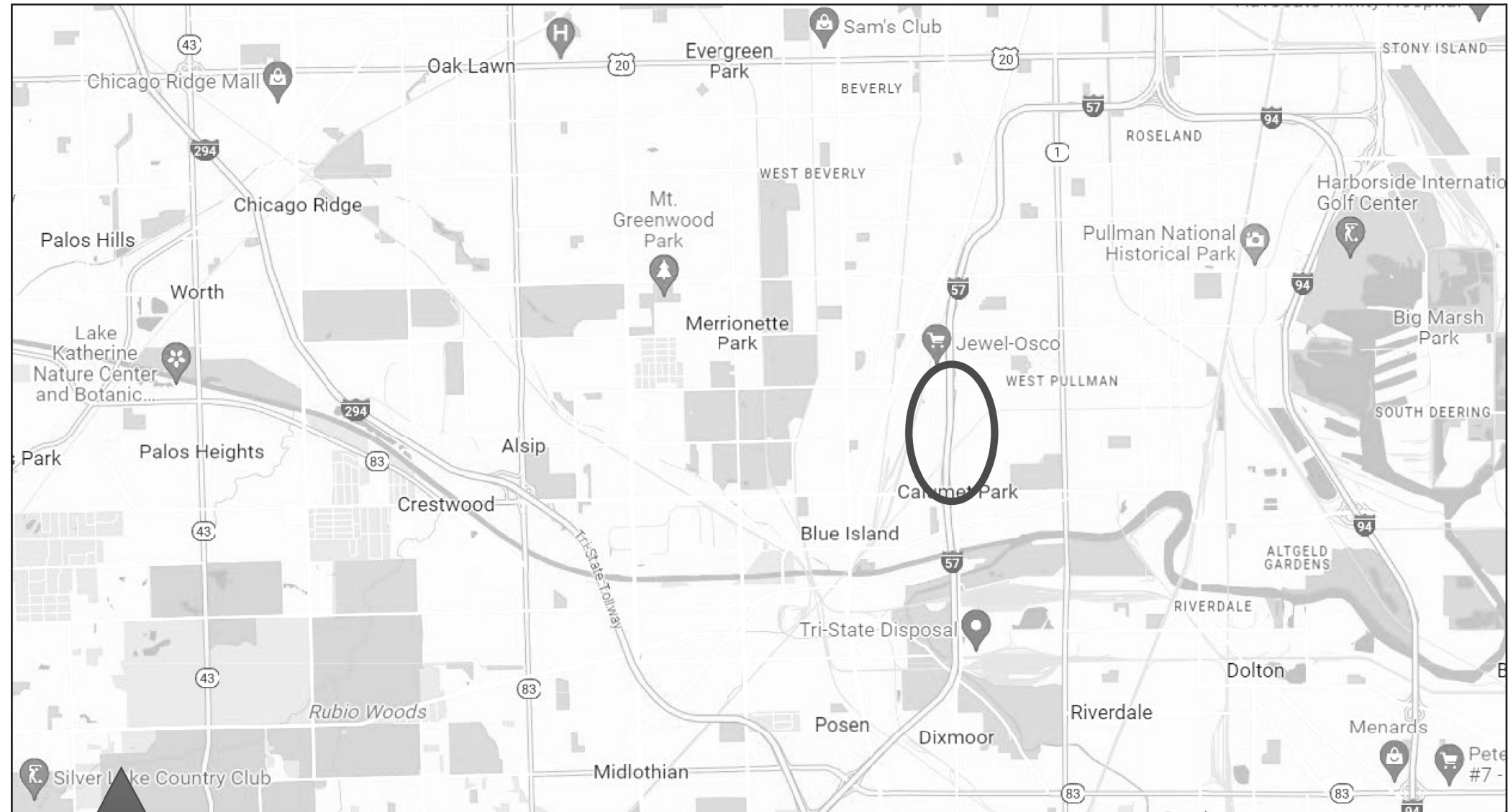
**STATE OF ILLINOIS  
DEPARTMENT OF TRANSPORTATION**

<b>LOCATION AND WORK SCHEDULE</b>			
<b>LANDSCAPE REPAIR AND RESTORATION</b>			
SCALE:	SHEET	OF SHEETS	STA. TO STA.

F.A. RTE.	SECTION	COUNTY	TOTAL SHEETS	SHEET NO.
VAR	2023 VAR LANDSCAPE	VARIOUS	27	9A
			CONTRACT NO. 62V15	
ILLINOIS FED. AID PROJECT				







**62V15 – SPRING 2024  
I-57 NORTHBOUND (SOUTH OF 127<sup>TH</sup> ST TO SOUTH OF 119<sup>TH</sup> ST)  
CALUMET PARK, IL**

MODEL: Default  
FILE NAME: p:\allstate\w\benfry.com\PI\DOT\Documents\DOT - Office\District 1\Project\62V15\23\CAD\Structures\62V1523-62V15-62V15.dgn

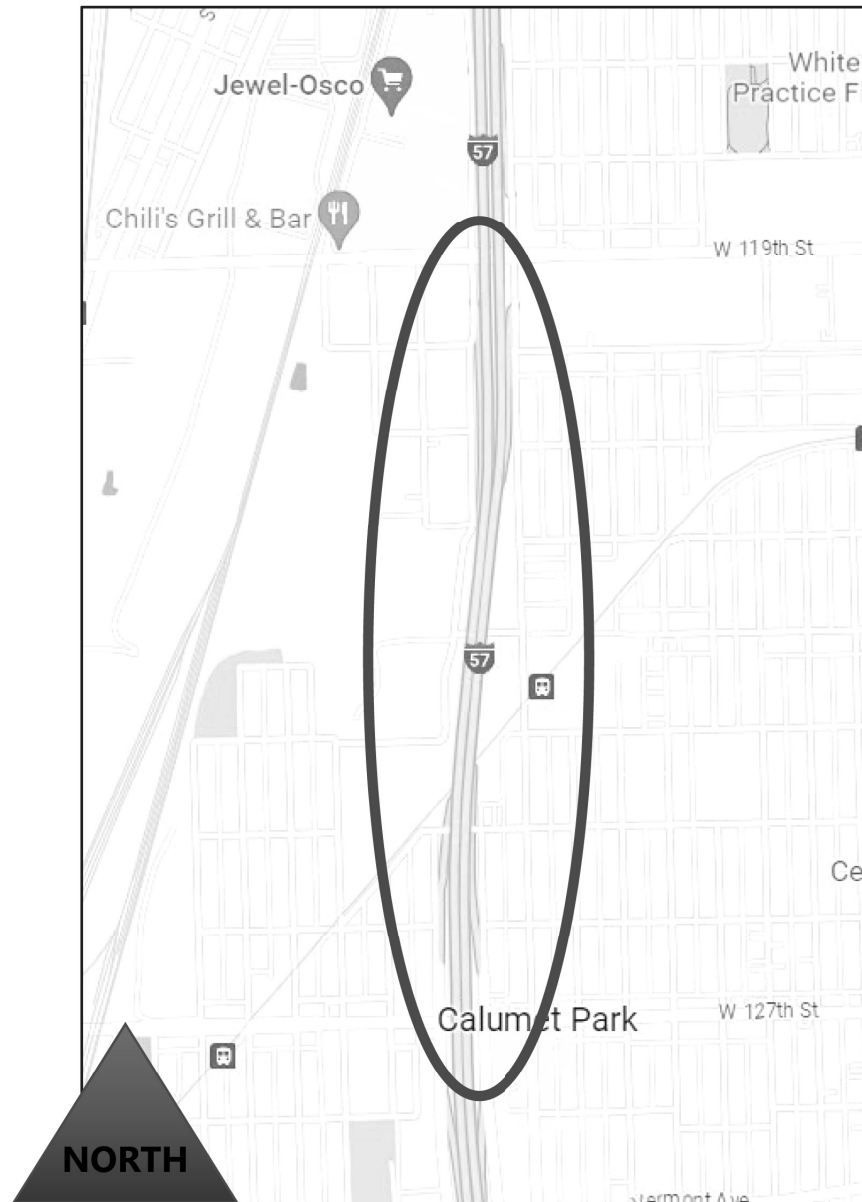
USER NAME =	mellissadelrosario	DESIGNED -	REVISD -
		DRAWN -	REVISD -
PLOT SCALE =	100,3024' / in.	CHECKED -	REVISD -
PLOT DATE =	7/12/2023	DATE -	REVISD -

**STATE OF ILLINOIS  
DEPARTMENT OF TRANSPORTATION**

**I-57 NB (S/O 127TH ST TO S/O 119TH ST)  
LANDSCAPE REPAIR & RESTORATION**

SCALE: SHEET OF SHEETS STA. TO STA.

F.A. RTE.	SECTION	COUNTY	TOTAL SHEETS	SHEET NO.
VAR	2023 VAR LANDSCAPE	VARIOUS	27	10
CONTRACT NO. 62V15			ILLINOIS FED. AID PROJECT	



**I-57 NORTHBOUND (SOUTH OF 127<sup>TH</sup> ST  
TO SOUTH OF 119<sup>TH</sup> ST)  
CALUMET PARK, IL**

**Plant the following at this location:**

- 9 – Tree, *Aesculus flava* (Sweet Yellow Buckeye), 2" Caliper, B&B
- 7 – Tree, *Carya ovata* (Shagbark Hickory), 2" Caliper, B&B
- 9 – Tree, *Celtis occidentalis* (Common Hackberry), 2" Caliper, B&B
- 12 – Tree, *Gleditsia triacanthos inermis* Imperial (Imperial Thornless Honeylocust), 2" Caliper, B&B
- 11 – Tree, *Gymnocladus dioica* (Kentucky Coffeetree), 2-1/2" Caliper, B&B
- 10 – Tree, *Quercus macrocarpa* (Bur Oak), 2" Caliper, B&B
- 5 – Tree, *Quercus muehlenbergii* (Chinkapin Oak), 2" Caliper, B&B
- 9 – Tree, *Quercus velutina* (Black Oak), 2" Caliper, B&B
- 10 – Tree, *Malus Dolgo* (Dolgo Crabapple), 2" Caliper, B&B
- 7 – Evergreen, *Picea abies* (Norway Spruce), 5' Height, B&B
- 6 – Evergreen, *Picea glauca* var. *Densata* (Black Hills Spruce), 5' Height, B&B
- 7 – Evergreen, *Pinus flexilis* Vanderwolf's Pyramid (Vanderwolf's Pyramid Limber Pine), 5' Height, B&B
- 76 – *Parthenocissus tricuspidata* (Boston Ivy), 1 –Gallon Pot (2' OC/Mulch Bed)

**\*Note: All plant material will be flagged in the field.  
Contact Fabiola Quiroz 847.705.4596.**

MODEL: Default  
 FILE: \\s:\data\paw\_bentley.com\PI\DOT\Documents\DOT\_Offices\District\_1\Projects\115323\CADD\InfoStructures\115323\_sht\_b.mxd\$ep.dgn

USER NAME = melissa.delrosario	DESIGNED -	REVISED -
	DRAWN -	REVISED -
PLOT SCALE = 100.0689' / in.	CHECKED -	REVISED -
PLOT DATE = 7/12/2023	DATE -	REVISED -

**STATE OF ILLINOIS  
DEPARTMENT OF TRANSPORTATION**

**I-57 NB (S/O 127TH ST TO S/O 119TH ST)  
LANDSCAPE REPAIR & RESTORATION**

SCALE: SHEET OF SHEETS STA. TO STA.

F.A. RTE.	SECTION	COUNTY	TOTAL SHEETS	SHEET NO.
VAR	2023 VAR LANDSCAPE	VARIOUS	27	11
CONTRACT NO. 62V15			ILLINOIS FED. AID PROJECT	



**62V15 – SPRING 2024**  
**I-57 SOUTHBOUND (SOUTH OF 127<sup>TH</sup> ST TO SOUTH OF 119<sup>TH</sup> ST)**  
**CALUMET PARK, IL**

MODEL: Default  
 FILE NAME: \\paulscaweb\entby.com\RWIDOT\Documents\DOT\_Offices\District\_1\Project\62V15\23\CAD\Bids\Structures\62V15\23\ent-bid-struct.dgn

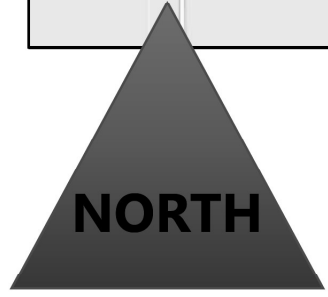
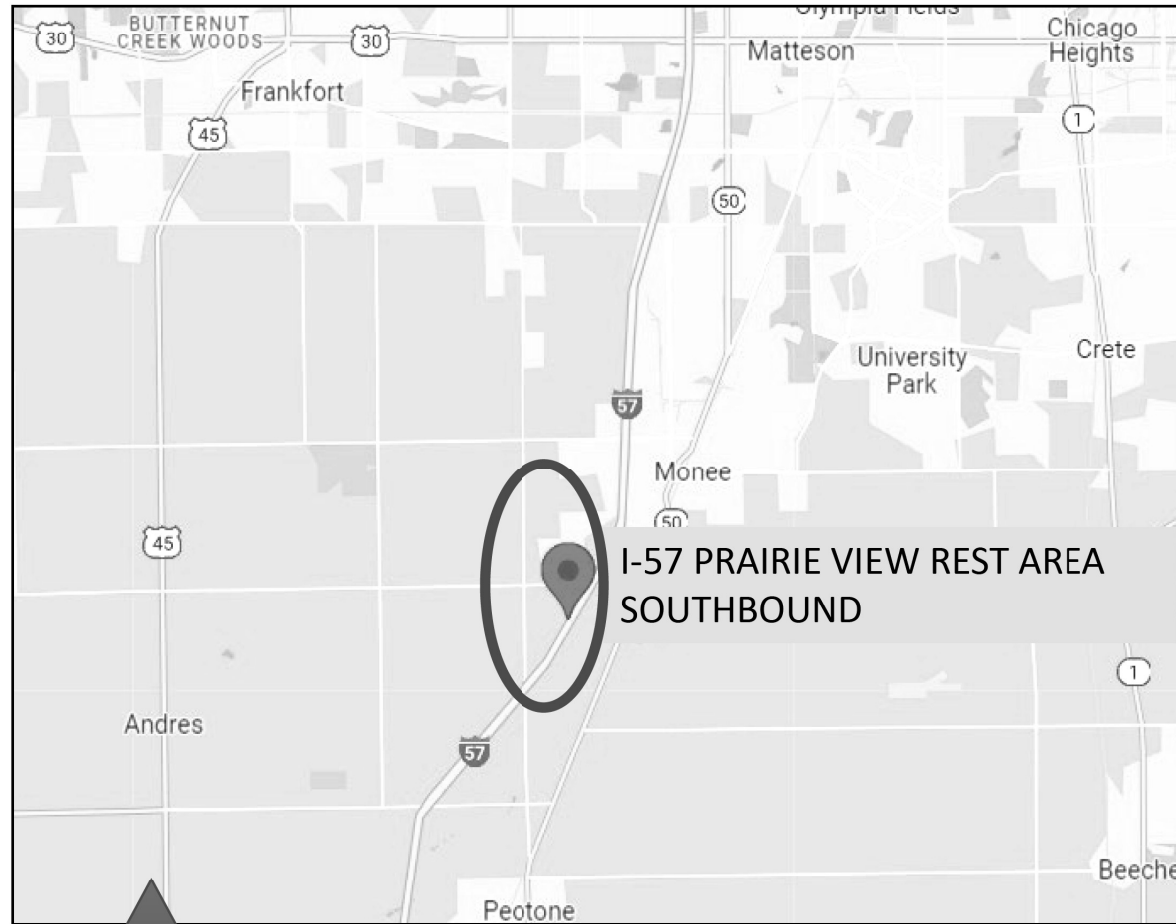
USER NAME = melissa.delrosario	DESIGNED -	REVISED -
	DRAWN -	REVISED -
PLOT SCALE = 100,3024' / in.	CHECKED -	REVISED -
PLOT DATE = 7/12/2023	DATE -	REVISED -

**STATE OF ILLINOIS**  
**DEPARTMENT OF TRANSPORTATION**

<b>I-57 NB (S/O 127TH ST TO S/O 119TH ST)</b>			
<b>LANDSCAPE REPAIR &amp; RESTORATION</b>			
SCALE:	SHEET	OF SHEETS	STA. TO STA.

F.A. RTE.	SECTION	COUNTY	TOTAL SHEETS	SHEET NO.
VAR	2023 VAR LANDSCAPE	VARIOUS	27	12
CONTRACT NO. 62V15				
ILLINOIS   FED. AID PROJECT				





**62V15 – SPRING 2024  
I-57 SOUTHBOUND  
PRAIRIEVIEW REST AREA  
MONEE, IL**

**Plant the following at this location:**

5 – Transplanted Salvaged Trees

Note: The 5 trees to be transplanted will be marked in the field and will be replanted elsewhere within the Prairieview Rest Area (SB) grounds.

.41 units – Perennial Plants, Ornamental Type, Gallon Pot:

- 10 – *Asclepias tuberosa* (Butterfly Milkweed)
- 11 – *Geum triflorum* (Prairie Smoke)
- 10 – *Oenothera macrocarpa* (Missouri Evening Primrose)
- 10 – *Vernonia lettermannii* 'Butterfly' (Iron Butterfly Narrow Leaf Ironweed)

**Contact for layout:**

Fabiola Quiroz  
847.705.4596

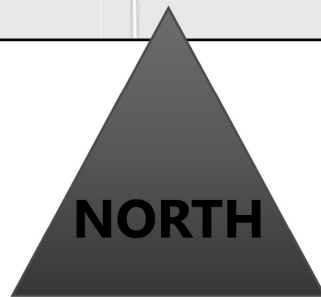
MODEL PATH: \\p1d05-cw-bentley.com\PI\DOT\Documents\DOT\_Offices\Burdet\_1\Project\62V15\23\CAD\Drawings\Structures\62V15\23\sbh-bandsr.dgn  
FILE NAME: \\p1d05-cw-bentley.com\PI\DOT\Documents\DOT\_Offices\Burdet\_1\Project\62V15\23\CAD\Drawings\Structures\62V15\23\sbh-bandsr.dgn

USER NAME = melissa.delrosario	DESIGNED -	REVISED -
	DRAWN -	REVISED -
PLOT SCALE = 100,0644' / in.	CHECKED -	REVISED -
PLOT DATE = 7/12/2023	DATE -	REVISED -

**STATE OF ILLINOIS  
DEPARTMENT OF TRANSPORTATION**

<b>I-57 SB PRAIRIEVIEW REST AREA LANDSCAPE REPAIR &amp; RESTORATION</b>			
SCALE:	SHEET	OF SHEETS	STA. TO STA.

F.A. RTE.	SECTION	COUNTY	TOTAL SHEETS	SHEET NO.
VAR	2023 VAR LANDSCAPE	VARIOUS	27	14
CONTRACT NO. 62V15				
ILLINOIS FED. AID PROJECT				



**62V15 – SPRING 2024  
I-57 NORTHBOUND  
PRAIRIE VIEW REST AREA  
MONEE, IL**

**Spring 2024**

**Plant the following at this location:**

8 – Transplanted Salvaged Trees

Note: The 8 trees to be transplanted will be marked in the field and will be replanted elsewhere within the Prairie View Rest Area (NB) grounds.

.40 units – Perennial Plants, Ornamental Type,  
Gallon Pot:

- 10 – *Asclepias tuberosa* (Butterfly Milkweed)
- 10 – *Geum triflorum* (Prairie Smoke)
- 10 – *Oenothera macrocarpa*  
(Missouri Evening Primrose)
- 10 – *Vernonia lettermannii* 'Butterfly'  
(Iron Butterfly Narrow Leaf Ironweed)

**Contact for layout:**

Fabiola Quiroz  
847.705.4596

MODEL: Data; FILE NAME: \\naillifescow-beahty.com\PIV\DOT\Documents\DOT\_Offices\DH\rdt\_3\Projects\62V15\23\CD\DATA\SIN\CURVES\01153232\gh-andres.dwg

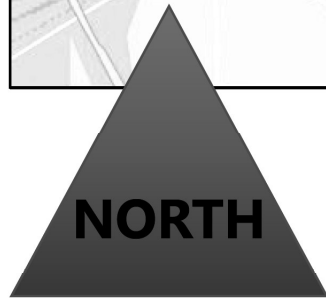
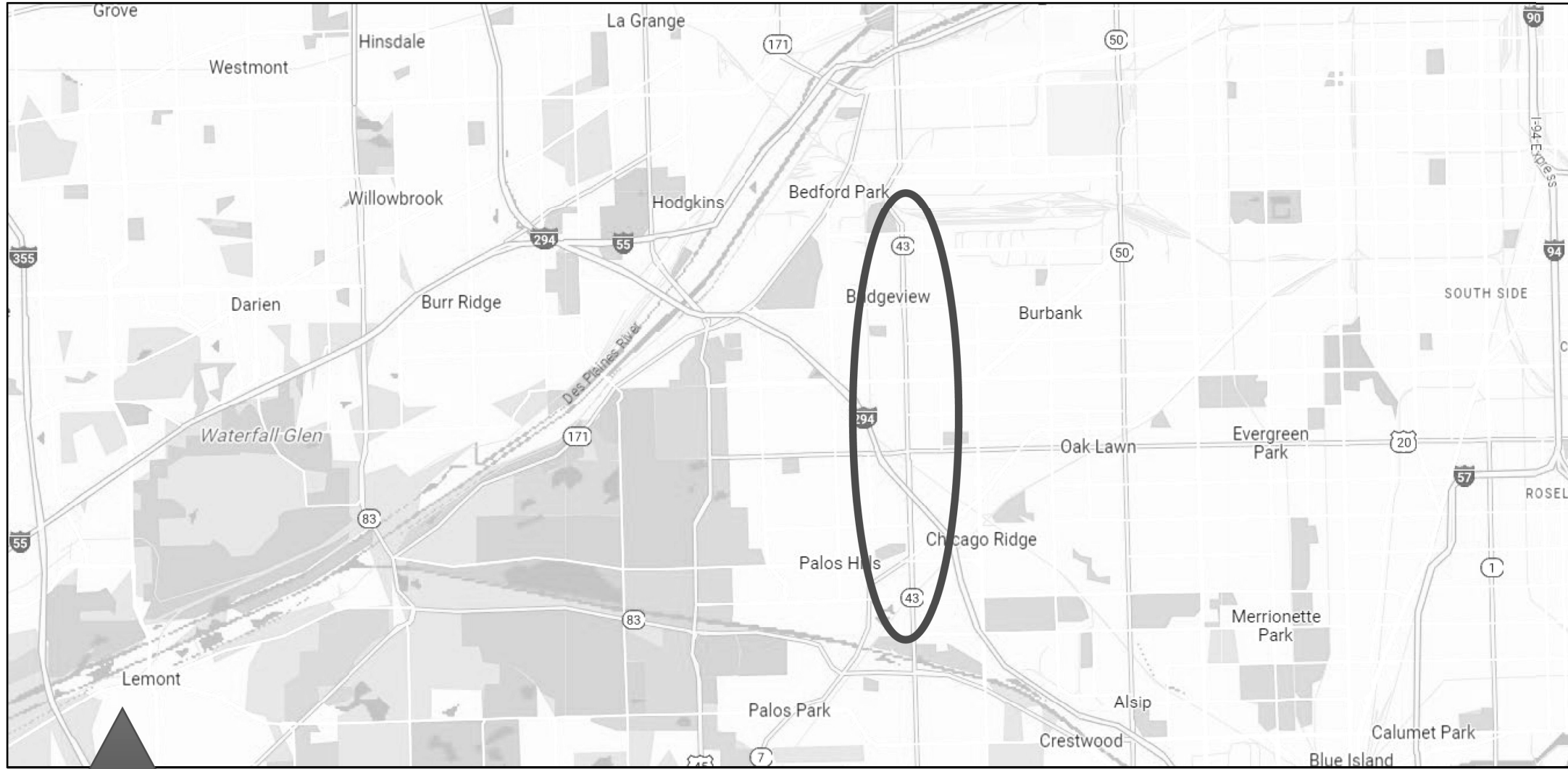
USER NAME = melissa.delrosario	DESIGNED -	REVISED -
	DRAWN -	REVISED -
PLOT SCALE = 100.3156' / in.	CHECKED -	REVISED -
PLOT DATE = 7/12/2023	DATE -	REVISED -

**STATE OF ILLINOIS  
DEPARTMENT OF TRANSPORTATION**

<b>I-57 NB PRAIRIE VIEW REST AREA LANDSCAPE REPAIR &amp; RESTORATION</b>			
SCALE:	SHEET	OF	SHEETS
	STA.	TO	STA.

F.A. RTE.	SECTION	COUNTY	TOTAL SHEETS	SHEET NO.
VAR	2023 VAR LANDSCAPE		27	15
			CONTRACT NO. 62V15	
ILLINOIS FED. AID PROJECT				





**62V15 – SPRING 2024  
HARLEM AVE (70<sup>TH</sup> ST TO 111<sup>TH</sup> ST)  
WORTH, PALOS HILLS & BRIDGEVIEW, IL**

MODEL: Default  
FILE NAME: \\ps01\share\paw\jennifery.com\PIV\DOT\Documents\DOT - Diff\es\01\bit - 1\Projects\62V15\DOT\Structures\62V15\23-shh-landscape.dgn

USER NAME = melissa.delrosario	DESIGNED -	REVISED -
	DRAWN -	REVISED -
PLOT SCALE = 100,3156' / in.	CHECKED -	REVISED -
PLOT DATE = 7/12/2023	DATE -	REVISED -

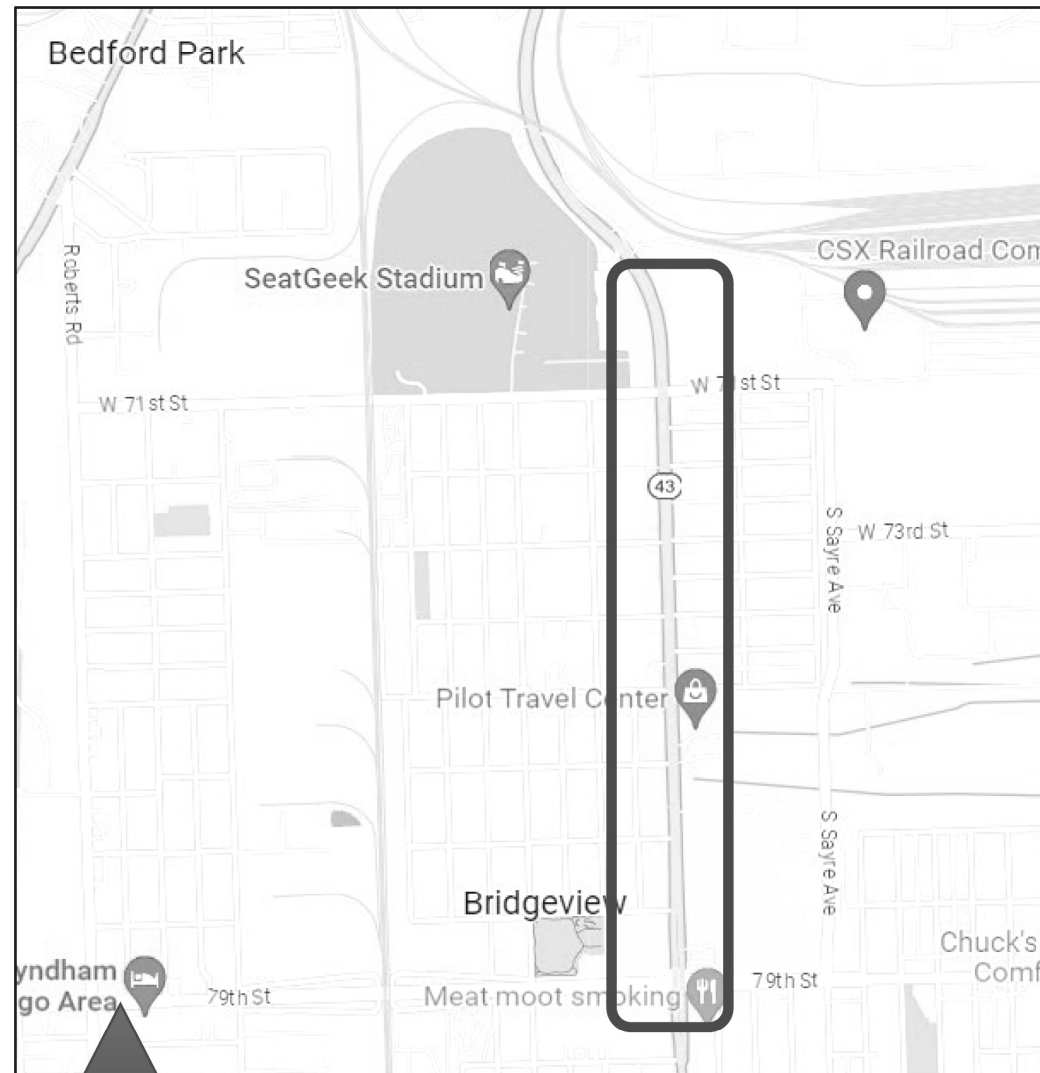
**STATE OF ILLINOIS  
DEPARTMENT OF TRANSPORTATION**

**HARLEM AVE (70TH ST TO 111TH ST)  
LANDSCAPE REPAIR & RESTORATION**

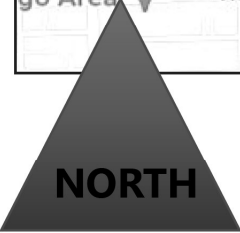
SCALE: SHEET OF SHEETS STA. TO STA.

F.A. RTE.	SECTION	COUNTY	TOTAL SHEETS	SHEET NO.
VAR	2023 VAR LANDSCAPE	VARIOUS	27	16
CONTRACT NO. 62V15				
ILLINOIS FED. AID PROJECT				





**HARLEM AVE (70<sup>TH</sup> ST TO 79<sup>TH</sup> ST)  
WORTH, PALOS HILLS & BRIDGEVIEW, IL**



**(SECTION 1 OF 3)**

**Plant the following at this location:**

- 3 – Tree, *Catalpa speciosa* (Northern Catalpa),  
2" Caliper, Balled and Burlapped
- 2 – Tree, *Celtis occidentalis* (Common Hackberry),  
2" Caliper, Balled and Burlapped
- 4 – Tree, *Gleditsia triacanthos inermis* Skyline  
(Skyline Thornless Honeylocust),  
2" Caliper, Balled and Burlapped
- 3 – Tree, *Ostrya virginiana* (American Hophornbeam),  
2" Caliper, Balled and Burlapped
- 3 – Tree, *Taxodium distichum* (Common Bald Cypress),  
2" Caliper, Balled and Burlapped
- 2 – Tree, *Ulmus americana* Princeton  
(Princeton American Elm),  
2" Caliper, Balled and Burlapped
- 5 – Tree, *Malus Golden Raindrops*  
(Gold Raindrops Crabapple),  
2" Caliper, Tree Form, Balled and Burlapped
- 2 – Tree, *Malus Profusion* (Profusion Crabapple),  
2" Caliper, Tree Form, Balled and Burlapped

**Contact for layout:**

Steve Lipkie 847.705.4173

MODEL: Default  
FILE NAME: \\pwwilliams-jambly.com\NWDOT\Documents\DOT - Offices\District - 1\Project\115323\CAD\Drawings\Structures\115323-ash-landscape.dgn

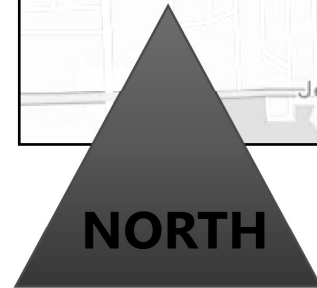
USER NAME = melissa.delrosario	DESIGNED -	REVISED -
	DRAWN -	REVISED -
PLOT SCALE = 100.3156' / in.	CHECKED -	REVISED -
PLOT DATE = 7/12/2023	DATE -	REVISED -

**STATE OF ILLINOIS  
DEPARTMENT OF TRANSPORTATION**

**HARLEM AVE (70TH ST TO 111TH ST)  
LANDSCAPE REPAIR & RESTORATION**

SCALE: SHEET OF SHEETS STA. TO STA.

F.A. RTE.	SECTION	COUNTY	TOTAL SHEETS	SHEET NO.
VAR	2023 VAR LANDSCAPE	VARIOUS	27	17
ILLINOIS FED. AID PROJECT			CONTRACT NO. 62V15	



**HARLEM AVE (79<sup>TH</sup> ST TO 92<sup>ND</sup> PL)  
WORTH, PALOS HILLS & BRIDGEVIEW, IL**

**Contact for layout:**  
Steve Lipkie  
847.705.4173

**(SECTION 2 OF 3)**

**Plant the following at this location:**

- 3 – Tree, *Acer x freemanii* Marmo (Marmo Freeman Maple), 2" Caliper, Balled and Burlapped
- 2 – Tree, *Catalpa speciosa* (Northern Catalpa), 2" Caliper, Balled and Burlapped
- 2 – Tree, *Celtis occidentalis* (Common Hackberry), 2" Caliper, Balled and Burlapped
- 13 – Tree, *Gleditsia triacanthos inermis* Skyline (Skyline Thornless Honeylocust), 2" Caliper, Balled and Burlapped
- 5 – Tree, *Gymnocladus dioica* (Kentucky Coffeetree), 2-1/2" Caliper, Balled and Burlapped
- 2 – Tree, *Quercus bicolor* (Swamp White Oak), 2" Caliper, Balled and Burlapped
- 7 – Tree, *Tilia americana* Redmond (Redmond American Linden), 2" Caliper, Balled and Burlapped
- 7 – Tree, *Ulmus americana* Princeton (Princeton American Elm), 2" Caliper, Balled and Burlapped
- 6 – Tree, *Malus Profusion* (Profusion Crabapple), 2" Caliper, Balled and Burlapped

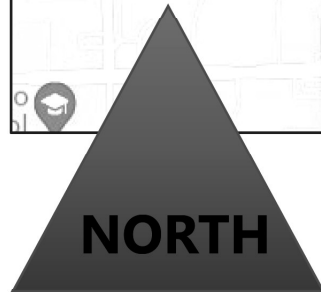
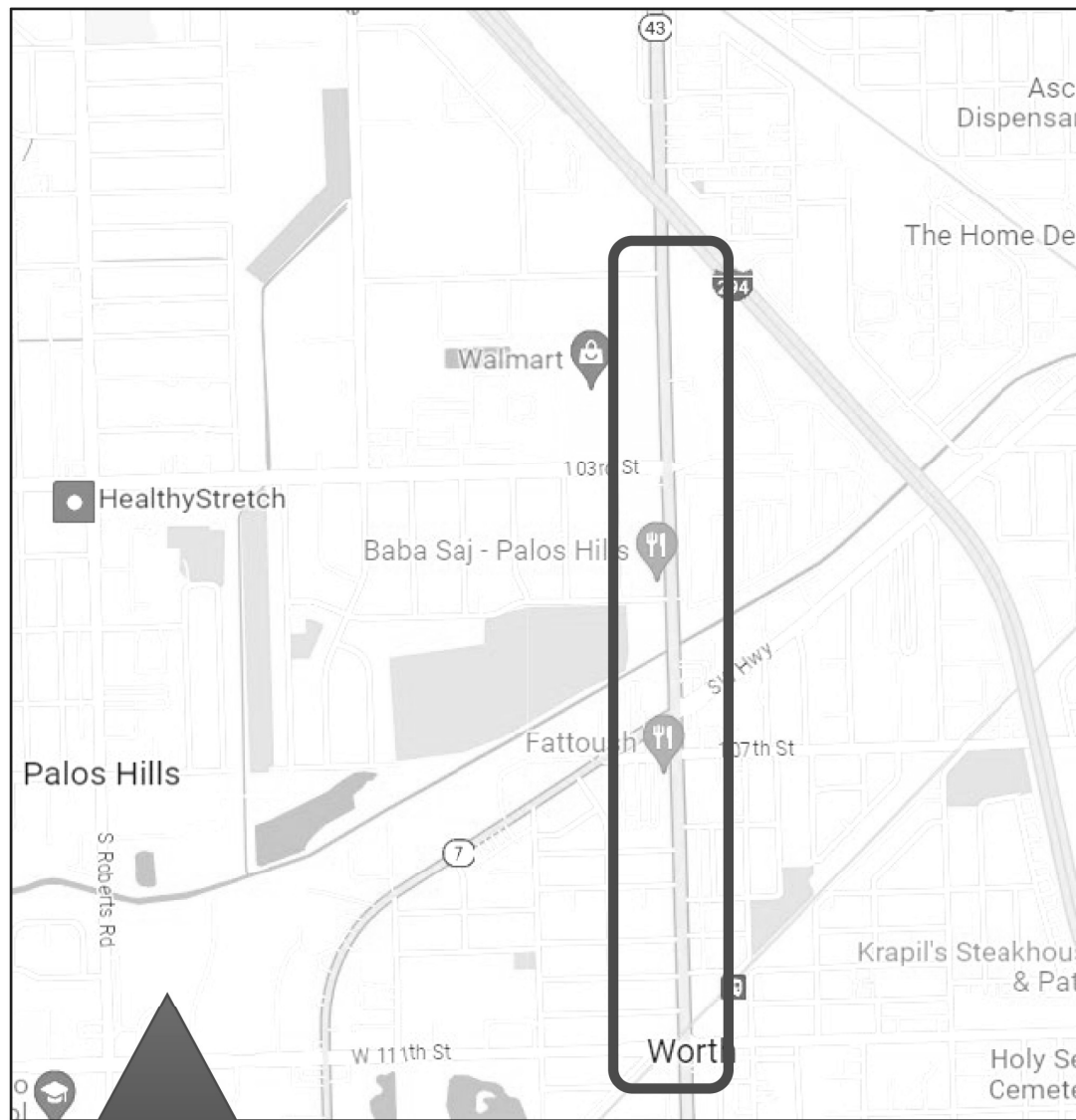
MODEL: Default  
FILE NAME: P:\Work\paw\_bentley.com\PIV\DOT\Documents\DOT - Offices\B\B\1.ctb - Projects\115232\CAD\B\B\Structures\115232-sh-landscape.dgn

USER NAME = melissa.delrosario	DESIGNED -	REVISED -
	DRAWN -	REVISED -
PLOT SCALE = 100.3156' / in.	CHECKED -	REVISED -
PLOT DATE = 7/12/2023	DATE -	REVISED -

**STATE OF ILLINOIS  
DEPARTMENT OF TRANSPORTATION**

<b>HARLEM AVE (79TH ST TO 92ND PL) LANDSCAPE REPAIR &amp; RESTORATION</b>	
SCALE:	SHEET OF SHEETS STA. TO STA.

F.A. RTE.	SECTION	COUNTY	TOTAL SHEETS	SHEET NO.
VAR	2023 VAR LANDSCAPE	VARIOUS	27	18
CONTRACT NO. 62V15				
ILLINOIS FED. AID PROJECT				



**HARLEM AVE (100<sup>TH</sup> PL TO 111<sup>TH</sup> ST)  
WORTH, PALOS HILLS & BRIDGEVIEW, IL**

**SECTION 3 OF 3**

**Plant the following at this location:**

- 4 – Tree, *Acer x freemanii* Marmo (Marmo Freeman Maple), 2" Caliper, Balled and Burlapped
- 5 – Tree, *Catalpa speciosa* (Northern Catalpa), 2" Caliper, Balled and Burlapped
- 6 – Tree, *Celtis occidentalis* (Common Hackberry), 2" Caliper, Balled and Burlapped
- 3 – Tree, *Gymnocladus dioica* (Kentucky Coffeetree), 2-1/2" Caliper, Balled and Burlapped
- 6 – Tree, *Quercus bicolor* (Swamp White Oak), 2" Caliper, Balled and Burlapped

**Contact for layout:**

Steve Lipkie  
847.705.4173

MODEL: Default  
FILE NAME: P:\muller-pw\_bentley.com\FW\DOT\Documents\DOT - Offices\lartfct - l\projects\11323\Cadd\lartfct\11323-shl-landscape.dgn

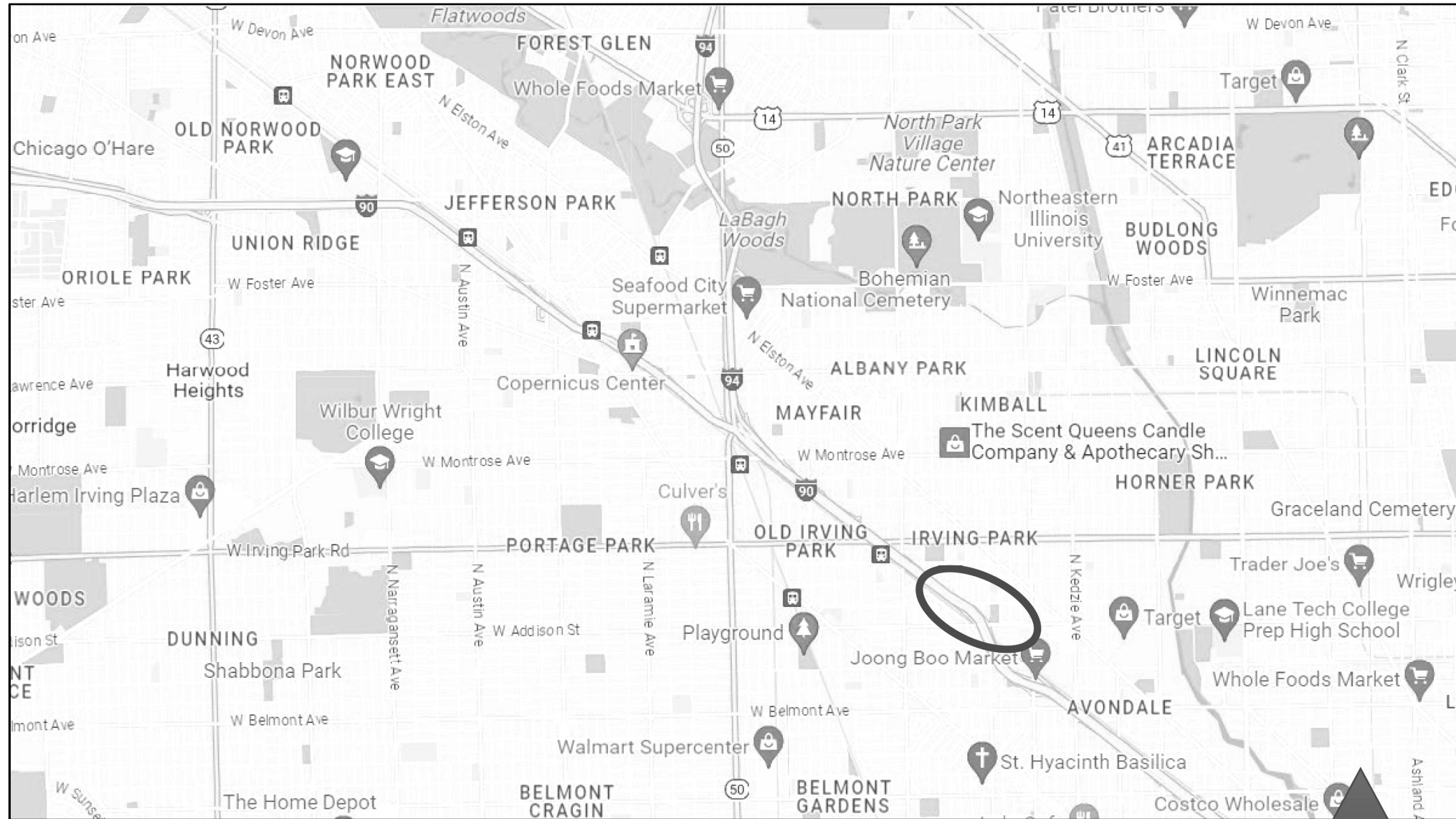
USER NAME = melissa.rosario	DESIGNED -	REVISED -
	DRAWN -	REVISED -
PLOT SCALE = 100.3156' / in.	CHECKED -	REVISED -
PLOT DATE = 7/12/2023	DATE -	REVISED -

**STATE OF ILLINOIS  
DEPARTMENT OF TRANSPORTATION**

**HARLEM AVE (100TH PL TO 111TH ST)  
LANDSCAPE REPAIR & RESTORATION**

SCALE: SHEET OF SHEETS STA. TO STA.

F.A. RTE.	SECTION	COUNTY	TOTAL SHEETS	SHEET NO.
VAR	2023 VAR LANDSCAPE	VARIOUS	27	19
CONTRACT NO. 62V15				
ILLINOIS FED. AID PROJECT				



**62V15 – SPRING 2024  
I-90 (EB) ADDISON ST EXIT RAMP  
CHICAGO, IL**



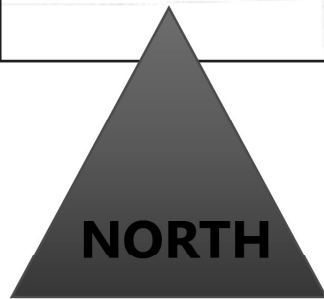
MODEL: Default  
 FILE: Model: \\huldas-cw-bentley.com\huldas\Documents\DOT Office\huldas\1\Projects\62V15\2023\06\01\Structures\62V1522-shh-backr.dgn

USER NAME = melissa.delrosario	DESIGNED -	REVISED -
	DRAWN -	REVISED -
PLOT SCALE = 100,0535' / in.	CHECKED -	REVISED -
PLOT DATE = 7/12/2023	DATE -	REVISED -

**STATE OF ILLINOIS  
DEPARTMENT OF TRANSPORTATION**

<b>I-90 (EB) ADDISON ST EXIT RAMP LANDSCAPE REPAIR &amp; RESTORATION</b>			
SCALE:	SHEET	OF SHEETS	STA. TO STA.

F.A. RTE.	SECTION	COUNTY	TOTAL SHEETS	SHEET NO.
VAR	2023 VAR LANDSCAPE	VARIOUS	27	20
CONTRACT NO. 62V15				
ILLINOIS FED. AID PROJECT				



**I-90 (EB) ADDISON ST EXIT RAMP  
CHICAGO, IL**

**Contact for layout:**  
Melissa del Rosario  
847.705.4391

**Spring 2024**

**Plant the following at this location:**

3 – Tree, Malus Adams (Adams Crabapple),  
5' Height, Clump Form, Balled and Burlapped

10 – Shrub, Rhus aromatica Gro-low  
(Gro-low Fragrant Sumac), 5 – Gallon

8 – Shrub, Rosa rugosa Frau Dagmar Hartopp  
(Frau Dagmar Hastrup Rugosa Rose),  
Container Grown, 5 – Gallon

1.19 units – Perennial Plants, Ornamental Type,  
Gallon Pot:

15 – Asclepias tuberosa (Butterfly Milkweed)

40 – Calamintha nepeta 'Montrose White'  
(Montrose White Calamintha)

19 – Echinacea x 'Julia'  
(Butterfly Julia Coneflower)

15 – Monarda didyma 'Pardon My Cerise'  
(Pardon My Cerise Beebalm)

15 – Rudbeckia fulgida 'Goldstrum'  
(Goldstrum Black-eyed Susan)

15 – Salvia nemorosa 'Mainacht'  
May Knight Salvia

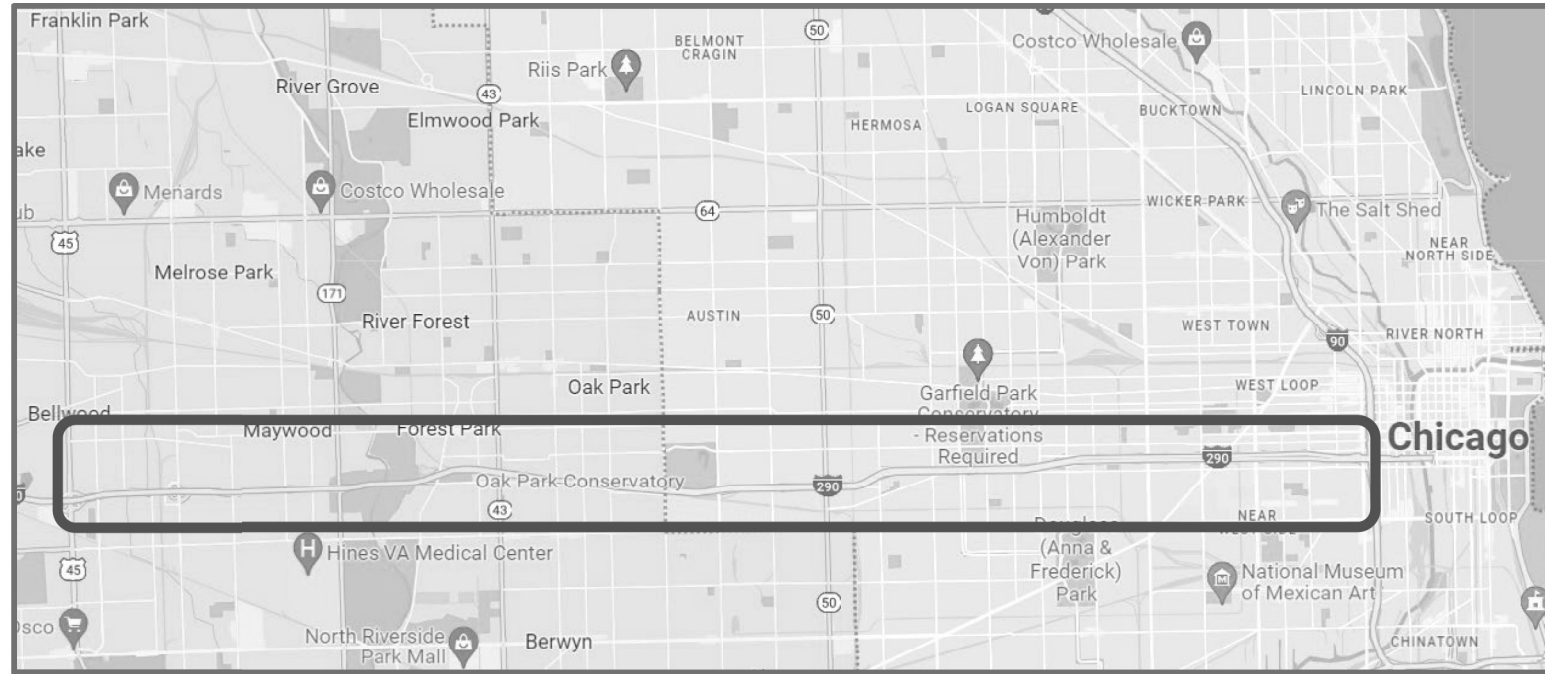
MODEL: Default  
 FILE: \\a:\e\p\delrosario\m\rosario\I-90\EB\Addison\Structure\15223\CAD\Drawings\Structure\15223-eh-landscape.dgn

USER NAME = melissa.delrosario	DESIGNED -	REVISED -
PLOT SCALE = 1/8" = 1'-0"	DRAWN -	REVISED -
PLOT DATE = 7/12/2023	CHECKED -	REVISED -
	DATE -	REVISED -

**STATE OF ILLINOIS  
DEPARTMENT OF TRANSPORTATION**

<b>I-90 EB ADDISON EXIT RAMP LANDSCAPE REPAIR &amp; RESTORATION</b>			
SCALE:	SHEET	OF	SHEETS
	STA.		TO STA.

F.A. RTE.	SECTION	COUNTY	TOTAL SHEETS	SHEET NO.
VAR	2023 VAR LANDCAPE	VARIOUS	27	21
			CONTRACT NO. 62V15	
ILLINOIS FED. AID PROJECT				



## Spring 2024

### Plant the following at this location:

12 – Shrub, Buddleia ‘Blue Chip’ Lo & Behold (Blue Chip Dwarf Butterfly Bush), Container Grown, 5-Gallon

25 – Shrub, Hydrangea paniculata Little Quick Fire (Little Quick Fire Hydrangea), Container Grown, 5 - Gallon

25 – Shrub, Hydrangea arborescens Annabelle (Annabelle Smooth Hydrangea), 2' Height, Container

11.0 units – Perennial Plants, Ornamental Type, Gallon Pot:

List will be provided at the Preconstruction meeting



**I-290 (EB & WB) MANNHEIM ROAD TO RACINE AVENUE  
HILLSIDE, WESTCHESTER, BELLWOOD, MAYWOOD, FOREST PARK,  
BROADVIEW, OAK PARK, & CHICAGO, IL**

### Contact for layout:

Fabiola Quiroz & Melissa del Rosario  
847.705.4596      847.705.4391

MODEL: Default; FILE NAME: \\p01001-cv4-behlfy.com\p01001\DOT\Documents\DOT Office\District 1\Project\1152231\CADD\GIS\Structures\0115223-sh-landscp.dgn

USER NAME = melissa.delrosario	DESIGNED -	REVISED -
	DRAWN -	REVISED -
PLOT SCALE = 100.0538' / in.	CHECKED -	REVISED -
PLOT DATE = 10/6/2023	DATE -	REVISED -

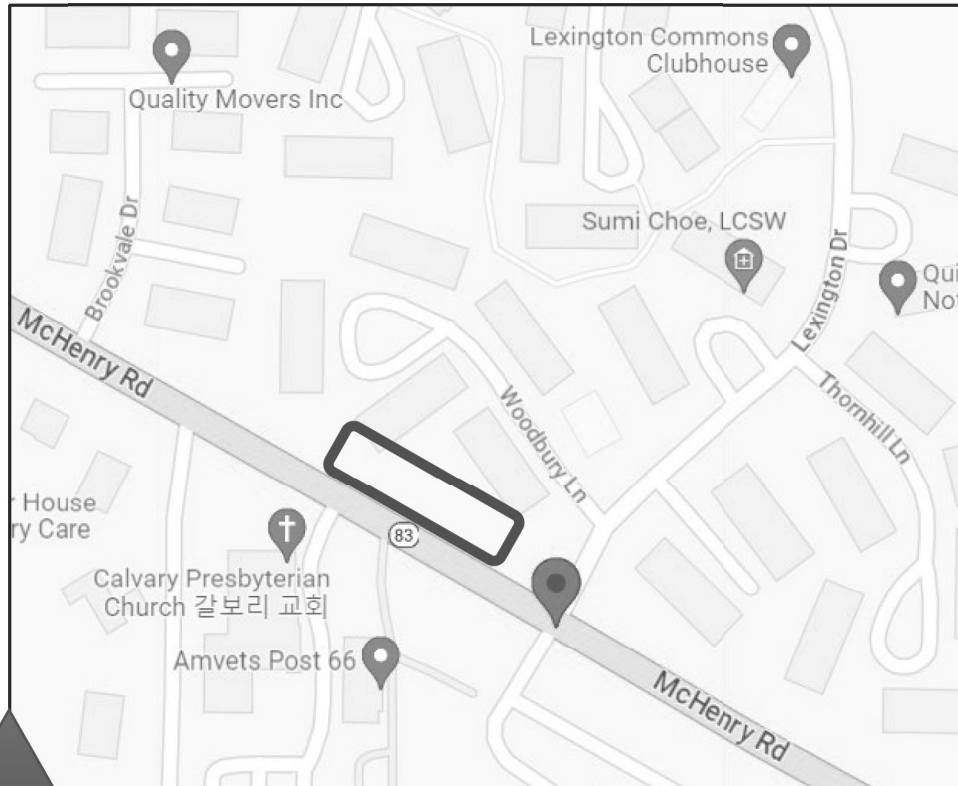
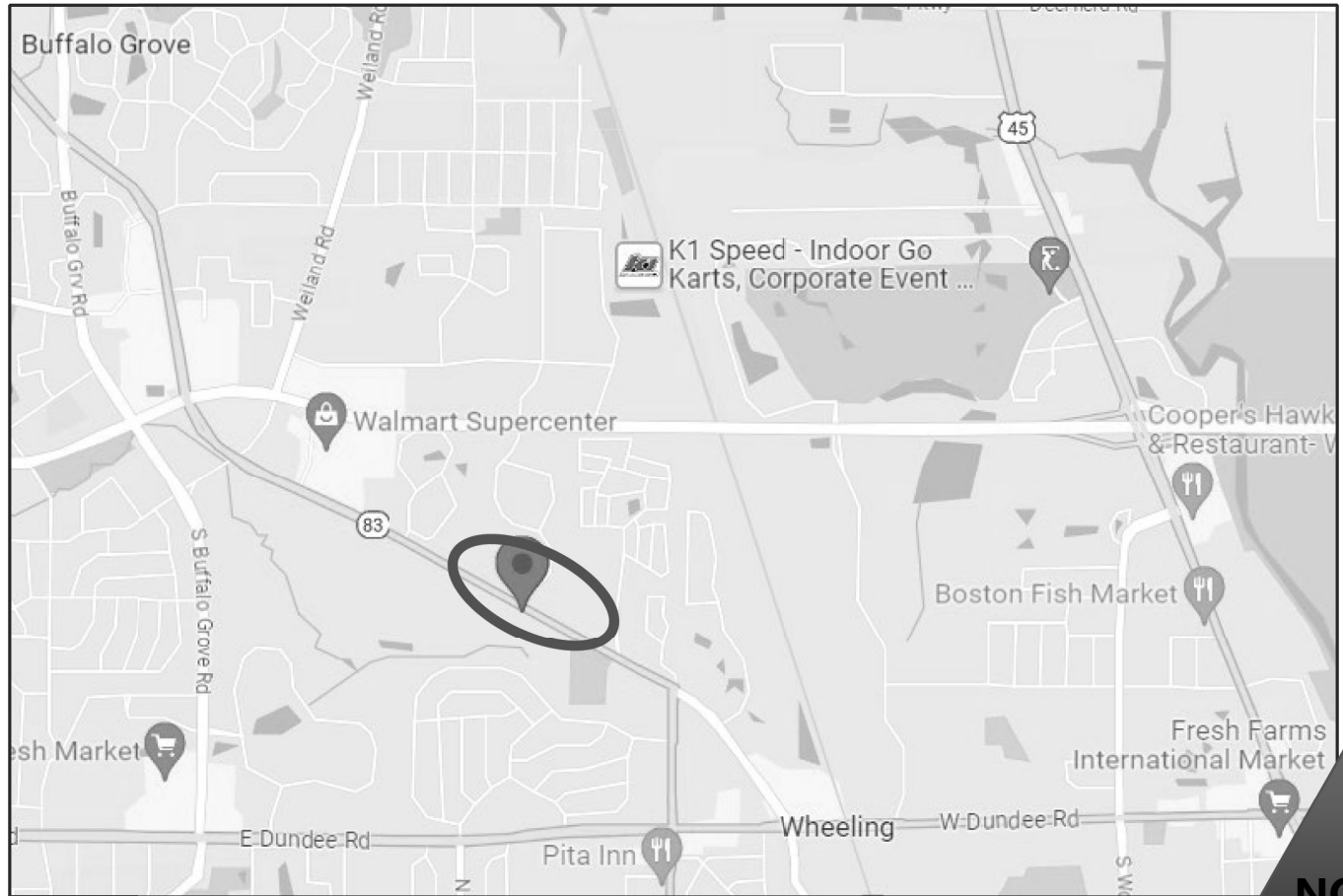
**STATE OF ILLINOIS  
DEPARTMENT OF TRANSPORTATION**

**I-290 E & I-290 W: MANNHEIM ROAD TO RACINE AVE  
LANDSCAPE REPAIR & RESTORATION**

SCALE: SHEET OF SHEETS STA. TO STA.

F.A. RTE.	SECTION	COUNTY	TOTAL SHEETS	SHEET NO.
VAR	2023 VAR LANDSCAPE	VARIOUS	27	22
			CONTRACT NO. 62V15	
ILLINOIS FED. AID PROJECT				





**62V15 – SPRING 2024  
IL 83 N/O LEXINGTON DRIVE  
WHEELING, IL**

**Plant the following at this location:**

- 3 – Tree, Quercus robur x bicolor 'Nadler'  
(Kindred Spirit Hybrid Oak),  
2 " Caliper, Balled and Burlapped

**Contact for layout:**  
Melissa del Rosario  
847.705.4391

MODEL: Default  
 FILE: \\state-illinois-dot-com\p\dot\Documents\DOT Offices\District 1\Projects\62V15\23\CADD\Structures\62V1523-23-11-landscap.dgn

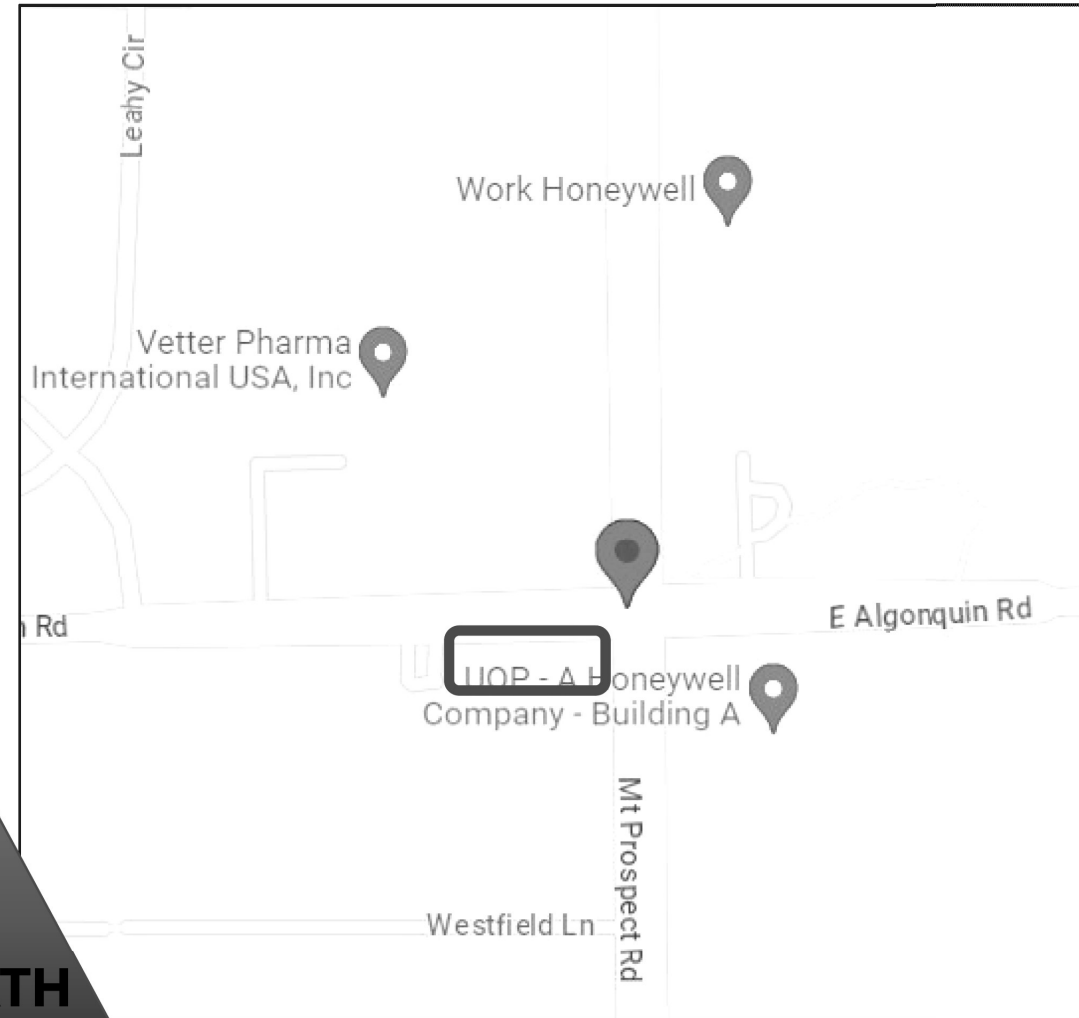
USER NAME = melissa.delrosario	DESIGNED -	REVISED -
	DRAWN -	REVISED -
PLOT SCALE = 100,0823 ' / in.	CHECKED -	REVISED -
PLOT DATE = 10/5/2023	DATE -	REVISED -

**STATE OF ILLINOIS  
DEPARTMENT OF TRANSPORTATION**

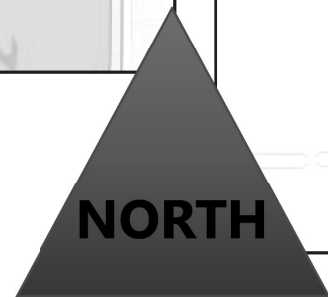
**IL 83 N/O LEXINGTON DRIVE  
LANDSCAPE REPAIR & RESTORATION**

SCALE: SHEET OF SHEETS STA. TO STA.

F.A. RTE.	SECTION	COUNTY	TOTAL SHEETS	SHEET NO.
VAR	2023 VAR LANDSCAPE	VARIOUS	27	23
CONTRACT NO. 62V15				
ILLINOIS FED. AID PROJECT				



**62V15 – SPRING 2024  
MOUNT PROSPECT RD & ALGONQUIN RD  
DES PLAINES, IL**



**Contact for layout:**  
Melissa del Rosario  
847.705.4391

**Plant the following at this location:**

- Seeding, Class 2A – 0.03 acres
- Topsoil Furnish & Place, 2" – 145 sq yds
- Nitrogen Fertilizer Nutrient – 3 pounds
- Phosphorous Fertilizer Nutrient – 3 pounds
- Potassium Fertilizer Nutrient – 3 pounds
- Erosion Control Blanket – 145 sq yds

MODEL: Default  
 FILE NAME: \\w:\illinois-contract\62V15\DOT\Documents\DOT\_Offices\District\_1\Projects\62V15\2023\CADD\BasisStructures\62V152323-sh-h-jandresca.dwg

USER NAME = melissa.del.rosario	DESIGNED -	REVISED -
	DRAWN -	REVISED -
PLOT SCALE = 100.1176' / in.	CHECKED -	REVISED -
PLOT DATE = 7/12/2023	DATE -	REVISED -

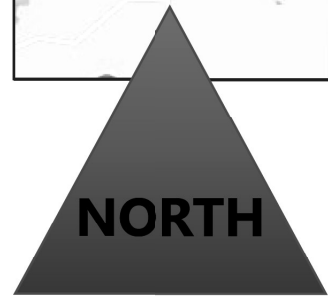
**STATE OF ILLINOIS  
DEPARTMENT OF TRANSPORTATION**

**MOUNT PROSPECT RD & ALGONQUIN RD  
LANDSCAPE REPAIR & RESTORATION**

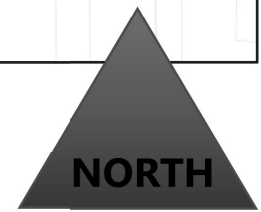
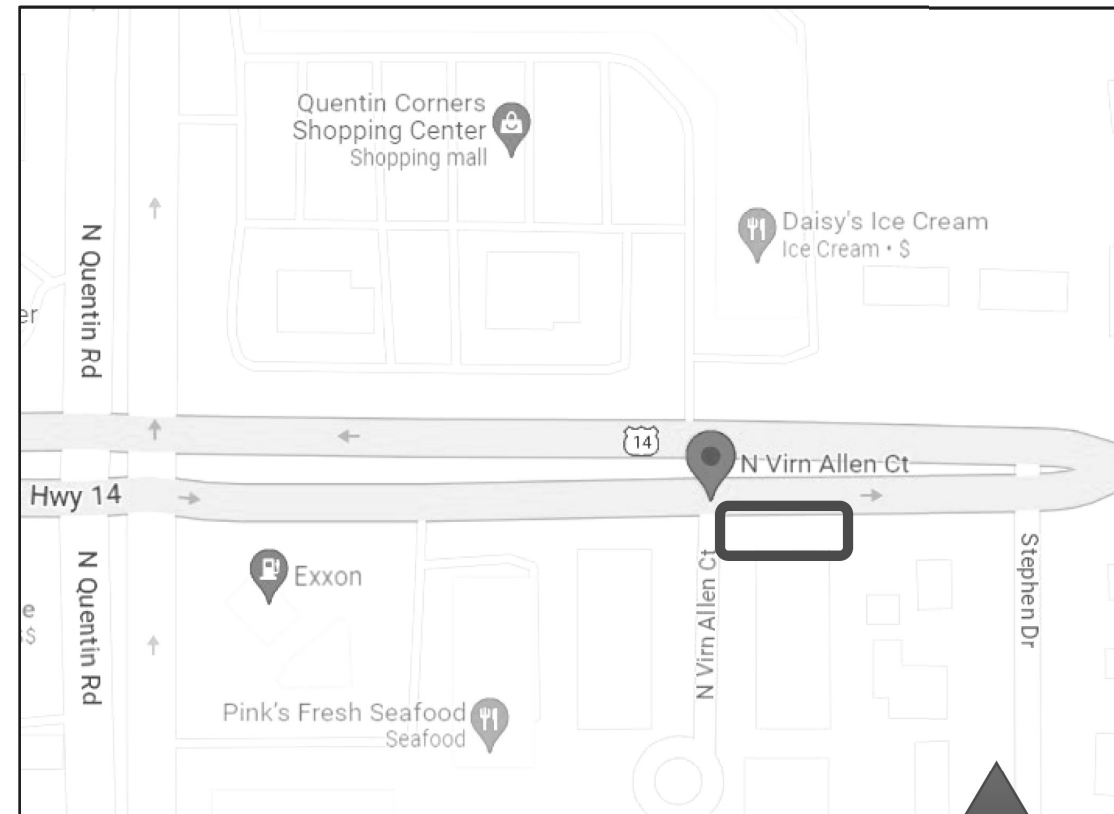
SCALE: SHEET OF SHEETS STA. TO STA.

F.A. RTE.	SECTION	COUNTY	TOTAL SHEETS	SHEET NO.
VAR	2023 VAR LANDSCAPE	VARIOUS	27	24
CONTRACT NO. 62V15				
ILLINOIS FED. AID PROJECT				





**62V15 – SPRING 2024  
N VIRN ALLEN CT & US 14  
PALATINE, IL**



**Plant the following at this location:**

- 6 – Tree, Malus 'JFS KW139MX'  
(Ruby Daze Crabapple),  
2" Caliper, Tree Form, Balled and Burlapped

**Contact for layout:**

Brian Kolasa  
312.826.5997

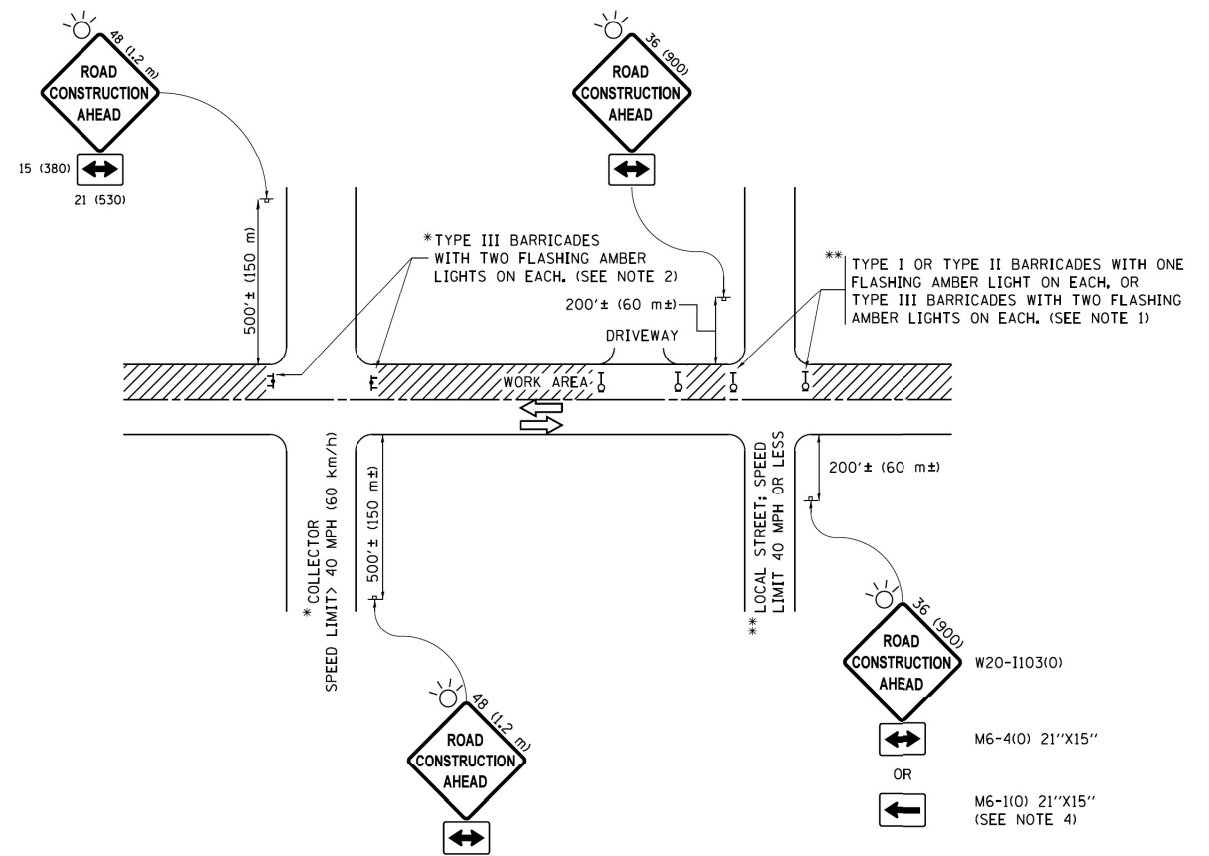
MODEL: Default  
 FILE NAME: I:\work\62v15\62v15.dwg  
 PROJECT: 62V15 - SPRING 2024  
 USER: melissa.delrosario

USER NAME = melissa.delrosario	DESIGNED -	REVISED -
PLOT SCALE = 100.1176' / in.	DRAWN -	REVISED -
PLOT DATE = 7/12/2023	CHECKED -	REVISED -
	DATE -	REVISED -

**STATE OF ILLINOIS  
DEPARTMENT OF TRANSPORTATION**

<b>N VIRN ALLEN CT &amp; US 14 LANDSCAPE REPAIR &amp; RESTORATION</b>			
SCALE:	SHEET	OF SHEETS	STA. TO STA.

F.A. RTE.	SECTION	COUNTY	TOTAL SHEETS	SHEET NO.
VAR	2023 VAR LANDSCAPE	VARIOUS	27	25
CONTRACT NO. 62V15				
ILLINOIS FED. AID PROJECT				



**NOTES:**

1. SIDE ROAD WITH A SPEED LIMIT OF 40 MPH (60 km/h) OR LESS AS SHOWN ON THE DRAWING AND AS DIRECTED BY THE ENGINEER:
  - a) ONE "ROAD CONSTRUCTION AHEAD" SIGN 36 x 36 (900x900) WITH A FLASHER MOUNTED ON IT APPROXIMATELY 200' (60 m) IN ADVANCE OF THE MAIN ROUTE.
  - b) THE CLOSED PORTION OF THE MAIN ROUTE SHALL BE PROTECTED BY BLOCKING WITH TYPE I, TYPE II OR TYPE III BARRICADES, 1/3 OF THE CROSS SECTION OF THE CLOSED PORTION.
2. SIDE ROAD WITH A SPEED LIMIT GREATER THAN 40 MPH (60 km/h) AS SHOWN ON THE DRAWING AND AS DIRECTED BY THE ENGINEER:
  - a) ONE "ROAD CONSTRUCTION AHEAD" SIGN 48 x 48 (1.2 m x 1.2 m) WITH A FLASHER MOUNTED ON IT APPROXIMATELY 500' (150 m) IN ADVANCE OF THE MAIN ROUTE.
  - b) THE CLOSED PORTION OF THE MAIN ROUTE SHALL BE PROTECTED BY BLOCKING WITH TYPE III BARRICADES, 1/2 OF THE CROSS SECTION OF THE CLOSED PORTION.
3. CONES MAY BE SUBSTITUTED FOR BARRICADES OR DRUMS AT HALF THE SPACING DURING DAY OPERATIONS. CONES SHALL BE A MINIMUM OF 28 (710) IN HEIGHT.
4. WHEN THE SIDE ROAD LIES BETWEEN THE BEGINNING OF THE MAINLINE SIGNING AND THE WORK ZONE, A SINGLE HEADED ARROW (M6-1) SHALL BE USED IN LIEU OF THE DOUBLE HEADED ARROW (M6-4).
5. WHEN WORK IS BEING PERFORMED ON A SIDE ROAD OR DRIVEWAY, FOLLOW THE APPLICABLE STANDARD(S). THE DIRECTIONAL ARROW (M6-1 OR M6-4) SHALL BE COVERED OR REMOVED WHEN NO LONGER CONSISTENT WITH THE TRAFFIC CONTROL SET-UP.
6. ADVANCE WARNING SIGNS ARE TO BE OMITTED ON DRIVEWAYS UNLESS OTHERWISE SPECIFIED IN THE PLANS OR BY THE ENGINEER.
7. THE TRAFFIC CONTROL AND PROTECTION FOR SIDE ROADS, INTERSECTIONS, AND DRIVEWAYS SHALL BE INCLUDED IN THE COST OF SPECIFIED TRAFFIC CONTROL STANDARDS OR ITEMS.

All dimensions are in inches (millimeters) unless otherwise shown.

MODEL: Default  
 FILE NAME: \\s:\idbc\w\_bentley.com\p\DOT\Documents\DOT Offices\District 1\Projects\ID115323\CADD\Drawings\ID115323-014-lands.dgn

USER NAME = melissa.delrosario	DESIGNED -	REVISED -
	DRAWN -	REVISED -
PLOT SCALE = 99.9912 ' / in.	CHECKED -	REVISED -
PLOT DATE = 7/12/2023	DATE -	REVISED -

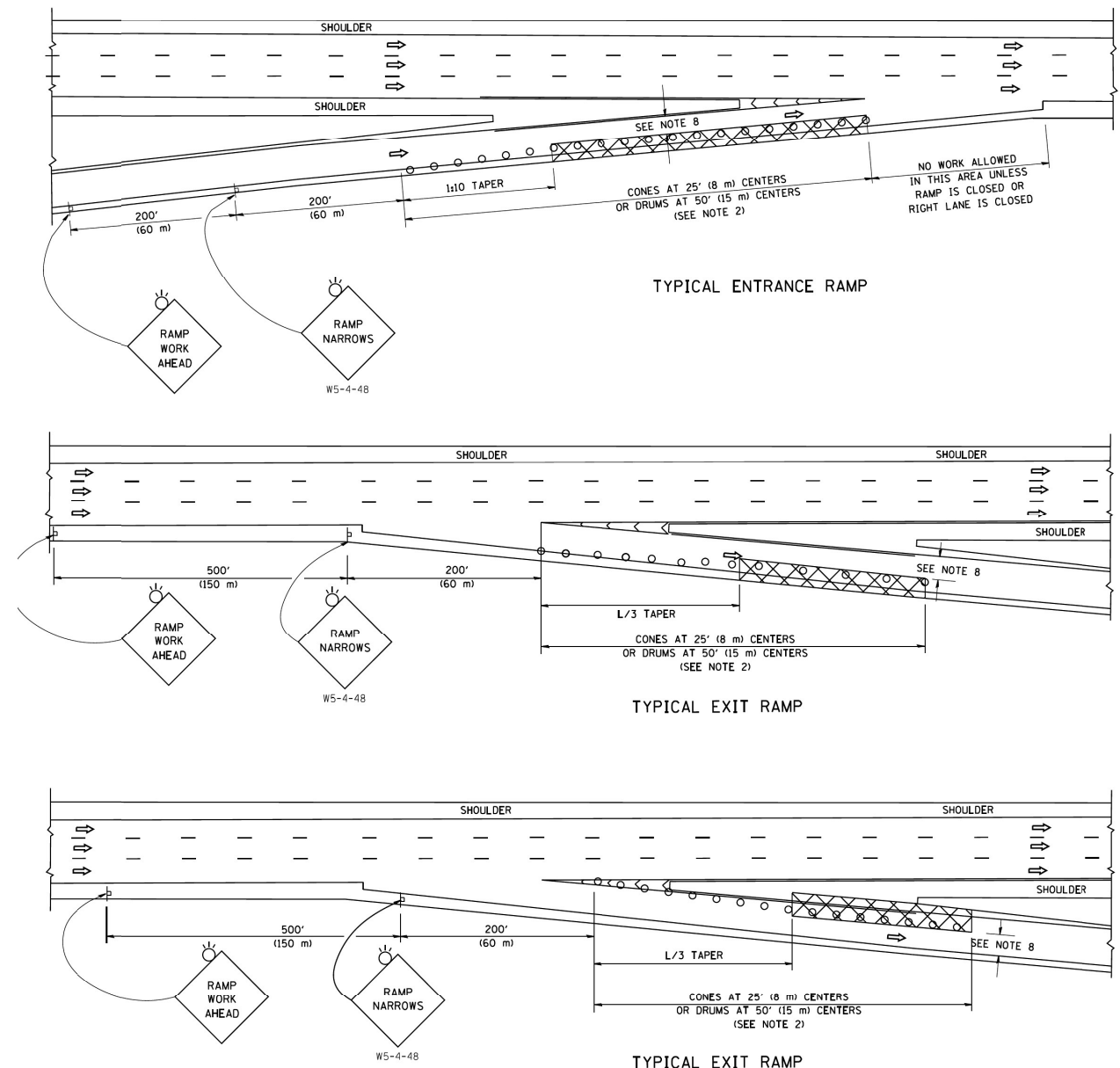
**STATE OF ILLINOIS  
DEPARTMENT OF TRANSPORTATION**

**TRAFFIC CONTROL AND PROTECTION FOR SIDE  
ROADS, INTERSECTIONS, AND DRIVEWAYS (TC-10)**

F.A. * RTE.	SECTION	COUNTY	TOTAL SHEETS	SHEET NO.
VAR	2023 VAR LANDSCAPE	VARIOUS	27	26
CONTRACT NO. 62V15				
ILLINOIS FED. AID PROJECT				

SCALE: SHEET OF SHEETS STA. TO STA.

PARTIAL RAMP CLOSURE DETAILS



SYMBOLS

- ACTIVE WORK AREA
- SIGN ON PORTABLE OR PERMANENT SUPPORT
- FLAGGER WITH CONTROL SIGN
- TYPE II BARRICADE OR DRUM
- CONE, DRUM OR BARRICADE
- IMPACT ATTENUATOR OF TYPE AND TEST LEVEL SPECIFIED

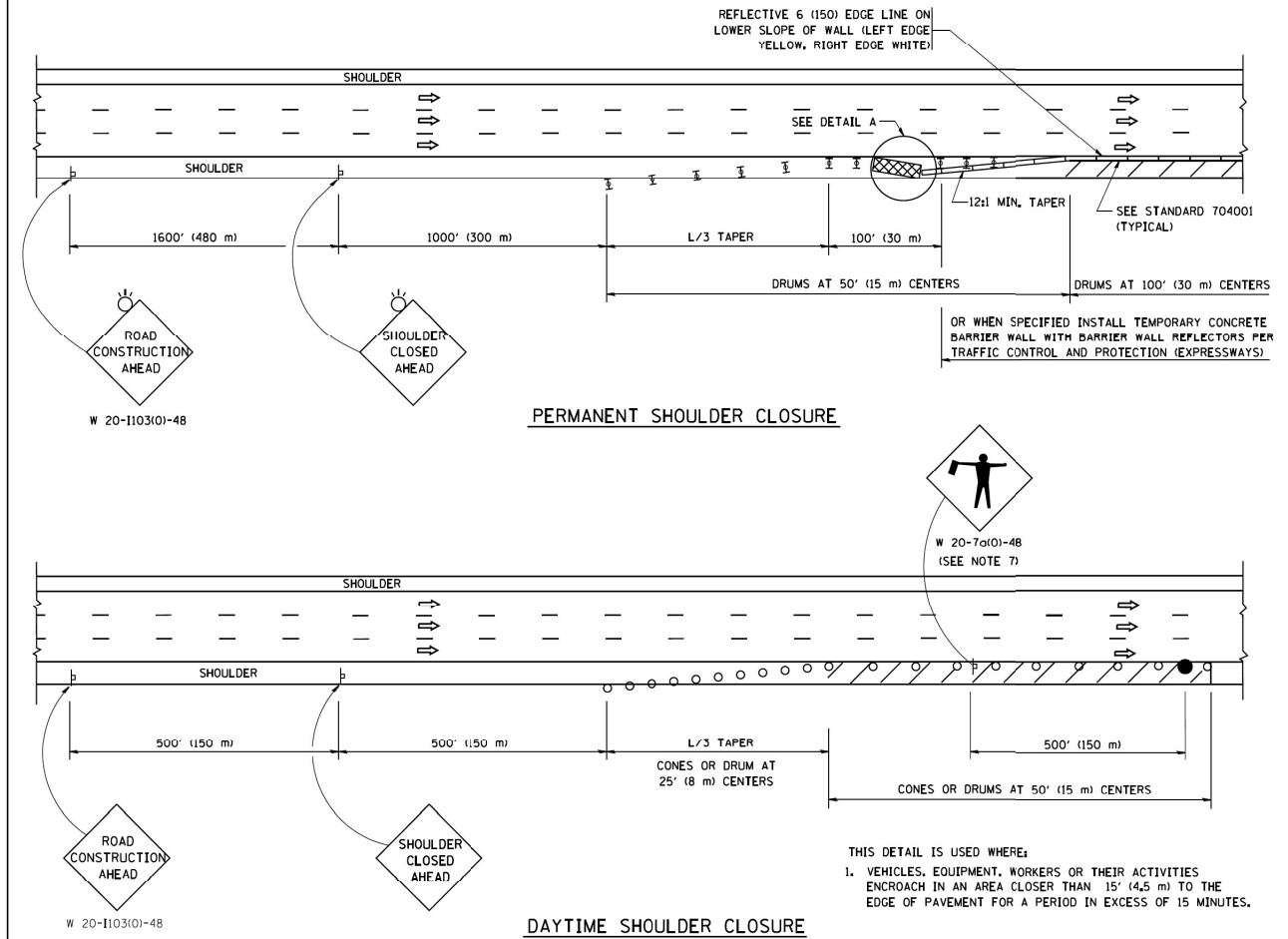
GENERAL NOTES

1. THE "L" DISTANCE EQUALS:  

SPEED LIMIT	METRIC	ENGLISH
45 mph (80 km/h) OR GREATER	$L=0.65(W)(S)$	$L=(W)(S)$

W = WIDTH OF OFFSET IN FEET (METERS)  
 S = NORMAL POSTED SPEED MPH (KM/H)
2. TYPE II BARRICADES OR DRUMS ARE REQUIRED FOR ALL NIGHTTIME CLOSURES. TYPE II BARRICADES OR DRUMS WITH MONODIRECTIONAL STEADY BURN LIGHTS ARE REQUIRED FOR DELINEATING OBSTACLES, EXCAVATIONS, OR HAZARDS EXCEEDING 100 FT (30m) IN LENGTH AT NIGHT.
3. ALL SIGNS SHALL BE POST MOUNTED IF THE CLOSURE TIME EXCEEDS FOUR DAYS.
4. FLASHING LIGHTS SHALL BE USED DURING THE HOURS OF DARKNESS AND SHALL BE INSTALLED ABOVE THE FIRST TWO SETS OF SIGNS.

SHOULDER CLOSURE DETAILS



ARRAY DESIGN PER MANUFACTURER TO BE NCHRP 350/MASH COMPLIANT.

DETAIL "A"  
 IMPACT ATTENUATOR, TEMPORARY  
 (SEE NOTE 5)

5. THE IMPACT ATTENUATOR, TEMPORARY IS NOT REQUIRED WHEN THE TEMPORARY CONCRETE BARRIER WALL IS PROTECTED BY OR IS TIED INTO THE EXISTING GUARDRAIL. IF OFFSET IS LESS THAN 5 FEET USE NARROW USE TYPE DEVICE TO MEET NCHRP350/MASH.
6. AUTHORIZATION FROM THE DISTRICT'S BUREAU OF TRAFFIC IS REQUIRED FOR ALL FREEWAY CLOSURES.
7. THE FLAGGER AND FLAGGER SIGN ARE REQUIRED AT THE ABOVE WORK SITES WHEN:
  - a. FOUR OR MORE WORK VEHICLES ENTER THE TRAFFIC LANES IN A ONE HOUR PERIOD.
  - b. THE WORK ACTIVITY REQUIRES FREQUENT ENCR OACHMENT INTO THE LANE OPEN TO TRAFFIC.
 THE FLAGGER SHALL BE STATIONED APPROXIMATELY 100' (30 m) TO 200' (60 m) IN ADVANCE OF THE WORKERS.
8. 12' MIN. WIDTH TANGENT SECTION  
 16' MIN. WIDTH CURVE SECTION.

ALL DIMENSIONS ARE IN INCHES (MILLIMETERS) UNLESS OTHERWISE SHOWN.

MODEL: P:\m\p\... FILE NAME: ...

USER NAME = melissa.delrosario	DESIGNED -	REVISED -
PLOT SCALE = 100,1807' / in.	DRAWN -	REVISED -
PLOT DATE = 7/12/2023	CHECKED -	REVISED -
	DATE -	REVISED -

STATE OF ILLINOIS  
 DEPARTMENT OF TRANSPORTATION

TRAFFIC CONTROL DETAIL FOR FREEWAY SHOULDER  
 CLOSURES AND PARTIAL RAMP CLOSURE (TC-17)

SCALE: SHEET OF SHEETS STA. TO STA.

F.A. RTE.	SECTION	COUNTY	TOTAL SHEETS	SHEET NO.
VAR	2023 VAR LANDSCAPE	VARIOUS	27	27
CONTRACT NO. 62V15				
ILLINOIS FED. AID PROJECT				