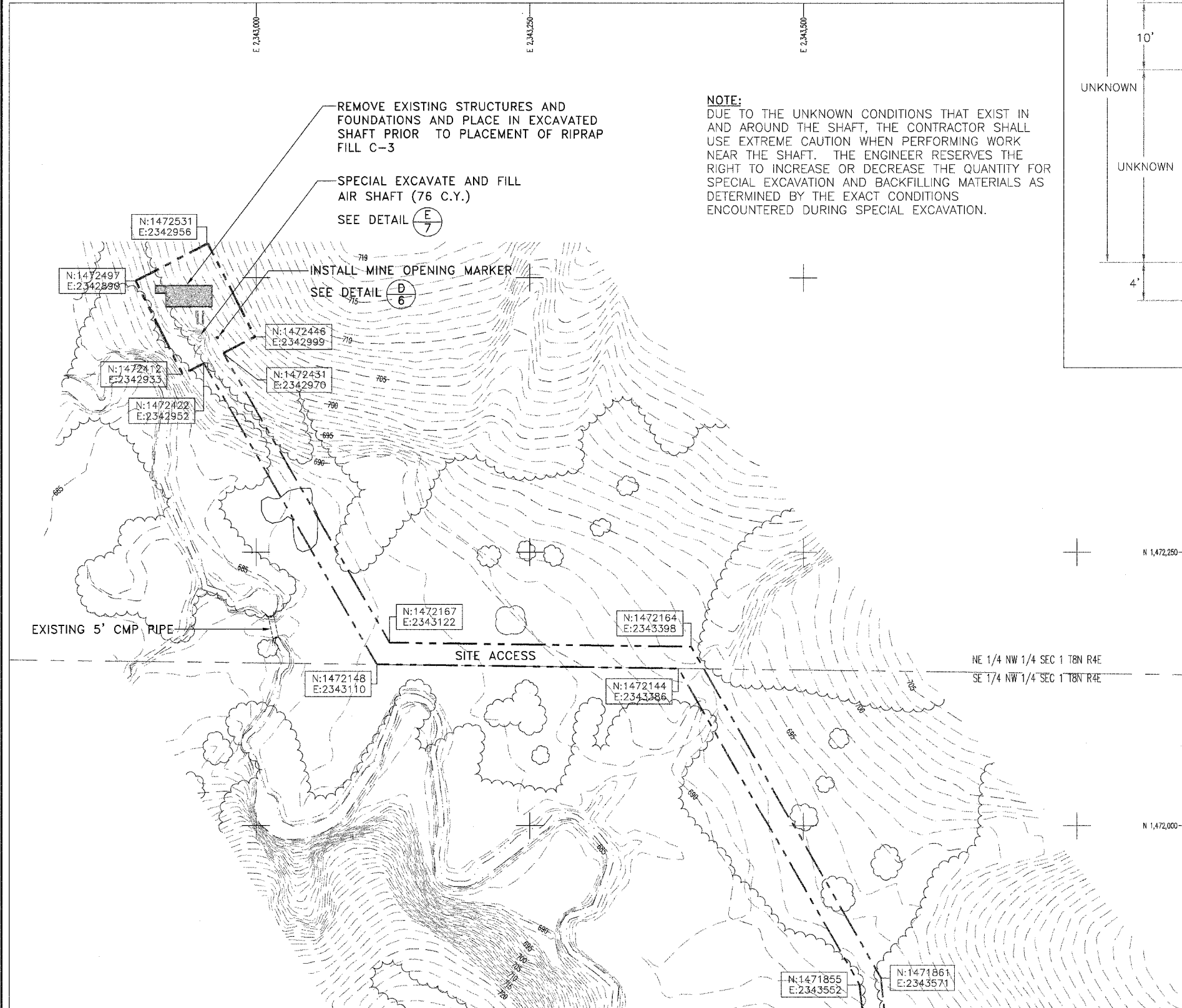


Westerby Brothers No. 2



- 680--- EXISTING CONTOUR
 - --- CONSTRUCTION/SEEDING LIMITS
 - --- EDGE OF ROAD
 - --- OHP --- OVERHEAD POWER
 - --- TREELINE
 - --- EDGE OF WATER
 - △ SURVEY CONTROL POINT
- Legend

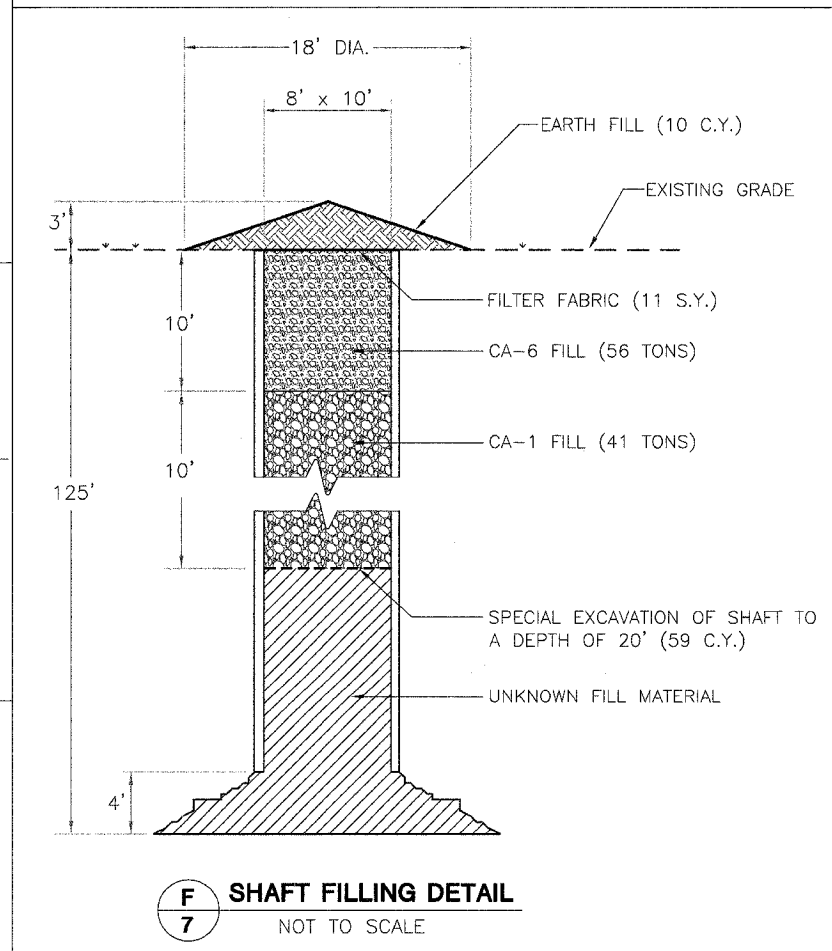
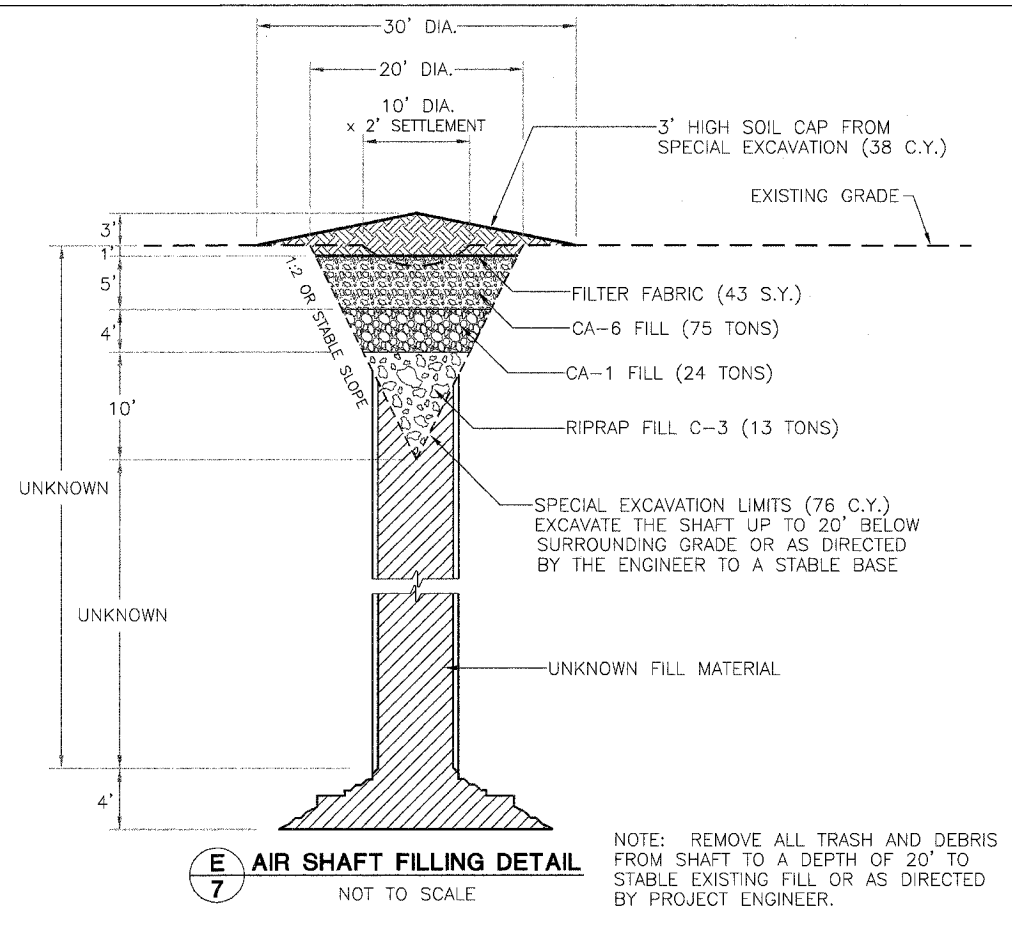


REMOVE EXISTING STRUCTURES AND FOUNDATIONS AND PLACE IN EXCAVATED SHAFT PRIOR TO PLACEMENT OF RIPRAP FILL C-3

SPECIAL EXCAVATE AND FILL AIR SHAFT (76 C.Y.)
SEE DETAIL (E/7)

INSTALL MINE OPENING MARKER
SEE DETAIL (D/6)

NOTE:
DUE TO THE UNKNOWN CONDITIONS THAT EXIST IN AND AROUND THE SHAFT, THE CONTRACTOR SHALL USE EXTREME CAUTION WHEN PERFORMING WORK NEAR THE SHAFT. THE ENGINEER RESERVES THE RIGHT TO INCREASE OR DECREASE THE QUANTITY FOR SPECIAL EXCAVATION AND BACKFILLING MATERIALS AS DETERMINED BY THE EXACT CONDITIONS ENCOUNTERED DURING SPECIAL EXCAVATION.



State of Illinois
Department of Natural Resources

Silver Creek Collieries 'Group'
Reclamation Project
AML-GFuE-0503
Fulton/Knox county

Drawn By: M-LF
Checked By:
Date: 10/16/2005

Existing & Proposed
Conditions
Sheet
7 of 12