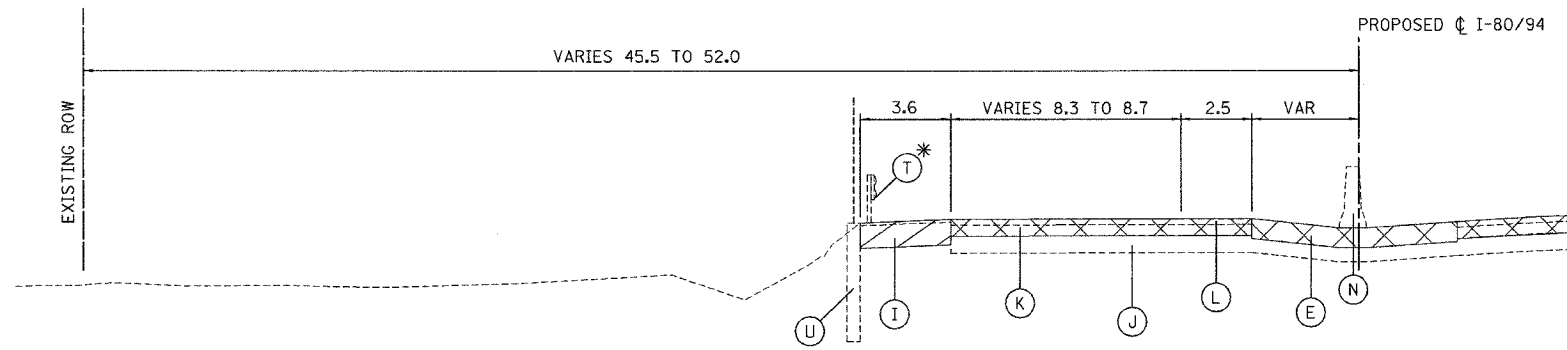


F.A.I. RTE.	SECTION	COUNTY	TOTAL SHEETS	SHEET NO.
80/94	2626.2-R-2	COOK/LAKE	1207	18
STA.		TO STA.		
FED. ROAD DIST. NO.		ILLINOIS FED. AID PROJECT		
CONTRACT NO. 62114		INDOT DES. NO. 0100987		

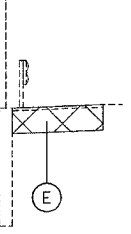
ALL DIMENSIONS IN METERS EXCEPT PAY ITEMS AND UNLESS NOTED OTHERWISE



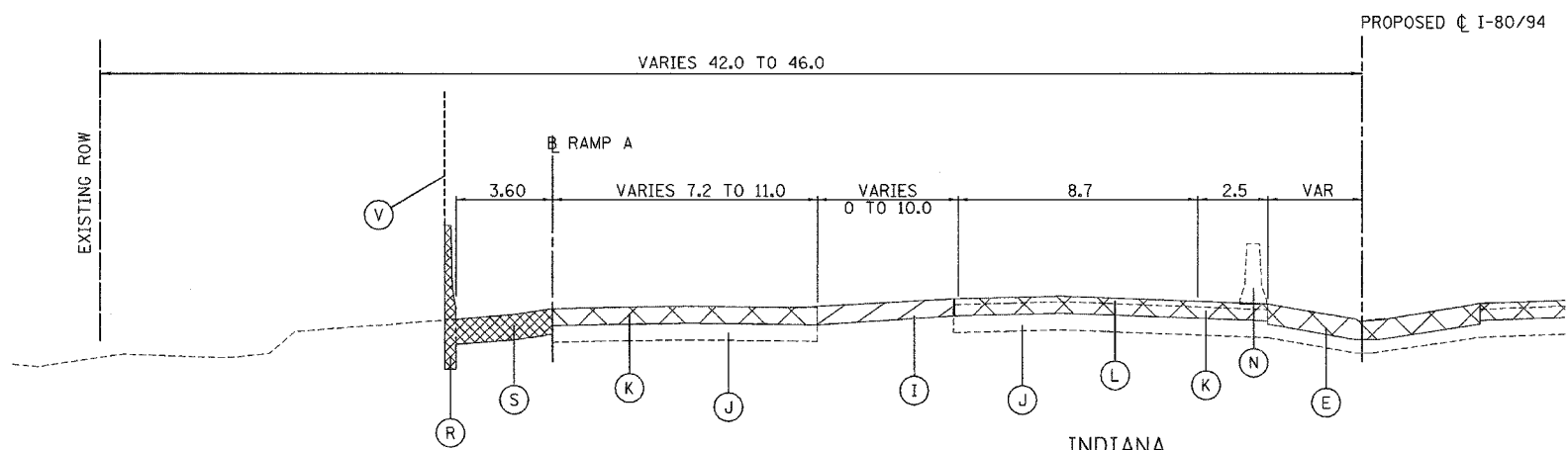
INDIANA
EXISTING TYPICAL SECTION - I-80/94

*BEGINS AT STA. 8+043

STA. 7+990 TO STA. 8+927

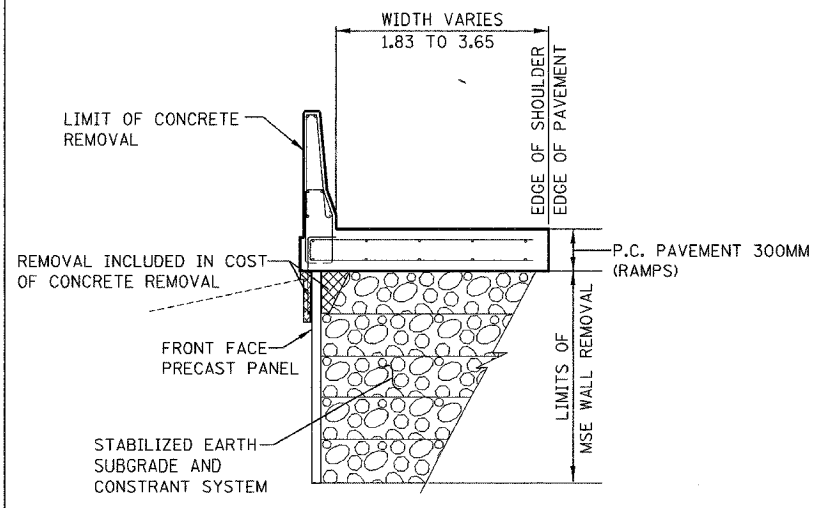


STA. 8+595 TO STA. 8+727

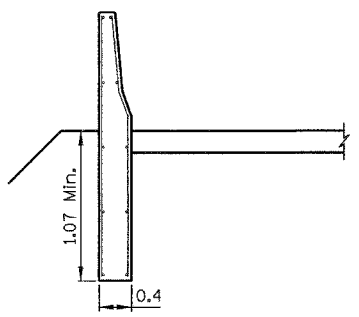


INDIANA
EXISTING TYPICAL SECTION - I-80/94

STA. 8+927 TO STA. 9+102



EXISTING REINFORCED CONCRETE SHOULDER
WB STA. 8+927.0 TO STA. 9+109.9 (WITH NOISE ABATEMENT WALL)
EB STA. 9+052.7 TO STA. 9+169.3 (CONCRETE REMOVAL)
EB MSE WALL REMOVAL AS NEEDED FOR STORM SEWER INSTALLATION



EXISTING SPECIAL CONCRETE BARRIER
EB STA. 9+169.3 TO STA. 9+210.9
REMOVAL PAID AS CONCRETE REMOVAL

EXISTING LEGEND (ILLINOIS & INDIANA)

- (A) STEEL SHEET PILING REMOVAL
- (B) CONCRETE BARRIER REMOVAL
- (C) PORTLAND CEMENT CONCRETE SHOULDERS - 360MM
- (D) CONTINUOUSLY REINFORCED PORTLAND CEMENT CONCRETE PAVEMENT 360MM
- (E) BITUMINOUS PAVEMENT 360MM, TEMPORARY
- (F) SUB-BASE GRANULAR MATERIAL
- (G) STABILIZED SUB-BASE 150MM
- (H) CONCRETE BARRIER
- (I) BITUMINOUS SHOULDERS (SEE TABLE)
- (J) AGGREGATE SUBGRADE (300MM & VAR)
- (K) PORTLAND CEMENT CONCRETE PAVEMENT (275MM & VAR)
- (L) BITUMINOUS OVERLAY (115MM & VAR)
- (M) BITUMINOUS SHOULDER PAVEMENT (250MM & VAR)
- (N) TEMPORARY CONCRETE BARRIER
- (O) CONTROLLED LOW STRENGTH MATERIAL
- (P) PAVEMENT UNDERDRAIN
- (R) RETAINING WALL BUILT BY OTHERS
- (S) REINFORCED CONCRETE SHOULDERS
- (T) SINGLE PLATE BEAM GUARDRAIL
- (U) NOISE ABATEMENT WALL GROUND MOUNT
- (V) NOISE ABATEMENT WALL STRUCTURE MOUNT

- PAVEMENT REMOVAL
- PAVED SHOULDER REMOVAL
- CONCRETE REMOVAL
- PAVEMENT BREAKING

SHOULDER THICKNESS TABLE

TYPE	OFFSET	STATIONS	ESTIMATED THICKNESS
BITUMINOUS	LEFT	7+990 TO 8+580	400 mm

NOTE: THE TABLE PRESENTS THICKNESS OF ORIGINAL I-80/94 SHOULDERS REMAINING TO BE REMOVED IN PHASE III (2006). OTHER SHOULDERS REMOVED AND REPLACED WITH TEMPORARY PAVEMENT IN PREVIOUS PHASES ARE LABEL E.

BRIDGE OMISSIONS:
HOHMAN 8+191 TO 8+256
LIT. CAL. 8+405 TO 8+595
HARRISON 8+727 TO 8+776

ILLINOIS DEPARTMENT OF TRANSPORTATION
I-80/94/US 6
KINGERY-BORMAN EXPRESSWAY
BURNHAM ROAD TO US 41
EXISTING TYPICAL SECTIONS
STA. 7+990 TO STA. 9+102
WESTBOUND I-80/94/US 6

SCALE NTS
DATE 07/05

DRAWN BY ACE/CAD
CHECKED BY TAE

AMERICAN
CONSULTING ENGINEERS

REVISIONS	
NAME	DATE