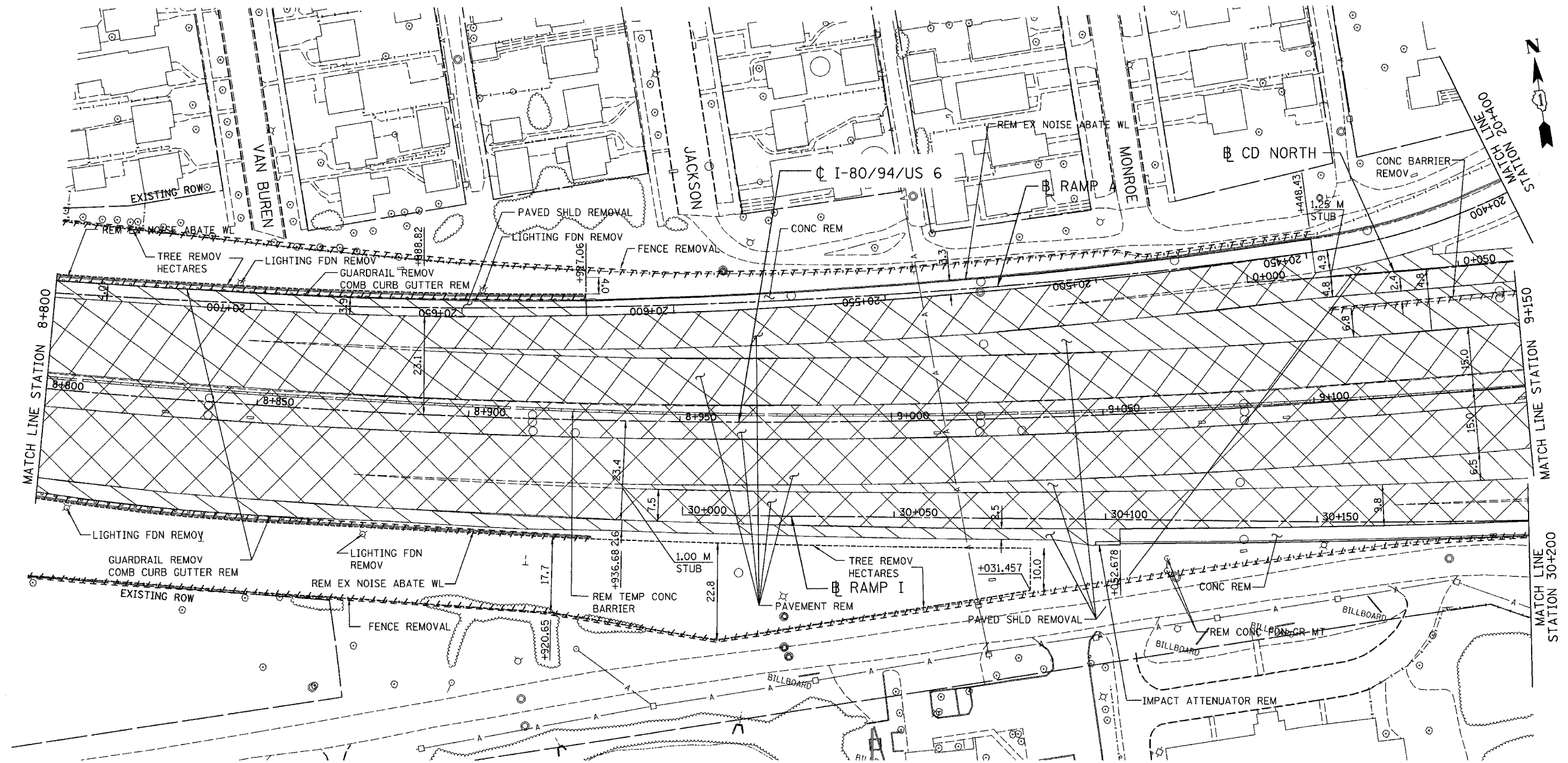


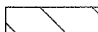
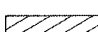


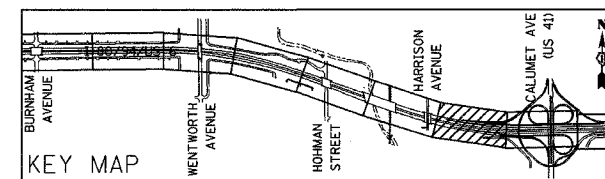
ALL DIMENSIONS IN METERS EXCEPT PAY ITEMS AND UNLESS NOTED OTHERWISE

F.A.I. RTE.	SECTION	COUNTY	TOTAL SHEETS	SHEET NO.
80/94	2626.2-R-2	COOK/LAKE	1207	60
STA.	TO STA.			
FED. ROAD DIST. NO.	ILLINOIS FED. AID PROJECT			
CONTRACT NO. 62114	INDOT DES. NO. 0100987			



EXISTING LEGEND:

-  LIGHT POLE REMOVAL (BY CONTRACT 62664)
-  PAVEMENT REMOVAL
-  PAVED SHOULDER REMOVAL
-  APPROACH SLAB REMOVAL



REVISIONS	
NAME	DATE

ILLINOIS DEPARTMENT OF TRANSPORTATION
 I-80/94/US 6
 KINGERY-BORMAN EXPRESSWAY
 BURNHAM ROAD TO US 41
EXISTING PLAN
 STA. 8+800 TO STA. 9+150
 SCALE 1:500 DRAWN BY ACE/CAD
 DATE 07/05 CHECKED BY TAE

