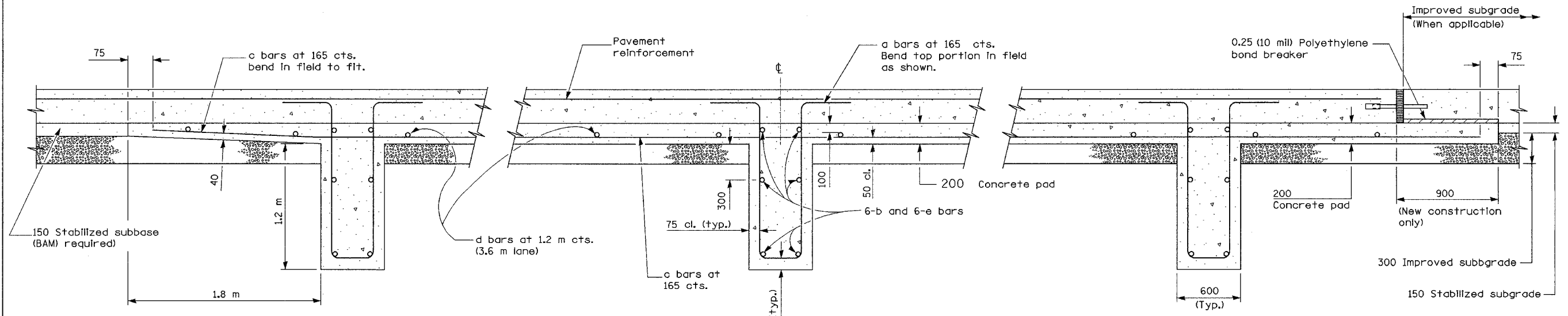


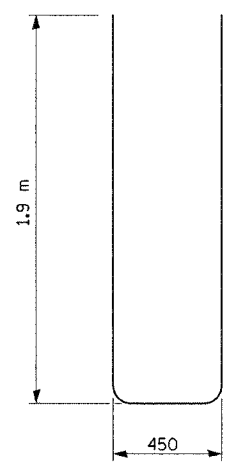
F.A.I. RTE.	SECTION	COUNTY	TOTAL SHEETS	SHEET NO.
80/94	2626.2-R-2	COOK/LAKE	1207	101
STA.		TO STA.		
FED. ROAD DIST. NO.	ILLINOIS FED. AID PROJECT			
CONTRACT NO. 62114	INDOT DES. NO. 0100987			



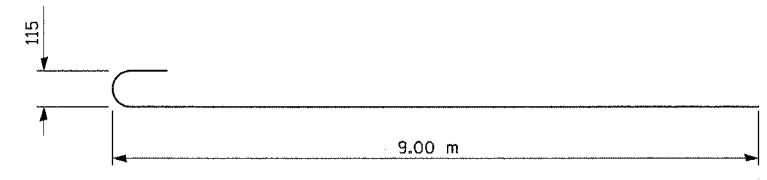
SECTION AT LUG W

SECTION AT LUG X

SECTION AT LUG Y



BAR a



BAR b

GENERAL NOTES

(See Detail for "Bar Reinforcement for 4.2 m CRC Pavement Reinforcement" for 4.2 m lane.
 See Standard 421001 for details of pavement reinforcement for 3.6 m lane.
 See Standards 420001 and 420401 for joint details not shown.
 All dimensions are in millimeters unless otherwise shown.

MATERIALS REQUIRED FOR (1) ONE LUG SYSTEM				
(Excluding Pavement Concrete and Pavement Reinforcement)				
Bar	No.	Size	Length	Shape
a	264	No. 25	4.25	U
b	18	No. 15	9.19	—
c	264	No. 15	6.10	—
d	56	No. 13	3.52	—
e	18	No. 15	6.05	—
Concrete, m3			31.2	
Reinforcing Bars, kg			7672	
Concrete Pad, m2			208	
Improved Subgrade, m2			234	

All reinforcement shall be epoxy coated.

REVISIONS	
NAME	DATE

ILLINOIS DEPARTMENT OF TRANSPORTATION
 I-80/94/US 6
 KINGERY-BORMAN EXPRESSWAY
 BURNHAM ROAD TO US 41
**14.4 M CRC PAVEMENT
 (WITH LUG SYSTEM)**
 SCALE NONE DRAWN BY ACE/CAD
 DATE 07/05 CHECKED BY TAE