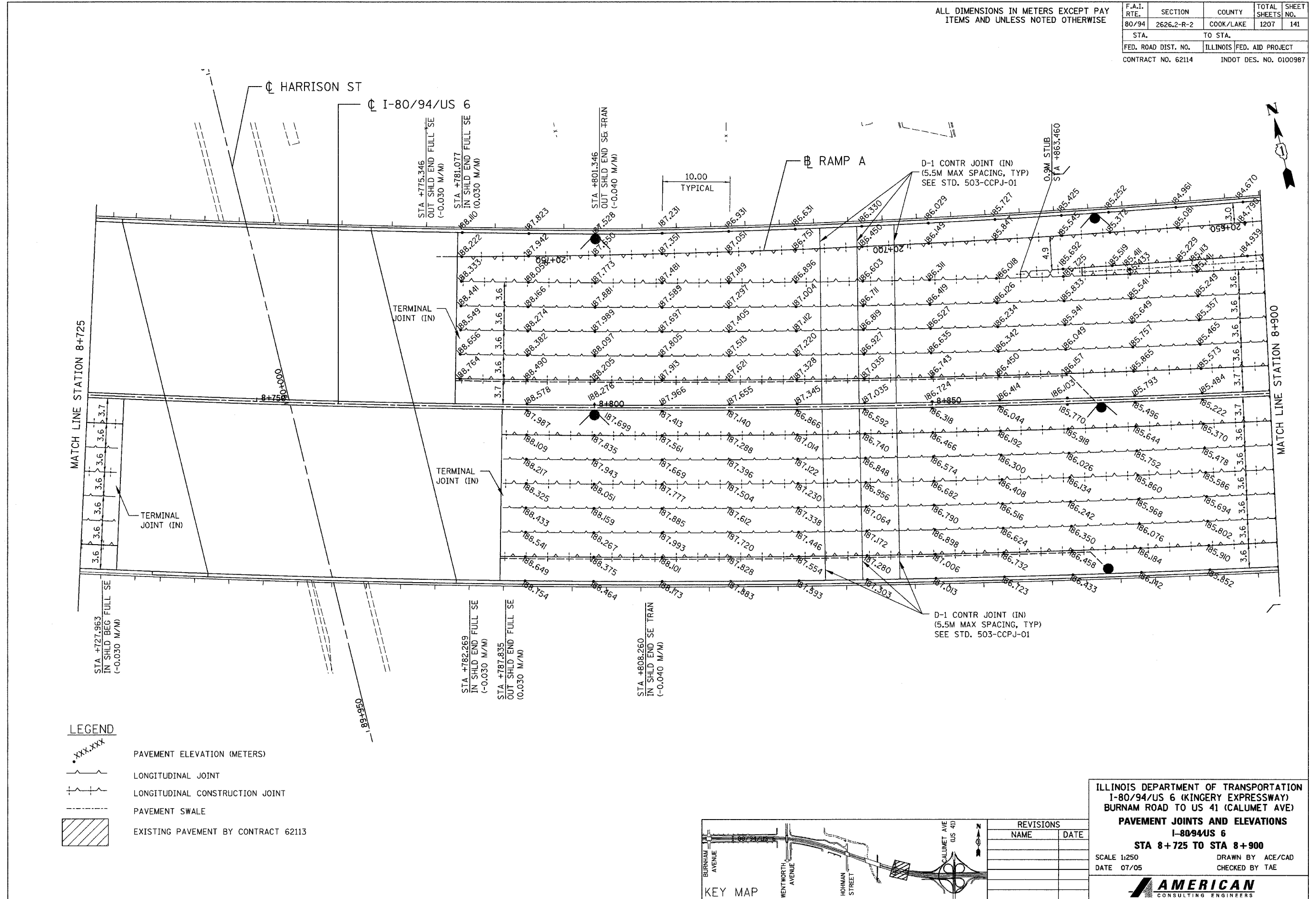


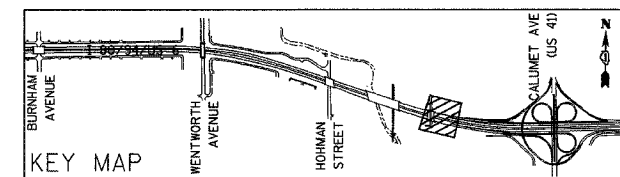
ALL DIMENSIONS IN METERS EXCEPT PAY ITEMS AND UNLESS NOTED OTHERWISE

F.A.I. RTE. 80/94	SECTION 2626.2-R-2	COUNTY COOK/LAKE	TOTAL SHEETS 1207	SHEET NO. 141
STA. 8+725		TO STA. 8+900		
FED. ROAD DIST. NO.		ILLINOIS	FED. AID PROJECT	
CONTRACT NO. 62114		INDOT DES. NO. 0100987		



LEGEND

•XXX.XXX	PAVEMENT ELEVATION (METERS)
~	LONGITUDINAL JOINT
+	LONGITUDINAL CONSTRUCTION JOINT
- - -	PAVEMENT SWALE
▨	EXISTING PAVEMENT BY CONTRACT 62113



REVISIONS	
NAME	DATE

ILLINOIS DEPARTMENT OF TRANSPORTATION
 I-80/94/US 6 (KINGERY EXPRESSWAY)
 BURNHAM ROAD TO US 41 (CALUMET AVE)
PAVEMENT JOINTS AND ELEVATIONS
 I-8094/US 6
STA 8+725 TO STA 8+900
 SCALE 1:250 DRAWN BY ACE/CAD
 DATE 07/05 CHECKED BY TAE

AMERICAN
 CONSULTING ENGINEERS