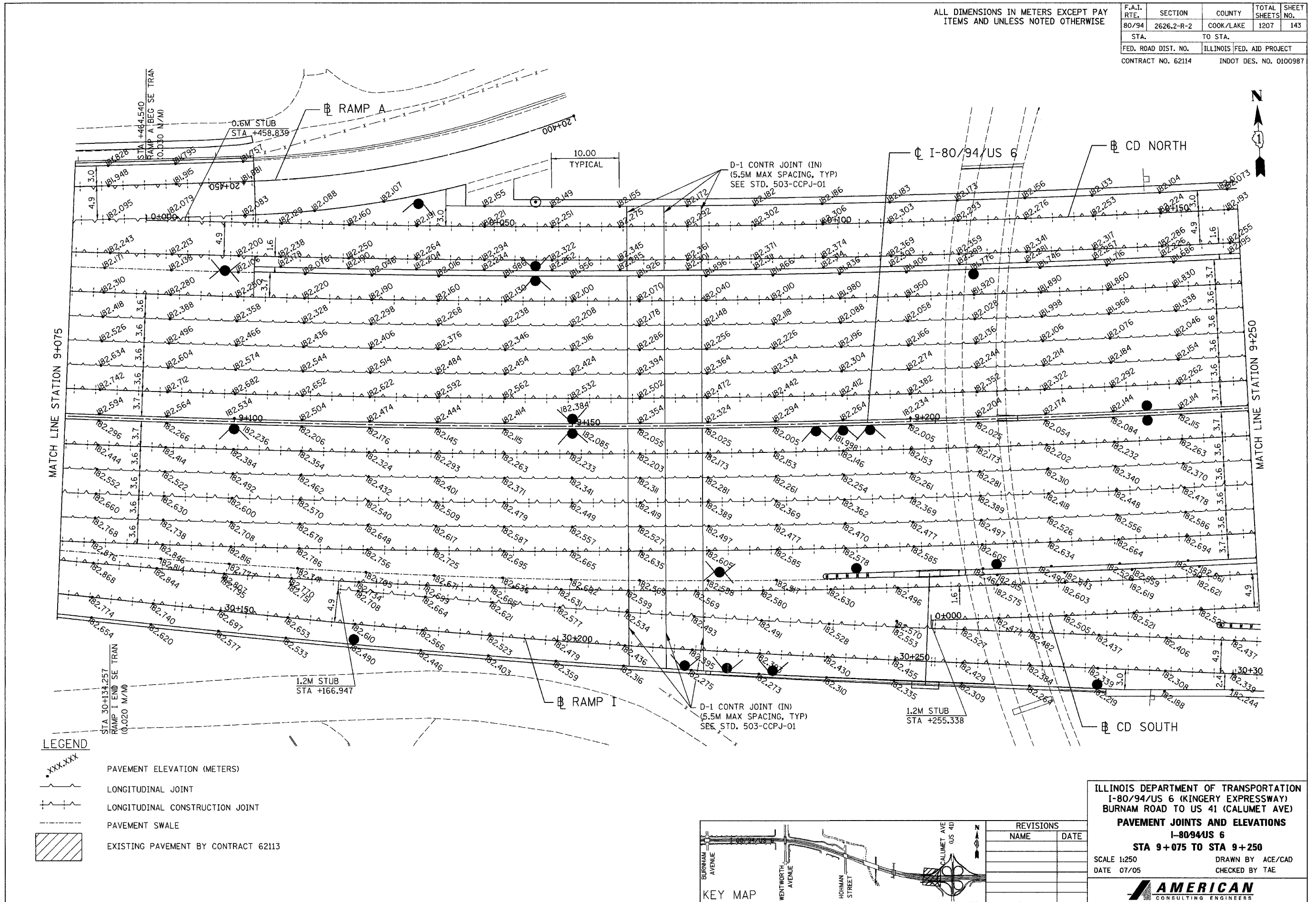


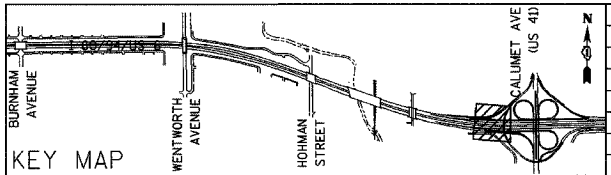
ALL DIMENSIONS IN METERS EXCEPT PAY ITEMS AND UNLESS NOTED OTHERWISE

| | | | | |
|----------------------|-----------------------|---------------------------|----------------------|------------------|
| F.A.I. RTE. 80/94 | SECTION 2626.2-R-2 | COUNTY COOK/LAKE | TOTAL SHEETS 1207 | SHEET NO. 143 |
| STA. TO STA. | | ILLINOIS FED. AID PROJECT | | |
| CONTRACT NO. 62114 | | INDOT DES. NO. 0100987 | | |



LEGEND

| | |
|-----------|-------------------------------------|
| • XXX.XXX | PAVEMENT ELEVATION (METERS) |
| — — — | LONGITUDINAL JOINT |
| - - - | LONGITUDINAL CONSTRUCTION JOINT |
| ----- | PAVEMENT SWALE |
| | EXISTING PAVEMENT BY CONTRACT 62113 |



| REVISIONS | |
|-----------|------|
| NAME | DATE |
| | |
| | |
| | |
| | |

ILLINOIS DEPARTMENT OF TRANSPORTATION
I-80/94/US 6 (KINGERY EXPRESSWAY)
BURNHAM ROAD TO US 41 (CALUMET AVE)
PAVEMENT JOINTS AND ELEVATIONS
I-8094US 6
STA 9+075 TO STA 9+250
 SCALE 1:250
 DATE 07/05

DRAWN BY ACE/CAD
 CHECKED BY TAE