
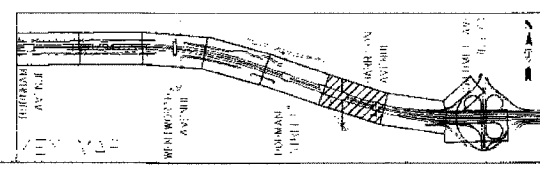
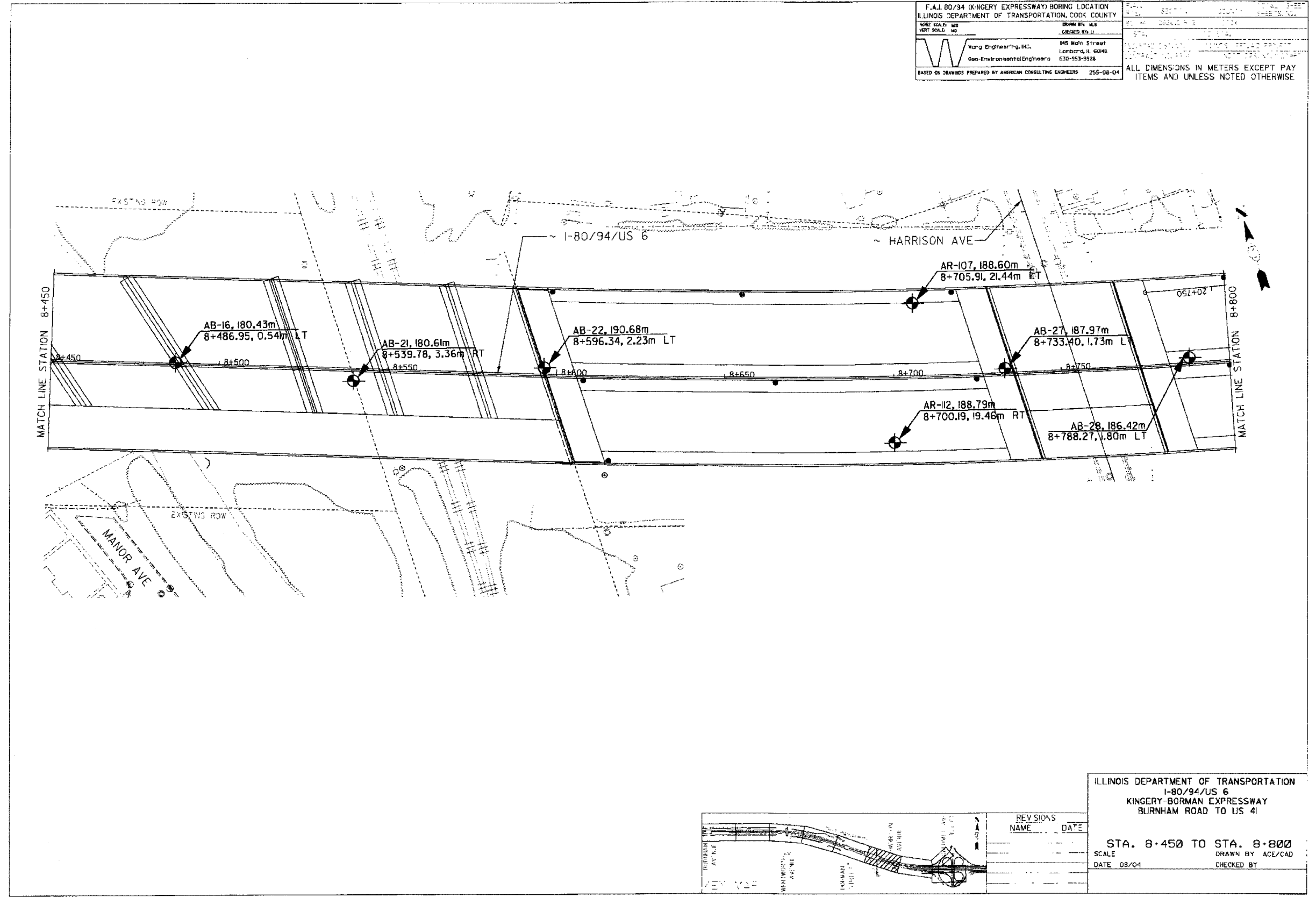


F.A.I. 80/94 KINGERY EXPRESSWAY BORING LOCATION		DATE: 08/04	SCALE: 1"=100'
ILLINOIS DEPARTMENT OF TRANSPORTATION, COOK COUNTY		SECTION: 165	SHEET NO. 165
WORK SCALE: HORIZ. 1"=100'	VERT. SCALE: 1"=10'	DRAWN BY: M.S.	CHECKED BY: L.L.
 Wang Engineering, Inc. Geo-Environmental Engineers 145 Main Street Lombard, IL 60148 630-953-9928		ALL DIMENSIONS IN METERS EXCEPT PAY ITEMS AND UNLESS NOTED OTHERWISE	
BASED ON DRAWINGS PREPARED BY AMERICAN CONSULTING ENGINEERS 255-08-04			



REVISIONS	
NAME	DATE

ILLINOIS DEPARTMENT OF TRANSPORTATION  
 I-80/94/US 6  
 KINGERY-BORMAN EXPRESSWAY  
 BURNHAM ROAD TO US 41

STA. 8+450 TO STA. 8+800  
 SCALE: 1"=100'  
 DATE: 08/04  
 DRAWN BY: ACE/CAD  
 CHECKED BY: