

F.A.I. 80/94 (KINGERY EXPRESSWAY) BORING LOCATION
ILLINOIS DEPARTMENT OF TRANSPORTATION, COOK COUNTY

HORIZ. SCALE: 1"=40'
VERT. SCALE: 1"=10'

DRAWN BY: M.S.
CHECKED BY: J.J.

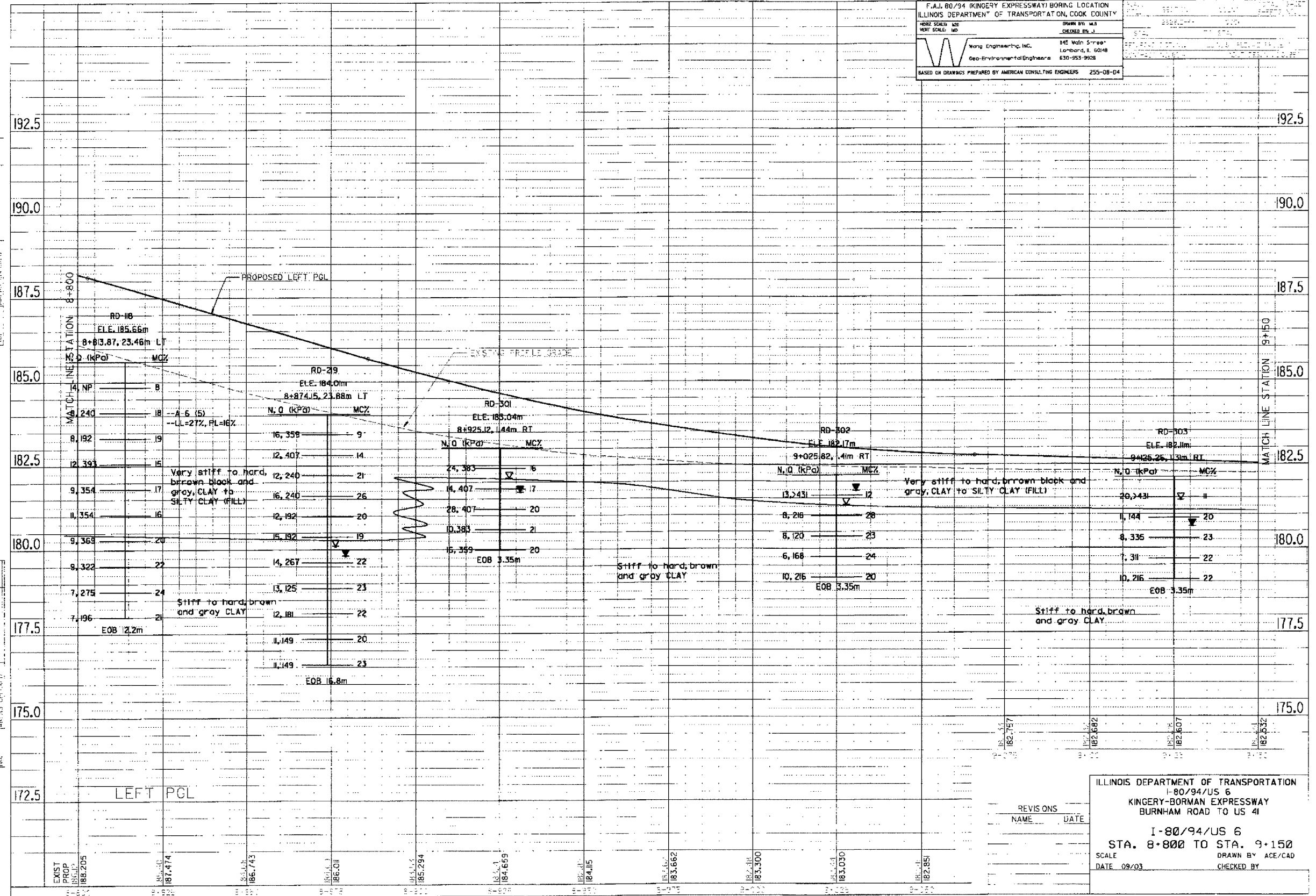
Wong Engineering, Inc.
145 Main Street
Lombard, IL 60148
630-953-9528

Geo-Environmental Engineers

BASED ON DRAWINGS PREPARED BY AMERICAN CONSULTING ENGINEERS 255-08-D4

DATE: _____
BY: _____
CHECKED BY: _____

DATE: _____
BY: _____
CHECKED BY: _____



REVISIONS	NAME	DATE

ILLINOIS DEPARTMENT OF TRANSPORTATION
I-80/94/US 6
KINGERY-BORMAN EXPRESSWAY
BURNHAM ROAD TO US 41

I-80/94/US 6
STA. 8+800 TO STA. 9+150

SCALE: _____
DATE: 09/03

DRAWN BY: ACE/CAD
CHECKED BY: _____