
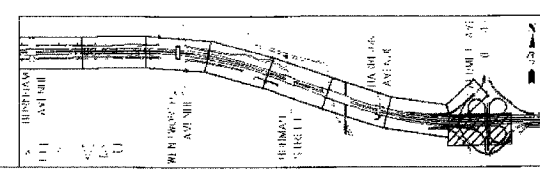
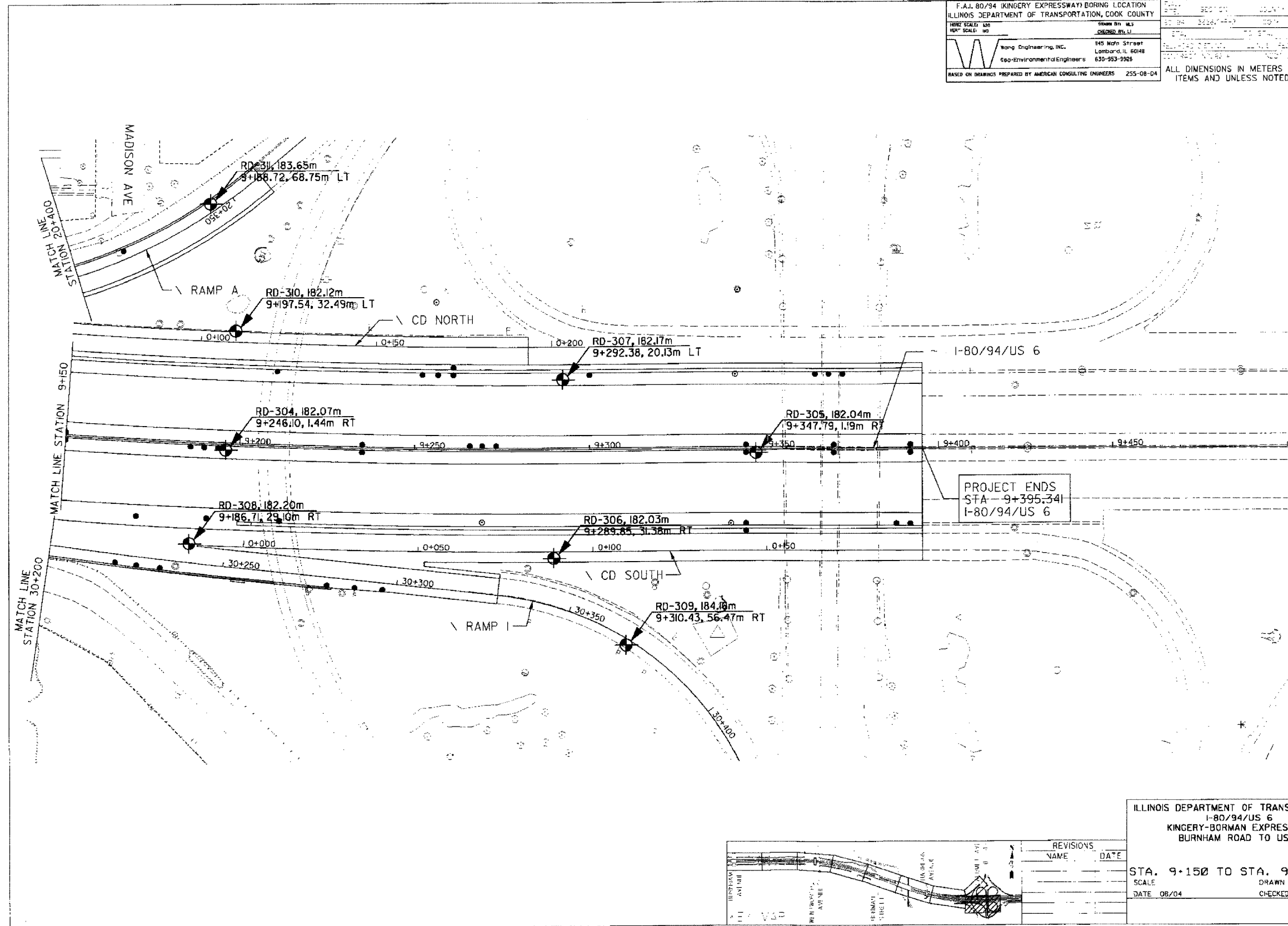


F.A.I. 80/94 (KINGERY EXPRESSWAY) BORING LOCATION ILLINOIS DEPARTMENT OF TRANSPORTATION, COOK COUNTY		DATE: 08/04	SCALE: 1"=100'
HORIZ. SCALE: 1"=100'	VERT. SCALE: 1"=10'	DRAWN BY: M.J. CHEN	CHECKED BY: M.J. CHEN
 Wang Engineering, Inc. Geo-Environmental Engineers 145 Main Street Lombard, IL 60148 630-953-2926		ALL DIMENSIONS IN METERS EXCEPT PAY ITEMS AND UNLESS NOTED OTHERWISE	
BASED ON DRAWINGS PREPARED BY AMERICAN CONSULTING ENGINEERS 255-08-04			



REVISIONS	
NAME	DATE

ILLINOIS DEPARTMENT OF TRANSPORTATION
 I-80/94/US 6
 KINGERY-BORMAN EXPRESSWAY
 BURNHAM ROAD TO US 41

STA. 9+150 TO STA. 9+395.341
 SCALE: 1"=100'
 DATE: 08/04

DRAWN BY: ACE/CAD
 CHECKED BY: M.J. CHEN