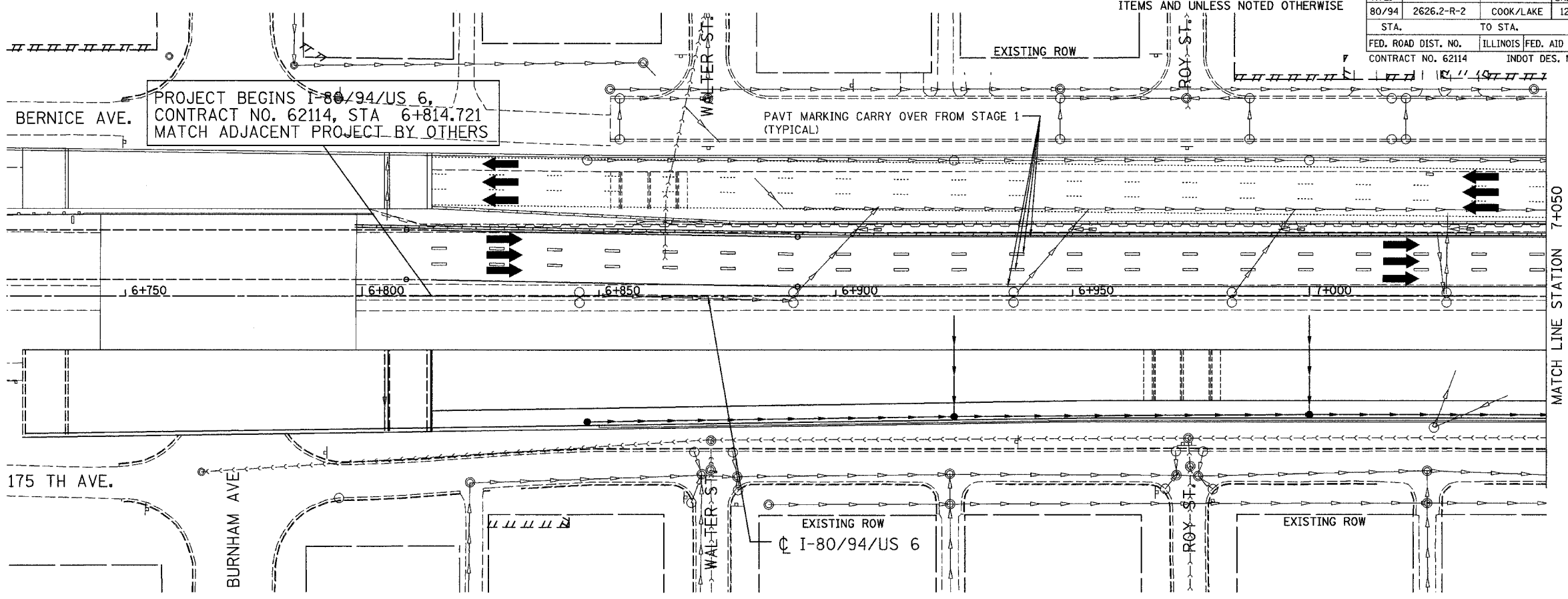


ALL DIMENSIONS IN METERS EXCEPT PAY ITEMS AND UNLESS NOTED OTHERWISE

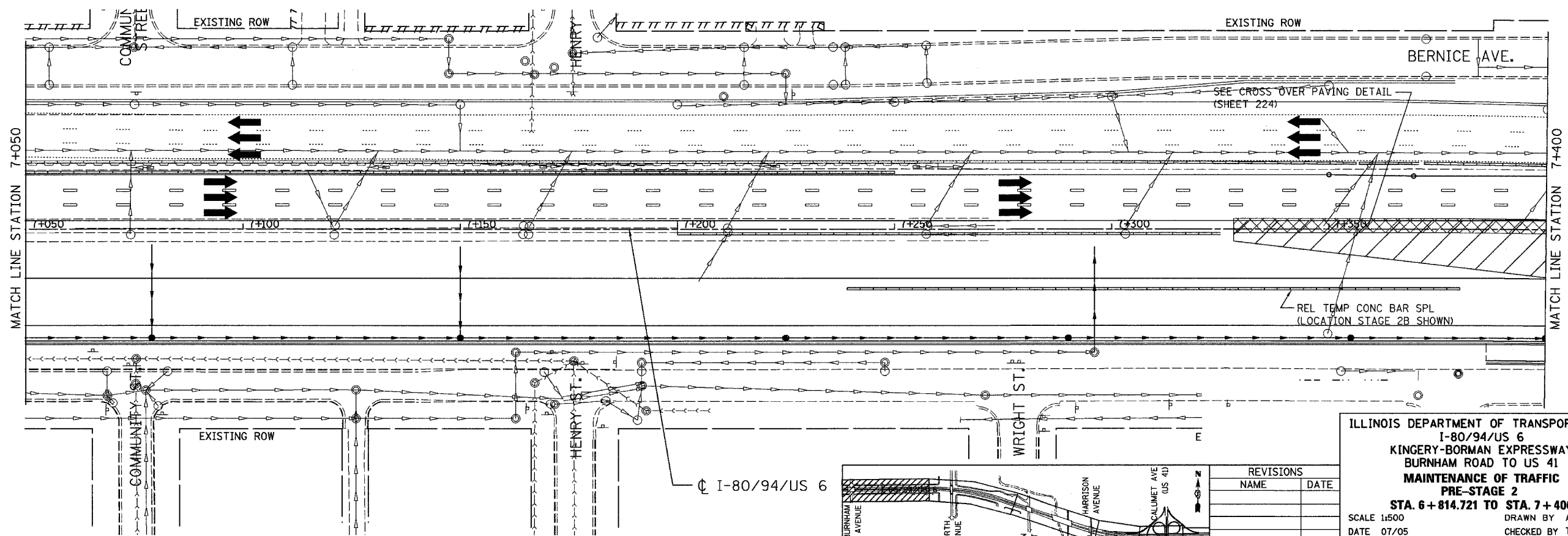
F.A.I. RTE.	SECTION	COUNTY	TOTAL SHEETS	SHEET NO.
80/94	2626.2-R-2	COOK/LAKE	1207	202
STA.	TO STA.			
FED. ROAD DIST. NO.	ILLINOIS FED. AID PROJECT			
CONTRACT NO. 62114	INDOT DES. NO. 0100987			



PROJECT BEGINS I-80/94/US 6,  
CONTRACT NO. 62114, STA 6+814.721  
MATCH ADJACENT PROJECT BY OTHERS

PAVT MARKING CARRY OVER FROM STAGE 1  
(TYPICAL)

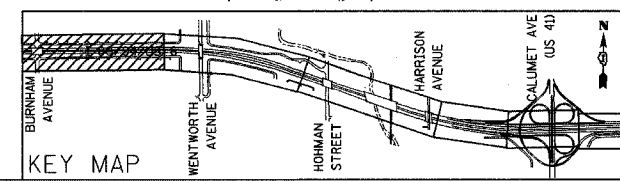
EXISTING ROW  
I-80/94/US 6



SEE CROSS OVER PAVING DETAIL  
(SHEET 224)

REL TEMP CONC BAR SPL  
(LOCATION STAGE 2B SHOWN)

I-80/94/US 6



ILLINOIS DEPARTMENT OF TRANSPORTATION  
I-80/94/US 6  
KINGERY-BORMAN EXPRESSWAY  
BURNHAM ROAD TO US 41  
MAINTENANCE OF TRAFFIC  
PRE-STAGE 2  
STA. 6 + 814.721 TO STA. 7 + 400

REVISIONS	
NAME	DATE

SCALE 1:500 DRAWN BY ACE/CAD  
DATE 07/05 CHECKED BY TAE

**AMERICAN**  
CONSULTING ENGINEERS