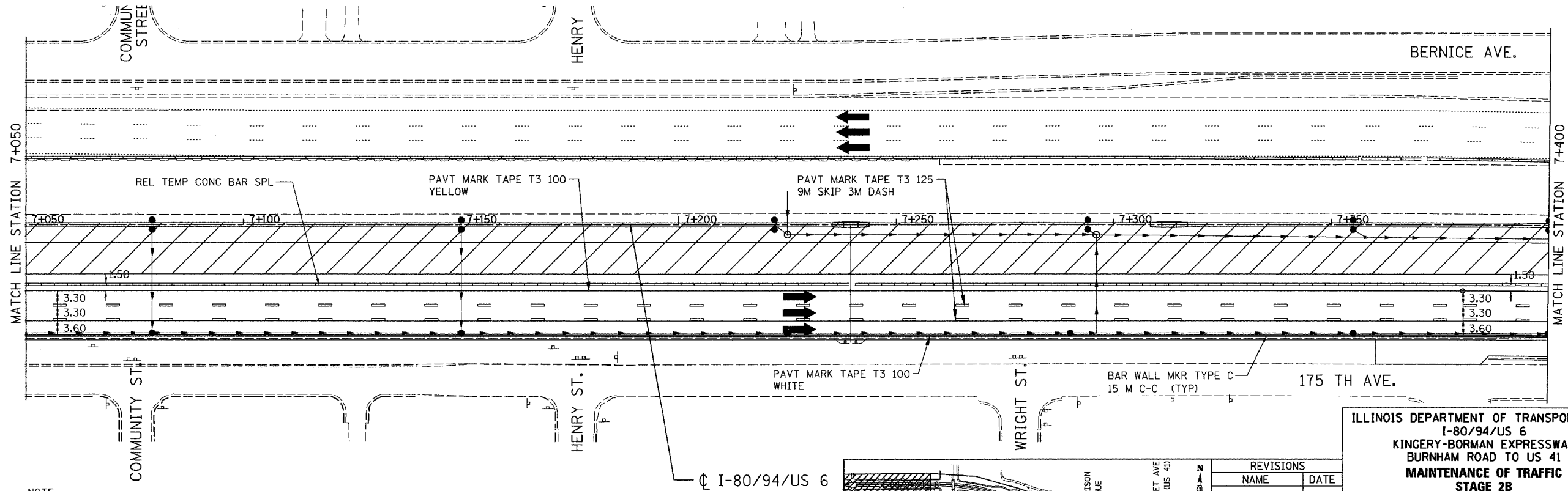
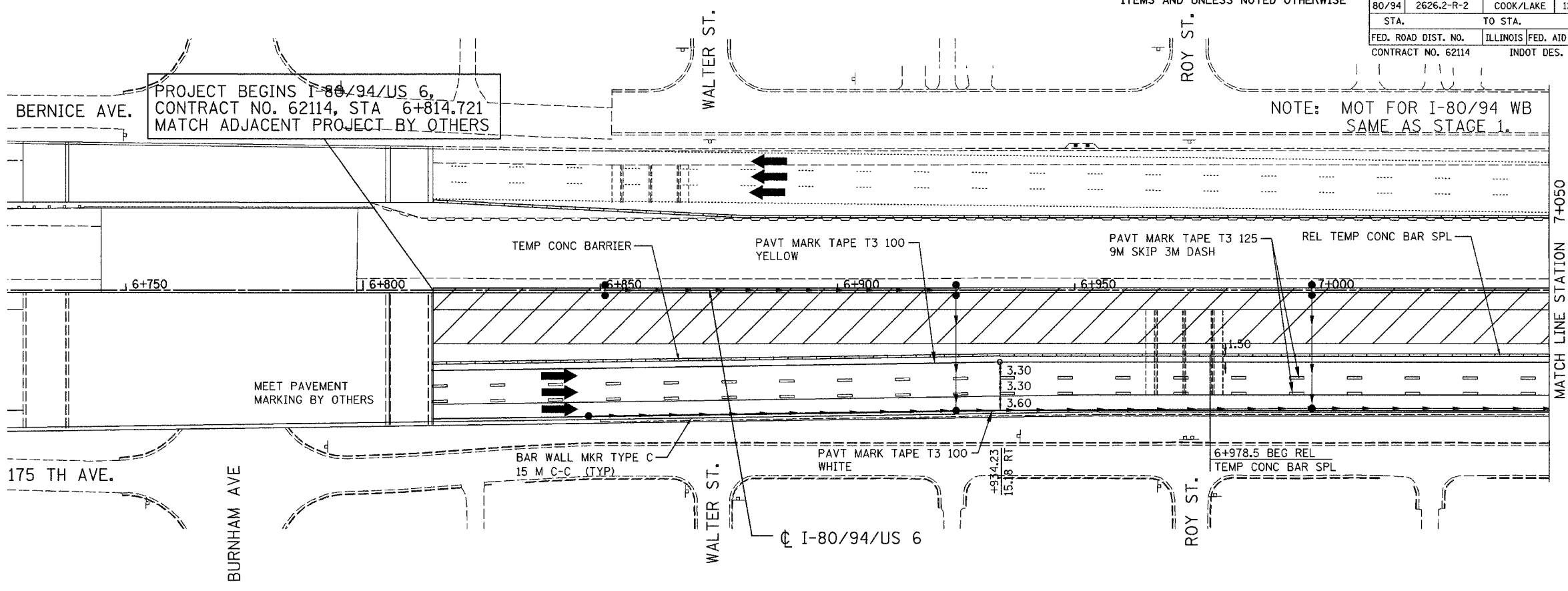
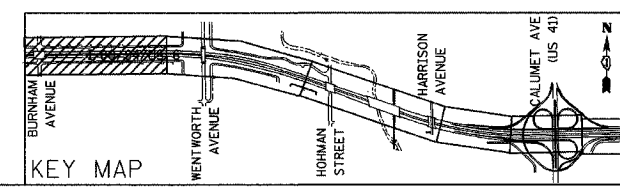


ALL DIMENSIONS IN METERS EXCEPT PAY ITEMS AND UNLESS NOTED OTHERWISE

F.A.I. RTE.	SECTION	COUNTY	TOTAL SHEETS	SHEET NO.
80/94	2626.2-R-2	COOK/LAKE	1207	213
STA.		TO STA.		
FED. ROAD DIST. NO.		ILLINOIS	FED. AID PROJECT	
CONTRACT NO. 62114		INDOT DES. NO. 0100987		



NOTE:
TRAFFIC IN THIS STAGE IS ALIGNED TO MATCH THE STAGE 2 TRAFFIC IN CONTRACT 62111. COORDINATION OF STAGE CHANGE IS REQUIRED.



REVISIONS	
NAME	DATE

ILLINOIS DEPARTMENT OF TRANSPORTATION
I-80/94/US 6
KINGERY-BORMAN EXPRESSWAY
BURNHAM ROAD TO US 41
MAINTENANCE OF TRAFFIC
STAGE 2B
STA. 6 + 814.721 TO STA. 7 + 400
SCALE 1:500 DRAWN BY ACE/CAD
DATE 07/05 CHECKED BY TAE

AMERICAN
CONSULTING ENGINEERS