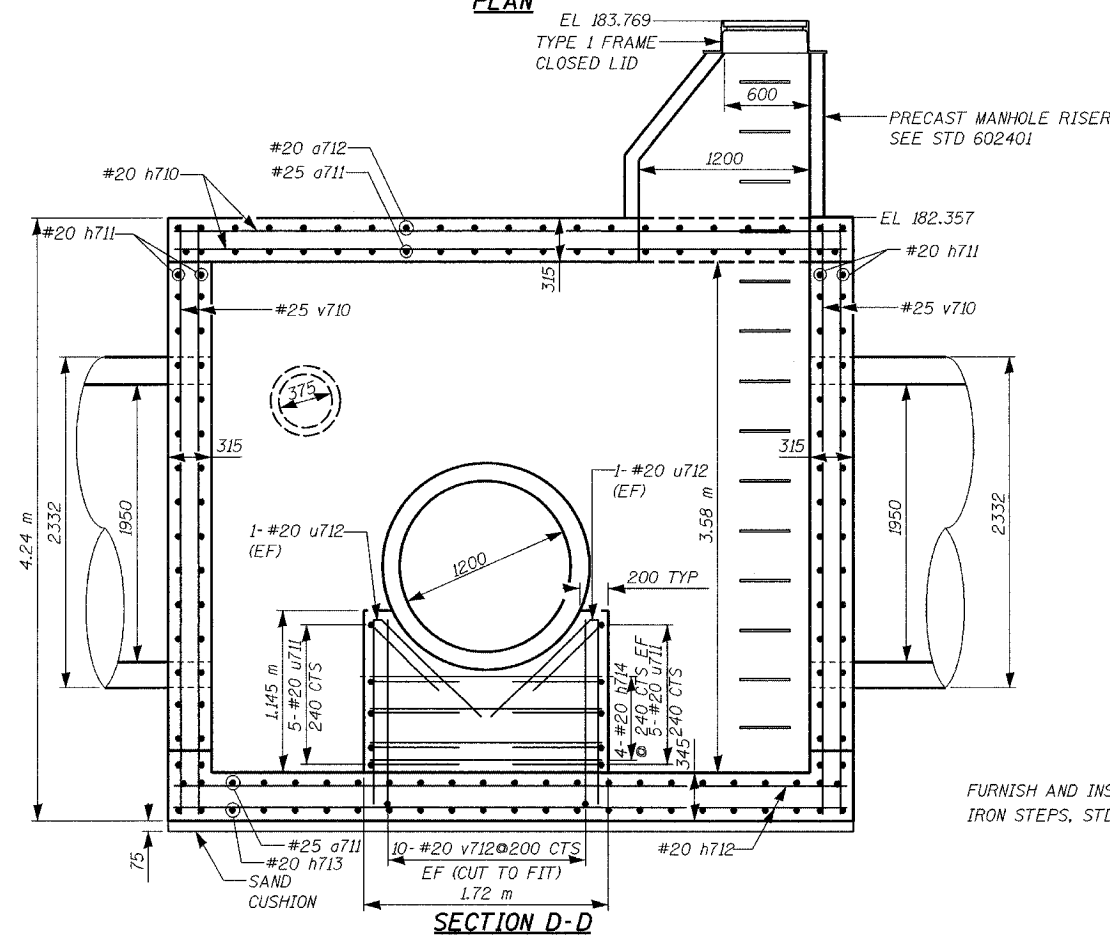
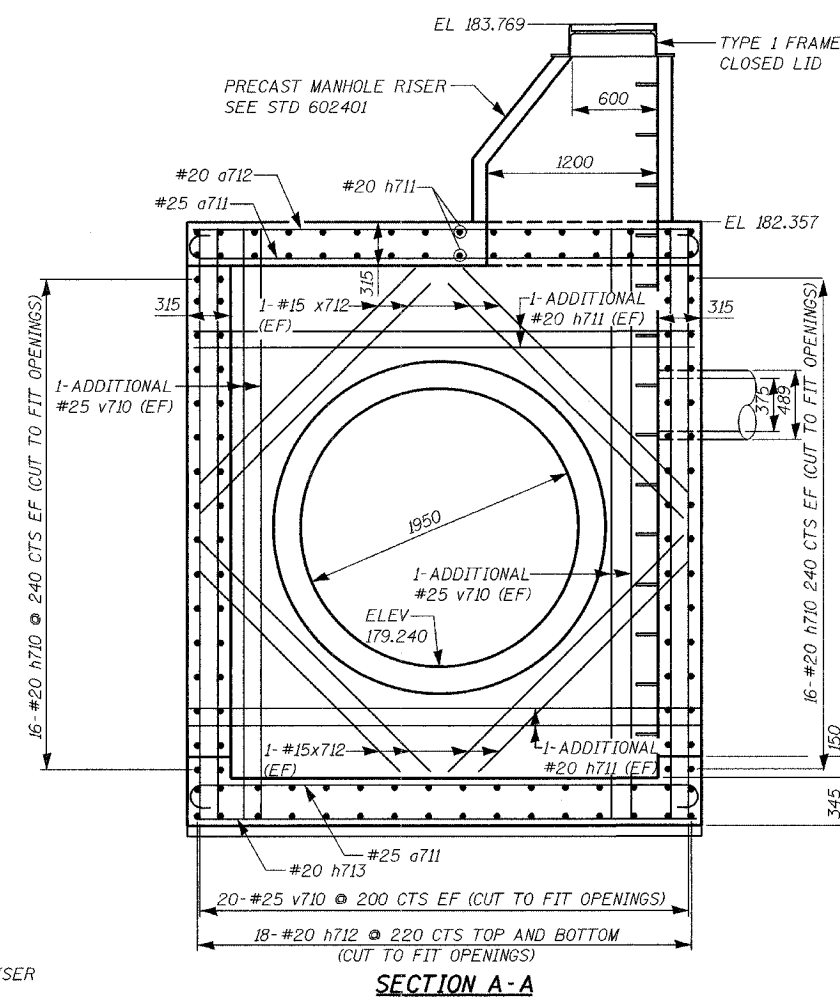
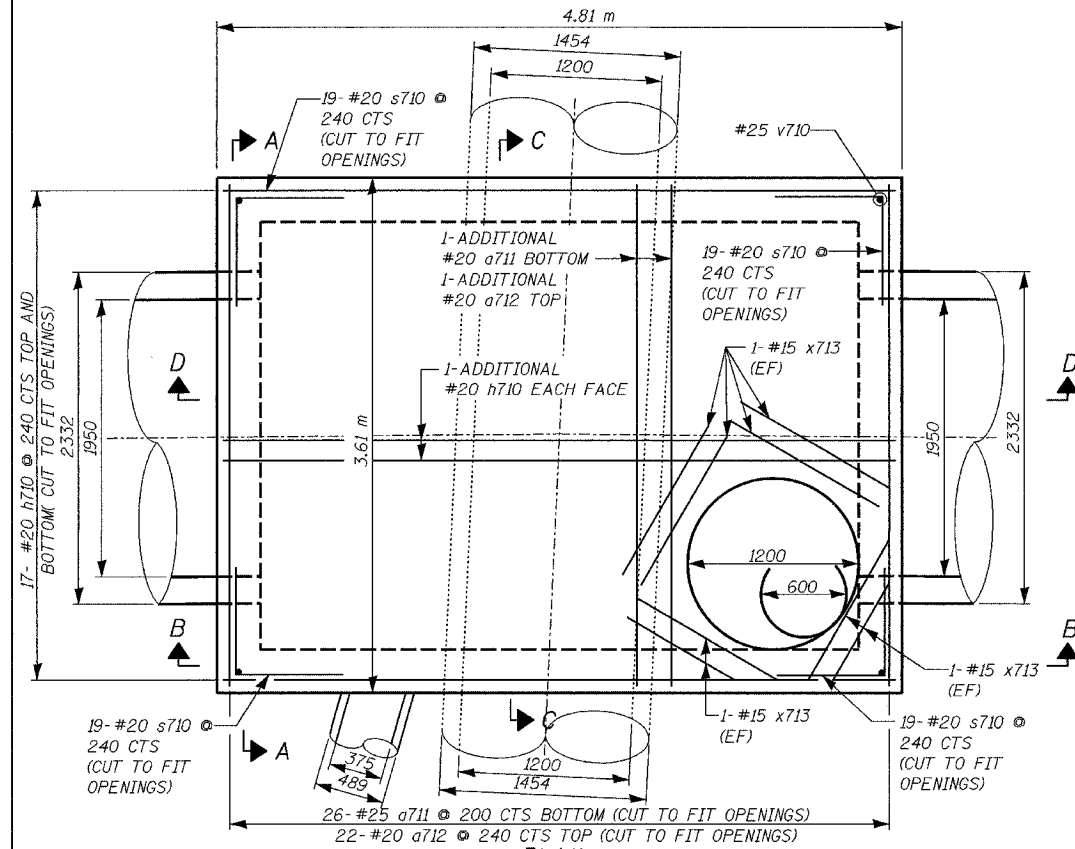


ALL DIMENSIONS IN MILLIMETERS EXCEPT  
PAY ITEMS AND UNLESS NOTED OTHERWISE

F.A.I. RTE.	SECTION	COUNTY	TOTAL SHEETS	SHEET NO.
80/94	2626.2-R-2	COOK/LAKE	1207	285
STA.	TO STA.			
FED. ROAD DIST. NO.	ILLINOIS	FED. AID PROJECT		
CONTRACT NO. 62114	INDOT DES. NO. 0100987			



FURNISH AND INSTALL CAST IRON STEPS, STD 602701

**DESIGN STRESSES**

CONCRETE  $f'_c = 24 \text{ MPa}$   
REINFORCEMENT  $f_y = 400 \text{ MPa}$

REVISIONS	
NAME	DATE

ILLINOIS DEPARTMENT OF TRANSPORTATION  
I-80/94/US 6 (KINGERY EXPRESSWAY)  
BURNAM ROAD TO US 41 (CALUMET AVE)

**JUNCTION CHAMBER NO. 2  
SHEET 1 OF 2**

SCALE NTS  
DATE 07/05  
DRAWN BY ACE/CAD  
CHECKED BY TAE

