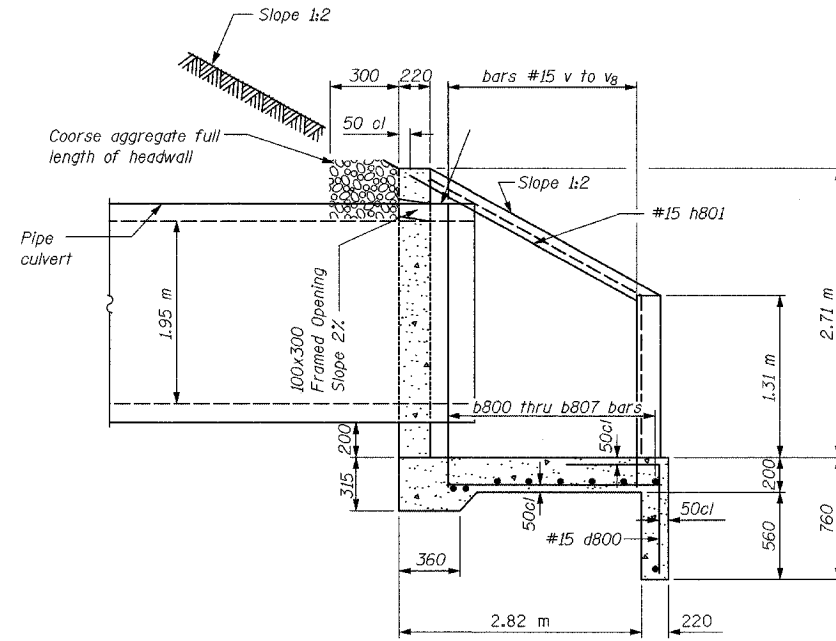
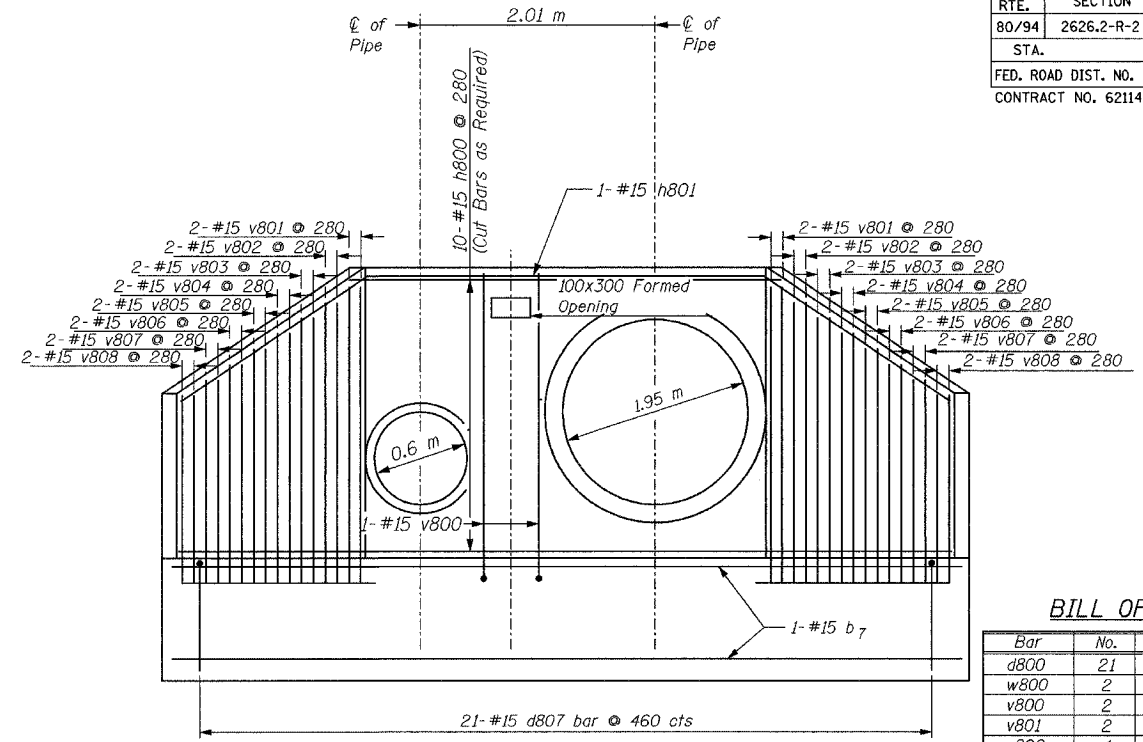


F.A.I. RTE.	SECTION	COUNTY	TOTAL SHEETS	SHEET NO.
80/94	2626.2-R-2	COOK/LAKE	1207	289
STA.	TO STA.			
FED. ROAD DIST. NO.	ILLINOIS	FED. AID PROJECT		
CONTRACT NO. 62114	INDOT DES. NO. 0100987			



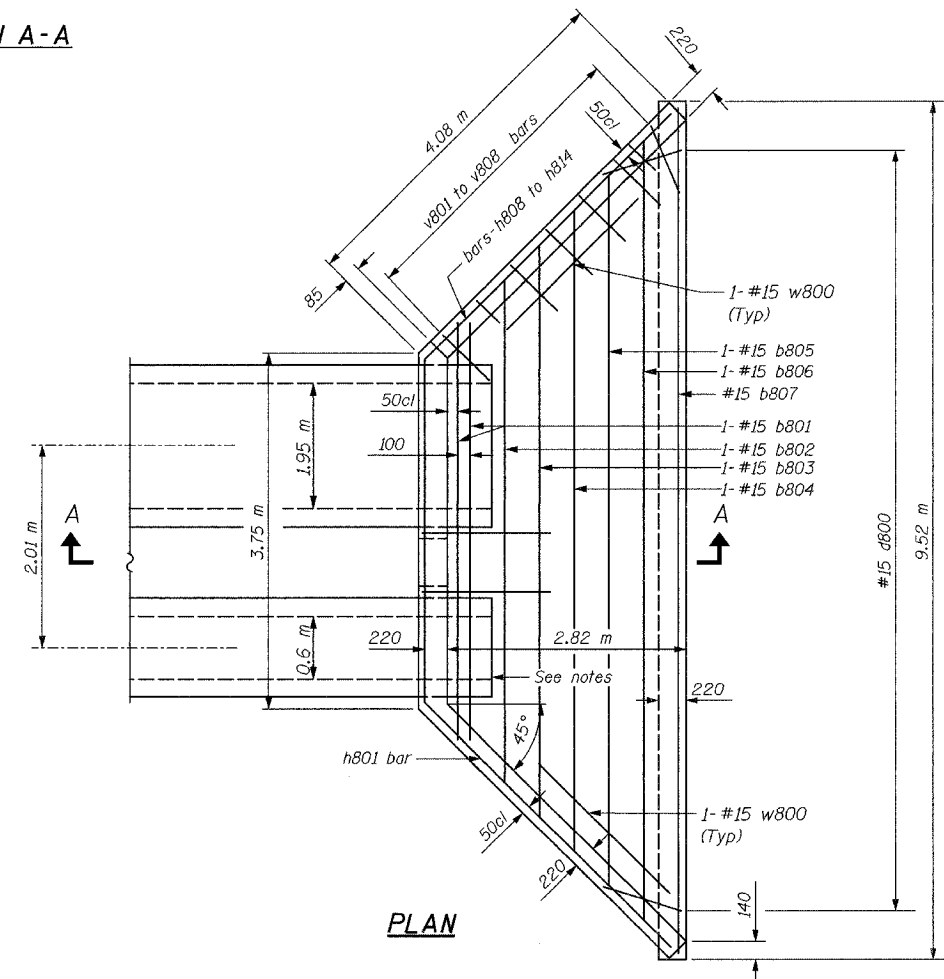
SECTION A-A



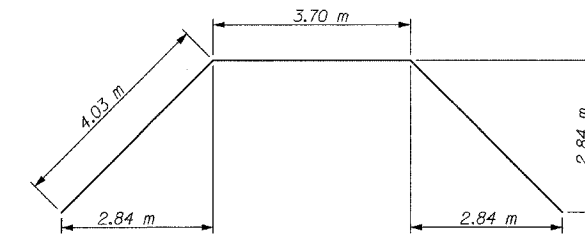
END ELEVATION

BILL OF MATERIAL

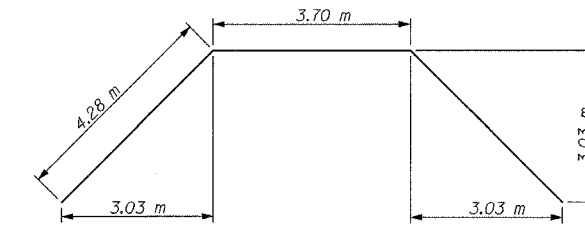
Bar	No.	Size	Length (m)	Shape
d800	21	#15	1.30	┌
w800	2	#15	3.05	—
v800	2	#15	3.42	└
v801	2	#15	3.27	└
v802	4	#15	3.17	└
v803	4	#15	2.98	└
v804	4	#15	2.79	└
v805	4	#15	2.60	└
v806	4	#15	2.40	└
v807	4	#15	2.21	└
v808	4	#15	2.02	└
b801	2	#15	4.25	—
b802	1	#15	5.17	—
b803	1	#15	6.09	—
b804	1	#15	7.01	—
b805	1	#15	7.93	—
b806	1	#15	8.85	—
b807	2	#15	9.45	—
h800	10	#15	11.76	—
h801	1	#15	12.26	—
Concrete Structures			m ³	10.48
Reinforcement Bars			kg	490



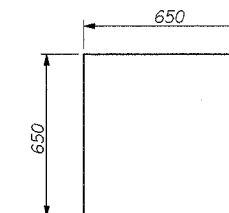
PLAN



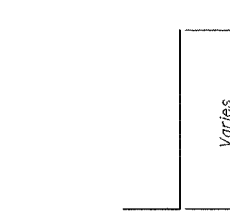
BAR h800



BAR h801



BAR d800



BAR v800 to v808

GENERAL NOTES

* If embankment slope above headwall is flatter than 1:2, provide wings for 1:2 slope

All slope ratios are expressed as units of vertical displacement to units of horizontal displacement (V:H)

All dimensions are in millimeters unless otherwise shown.

Pipes shall be extended beyond the face of wall to allow for the installation of the slip-on flat bottom check valves.

ILLINOIS DEPARTMENT OF TRANSPORTATION
I-80/94/US 6
KINGERY-BORMAN EXPRESSWAY
BURNHAM ROAD TO US 41
REINFORCED CONCRETE END SECTION
STRUCTURE A103

REVISIONS	
NAME	DATE

SCALE NONE
DATE 07/05

DRAWN BY ACE/CAD
CHECKED BY TAE

