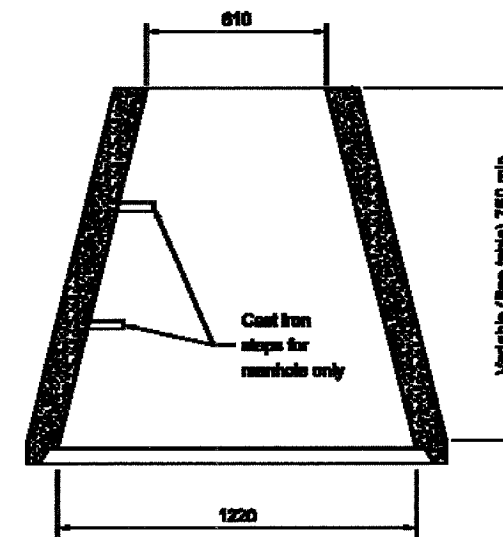


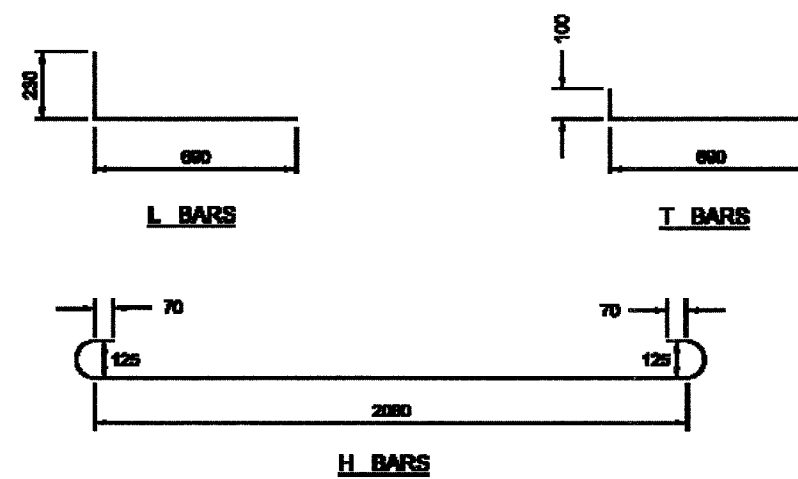
CONE HEIGHTS	
ECCENTRIC	CONCENTRIC
760	760
820	820
870	870
760	1220



**CONCENTRIC CONE**

**NOTES**

1. The concentric concrete section will not be permitted for manholes which are under the jurisdiction of the Indianapolis Sanitary District.



All Dimensions are in mm unless otherwise specified

**INDIANA DEPARTMENT OF TRANSPORTATION**

**MANHOLE BARS AND CONCENTRIC CONE**

**SEPTEMBER 2003**

**STANDARD DRAWING NO. 720-MH-ST-08**

	<i>Richard L. Vancleave</i> 9-26-03 <small>DESIGN SUPERVISOR ENGINEER</small> DATE
	<i>Michael J. Suter</i> 9-26-03 <small>CHIEF ENGINEER</small> DATE