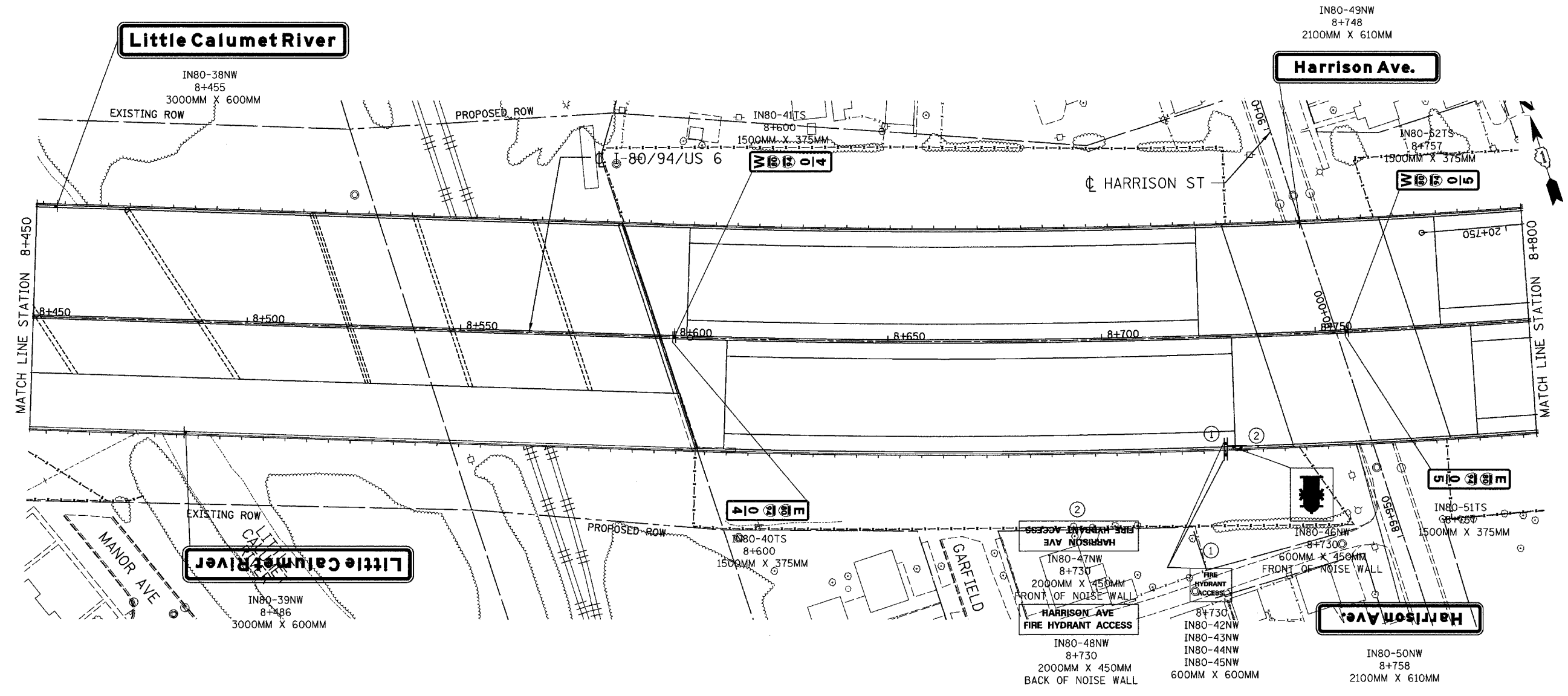


ALL DIMENSIONS IN METERS EXCEPT PAVEMENT ITEMS AND UNLESS NOTED OTHERWISE

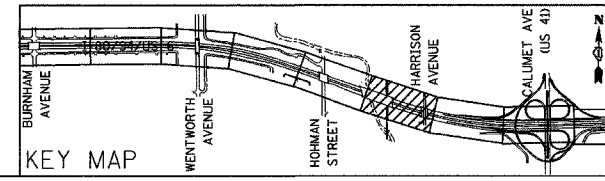
F.A.I. RTE.	SECTION	COUNTY	TOTAL SHEETS	SHEET NO.
80/94	2626.2-R-2	COOK/LAKE	1207	358
STA.	TO STA.			
FED. ROAD DIST. NO.	ILLINOIS	FED. AID PROJECT		
CONTRACT NO. 62114	INDOT DES. NO. 0100987			



NOTE:
THE BANDING OF SIGNS TO THE OVERHEAD SIGN STRUCTURE SUPPORTS SHALL BE INCLUDED IN THE COST FOR SIGN PANELS.

ILLINOIS DEPARTMENT OF TRANSPORTATION
I-80/94/US 6
KINGERY-BORMAN EXPRESSWAY
BURNHAM ROAD TO US 41
SIGNING PLAN

STA. 8+450 TO STA. 8+800
SCALE 1:500
DATE 07/05
DRAWN BY ACE/CAD
CHECKED BY TAE



REVISIONS	
NAME	DATE