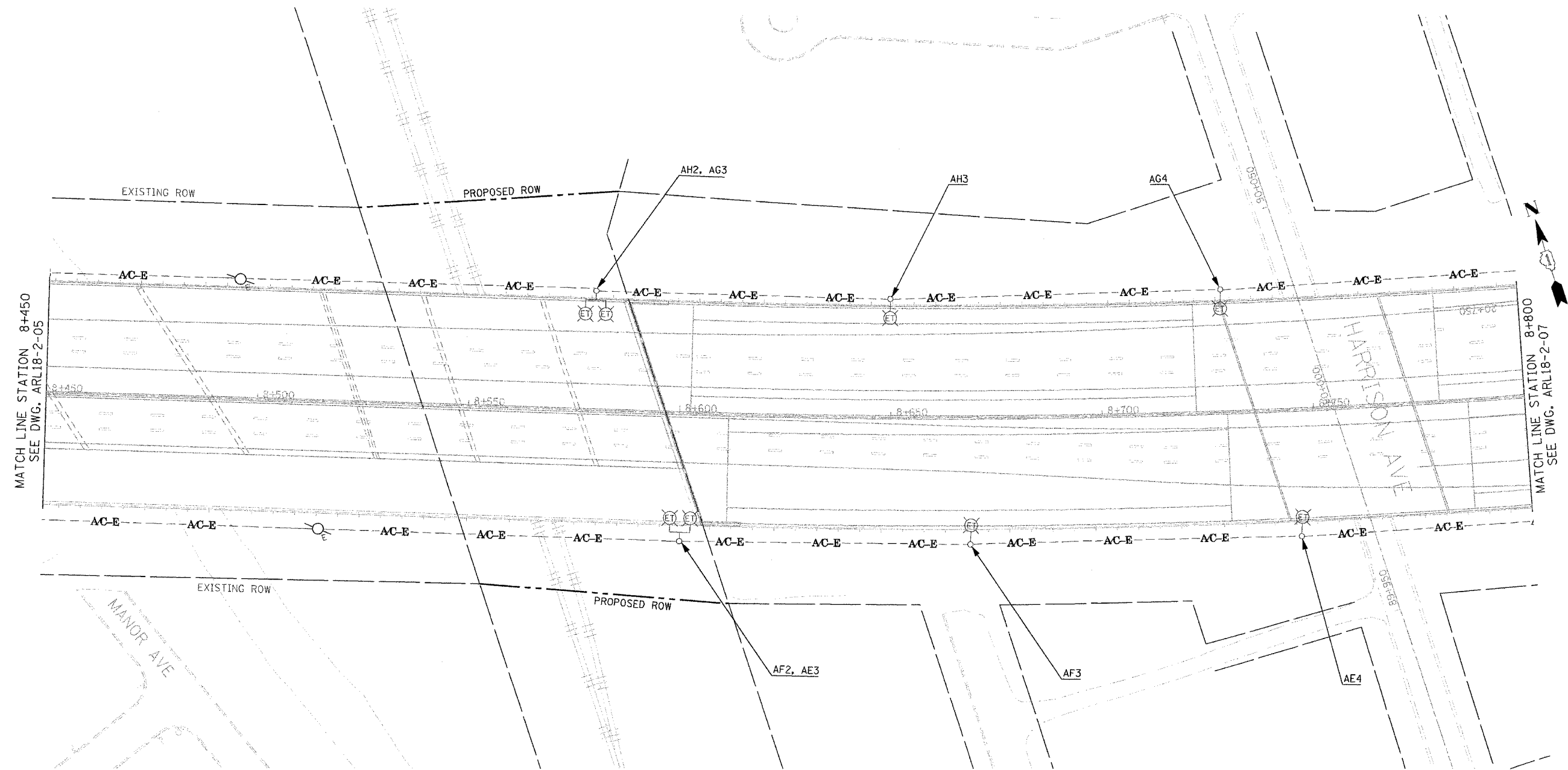


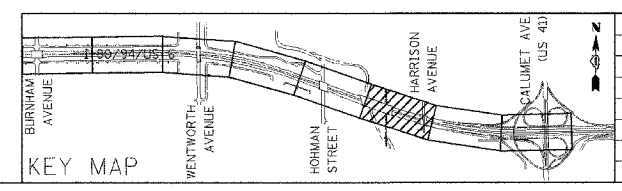
F.A.I. RTE.	SECTION	COUNTY	TOTAL SHEETS	SHEET NO.
80/94	2003-089I	COOK	1207	457
STA.	TO STA.			
FED. ROAD DIST. NO.	ILLINOIS	FED. AID PROJECT	CONTRACT # 62114	



MATCH LINE STATION 8+450
SEE DWG. ARL18-2-05

MATCH LINE STATION 8+800
SEE DWG. ARL18-2-07

NOTE:
INSTALLATION OF TEMPORARY LIGHT POLE UNITS, AND AERIAL CABLE ON NORTHSIDE IN INDIANA SHALL BE COORDINATED WITH CONTRACT 62664.



REVISIONS	
NAME	DATE

ARL18-2-06

ILLINOIS DEPARTMENT OF TRANSPORTATION
I-80/94/US 6
KINGERY-BORMAN EXPRESSWAY
BURNHAM ROAD TO US 41
EXISTING LIGHTING PLAN
I-80 /94 /US-6
STA. 8 + 450 TO STA. 8 + 800
SCALE 1:500 DRAWN BY EA0/BC
DATE 07/18/05 CHECKED BY PKG/BC