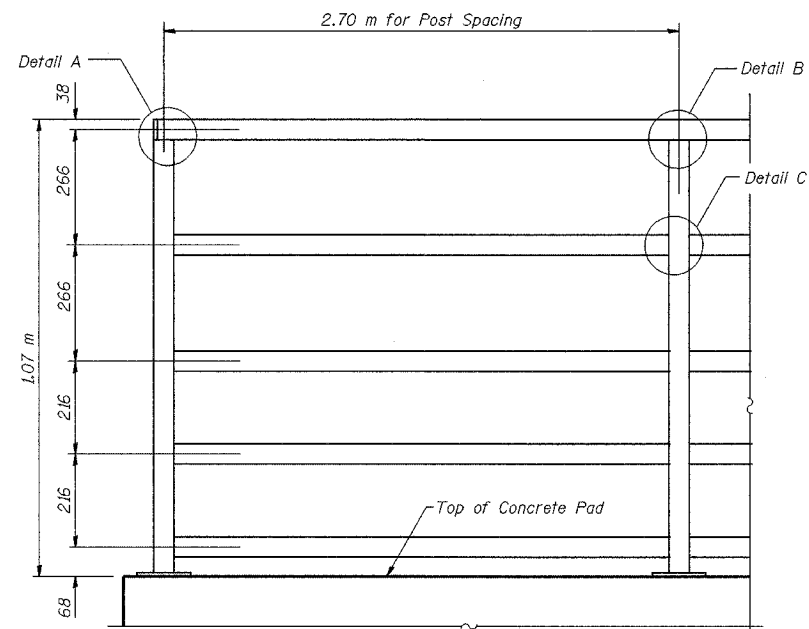
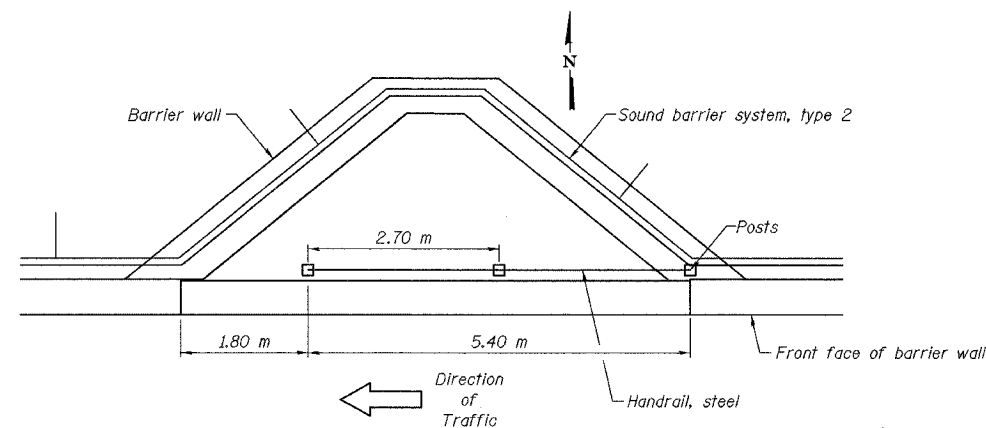
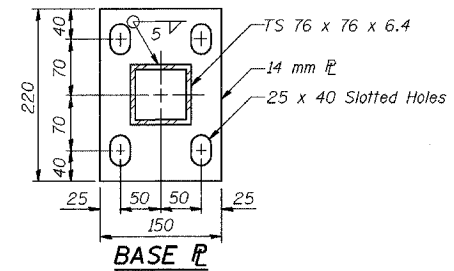
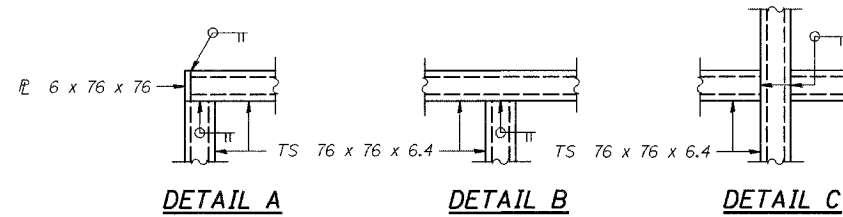


F.A.I. RTE.	SECTION	COUNTY	TOTAL SHEETS	SHEET NO.
80/94	2626.2-R-2	COOK/LAKE	1207	501
STA.		TO STA.		
FED. ROAD DIST. NO.	ILLINOIS FED. AID PROJECT			
CONTRACT NO. 62114	INDOT DES. NO. 0100987			

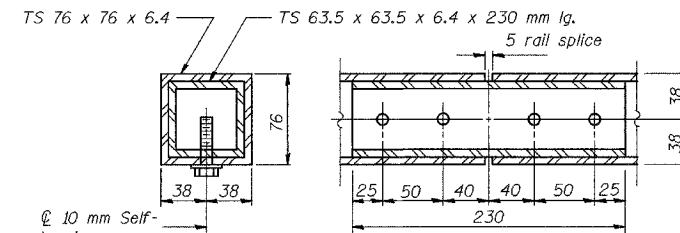


**HANDRAIL, STEEL**  
(Inside Face of Rail)

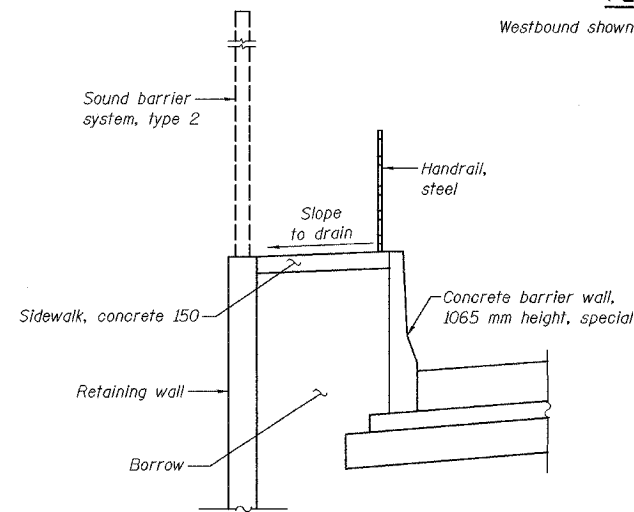


**PLAN**

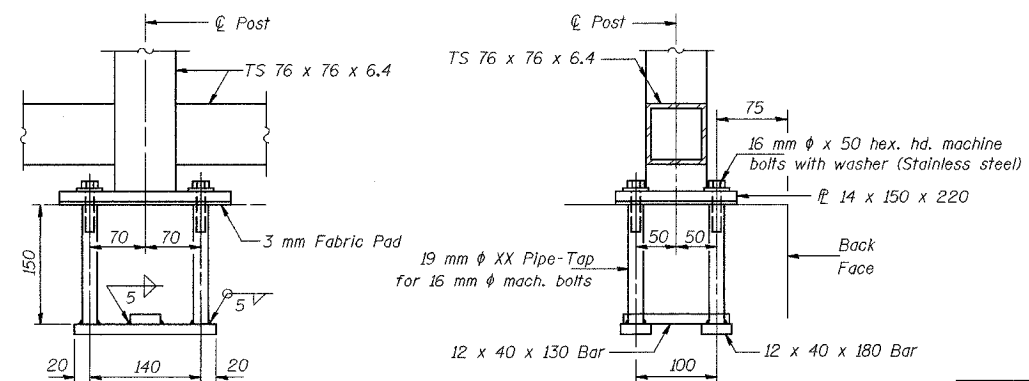
Westbound shown, Eastbound similar



**RAIL SPLICE**



**SECTION**



**ANCHOR BOLT DETAILS**

(In lieu of the cast-in-place anchor device shown, the Contractor has the option of drilling and epoxy grouting M16 anchor rods for the connections on top of the parapets. Embedment shall be according to the manufacturer's specifications.)

**NOTES**

- Railing shall be according to Section 604 of the Indiana Standard Specifications, except as noted, and will be paid for at the Contract Unit Price per meter for Handrail steel (Indiana).
- Hollow structural steel tubing shall conform to the requirements of ASTM designation A 500, Grade B, structural steel tubing.
- All other steel shapes and plates shall conform to the requirements of AASHTO M 270M Grade 250.
- If the option of drilling and epoxy grouting the anchor rods is chosen, the Contractor shall use the capsule or the adhesive cartridge type anchor rods that have been previously tested and given a prior approval by the Department. The Contractor shall install these anchor rods in pre-drilled holes according to the manufacturer's recommendations and procedures. The capsule or the adhesive cartridge shall be sealed with premeasured amounts of the adhesive chemical.
- Space reinforcement to miss anchor rods.
- All dimensions are in millimeters (mm) except as noted.
- All posts, railing, splices, anchor devices, and bent plates shall be galvanized after shop fabrication according to AASHTO M 111 and ASTM A 385. All bolts, nuts, washers and anchor rods shall be galvanized according to AASHTO M 232 except stainless steel bolts as noted.
- Vent holes for galvanizing shall be placed in the posts and rails at locations that will not allow the accumulation of moisture in the members.

REVISIONS	
NAME	DATE

ILLINOIS DEPARTMENT OF TRANSPORTATION  
I-80/94/US 6 (KINGERY EXPRESSWAY)  
BURNAM ROAD TO US 41 (CALUMET AVE)  
**HANDRAIL DETAIL AT  
WEIGH-IN-MOTION SYSTEM**

SCALE: DATE 07/05  
DRAWN BY ACE/CAD  
CHECKED BY TAE

