

*****ref_list_name*****
 7-11-2005 13:53:34
 T:\DOCUMENTS\139150\STRUCTURE\DRAWING\62110\62110.dwg
 12 3 4 5 6 7 8 9 10 11 12 13 14 15 16 17 18 19 20 21 22 23 24 25 26 27 28 29 30 31 32 33 34 35 36 37 38 39 40 41 42 43 44 45 46 47 48 49 50 51 52 53 54 55 56 57 58 59 60 61 62 63

BENCHMARKS:
 BM "6E" Square cut in northwest corner of southwest handrail (J-Wall) of the southwest abutment of existing I-80 bridge over Burnham Ave. El. 187.309

EXISTING STRUCTURE:
 Structure No. 016-0082 Three span, 54.839 m back to back of abutment, continuous non-composite steel multi-beam bridge on multi-column concrete piers and open abutments. 16.98 m between barriers (Each Direction).

SALVAGE: None

STAGING: See sections on Sht. BS-4 for staging.

F.A.I. RTE.	SECTION	COUNTY	TOTAL SHEETS	SHEET NO.
80/94	2626.2-R-2	COOK	1207	541
STA.	TO STA.			
FED. ROAD DIST. NO.	ILLINOIS	FED. AID PROJECT		

CONTRACT NO. 62114

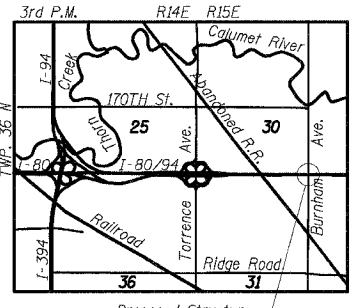
DESIGN SPECIFICATIONS:
 2002 AASHTO Standard Specifications for Highway Bridges.

1989 AASHTO Guide Specifications for Structural Design of Sound Barriers with 1992 Interims.

DESIGN LOADING:
 Roadway Live Load: MS-18 & Alt.
 Future Wearing Surface: 2.4 kN/sq. m.
 Noise Abatement Wall:
 Wind Load: 1.7 kPa
 Design Height: 3.16 m measured from top of parapet

DESIGN STRESSES:
 Concrete, f'c: 24 MPa
 Reinforcement, fy: 400 MPa
 Structural Steel, fy: 345 MPa (M270M Grade 345)
 fy: 250 MPa (M270M Grade 250)

SEISMIC DATA:
 Seismic Performance Category (SPC): A
 Bedrock Acceleration Coefficient (A): 0.04g
 Site Coefficient (S): 1.0



- LEGEND**
- #240 Soil Boring
 - Exist. Combined Sewer
 - Existing Gas Main (to be relocated)
 - Existing Water Main
 - Existing Telephone
 - Existing Cable Television (to be relocated by others)
 - Proposed Storm Sewer (See Drainage Plans)
 - Existing Storm Sewer (See Drainage Plans)
 - Existing Manhole (See Drainage Plans)
 - Existing Catch Basin (See Drainage Plans)
 - Proposed Manhole (See Drainage Plans)

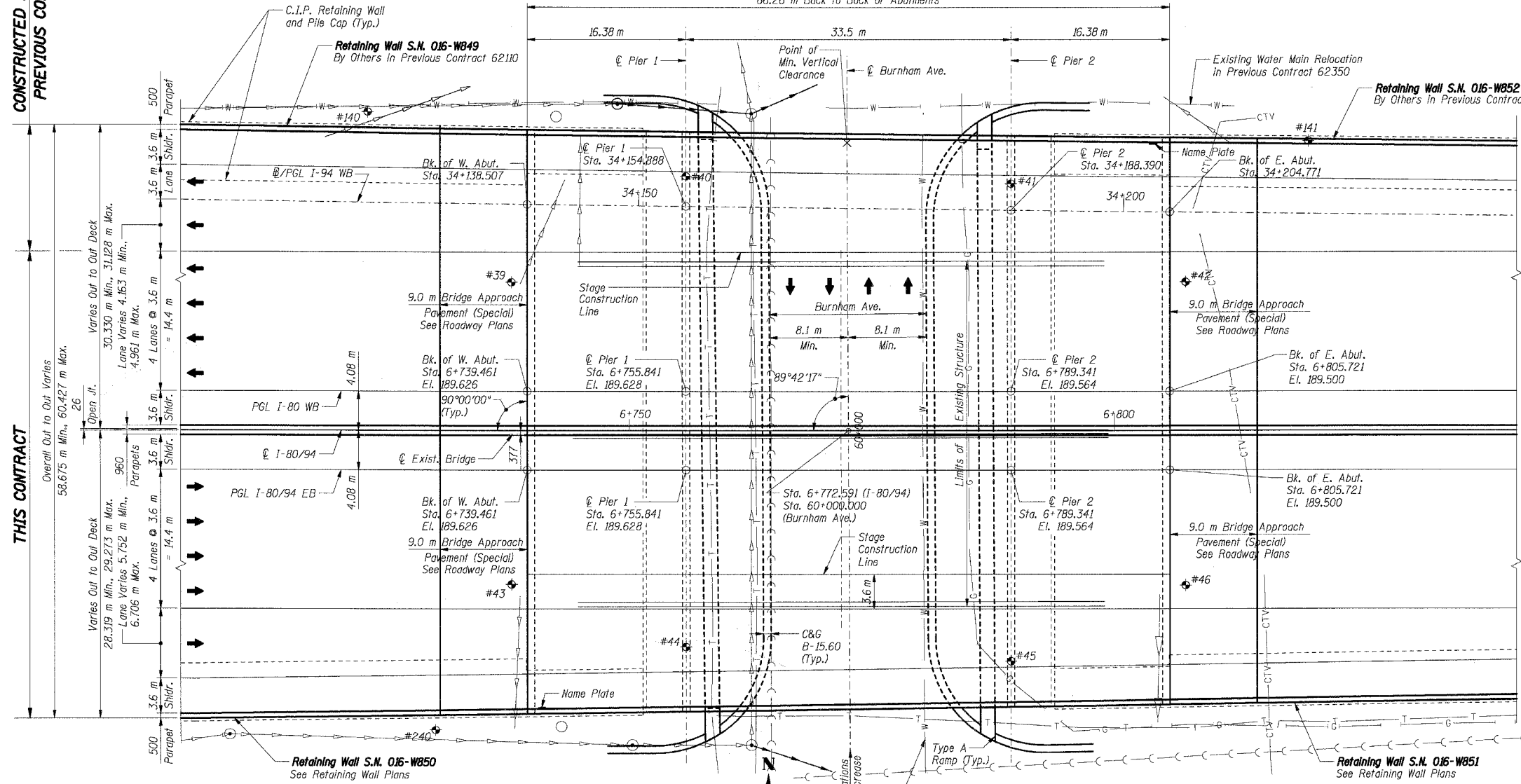
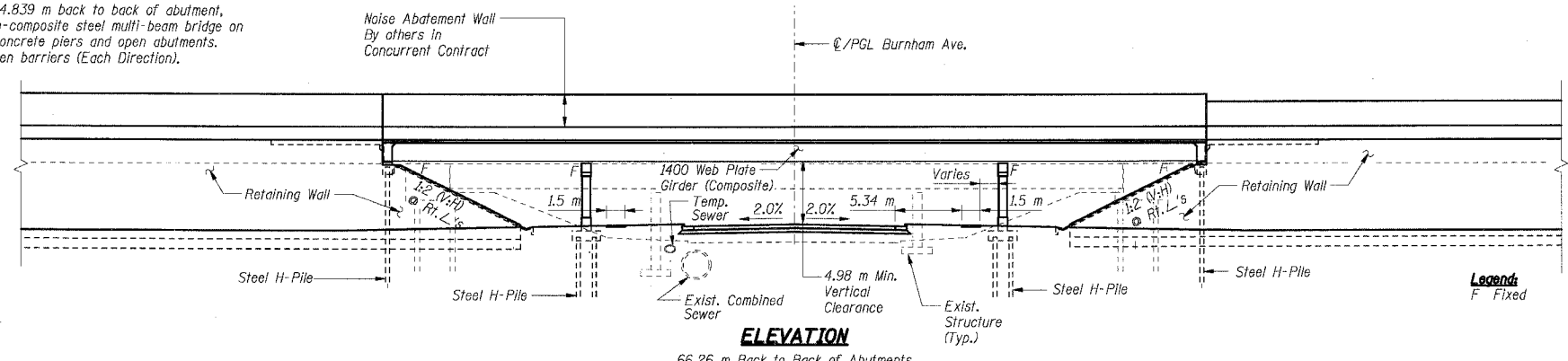
THIS SHEET FOR INFORMATION ONLY

ILLINOIS DEPARTMENT OF TRANSPORTATION
 F.A.I. ROUTE 80/94 (KINGERY EXPRESSWAY)
 EB & WB INSIDE LANES (MAINLINE) CONSTRUCTION
 I-80/94 OVER BURNHAM AVENUE
 STRUCTURE NO. 016-2791 STA. 6+772.591
 SECTION 1977-121-R
 COOK COUNTY

DATE: 7/18/2005 DRAWN BY: LG
 CHECKED BY: MJK
TENG
 ENGINEERS/ARCHITECTS/PLANNERS
 CHICAGO, ILLINOIS

CONSTRUCTED BY OTHERS IN PREVIOUS CONTRACT 62110

THIS CONTRACT



- Notes:**
1. All dimensions are in millimeters (mm) except as noted.
 2. Minimum and maximum dimensions are measured along the back of abutments perpendicular to C-1-80/94.
 3. For PGL of Burnham Ave. & I-80 see Sht. BS-2

SHT. BS-1 OF 60

REVISIONS	
NAME	DATE

GENERAL PLAN & ELEVATION