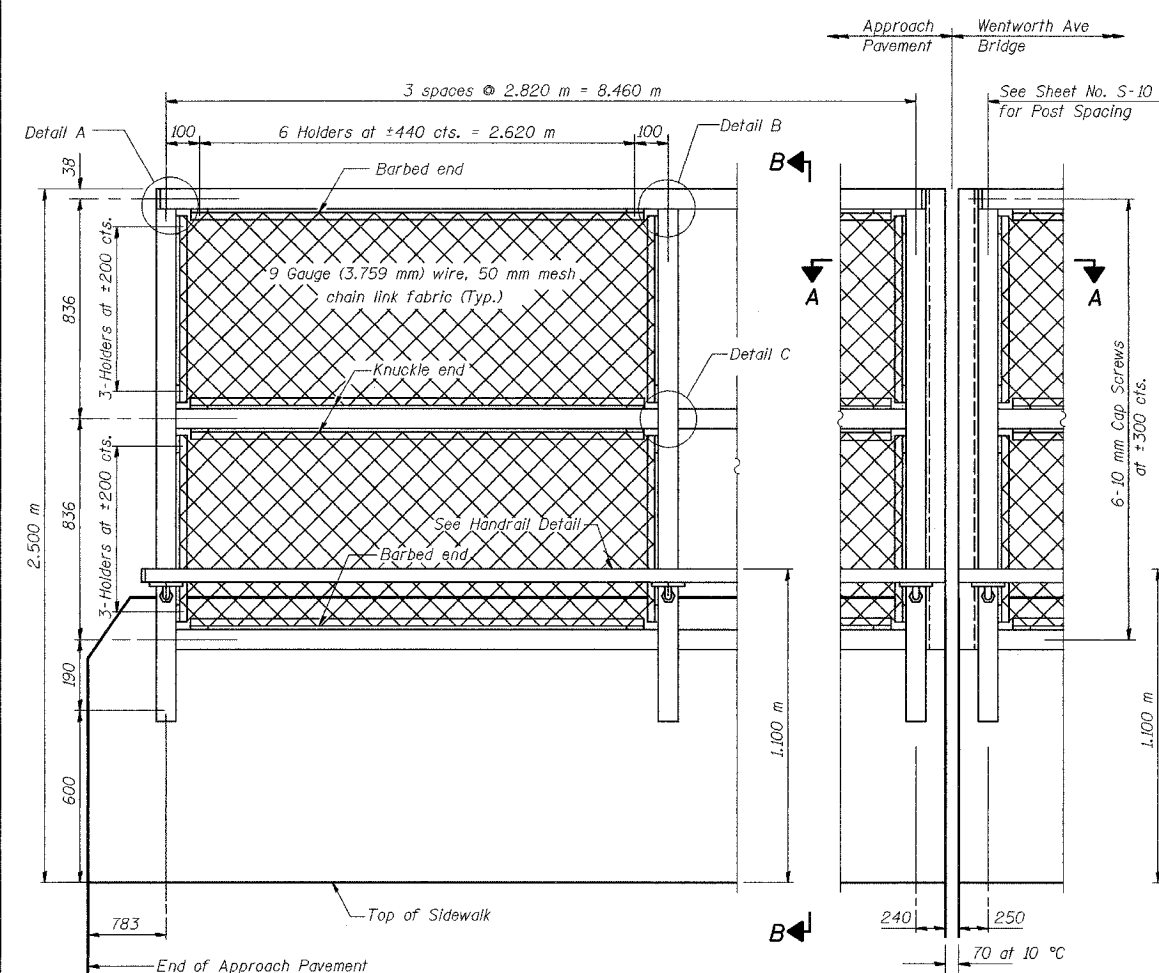


ROUTE NO.	SECTION	COUNTY	SHEET	SHEET NO. S-11
1207	555	COOK	35 SHEETS	

CONTRACT No. 62114

NOTES

Railing shall be according to Section 509 of the Standard Specifications, except as noted, and will be paid for at the Contract Unit Price per meter for Pedestrian Railing (Special).
 The 9 gauge (3.759 mm) fabric ties shall be according to Article 1006.27(d) of the Standard Specifications.
 Installation of the chain link fabric shall be according to Section 664 of the Standard Specifications.
 Hollow structural steel tubing shall conform to the requirements of ASTM designation A 500, Grade B, structural steel tubing.
 All other steel shapes and plates shall conform to the requirements of AASHTO M 270M Grade 250.
 The chain link fabric shall be placed along Pedestrian Side as shown on Section A-A.
 Stretcher bars shall be used at all four sides of each panel. If the option of drilling and epoxy grouting the anchor rods is chosen, the Contractor shall use the capsule or the adhesive cartridge type anchor rods that have been previously tested and given a prior approval by the Department. The Contractor shall install these anchor rods in pre-drilled holes according to the manufacturer's recommendations and procedures. The capsule or the adhesive cartridge shall be sealed with premeasured amounts of the adhesive chemical.
 Space reinforcement to miss anchor rods.
 All posts, railing, splices, anchor devices, and bent plates shall be galvanized after shop fabrication according to AASHTO M 111 and ASTM A 385. All bolts, nuts, washers and anchor rods shall be galvanized according to AASHTO M 232 except stainless steel bolts as noted.
 Vent holes for galvanizing shall be placed in the posts and rails at locations that will not allow the accumulation of moisture in the members.
 The chain link fabric shall conform to the requirements of Article 1006.27(a)(1)a, b or c of the Standard Specifications.
 All dimensions are in millimeters (mm) except as noted.

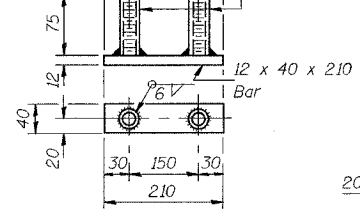


ELEVATION
(Inside Face)

ELEVATION
(At Expansion Joint)

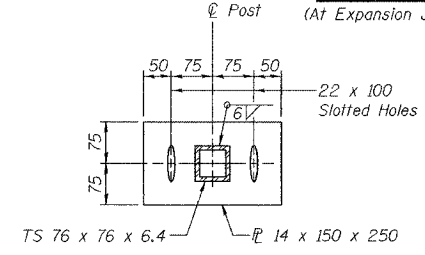
* Threaded areas shall be plugged or blocked off during casting of beam.

* 19 mm φ XX Pipe or Hex Nuts (Conforming to ASTM: A 563M, Grade A) 75 mm long. Tap pipe for 16 mm φ Cap Screw

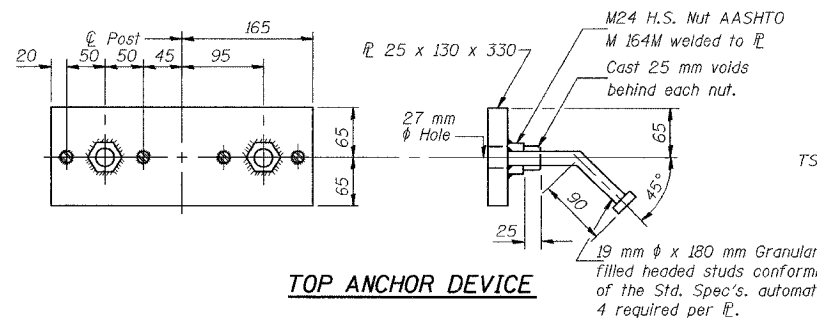


BOTTOM ANCHOR DEVICE

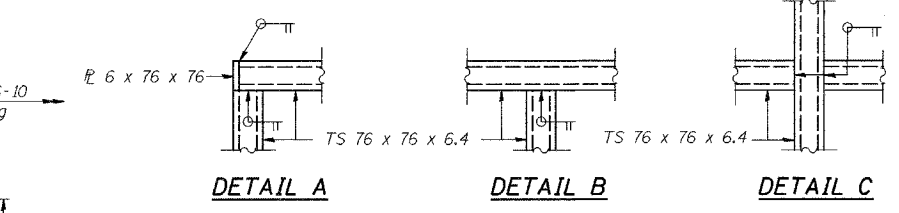
DESIGNED	JDG
CHECKED	JDG
DRAWN	MJB
CHECKED	JDG



BOTTOM ANCHOR PLATE



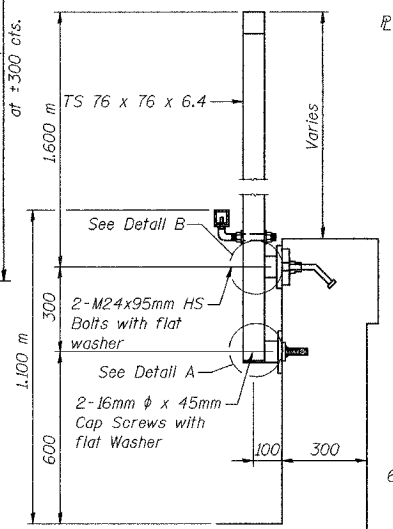
TOP ANCHOR DEVICE



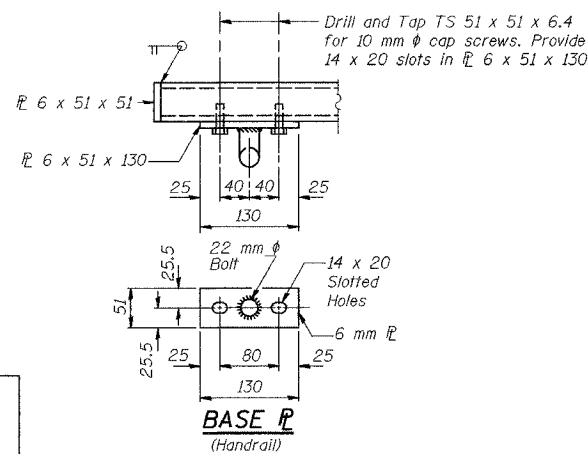
DETAIL A

DETAIL B

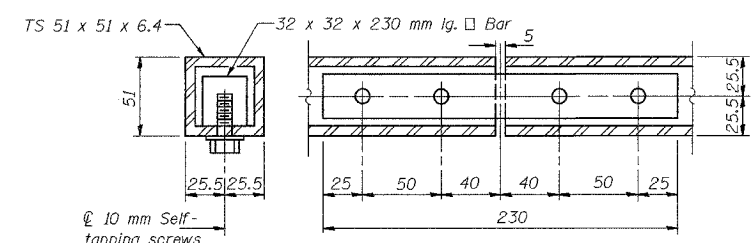
DETAIL C



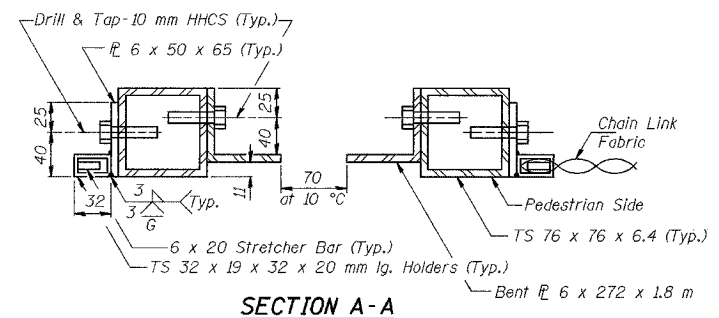
SECTION B-B



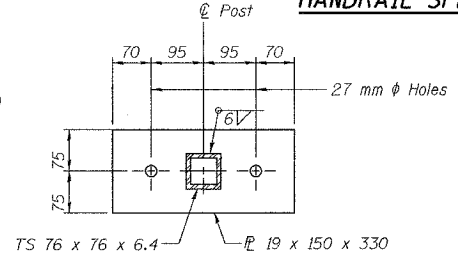
HANDRAIL DETAIL



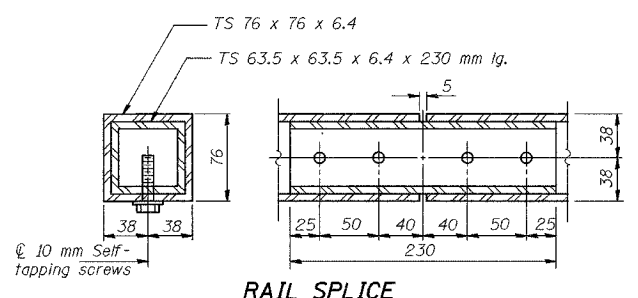
HANDRAIL SPLICE



SECTION A-A



TOP ANCHOR PLATE



RAIL SPLICE

BILL OF MATERIAL

Item	Unit	Quantity
Pedestrian Railing (Special)	m	145.0

ILLINOIS DEPARTMENT OF TRANSPORTATION
 F.A.I. ROUTE 80/94 (KINGERY EXPRESSWAY)
 UNDER WENTWORTH AVE
PEDESTRIAN RAILING
SECTION 2626.1B
COOK COUNTY
STATION 7 + 579.488
STRUCTURE NO. 016-2790
 DATE 07/05
AMERICAN
 CONSULTING ENGINEERS

FOR INFORMATION ONLY