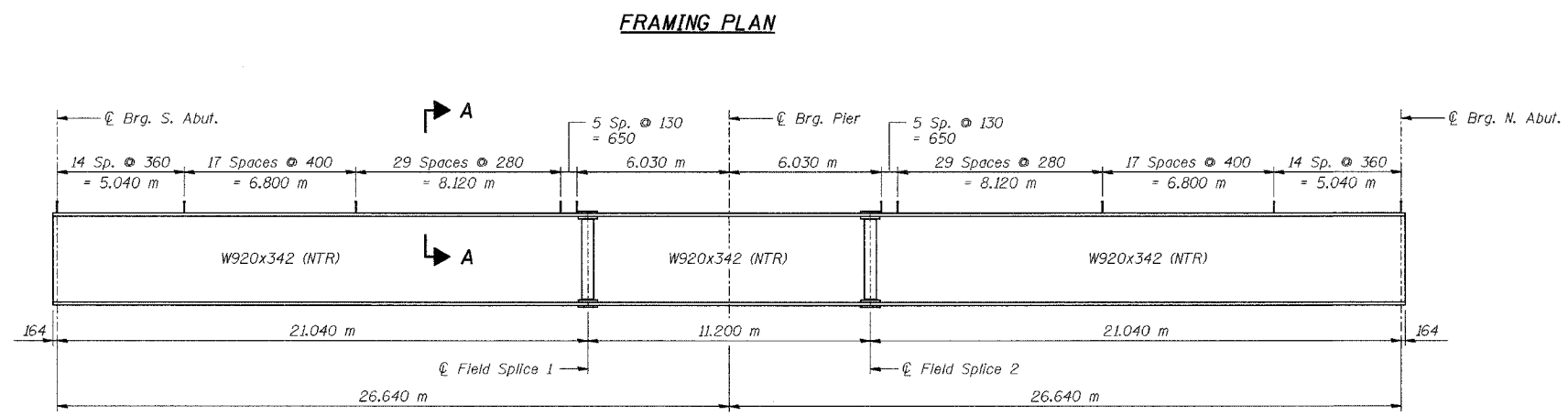
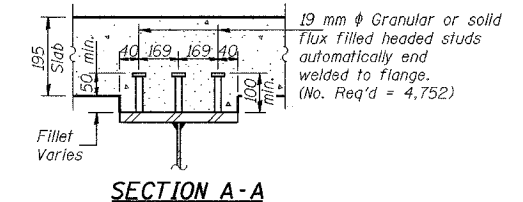


BEAM ELEVATION TABLE
(For Fabrication Use Only)

Beam	℄ Brg. S. Abut.	℄ Field Splice 1	℄ Brg. Pier	℄ Field Splice 2	℄ Brg. N. Abut.
1	189.658	189.531	189.458	189.386	188.968
2	189.658	189.533	189.461	189.389	188.974
3	189.699	189.577	189.506	189.434	189.021
4	189.740	189.620	189.549	189.478	189.067
5	189.771	189.653	189.583	189.513	189.105
6	189.803	189.687	189.617	189.547	189.140
7	189.803	189.689	189.620	189.551	189.146
8	189.772	189.660	189.591	189.523	189.120
9	189.740	189.631	189.563	189.495	189.094
10	189.700	189.592	189.525	189.458	189.059
11	189.658	189.553	189.486	189.420	189.023
12	189.658	189.555	189.489	189.423	189.029



DESIGNED	BPS
CHECKED	JDG
DRAWN	MJB
CHECKED	JDG

NOTES: All dimensions are in millimeters (mm) except as noted.
For diaphragms & field splice details, and table of moments & shears, See Sheet S-17.
NTR denotes notch toughness requirements.

ILLINOIS DEPARTMENT OF TRANSPORTATION
F.A.I. ROUTE 80/94 (KINGERY EXPRESSWAY)
UNDER WENTWORTH AVE
FRAMING PLAN
SECTION 2626.1B
COOK COUNTY
STATION 7+579.488
STRUCTURE NO. 016-2790
DATE 07/05
AMERICAN
CONSULTING ENGINEERS

FOR INFORMATION ONLY