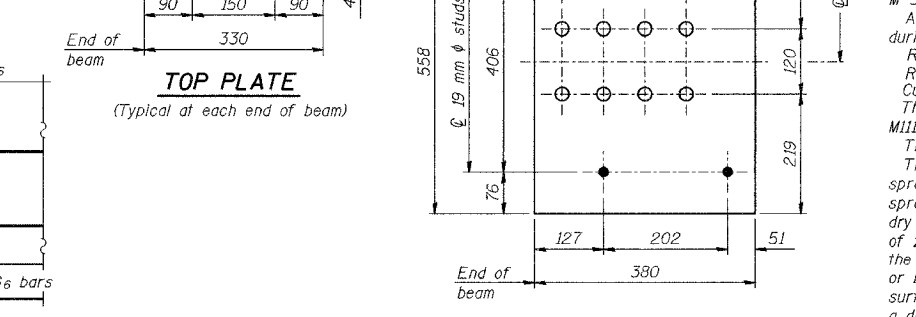
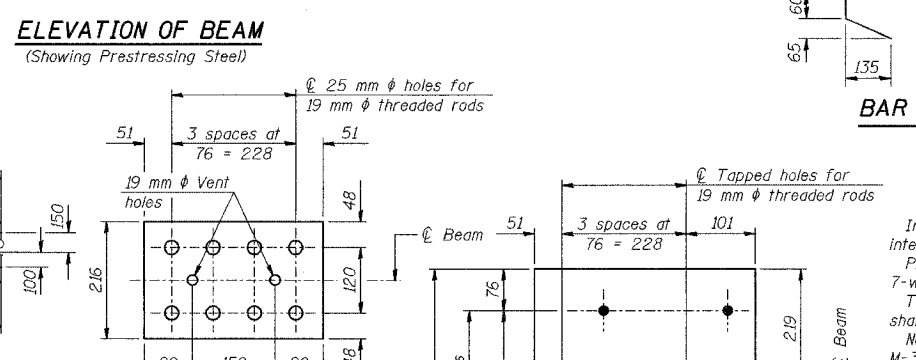
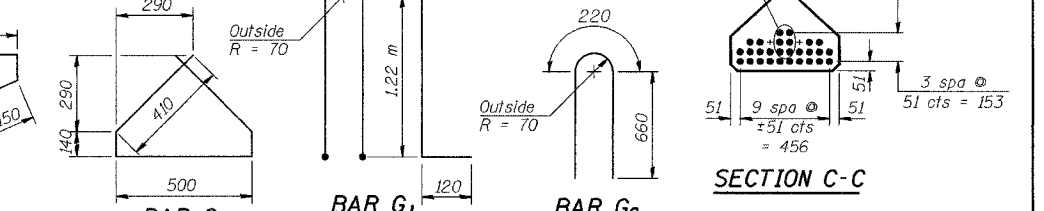
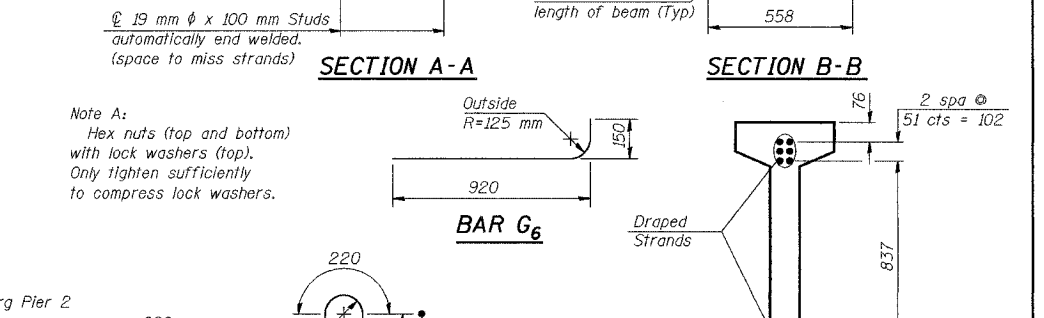
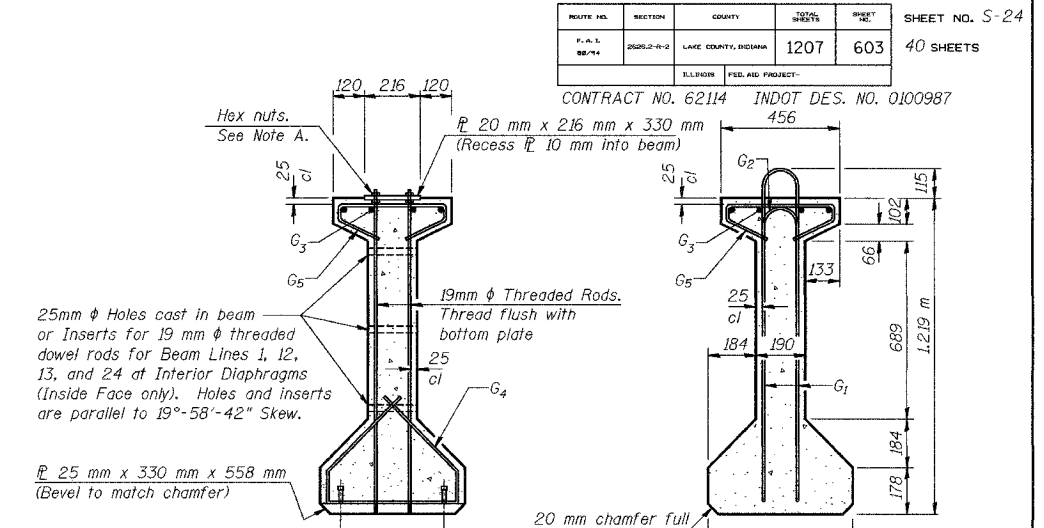


DESIGNED	BHS
CHECKED	KFA
DRAWN	MJB
CHECKED	GSP

PI-4-1219 (M) 7-15-05



(See bearing details for pintle hole locations at Pier 2)



*** BAR LIST**

Bar	No.	Size	Length (m)	Shape
G1	168	#10	2.90	U
G2	20	#10	1.54	U
G3	12	#25	9.30	U
G4	38	#10	1.60	U
G5	86	#10	0.82	U
G6	4	#25	1.14	U

NOTES

Inserts for 19 mm threaded dowel rods are to be two strut, coil type for interior I-Beams and single coil, flared loop type for exterior I-Beams. Prestressing steel shall be uncoated high strength, low relaxation 7-wire strand (Fu=1860 MPa). The nominal diameter shall be 12.7 mm and the nominal cross-sectional area shall be 98.71 mm². Non-prestressing steel shall conform to AASHTO designation M-31M or M-322M Grade 400. A minimum 60 mm diameter lifting pin shall be used to engage the lifting loops during handling. Required release strength, f'ci, shall be 35 MPa. Reinforcement bars designated (E) shall be epoxy coated. Cut G6 bars when necessary to maintain 40 mm clearance. The bottom plates and studs shall be galvanized according to AASHTO M111 and ASTM A385. Threaded rods shall be ASTM F 1554 Grade 380. The cut strands at each beam end shall be given two coats of zinc dust spray or paint meeting the requirements of ASTM A 780. The zinc dust spray or paint shall be applied before corrosion appears and allowed to dry according to the manufacturer's specifications prior to another coat of zinc. A concrete sealer meeting the requirements of Section 587 of the IDOT Standard Specifications shall be applied to all portions of the I-beam or Bulb-T beam, except the top surface of the top flange and the bottom surface of the bottom flange, starting at each beam end and extending out a distance of 1.22 m. The sealer shall be applied after visible crack growth has subsided. This work shall be performed by the producer and included with the cost of the beam. All dimensions are in millimeters (mm) except as noted. ***Measured along centerline of beam.

BILL OF MATERIAL

Item	Unit	Total
Furnishing and Erecting Precast Prestressed Concrete I-Beams, 1219 mm	m	608.4

ILLINOIS DEPARTMENT OF TRANSPORTATION
F.A.L. ROUTE 80/94 (BORMAN EXPRESSWAY)
OVER HOHMAN AVENUE

1219 mm PPC I-BEAM - SPAN 2
SECTION 2626.2-R-2
LAKE COUNTY, INDIANA
STATION 8+225.132
STRUCTURE NO. I-80-1-8459 (EB & WB)
DATE 09/05 (016-1001 & 016-1002)

AMERICAN
CONSULTING ENGINEERS