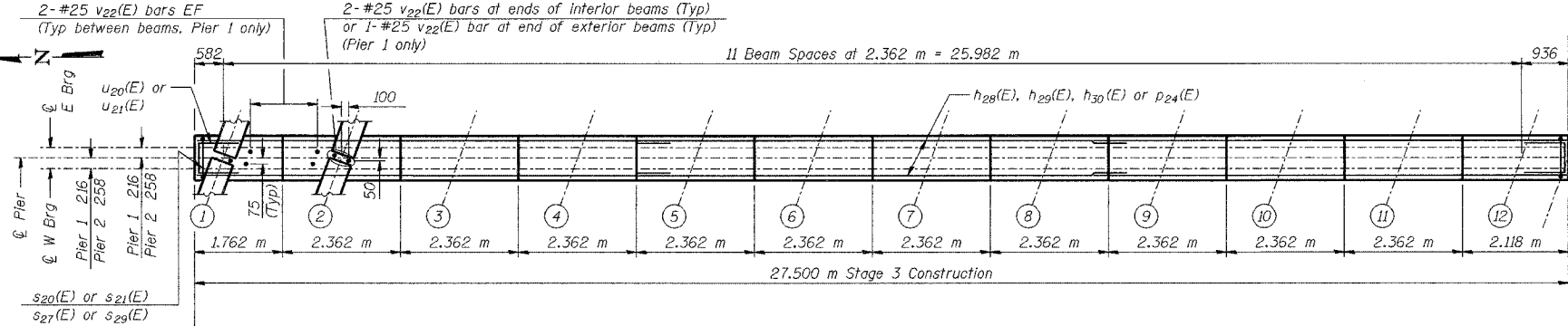
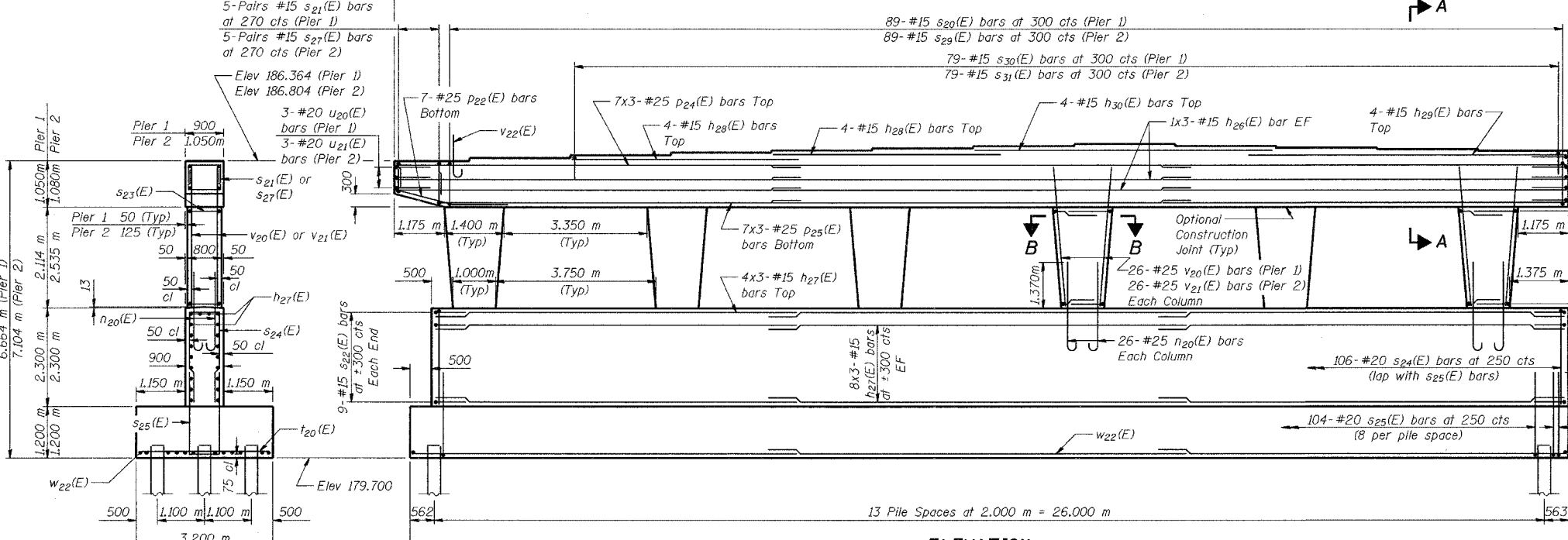


**BEARING SEAT ELEVATIONS**

Beam	Pier 1	Pier 2
1	186.364	186.804
2	186.438	186.878
3	186.511	186.951
4	186.585	187.025
5	186.648	187.088
6	186.707	187.147
7	186.744	187.184
8	186.764	187.204
9	186.744	187.184
10	186.721	187.161
11	186.690	187.130
12	186.652	187.092



**TOP PLAN**



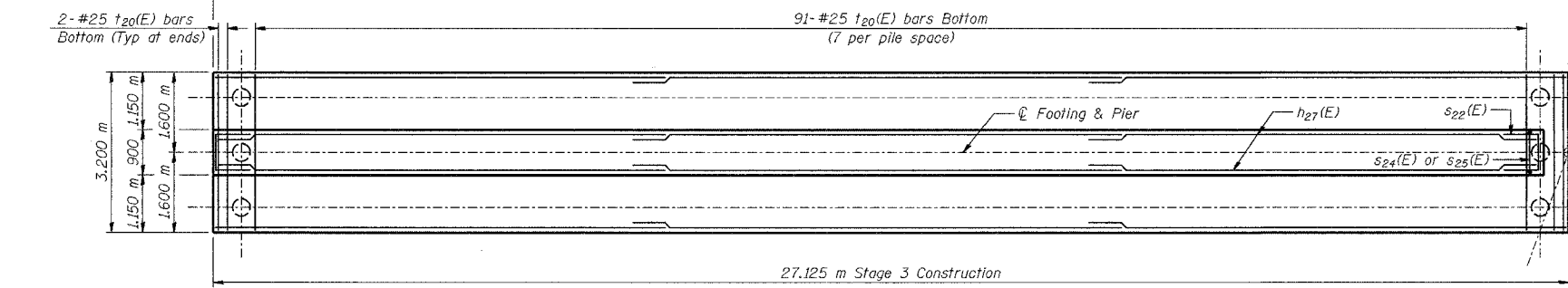
**ELEVATION (Looking East)**

**END VIEW**

**PILE DATA**

**PIER 1**  
 Type - 356  $\phi$  Metal Shell  
 Capacity - 500 kN  
 Est Length - 15.7 m  
 No Reqd - 42  
 Test Piles - 0

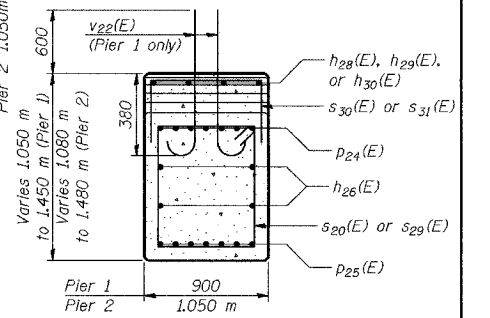
**PIER 2**  
 Type - 356  $\phi$  Metal Shell  
 Capacity - 500 kN  
 Est Length - 14.1 m  
 No Reqd - 42  
 Test Piles - 0



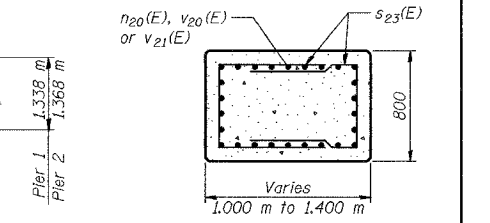
**FOOTING PLAN**

ROUTE NO.	SECTION	COUNTY	DATE	SHEET	SHEET NO. S-33
F.A.L.	2626.2-R-2	LAKE COUNTY, INDIANA	1207	612	40 SHEETS
BLISS	FED. AID PROJECT				

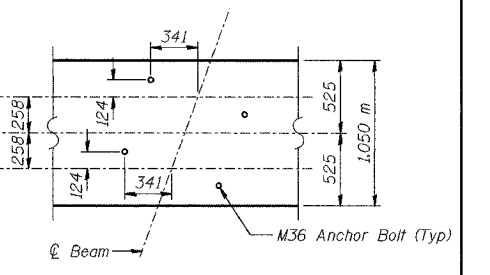
CONTRACT NO. 62114 INDOT DES. NO. 0100987



**SECTION A-A**



**SECTION B-B**



**ANCHOR BOLT LAYOUT (Pier 2)**

**NOTES:**  
 See Sheet No S-19 for Anchor Bolt Layout for Pier 1.  
 See Sheet No S-33 for Bill of Material.  
 Space reinforcement in cap to miss dowel bars.  
 Pour steps monolithically with cap.  
 Reinforcement bars designated (E) shall be epoxy coated.  
 Bars indicated thus 20 x 3-#15 etc. indicates 20 lines of bars with 3 lengths per line.  
 All dimensions are in millimeters (mm) except as noted.

DESIGNED	BHS
CHECKED	KFA
DRAWN	MJB
CHECKED	GSP

**MINIMUM BAR LAPS**

#15 bars = 640  
 #20 bars = 790  
 #25 bars = 1320

**LEGEND**

EF - Each Face

ILLINOIS DEPARTMENT OF TRANSPORTATION  
 F.A.L. ROUTE 80/94 (BORMAN EXPRESSWAY)  
 OVER HORMAN AVENUE

**PIERS 1 AND 2 - WESTBOUND**  
**SECTION 2626.2-R-2**  
 LAKE COUNTY, INDIANA  
 STATION 8+225.132  
 STRUCTURE NO. I-80-1-8459 (EB & WB)  
 DATE 09/05 (016-1001 & 016-1002)

**AMERICAN**  
 CONSULTING ENGINEERS