

BORING NO. AB-07 (1 OF 2)

BORING NO. AB-07 (2 OF 2)

BORING NO. AB-08 (1 OF 2)

BORING LOG AB-07 Page 1 of 2

Wang Engineering, INC.
Consulting Geotechnical and Environmental Engineers
wangeng@wangeng.com
100 Fairbank Street
Addison, IL 60101
Telephone: 630 458-0700
Fax: 630 458-0900

WEI Job No.: 255-08-01
Client: American Consulting Engineers
Project: FAI 80/94, I-294 to US 41
Location: s13 T36N R10W & s29 R15E T36N

Datum: NGVD
Elevation: 186.45 m
North: 545382.06 m
East: 367610.93 m
Station: 8+189.36
Offset: 16.41 LT

BORING LOG AB-07 Page 2 of 2

Wang Engineering, INC.
Consulting Geotechnical and Environmental Engineers
wangeng@wangeng.com
100 Fairbank Street
Addison, IL 60101
Telephone: 630 458-0700
Fax: 630 458-0900

WEI Job No.: 255-08-01
Client: American Consulting Engineers
Project: FAI 80/94, I-294 to US 41
Location: s13 T36N R10W & s29 R15E T36N

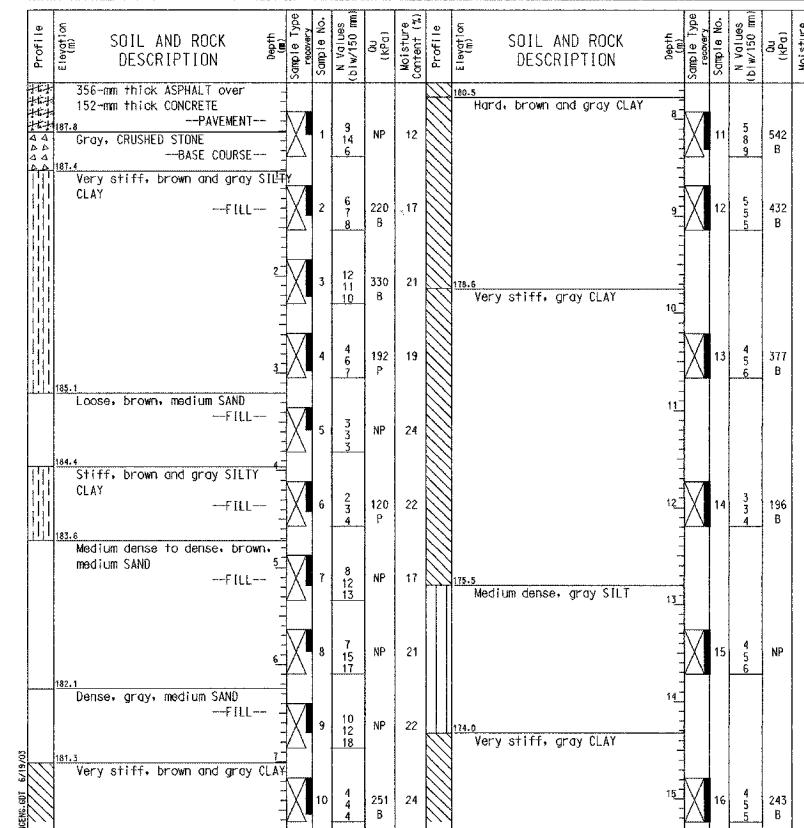
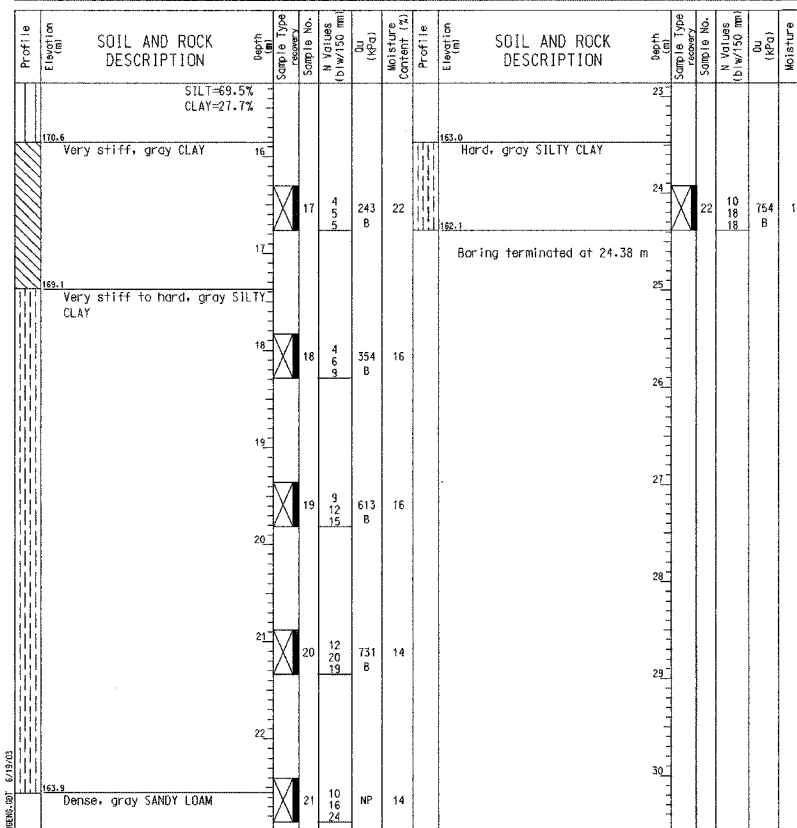
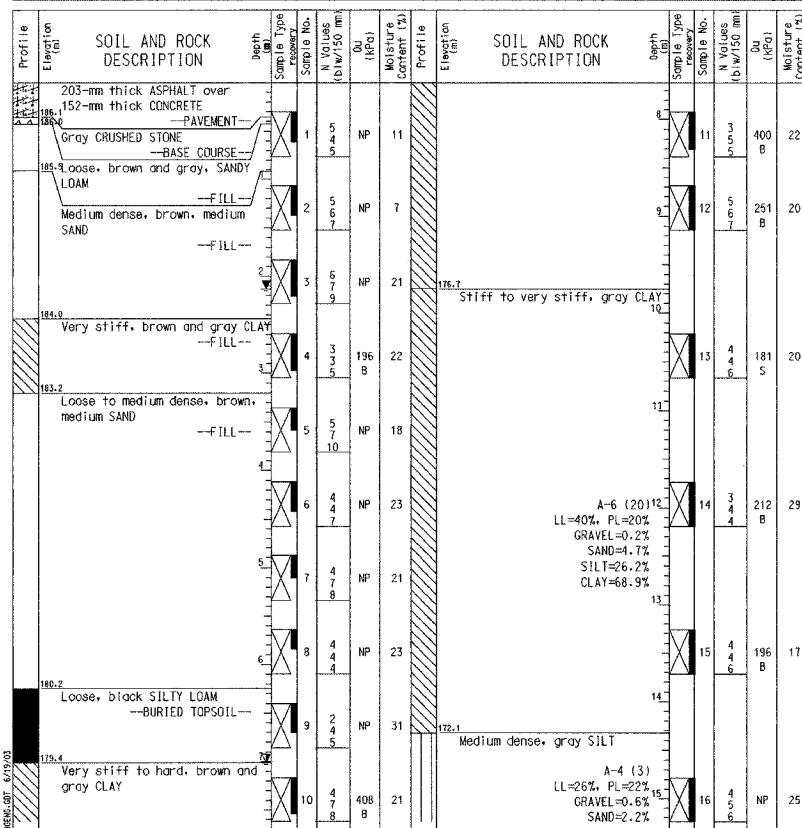
Datum: NGVD
Elevation: 186.45 m
North: 545382.06 m
East: 367610.93 m
Station: 8+189.36
Offset: 16.41 LT

BORING LOG AB-08 Page 1 of 2

Wang Engineering, INC.
Consulting Geotechnical and Environmental Engineers
wangeng@wangeng.com
100 Fairbank Street
Addison, IL 60101
Telephone: 630 458-0700
Fax: 630 458-0900

WEI Job No.: 255-08-01
Client: American Consulting Engineers
Project: FAI 80/94, I-294 to US 41
Location: s13 T36N R10W & s29 R15E T36N

Datum: NGVD
Elevation: 188.31 m
North: 545359.39 m
East: 367674.07 m
Station: 8+256.45
Offset: 16.17 LT



GENERAL NOTES

Begin Drilling 04-03-2002 Complete Drilling 04-03-2002

Drilling Contractor TSC Drill Rig CME 75

Driller C&J Logger H. Suhail Checked by N. Davis

Drilling Method Mud Rotary; Grouted after final water reading

WATER LEVEL DATA

White Drilling

At Completion of Drilling 2.13 m

Time After Drilling 24 hours

Depth to Water 7.01 m

The stratification lines represent the approximate boundary between soil types; the actual transition may be gradual.

GENERAL NOTES

Begin Drilling 04-03-2002 Complete Drilling 04-03-2002

Drilling Contractor TSC Drill Rig CME 75

Driller C&J Logger H. Suhail Checked by N. Davis

Drilling Method Mud Rotary; Grouted after final water reading

WATER LEVEL DATA

White Drilling

At Completion of Drilling 2.13 m

Time After Drilling 24 hours

Depth to Water 7.01 m

The stratification lines represent the approximate boundary between soil types; the actual transition may be gradual.

GENERAL NOTES

Begin Drilling 04-04-2002 Complete Drilling 04-05-2002

Drilling Contractor TSC Drill Rig CME 75

Driller C&J Logger H. Suhail Checked by N. Davis

Drilling Method Mud Rotary; Grouted upon completion

WATER LEVEL DATA

White Drilling

At Completion of Drilling 24.08 m

Time After Drilling -- hours

Depth to Water -- m

The stratification lines represent the approximate boundary between soil types; the actual transition may be gradual.

DESIGNED	BHS
CHECKED	KFA
DRAWN	MJB
CHECKED	GSP

ILLINOIS DEPARTMENT OF TRANSPORTATION
F.A.L. ROUTE 80/94 (BORMAN EXPRESSWAY)
OVER HOHMAN AVENUE

BORING LOGS (1 OF 4)
SECTION 2626.2-R-2
LAKE COUNTY, INDIANA
STATION 8+225.132
STRUCTURE NO. I-80-1-8459 (EB & WB)
DATE 09/05 (016-1001 & 016-1002)

AMERICAN
CONSULTING ENGINEERS