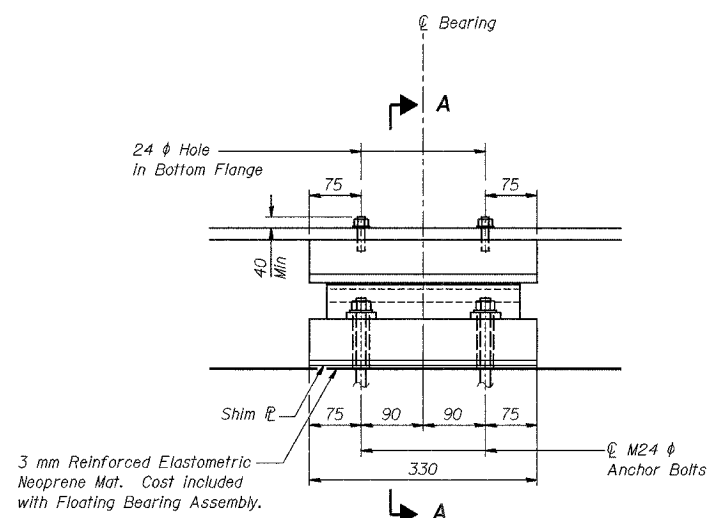
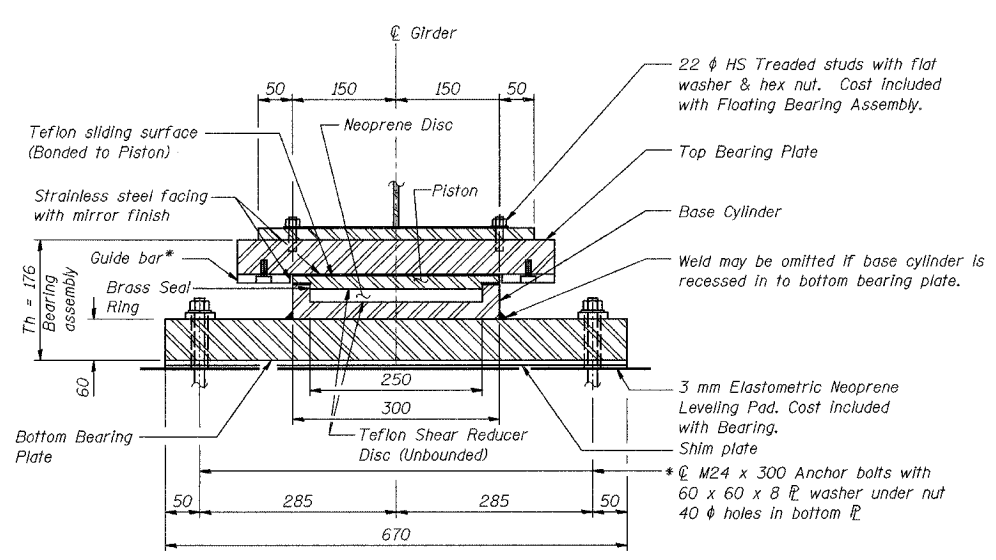


ROUTE NO.	SECTION	COUNTY	SHEETS	SHEET	SHEET NO. S-42
F.A.I.	2626.2-R-1	LAKE COUNTY, INDIANA	1207	661	72 SHEETS
DATE	07/05	PROJECT	CONTRACT NO. 62114 INDOT DES. NO. 0100987		



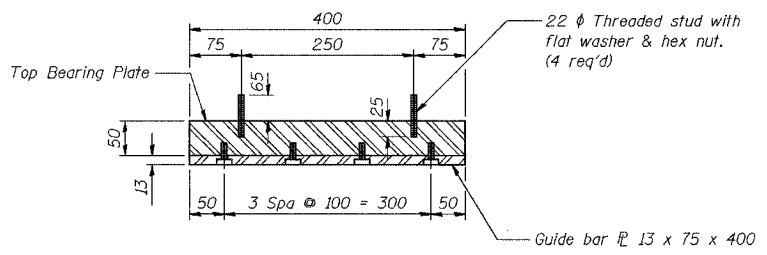
**ELEVATION**



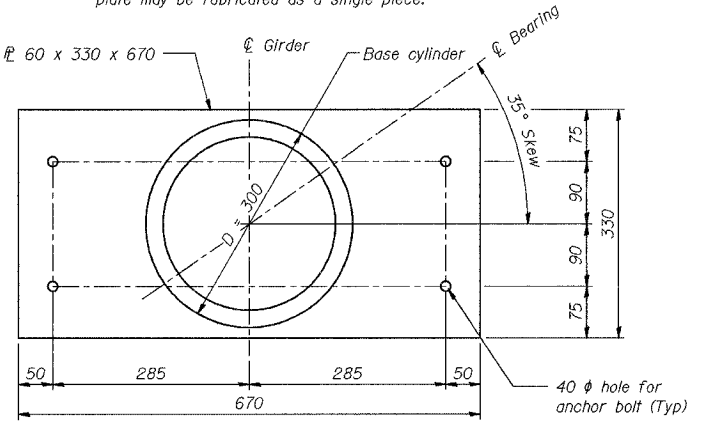
**SECTION A-A**

**FLOATING BEARING AT PIER 1**

\* As alternates to bolted connection shown, the guide bars may be connected to the top bearing plate by groove welds or the guide bars and top bearing plate may be fabricated as a single piece.

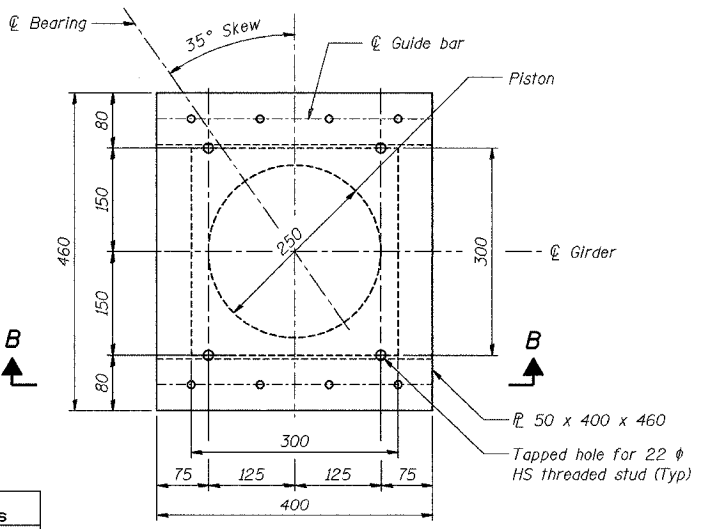


**SECTION B-B**



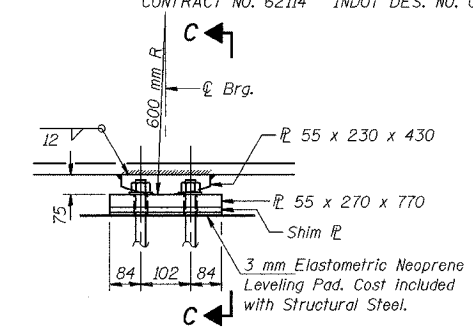
**BOTTOM BEARING P AND CYLINDER PLAN**

Max expansion length = 30 m  
 Total dead load + live load without impact = 1157 kN  
 Lateral load = 231 kN  
 Rotation capacity = 0.025 radians

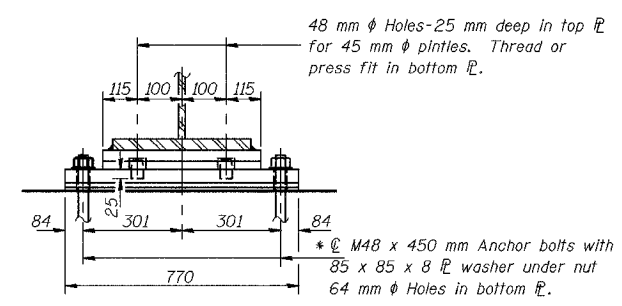


**TOP BEARING P AND PISTON PLAN**

DESIGNED	BHS
CHECKED	KFA
DRAWN	MJB
CHECKED	GSP

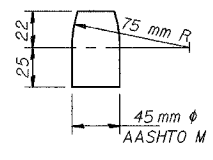


**ELEVATION AT PIER**



**SECTION C-C**

**FIXED BEARING AT PIER 2**



**PINTLE**

Notes: Anchor bolts at fixed bearings may be built into the masonry. See Sheet S-47 for Anchor Bolt installation. All dimensions are in millimeters (mm) except as noted.

**BILL OF MATERIAL**

Item	Unit	Total
* Furnishing Floating Bearings, Guided Expansion, 1250 kN	Each	28

ILLINOIS DEPARTMENT OF TRANSPORTATION  
 F.A.I. ROUTE 80/94 (BORMAN EXPRESSWAY)  
 OVER LITTLE CALUMET RIVER & N.I.C.T.D. R.O.W.

**BEARING DETAILS (1 OF 5)**  
**SECTION 2626.2-R-1**  
**LAKE COUNTY, INDIANA**  
**STATION 8+470.000**  
**STRUCTURE NO. I-80-1-8460 (EB & WB)**  
 DATE 07/05 (016-1003 & 016-1004)

**AMERICAN**  
 CONSULTING ENGINEERS

**\* FURNISHING BEARINGS NOT INCLUDED IN THIS CONTRACT**