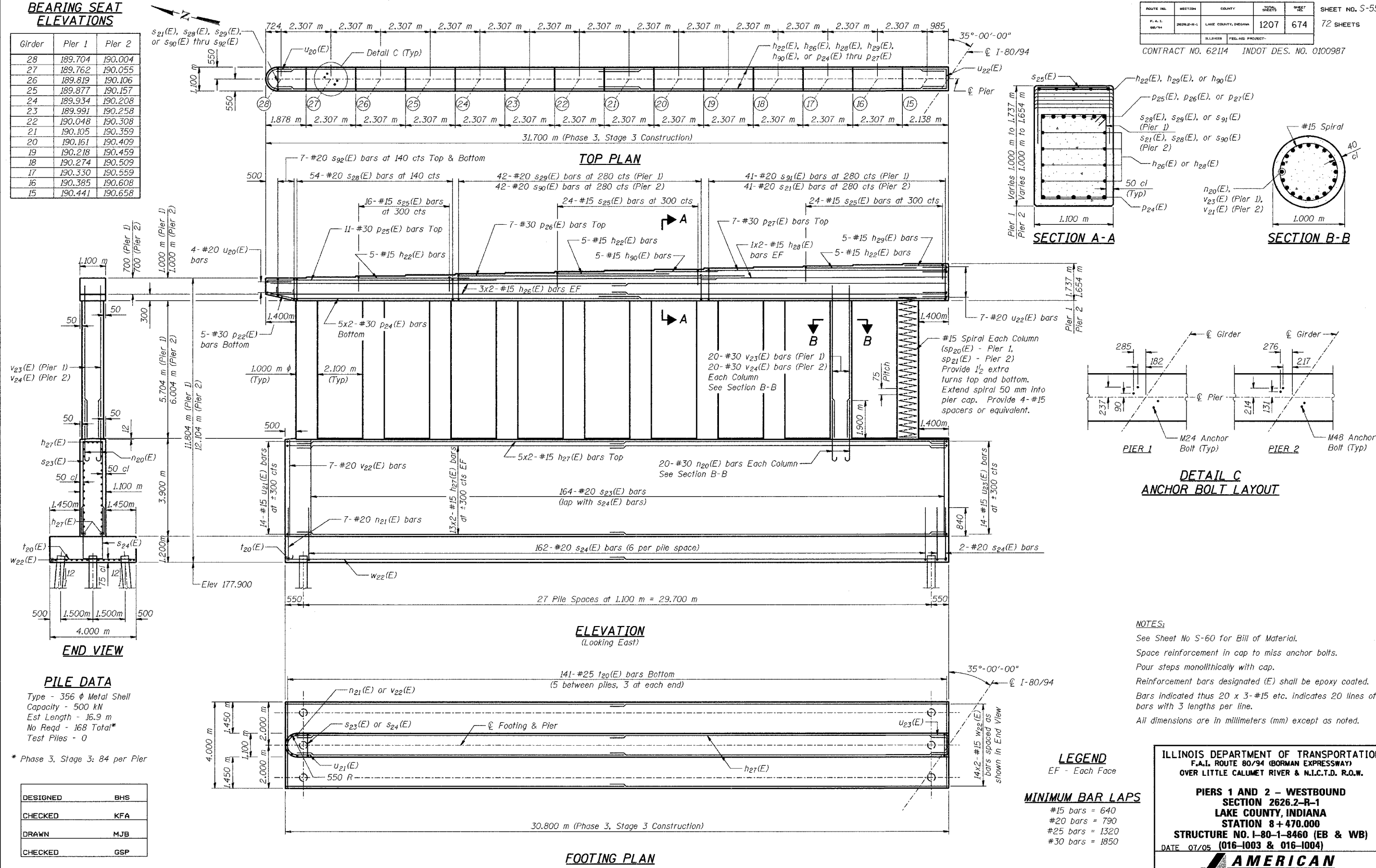


BEARING SEAT ELEVATIONS

Girder	Pier 1	Pier 2
28	189.704	190.004
27	189.762	190.055
26	189.819	190.106
25	189.877	190.157
24	189.934	190.208
23	189.991	190.258
22	190.048	190.308
21	190.105	190.359
20	190.161	190.409
19	190.218	190.459
18	190.274	190.509
17	190.330	190.559
16	190.385	190.608
15	190.441	190.658

ROUTE NO.	SECTION	COUNTY	SHEET	SHEET NO. S-55
F.A.L. 80/94	2626.2-R-1	LAKE COUNTY, INDIANA	1207	674
CONTRACT NO. 62114				INDOT DES. NO. 0100987



PILE DATA
 Type - 356 ϕ Metal Shell
 Capacity - 500 kN
 Est Length - 16.9 m
 No Reqd - 168 Total*
 Test Piles - 0
 * Phase 3, Stage 3; 84 per Pier

DESIGNED	BHS
CHECKED	KFA
DRAWN	MJB
CHECKED	GSP

NOTES:
 See Sheet No S-60 for Bill of Material.
 Space reinforcement in cap to miss anchor bolts.
 Pour steps monolithically with cap.
 Reinforcement bars designated (E) shall be epoxy coated.
 Bars indicated thus 20 x 3-#15 etc. indicates 20 lines of bars with 3 lengths per line.
 All dimensions are in millimeters (mm) except as noted.

LEGEND
 EF - Each Face
MINIMUM BAR LAPS
 #15 bars = 640
 #20 bars = 790
 #25 bars = 1320
 #30 bars = 1850

ILLINOIS DEPARTMENT OF TRANSPORTATION
 F.A.L. ROUTE 80/94 (BORMAN EXPRESSWAY)
 OVER LITTLE CALUMET RIVER & N.I.C.T.D. R.O.W.
PIERS 1 AND 2 - WESTBOUND
SECTION 2626.2-R-1
LAKE COUNTY, INDIANA
STATION 8+470.000
STRUCTURE NO. I-80-1-8460 (EB & WB)
 DATE 07/05 (016-1003 & 016-1004)
AMERICAN
 CONSULTING ENGINEERS