

BORING NO. AB-17 (3 OF 3)

BORING NO. AB-18 (1 OF 2)

BORING NO. AB-18 (2 OF 2)

BORING LOG AB-17 Page 3 of 3

Wang Engineering, INC. Datum: NGVD
 Consulting Geotechnical and Environmental Engineers
 wangeng3@wangeng.com
 100 Fairbank Street
 Addison, IL 60101
 Telephone: 630 458-0700
 Fax: 630 458-0900

WEI Job No.: 255-08-01
 Client: American Consulting Engineers
 Project: FAI 80/94, I-294 to US 41
 Location: s13 T36N R10W & s29 R15E T36N

Elevation: 191.12 m
 North: 545266.08 m
 East: 367829.44 m
 Station: 8+434.07
 Offset: 19.82 RT

BORING LOG AB-18 Page 1 of 2

Wang Engineering, INC. Datum: NGVD
 Consulting Geotechnical and Environmental Engineers
 wangeng3@wangeng.com
 100 Fairbank Street
 Addison, IL 60101
 Telephone: 630 458-0700
 Fax: 630 458-0900

WEI Job No.: 255-08-01
 Client: American Consulting Engineers
 Project: FAI 80/94, I-294 to US 41
 Location: s13 T36N R10W & s29 R15E T36N

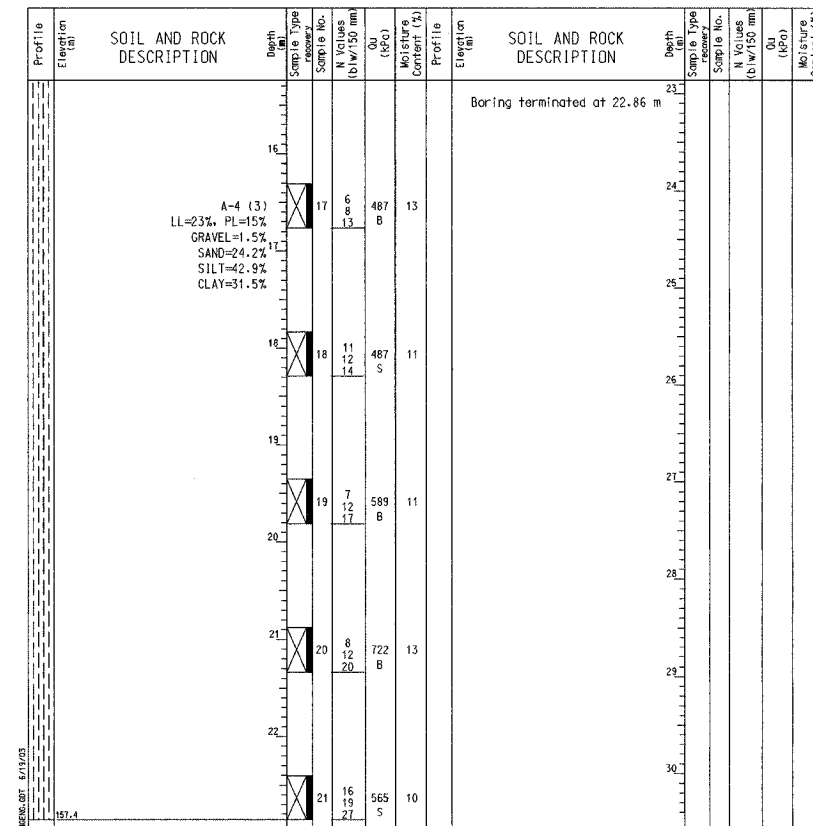
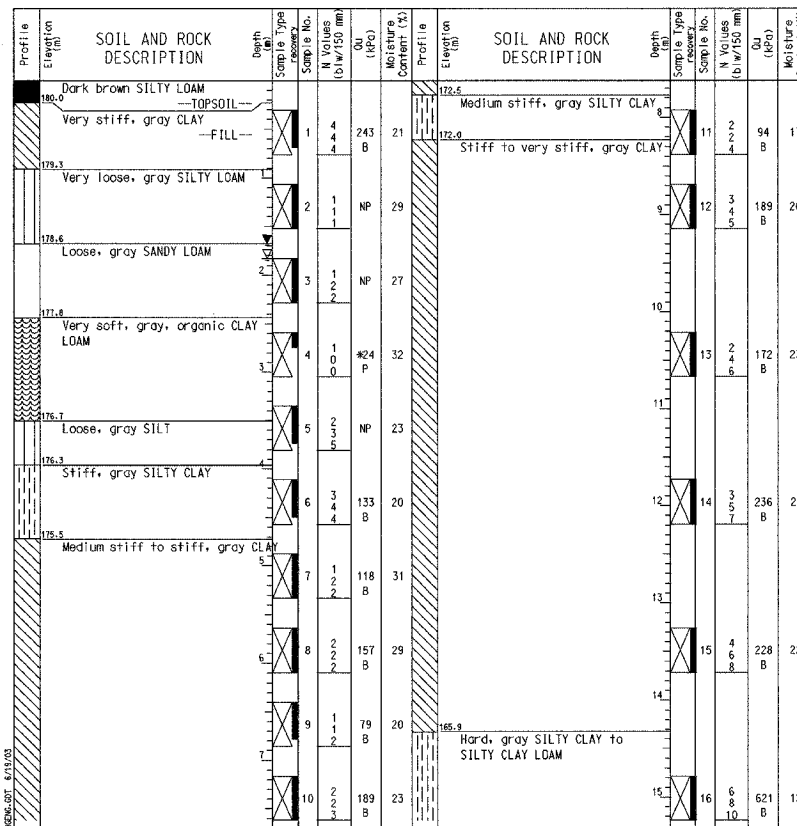
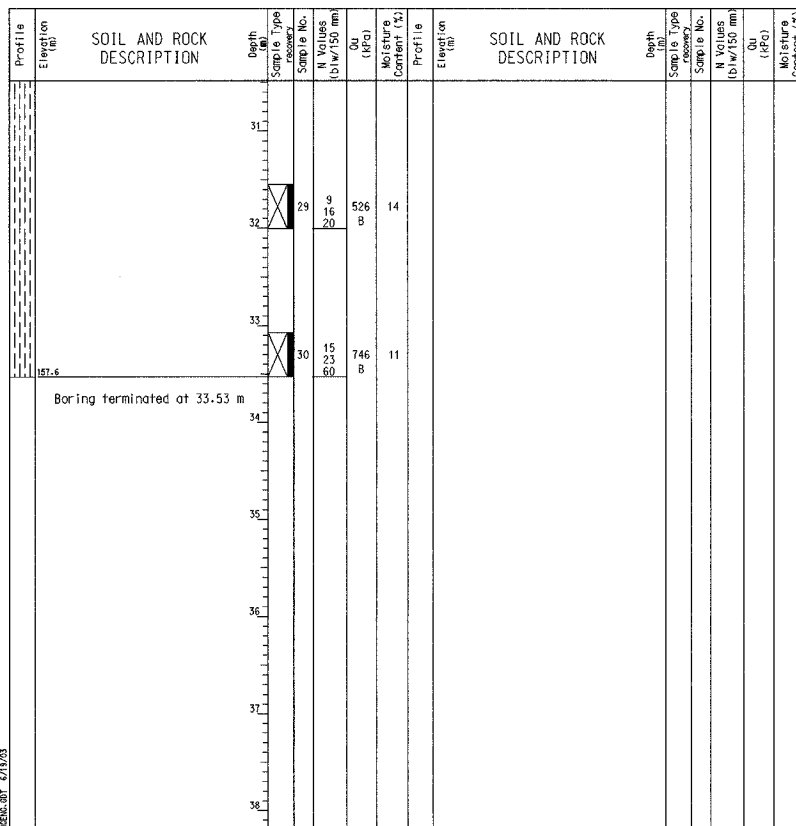
Elevation: 180.23 m
 North: 545239.56 m
 East: 367893.57 m
 Station: 8+503.38
 Offset: 23.36 RT

BORING LOG AB-18 Page 2 of 2

Wang Engineering, INC. Datum: NGVD
 Consulting Geotechnical and Environmental Engineers
 wangeng3@wangeng.com
 100 Fairbank Street
 Addison, IL 60101
 Telephone: 630 458-0700
 Fax: 630 458-0900

WEI Job No.: 255-08-01
 Client: American Consulting Engineers
 Project: FAI 80/94, I-294 to US 41
 Location: s13 T36N R10W & s29 R15E T36N

Elevation: 180.23 m
 North: 545239.56 m
 East: 367893.57 m
 Station: 8+503.38
 Offset: 23.36 RT



GENERAL NOTES

Begin Drilling 01-24-2002 Complete Drilling 01-25-2002
 Drilling Contractor TSC Drill Rig CME 75
 Driller C.W. Logger B. Fugiel checked by N. Davis
 Drilling Method Mud Rotary; Grouted upon completion

WATER LEVEL DATA

While Drilling
 At Completion of Drilling
 Time After Drilling hours
 Depth to Water m

The stratification lines represent the approximate boundary between soil types; the actual transition may be gradual.

GENERAL NOTES

Begin Drilling 01-08-2002 Complete Drilling 01-08-2002
 Drilling Contractor TSC Drill Rig B-61
 Driller GAD Logger B. Fugiel checked by B. Fugiel
 Drilling Method Mud Rotary; Grouted after final water reading

WATER LEVEL DATA

While Drilling 1.83 m
 At Completion of Drilling 1.68 m
 Time After Drilling 24 hours
 Depth to Water 1.68 m

The stratification lines represent the approximate boundary between soil types; the actual transition may be gradual.

GENERAL NOTES

Begin Drilling 01-08-2002 Complete Drilling 01-08-2002
 Drilling Contractor TSC Drill Rig B-61
 Driller GAD Logger B. Fugiel checked by B. Fugiel
 Drilling Method Mud Rotary; Grouted after final water reading

WATER LEVEL DATA

While Drilling 1.83 m
 At Completion of Drilling 1.68 m
 Time After Drilling 24 hours
 Depth to Water 1.68 m

The stratification lines represent the approximate boundary between soil types; the actual transition may be gradual.

DESIGNED	BHS
CHECKED	KFA
DRAWN	CAK/MJB
CHECKED	GSP

ILLINOIS DEPARTMENT OF TRANSPORTATION
 F.A.L. ROUTE 80/94 (BORMAN EXPRESSWAY)
 OVER LITTLE CALUMET RIVER & N.I.C.T.D. R.O.W.

BORING LOGS (5 OF 10)
SECTION 2626.2-R-1
LAKE COUNTY, INDIANA
STATION 8+470.000
STRUCTURE NO. I-80-1-8460 (EB & WB)
 DATE 07/05 (016-1003 & 016-1004)

AMERICAN CONSULTING ENGINEERS