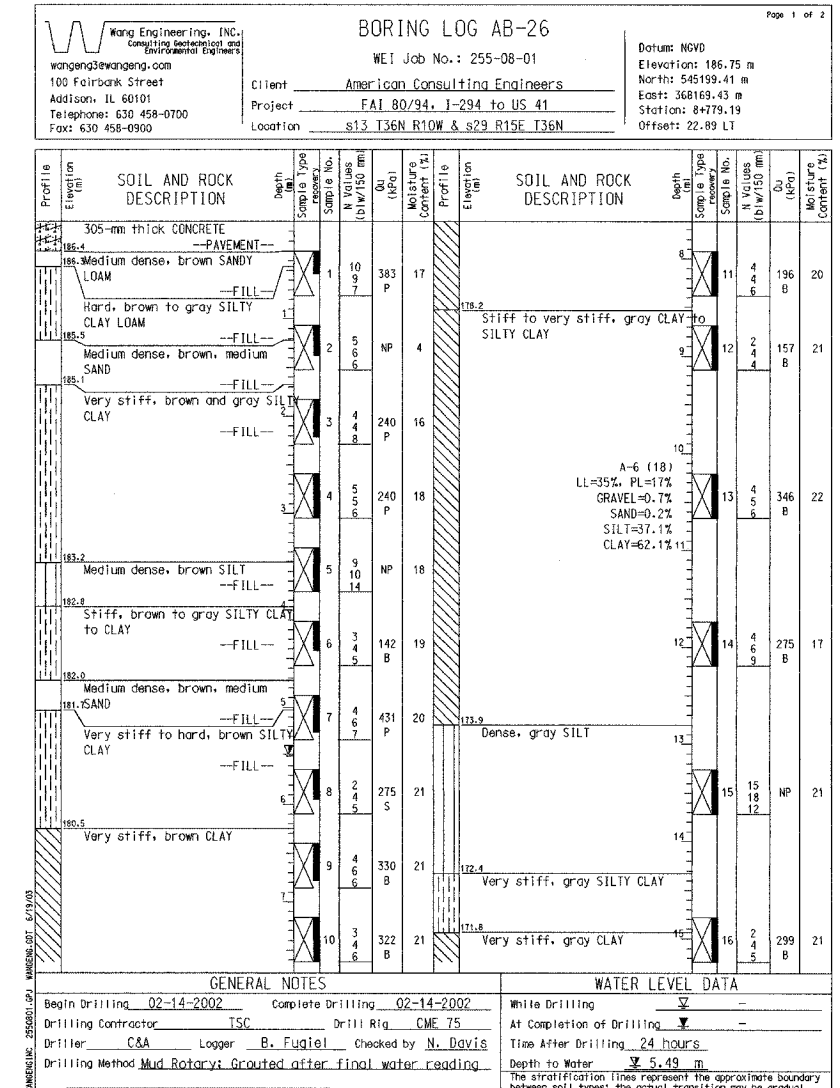
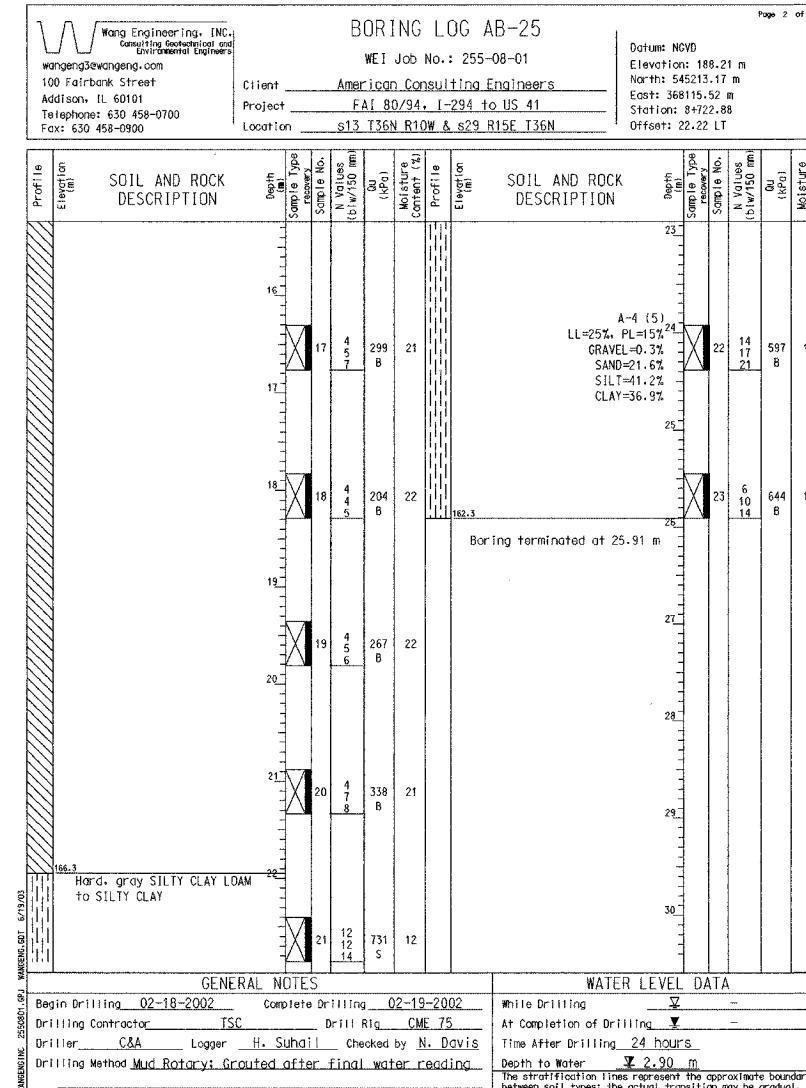
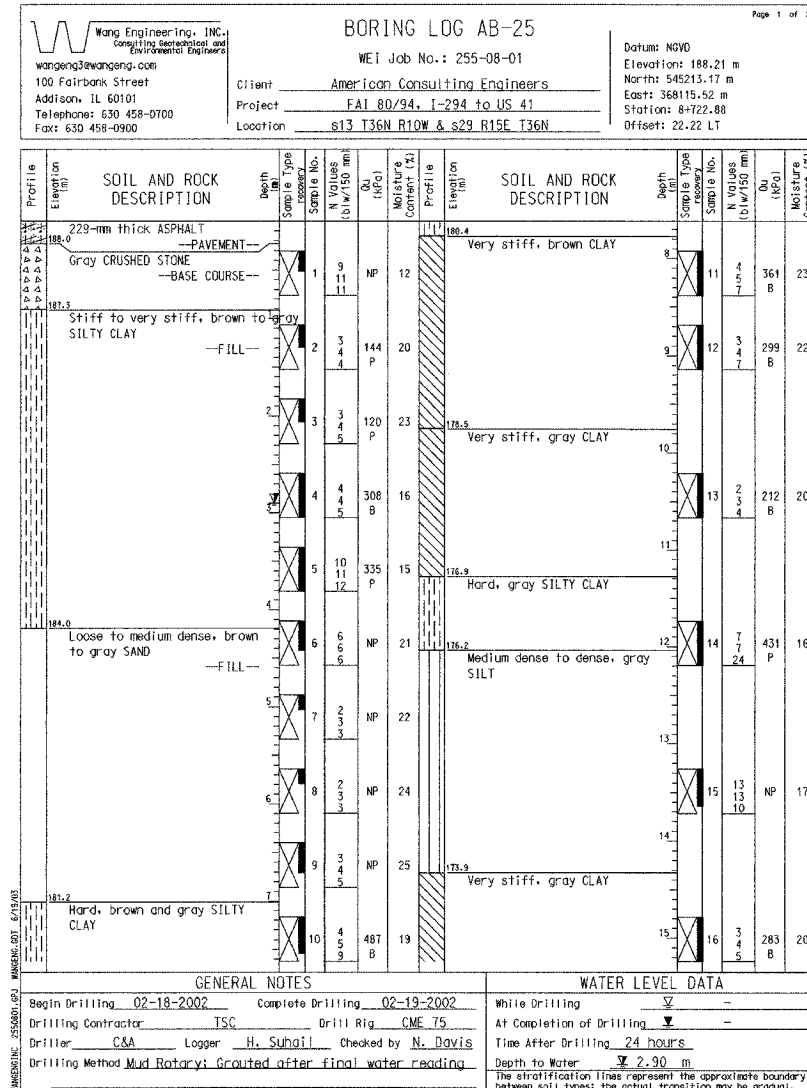


BORING NO. AB-25 (1 OF 2)

BORING NO. AB-25 (2 OF 2)

BORING NO. AB-26 (1 OF 2)



DESIGNED	BHS
CHECKED	KFA
DRAWN	MJB
CHECKED	GSP

ILLINOIS DEPARTMENT OF TRANSPORTATION
 F.A.L. ROUTE 80/94 (BORMAN EXPRESSWAY)
 OVER HARRISON AVENUE

BORING LOGS (1 OF 4)
SECTION 2626.2-R-2
LAKE COUNTY, INDIANA
STATION 8 + 754.874
STRUCTURE NO. I-80-1-8461 (EB & WB)
 DATE 09/05 (016-1005 & 016-1006)

AMERICAN
 CONSULTING ENGINEERS