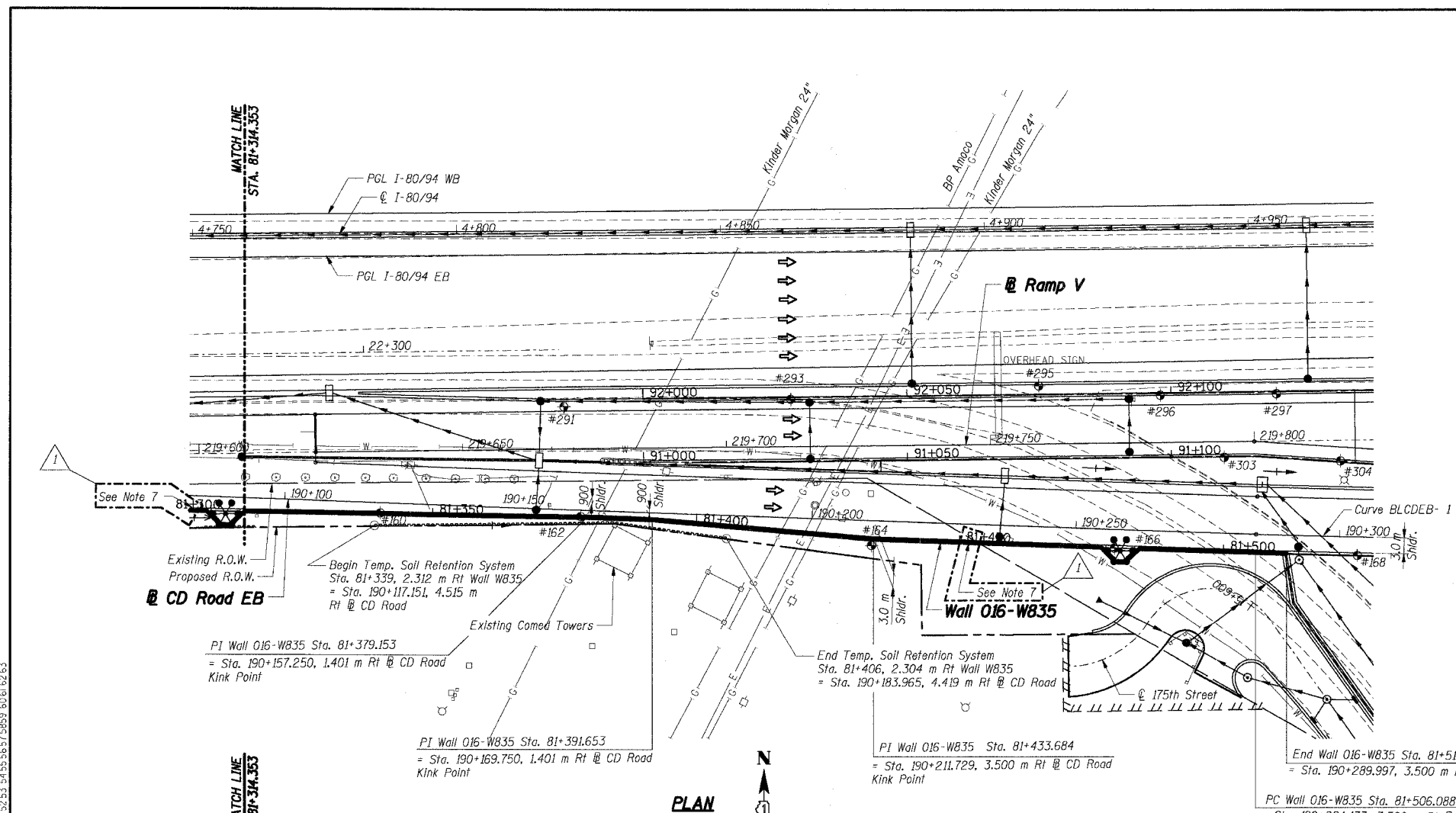


F.A.I. RTE.	SECTION	COUNTY	TOTAL SHEETS	SHEET NO.
80/94	2626.2-R-2	COOK	1207	722
STA.		TO STA.		
FED. ROAD DIST. NO.		ILLINOIS FED. AID PROJECT		

CONTRACT NO. 62114



PROP. CURVE BLCDEB-1
 PI STA = 190+324.703
 $\Delta = 2^\circ 39' 22''$ (LT)
 R = 1,750.000 m
 T = 40.570 m
 L = 81.125 m
 E = 0.470 m
 P.C. STA = 190+284.133
 P.T. STA = 190+365.258

PROP. CURVE W835-1
 PI STA = 81+546.739
 $\Delta = 2^\circ 39' 22''$ (LT)
 R = 1,753.500 m
 T = 40.651 m
 L = 81.287 m
 E = 0.471 m
 P.C. STA = 81+506.088
 P.T. STA = 81+587.376

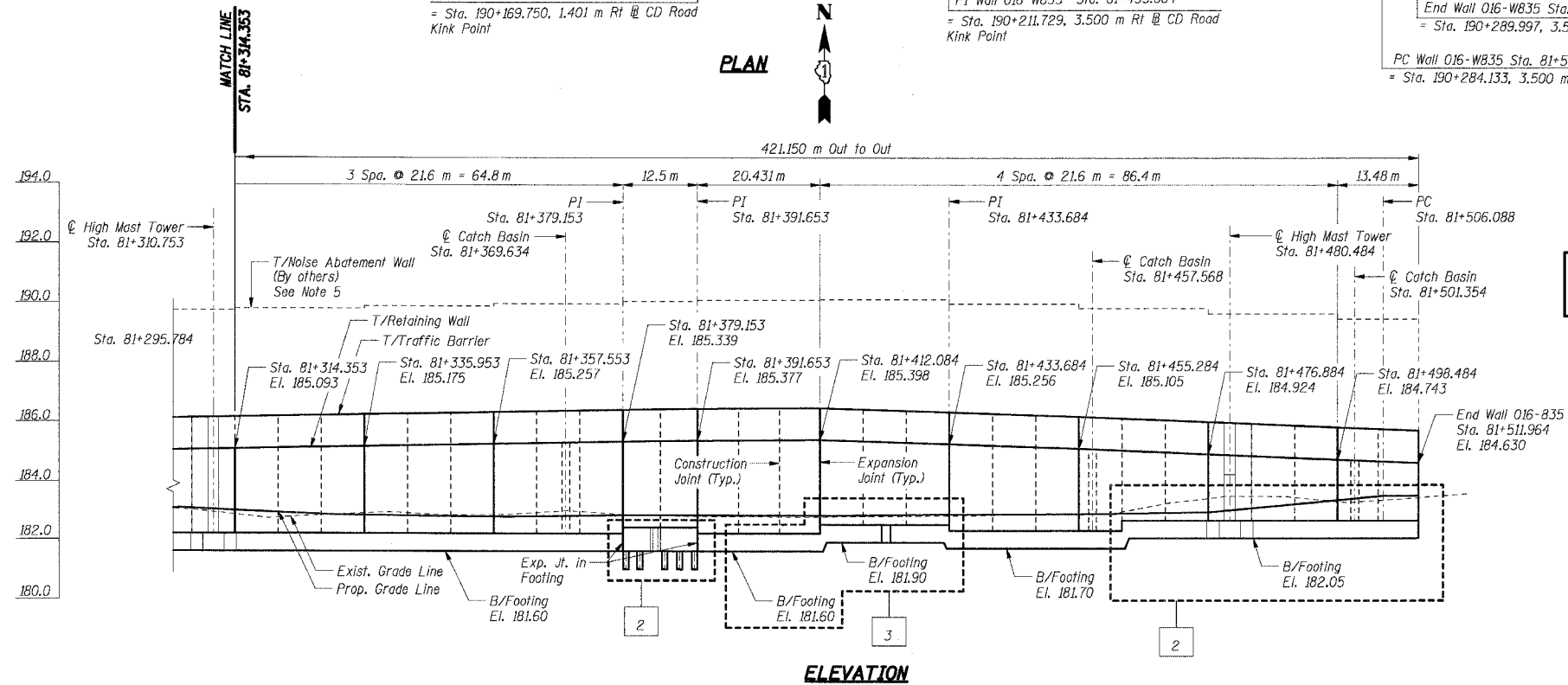
LEGEND:

- #5 Soil Boring
- High Mast Light Tower (by others)
- Existing Storm Sewer
- Proposed Storm Sewer
- Existing Combined Sewer
- Proposed Catch Basin
- Drainage Structure
- Proposed Retaining Wall
- Proposed Pavement
- Temporary Soil Retention System
- Kinder Morgan
- Exist. Gas Main (to remain)
- Water Main (to be relocated)
- Electric (to be relocated)
- Telephone (to be relocated)
- Cable Television

THIS SHEET FOR INFORMATION ONLY

Notes:

1. All dimensions are measured along front face of retaining wall.
2. Wall alignment offsets are referenced to front face of wall.
3. Work this sheet with RW835-2 and RW835-3.
4. See Sht. RW835-3 for Index of Sheets, General Notes, and Bill of Materials.
5. Noise abatement wall will be furnished and installed by others as part of future mainline reconstruction contract.
6. See Sht. RW835-3 for Temporary Soil Retention System details.
7. Provide sleeve for 50 mm diameter line to Chicago Heights water main air/vacuum release valve. Sleeve shall be 75 mm diameter located in wall stem. Location shall be determined by the Engineer in coordination with City of Chicago Heights.



ELEVATION

SHT. RW835-2 OF 34

REVISIONS	
NAME	DATE
MJK	4/5/04
MJK	6/21/04
PA	8/3/04

ILLINOIS DEPARTMENT OF TRANSPORTATION
 F.A.I. ROUTE 80/94 (KINGERY EXPRESSWAY)
 IL ROUTE 83 RECONSTRUCTION
 RETAINING WALL - STRUCTURE NO. 016-W835
 SECTION 2425 R-3 & 2425-711B
 COOK COUNTY

GENERAL PLAN & ELEVATION II

DATE: 02/20/2004
 DRAWN BY: SC
 CHECKED BY: MJK
TENG
 TENG & ASSOCIATES, INC.
 ENGINEERS/ARCHITECTS/PLANNERS
 CHICAGO, ILLINOIS

T:\DOCUMENTS\13322428 7-4-2005 13:32:28
 T:\DOCUMENTS\13322428\STRUCTURE\DRAWINGS\02A.DWG
 1 2 3 4 5 6 7 8 9 10 11 12 13 14 15 16 17 18 19 20 21 22 23 24 25 26 27 28 29 30 31 32 33 34 35 36 37 38 39 40 41 42 43 44 45 46 47 48 49 50 51 52 53 54 55 56 57 58 59 60 61 62 63