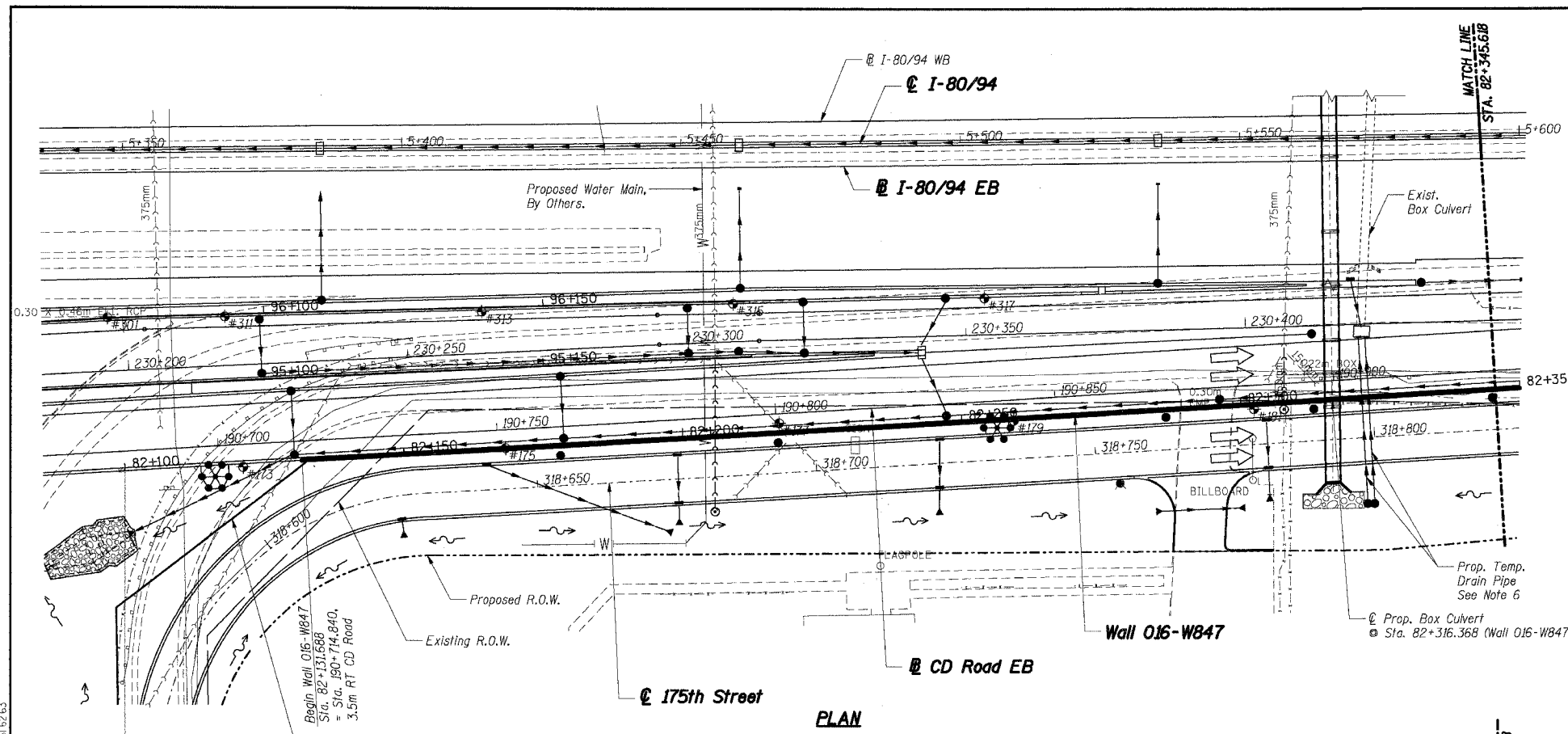


F.A.I. RTE.	SECTION	COUNTY	TOTAL SHEETS	SHEET NO.
80/94	2626.2-R-2	COOK	1207	748
STA.	TO STA.			
FED. ROAD DIST. NO.	ILLINOIS	FED. AID PROJECT		
CONTRACT NO. 62114				



**DESIGN SPECIFICATIONS:**

1989 AASHTO Standard Specifications for Highway Bridges, with 1997 thru 2000 & 2002 Interims.

1989 AASHTO Guide Specifications for Structural Design of Sound Barriers with 1992 Interims.

**DESIGN STRESSES:**

Concrete,  $f'_c = 24$  MPa  
Reinforcement,  $f_y = 400$  MPa

**DESIGN LOADING:**

Noise Abatement Wall:  
Wind Load: 1.7 kPa  
Limits: Sta. 82+131.688 to Sta. 82+162.118 & Sta. 82+414.118 to Sta. 82+513.688  
Design Height: 5.1 m measured from Top of Retaining Wall  
Limits: Sta. 82+162.118 to Sta. 82+414.118  
Design Height: 5.4 m measured from Top of Retaining Wall

**EXISTING STRUCTURE:**

None

**BENCHMARK:**

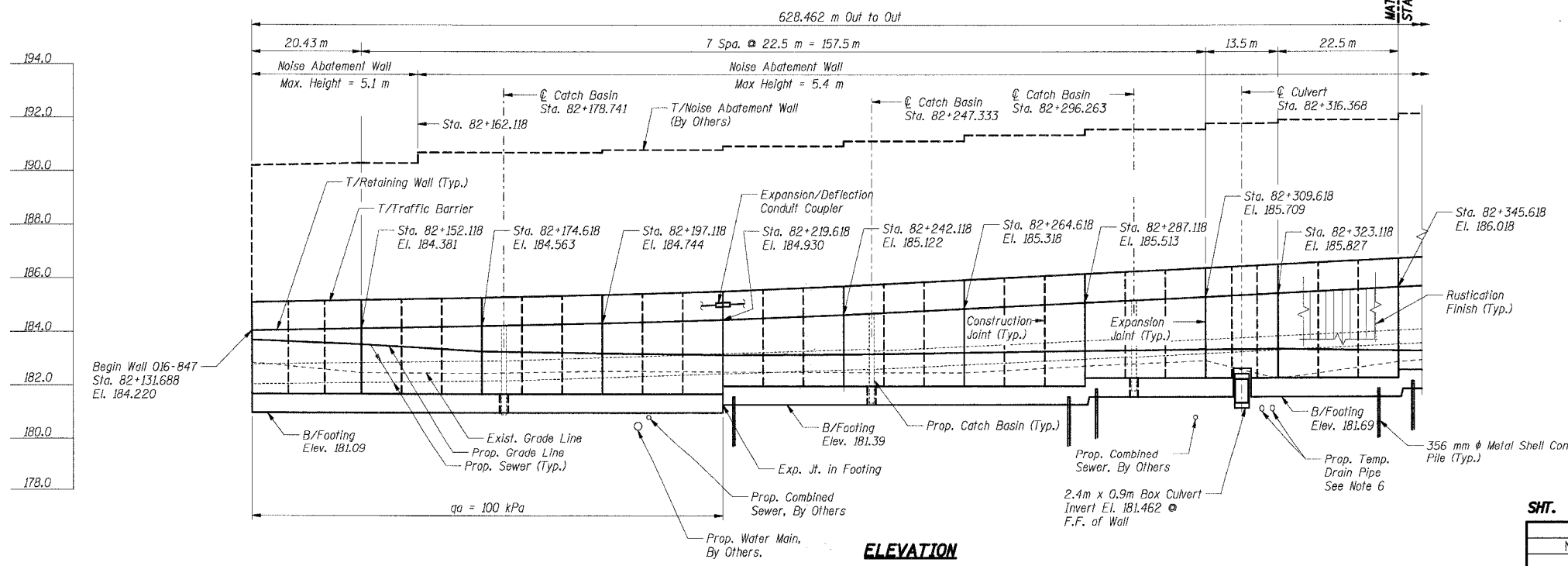
TBM "M" Chiseled square cut in southwest wingwall of existing IL Rte B3 (Torrence Avenue) bridge over I-80. El. 188.209

**LEGEND**

- High Mast Light Tower (By Others, Contract No. 62664)
- Existing Storm Sewer
- Proposed Storm Sewer
- Existing Combined Sewer, See Note 6.
- Proposed Combined Sewer, By Others. See Note 6.
- Proposed Water Main, By Others.
- #5 Soil Boring
- Proposed Manhole
- Proposed Catch Basin
- Proposed Inlet
- Rip Rap
- Proposed Retaining Wall
- Proposed Pavement
- Existing Water Main, See Notes 6 and 8.
- Gas Main, See Note 6.
- Telephone, See Note 6.
- Proposed R.O.W.
- Existing R.O.W.

**Notes:**

1. All dimensions are measured along front face of retaining wall.
2. Wall alignment offsets are referenced to front face of wall.
3. Work this sheet with RWB47-2 and RWB47-3.
4. See Sht. RWB47-4 for Index of Sheets.
5. The expansion joints and construction joints are in the traffic barrier and wall stem only, not in footing U.N.O.
6. See Drainage Plans.
7. See Sht. RWB47-2 for Location Map.
8. See Utility Relocation Plans Prepared by Robinson Engineering, Ltd. beginning at Sheet 143 A.



**THIS SHEET FOR INFORMATION ONLY**

ILLINOIS DEPARTMENT OF TRANSPORTATION  
F.A.I. ROUTE 80/94 (KINGERY EXPRESSWAY)  
LOCAL ROADS RECONSTRUCTION  
RETAINING WALL - STRUCTURE NO. 016-W847  
SECTIONS 2001-167R AND (2425 & 2626) R-1  
COOK COUNTY

**GENERAL PLAN & ELEVATION I**

SHT. RWB47-1 OF 54

REVISIONS	
NAME	DATE

**MORCOM, N.V., INC.**  
CONSULTING ENGINEERS  
CHICAGO, ILLINOIS

DATE: 3/10/2004

DRAWN BY: MS  
CHECKED BY: BK

**TENG**  
TENG & ASSOCIATES, INC.  
ENGINEERS/ARCHITECTS/PLANNERS  
CHICAGO, ILLINOIS

7-II-2005: 1333356  
 2 3 4 5 6 7 8 9 10 11 12 13 14 15 16 17 18 19 20 21 22 23 24 25 26 27 28 29 30 31 32 33 34 35 36 37 38 39 40 41 42 43 44 45 46 47 48 49 50 51 52 53 54 55 56 57 58 59 60 61 62 63  
 BAJZEKJ  
 T:\DOCUMENTS\193750\STRUCT\CON\PSR\016A.DWG