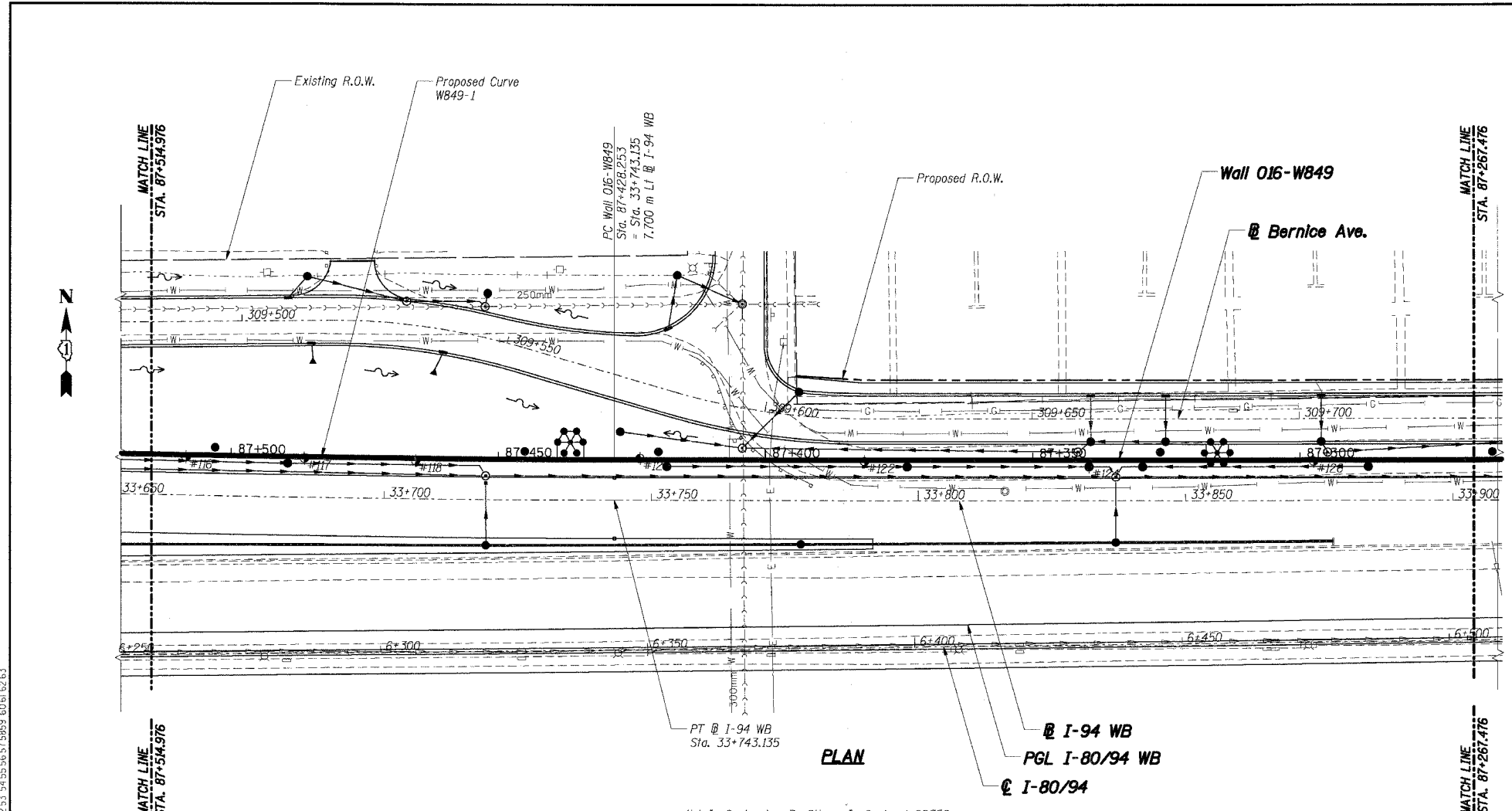
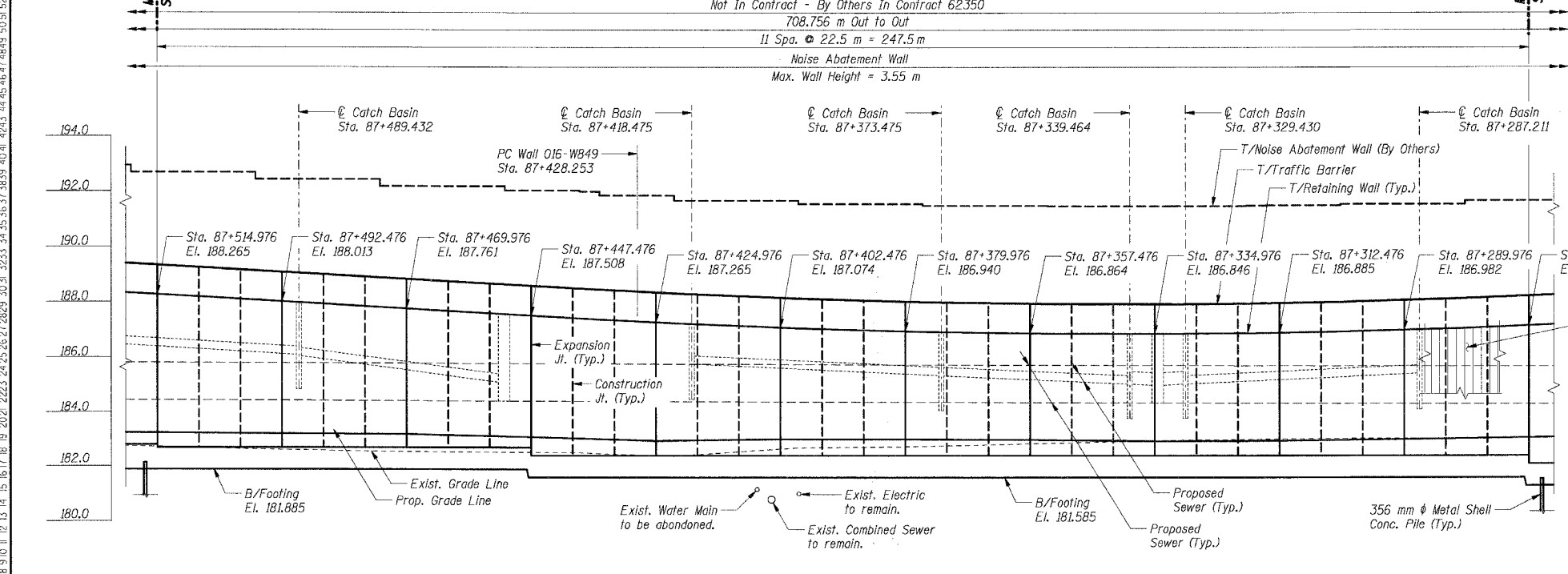


F.A.I. RTE.	SECTION	COUNTY	TOTAL SHEETS	SHEET NO.
80/94	2626.2-R-2	COOK	1207	757
STA.		TO STA.		
FED. ROAD DIST. NO.		ILLINOIS FED. AID PROJECT		
CONTRACT NO. 62114				

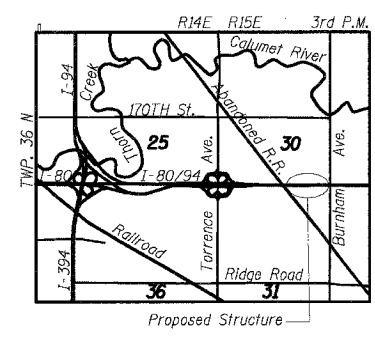


PLAN



ELEVATION - LOOKING NORTH

PROP. CURVE WB49-1	PROP. CURVE WB49-2
PI STA = 87+488.169	PI STA = 87+634.861
$\Delta = 1^\circ 22' 31''$ (RT)	$\Delta = 1^\circ 59' 08''$ (LT)
R = 4,992.282 m	R = 5,007.700 m
T = 59.917 m	T = 86.781 m
L = 119.828 m	L = 173.545 m
E = 0.360 m	E = 0.752 m
P.C. STA = 87+428.253	P.C. STA = 87+548.080
P.T. STA = 87+548.080	P.T. STA = 87+721.625



LOCATION MAP

LEGEND

- High Mast Light Tower (By Others, Contract No. 62664)
- Existing Storm Sewer
- Proposed Storm Sewer
- Existing Combined Sewer, See Note 5
- #5 Soil Boring
- Proposed Manhole
- Proposed Catch Basin
- Proposed Inlet
- Rip Rap
- Proposed Retaining Wall
- Proposed Pavement
- Existing Water Main, See Note 5
- Existing Electric, See Note 5
- Proposed R.O.W.
- Existing R.O.W.

THIS SHEET FOR INFORMATION ONLY

Notes:

1. All dimensions are measured along front face of retaining wall.
2. Wall alignment offsets are referenced to front face of wall.
3. Work this sheets with RWB49-1 and RWB49-3.
4. See Sht. RWB49-4 for Index of Sheets.
5. See Drainage Plans.

SHT. RWB49-2 OF 61

REVISIONS	
NAME	DATE

ILLINOIS DEPARTMENT OF TRANSPORTATION
 F.A.I. ROUTE 80/94 (KINGERY EXPRESSWAY)
 EB & WB OUTSIDE LANES (MAINLINE) CONSTRUCTION
 RETAINING WALL - STRUCTURE NO. 016-W849
 SECTIONS 2001-167R AND (2425 & 2626) R-1
 COOK COUNTY

GENERAL PLAN & ELEVATION II

DATE: 8/18/2004
 DRAWN BY: [blank]
 CHECKED BY: MJK

TENG
 TENG & ASSOCIATES, INC.
 ENGINEERS/ARCHITECTS/PLANNERS
 CHICAGO, ILLINOIS

T:\DOCUMENTS\1333400\1333400\STRUCTURE\NONRIBB022A.DGN
 2 3 4 5 6 7 8 9 10 11 12 13 14 15 16 17 18 19 20 21 22 23 24 25 26 27 28 29 30 31 32 33 34 35 36 37 38 39 40 41 42 43 44 45 46 47 48 49 50 51 52 53 54 55 56 57 58 59 60 61 62 63
 BAIZERKJ
 7-4-2005, 13:34:00