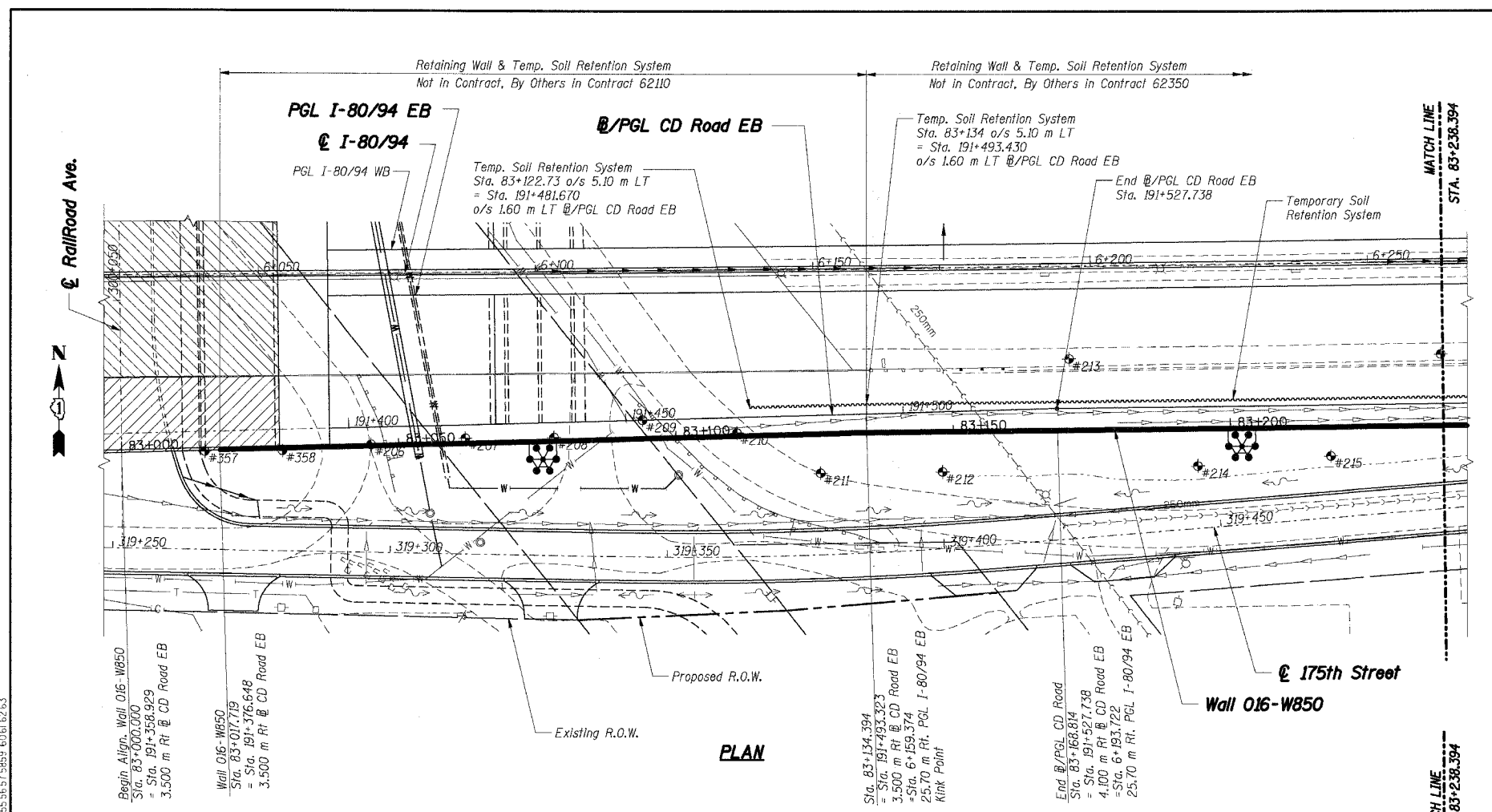
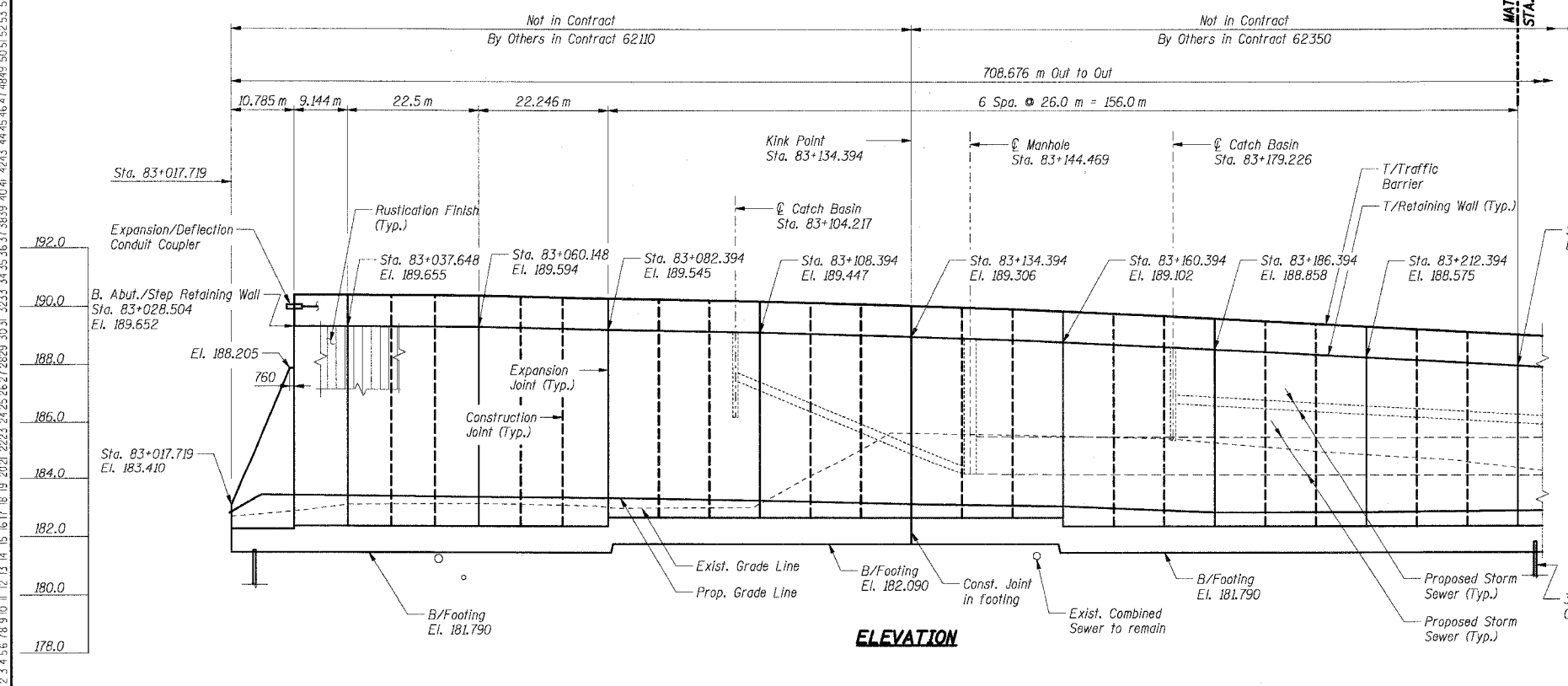


F.A.I. RTE.	SECTION	COUNTY	TOTAL SHEETS	SHEET NO.
80/94	2626.2-R-2	COOK	1207	768
STA.	TO STA.			
FED. ROAD DIST. NO.	ILLINOIS	FED. AID PROJECT		

CONTRACT NO. 62114



PLAN



ELEVATION

**DESIGN SPECIFICATIONS:**

1996 AASHTO Standard Specifications for Highway Bridges, with 1997 thru 2000 & 2002 Interims.

1989 AASHTO Guide Specifications for Structural Design of Sound Barriers with 1992 Interims.

**DESIGN STRESSES:**

Concrete,  $f'_c = 24$  MPa  
Reinforcement,  $f_y = 400$  MPa

**DESIGN LOADING:**

Noise Abatement Wall:  
Wind Load: 1.7 kPa  
Design Height: 4.15 m measured from Top of Retaining Wall  
Limits: Sta. 83+353.294 to Sta. 83+714.485

**EXISTING STRUCTURE:**

None

**BENCHMARK:**

TBM "M" Chiseled square cut in southwest wingwall of existing IL Rts 83 (Torrence Avenue) bridge over I-80. El. 188.209

**LEGEND**

- \* High Mast Light Tower, (By Others, Contract No. 62664)
- Existing Storm Sewer
- Proposed Storm Sewer
- - - Existing Combined Sewer, See Note 6
- #5 Soil Boring
- Proposed Manhole
- Proposed Manhole
- Proposed Catch Basin
- Proposed Inlet
- ⊗ Rip Rap
- ▬ Proposed Retaining Wall
- ▬ Proposed Pavement
- W- Water Main, See Note 6
- E- Electric, See Note 6
- - - Proposed R.O.W.
- - - Existing R.O.W.
- ~ Temporary Soil Retention System
- ▨ Proposed Bridge Structure S.N. 016-2792 Constructed in Contract 62110.
- ▨ Proposed Bridge Structure Constructed in this Contract.

**Notes:**

1. All dimensions are measured along front face of retaining wall.
2. Wall alignment offsets are referenced to front face of wall.
3. Work this sheets with RW850-2 and RW850-3.
4. See Sht. RW850-4 for Index of Sheets.
5. See Sht. RW850-2 for Location Map.
6. See Drainage Plans.

**THIS SHEET FOR INFORMATION ONLY**

SHT. RW850-1 OF 58

REVISIONS	
NAME	DATE

\*\*\* 2001-167R, (2425 & 2626) R-1 AND (2425 & 2626) R-2

ILLINOIS DEPARTMENT OF TRANSPORTATION  
F.A.I. ROUTE 80/94 (KINGERY EXPRESSWAY)  
EB & WB INSIDE LANES (MAINLINE) CONSTRUCTION  
RETAINING WALL - STRUCTURE NO. 016-W850  
SECTIONS \*\*\*  
COOK COUNTY

**GENERAL PLAN & ELEVATION I**

DATE: 7/18/2005  
DRAWN BY: CHECKED BY: MJK

**TENG**  
TENG & ASSOCIATES, INC.  
ENGINEERS/ARCHITECTS/PLANNERS  
CHICAGO, ILLINOIS

T:\DOCUMENTS\193750\STRUCT\DRAWING\016\016A.DGN  
 7-11-2005 13:34:33  
 12 3 4 5 6 7 8 9 10 11 12 13 14 15 16 17 18 19 20 21 22 23 24 25 26 27 28 29 30 31 32 33 34 35 36 37 38 39 40 41 42 43 44 45 46 47 48 49 50 51 52 53 54 55 56 57 58 59 60 61 62 63