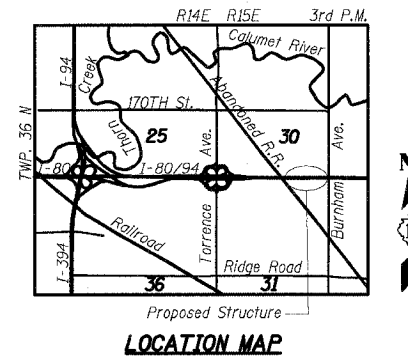
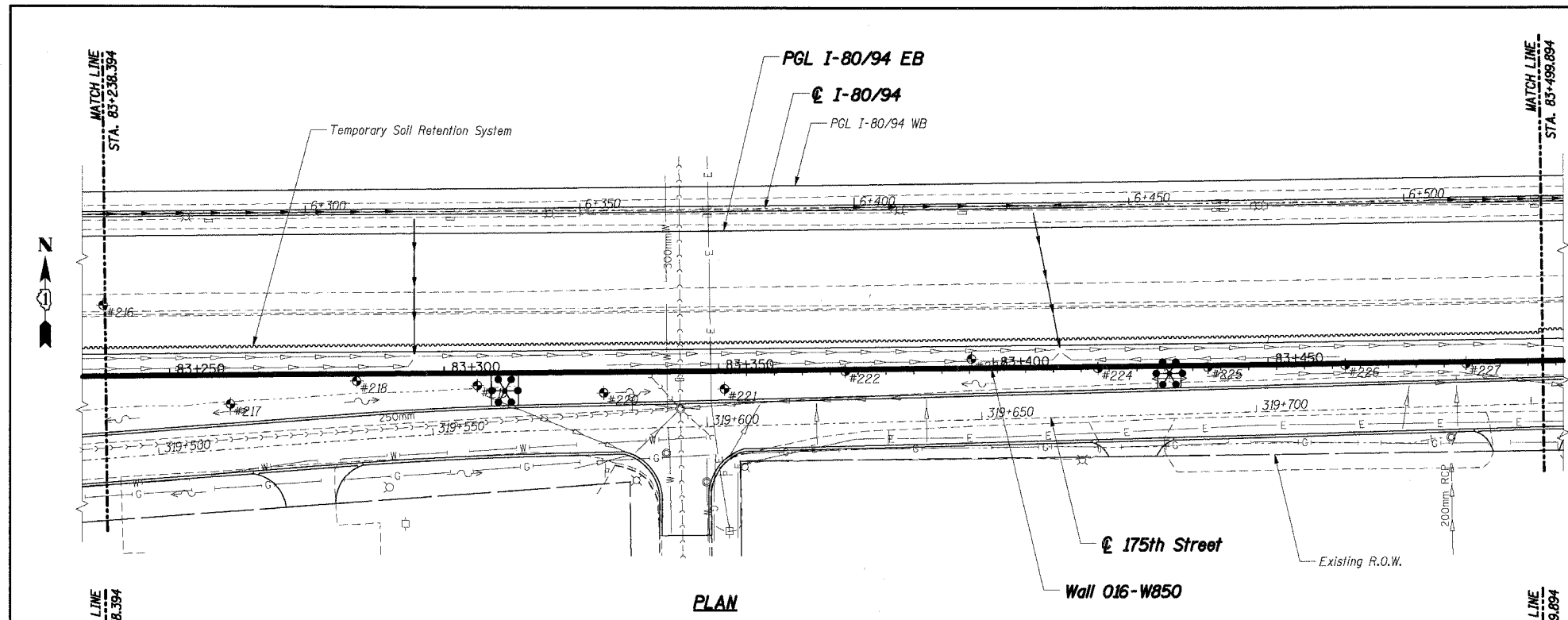


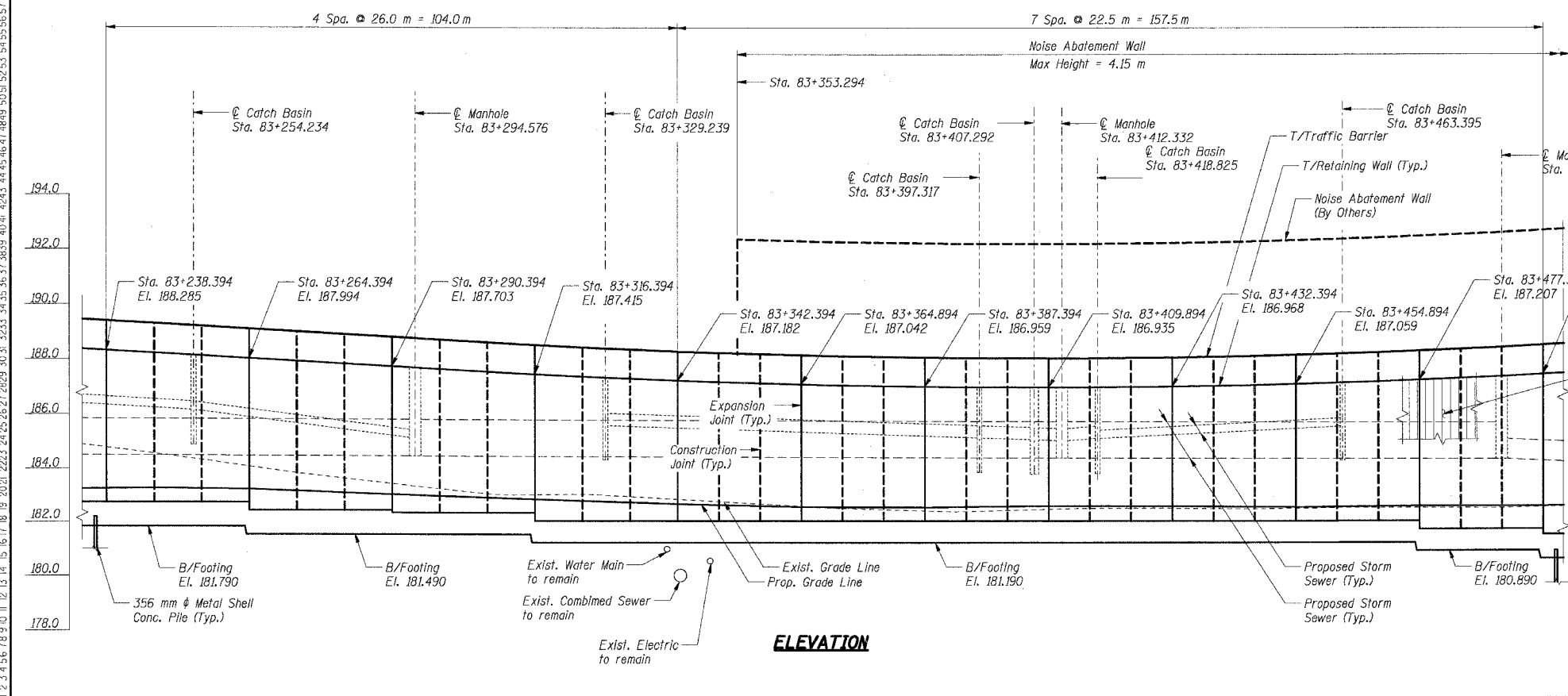
| | | | | |
|---------------------|------------|------------------|--------------|-----------|
| F.A.I. RTE. | SECTION | COUNTY | TOTAL SHEETS | SHEET NO. |
| 80/94 | 2626.2-R-2 | COOK | 1207 | 769 |
| STA. | TO STA. | | | |
| FED. ROAD DIST. NO. | ILLINOIS | FED. AID PROJECT | | |

CONTRACT NO. 62114



*****ref_list_name*****
 7-11-2005 13:34:38
 T:\DOCUMENTS\931750\STRUCT\WORK\RSB022A.DGN
 2 3 4 5 6 7 8 9 10 11 12 13 14 15 16 17 18 19 20 21 22 23 24 25 26 27 28 29 30 31 32 33 34 35 36 37 38 39 40 41 42 43 44 45 46 47 48 49 50 51 52 53 54 55 56 57 58 59 60 61 62 63

Not in Contract - By Others in Contract 62350
708.676 m Out to Out



LEGEND

- ✱ High Mast Light Tower (By Others, Contract No. 62664)
- Existing Storm Sewer
- Proposed Storm Sewer
- Existing Combined Sewer, See Note 5
- #5 Soil Boring
- Proposed Manhole
- ◻ Proposed Manhole
- Proposed Catch Basin
- Proposed Inlet
- ▨ Rip Rap
- ▬ Proposed Retaining Wall
- Proposed Pavement
- W— Water Main, See Note 5
- E— Electric, See Note 5
- Proposed R.O.W.
- Existing R.O.W.
- ~~~~~ Temporary Soil Retention System

Notes:

1. All dimensions are measured along front face of retaining wall.
2. Wall alignment offsets are referenced to front face of wall.
3. Work this sheet with RW850-1 and RW850-3.
4. See Sht. RW850-4 for Index of Sheets.
5. See Drainage Plans.

THIS SHEET FOR INFORMATION ONLY

SHT. RW850-2 OF 58

| REVISIONS | |
|-----------|------|
| NAME | DATE |
| | |
| | |
| | |
| | |

*** 2001-167R, (2425 & 2626) R-1 AND (2425 & 2626) R-2
 ILLINOIS DEPARTMENT OF TRANSPORTATION
 F.A.I. ROUTE 80/94 (KINGERY EXPRESSWAY)
 EB & WB INSIDE LANES (MAINLINE) CONSTRUCTION
 RETAINING WALL - STRUCTURE NO. 016-W850
 SECTIONS ***
 COOK COUNTY

GENERAL PLAN & ELEVATION II

DATE: 7/18/2005
 DRAWN BY: CHECKED BY: MJK
TENG
 ENGINEERS/ARCHITECTS/PLANNERS
 CHICAGO, ILLINOIS